



Photo 1 – NTSB Digital Photograph. Left Forward Quartering View of the Wreckage.



Photo 2 - NTSB Digital Photograph. Forward View of the Wreckage.



Photo 3 - NTSB Digital Photograph. Right Side View of the Wreckage.



Photo 4 - NTSB Digital Photograph. View of the Throttle Control Extended 1.75 inches



Photo 5 - NTSB Digital Photograph. View of the Left Wing



Photo 6 - NTSB Digital Photograph. Right Forward Quartering View of the Main Wreckage



Photo 7 - NTSB Digital Photograph. Left Side View of the Left Wing



Photo 8 - NTSB Digital Photograph. Left Side View of the Empennage



Photo 9 – NTSB Digital Photograph. Right Side View of the Empennage

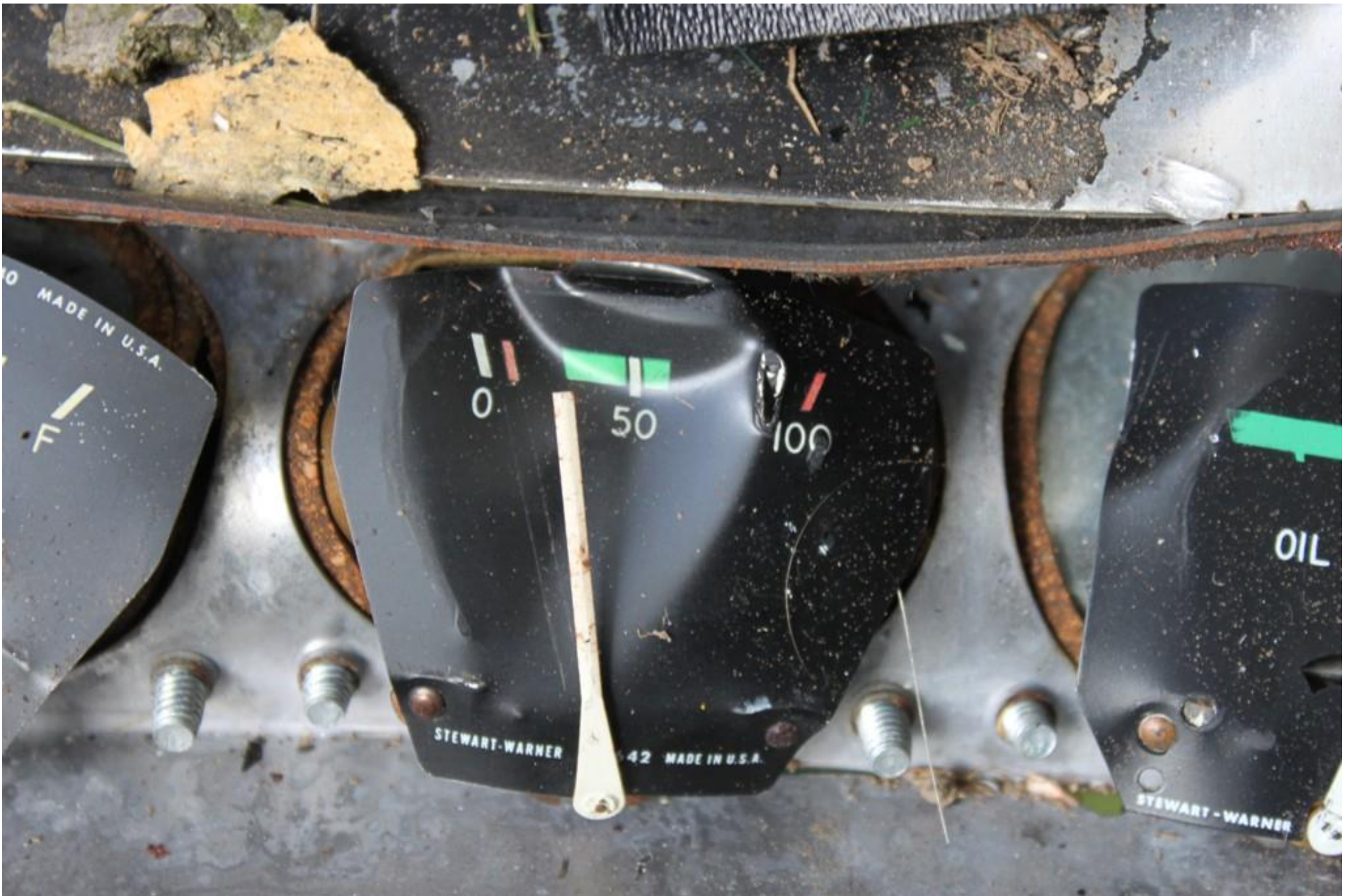


Photo 10 - NTSB Digital Photograph. View of the Oil Pressure Gauge

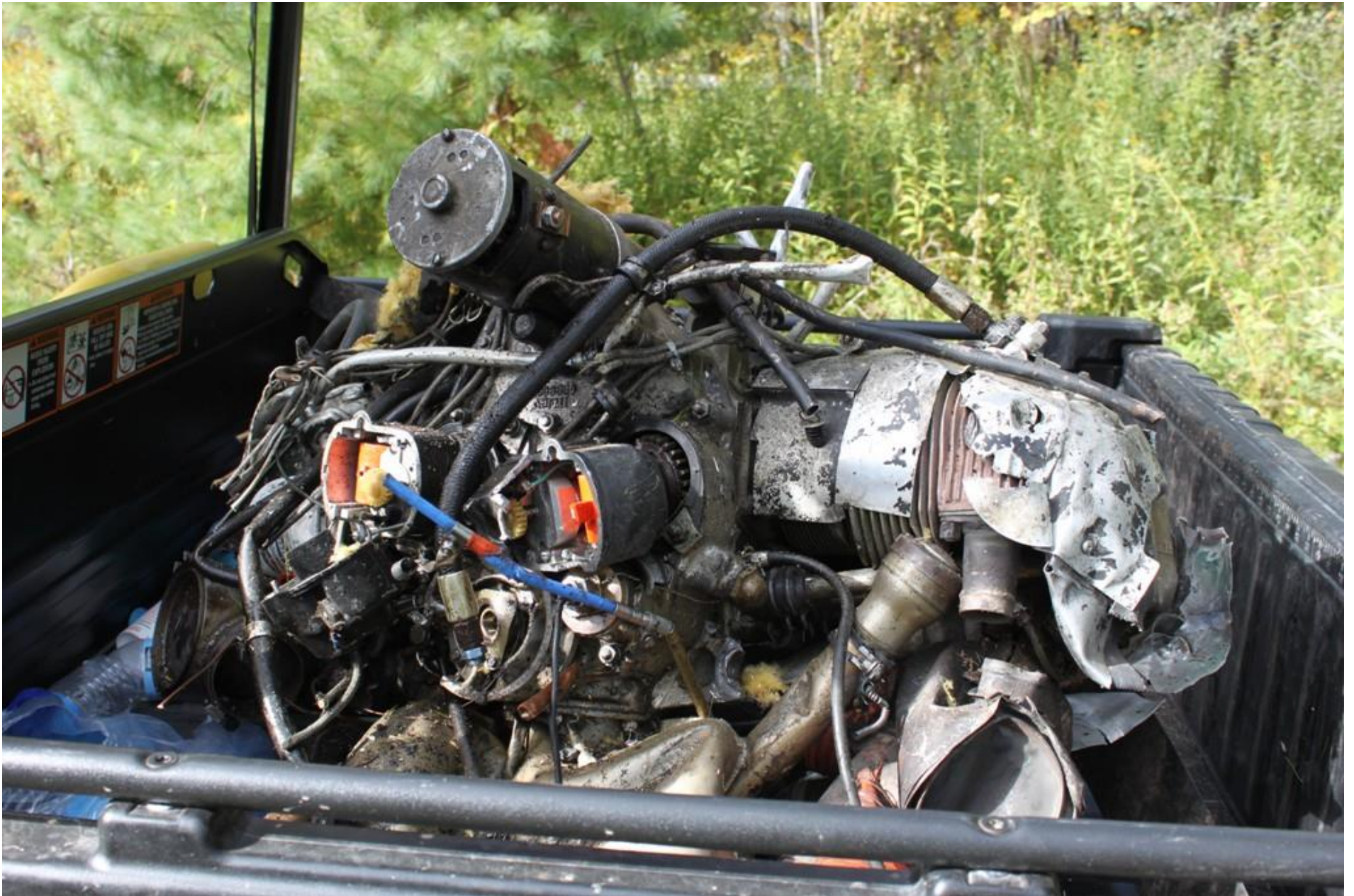


Photo 11 - NTSB Digital Photograph. View of the Aft Side of the Engine Assembly



Photo 12 - NTSB Digital Photograph. Forward View of the Left Wing. Note the Full Span Leading Edge Crushing



Photo 13 - NTSB Digital Photograph. View of the Stall Warning Horn Housing



Photo 14 - NTSB Digital Photograph. Forward View of the Engine Assembly with Attached Propeller



Photo 15 - NTSB Digital Photograph. View of the Oil Pickup Screen



Photo 16 - NTSB Digital Photograph. View of the No. 3 Cylinder and Piston



Photo 17 - NTSB Digital Photograph. View of the Upper and Lower Spark Plugs



Photo 18 - NTSB Digital Photograph. View of the Oil Filter Element



Photo 19 - NTSB Digital Photograph. View of the Aft Portion of the Ignition Switch. Note the Impact Damage to the Rear Cover



Photo 20 - NTSB Digital Photograph. View of the Oil Pump Gears