



Photo 1 – NTSB Photograph. Right Forward Quartering View of the Airplane Following Recovery.



Photo 2 - NTSB Photograph. View Looking aft Depicting the Separated Nose Landing Gear



Photo 3 - NTSB Photograph. View Depicting the Inflated No. 2 Tire



Photo 4 - NTSB Photograph. View Depicting the No. 3 Wheel.



Photo 5 - NTSB Photograph. View Depicting the No. 4 Wheel



Photo 6 - NTSB Photograph. View Depicting the No. 4 Tire



Photo 7 – NTSB Photograph. View Depicting the Nos. 3 and 4 Tires



Photo 8 - Bombardier Photograph. View Depicting the Nose Landing Gear and 1 WOW Sensor



Photo 9 - NTSB Photograph. View Depicting the Center Pedestal



Photo 10 - NTSB Photograph. View Depicting Brake Testing

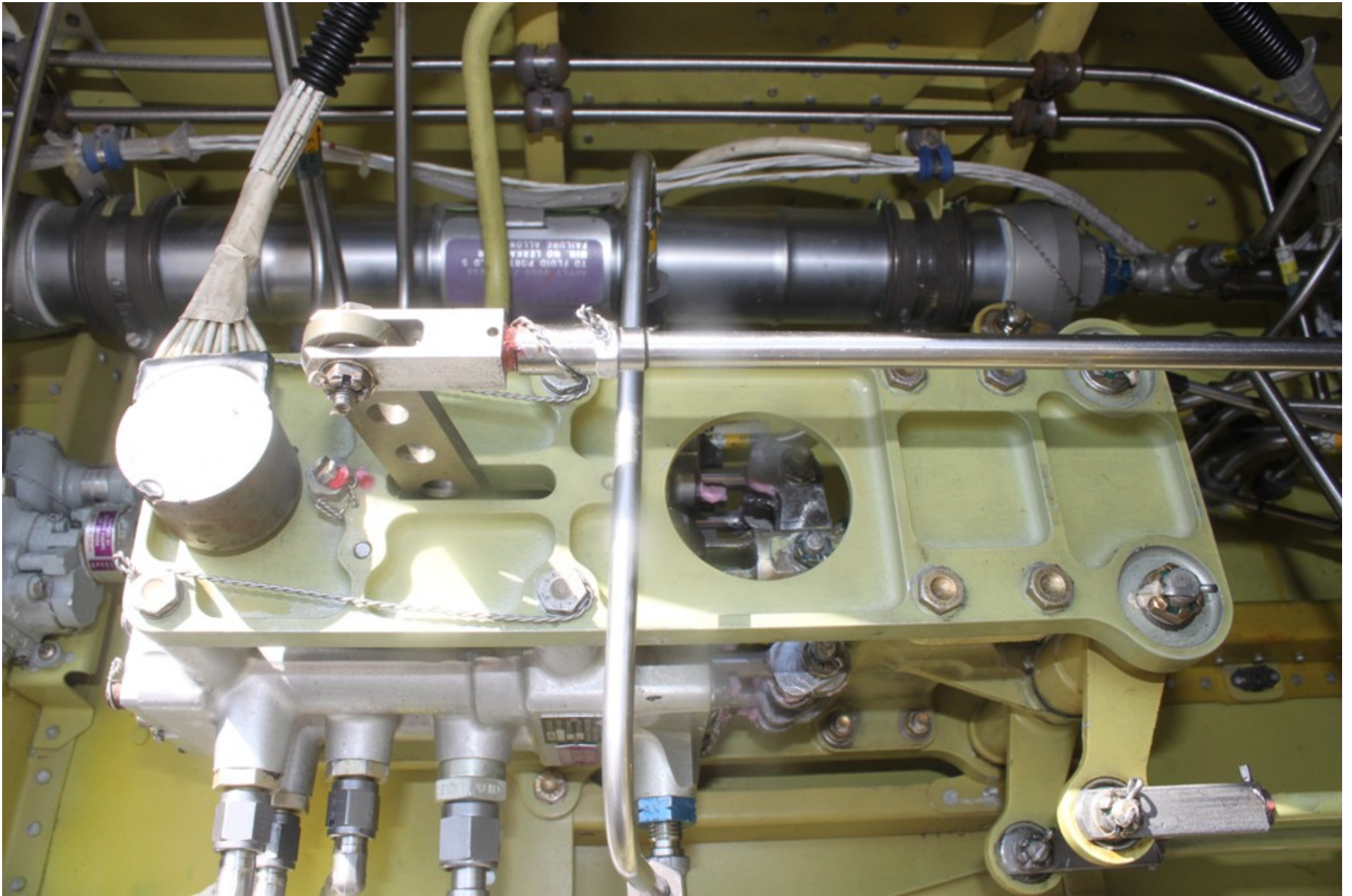


Photo 11 - NTSB Photograph. View Depicting the Upper and Lower Brake Control Valves