

LOC/DME I-LHJ <b>111.9</b> Chan <b>56</b>	APP CRS <b>198°</b>	Rwy Idg <b>8000</b> TDZE <b>871</b> Apt Elev <b>872</b>
---	------------------------	---

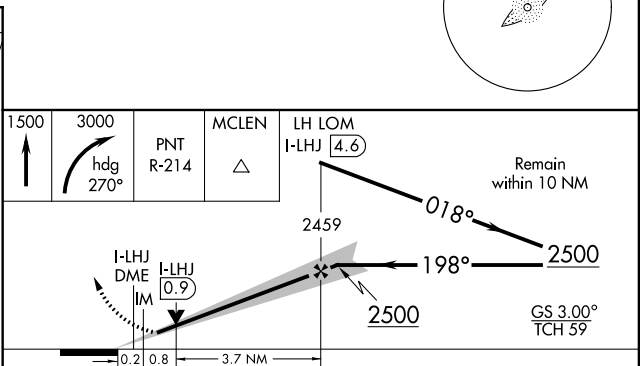
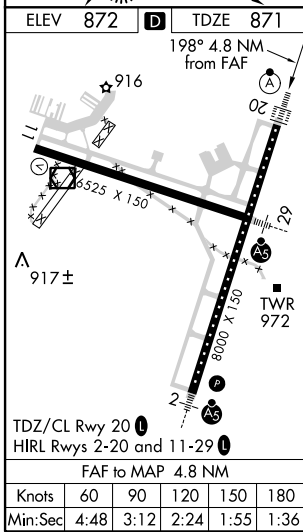
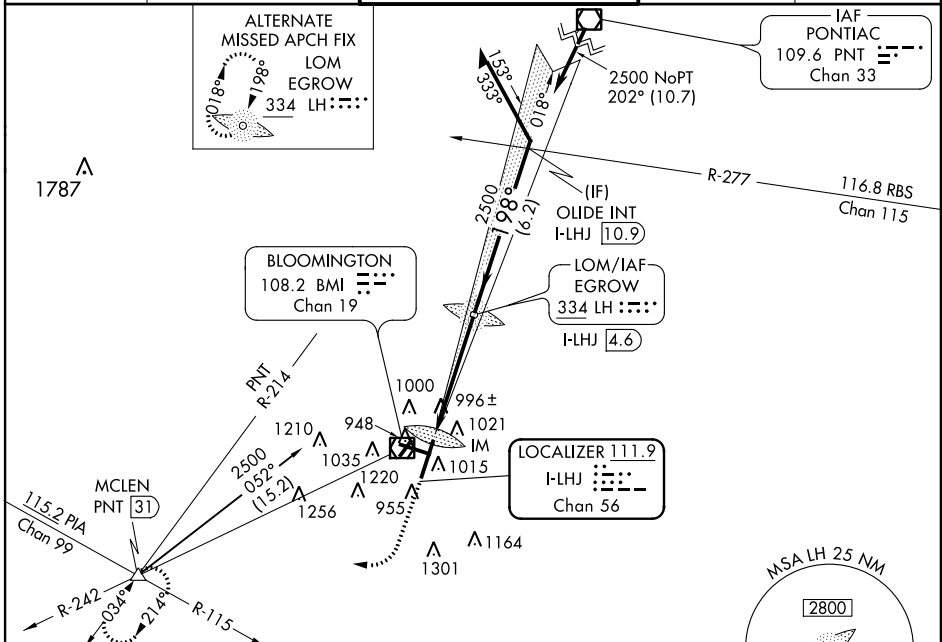
# ILS or LOC RWY 20

CENTRAL IL RGNL ARPT AT BLOOMINGTON-NORMAL (BMI)

▼ If local altimeter setting not received, use General Down-  
Peoria Intl altimeter setting and increase all DAs/MDAs 120 feet.  
▲ VDP NA when using General Down-  
Peoria Intl altimeter setting.

ALSF-2 MISSED APPROACH: Climb to 1500, then  
climbing right turn to 3000 via heading  
270° and PNT VOR/DME R-214 to  
MCLN Int/PNT 31 DME and hold.

ATIS <b>135.35</b>	PEORIA APP CON <b>128.725 256.9</b>	BLOOMINGTON TOWER * <b>124.6 (CTAF) 0 269.575</b>	GND CON <b>121.65</b>	UNICOM <b>122.95</b>
-----------------------	--	--	--------------------------	-------------------------



CATEGORY	A	B	C	D
S-ILS 20	1071/18 200 (200-½)			
S-LOC 20	1260/24	389 (400-½)	1260/40	389 (400-¾)
CIRCLING	1340-1	468 (500-1)	1340-1½	1520-2 648 (700-2)

EC-3, 02 APR 2015 to 30 APR 2015

EC-3, 02 APR 2015 to 30 APR 2015