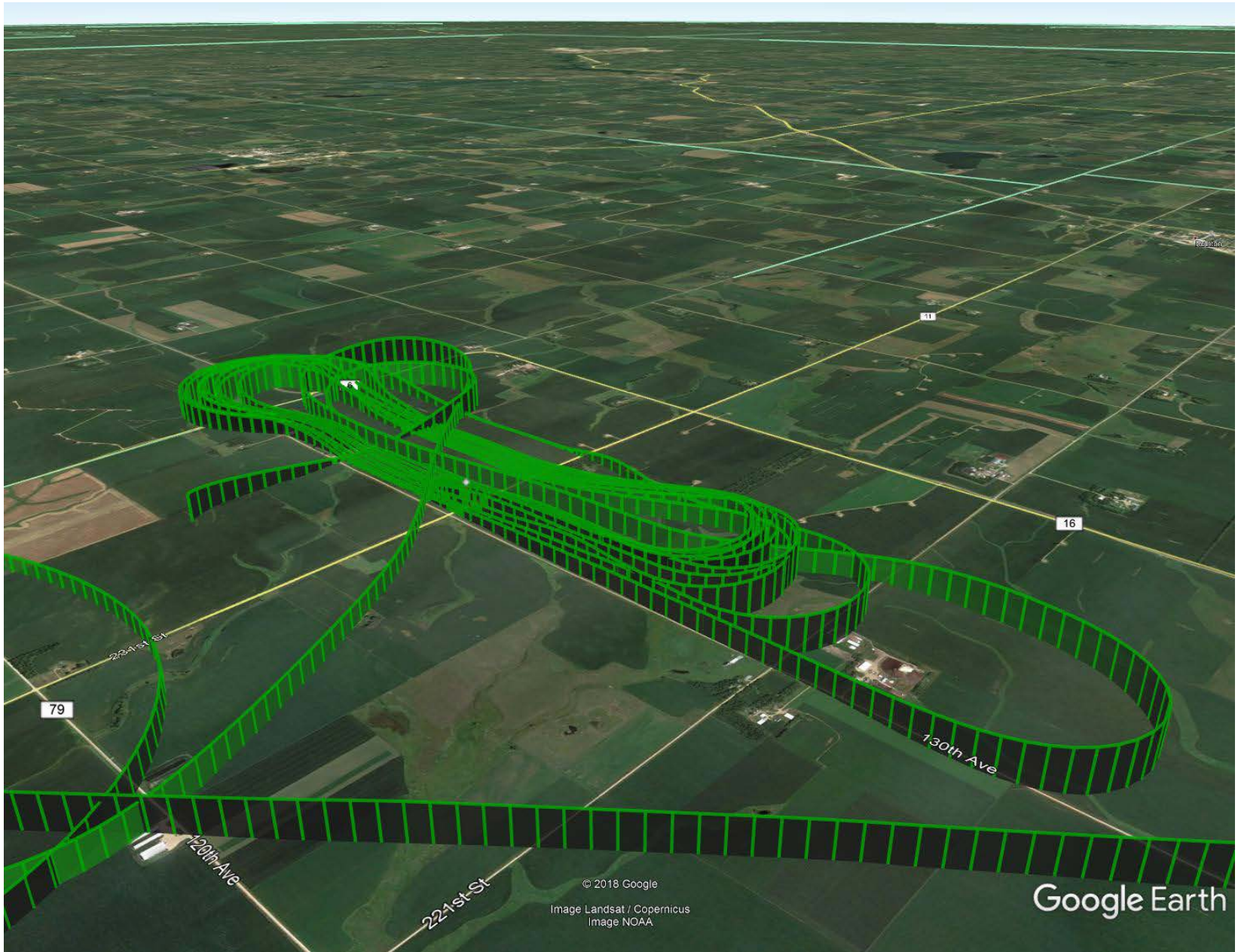


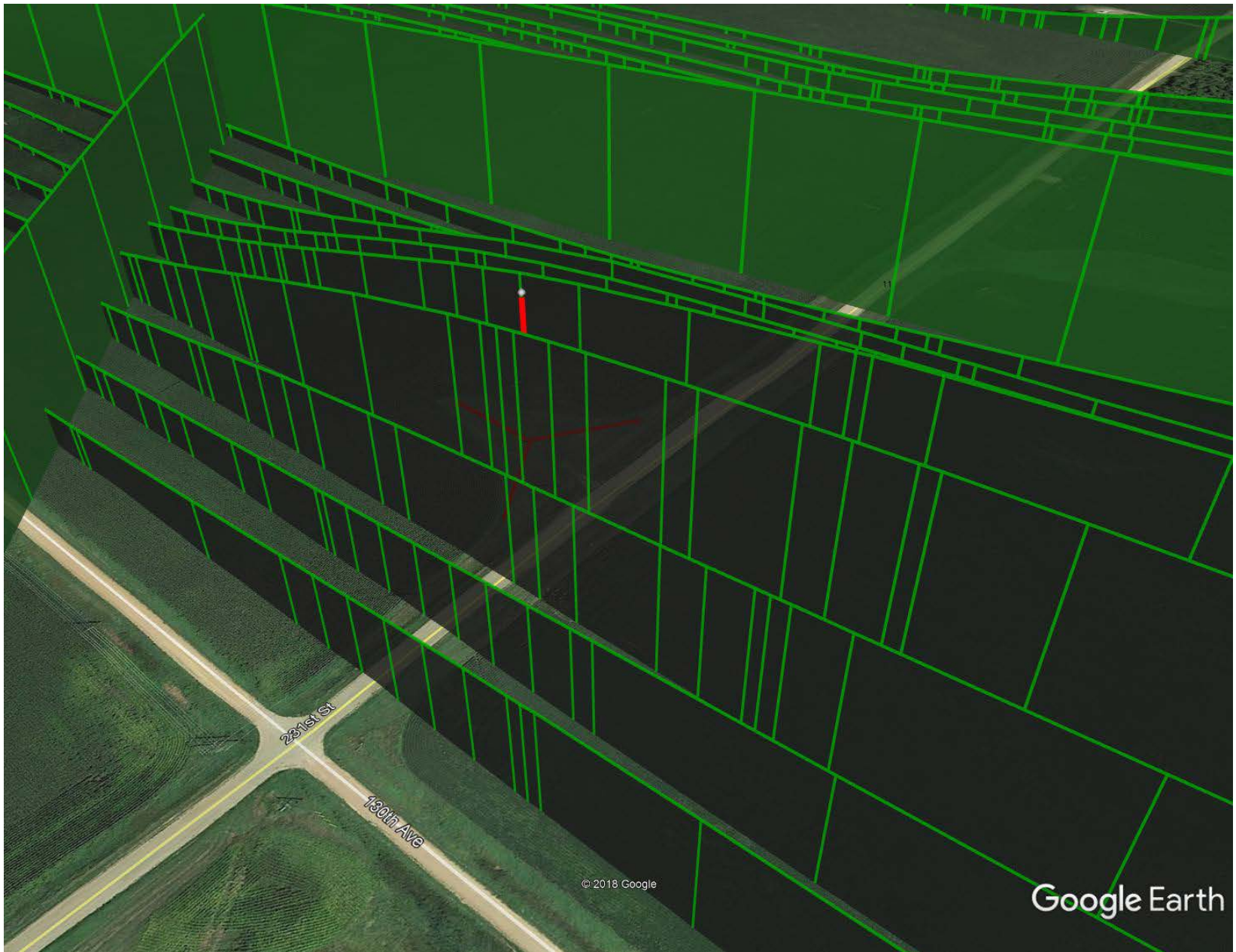
**Image 1 – Satellite view of accident field**



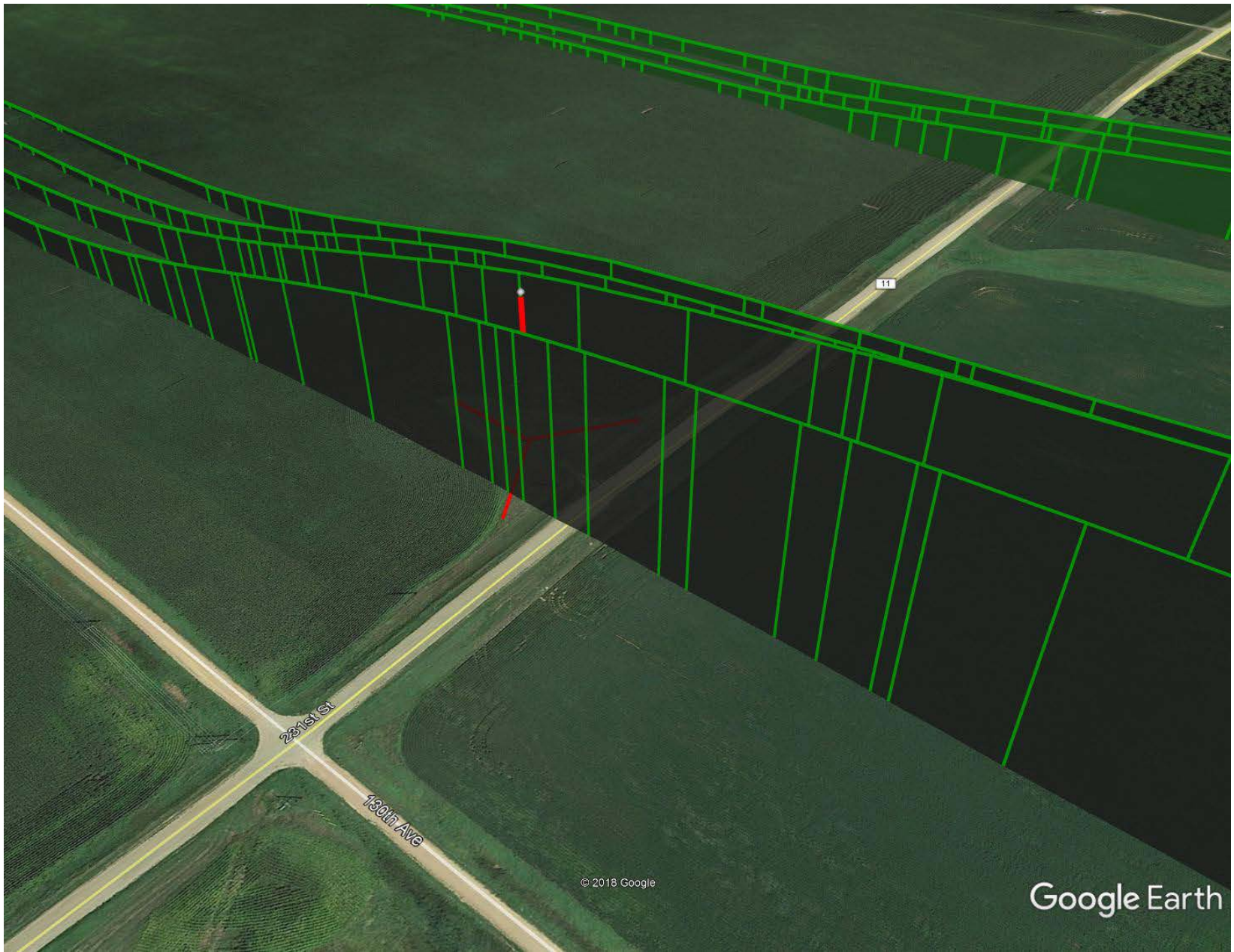
Image 2 – Sectional chart excerpt showing the location of the accident site



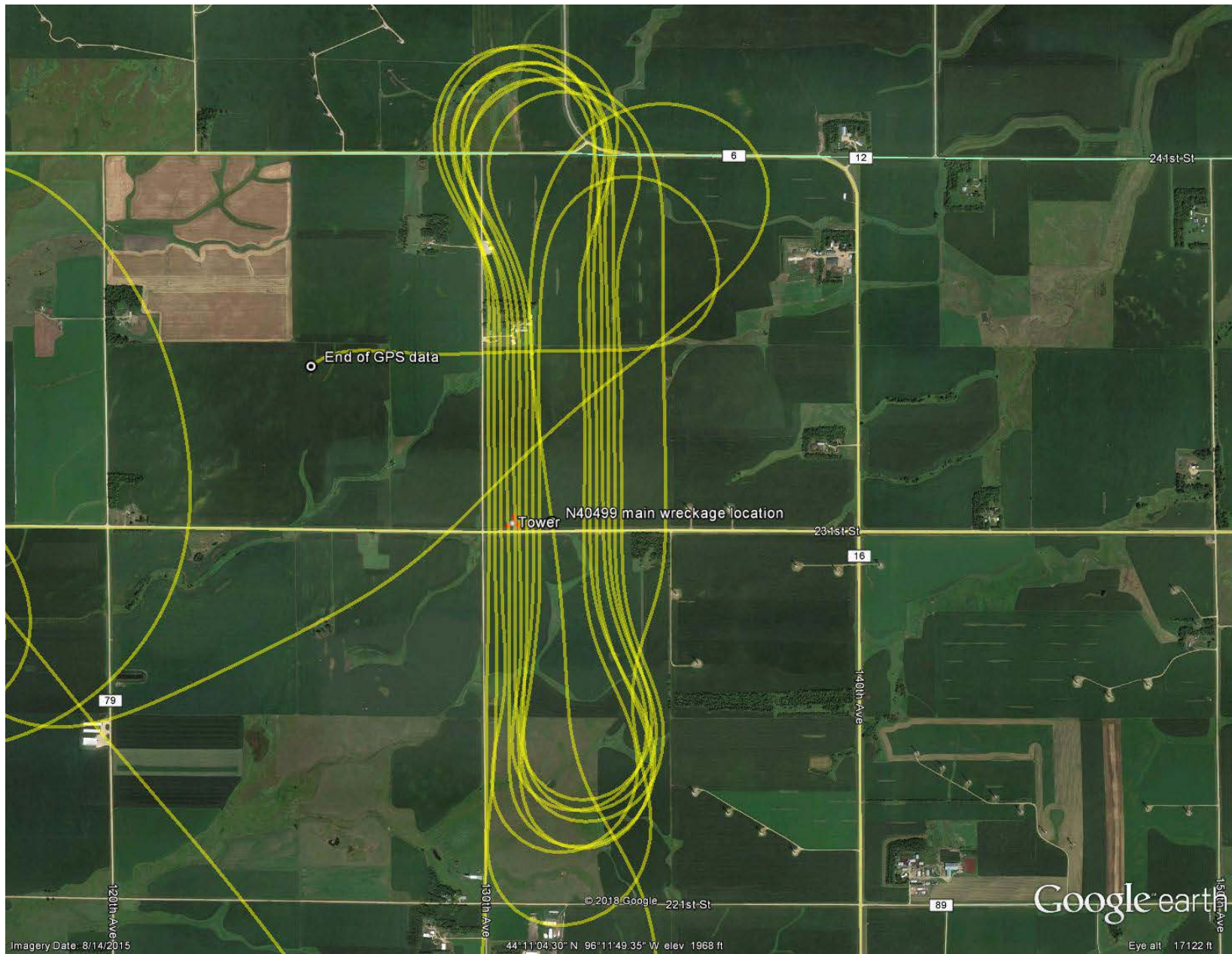
**Image 3 – 3 dimensional view of the airplane flight path**



**Image 4 – 3 dimensional close up of passes near the tower location**



**Image 5 – 3 dimensional close up of the passes directly over the tower and guy wires**



**Image 6 – Satellite view of the spray passes in the accident field.**



**Photo 1 – View of tower damage**



**Photo 2 – View of main wreckage and tower section looking west**





**Photo 3 – View of main wreckage from left side**



**Photo 4 – View of right wing**



**Photo 5 – View of main wreckage from bottom side**