

Figure 179. Shaft Installation, Tail Rotor Drive

(1)		(2)	(3)	(4)	(5)	(6)	(7)	(8)
ILLUSTRATION		SMR CODE	NATIONAL STOCK NUMBER	FSCM	PART NUMBER	DESCRIPTION	UM	QTY INC IN UNIT
(A) FIG. NO.	(B) ITEM NO.							
179		XCFZZ		97499	205-040-003-3	SHAFT INSTL, TAIL ROTOR SEE FIG.5 FOR NHA UHH,UHV	EA	1
179	1	PAOOO	3010-00-957-6866	97499	204-040-811-1	CLAMP, COUPLING UHH,UHV	EA	4
179	1A	PAOZZ	5310-00-688-2069	72962	52Z1835-048	. . . NUT, SELF-LOCKING, EX-ALTERNATE FOR PN MS21042L4 UHH,UHV	EA	4
179	1A	PAOZZ	5310-00-702-5020	80539	FN1216-428	. . . NUT ALTERNATE FOR PN 52Z1835-048 ALTERNATE FOR PN MS21042 LH UHH,UHV	EA	4
179	1B	PAOZZ	5306-00-894-1067	96906	MS9089-24	. . . BOLT, MACHINE UHH,UHV	EA	4
179	2	PAODD	1615-01-008-2798	97499	204-040-620-7	. . . SHAFT ASSEMBLY, TAIL ROTOR UHH,UHV	EA	1
179	3	PAODD	1615-01-008-2797	97499	204-040-620-9	. . . SHAFT ASSEMBLY, TAIL ROTOR UHH,UHV	EA	1
179	4	PAOZZ	9905-00-060-2034	97499	100-024-1	. . . PLATE, IDENTIFICATION UHH,UHV	EA	1
179	4A	PADZZ	1615-01-058-3668	97499	204-040-621-3	. . . WEIGHT, DRIVE SHAFT UHH,UHV	EA	1
179	4B	PADZZ	1615-01-058-3669	97499	204-040-621-5	. . . WEIGHT, DRIVE SHAFT UHH,UHV	EA	16
179	4C	PADZZ	1615-01-058-3670	97499	204-040-621-7	. . . WEIGHT, DRIVE SHAFT UHH,UHV	EA	2
179	5	AOOOO		97499	204-040-600-11	. . . HANGER ASSEMBLY, DRIVE, SEE FIG.180 FOR BREAKDOWN UHH,UHV	EA	1
179	6	PAOZZ	5306-00-151-1421	88044	AN4-13A	. . . BOLT, MACHINE UHH,UHV	EA	2
179	7	PAOZZ	5310-00-141-1795	88044	AN960-416	. . . WASHER, FLAT UHH,UHV	EA	V
179	8	PAOZZ	5310-00-844-5081	80205	NAS1197-416	. . . WASHER, FLAT UHH,UHV	EA	6
179	9	PAOZZ	5310-00-807-1475	96906	MS21042L4	. . . NUT, SELF-LOCKING, EX WASHER, HEXAGON UHH,UHV	EA	2
179		XCFZZ		97499	205-040-003-1	SHAFT INSTL, SEE FIG.8 FOR NHA UHH,UHV	EA	1
179	11	PAODD	1615-01-008-2798	97499	204-040-620-7	. . . SHAFT ASSEMBLY, TAIL UHH,UHV	EA	4
179	12	PAOZZ	9905-00-060-2034	97499	100-024-1	. . . PLATE, IDENTIFICATION UHH,UHV	EA	2
179	12A	PADZZ	1615-01-058-3668	97499	204-040-621-3	. . . WEIGHT, DRIVE SHAFT UHH,UHV	EA	1
179	12B	PADZZ	1615-01-058-3669	97499	204-040-621-5	. . . WEIGHT, DRIVE SHAFT UHH,UHV	EA	16
179	12C	PADZZ	1615-01-058-3670	97499	204-040-621-7	. . . WEIGHT, DRIVE SHAFT UHH,UHV	EA	2
179	13	AOOOO		97499	204-040-600-11	. . . HANGER ASSEMBLY SEE FIG.180 FOR BKDN UHH,UHV	EA	3
179	14	PAOZZ	5306-00-515-8064	88044	AN4-7A	. . . BOLT, MACHINE UHH,UHV	EA	2
179	15	PAOZZ	5310-00-167-0835	88044	AN960-416L	. . . WASHER, FLAT UHH,UHV	EA	V
179	16	PAOZZ	5310-00-844-5081	80205	NAS1197-416	. . . WASHER, FLAT UHH,UHV	EA	V
179	17	PAOZZ	5310-00-807-1475	96906	MS21042L4	. . . NUT, SELF-LOCKING, EX WASHER, HEXAGON ALTERNATE FOR PN 52Z1835-048 & PN FN1216-428 UHH,UHV	EA	4
179	17A	PAOZZ	5306-00-151-1424	88044	AN4-10A	. . . BOLT, MACHINE UHH,UHV	EA	4
179	18	PAOZZ	5306-00-182-1960	88044	AN4H-12A	. . . BOLT, MACHINE UHH,UHV	EA	4
179	19	PAOZZ	5310-00-167-0835	88044	AN960-416L	. . . WASHER, FLAT UHH,UHV	EA	4
179	20	PAOZZ	5310-00-804-8801	80205	NAS1197-416L	. . . WASHER, FLAT UHH,UHV	EA	4
179	21	PAODD	3110-00-918-2676	97499	204-040-003-37	. . . GEARBOX ASSEMBLY SEE FIG.181 FOR BREAKDOWN UHH,UHV	EA	1
179	22	PAOZZ	5310-00-807-1476	96906	MS21042L5	. . . NUT, SELF-LOCKING, EX WASHER, HEXAGON UHH,UHV	EA	6
179	23	PAOZZ	5310-00-184-8980	88044	AN960PD516L	. . . WASHER, FLAT UHH,UHV	EA	6
179	24	PAOZZ	5310-00-167-0836	88044	AN960-516L	. . . WASHER, FLAT UHH,UHV	EA	6
179	25	PAODD	3040-00-918-2677	97499	204-040-012-13	. . . GEAR BOX ASSEMBLY, T, 90 DEGREE RPLS-1615-00472-7305 & 1615-00-9614426 SEE FIG.184 FOR BREAKDOWN UHH,UHV	EA	1

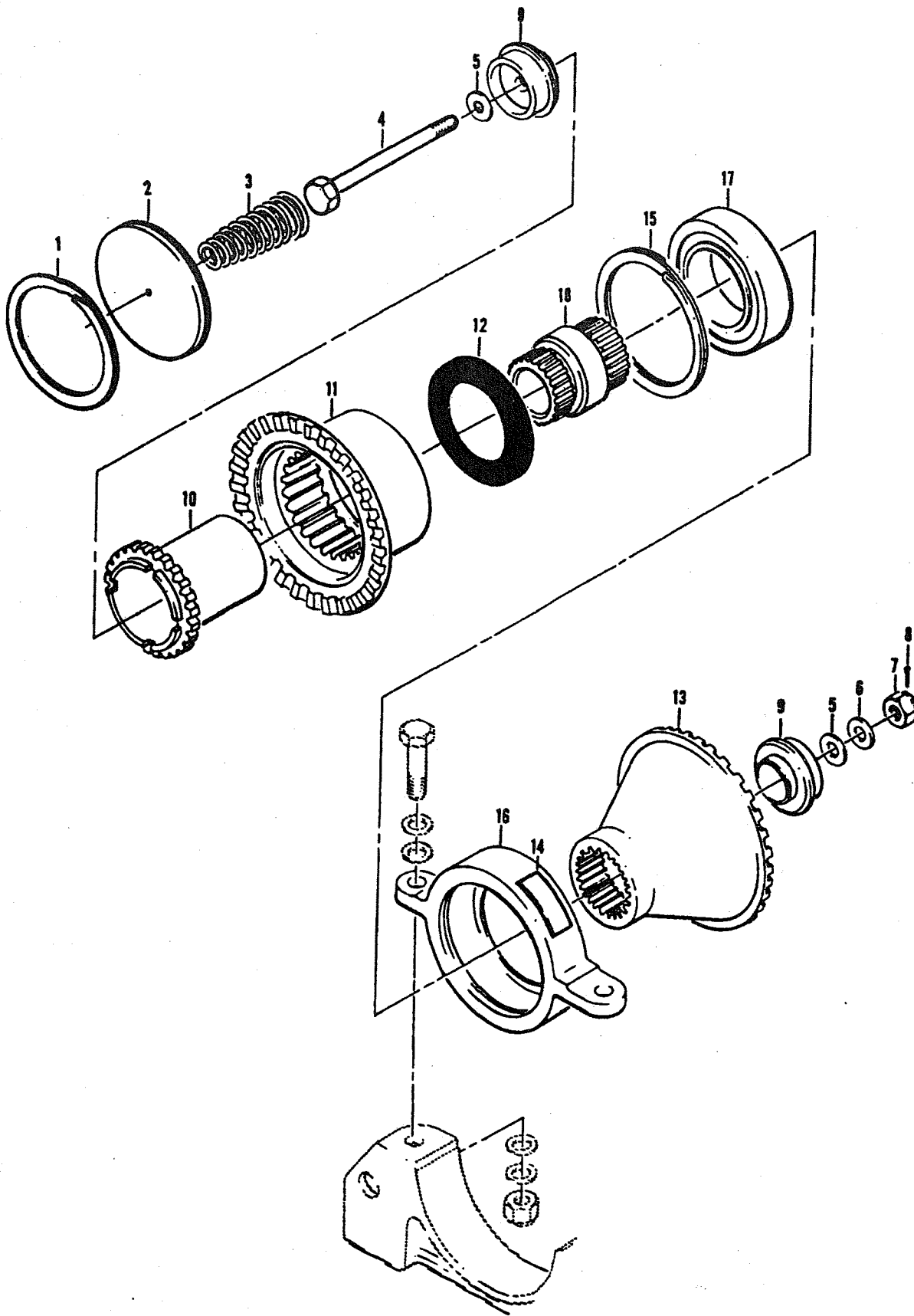


Figure 180. Hanger Assembly, Driveshaft

(1)		(2)	(3)	(4)	(5)	(6)	(7)	(8)
ILLUSTRATION		SMR CODE	NATIONAL STOCK NUMBER	FSCM	PART NUMBER	DESCRIPTION	USABLE ON CODE	QTY INC IN UNIT
(A) FIG. NO.	(B) ITEM NO.							
180		AOOOO	1615-01-056-5365	97499	204-040-600-11	HANGER ASSEMBLY,DRIVE SHAFT UHH,UHM,UHV	EA	1
180	1	PAOZZ	5365-00-619-0523	80756	RRT237C	. RING,RETAINING UHH,UHM,UHV	EA	1
180	2	PAOZZ	1615-00-701-4144	97499	204-040-610-1	. PLATE ASSEMBLY,TAIL UHH,UHM,UHV	EA	1
180	3	PAOZZ	5360-00-701-5659	97499	204-040-608-1	. SPRING,HELICAL,COMP UHH,UHM,UHV	EA	1
180	4	PBOZZ	5306-00-180-2711	88044	AN4-30	. BOLT,MACHINE UHH,UHM,UHV	EA	1
180	5	PAOZZ	5310-00-844-5081	80205	NAS1197-416	. WASHER,FLAT UHH,UHM,UHV	EA	2
180	6	PAOZZ	5310-00-167-0835	88044	AN960-416L	. WASHER,FLAT UHH,UHM,UHV	EA	1
180	7	PAOZZ	5310-00-167-1285	88044	AN310-4	. NUT,PLAIN,CASTELLAT UHH,UHM,UHV	EA	1
180	8	PAOZZ	5315-00-234-1856	96906	MS24665-155	. PIN,COTTER UHH,UHM,UHV	EA	1
180	9	PAOZZ	1615-00-448-9189	97499	204-040-616-5	. PLATE,RETAINING,TAIL UHH,UHM,UHV	EA	2
180	10	PAOZZ	1615-00-791-6073	97499	204-040-603-7	. COUPLING,MALE SPHER UHH,UHM,UHV	EA	1
180	11	PAOZZ	1615-00-701-4142	97499	204-040-604-5	. COUPLING,DRIVE SHAFT UHH,UHM,UHV	EA	1
180	12	PAOZZ	5330-00-625-0132	97499	204-040-611-1	. SEAL,PLAIN UHH,UHM,UHV	EA	1
180	13	PAOZZ	1615-00-765-2417	97499	204-040-614-3	. COUPLING,HANGER UHH,UHM,UHV	EA	1
180	14	PAOZZ	9905-00-060-2034	97499	100-024-1	. PLATE,IDENTIFICATION UHH,UHM,UHV	EA	1
180	15	PAOZZ	5365-00-768-2744	80756	RR244C	. RING,RETAINING UHH,UHM,UHV	EA	1
180	16	PAOFF	1615-01-021-6150	97499	204-040-617-17	. HANGER,DRIVE SHAFT UHH,UHM,UHV	EA	1
180	16	PAOFF	1615-00-765-2416	97499	204-040-617-5	. HANGER,DRIVE SHAFT UHH,UHM,UHV	EA	1
180	17	PAOZZ	3110-01-030-4306	97499	204-040-623-5	. BEARING,BALL,ANNULA -ALTERNATE- UHH,UHM,UHV	EA	1
180	17	PAOZZ	3110-01-030-4306	21335	PAM9107NPPA2702	. BEARING,BALL,ANNULA UHH,UHM,UHV	EA	1
180	18	PAOZZ	1615-00-765-2408	97499	204-040-602-5	. SHAFT,SHOULDERED UHH,UHM,UHV	EA	1