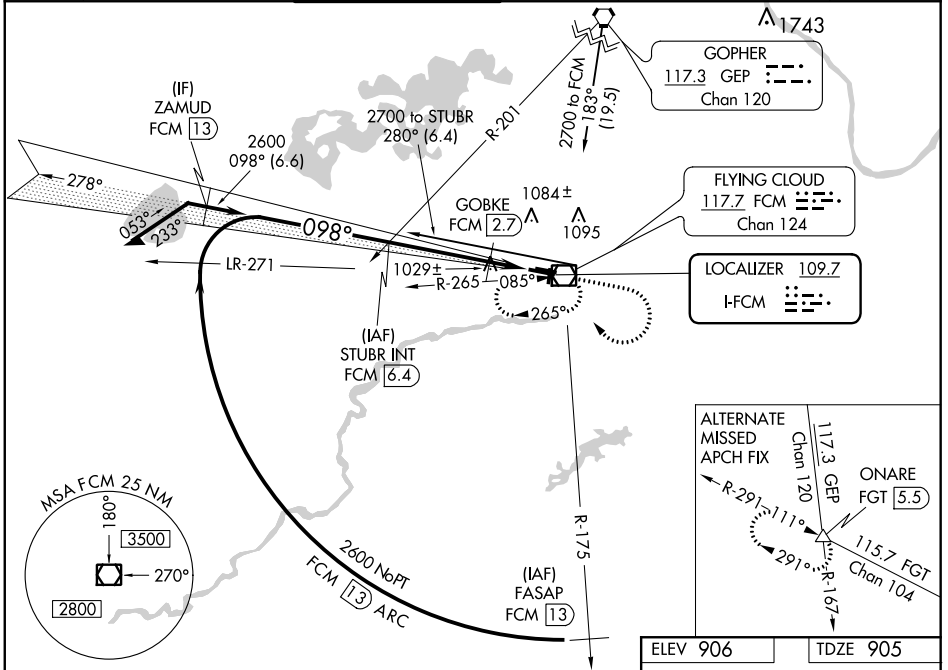


LOC I-FCM <b>109.7</b>	APP CRS <b>098°</b>	Rwy Idg TDZE Apt Elev	<b>5000</b> <b>905</b> <b>906</b>
---------------------------	------------------------	-----------------------------	---

# ILS or LOC RWY 10R

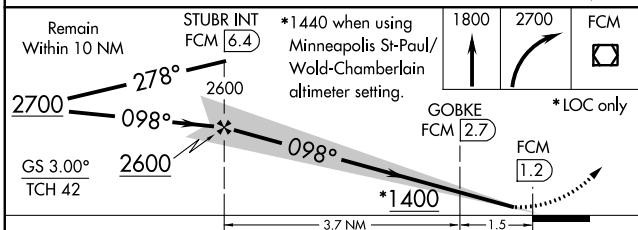
MINNEAPOLIS/ FLYING CLOUD (FCM)

<p><b>▼</b> When local altimeter setting not received, use Minneapolis-St Paul Intl/Wold Chamberlain altimeter setting and increase DA 34 feet and all MDA 40 feet, increase S-LOC Cat C and D visibility ¼ mile, GOBKE FIX minimums: Increase S-LOC Cat C visibility ¼ mile.</p>	<p><b>MALS</b>  </p>	<p><b>MISSED APPROACH:</b> Climb to 1800 then climbing right turn to 2700 direct FCM VOR/DME and hold, continue climb-in-hold to 2700.</p>			
<p><b>ATIS</b> <b>124.9</b></p>	<p><b>MINNEAPOLIS APP CON</b> <b>134.7 357.4</b></p>	<p><b>FLYING CLOUD TOWER *</b> <b>119.15 (CTAF)</b></p>	<p><b>GND CON</b> <b>121.7</b></p>	<p><b>MINNEAPOLIS CLNC DEL</b> <b>121.7</b> (When tower closed)</p>	<p><b>UNICOM</b> <b>122.95</b></p>



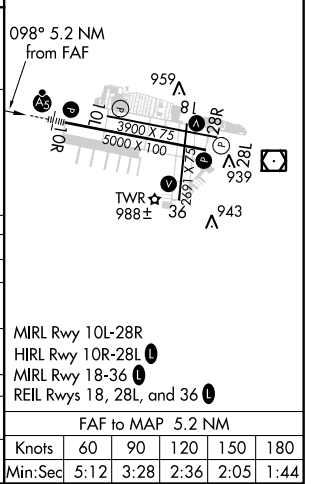
NC-1, 25 JUL 2013 to 22 AUG 2013

NC-1, 25 JUL 2013 to 22 AUG 2013



ELEV 906	TDZE 905
----------	----------

CATEGORY	A	B	C	D
S-ILS 10R	1105-½		200 (200-½)	
S-LOC 10R	1400-½	495 (500-½)	1400-¾ 495 (500-¾)	1400-1 495 (500-1)
CIRCLING	1400-1	494 (500-1)	1400-1½ 494 (500-1½)	1460-2 554 (600-2)
GOBKE FIX MINIMUMS				
S-LOC 10R	1280-½	375 (400-½)	1280-¾ 375 (400-¾)	
CIRCLING	1320-1 414 (500-1)	1360-1 454 (500-1)	1360-1½ 454 (500-1½)	1460-2 554 (600-2)



MIRL Rwy 10L-28R  
HIRL Rwy 10R-28L  
MIRL Rwy 18-36  
REIL Rws 18, 28L, and 36

FAF to MAP 5.2 NM

Knots	60	90	120	150	180
Min:Sec	5:12	3:28	2:36	2:05	1:44

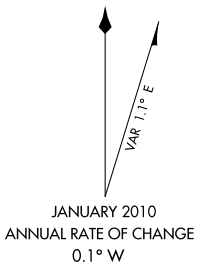
13066

# AIRPORT DIAGRAM

AL-5094 (FAA)

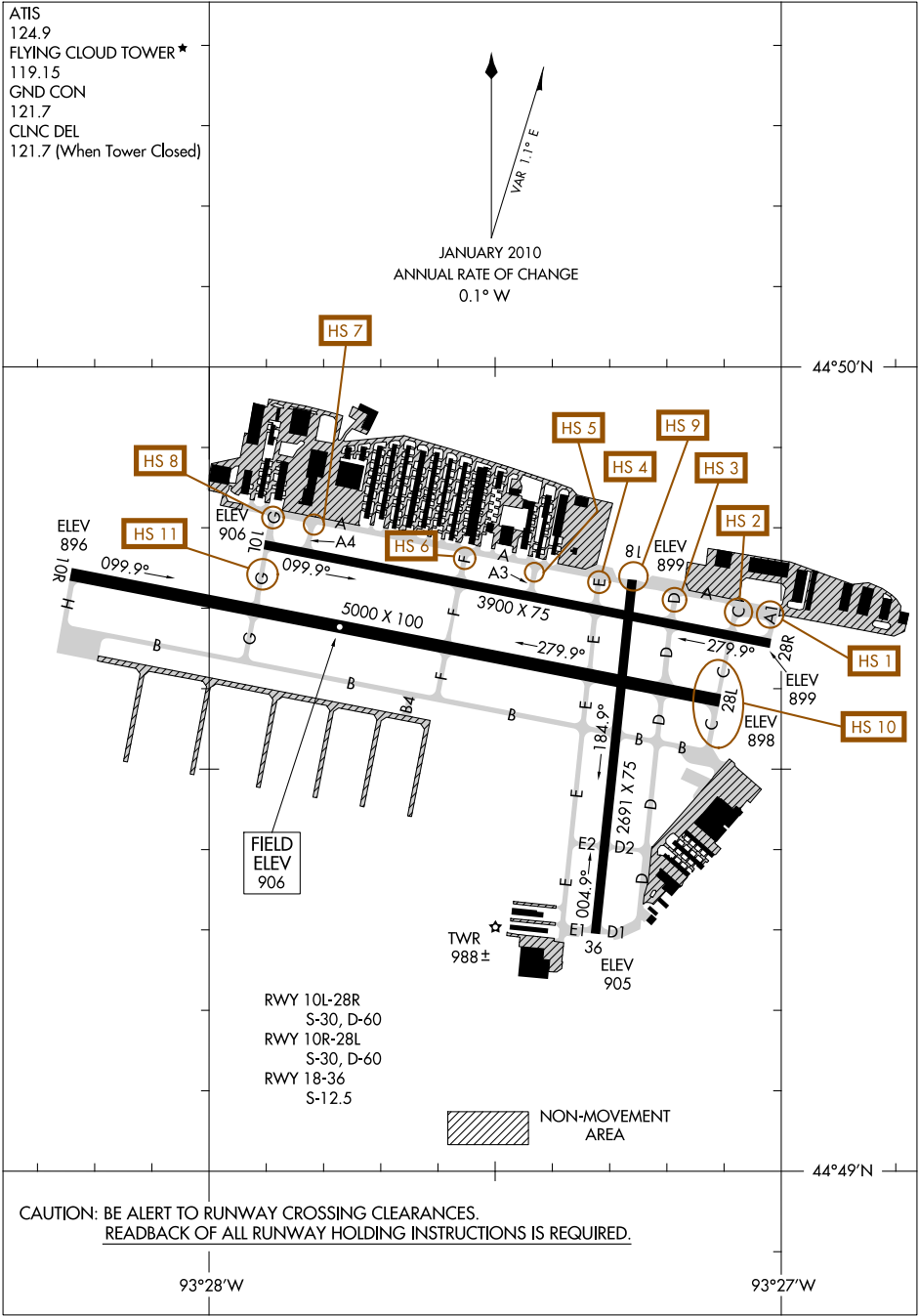
MINNEAPOLIS/FLYING CLOUD (FCM)  
MINNEAPOLIS, MINNESOTA

ATIS  
 124.9  
 FLYING CLOUD TOWER ★  
 119.15  
 GND CON  
 121.7  
 CLNC DEL  
 121.7 (When Tower Closed)



NC-1, 25 JUL 2013 to 22 AUG 2013

NC-1, 25 JUL 2013 to 22 AUG 2013



CAUTION: BE ALERT TO RUNWAY CROSSING CLEARANCES.  
 READBACK OF ALL RUNWAY HOLDING INSTRUCTIONS IS REQUIRED.

# AIRPORT DIAGRAM

13066

MINNEAPOLIS, MINNESOTA  
MINNEAPOLIS/FLYING CLOUD (FCM)