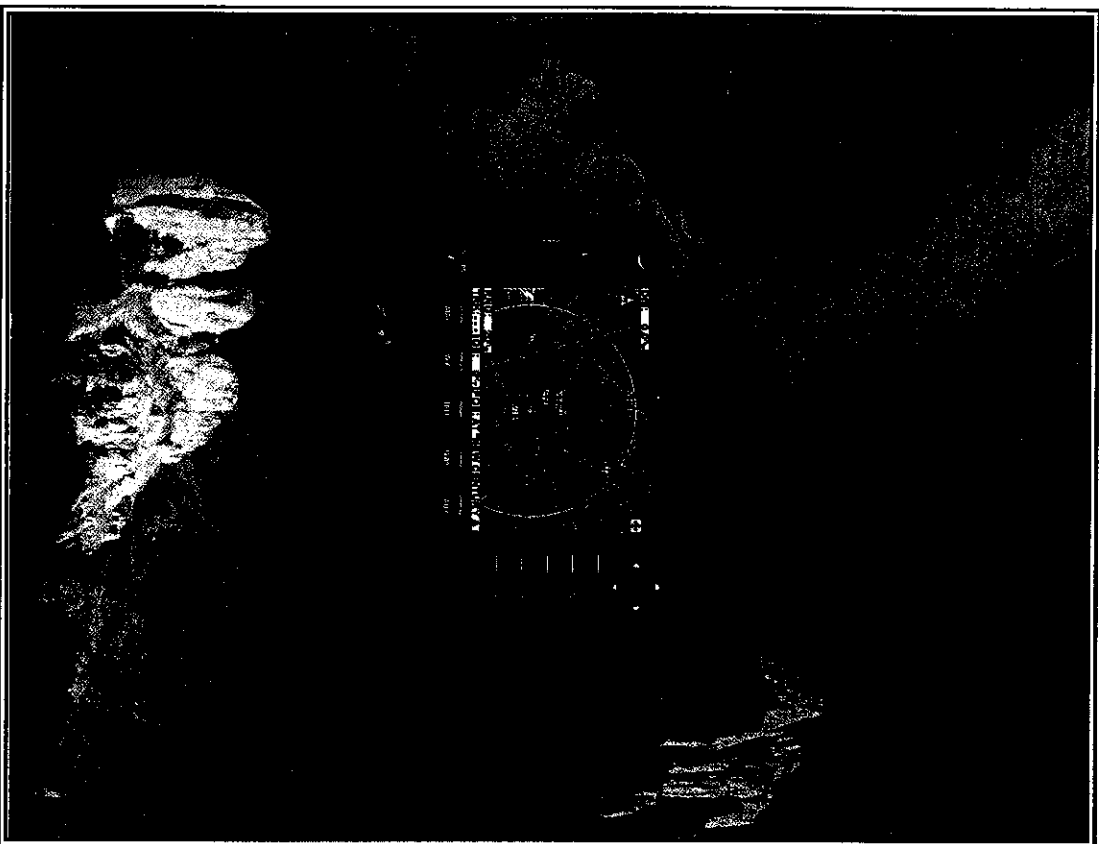


**BENDIX/KING®**

**KMD 550/850**

Multi-Function Display

Pilot's Guide



The information contained in this manual is for reference use only. If any information contained herein conflicts with similar information contained in the Airplane Flight Manual Supplement, the information in the Airplane Flight Manual Supplement shall take precedence.

**WARNING**

Prior to export of this document, review for export license requirement is needed.

**COPYRIGHT NOTICE**

©2000 Honeywell International Inc.

Reproduction of this publication or any portion thereof by any means without the express written permission of Honeywell International Inc. is prohibited. For further information contact the Manager, Technical Publications; Honeywell Business & General Aviation; One Technology Center, 23500 West 105th Street; Olathe, Kansas 66061. Telephone: (913) 782-0400.

## MAP TOPOGRAPHIC AND URBAN AREAS DISPLAY

On all TOPO ON map displays, the land is shaded to show rising ground in seven elevation levels similar to those seen on a paper chart. In addition, all built up or urban areas are shaded light gray. Oceans, rivers and lakes are blue. The levels and colors for the terrain shading vary with the data card installed and are depicted as follows:

Color	TERRAIN	
	Atlantic (MSL)	Americas & Pacific (MSL)
Light Green	0 -499 feet	0 -999 feet
Medium Green	500 - 999 feet	1000 - 1999 feet
Dark Green	1000-1999feet	2000-2999 feet
Light Brown	2000-2999 feet	3000-4999 feet
Medium Brown	3000-4999 feet	5000-8999 feet
Dark Brown	5000-8999 feet	9000-12999 feet
Dark Red	9000 feet and above	13000 feet and above

NOTE:

*Topographic elevation data is not available for certain areas of SOUTH AMERICA centering on the Amazon Basin and in EUROPE a larger portion of the Ukraine bordering Russia. Please exercise extreme caution when flying in these areas because all terrain is displayed as less than 1000 feet/500 feet respectively, on the KMD 550/850.*

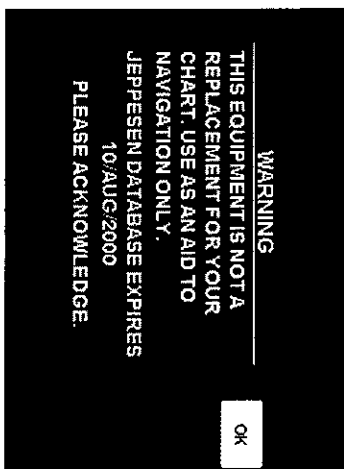
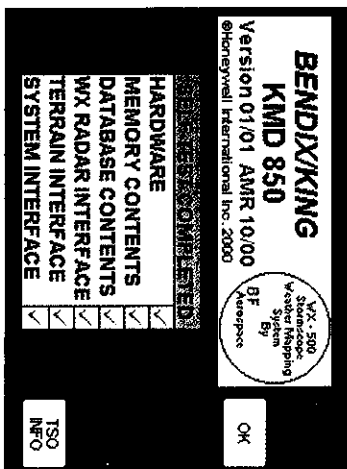
A color key can be displayed on the TOPO ON Map display. Move the joystick pointer to any terrain area away from icons or control areas and press the MORE INFO Key.

### CAUTION

**NEVER USE THE TOPOGRAPHIC ELEVATION DISPLAYED ON THIS EQUIPMENT AS YOUR SOLE REFERENCE FOR TERRAIN AVOIDANCE.**

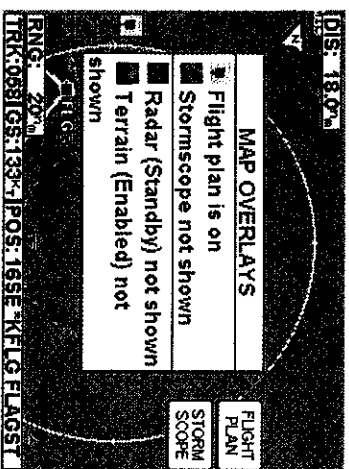
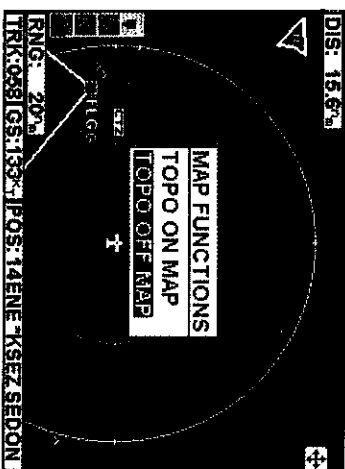
## STARTUP DISPLAY

This display will be seen after power-up. The Stormscope logo will only be present if a Stormscope is installed and enabled. Notice the self test results are also displayed. Pressing the OK softkey will show the next display. The expiration date of the Jeppesen database must be acknowledged by again pressing the OK soft key.



## POP-UP HELP DISPLAYS

Pop-up status displays are shown if a Function Key or available Power Key is pressed and held for longer than 2 seconds. These can help provide a reference for monitoring the status of selected functions and overlays. The first example is a MAP function pop-up. Second is the pop-up displayed when pressing and holding the OVLV Key.



## OPERATION

### SELECTING A MAP DISPLAY

Press the **MAP** Function Select Key to toggle between **TOPO ON** or **TOPO OFF**. With **TOPO ON** classes of data are displayed as a specific color. With **TOPO OFF** all cartographic data is automatically removed and the Jeppesen Nav Data is presented on a black background.

A color key can be displayed on the Map display when in **TOPO ON** mode. Move the joystick pointer to any terrain area away from icons or control areas and press the **MORE INFO** Key. A color key will be displayed as in Figure 14. To exit, clear by moving the joystick and press the **RESET STICK** Key.



Figure 12 - TOPO ON

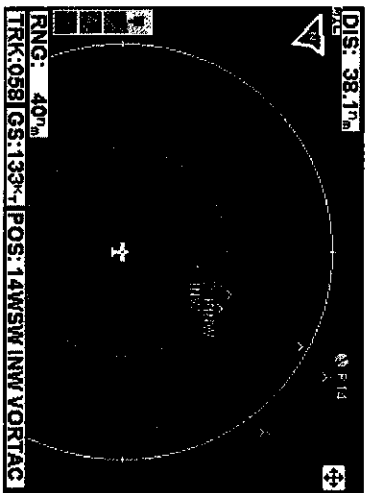


Figure 13 - TOPO OFF

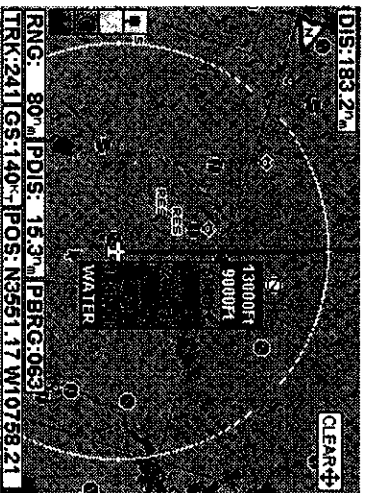


Figure 14

## USING THE MAP

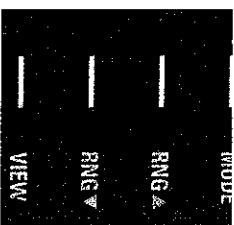
After power-up, the map will initially be displayed at a range setting of 80nm.

If there is no valid GPS fix data available, the words **NO EXTERNAL GPS DATA** will be shown across the center of the display in a box. If the fix is lost at any time during normal operation of the unit, the same **NO EXTERNAL GPS DATA** box will be overlaid on the map.

**NOTE:** Do not use the map for navigation while this message is displayed.

The map will be shown in either North Up orientation or Track Up orientation depending upon the setting selected in the Map Setup section.

The displayed data is updated every second. Press the **RNG Δ** (range up) or **RNG ∇** (range down) key at any time to zoom the map in and out to whichever one of the twelve pre-set scales desired. The available range settings are 1, 2.5, 5, 10, 20, 40, 80, 160, 320, 500, 1000 and 2000nm. The levels of detail appearing at each zoom level can be changed in the Map Setup section.



The small boxes marked **TRK:** and **GS:** display your present track and ground speed. Track will be magnetic (i.e.: true with local variation automatically taken into account).

The box marked **POS:** will display your present position as a distance and bearing from the nearest item in the database. The geographical item used to describe the position is chosen on the basis of the **POSITION REF:** setting in the Map Setup.

If you have chosen **VORs** as the position reference, your position will be reported as a distance (range) and bearing from the nearest **VOR**. If you have chosen **VORs & AIRPORTS** as the position reference and your position is within 5nm of a **VOR**, your position will be reported as a distance and bearing from that **VOR** even if there is an airport nearer (i.e. **VORs** have priority). If there is no **VOR** within 5nm then your position will be reported with respect to the nearest **VOR** or airport with no priority being given for either.

If you have chosen **ALL DATA** as the position reference, your position will be reported against a table of priorities. If your position is within five miles of an airport, it is your distance and bearing from that airport that will be displayed, even if there is a navaid, user waypoint or town nearer. **All airport names are shown preceded by an asterisk character (\*) in order to distinguish them from towns or cities with similar names that may have significantly different locations.** If your position is found to be within five miles of a **VOR** beacon and more than five miles