



HIGHWAY FACTORS GROUP

Photographs

Biloxi, Mississippi

HWY17MH010

(20 photographs)



Highway Photograph 1 – Main Street, South of Grade Crossing – Facing North



Highway Photograph 2 – Esters Boulevard (South of Tracks) – Facing Southwest



Highway Photograph 3 – Main Street Grade Crossing – Facing North



Highway Photograph 4 – Main Street Grade Crossing – Facing South



Highway Photograph 5 – Esters Boulevard (North of Tracks) – Facing Southeast



Highway Photograph 6 – Main Street, North of Grade Crossing – Facing South



Highway Photograph 7 – Grade Crossing Pavement Marking Symbol on Northbound Main Street, South of Crossing – Facing North



Highway Photograph 8 – Northbound Stop Bar at Grade Crossing – Facing North



Highway Photograph 9 – Southbound Stop Bar at Grade Crossing – Facing South



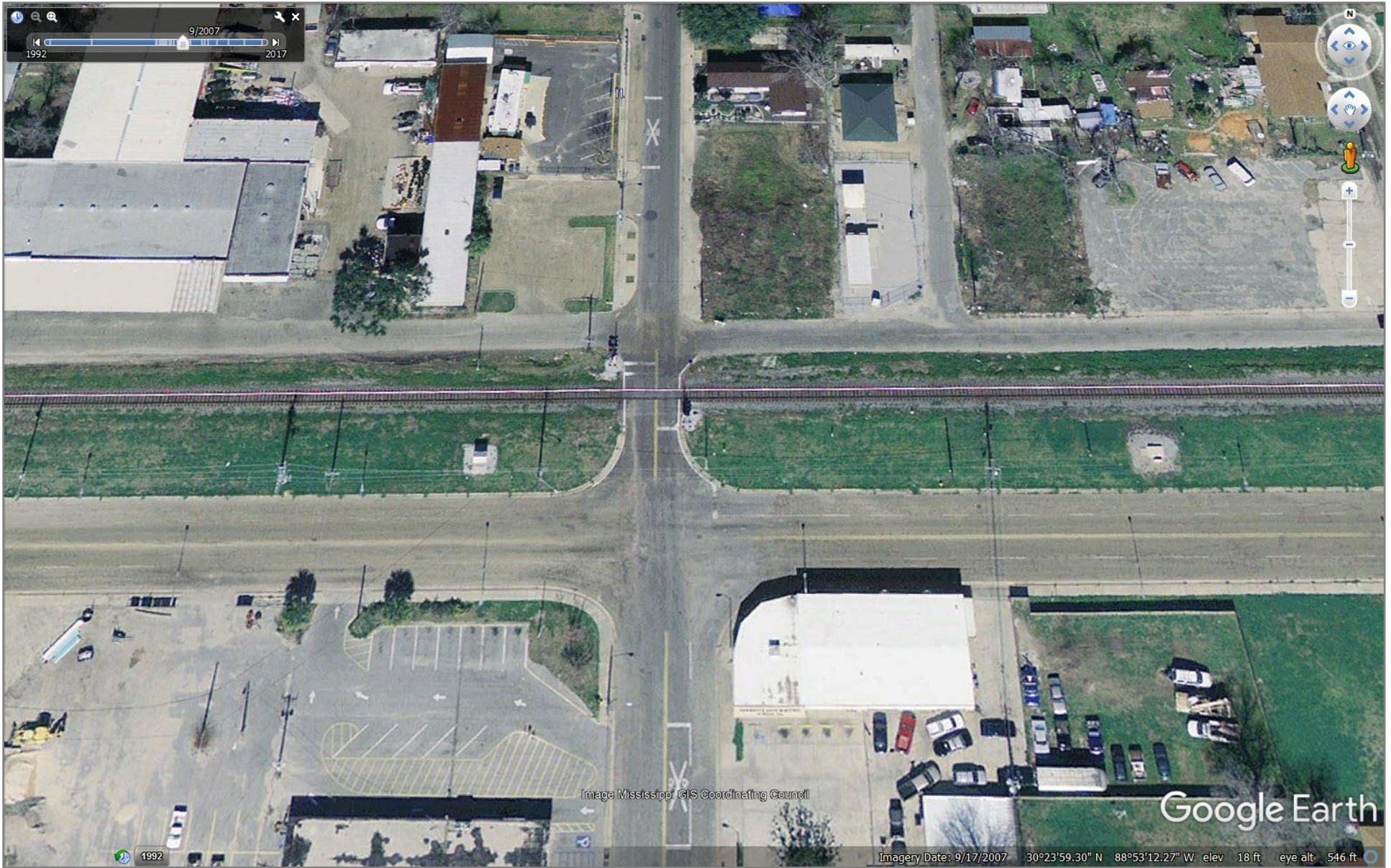
Highway Photograph 10 – Post Mounted Flashing Light Signal System with Automatic Gate, Located in Southeast Quadrant of Grade Crossing – Facing North



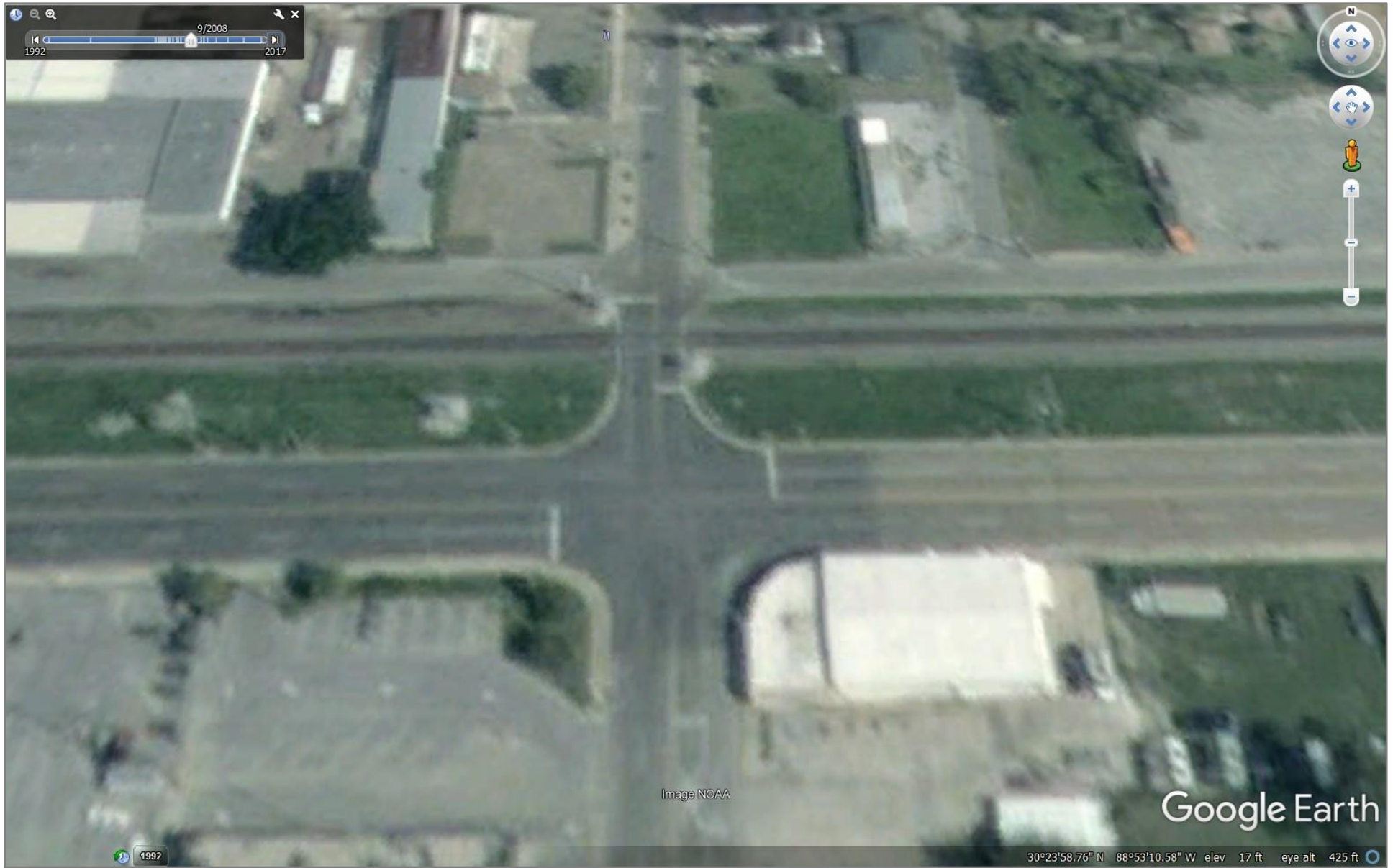
Highway Photograph 11 – Side View of Main Street Crossing – Looking West



Highway Photograph 12 – Exemplar Motorcoach Positioned on the Main Street Grade Crossing – Looking East



Highway Photograph 13 – Google Earth Aerial Image of Main Street and Esters Boulevard dated 9/17/2007 (Source: Google Earth)



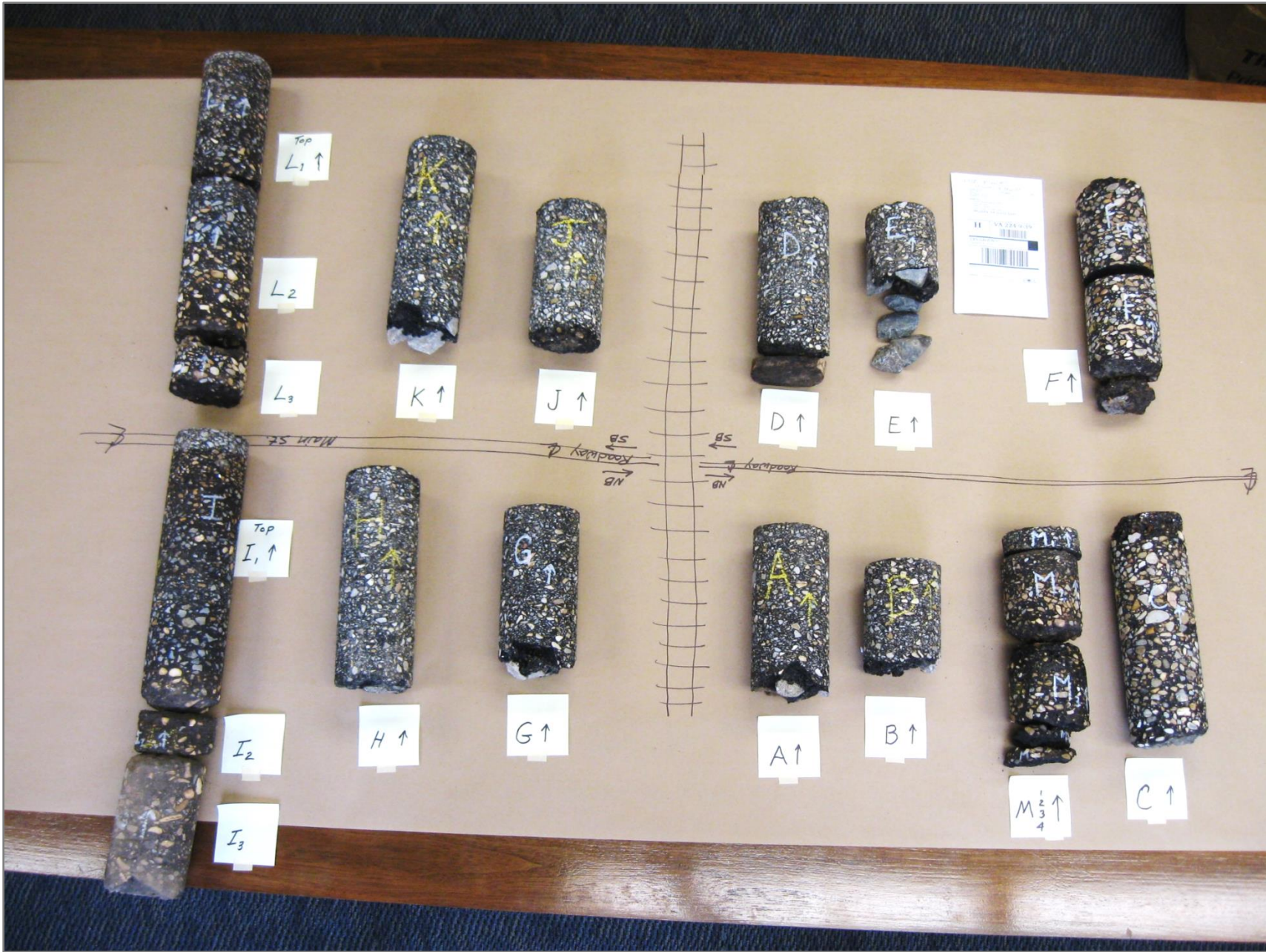
Highway Photograph 14 – Google Earth Aerial Image of Main Street and Esters Boulevard dated 9/6/2008 (Source: Google Earth)



Highway Photograph 15 – Google Maps Street View Image of Main Street Railroad-Highway Grade Crossing dated April 2013 (Source: Google Maps)



Highway Photograph 16 – Core Sample “C” After Being Removed from Roadway



Highway Photograph 17 – Overview of All 13 Asphalt Core Samples Collected from the Main Street Crossing (Source: FHWA – Turner Fairbank Highway Research Center)



Highway Photograph 18 – No Trucks Selective Exclusion Signs, Placed at Main Street Grade Crossing on March 10, 2017



Highway Photograph 19 – Additional Low Ground Clearance Grade Crossing Warning Sign Placed in Southwest Quadrant of Grade Crossing on March 13, 2017



Highway Photograph 20 – Porter Street Grade Crossing – Facing South-Southeast