



Highway Photographs 1 through 13

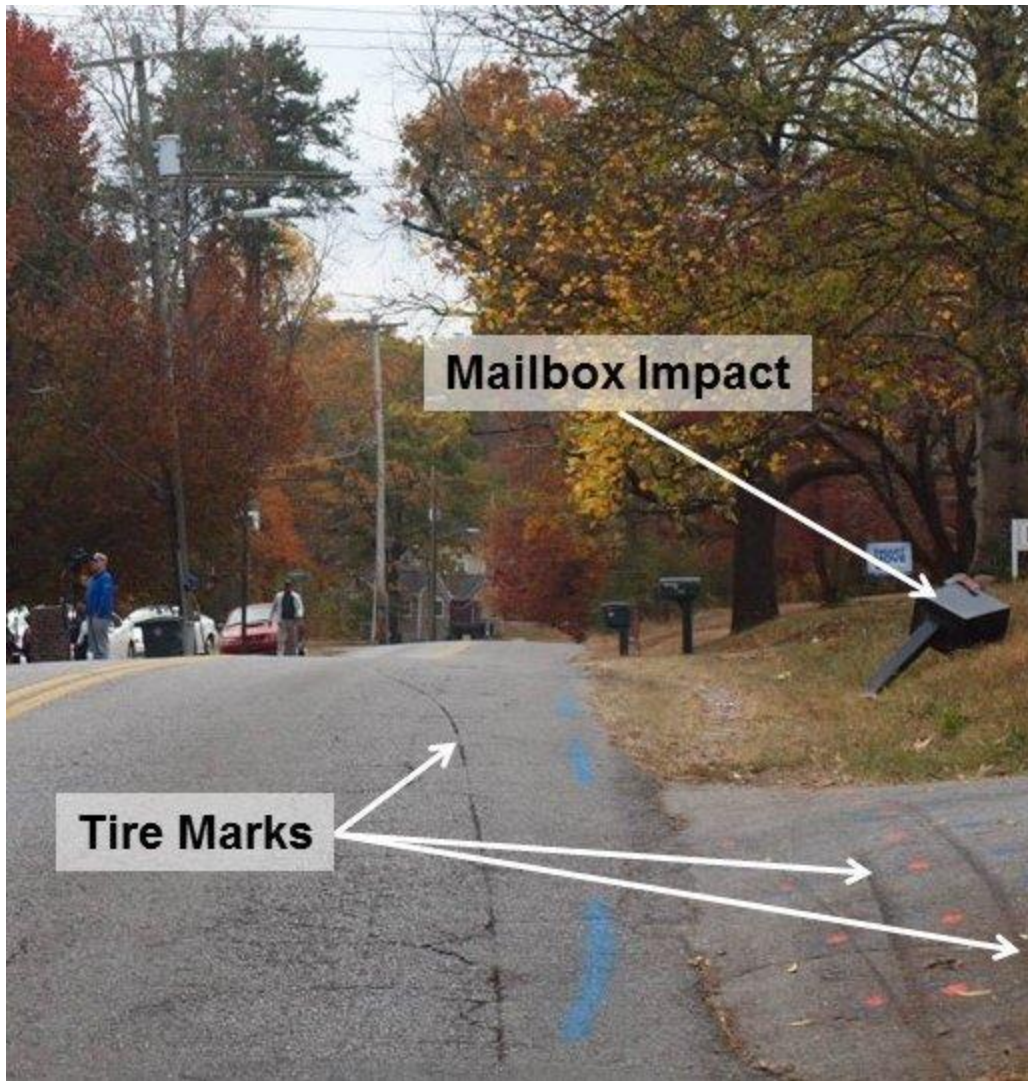
Chattanooga, TN

HWY17MH009

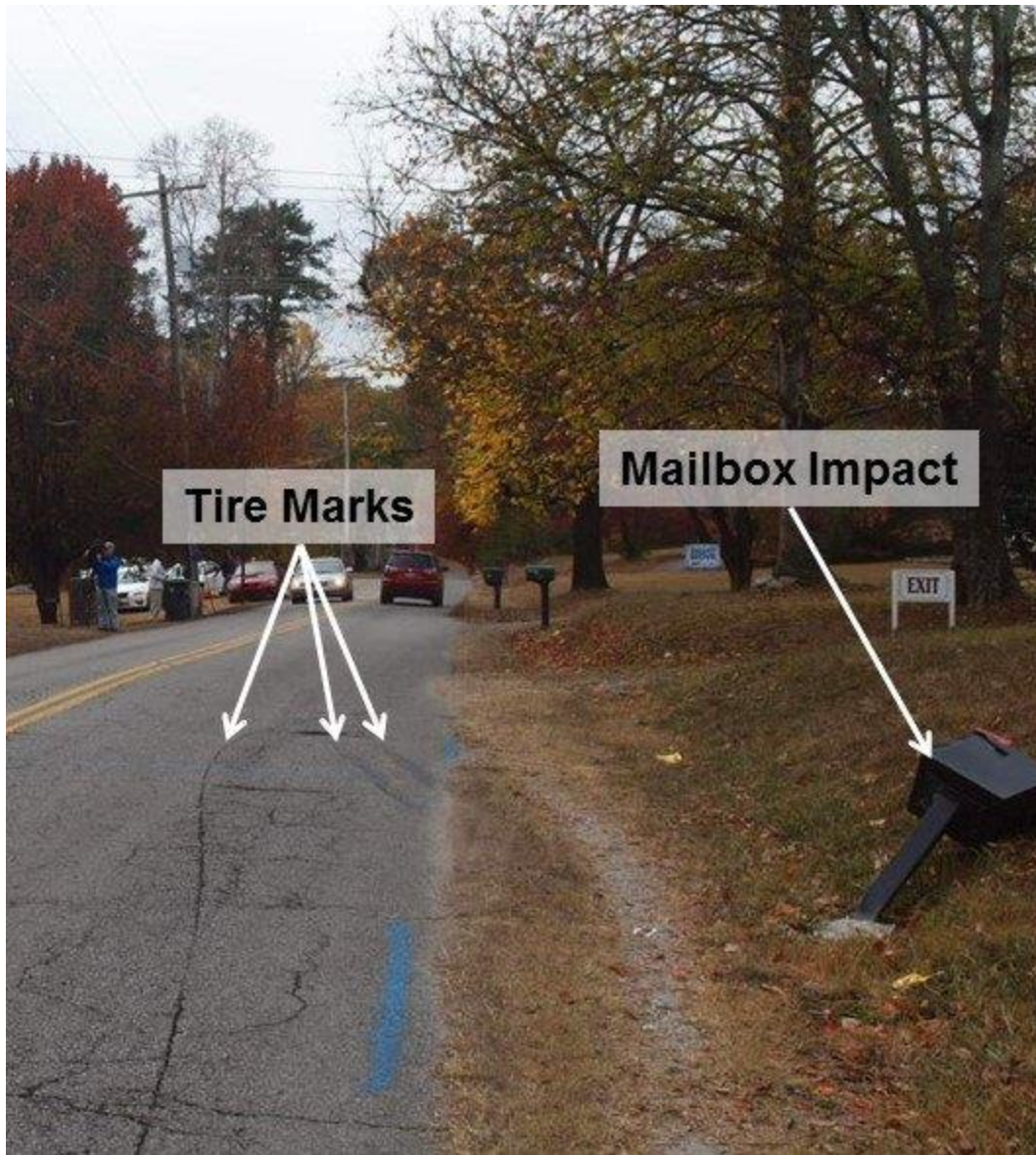
(9 pages)



Highway Photograph 1 – Tire marks left by the school bus on the grass and right side of Talley Road in the southbound direction of travel and the mailbox impact located in the background of the graphic



Highway Photograph 2 – Tire marks left by the school bus on the right side of Talley Road in the southbound direction of travel and the mailbox impact located in the background of the graphic



Highway Photograph 3 – Mailbox impact located in the foreground of the graphic and the tire marks in the southbound lane left by the school bus after the wheels returned to the pavement



Highway Photograph 4 – Mailbox impact located in the foreground of the graphic and the tire marks in the southbound lane left by the school bus after the wheels returned to the pavement



Highway Photograph 5 – Utility pole impact and tree location in relation to the edge of pavement for Talley Road (Source: Google Earth Street View modified)



Highway Photograph 6 – View of Talley Road looking in the southbound direction approximately 1,300 feet prior to the crash location illustrating the downgrade slope of 8.17 percent



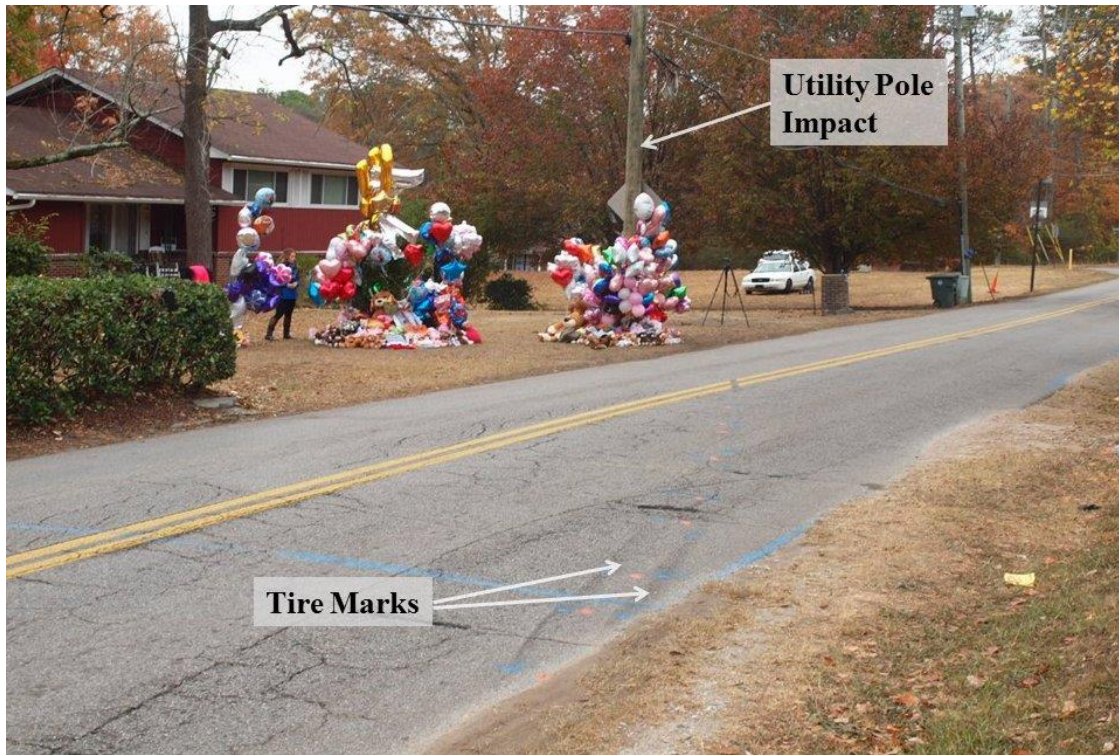
Highway Photograph 7 – View of Talley Road looking in the southbound direction approximately 800 feet prior to the crash location illustrating the downgrade slope of 4.92 percent



Highway Photograph 8 – View of Talley Road looking in the southbound direction approximately 500 feet prior to the crash location illustrating the horizontal curve to the right



Highway Photograph 9 – View of Talley Road looking in the southbound direction approximately 150 feet prior to the crash location illustrating the upgrade slope of 6.78 percent



Highway Photograph 10 – View of Talley Road looking in the southbound direction illustrating the tire marks left by the school bus prior to striking the utility pole



Highway Photograph 11 – View of the damaged utility pole after the crash



Highway Photograph 12 – View of the final rest of the school bus wrapped around the tree



Highway Photograph 13 – View of the post-crash scene looking to the north illustrating the area in which the tree was removed in the foreground of the graphic and a new utility pole was installed in the background of the graphic