



**HIGHWAY FACTORS GROUP CHAIRMAN'S
FACTUAL REPORT**

Highway Photographs 1 through 15

Palm Springs, CA

HWY17MH005

(9 pages)



Highway Photograph 1 – View of tire marks and 6,000-foot radius curve to the right in the vicinity of the crash looking in the westbound direction of I-10 in Lane #3



Highway Photograph 2 – View of the westbound travel lanes of I-10 looking to the east from the area of the crash illustrating no obstructions (i.e. shrubbery or signage) were located close to the shoulder that would have obstructed the view of the motorcoach driver as he traversed the 6,000-foot radius curve to the right in the center right lane



Highway Photograph 3 – Illustration depicting Stage 1 utility work. At the beginning of the utility work, the new tubular steel pole structure has no transmission lines attached to it spanning I-10. The wood structure and new steel pole structure are located side by side.



Highway Photograph 4 – Illustration depicting Stage 2 utility work. The top 3 lines are fastened to the new steel pole structure.



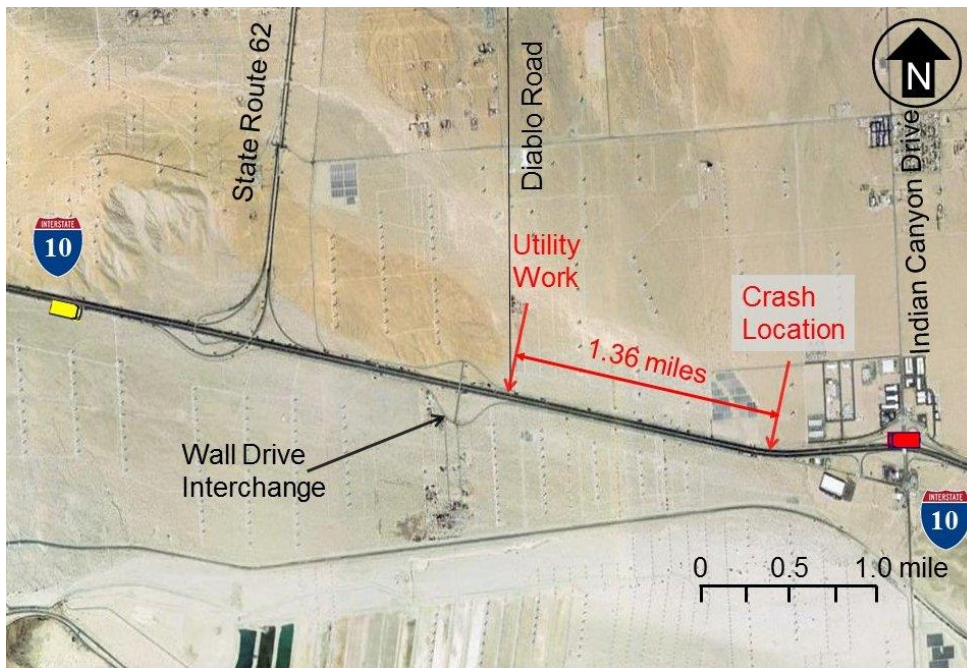
Highway Photograph 5 – Illustration depicting Stage 3 utility work. The bottom 3 lines are transferred to the new tubular steel pole. Safety devices are attached to the bottom 3 lines as an additional measure to secure the transfer.



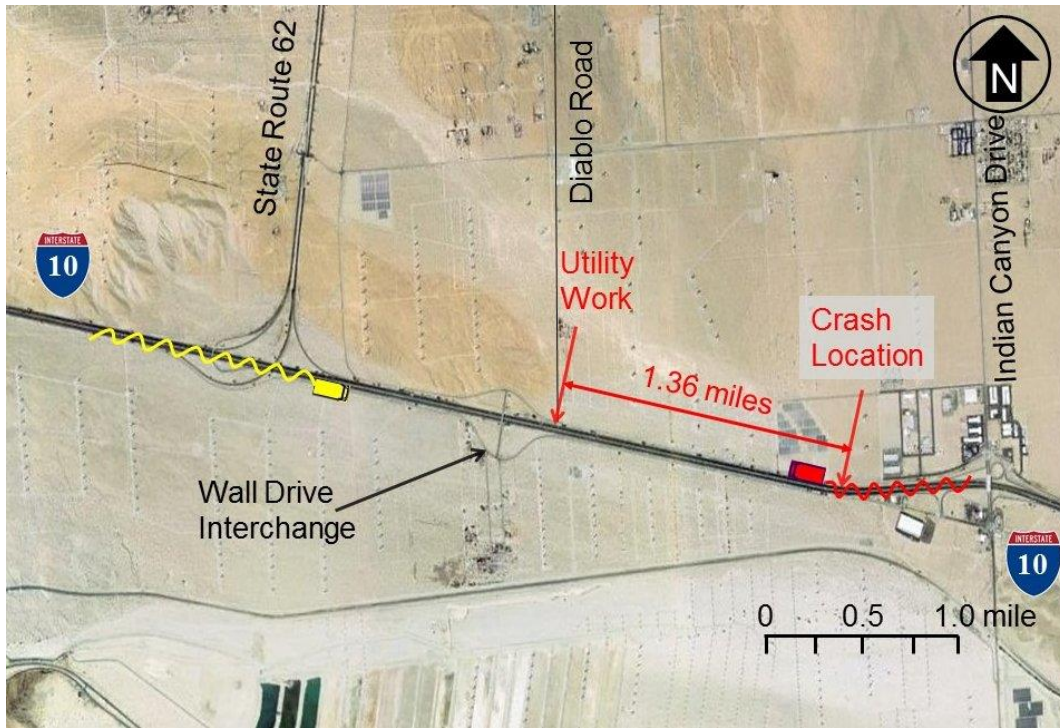
Highway Photograph 6 – Illustration depicting Stage 4 utility work. The existing H-frame wood structure is removed from the jobsite.



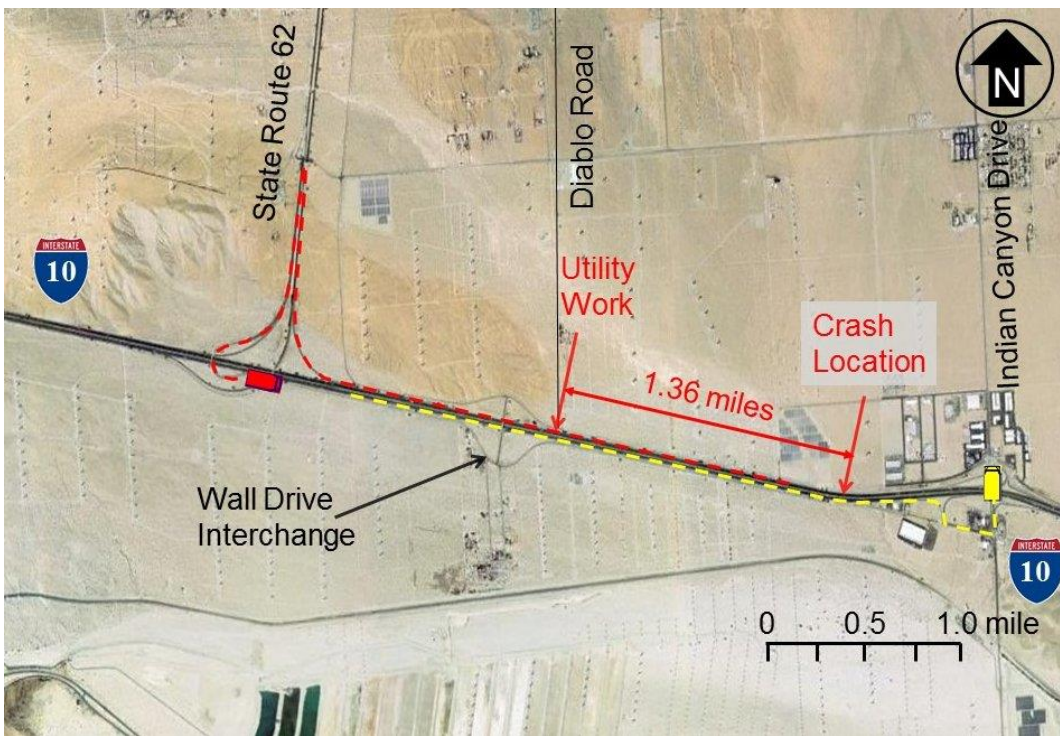
Highway Photograph 7 – View of the completed utility work taken after the crash on October 26, 2016 looking in the eastbound direction and standing on the south side of I-10



Highway Photograph 8 – Illustration depicting Stage 1 traffic break. The location of the CHP patrol vehicles highlighted in yellow and red are the staging positions before the first traffic break begins according to the MVARs video.



Highway Photograph 9 – Illustration depicting Stage 2 traffic break. The CHP patrol vehicles conduct a serpentine maneuver across all travel lanes before stopping traffic.



Highway Photograph 10 – Illustration depicting Stage 3 traffic break. The CHP patrol officers release the traffic break and proceed to their next staging positions.



Highway Photograph 11 – View of the westbound lanes of I-10 prior to the crash location standing on the Indian Canyon Drive overpass



Highway Photograph 12 – View of the westbound lanes of I-10 illustrating the completed utility work in the background standing on the Wall Drive overpass



Highway Photograph 13 – View of the posted speed limit sign of 70 miles per hour (mph) in the westbound direction of I-10 prior to the crash location



Highway Photograph 14 – View of the maximum speed limit sign for vehicles towing trailers of 55 miles per hour (mph) in the westbound direction of I-10 prior to the crash location



Highway Photograph 15 – View of the “Sonny Bono Memorial Freeway” sign in the westbound direction of I-10 prior to the crash location