

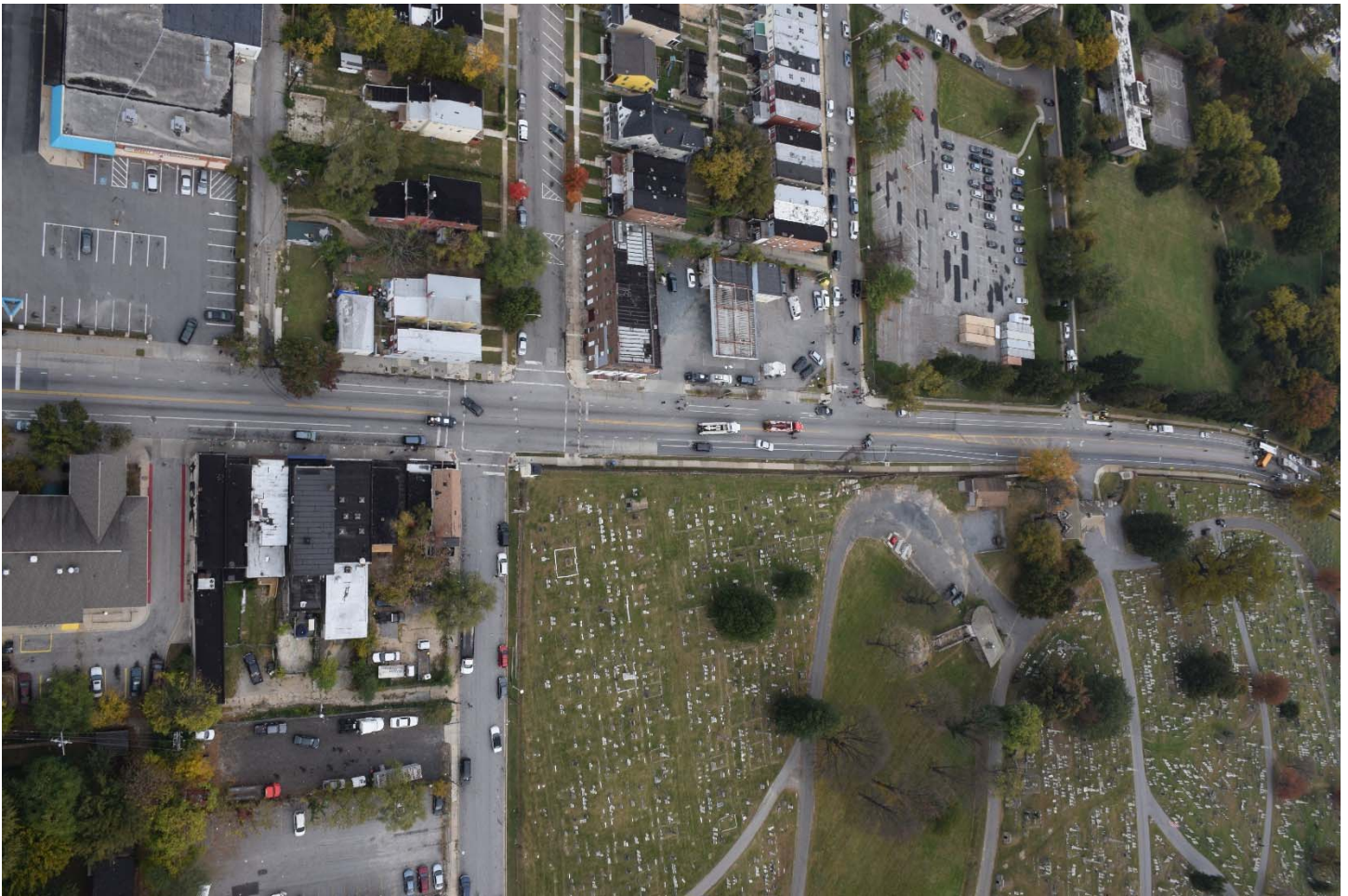


**Highway Factors Photographs**

**Baltimore, Maryland**

**HWY17MH007**

(29 pages)



Highway Photo 1 – Aerial view of Frederick Avenue from left to right or eastbound in photo. The Avenue depicted in the left of photo is Loudon Ave. where the Mustang turned right onto Frederick. The initial impact occurred in the center of the photo where the red and white tow trucks are parked. The far right edge of the photo shows the school bus and transit bus at impact location. **Highway photos 1-24 provided courtesy of the Baltimore Police Department (BPD)**



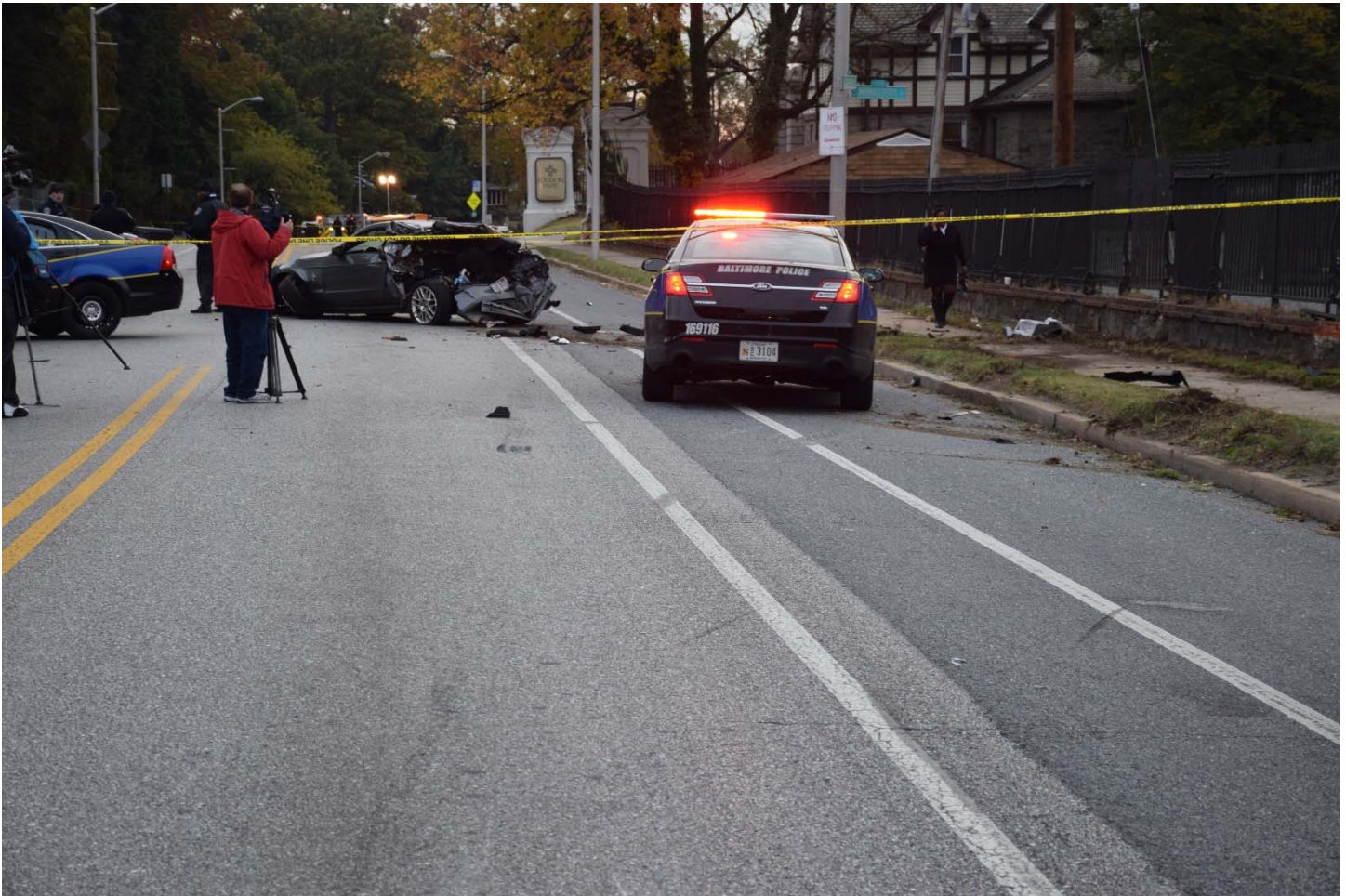
Highway Photo 2 – Eastbound view of Frederick Ave. with impact area and both buses at final positions.



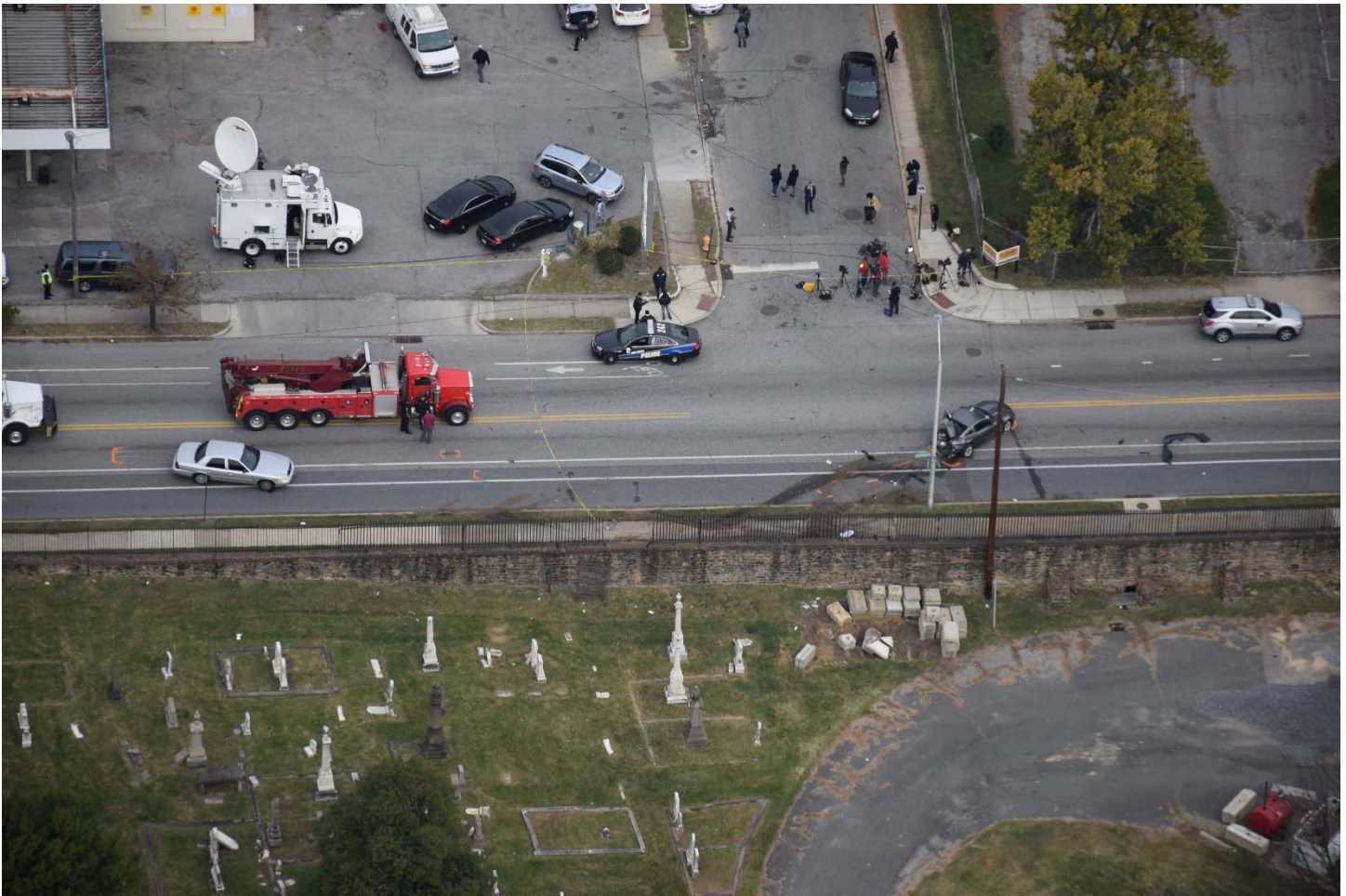
Highway Photo 3 – View of gouges and scrapes in pavement on Frederick Ave. where the school bus struck the rear of the Mustang.



Highway Photo 4 – Eastbound view of school bus and truck at their final positions east of the impact area.



Highway Photo 5 – Eastbound view of Frederick Ave. showing the Mustang’s post-crash tire friction marks, 820 feet west of the school bus-transit bus impact.



Highway Photo 6 – Aerial view of school bus-Mustang impact area depicted by orange pavement markings with the Mustang post-crash marks leading to the Loudon Cemetery wall and back into Frederick Avenue with the Mustang coming to a final position at Monastery Avenue.



Highway Photo 7 – View of the Mustangs post-crash travel path into the cemetery wall.

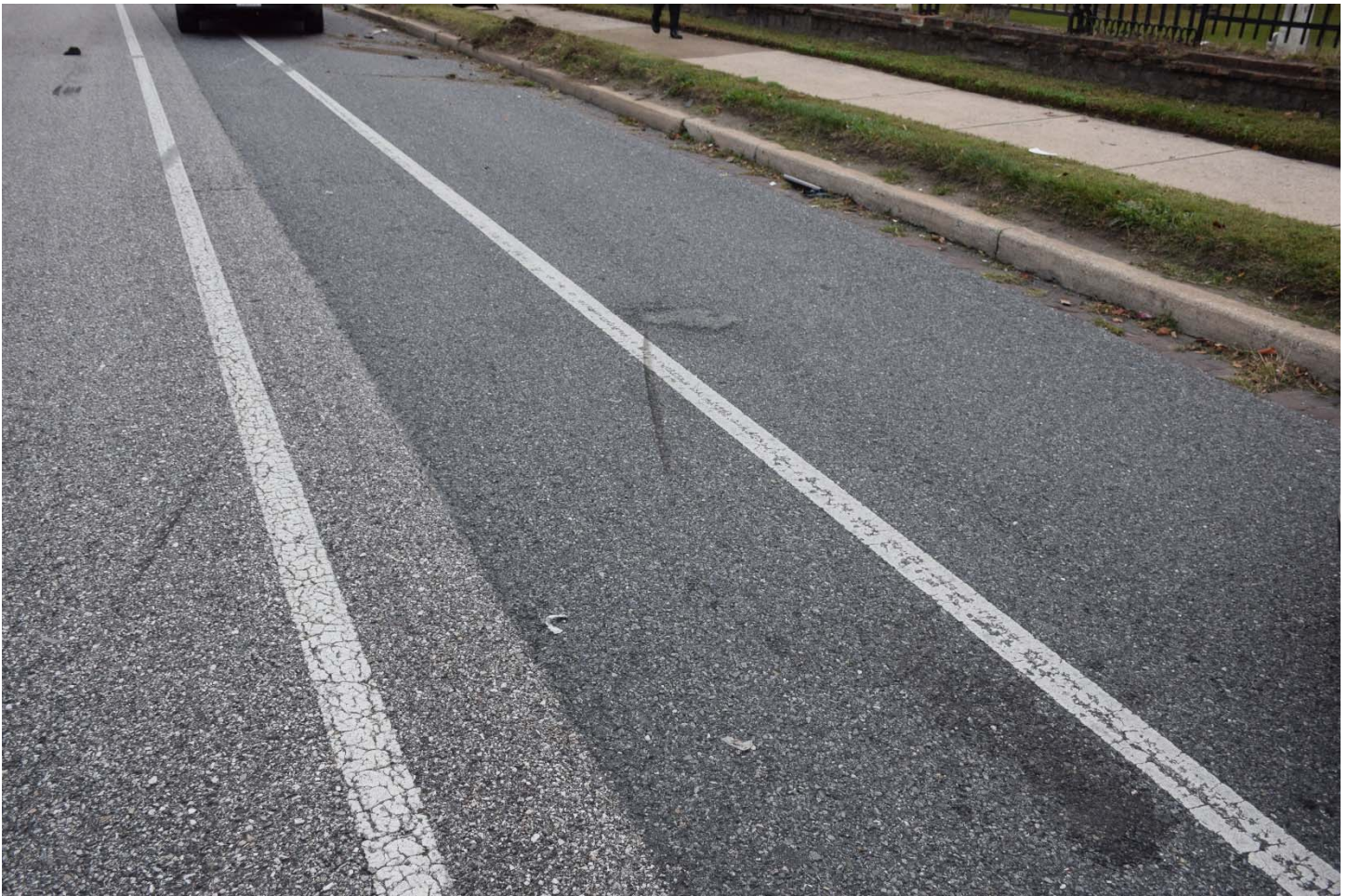




Highway Photo 8 – Closer aerial view of school bus-transit bus impact area with vehicles at their final positions, approximately 200 feet west of Morley Street.



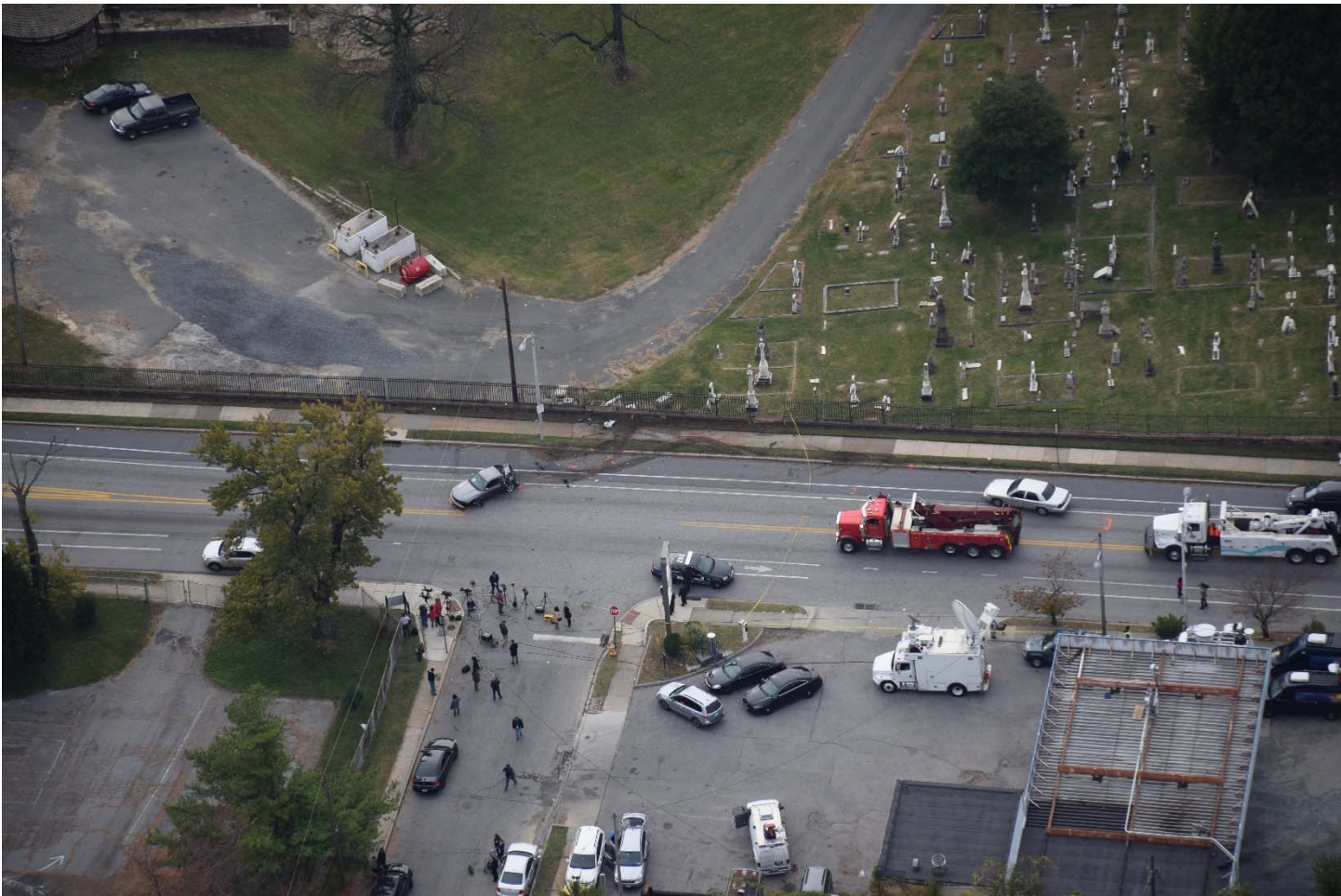
Highway Photo 9 – Additional aerial view showing the depth of penetration by the school bus into the left side of the transit bus



Highway Photo 10 – View of the Mustang’s post-crash pavement gouges leading from the initial impact into the cemetery wall.



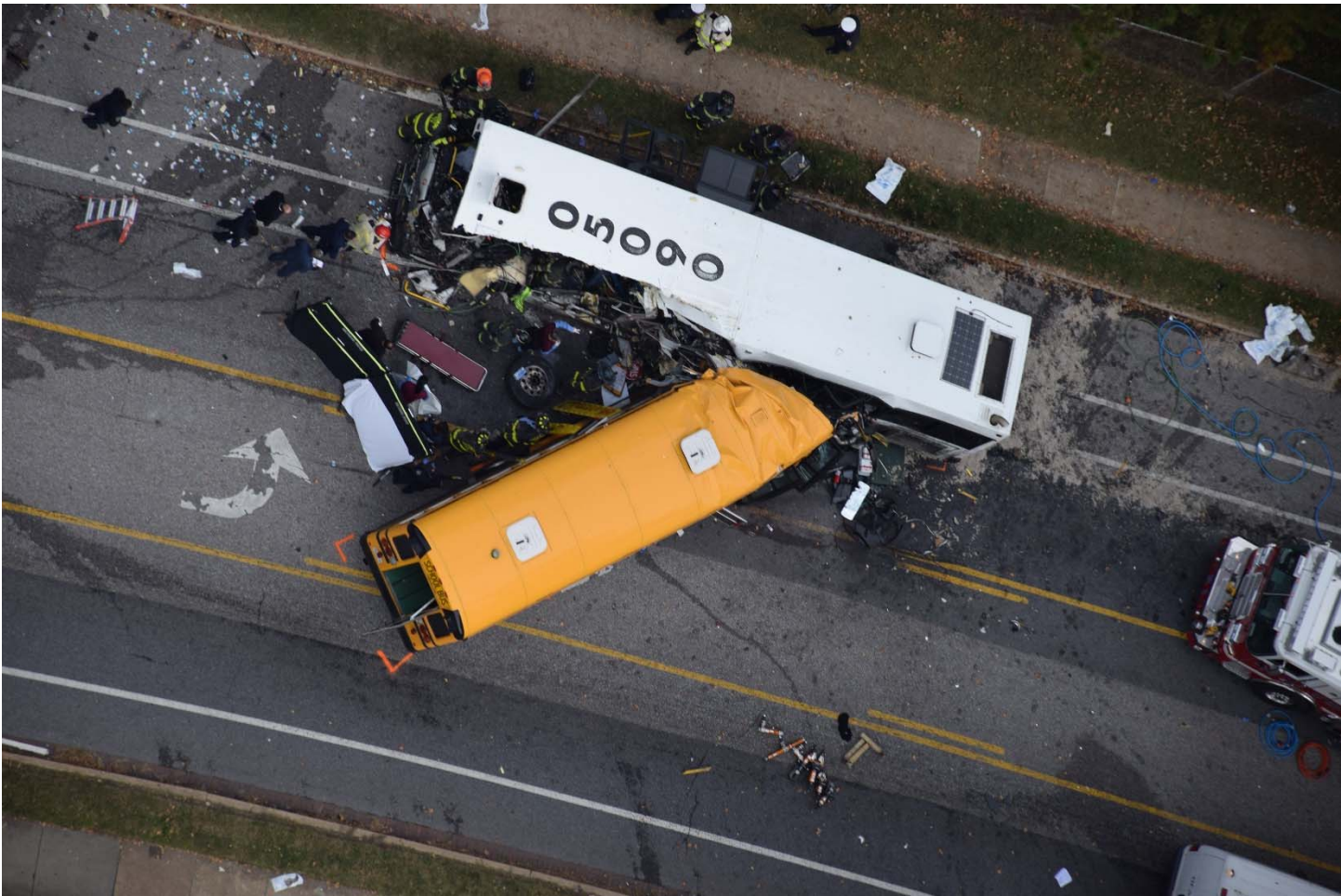
Highway Photo 11 – Aerial view of school bus-transit bus impact area.



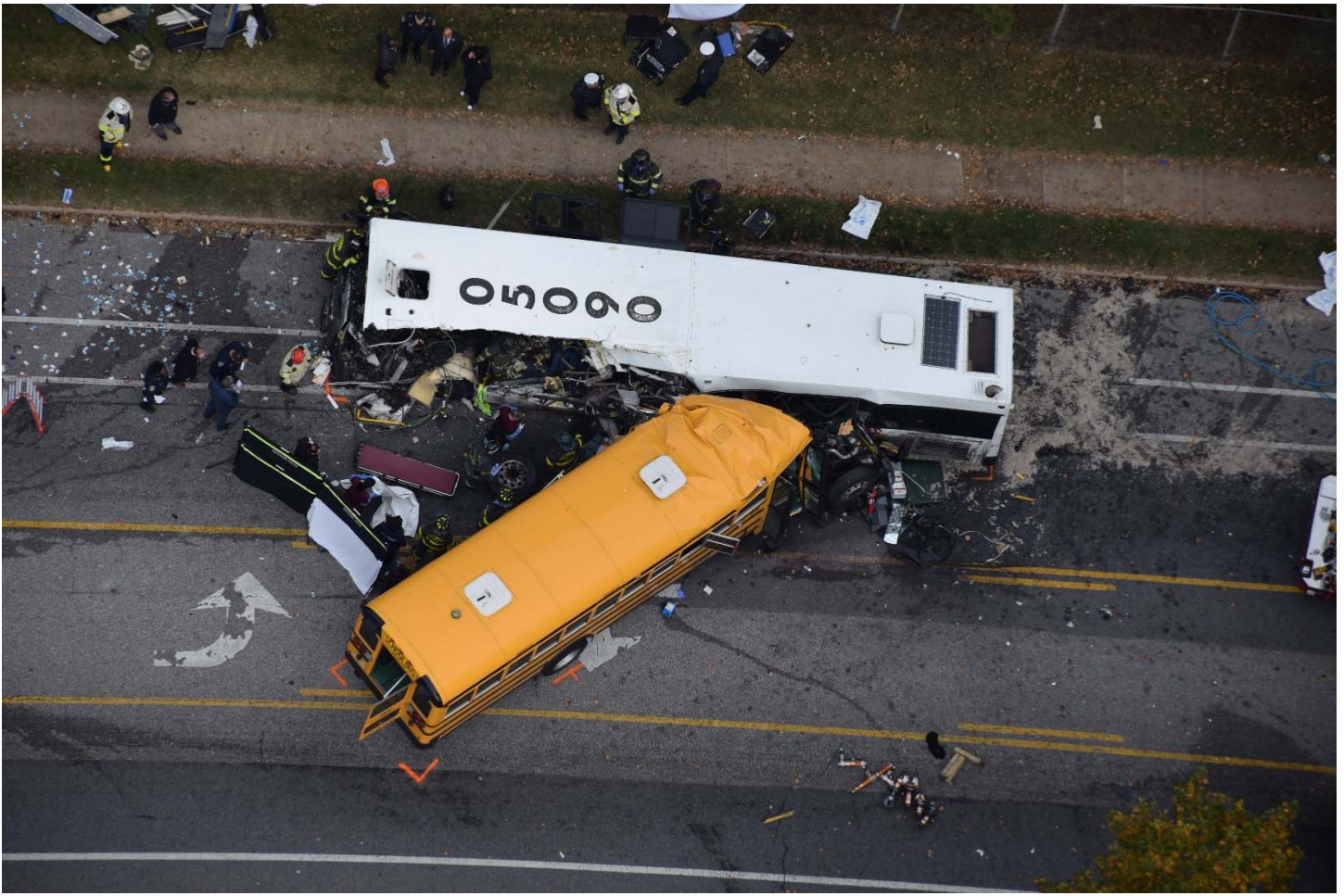
Highway Photo 12 – North to south view of Mustang impact into cemetery wall.



Highway Photo 13 – Aerial view of the school bus-transit bus impact area depicted by fluid spatter and debris forward of the transit bus.



Highway Photo 14 – Close-up aerial view of impact area between the buses and the depth of penetration into the left side of the transit bus.



Highway Photo 15 – View of vehicle liquids drainage path from the impact area toward the curb on the upper part of the photograph.





Highway Photo 16 – Close-up view of damage to cemetery wall from the Mustang’s secondary impact into the wall.



Highway Photo 17 – Continued view of Mustang’s travel path into the wall and back into the street.



Highway Photo 18 – View standing near the area of final rest of the Mustang, looking eastbound on Frederick Avenue with the school bus and transit bus impact in the far background behind the caution tape.



Highway Photo 19 – Continued view looking east on Frederick Avenue showing the buses on the other side of a slight hill crest past the entrance to the cemetery.



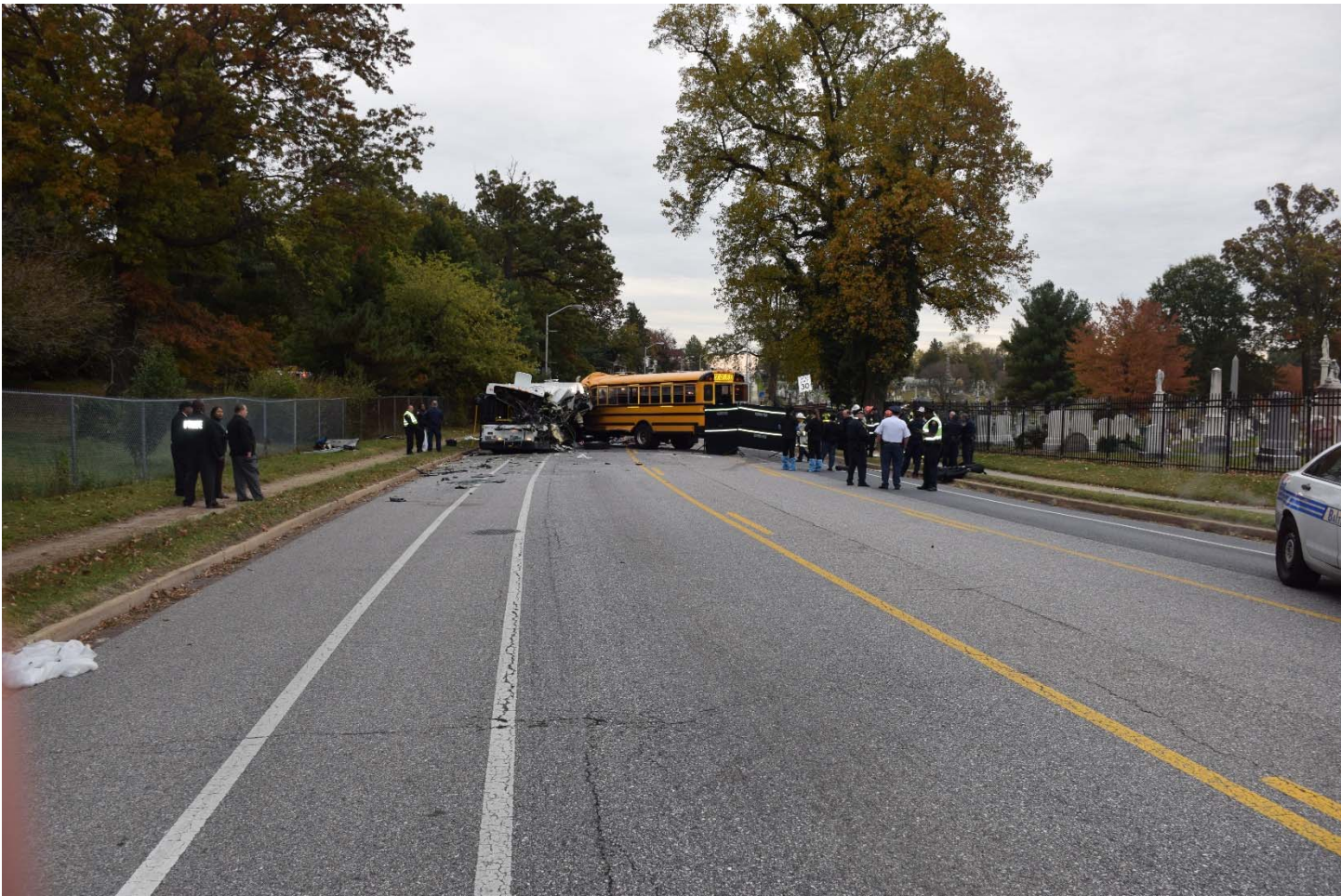
Highway Photo 20 – View of buses at their final positions on the other side of the vertical curve or hill crest. Also note the presence of highway safety lighting on both sides of Frederick Avenue, which was on at the time of the accident.



Highway Photo 21 – View showing the center turn lane on the approach to the bus impact location.



Highway Photo 22 – View showing the eastbound approach to the impact area.



Highway Photo 23 – Additional view of eastbound approach to the accident area.





Highway Photo 24 – View of wet pavement from the school bus liquids spattered onto the center turn lane and westbound lane occupied by the transit bus. Area begins where the police officer is standing in the westbound lane near the yellow line of the center turn lane.



Highway Photo 25 – Westbound view of transit buse’s approach from Morley street. Note the slope and curvature of the roadway. The impact area is near where the curve begins in the area covered by the shade of the trees.



Highway Photo 26 – Eastbound view of School bus driver’s approach taken the day after the accident. Note the downhill slope and curvature of the roadway.



Highway Photo 27 – Additional view of eastbound approach with impact area located in the photo area where the tree shade crosses the pavement adjacent to the 30 mph speed limit sign.



Highway Photo 28 – View of eastbound approach to the curve with the impact area and Morley street in the background.