



**HIGHWAY FACTORS AND RAILROAD  
GRADE CROSSING GROUP**

**Photographs**

**Crozet, Virginia**

**HWY18MH005**

(7 photographs)



Highway and Rail Crossing Photograph 1 – Lanetown Road, North of Grade Crossing – Facing South-Southwest



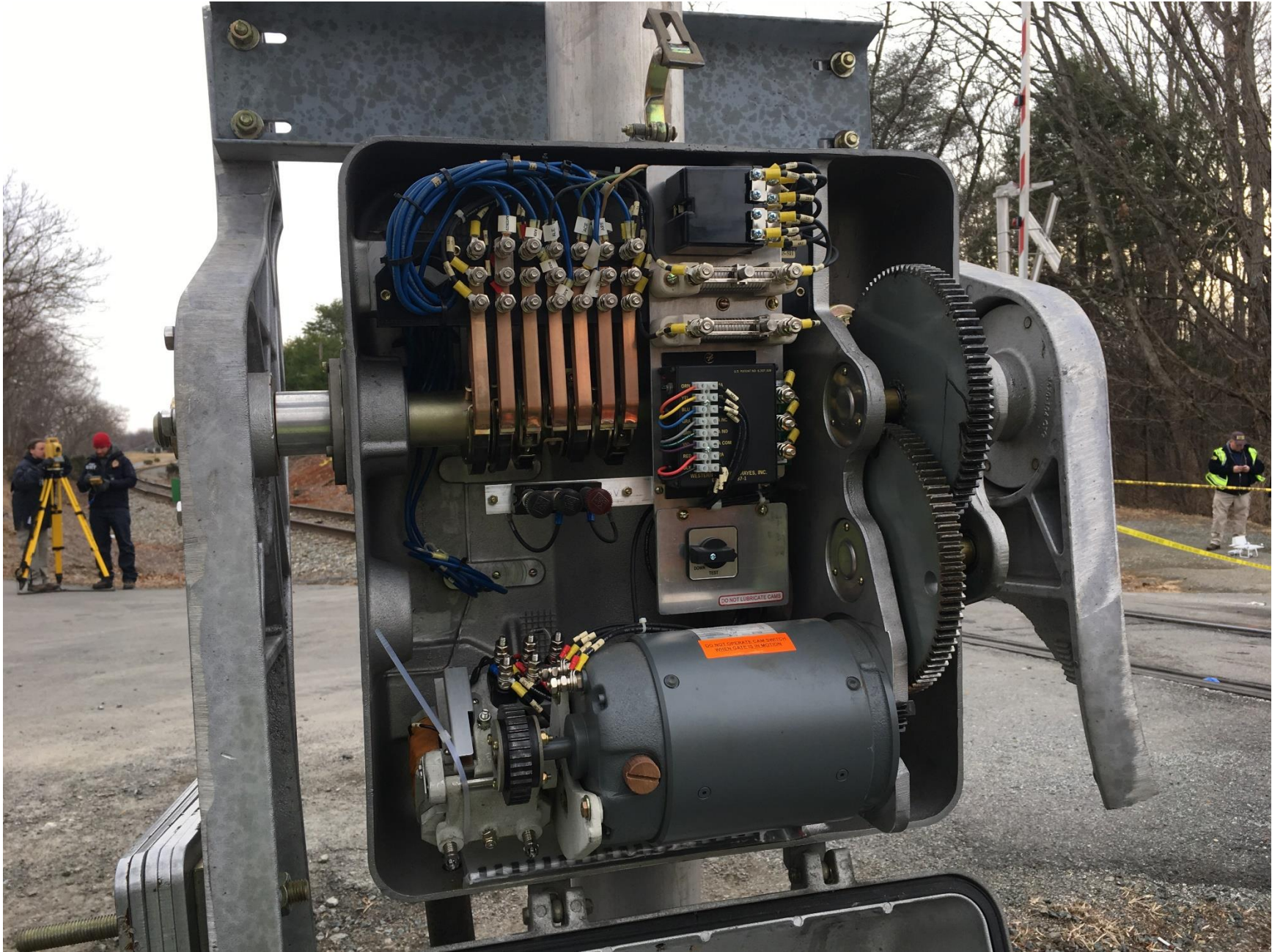
Highway and Rail Crossing Photograph 2 – Parallel Grade Crossing Warning Sign and Low Ground Clearance Grade Crossing Warning Sign with Supplemental Arrow Plaque on Railroad Avenue – Facing West-Northwest



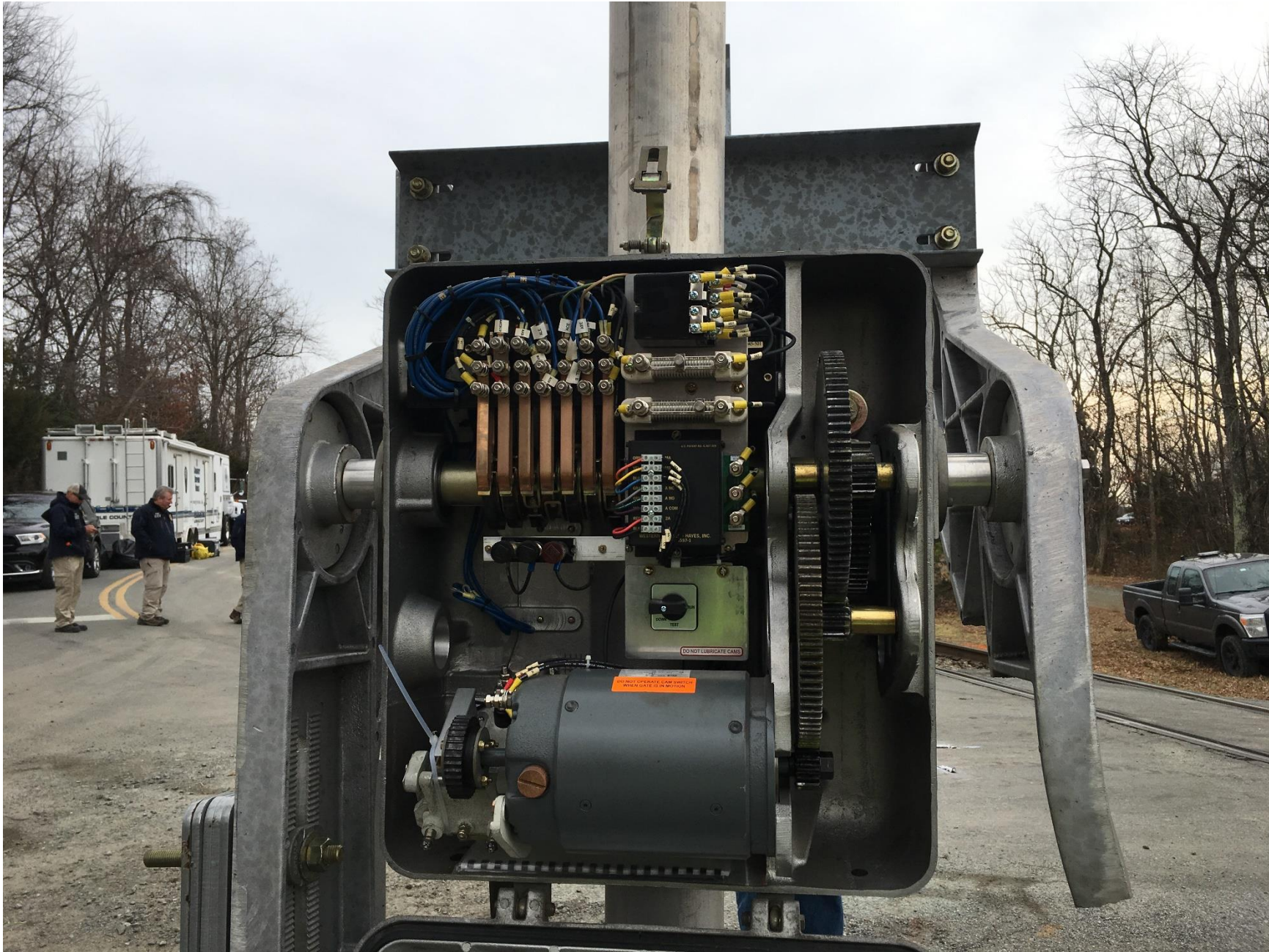
Highway and Rail Crossing Photograph 3 – Low Ground Clearance Grade Crossing Warning Sign with 15 mph Advisory Speed Plaque – Facing West



Highway and Rail Crossing Photograph 4 – Grade Crossing Advanced Warning Sign with Grade Crossing Pavement Marking – Facing West



Highway and Rail Crossing Photograph 5 – Grade Crossing Warning System, Gate Mechanism for North Gate Arm



Highway and Rail Crossing Photograph 6 – Grade Crossing Warning System, Gate Mechanism for South Gate Arm



Highway and Rail Crossing Photograph 7 – Signal Mast-Mounted Emergency Notification Sign