

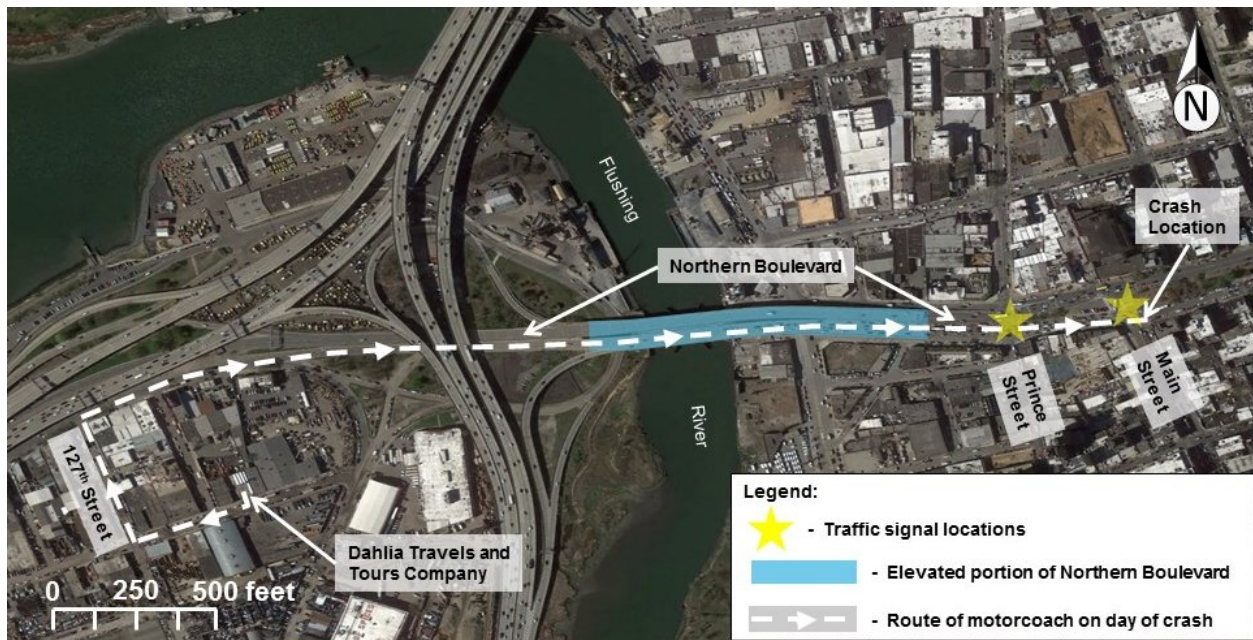


Highway Factors Photographs 1 through 10

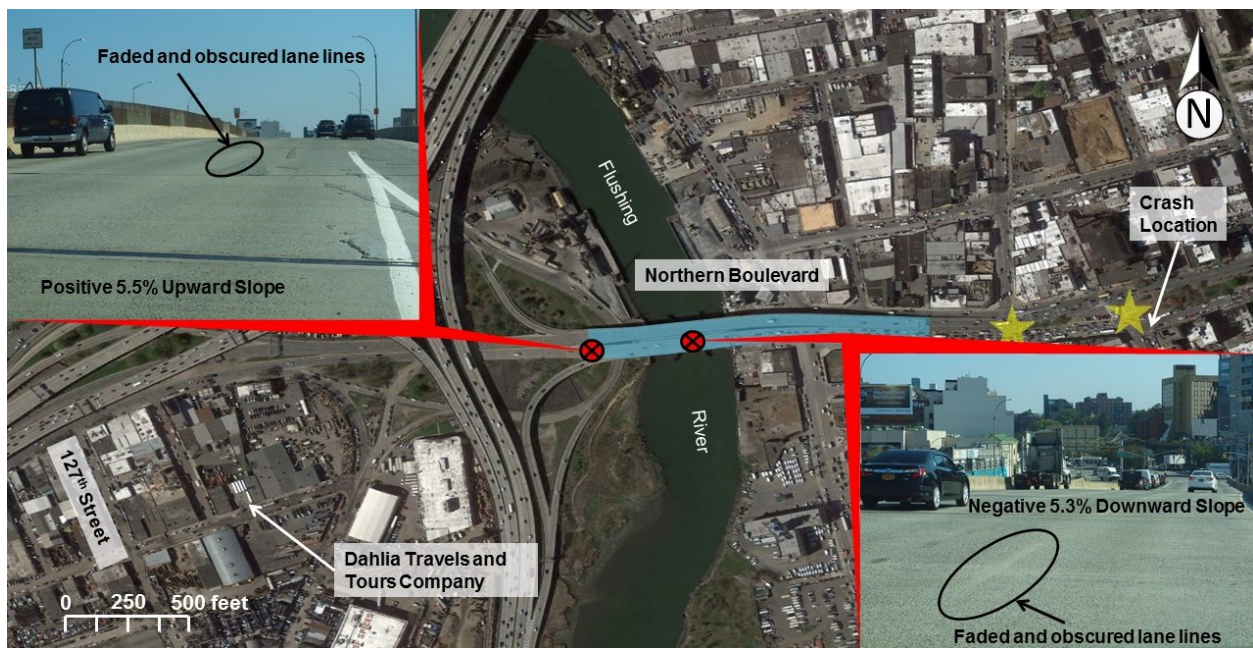
Flushing, NY

HWY17MH015

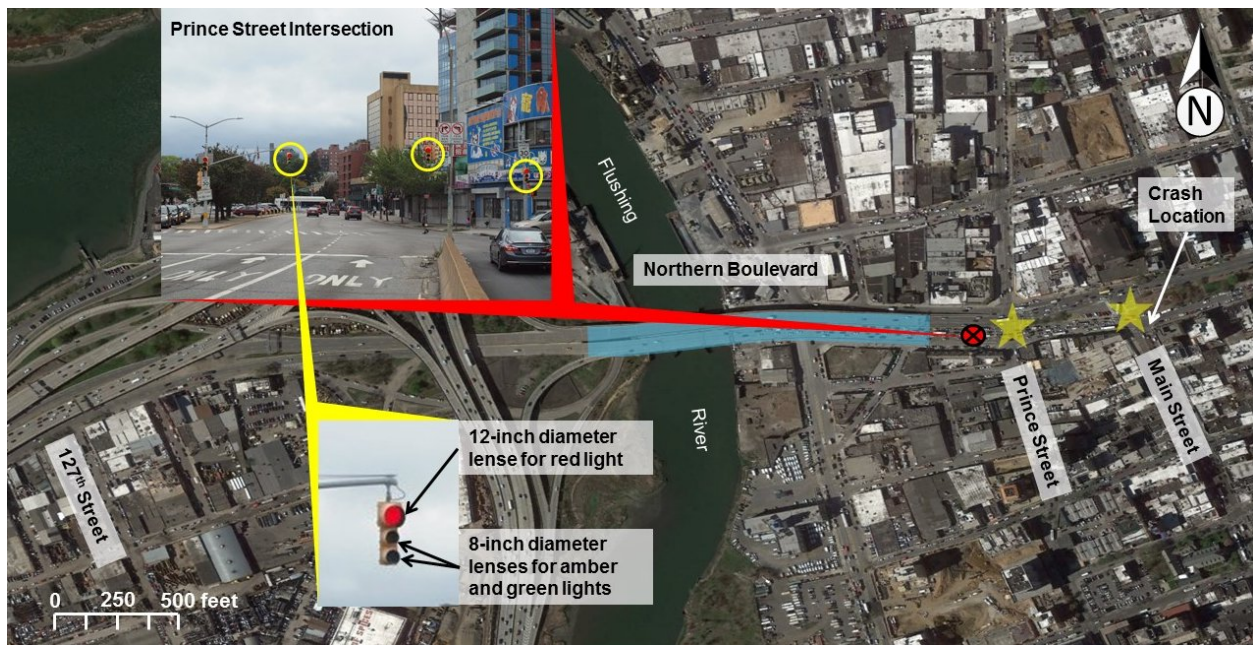
(6 pages)



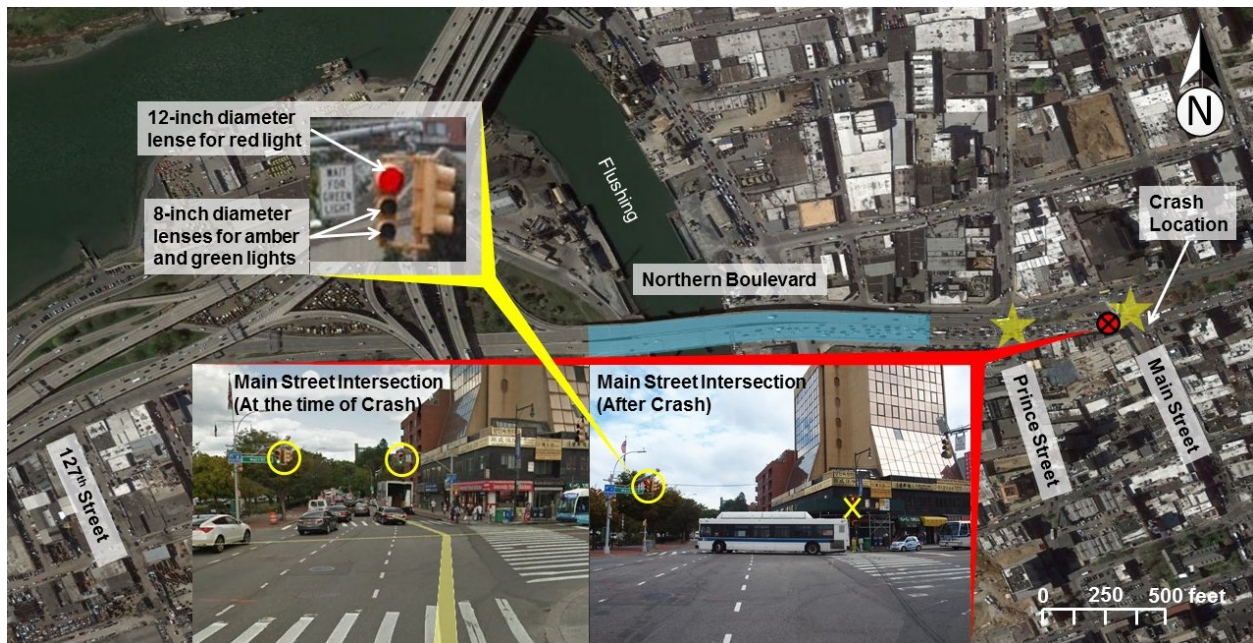
Highway Factors Photo 1 - View of the traffic signal locations and elevated portion of Northern Boulevard (Source: Google Earth Maps revised)



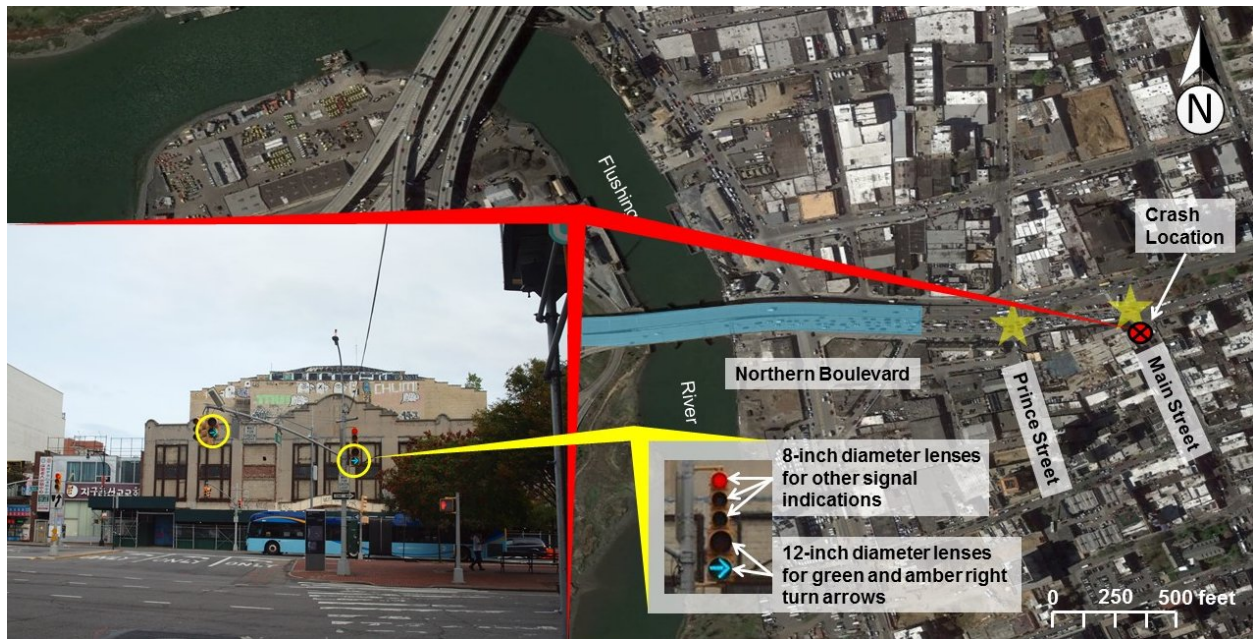
Highway Factors Photo 2 - View of the vertical grades on elevated portion of Northern Boulevard (Source: Google Earth Maps revised)



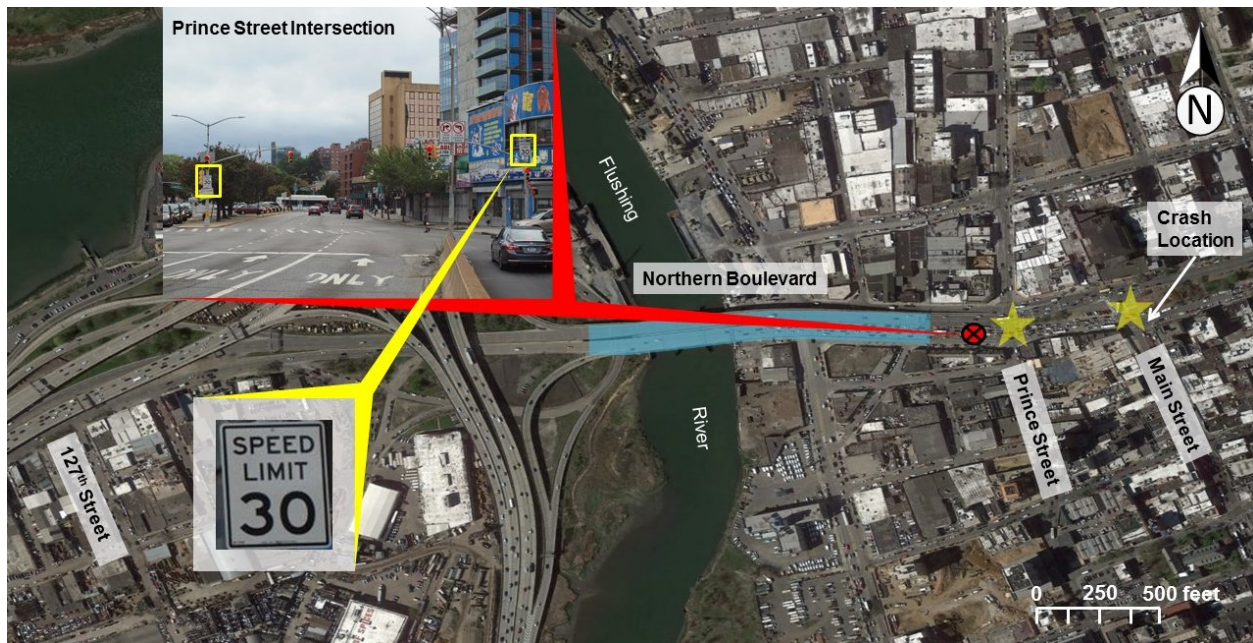
Highway Factors Photo 3 – View of the Prince Street intersection looking in the eastbound direction of Northern Boulevard toward the crash location (Source: Google Earth Maps revised)



Highway Factors Photo 4 – View of the Main Street intersection looking in the eastbound direction of Northern Boulevard toward the crash location (Source: Google Earth Maps revised)



Highway Factors Photo 5 – View of the Northern Boulevard intersection looking in the northbound direction of Main Street toward the crash location (Source: Google Earth Maps revised)



Highway Factors Photo 6 – View of the Prince Street intersection looking in the eastbound direction of Northern Boulevard toward the crash location indicating the speed limit was 30 miles per hour (mph) (Source: Google Earth Maps revised)



Highway Factors Photo 7 – View of the traffic signal pole and fire department call box demolished as a result of the crash (Source: Google Earth Maps revised)



Highway Factors Photo 8 – View of the approximate location of the New York Metropolitan Transit Administration bus turning right from Main Street onto Northern Boulevard at the time of the crash



Highway Factors Photo 9 – View of the scaffolding placed in front of the building located in the southeast corner of the Northern Boulevard and Main Street intersection immediately after the crash



Highway Factors Photo 10 - View of Northern Boulevard in the vicinity of the crash location looking back towards the bridge over the Flushing River