

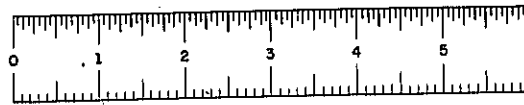


**Highway Factors Attachment – Vertical Profile of Northern Boulevard over Flushing River**

**Flushing, NY**

**HWY17MH015**

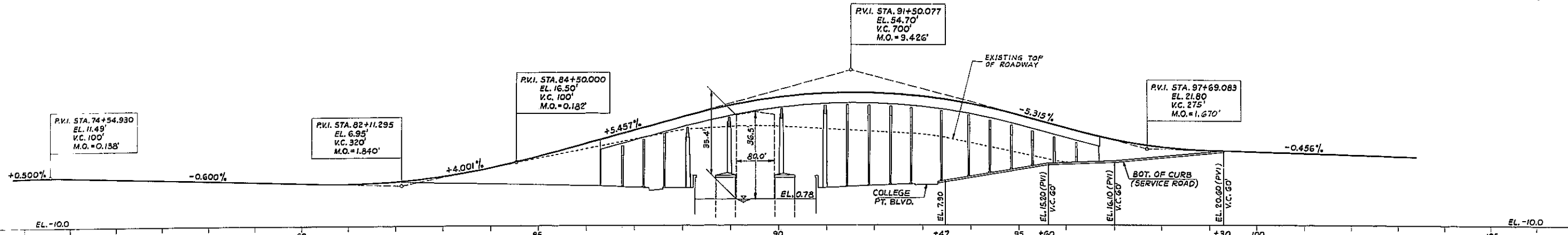
(2 pages)



D95697

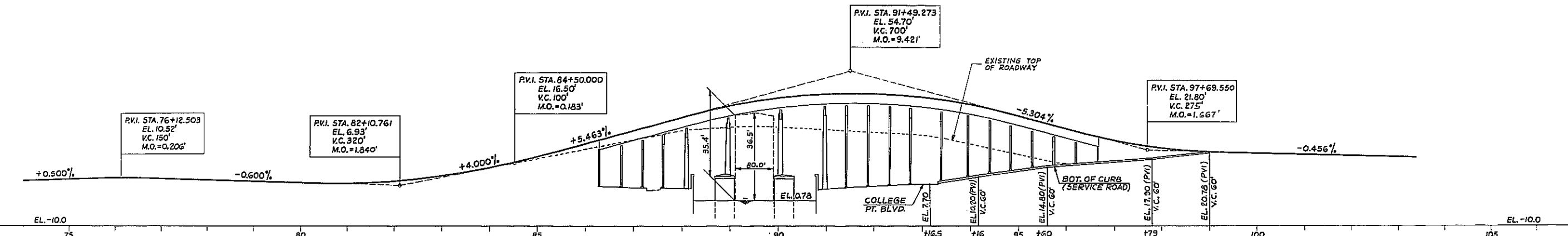
F.A. PROJ. NO.  
BRF-811 (10)

CONTRACT THX230B SHEET 4 OF 104



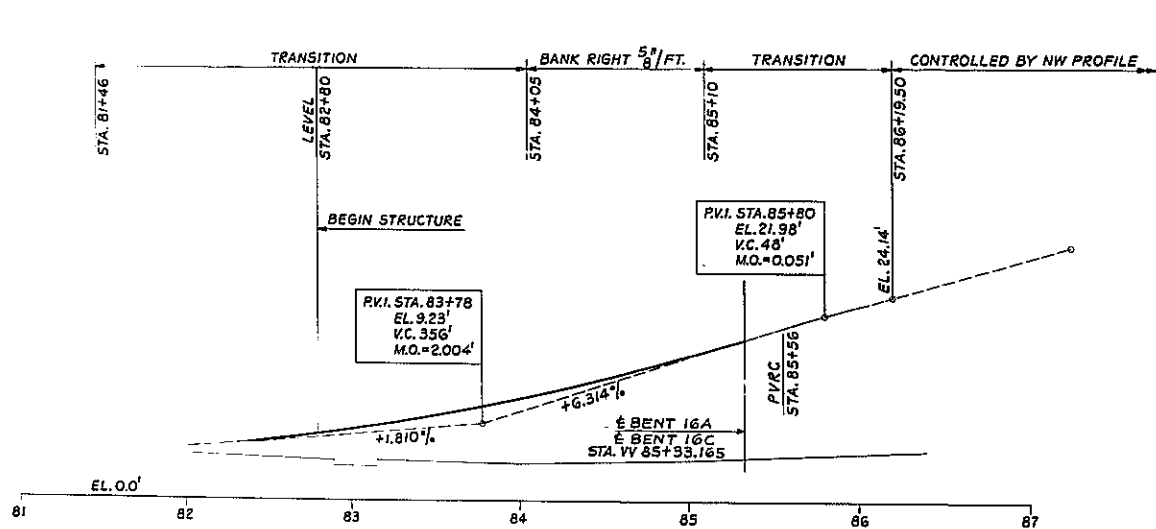
**NORTHERN BLVD.-EASTBOUND (NE)**

SCALE: HOR. 1"=100'  
VERT. 1"=20'



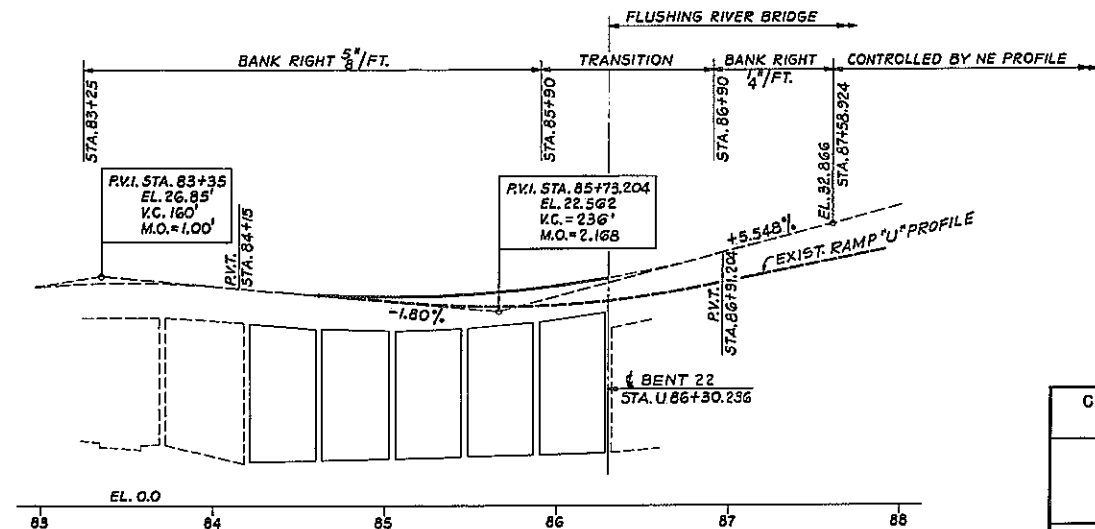
**NORTHERN BLVD.-WESTBOUND (NW)**

SCALE: HOR. 1"=100'  
VERT. 1"=20'



**STRUCTURE NO. 14 RAMP "VV"**

SCALE: HOR. 1"=50'  
VERT. 1"=10'



**STRUCTURE NO. 13 - RAMP "U"**

SCALE: HOR. 1"=50'  
VERT. 1"=10'

CITY OF NEW YORK - DEPARTMENT OF HIGHWAYS				
DIVISION OF DESIGN - BRIDGES				
<b>FLUSHING RIVER BRIDGE</b>				
NORTHERN BOULEVARD - BOROUGH OF QUEENS				
CONTRACT THX230B				
PROFILES				
N. H. BETTIGOLE CO. - CONSULTING ENGINEERS - NEW YORK				
DRAWER NO. 348	SCALE AS SHOWN	DATE 7-15-77	SHEET NO. 4	TOTAL SHEETS 10

DRAWN BY V.J.Y.  
DESIGNED BY A.J.R.  
CHECKED BY R.L.