

**MINNEAPOLIS HIGHWAY CONSTRUCTION FACTORS  
ATTACHMENT 7  
MNDOT WEEKLY CONSTRUCTION DIARIES  
BRIDGE 9340 COLLAPSE  
MINNEAPOLIS, MN.; 8/1/07  
HWY-07-MH024**

8-1-07

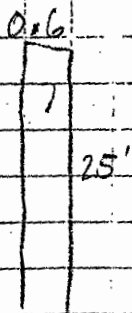
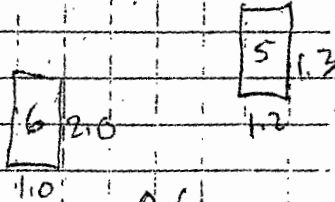
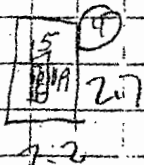
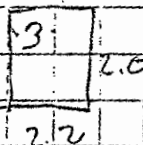
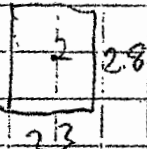
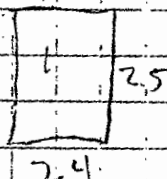
Summary BRIDGE 9340 SR 2+ LANES

NO. ABUT		TYPE 1	(TP3)	(T3F)
			TYPE 3 Partial	TYPE 3 FULL
0-100		41.34	-	0.95
100-200		68.6	-	-
200-300		483.21	2.4	68.45
300-400		104.16	-	-
400-500		167.73	-	91.44
500-600		224.54	33.83	26.22
600-700		151.57	11.75	1.95
700-800		171.25	7.29	-
800-900		90.08	-	-
900-1000		178.17	45.93	-
1000-1100		243.54	62.55	-
1100-1200		313.71	30.66	-
1200-1300		247.36	-	-
1300-1400		189.39	8.86	11.64
1400-1500		588.17	9.54	115.89
1500-1600		388.36	31.98	19.38
1600-1700		646.66	11.31	18.22
1700-1800		589.08	9.92	8.79
3UT. 1800-END		379.30	35.8	-
TOTAL		5266.22	301.82	362.93

Comp by H. C. Clark  
 CHECKED BY R. TRESSLER

NOTE: DRAWINGS ARE APPX. LOCATIONS  
 AND NOT TO SCALE -

SB Lt Lane 0'-100'



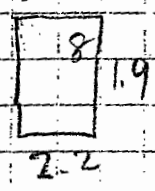
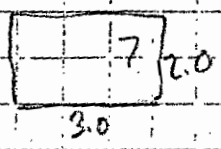
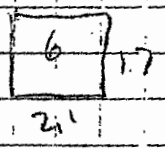
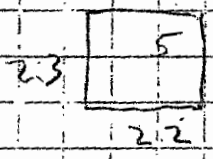
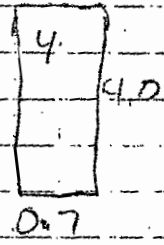
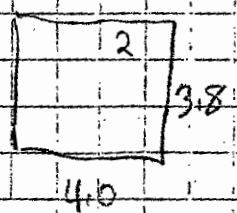
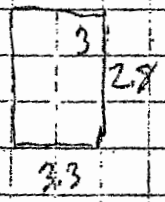
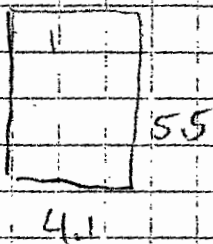
- 1  $2.5 \times 2.4 = 6.0$
- 2  $2.8 \times 2.3 = 6.44$
- 3  $2.0 \times 2.2 = 4.4$
- 4  $2.2 \times 2.7 = 5.94$
- 5  $1.3 \times 1.2 = 1.56$
- 6  $1.0 \times 2.0 = 2.0$
- 7  $0.6 \times 25 = 15.0$

TOTAL 41.34 (RT)

TPF  
 $4.15 \times 1.9 = 0.95$  (RT)

red/Comp'd By: R. Nubny date 7.31.7  
ed By: R. BRASSI & R.

SB LT. LANE ~~100' - 200'~~



Measured/Comp'd By: *D. M. Roberts* date \_\_\_\_\_  
Recorded By: RT 12955192 date 7-31-7

SB LT LANE 100'-200'

1  $4.1 \times 5.5 = 22.55$

2  $3.8 \times 4.0 = 15.2$

3  $2.8 \times 3.3 = 9.24$

4  $0.7 \times 4.0 = 2.8$

5  $2.2 \times 2.3 = 5.06$

6  $1.7 \times 2.1 = 3.57$

7  $2.0 \times 3.0 = 6.0$

8  $1.9 \times 2.2 = 4.18$

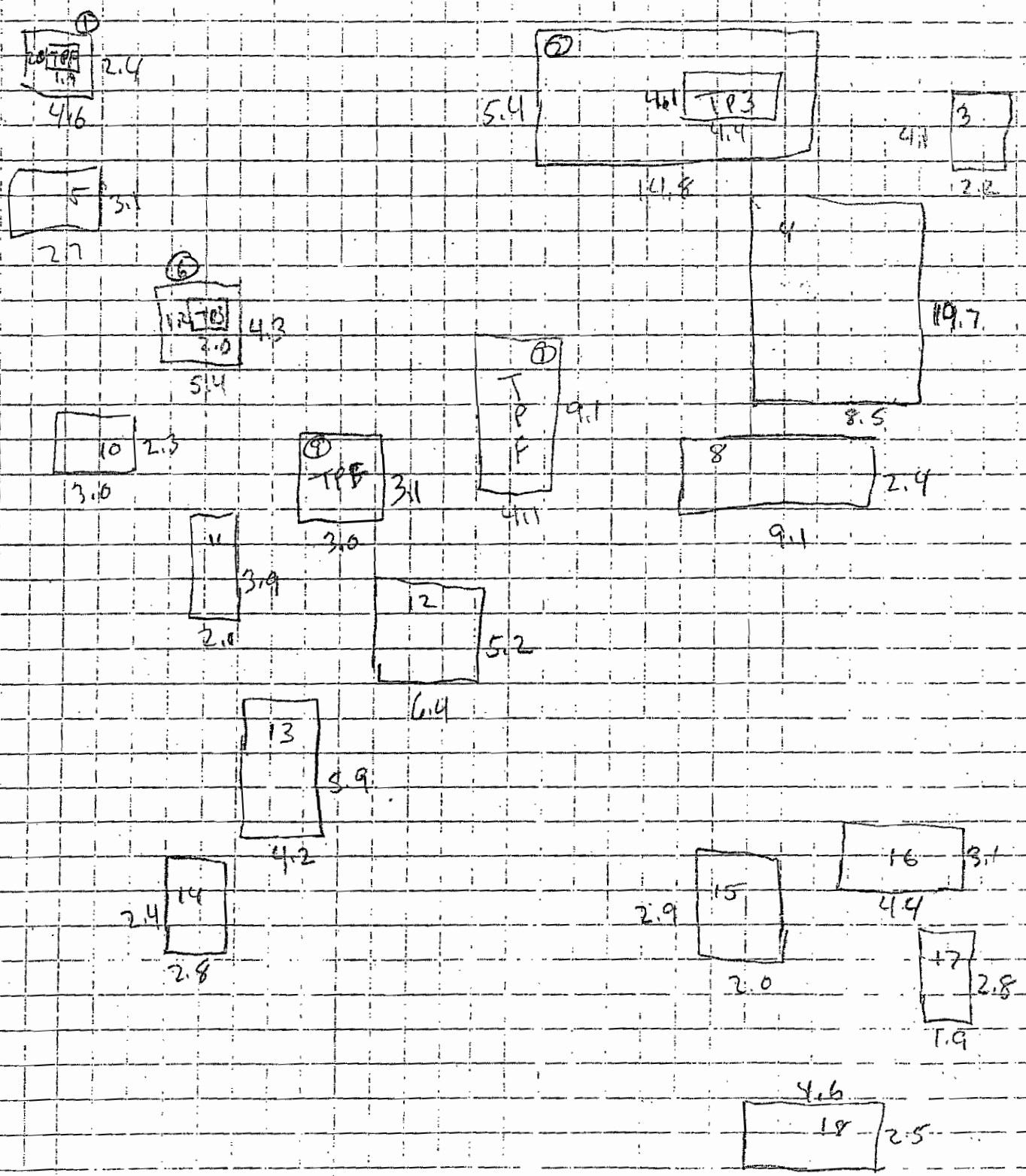
TOTAL 68.6

comp by RTR

✓ RTRESSLER 7.31.7

ITEM UNIT: SF

SB LT LANE 200-300



Measured/Comp'd By: R. [Signature] date \_\_\_\_\_  
Checked By: R. TRASSLER date 7-31-7

SB LT LANE 200'-300'

1  $2.4 \times 4.6 = 11.04$

10  $2.3 \times 3.0 = 6.9$

2  $5.4 \times 14.8 = 79.92$

11  $2.0 \times 3.9 = 7.8$

3  $4.1 \times 2.2 = 9.02$

12  $5.2 \times 6.4 = 33.28$

4  $8.5 \times 19.7 = 167.45$

13  $4.2 \times 5.9 = 24.78$

5  $3.1 \times 2.7 = 8.37$

14  $2.4 \times 2.8 = 6.72$

6  $4.3 \times 5.4 = 23.22$

15  $2.0 \times 2.9 = 5.8$

7  $4.1 \times 9.1 = 37.31$

16  $3.1 \times 4.4 = 13.64$

8  $2.4 \times 9.1 = 21.84$

17  $1.9 \times 2.8 = 5.32$

9  $3.0 \times 3.1 = 9.3$

18  $4.6 \times 2.5 = 11.5$

Total 367.47

Total 115.74

Total 483.21

TPF

TP3

1  $2.0 \times 1.9 = 3.8$

6  $1.2 \times 2.0 = 2.4$

2  $4.1 \times 4.4 = 18.04$

7  $4.1 \times 9.1 = 37.31$

9  $3.0 \times 3.1 = 9.3$

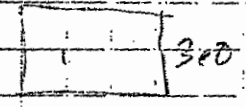
Total 68.45

comp. by RSR

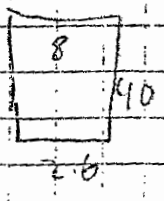
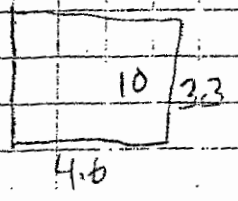
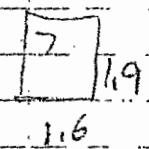
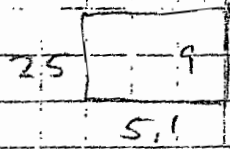
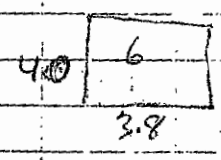
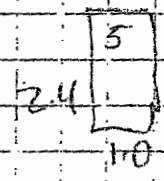
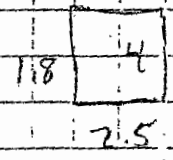
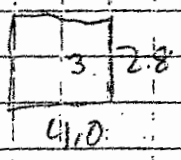
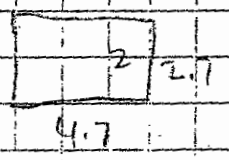
✓ RTRUSSLE 7.31.7

ITEM UNIT: SR

SB LT LANE 300-400'



5.6



Measured/Comp'd By: A. Parker date \_\_\_\_\_  
Checked By: TRASSLER date 7.31.7

?



SB LT LANE 300'-400'

1  $3.0 \times 5.6 = 16.8$

2  $2.7 \times 4.7 = 12.69$

3  $2.8 \times 4.0 = 11.2$

4  $1.8 \times 2.5 = 4.5$

5  $2.4 \times 1.0 = 2.4$

6  $4.0 \times 3.8 = 15.2$

7  $1.9 \times 1.6 = 3.04$

8  $4.0 \times 2.6 = 10.4$

9  $2.5 \times 5.1 = 12.75$

10  $3.3 \times 4.6 = 15.18$

Total 104.16

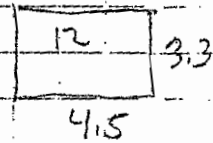
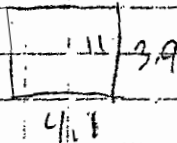
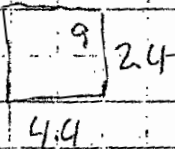
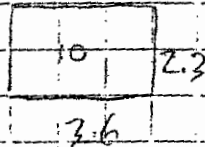
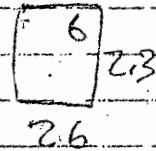
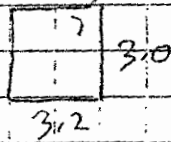
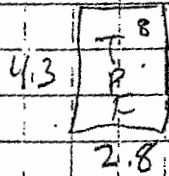
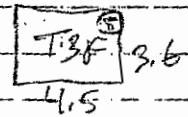
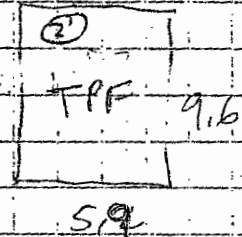
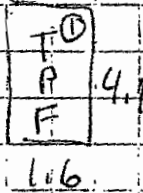
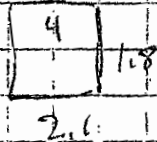
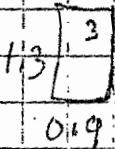
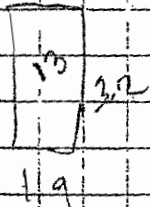
comp by RTR

JRTRESSLER 7-31-7

A

SF

SB LT LANE 400-500



Measured/Comp'd By: D. Ruby date \_\_\_\_\_  
 Checked By: RTR455L9R date 7.31.7

SB LT LANE 400-500'

1  $4.1 \times 1.6 = 6.56$

2  $5.9 \times 9.6 = 56.64$

3  $1.3 \times 0.9 = 1.17$

4  $1.8 \times 2.1 = 3.78$

5  $3.6 \times 4.5 = 16.2$

6  $2.3 \times 2.6 = 5.98$

7  $3.0 \times 3.2 = 9.6$

8  $4.3 \times 2.8 = 12.04$

9  $2.4 \times 4.4 = 10.56$

10  $2.3 \times 3.6 = 8.28$

11  $3.9 \times 4.1 = 15.99$

12  $3.3 \times 4.5 = 14.85$

13  $3.2 \times 1.9 = 6.08$

Total 167.73

TPF

1  $4.1 \times 1.6 = 6.56$

2  $9.6 \times 5.9 = 56.64$

5  $3.6 \times 4.5 = 16.2$

8  $4.3 \times 2.8 = 12.04$

Total 91.44

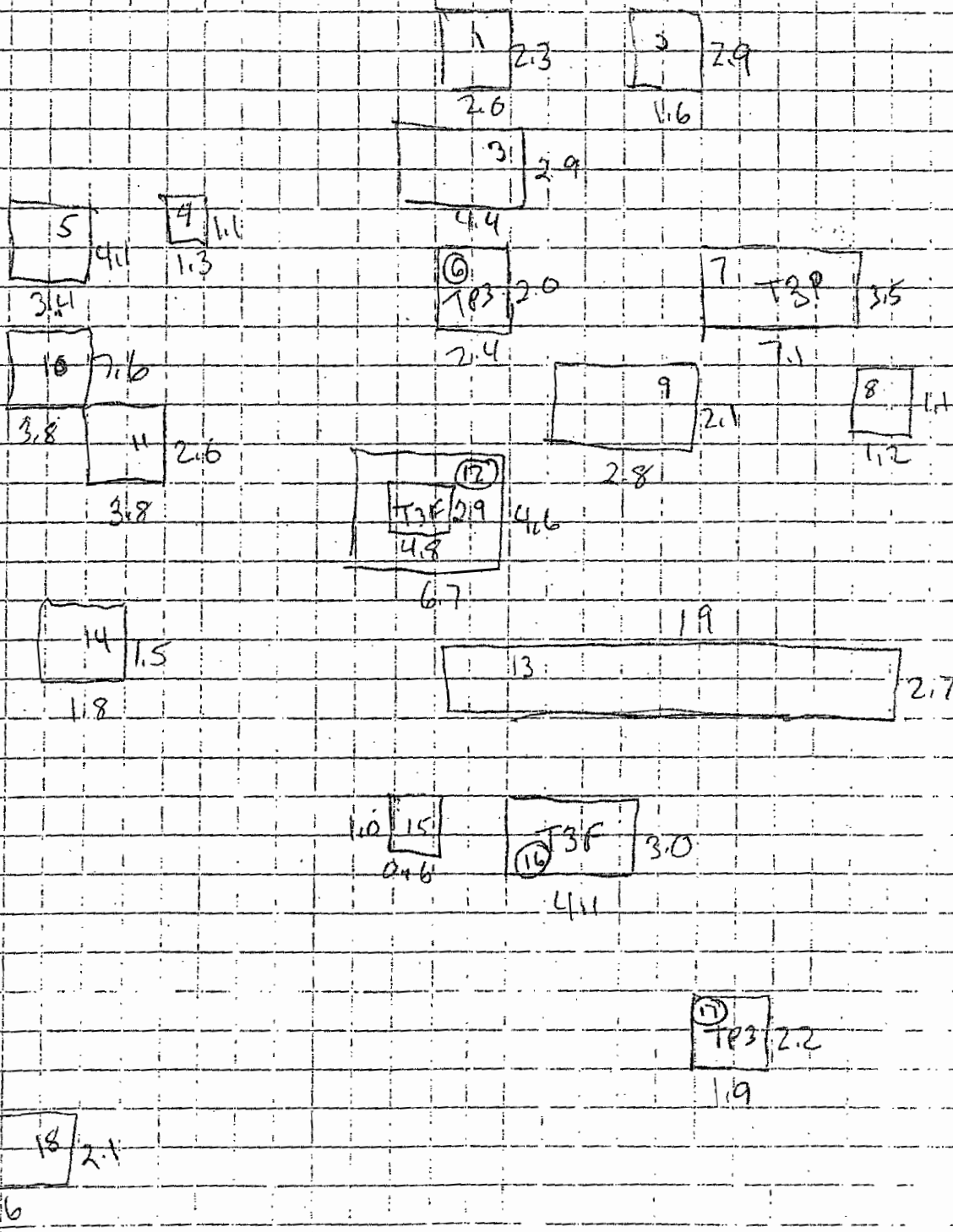
comp. by RJR

✓ RESSLER

7.31.7

ITEM UNIT: SR

SB, LT, LANE 500'-600'



Measured/Comp'd By: *[Signature]* date \_\_\_\_\_  
 Checked By: R. TRISSI, R. date 7-31-7

SB LT LANE 500'-600'

- |   |                          |    |                          |
|---|--------------------------|----|--------------------------|
| 1 | $2.3 \times 2.0 = 4.6$   | 10 | $7.6 \times 3.8 = 28.88$ |
| 2 | $2.9 \times 1.6 = 4.64$  | 11 | $2.6 \times 3.8 = 9.88$  |
| 3 | $2.9 \times 4.4 = 12.76$ | 12 | $4.6 \times 6.7 = 30.82$ |
| 4 | $1.1 \times 1.3 = 1.43$  | 13 | $19.0 \times 2.7 = 51.3$ |
| 5 | $4.1 \times 3.4 = 13.94$ | 14 | $1.5 \times 1.8 = 2.7$   |
| 6 | $2.0 \times 2.4 = 4.8$   | 15 | $1.0 \times 0.6 = 0.6$   |
| 7 | $3.5 \times 7.1 = 24.85$ | 16 | $3.0 \times 4.1 = 12.3$  |
| 8 | $1.1 \times 1.2 = 1.32$  | 17 | $2.2 \times 1.9 = 4.18$  |
| 9 | $2.1 \times 2.8 = 5.88$  | 18 | $2.1 \times 4.6 = 9.66$  |

Total 74.22

Total 150.32

Total 224.54

TP3

T3F

- |    |                          |    |                          |
|----|--------------------------|----|--------------------------|
| 6  | $2.0 \times 2.4 = 4.8$   | 12 | $2.9 \times 4.8 = 13.92$ |
| 7  | $3.5 \times 7.1 = 24.85$ | 16 | $3.0 \times 4.1 = 12.3$  |
| 17 | $2.2 \times 1.9 = 4.18$  |    |                          |

Total 33.83

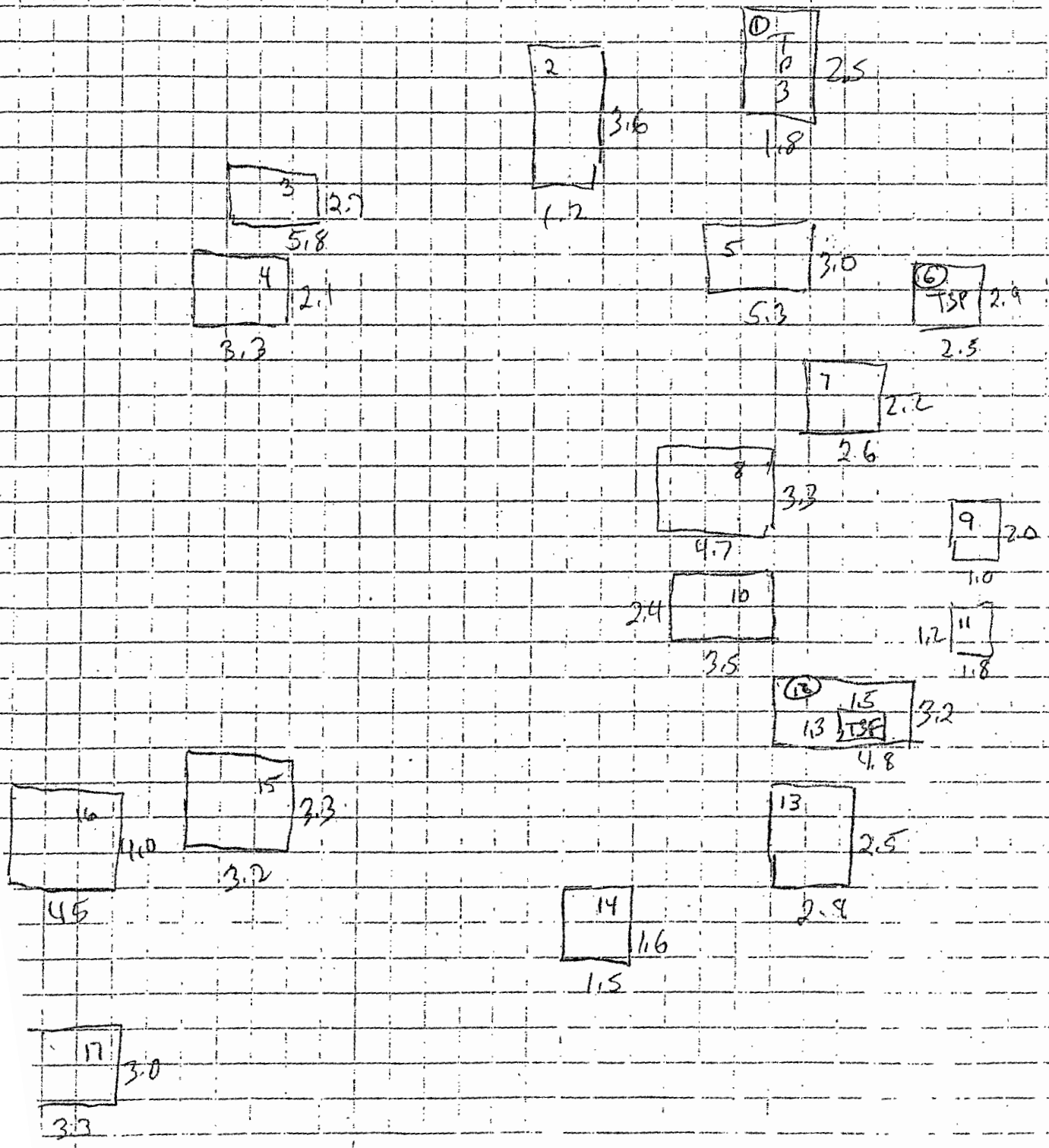
Total 26.22

comp by RJR

✓ R. TRESLER 7-31-7

... 045 2.505  
ITEM UNIT: SF

SB LT. LANE 600-700



ed/Comp'd By: R. Turkey date \_\_\_\_\_  
d By: R. TASSLER date 7.31.7

SB LT LANE 600'-700

1  $1.8 \times 2.5 = 4.5$

10  $2.4 \times 3.5 = 8.4$

2  $1.2 \times 3.6 = 4.32$

11  $1.2 \times 1.8 = 2.16$

3  $2.7 \times 5.8 = 15.66$

12  $3.2 \times 4.8 = 15.36$

4  $2.1 \times 3.3 = 6.93$

13  $2.5 \times 2.8 = 7.0$

5  $3.0 \times 5.3 = 15.9$

14  $1.6 \times 1.5 = 2.4$

6  $2.9 \times 2.5 = 7.25$

15  $3.3 \times 3.2 = 10.56$

7  $2.2 \times 2.6 = 5.72$

16  $4.0 \times 4.5 = 18.0$

8  $3.3 \times 4.7 = 15.51$

17  $3.0 \times 3.3 = 9.9$

9  $2.0 \times 1.0 = 2.0$

TOTAL 77.79

TOTAL ~~69.46~~ <sup>73.78 RT</sup>

TOTAL ~~81.25~~ <sup>RT</sup> 151.57

T3F

12  $1.3 \times 1.5 = 1.95$

T P3

1  $1.8 \times 2.5 = 4.5$

6  $2.9 \times 2.5 = 7.25$

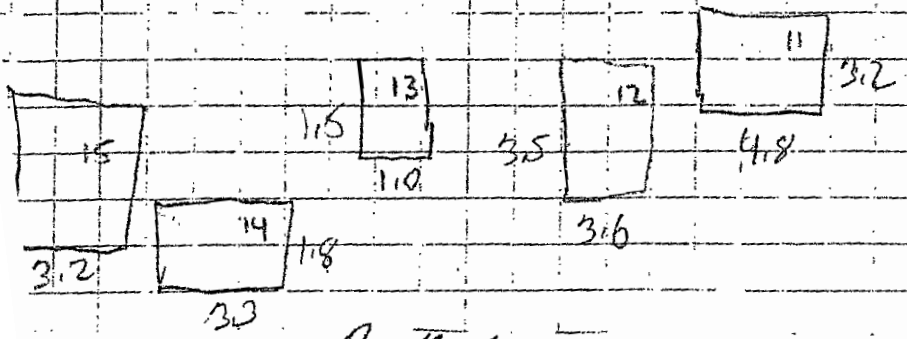
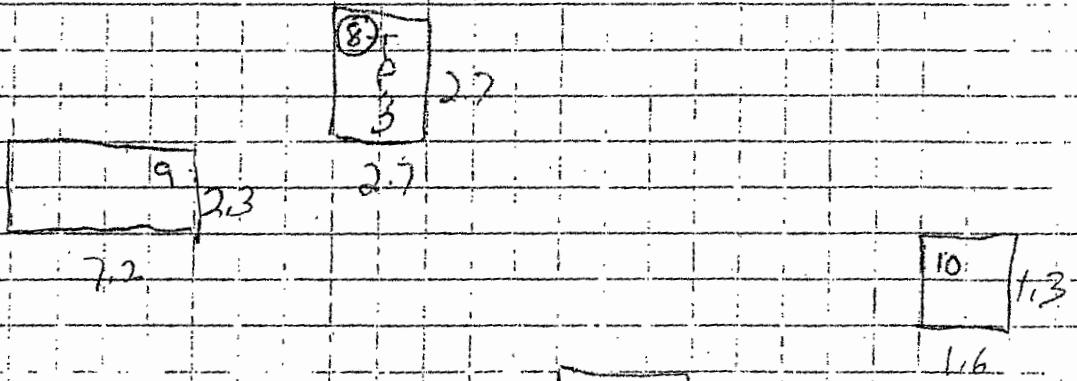
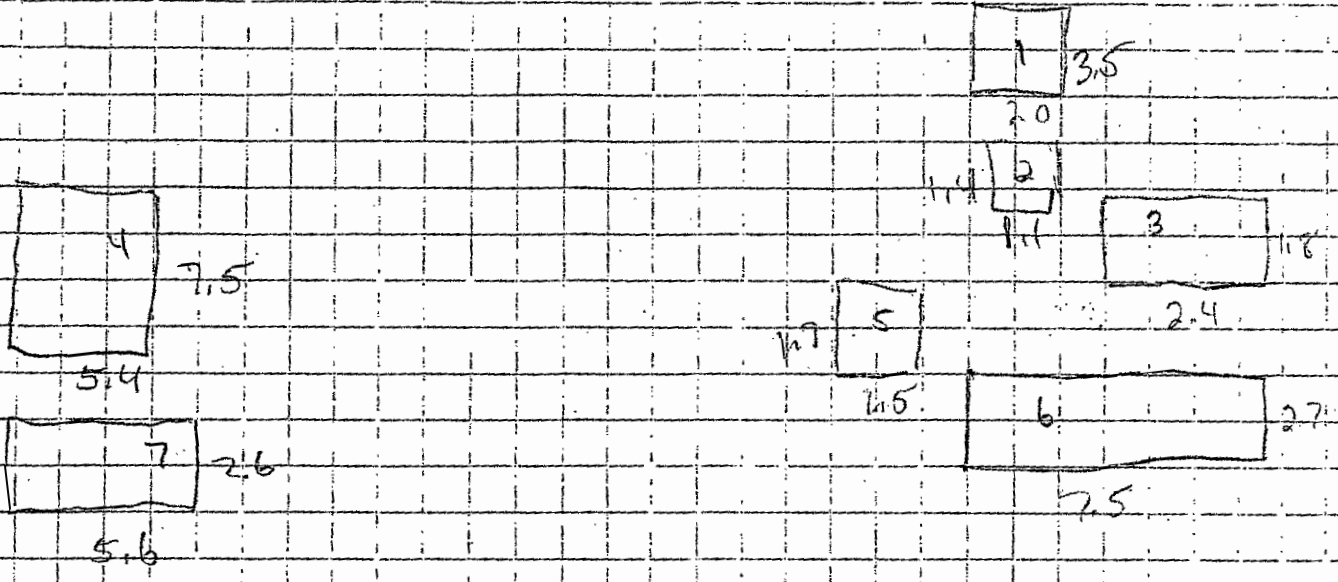
TOTAL 11.75

Comp. by RJR

✓ ATRESSLER T.31.7

ITEM UNIT: SF

SB LT LANE 700-800



Measured/Comp'd By: A. Turkey date \_\_\_\_\_  
 Checked By: RET, SSI, RR date 7-31-7



SB LT LANE 700'-800'

- 1  $2.0 \times 3.5 = 7.0$
- 2  $1.4 \times 1.1 = 1.54$
- 3  $1.8 \times 2.4 = 4.32$
- 4  $7.5 \times 5.4 = 40.5$
- 5  $1.7 \times 1.5 = 2.55$
- 6  $2.7 \times 7.5 = 20.25$
- 7  $2.6 \times 5.6 = 14.56$
- 8  $2.7 \times 2.7 = 7.29$
- 9  $2.3 \times 7.2 = 16.56$
- 10  $1.3 \times 1.6 = 2.08$
- 11  $3.2 \times 4.8 = 15.36$
- 12  $3.5 \times 3.6 = 12.6$
- 13  $1.5 \times 1.0 = 1.5$
- 14  $1.8 \times 3.3 = 5.94$
- 15  $6.0 \times 3.2 = 19.2$

TOTAL 171.25

comp by R3R

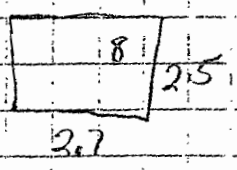
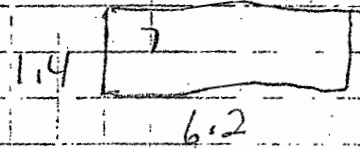
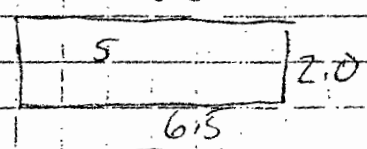
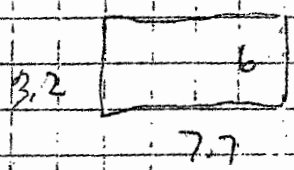
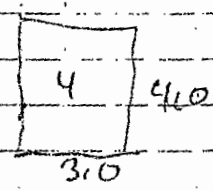
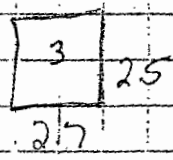
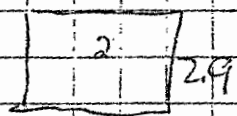
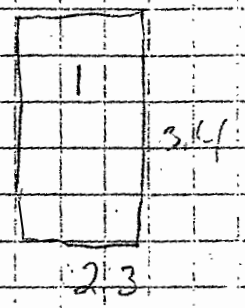
✓ RTRESSLER 7.31.7

TP 3

- 8  $2.7 \times 2.7 = 7.29$

SF

SB LT LANE 800-900



Designed/Comp'd By: R. Thayer date \_\_\_\_\_  
 Drawn By: R. PRESSLER date 7.31.7

SB LT LANE 800'-900'

1  $3.4 \times 2.3 = 7.82$

2  $2.9 \times 3.6 = 10.44$

3  $2.5 \times 2.7 = 6.75$

4  $4.0 \times 3.0 = 12.0$

5  $2.0 \times 6.5 = 13.0$

6  $3.2 \times 7.7 = 24.64$

7  $1.4 \times 6.2 = 8.68$

8  $2.5 \times 2.7 = 6.75$

Total 90.08

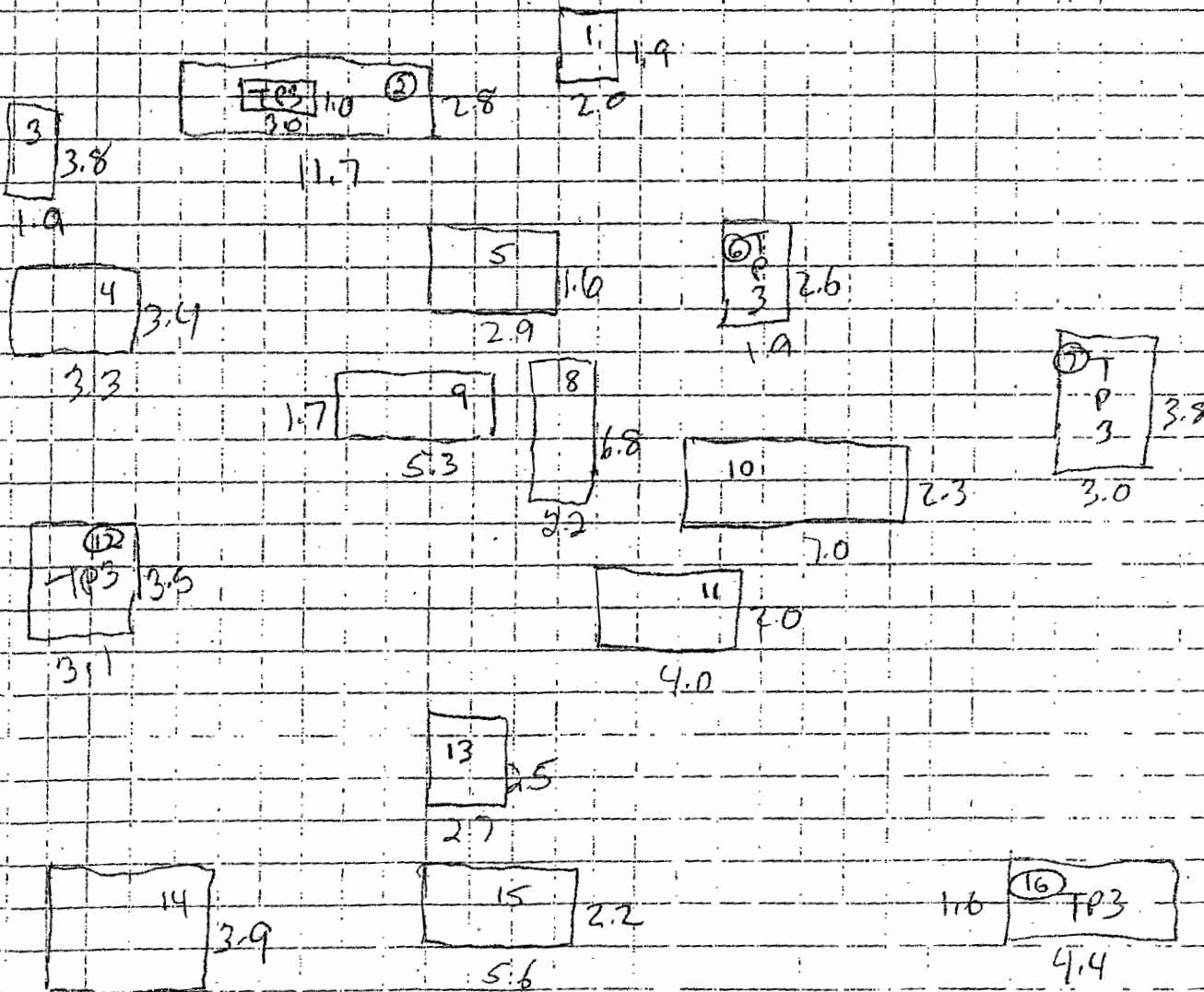
comply RIR

✓ RTRESSLER 7.31.87

ITEM UNIT: SP

SB LT LANE

900-1000



Measured/Comp'd By: A. Nuber date \_\_\_\_\_  
Checked By: R. TRASSLER date 7.31.7

SB LT LANE 900'-1000'

1	$1.9 \times 2.0 = 3.8$	9	$1.7 \times 5.3 = 9.01$
2	$2.8 \times 11.7 = 32.76$	10	$2.3 \times 7.0 = 16.1$
3	$1.9 \times 3.8 = 7.22$	11	$2.0 \times 4.0 = 8.0$
4	$3.4 \times 3.3 = 11.22$	12	$3.5 \times 3.1 = 10.85$
5	$1.6 \times 2.9 = 4.64$	13	$2.5 \times 2.7 = 6.75$
6	$1.9 \times 2.6 = 4.94$	14	$3.9 \times 4.4 = 17.16$
7	$3.0 \times 3.8 = 11.4$	15	$2.2 \times 5.6 = 12.32$
8	$2.2 \times 6.8 = 14.96$	16	$1.6 \times 4.4 = 7.04$

Total 90.94

Total 87.23

Total ~~87.23~~ <sup>(RT)</sup> 178.17

TP 3

comp by: RSR

2	$1.0 \times 11.7 = 11.7$
6	$2.6 \times 1.9 = 4.94$
7	$3.0 \times 3.8 = 11.4$
12	$3.5 \times 3.1 = 10.85$
16	$1.6 \times 4.4 = 7.04$

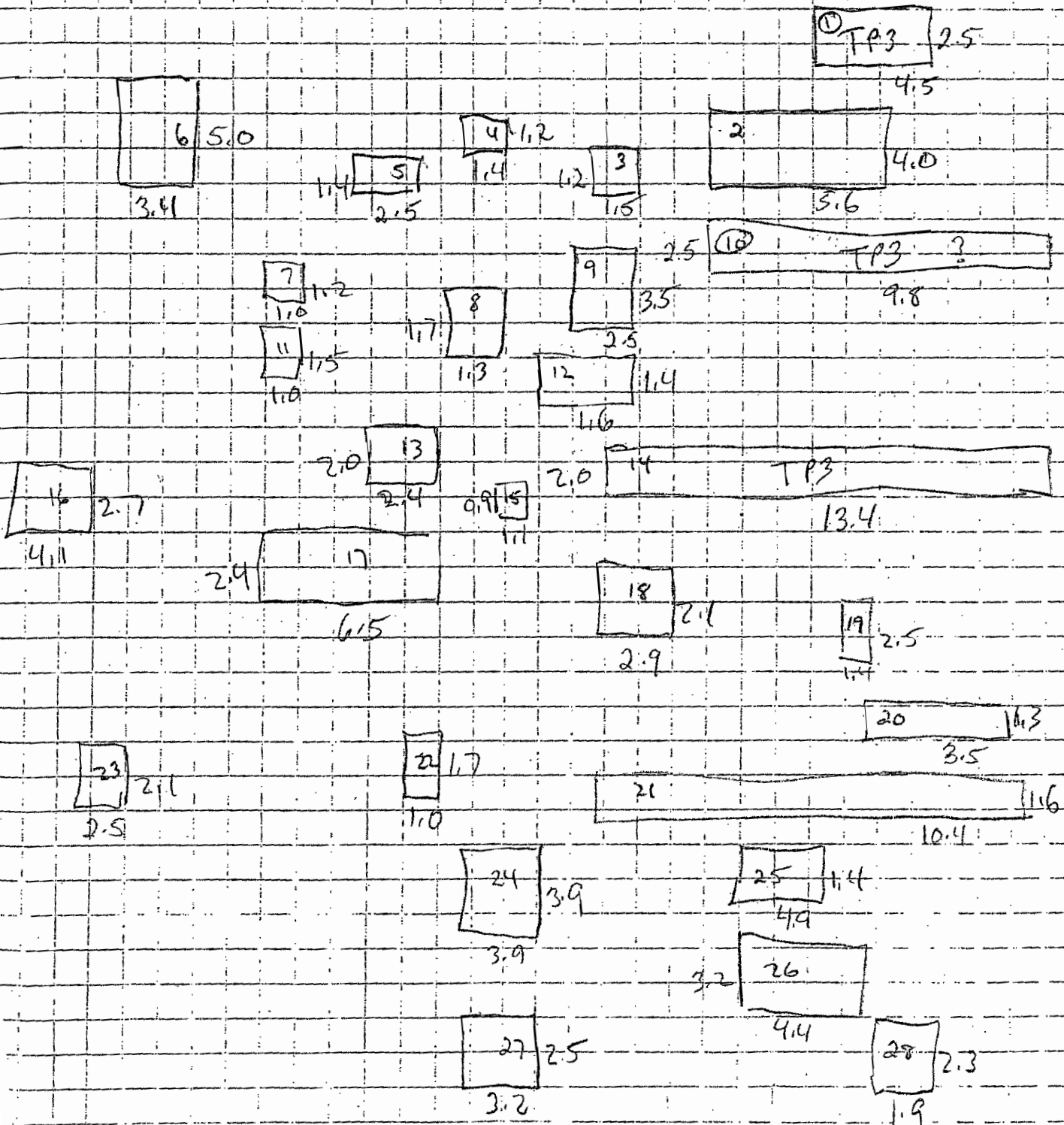
JKRASSLER 7.31.7

Total 45.93

UNIT: SE

SB LT LANE

1000-1100



Measured/Comp'd By: R. Shukry date \_\_\_\_\_  
Checked By: P. T. G. S. S. R. date 7.31.7

SB LT LANE 1000-1100

- 1 2.5 x 4.5 = 11.25
- 2 4.0 x 5.6 = 22.4
- 3 1.2 x 1.5 = 1.8
- 4 1.2 x 1.4 = 1.68
- 5 1.4 x 2.5 = 3.5
- 6 3.4 x 5.0 = 17.0
- 7 1.0 x 1.2 = 1.2
- 8 1.3 x 1.7 = 2.21
- 9 2.5 x 3.5 = 8.75
- 10 2.5 x 9.8 = 24.5
- 11 1.5 x 1.0 = 1.5
- 12 1.4 x 1.6 = 2.24
- 13 2.0 x 2.4 = 4.8
- 14 2.0 x 13.4 = 26.8

- 15 0.9 x 1.1 = 0.99
- 16 2.7 x 4.1 = 11.07
- 17 2.4 x 6.5 = 15.6
- 18 2.1 x 2.9 = 6.09
- 19 1.4 x 2.5 = 3.5
- 20 1.3 x 3.5 = 4.55
- 21 1.6 x 10.4 = 16.64
- 22 1.7 x 1.0 = 1.7
- 23 2.1 x 2.5 = 5.25
- 24 3.9 x 3.9 = 15.21
- 25 1.4 x 4.9 = 6.86
- 26 3.2 x 4.4 = 14.08
- 27 2.5 x 3.2 = 8.0
- 28 1.9 x 2.3 = 4.37

Total 129.63

Total 113.91

Total 243.54

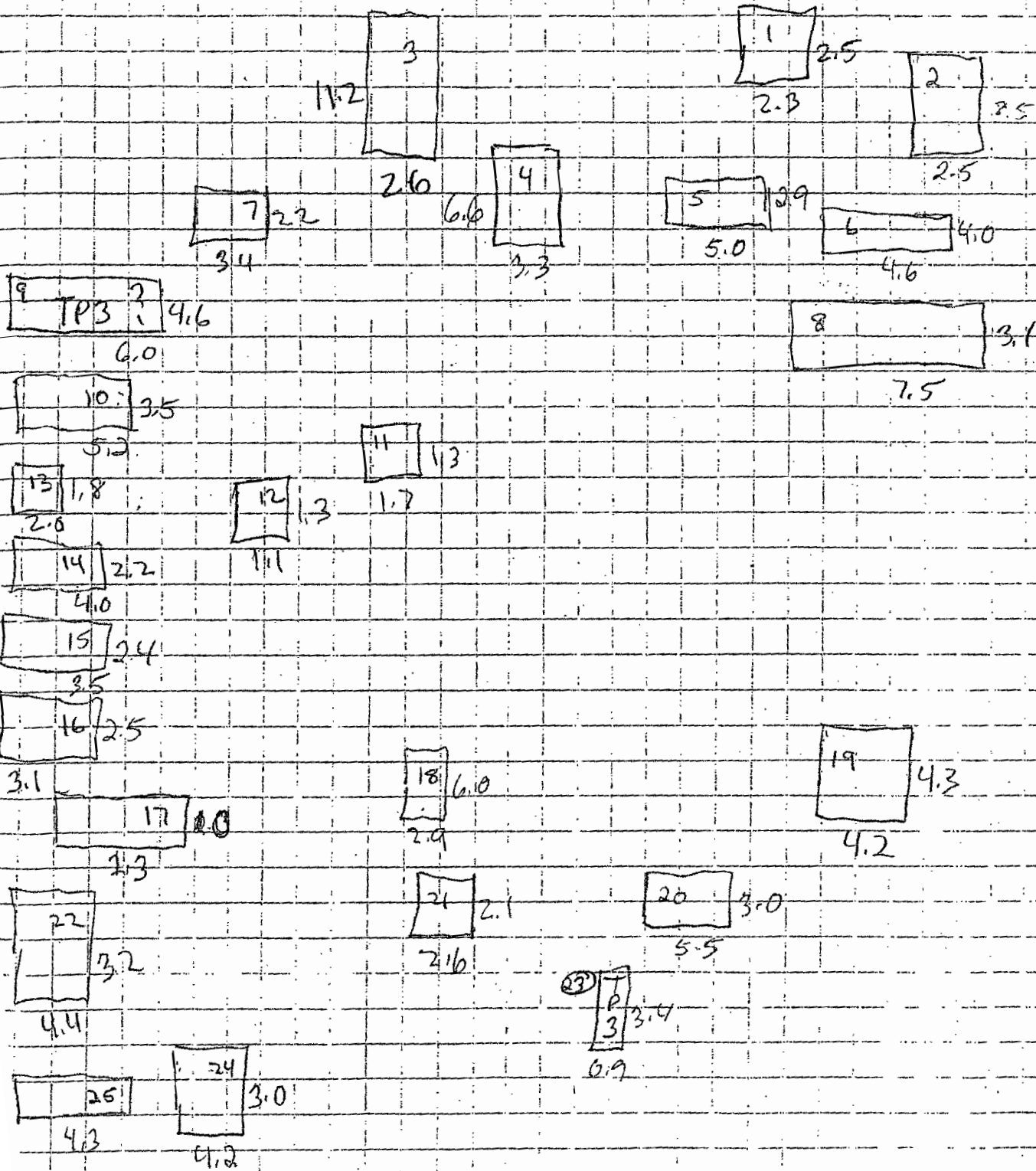
comp by R3R

✓ R. TRAUSSLER 7-31-7

TP3

- 1 2.5 x 4.5 = 11.25
- 10 2.5 x 9.8 = 24.5
- 14 2.0 x 13.4 = 26.8

Total 62.55



Measured/Comp'd By: R. Tubing      date \_\_\_\_\_  
 Checked By: RTRESSLER              date 7-31-7



SB LT LANE 1100-1200

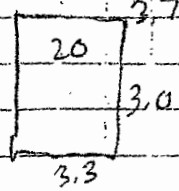
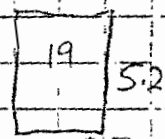
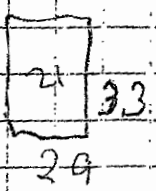
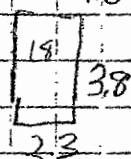
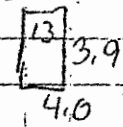
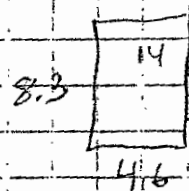
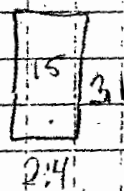
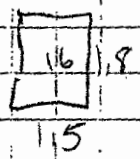
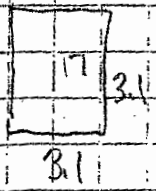
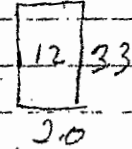
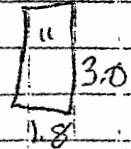
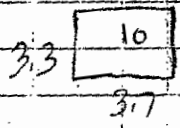
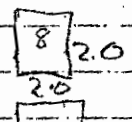
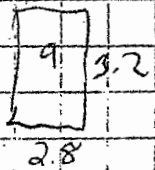
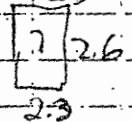
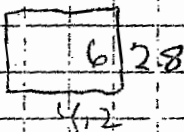
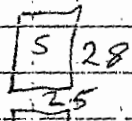
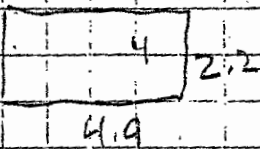
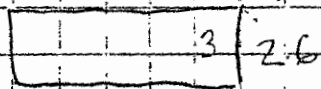
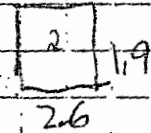
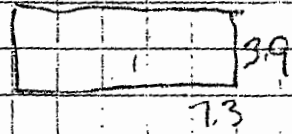
1	$2.5 \times 2.3 = 5.75$	14	$2.2 \times 4.0 = 8.8$
2	$8.5 \times 2.5 = 21.25$	15	$2.4 \times 3.5 = 8.4$
3	$11.2 \times 2.6 = 29.12$	16	$2.5 \times 3.1 = 7.75$
4	$6.6 \times 3.3 = 21.78$	17	$1.0 \times 2.3 = 2.3$
5	$2.9 \times 5.0 = 14.5$	18	$6.0 \times 2.9 = 17.4$
6	$4.0 \times 4.6 = 18.4$	19	$4.3 \times 4.2 = 18.06$
7	$2.2 \times 3.4 = 7.48$	20	$3.0 \times 5.5 = 16.5$
8	$3.1 \times 7.5 = 23.25$	21	$2.1 \times 2.6 = 5.46$
9	$4.6 \times 6.0 = 27.6$	22	$3.2 \times 4.4 = 14.08$
10	$3.5 \times 5.2 = 18.2$	23	$0.9 \times 3.4 = 3.06$
11	$1.3 \times 1.7 = 2.21$	24	$3.0 \times 4.2 = 12.6$
12	$1.1 \times 1.3 = 1.43$	25	$1.1 \times 4.3 = 4.73$
13	$1.8 \times 2.0 = 3.6$		
	Total 194.57		Total 119.14
	Total 313.71		

TP3

comply RSR

9	$4.6 \times 6.0 = 27.6$	✓ BY R. TRESSLER
23	$0.9 \times 3.4 = 3.06$	7-31-7
	Total 30.66	

SB LT. LANE 1200-1300



red/Comp'd By: A. Tubby date \_\_\_\_\_  
ad By: R. TRUSSIER date 7.31.7

SB LT LANE 1200-130.

1	$3.9 \times 7.3 = 28.47$	12	$3.3 \times 2.0 = 6.6$
2	$1.9 \times 2.6 = 4.94$	13	$3.9 \times 4.0 = 15.6$
3	$2.6 \times 7.8 = 20.28$	14	$4.6 \times 8.3 = 38.18$
4	$2.2 \times 4.9 = 6.16 10.78$ (R)	15	$2.4 \times 3.1 = 7.44$
5	$2.5 \times 2.8 = 7.0$	16	$1.8 \times 1.5 = 2.7$
6	$2.8 \times 4.2 = 11.76$	17	$3.1 \times 3.1 = 9.61$
7	$2.6 \times 2.3 = 5.98$	18	$2.3 \times 3.8 = 8.74$
8	$2.0 \times 2.0 = 4.0$	19	$3.7 \times 5.2 = 19.24$
9	$3.2 \times 2.8 = 8.96$	20	$3.0 \times 3.3 = 9.9$
10	$3.3 \times 3.7 = 12.21$	21	$2.9 \times 3.3 = 9.57$
11	$1.8 \times 3.0 = 5.4$		

Total 115.16

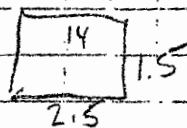
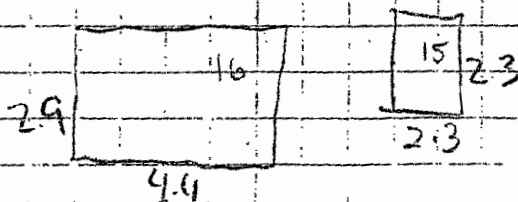
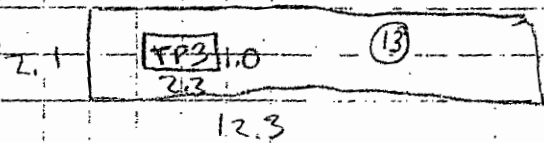
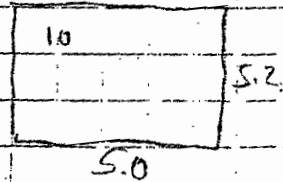
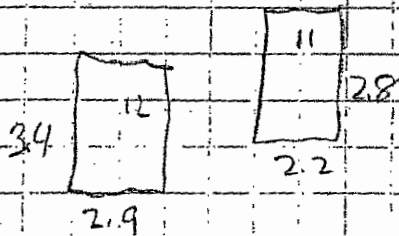
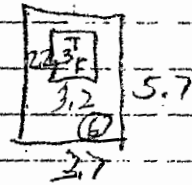
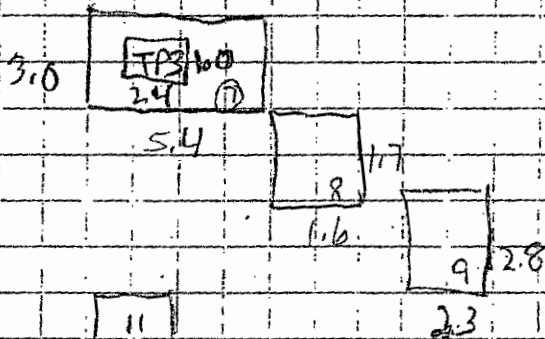
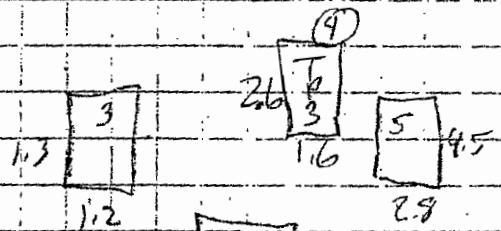
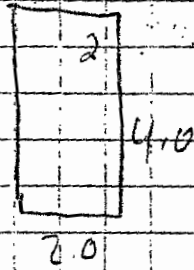
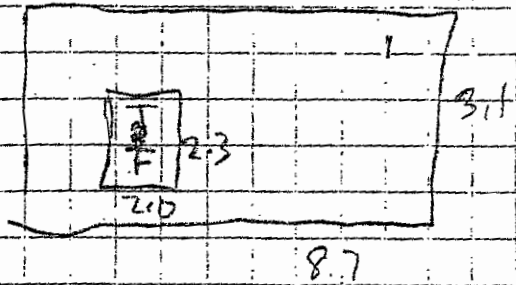
Total 127.58

Total ~~242.74~~ 247.36 RT

comp by RSN

✓ BY R. TRUSSLER 7.31.7

SB. LT. LANE 1300-1400



Measured/Comp'd By: R. Rubin date \_\_\_\_\_  
Checked By: ATRESSLER date 4.6.7

SB LT LANE 1300' - 1400'

1.  $3.1 \times 8.7 = 26.97$
2.  $2.0 \times 4.0 = 8.0$
3.  $1.3 \times 1.2 = 1.56$
4.  $1.6 \times 2.6 = 4.16$
5.  $2.8 \times 4.5 = 12.6$
6.  $3.7 \times 5.7 = 21.09$
7.  $3.0 \times 5.4 = 16.2$
8.  $1.6 \times 1.7 = 2.72$
9.  $2.3 \times 2.8 = 6.44$
10.  $5.0 \times 5.2 = 26.0$
11.  $2.2 \times 2.8 = 6.16$
12.  $2.9 \times 3.4 = 9.86$
13.  $2.1 \times 12.3 = 25.83$
14.  $1.5 \times 2.5 = 3.75$
15.  $2.3 \times 2.3 = 5.29$
16.  $2.9 \times 4.4 = 12.76$

To Tal. 189.39 (RT)

TP3

4.  $2.6 \times 1.6 = 4.16$
7.  $1.0 \times 2.4 = 2.4$
13.  $1.0 \times 2.3 = 2.3$

Total 8.86 (RT)

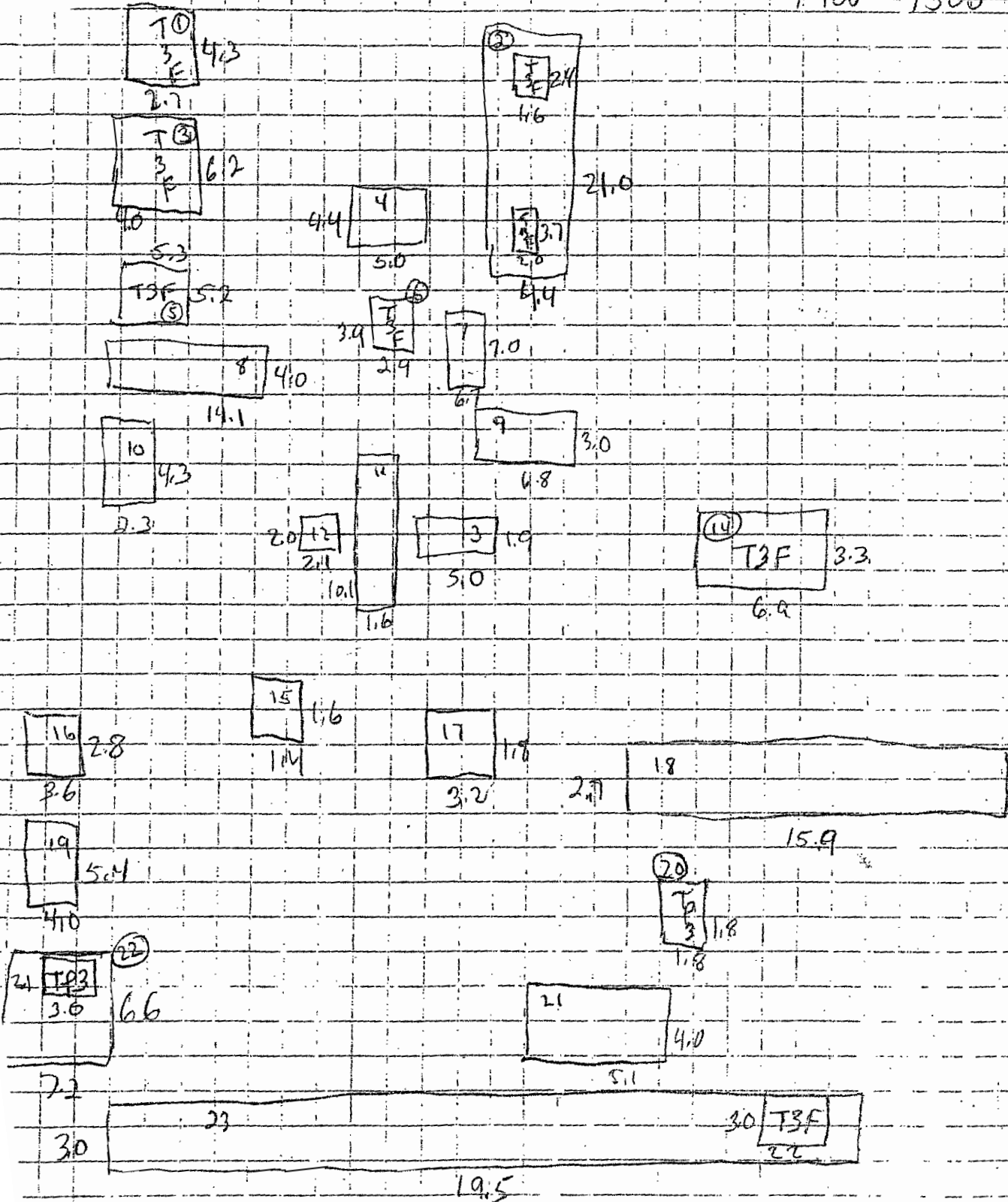
T3F

1.  $2.3 \times 2.0 = 4.6$
6.  $2.2 \times 3.2 = 7.04$

To Tal 11.64 (RT)

compley R5R

1400 - 1500



red/Comp'd By: A. Stuber      date \_\_\_\_\_  
 ed By: RTRSSLSA                      date 8.6.7

SB LT LANE 1400' 1500'

1	$2.7 \times 4.3 = 11.61$	13	$1.9 \times 5.0 = 9.5$
2	$4.4 \times 21.0 = 92.4$	14	$3.3 \times 6.9 = 22.77$
3	$4.0 \times 6.2 = 24.8$	15	$1.4 \times 1.6 = 2.24$
4	$4.4 \times 5.0 = 22.0$	16	$3.6 \times 2.8 = 10.08$
5	$5.2 \times 5.3 = 27.56$	17	$1.8 \times 3.2 = 5.76$
6	$2.9 \times 3.9 = 11.31$	18	$2.7 \times 15.9 = 42.93$
7	$6.7 \times 7.0 = 46.9$	19	$4.0 \times 5.4 = 21.6$
8	$4.0 \times 14.1 = 56.4$	20	$1.8 \times 1.8 = 3.24$
9	$3.0 \times 6.8 = 20.4$	21	$4.0 \times 5.1 = 20.4$
10	$2.3 \times 4.3 = 9.89$	22	$4.6 \times 7.2 = 47.52$
11	$1.6 \times 10.1 = 16.16$	23	$3.0 \times 19.5 = 58.5$
12	$2.0 \times 2.1 = 4.2$		

Total 343.63<sup>(RT)</sup>

Total 244.54<sup>(RT)</sup>

Total 588.17<sup>(RT)</sup>

TP 3

T3F

20	$1.8 \times 1.8 = 3.24$
22	$2.1 \times 3.0 = 6.3$
	Total 9.54 <sup>(RT)</sup>

1	$2.7 \times 4.3 = 11.61$
2	$1.6 \times 2.4 = 3.84$
2	$2.0 \times 3.7 = 7.4$
3	$4.0 \times 6.2 = 24.8$
5	$5.3 \times 5.2 = 27.56$
6	$2.9 \times 3.9 = 11.31$
14	$3.3 \times 6.9 = 22.77$
23	$2.2 \times 3.0 = 6.6$

Total 115.89<sup>(RT)</sup>

compley RIR