

**HIGHWAY FACTORS FACTUAL REPORT  
MIAMI, OK.;6/26/2009  
HWY-09-MH-015  
FATAL TRUCK ACCIDENT  
ATTACHMENT D  
HIGHWAY PLANS  
(9) PAGES**

OKLAHOMA TURNPIKE AUTHORITY				
DE LEUW, CATHEN & CO., CONSULTING ENGINEER				
SECTION NUMBER	SECTION	CONTRACT NUMBER	SHEET NUMBER	TOTAL SHEETS
FELL & WHEELER	16	152	7	20

# OKLAHOMA TURNPIKE AUTHORITY

## NORTHEASTERN TURNPIKE

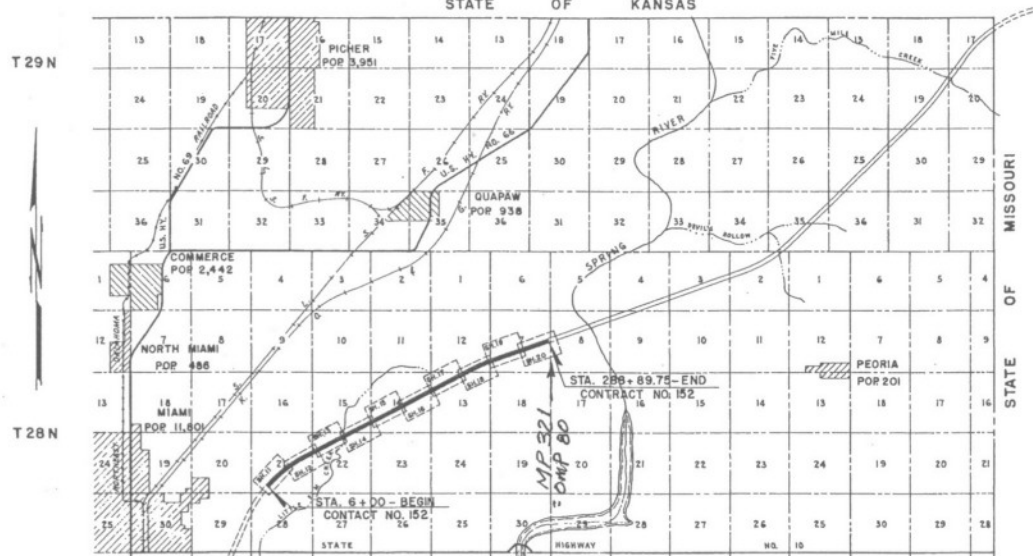
SECTION I-G

PAVING

CONTRACT NO. 152

AS BUILT

R 23 E STATE OF KANSAS R 24 E R 25 E



INDEX OF SHEETS

SHEET NO. 1 TITLE SHEET

- 2 TYPICAL PAVING SECTIONS PS-1
- 3 CONTRACTION AND EXPANSION JOINTS PS-6
- 4 PAVING DETAILS PS-7
- 5 MISCELLANEOUS DETAILS PS-5
- 6 DELINEATORS, DETAIL AND ASSEMBLY PS-2
- 7 PAVEMENT MARKING PS-3
- 8 STD. METAL PLATE GUARD RAIL AND GUIDE POSTS PS-4
- 9 SUMMARY SHEET
- 10 SUMMARY OF PAY QUANTITIES
- 11-20 PLAN AND PROFILE SHEETS

### SCALES

PLAN 1"=100'  
 PROFILE HOR. 1"=100'  
 VER. 1"=10'  
 CROSS SECTIONS 1"=10'  
 LAYOUT MAP 1"=5000'

U.S.C. & G.S. LEVEL DATUM  
 BEARINGS FROM OBSERVATION ON POLARIS

### CONVENTIONAL SIGNS

- PROPOSED ROAD
- RAILROADS
- RANGE & TOWNSHIP LINES
- SECTION LINES
- QUARTER SECTION LINES
- FENCES
- TURNPIKE CENTER LINE
- RIGHT-OF-WAY LINES
- GROUND LINES
- GRADE LINE
- TRAVELLED ROADS
- CULVERTS & BRIDGES
- TELEPHONE & TELEGRAPH
- POWER LINES
- BUILDINGS
- UNLOADING POINTS
- OIL WELLS
- RIGHT OF WAY MARKERS

ROADWAY LENGTH ----- 28,307.75 FT. = 5.361 MILES

EXCEPTIONS: NONE  
 EQUATION: STA. 153+60.0 BACK =  
 STA. 153+42.0 AHEAD.

SPECIAL PROVISIONS GOVERN AND OKLAHOMA TURNPIKE AUTHORITY  
 STANDARD SPECIFICATIONS GOVERN, EDITION OF JULY, 1955

SUBMITTED BY: FELL & WHEELER

BY: *William F. Fell*  
 OKLAHOMA REGISTERED PROFESSIONAL ENGINEER NO. 802



DATE 11-4-55

RECOMMENDED BY: DE LEUW, CATHEN & COMPANY

BY: *J.C.F.*

DATE 12/3/55

APPROVED BY: *W.D. Hubard*  
 FOR THE OKLAHOMA TURNPIKE AUTHORITY

DATE 12-2-55

OKLAHOMA TURNPIKE AUTHORITY				
DE LEUW, CATHER & CO., CONSULTING ENGINEER				
SECTION CHIEF	ACTION	CONTRACT NUMBER	SHEET NUMBER	TOTAL SHEETS
FELL & WHEELER	16	162	1	19

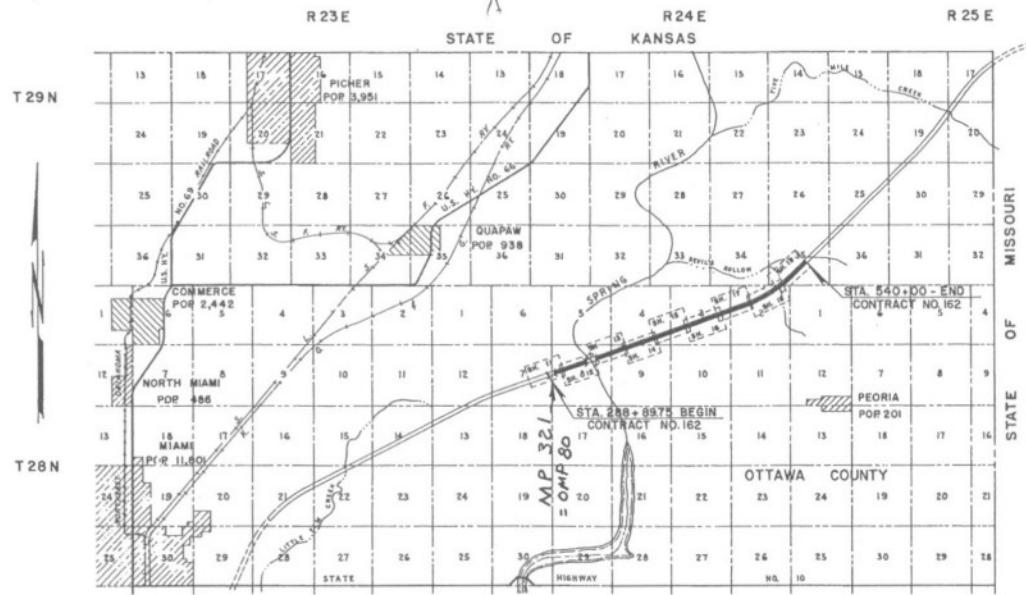
OKLAHOMA TURNPIKE AUTHORITY

NORTHEASTERN TURNPIKE

SECTION I-G  
PAVING  
CONTRACT NO. 162

INDEX OF SHEETS

SHEET NO. 1	TITLE SHEET
2	TYPICAL PAVING SECTIONS PS-1
3	CONTRACTION AND EXPANSION JOINTS PS-6
4	PAVING DETAILS PS-7
5	MISCELLANEOUS DETAILS PS-5
6	DELINEATORS, DETAIL AND ASSEMBLY PS-2
7	PAVEMENT MARKING PS-3
8	STD. METAL PLATE GUARD RAIL AND GUIDE POSTS PS-4
9	SUMMARY SHEET
10	SUMMARY OF PAY QUANTITIES
11-19	PLAN AND PROFILE SHEETS



ROADWAY LENGTH ----- 23,976.95 FT. • 4.541 MI.

EXCEPTIONS:  
 STA. 288+89.75 TO STA. 290+57.30 • 167.55 FT.  
 STA. 317+43.75 TO STA. 327+09.50 • 965.75 FT.  
 EQUATIONS: NONE

SCALES

PLAN 1"=100'  
 PROFILE (HOR. 1"=100'  
 VER. 1"=10')  
 CROSS SECTIONS 1"=10'  
 LAYOUT MAP 1"=5000'

U.S.C. & G.S. LEVEL DATUM  
 BEARINGS FROM OBSERVATION ON POLARIS

CONVENTIONAL SIGNS

- PROPOSED ROAD
- RAILROADS
- - - RANGE & TOWNSHIP LINES
- - - SECTION LINES
- - - QUARTER SECTION LINES
- - - FENCES
- - - TURNPIKE CENTER LINE
- - - RIGHT-OF-WAY LINES
- - - GROUND LINES
- - - GRADE LINE
- - - TRAVELLED ROADS
- - - CULVERTS & BRIDGES
- ⊕ TELEPHONE & TELEGRAPH
- ⊕ POWER LINES
- BUILDINGS
- \* UNLOADING POINTS
- OIL WELLS
- RIGHT OF WAY MARKERS

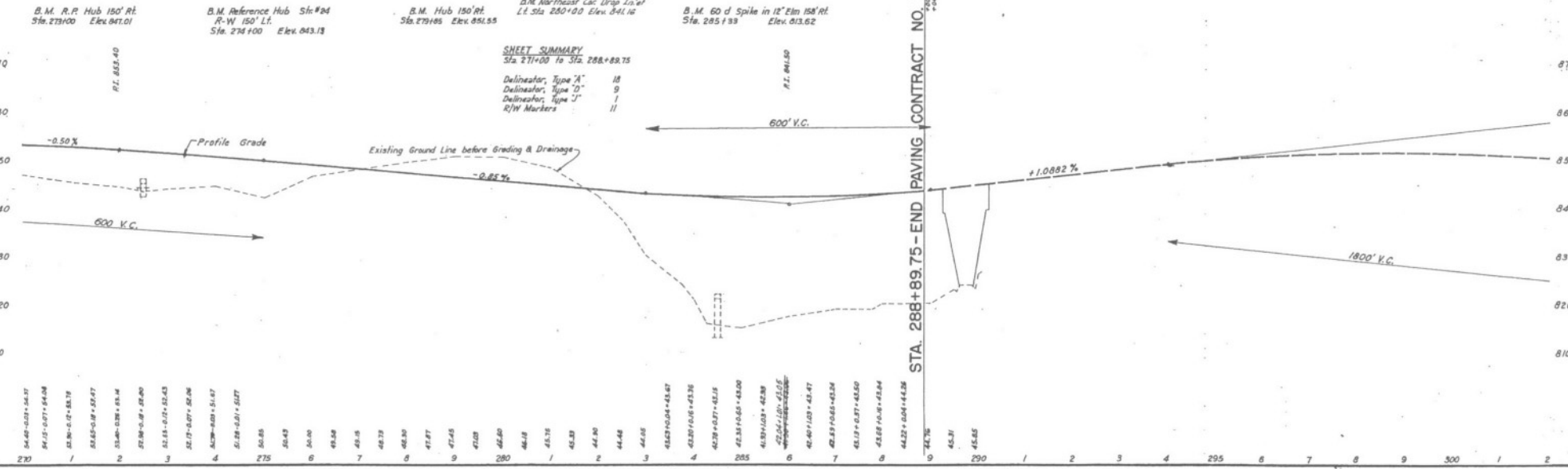
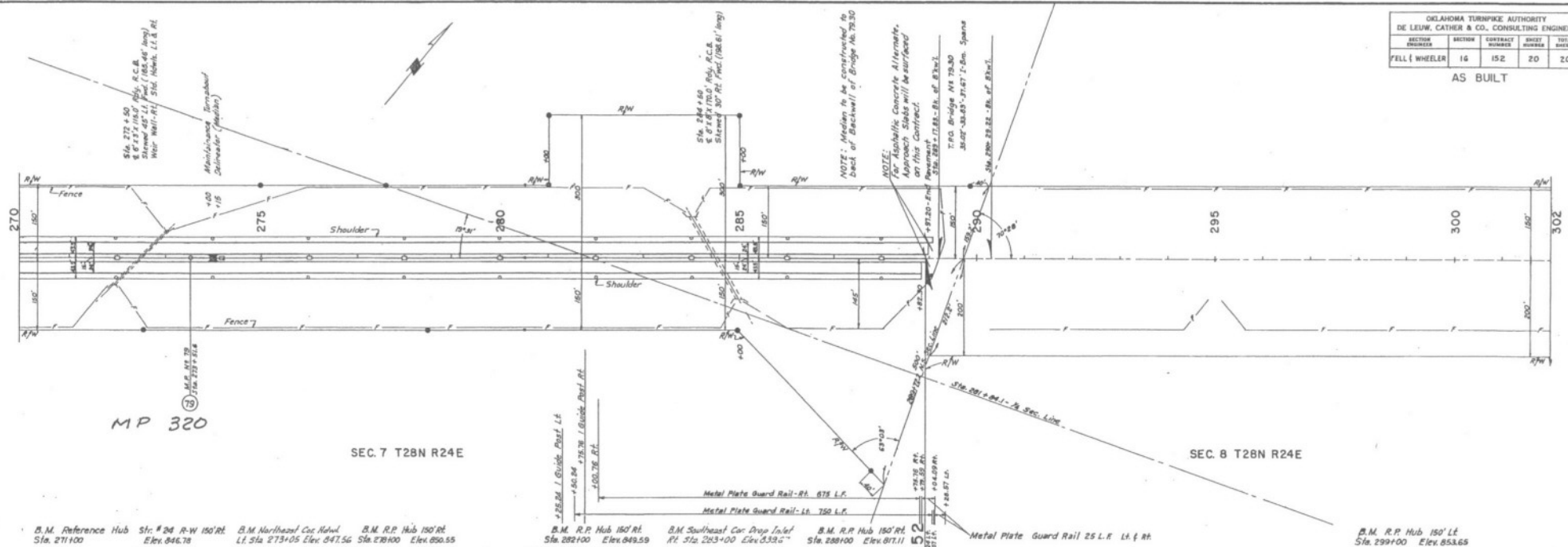
SPECIAL PROVISIONS GOVERN AND OKLAHOMA TURNPIKE AUTHORITY  
 STANDARD SPECIFICATIONS GOVERN, EDITION OF JULY 1955.

SUBMITTED BY: FELL & WHEELER  
 BY: *William J. Fall*  
 OKLAHOMA REGISTERED PROFESSIONAL ENGINEER NO. 602 DATE: 12-2-55  
 RECOMMENDED BY: DE LEUW, CATHER & COMPANY  
 BY: *Wm. J. Cather* DATE: 1-4-56  
 APPROVED: *W. D. Finkbeiner* FOR THE OKLAHOMA TURNPIKE AUTHORITY DATE: 1-4-56



OKLAHOMA TURNPIKE AUTHORITY				
DE LEUW, CATHAR & CO., CONSULTING ENGINEER				
SECTION NUMBER	SECTION	CONTRACT NUMBER	SHEET NUMBER	TOTAL SHEETS
FELL & WHEELER	16	152	20	20

AS BUILT

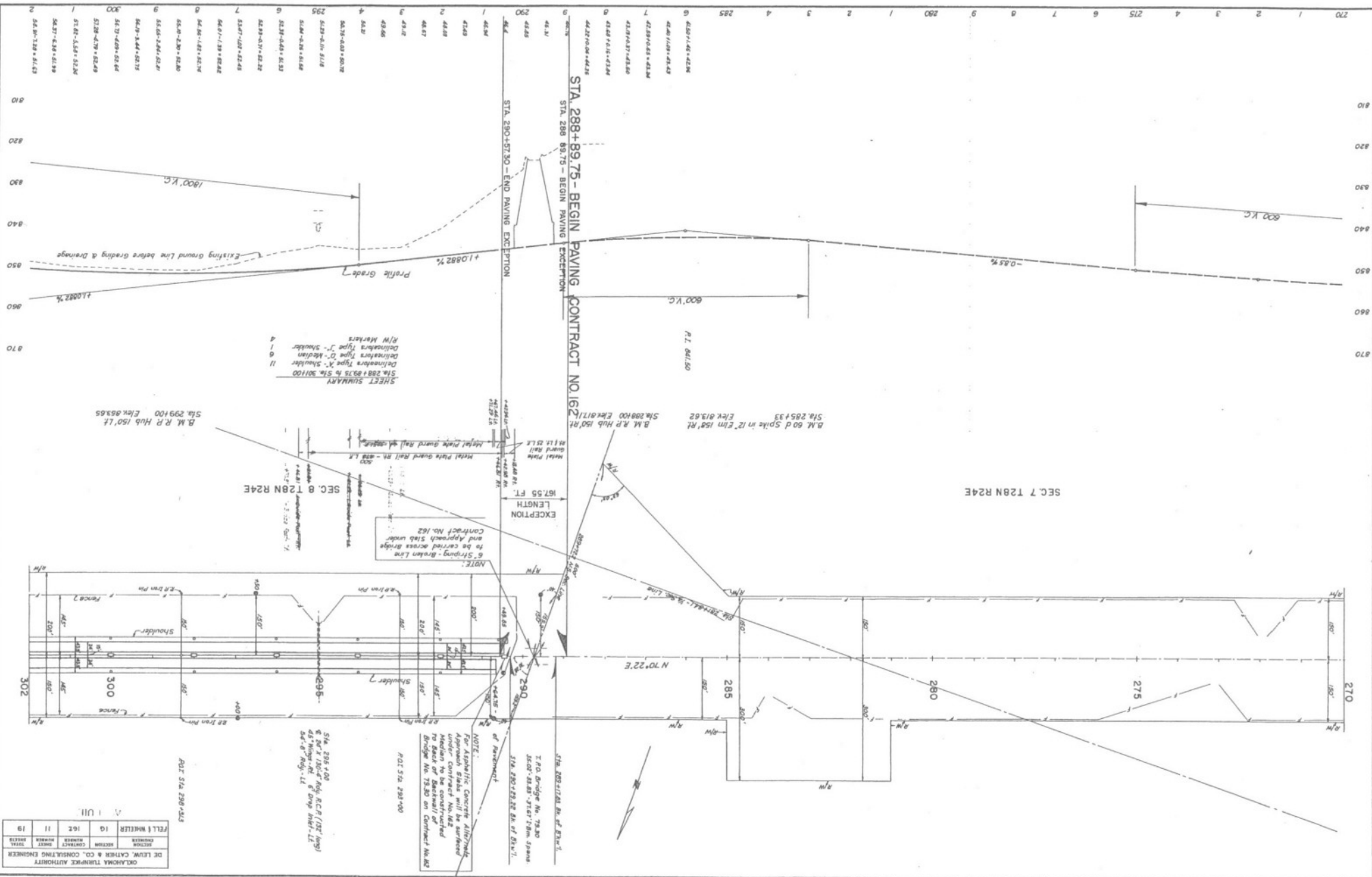


**SHEET SUMMARY**  
 Sta. 271+00 to Sta. 288+89.75  
 Delinicator, Type "A" 18  
 Delinicator, Type "D" 9  
 Delinicator, Type "J" 1  
 R/W Markers 11

STA. 288+89.75 - END PAVING CONTRACT NO. 152

- 54.48+02.71+64.87
- 54.51+07.17+64.08
- 55.30+07.58+57.19
- 55.53+05.18+57.47
- 55.50+03.26+53.14
- 57.28+01.89+52.80
- 57.51+07.52+52.43
- 57.73+07.56+56.06
- 57.80+03+51.67
- 57.88+03.17+58.77
- 58.85
- 58.83
- 59.00
- 59.28
- 59.35
- 59.33
- 59.30
- 57.87
- 57.65
- 57.03
- 56.50
- 56.18
- 55.76
- 55.33
- 54.90
- 54.46
- 54.05
- 53.57+0.04+43.67
- 53.20+0.05+43.36
- 52.78+0.07+42.15
- 52.35+0.05+43.00
- 51.93+0.07+42.89
- 51.54+0.07+42.05
- 51.10+0.07+42.47
- 50.67+0.05+42.24
- 50.23+0.07+42.50
- 49.78+0.06+43.84
- 49.32+0.04+44.26

270 1 2 3 4 5 6 7 8 9 280 285 290 1 2 3 4 295 6 7 8 9 300 1 2



**SHEET SUMMARY**  
 STA. 288+89.75 to STA. 301+00

11	Shoulder	Definers Type 'A'
6	Median	Definers Type 'D'
1	Shoulder	Definers Type 'J'
4	M/W Markers	

**NOTES:**  
 5. Striping - Broken Line and Approach Slab under Contract No. 162

**NOTE:**  
 For Asphaltic Concrete Approach Slabs will be surfaced Median to be constructed re back of backwall of bridge No. 7380 on Contract No. 162 of placement.

POB STA. 289+00

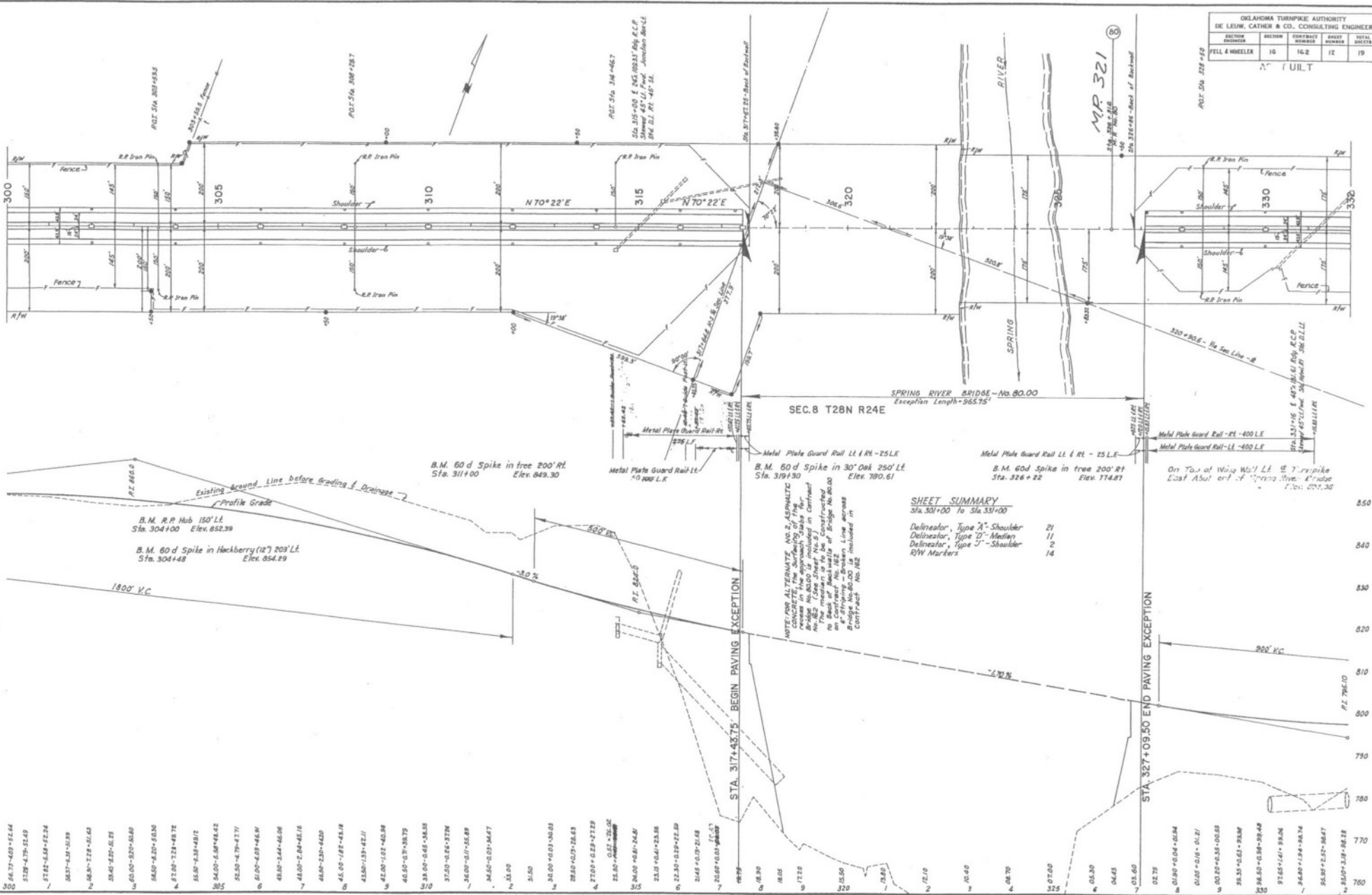
STA. 288+100  
 45' High "A" Arch, R.C.P. (15' x 9')  
 45' High "A" Arch, R.C.P. (15' x 9')  
 45' x 6' Rqdy. LT

POB STA. 288+55

OKLAHOMA TURNPIKE AUTHORITY				
DR. LEWIS CATHRA & CO., CONSULTING ENGINEERS				
REGION	SECTION	CONTRACT	SHEET	TOTAL
19	II	162	11	19
FELL & MUELLER				

OKLAHOMA TURNPIKE AUTHORITY				
DIE LEUW, CATHER & CO., CONSULTING ENGINEER				
SECTION NUMBER	REVISION	CONTRACT NUMBER	SHEET NUMBER	TOTAL SHEETS
PELL & WHEELER	16	16.2	12	19

NO. 17



SEC. 8 T28N R24E  
 SPRING RIVER BRIDGE - No. 80.00  
 Exception Length - 965.75'

**SHEET SUMMARY**  
 Sta. 307+00 To Sta. 331+00

Delineator, Type "A" - Shoulder	21
Delineator, Type "D" - Median	11
Delineator, Type "J" - Shoulder	2
R/W Markers	14

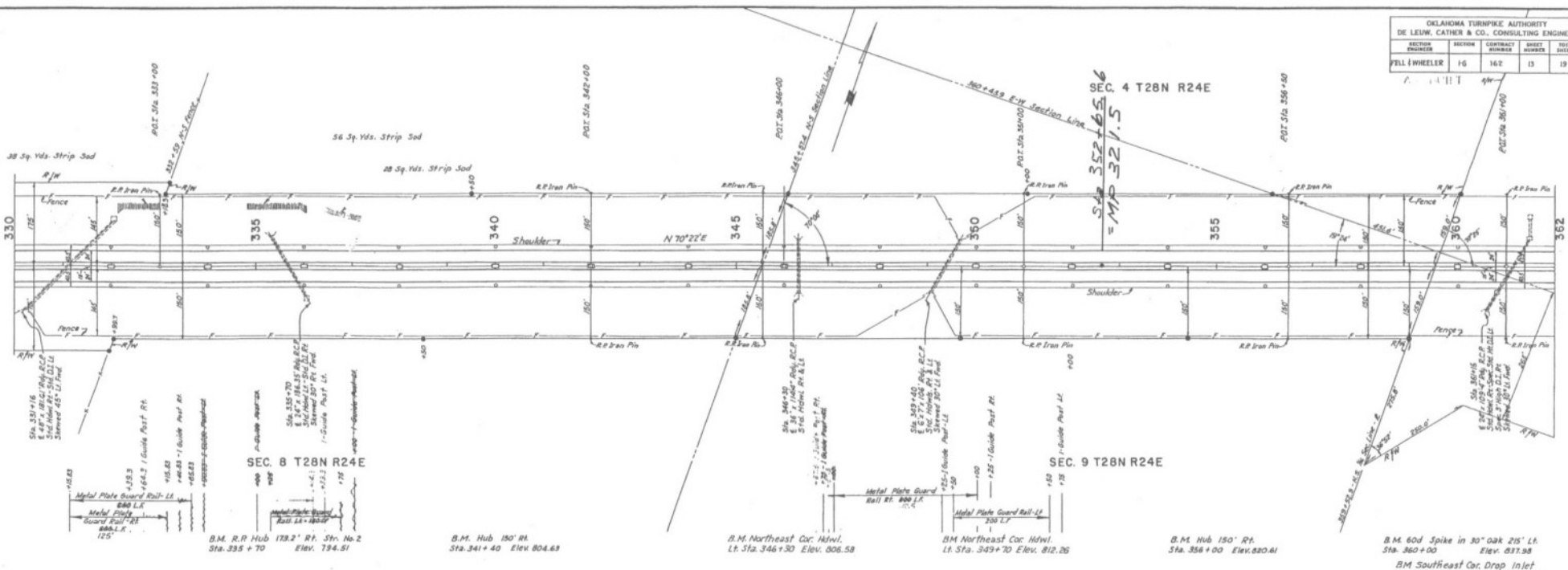
NOTE FOR ALTERNATE NO. 2, ASPHALT CONCRETE THE SURFING OF THE BRIDGE No. 80.00 IS INCLUDED IN CONTRACT No. 328+00. THE BRIDGE No. 80.00 IS TO BE CONSTRUCTED TO BACK OF BACK WALLS OF BRIDGE No. 80.00 AT STATIONING - BRACKEN LINE ACROSS BRIDGE No. 80.00 IS INCLUDED IN CONTRACT No. 80.

STA. 317+43.75 BEGIN PAVING EXCEPTION

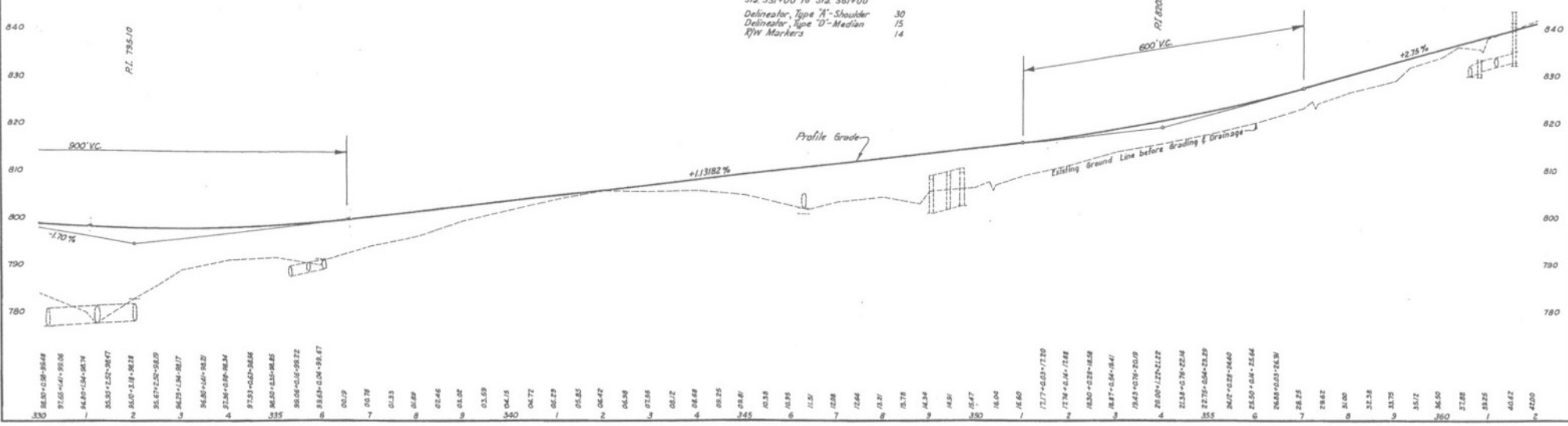
STA. 327+09.50 END PAVING EXCEPTION

300	760
1	760
2	760
3	760
4	760
5	760
6	760
7	760
8	760
9	760
10	760
11	760
12	760
13	760
14	760
15	760
16	760
17	760
18	760
19	760
20	760
21	760
22	760
23	760
24	760
25	760
26	760
27	760
28	760
29	760
30	760
31	760
32	760
33	760
34	760
35	760
36	760
37	760
38	760
39	760
40	760
41	760
42	760
43	760
44	760
45	760
46	760
47	760
48	760
49	760
50	760
51	760
52	760
53	760
54	760
55	760
56	760
57	760
58	760
59	760
60	760
61	760
62	760
63	760
64	760
65	760
66	760
67	760
68	760
69	760
70	760
71	760
72	760
73	760
74	760
75	760
76	760
77	760
78	760
79	760
80	760
81	760
82	760
83	760
84	760
85	760
86	760
87	760
88	760
89	760
90	760
91	760
92	760
93	760
94	760
95	760
96	760
97	760
98	760
99	760
100	760

OKLAHOMA TURNPIKE AUTHORITY				
DE LEW, CATHAR & CO., CONSULTING ENGINEER				
SECTION	SECTION	CONTRACT	SHEET	TOTAL
PILL & WHEELER	15	162	15	19



**SHEET SUMMARY**  
 Sta. 331+00 to Sta. 361+00  
 Delineator, Type 74" Shoulder 30  
 Delineator, Type 70" Median 15  
 R/W Markers 14

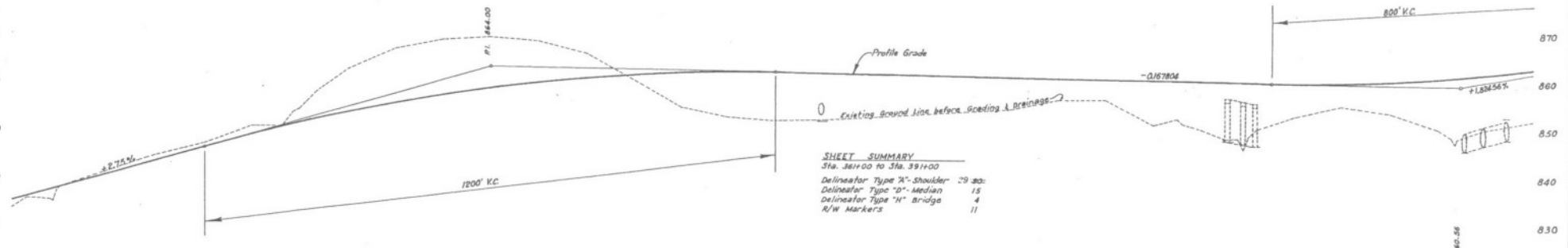
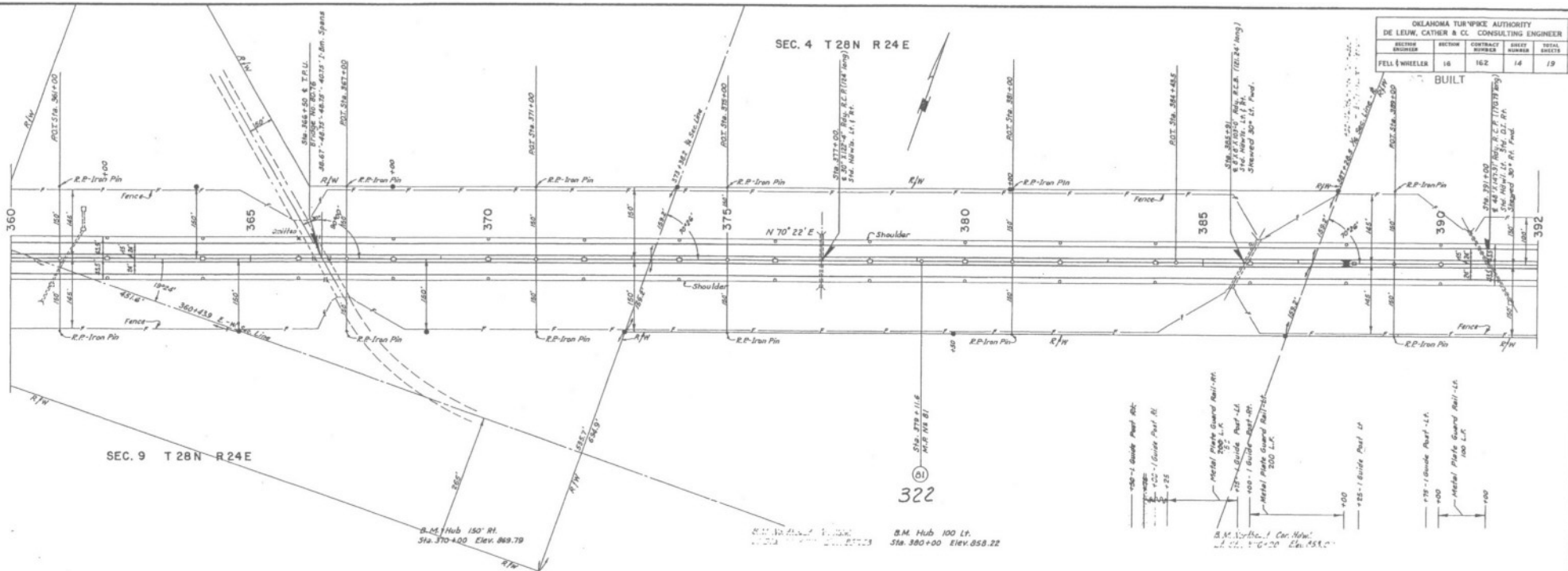


330	88.50+00	89.548
331	87.05+00	89.006
332	84.80+00	88.574
333	85.85+00	88.047
334	85.00+00	88.318
335	85.67+00	88.919
336	86.23+00	89.617
337	86.80+00	90.320
338	87.36+00	91.024
339	87.93+00	91.728
340	88.50+00	92.432
341	89.06+00	93.136
342	89.63+00	93.840
343	90.20+00	94.544
344	90.77+00	95.248
345	91.34+00	95.952
346	91.91+00	96.656
347	92.48+00	97.360
348	93.05+00	98.064
349	93.62+00	98.768
350	94.19+00	99.472
351	94.76+00	100.176
352	95.33+00	100.880
353	95.90+00	101.584
354	96.47+00	102.288
355	97.04+00	102.992
356	97.61+00	103.696
357	98.18+00	104.400
358	98.75+00	105.104
359	99.32+00	105.808
360	99.89+00	106.512
361	100.46+00	107.216
362	101.03+00	107.920
363	101.60+00	108.624
364	102.17+00	109.328
365	102.74+00	110.032
366	103.31+00	110.736
367	103.88+00	111.440
368	104.45+00	112.144
369	105.02+00	112.848
370	105.59+00	113.552
371	106.16+00	114.256
372	106.73+00	114.960
373	107.30+00	115.664
374	107.87+00	116.368
375	108.44+00	117.072
376	109.01+00	117.776
377	109.58+00	118.480
378	110.15+00	119.184
379	110.72+00	119.888
380	111.29+00	120.592
381	111.86+00	121.296
382	112.43+00	122.000
383	113.00+00	122.704
384	113.57+00	123.408
385	114.14+00	124.112
386	114.71+00	124.816
387	115.28+00	125.520
388	115.85+00	126.224
389	116.42+00	126.928
390	116.99+00	127.632
391	117.56+00	128.336
392	118.13+00	129.040
393	118.70+00	129.744
394	119.27+00	130.448
395	119.84+00	131.152
396	120.41+00	131.856
397	120.98+00	132.560
398	121.55+00	133.264
399	122.12+00	133.968
400	122.69+00	134.672
401	123.26+00	135.376
402	123.83+00	136.080
403	124.40+00	136.784
404	124.97+00	137.488
405	125.54+00	138.192
406	126.11+00	138.896
407	126.68+00	139.600
408	127.25+00	140.304
409	127.82+00	141.008
410	128.39+00	141.712
411	128.96+00	142.416
412	129.53+00	143.120
413	130.10+00	143.824
414	130.67+00	144.528
415	131.24+00	145.232
416	131.81+00	145.936
417	132.38+00	146.640
418	132.95+00	147.344
419	133.52+00	148.048
420	134.09+00	148.752



SEC. 4 T 28N R 24E

SEC. 9 T 28N R 24E



**SHEET SUMMARY**  
 Sta. 361+00 to Sta. 391+00  
 Delineator Type "A" - Shoulder 29 30:  
 Delineator Type "D" - Median 15  
 Delineator Type "H" - Bridge 4  
 R/W Markers 11

360	36.50
1	37.00
2	38.25
3	40.62
4	42.00
5	43.28
6	44.75
7	46.12
8	47.50
9	48.88 + 0.01 = 48.85
10	50.25 + 0.12 = 50.13
11	51.62 + 0.27 = 51.35
12	53.00 + 0.49 = 52.51
13	54.38 + 0.78 = 53.60
14	55.75 + 1.09 = 54.66
15	57.12 + 1.49 = 55.63
16	58.50 + 1.94 = 56.56
17	59.88 + 2.46 = 57.42
18	61.25 + 3.03 = 58.22
19	62.62 + 3.64 = 58.98
20	64.00 + 4.30 = 59.70
21	65.38 + 5.00 = 60.38
22	66.75 + 5.73 = 61.02
23	68.12 + 6.50 = 61.62
24	69.50 + 7.30 = 62.20
25	70.88 + 8.10 = 62.78
26	72.25 + 8.90 = 63.35
27	73.62 + 9.70 = 63.92
28	75.00 + 10.50 = 64.50
29	76.38 + 11.30 = 65.08
30	77.75 + 12.10 = 65.65
31	79.12 + 12.90 = 66.22
32	80.50 + 13.70 = 66.80
33	81.88 + 14.50 = 67.38
34	83.25 + 15.30 = 67.95
35	84.62 + 16.10 = 68.52
36	86.00 + 16.90 = 69.10
37	87.38 + 17.70 = 69.68
38	88.75 + 18.50 = 70.25
39	90.12 + 19.30 = 70.82
40	91.50 + 20.10 = 71.40
41	92.88 + 20.90 = 71.98
42	94.25 + 21.70 = 72.55
43	95.62 + 22.50 = 73.12
44	97.00 + 23.30 = 73.70
45	98.38 + 24.10 = 74.28
46	99.75 + 24.90 = 74.85
47	101.12 + 25.70 = 75.42
48	102.50 + 26.50 = 76.00
49	103.88 + 27.30 = 76.58
50	105.25 + 28.10 = 77.15
51	106.62 + 28.90 = 77.72
52	108.00 + 29.70 = 78.30
53	109.38 + 30.50 = 78.88
54	110.75 + 31.30 = 79.45
55	112.12 + 32.10 = 80.02
56	113.50 + 32.90 = 80.60
57	114.88 + 33.70 = 81.18
58	116.25 + 34.50 = 81.75
59	117.62 + 35.30 = 82.32
60	119.00 + 36.10 = 82.90
61	120.38 + 36.90 = 83.48
62	121.75 + 37.70 = 84.05
63	123.12 + 38.50 = 84.62
64	124.50 + 39.30 = 85.20
65	125.88 + 40.10 = 85.78
66	127.25 + 40.90 = 86.35
67	128.62 + 41.70 = 86.92
68	130.00 + 42.50 = 87.50
69	131.38 + 43.30 = 88.08
70	132.75 + 44.10 = 88.65
71	134.12 + 44.90 = 89.22
72	135.50 + 45.70 = 89.80
73	136.88 + 46.50 = 90.38
74	138.25 + 47.30 = 90.95
75	139.62 + 48.10 = 91.52
76	141.00 + 48.90 = 92.10
77	142.38 + 49.70 = 92.68
78	143.75 + 50.50 = 93.25
79	145.12 + 51.30 = 93.82
80	146.50 + 52.10 = 94.40
81	147.88 + 52.90 = 94.98
82	149.25 + 53.70 = 95.55
83	150.62 + 54.50 = 96.12
84	152.00 + 55.30 = 96.70
85	153.38 + 56.10 = 97.28
86	154.75 + 56.90 = 97.85
87	156.12 + 57.70 = 98.42
88	157.50 + 58.50 = 99.00
89	158.88 + 59.30 = 99.58
90	160.25 + 60.10 = 100.15
91	161.62 + 60.90 = 100.72
92	163.00 + 61.70 = 101.30
93	164.38 + 62.50 = 101.88
94	165.75 + 63.30 = 102.45
95	167.12 + 64.10 = 103.02
96	168.50 + 64.90 = 103.60
97	169.88 + 65.70 = 104.18
98	171.25 + 66.50 = 104.75
99	172.62 + 67.30 = 105.32
100	174.00 + 68.10 = 105.90
101	175.38 + 68.90 = 106.48
102	176.75 + 69.70 = 107.05
103	178.12 + 70.50 = 107.62
104	179.50 + 71.30 = 108.20
105	180.88 + 72.10 = 108.78
106	182.25 + 72.90 = 109.35
107	183.62 + 73.70 = 109.92
108	185.00 + 74.50 = 110.50
109	186.38 + 75.30 = 111.08
110	187.75 + 76.10 = 111.65
111	189.12 + 76.90 = 112.22
112	190.50 + 77.70 = 112.80
113	191.88 + 78.50 = 113.38
114	193.25 + 79.30 = 113.95
115	194.62 + 80.10 = 114.52
116	196.00 + 80.90 = 115.10
117	197.38 + 81.70 = 115.68
118	198.75 + 82.50 = 116.25
119	200.12 + 83.30 = 116.82
120	201.50 + 84.10 = 117.40
121	202.88 + 84.90 = 117.98
122	204.25 + 85.70 = 118.55
123	205.62 + 86.50 = 119.12
124	207.00 + 87.30 = 119.70
125	208.38 + 88.10 = 120.28
126	209.75 + 88.90 = 120.85
127	211.12 + 89.70 = 121.42
128	212.50 + 90.50 = 122.00
129	213.88 + 91.30 = 122.58
130	215.25 + 92.10 = 123.15
131	216.62 + 92.90 = 123.72
132	218.00 + 93.70 = 124.30
133	219.38 + 94.50 = 124.88
134	220.75 + 95.30 = 125.45
135	222.12 + 96.10 = 126.02
136	223.50 + 96.90 = 126.60
137	224.88 + 97.70 = 127.18
138	226.25 + 98.50 = 127.75
139	227.62 + 99.30 = 128.32
140	229.00 + 100.10 = 128.90
141	230.38 + 100.90 = 129.48
142	231.75 + 101.70 = 130.05
143	233.12 + 102.50 = 130.62
144	234.50 + 103.30 = 131.20
145	235.88 + 104.10 = 131.78
146	237.25 + 104.90 = 132.35
147	238.62 + 105.70 = 132.92
148	240.00 + 106.50 = 133.50
149	241.38 + 107.30 = 134.08
150	242.75 + 108.10 = 134.65
151	244.12 + 108.90 = 135.22
152	245.50 + 109.70 = 135.80
153	246.88 + 110.50 = 136.38
154	248.25 + 111.30 = 136.95
155	249.62 + 112.10 = 137.52
156	251.00 + 112.90 = 138.10
157	252.38 + 113.70 = 138.68
158	253.75 + 114.50 = 139.25
159	255.12 + 115.30 = 139.82
160	256.50 + 116.10 = 140.40
161	257.88 + 116.90 = 140.98
162	259.25 + 117.70 = 141.55
163	260.62 + 118.50 = 142.12
164	262.00 + 119.30 = 142.70
165	263.38 + 120.10 = 143.28
166	264.75 + 120.90 = 143.85
167	266.12 + 121.70 = 144.42
168	267.50 + 122.50 = 145.00
169	268.88 + 123.30 = 145.58
170	270.25 + 124.10 = 146.15
171	271.62 + 124.90 = 146.72
172	273.00 + 125.70 = 147.30
173	274.38 + 126.50 = 147.88
174	275.75 + 127.30 = 148.45
175	277.12 + 128.10 = 149.02
176	278.50 + 128.90 = 149.60
177	279.88 + 129.70 = 150.18
178	281.25 + 130.50 = 150.75
179	282.62 + 131.30 = 151.32
180	284.00 + 132.10 = 151.90
181	285.38 + 132.90 = 152.48
182	286.75 + 133.70 = 153.05
183	288.12 + 134.50 = 153.62
184	289.50 + 135.30 = 154.20
185	290.88 + 136.10 = 154.78
186	292.25 + 136.90 = 155.35
187	293.62 + 137.70 = 155.92
188	295.00 + 138.50 = 156.50
189	296.38 + 139.30 = 157.08
190	297.75 + 140.10 = 157.65
191	299.12 + 140.90 = 158.22
192	300.50 + 141.70 = 158.80
193	301.88 + 142.50 = 159.38
194	303.25 + 143.30 = 159.95
195	304.62 + 144.10 = 160.52
196	306.00 + 144.90 = 161.10
197	307.38 + 145.70 = 161.68
198	308.75 + 146.50 = 162.25
199	310.12 + 147.30 = 162.82
200	311.50 + 148.10 = 163.40
201	312.88 + 148.90 = 163.98
202	314.25 + 149.70 = 164.55
203	315.62 + 150.50 = 165.12
204	317.00 + 151.30 = 165.70
205	318.38 + 152.10 = 166.28
206	319.75 + 152.90 = 166.85
207	321.12 + 153.70 = 167.42
208	322.50 + 154.50 = 168.00
209	323.88 + 155.30 = 168.58
210	325.25 + 156.10 = 169.15
211	326.62 + 156.90 = 169.72
212	328.00 + 157.70 = 170.30
213	329.38 + 158.50 = 170.88
214	330.75 + 159.30 = 171.45
215	332.12 + 160.10 = 172.02
216	333.50 + 160.90 = 172.60
217	334.88 + 161.70 = 173.18
218	336.25 + 162.50 = 173.75
219	337.62 + 163.30 = 174.32
220	339.00 + 164.10 = 174.90
221	340.38 + 164.90 = 175.48
222	341.75 + 165.70 = 176.05
223	343.12 + 166.50 = 176.62
224	344.50 + 167.30 = 177.20
225	345.88 + 168.10 = 177.78
226	347.25 + 168.90 = 178.35
227	348.62 + 169.70 = 178.92
228	350.00 + 170.50 = 179.50
229	351.38 + 171.30 = 180.08
230	352.75 + 172.10 = 180.65
231	354.12 + 172.90 = 181.22
232	355.50 + 173.70 = 181.80
233	356.88 + 174.50 = 182.38
234	358.25 + 175.30 = 182.95
235	359.62 + 176.10 = 183.52
236	361.00 + 176.90 = 184.10
237	362.38 + 177.70 = 184.68
238	363.75 + 178.50 = 185.25
239	365.12 + 179.30 = 185.82
240	366.50 + 180.10 = 186.40
241	367.88 + 180.90 = 186.98
242	369.25 + 181.70 = 187.55
243	370.62 + 182.50 = 188.12
244	372.00 + 183.30 = 188.70
245	373.38 + 184.10 = 189.28
246	374.75 + 184.90 = 189.85
247	376.12 + 185.70 = 190.42
248	377.50 + 186.50 = 191.00
249	378.88 + 187.30 = 191.58
250	380.25 + 188.10 = 192.15
251	381.62 + 188.90 = 192.72
252	383.00 + 189.70 = 193.30
253	384.38 + 190.50 = 193.88
254	385.75 + 191.30 = 194.45
255	387.12 + 192.10 = 195.02
256	388.50 + 192.90 = 195.60
257	389.88 + 193.70 = 196.18
258	391.25 + 194.50 = 196.75
259	392.62 + 195.30 = 197.32
260	394.00 + 196.10 = 197.90
261	395.38 + 196.90 = 198.48
262	396.75 + 197.70 = 199.05
263	398.12 + 198.50 = 199.62
264	399.50 + 199.30 = 200.20
265	400.88 + 200.10 = 200.78
266	402.25 + 200.90 = 201.35
267	403.62 + 201.70 = 201.92
268	405.00 + 202.50 = 202.50
269	406.38 + 203.30 = 203.08
270	407.75 + 204.10 = 203.65
271	409.12 + 204.90 = 204.22
272	410.50 + 205.70 = 204.80
273	411.88 + 206.50 = 205.38
274	413.25 + 207.30 = 205.95
275	414.62 + 208.10 = 206.52
276	416.00 + 208.90 = 207.10
277	417.38 + 209.70 = 207.68
278	418.75 + 210.50 = 208.25
279	420.12 + 211.30 = 208.82
280	421.50 + 212.10 = 209.40
281	422.88 + 212.90 = 210.00
282	424.25 + 213.70 = 210.58
283	425.62 + 214.50 = 211.15
284	427.00 + 215.30 = 211.72
285	428.38 + 216.10 = 212.30
286	429.75 + 216.90 = 212.88
287	431.12 + 217.70 = 213.45
288	432.50 + 218.50 = 214.02
289	433.88 + 219.30 = 214.60
290	435.25 + 220.10 = 215.18
291	436.62 + 220.90 = 215.75
292	438.00 + 221.70 = 216.32
293	439.38 + 222.50 = 216.90
294	440.75 + 223.30 = 217.48
295	442.12 + 224.10 = 218.05
296	443.50 + 224.90 = 218.62
297	444.88 + 225.70 = 219.20
298	446.25 + 226.50 = 219.78
299	447.62 + 227.30 = 220.35
300	449.00 + 228.10 = 220.92
301	450.38 + 228.90 = 221.50
302	451.75 + 229.70 = 222.08
303	453.12 + 230.50 = 222.65
304	454.50 + 231.30 = 223.22
305	455.88 + 232.10 = 223.80
306	457.25 + 232.90 = 224.38
307	458.62 + 233.70 = 224.95
308	