



**HIGHWAY FACTORS GROUP CHAIRMAN'S  
FACTUAL REPORT**

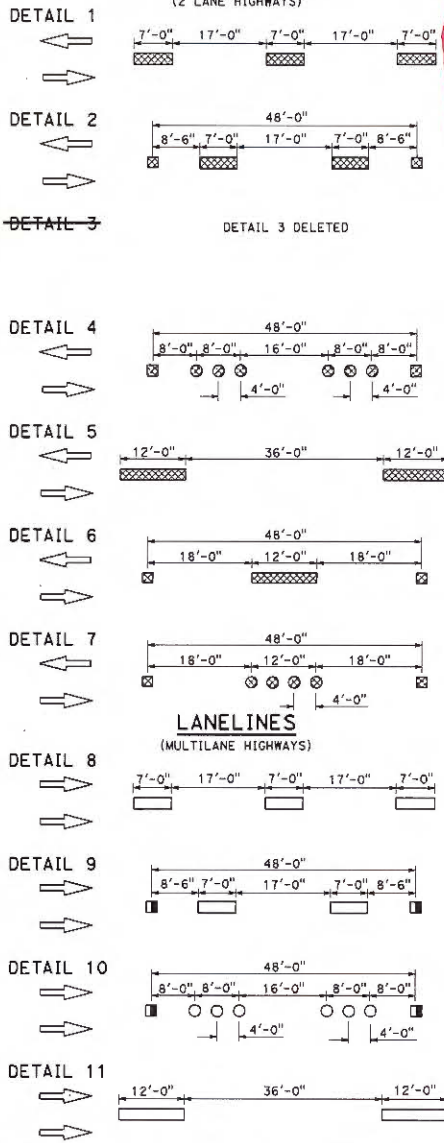
**Highway Attachment – Striping details of travel lanes of I-10 in the vicinity of the crash**

**Palm Springs, CA**

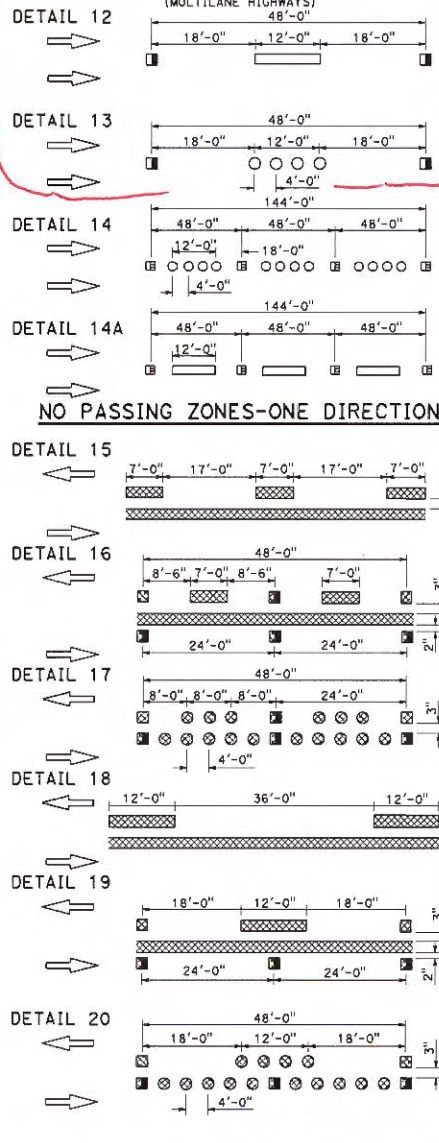
**HWY17MH005**

(2 pages)

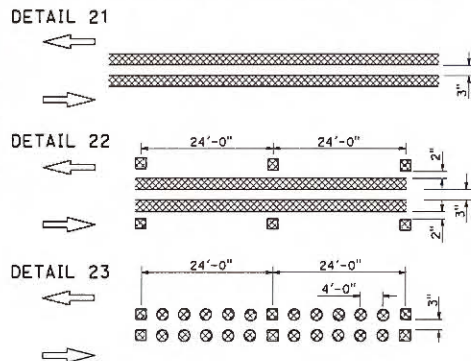
### CENTERLINES (2 LANE HIGHWAYS)



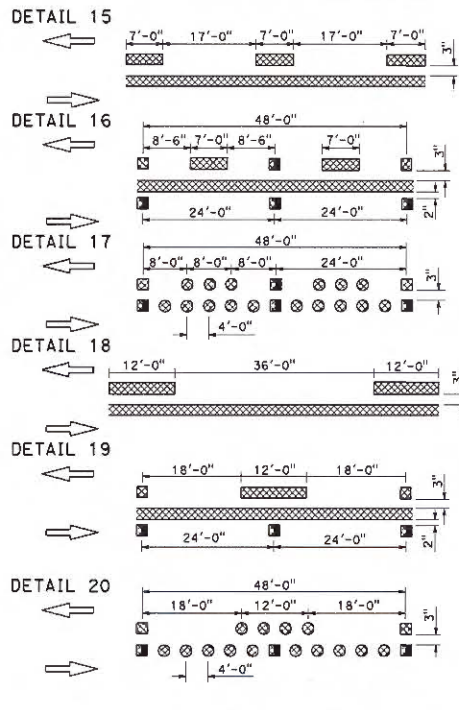
### LANELINES (Cont)



### NO PASSING ZONES-TWO DIRECTION



### NO PASSING ZONES-ONE DIRECTION



DIST	COUNTY	ROUTE	POST MILES TOTAL PROJECT	SHEET No.	TOTAL SHEETS

REGISTERED CIVIL ENGINEER

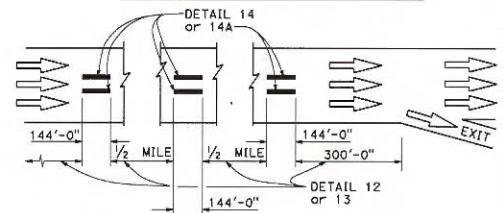
October 30, 2015

PLANS APPROVAL DATE

THE STATE OF CALIFORNIA OR ITS OFFICERS OR AGENTS SHALL NOT BE RESPONSIBLE FOR THE ACCURACY OR COMPLETENESS OF SCANNED COPIES OF THIS PLAN SHEET.

Atifa Ferouz  
CB0402  
No. 3-31-17  
CIVIL  
STATE OF CALIFORNIA

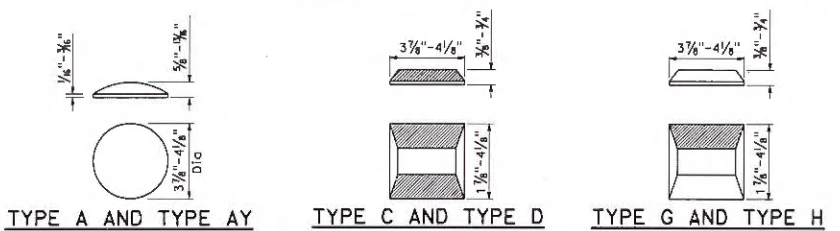
### TYPICAL LANE LINE DELINEATION IN ADVANCE OF EXIT RAMP



**NOTE:**  
Detail 14 is to be used in combination with Detail 13. Detail 14A is to be used in combination with Detail 12.

- LEGEND**
- MARKERS**
- TYPE A WHITE NON-REFLECTIVE
  - ⊗ TYPE AY YELLOW NON-REFLECTIVE
  - ▣ TYPE C RED-CLEAR RETROREFLECTIVE
  - ▤ TYPE D TWO-WAY YELLOW RETROREFLECTIVE
  - ▥ TYPE G ONE-WAY CLEAR RETROREFLECTIVE
  - ▦ TYPE H ONE-WAY YELLOW RETROREFLECTIVE
- LINES**
- ▭ 4" WHITE
  - ▨ 4" YELLOW

### MARKER DETAILS



TYPE A AND TYPE AY      TYPE C AND TYPE D      TYPE G AND TYPE H

RETROREFLECTIVE FACE

STATE OF CALIFORNIA  
DEPARTMENT OF TRANSPORTATION

**PAVEMENT MARKERS  
AND TRAFFIC LINES  
TYPICAL DETAILS**

NO SCALE      **A20A**