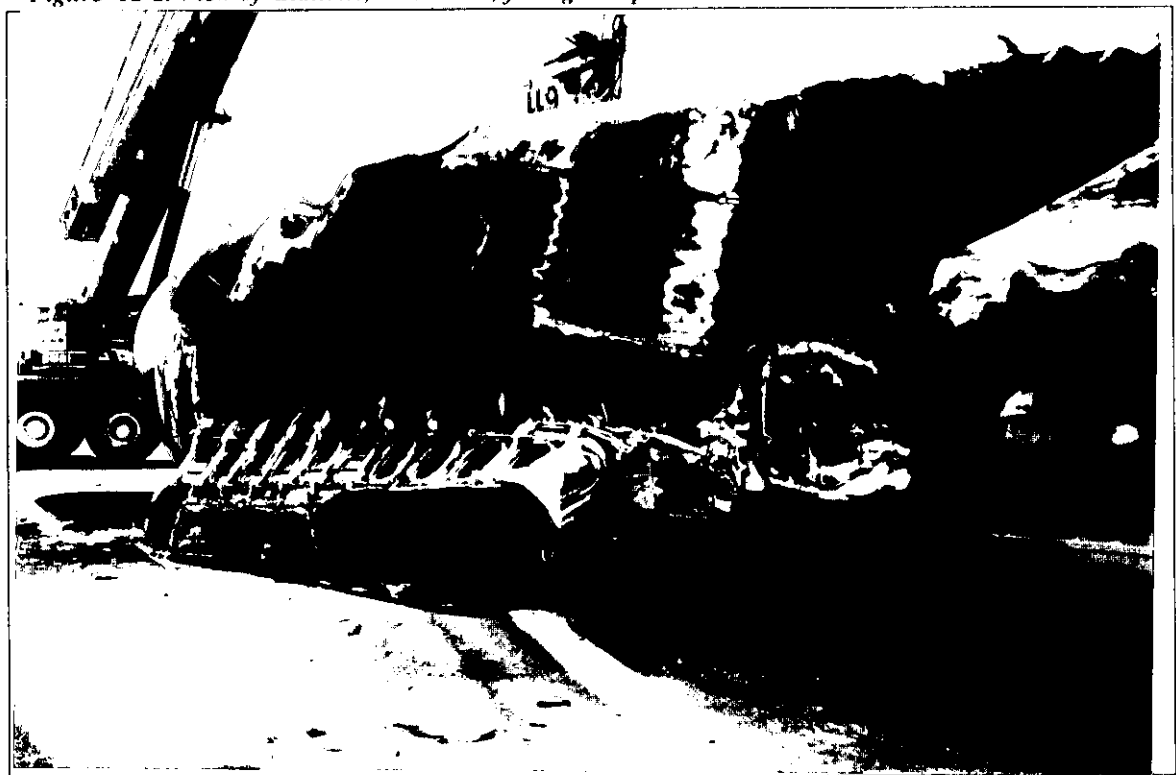


#13 Photographs # 12-1 thru 12-6.

Figure 12-1. Side view of aircraft, adjacent to right wing.



Figure 12-2. View of Stations, 1L and 2L; facing cockpit entrance door.



DCA-97-MA055, N611FE
July 31, 1997
Newark, NJ

Figure 12-3. Side view of aircraft, adjacent to cockpit and facing aft towards right wing.

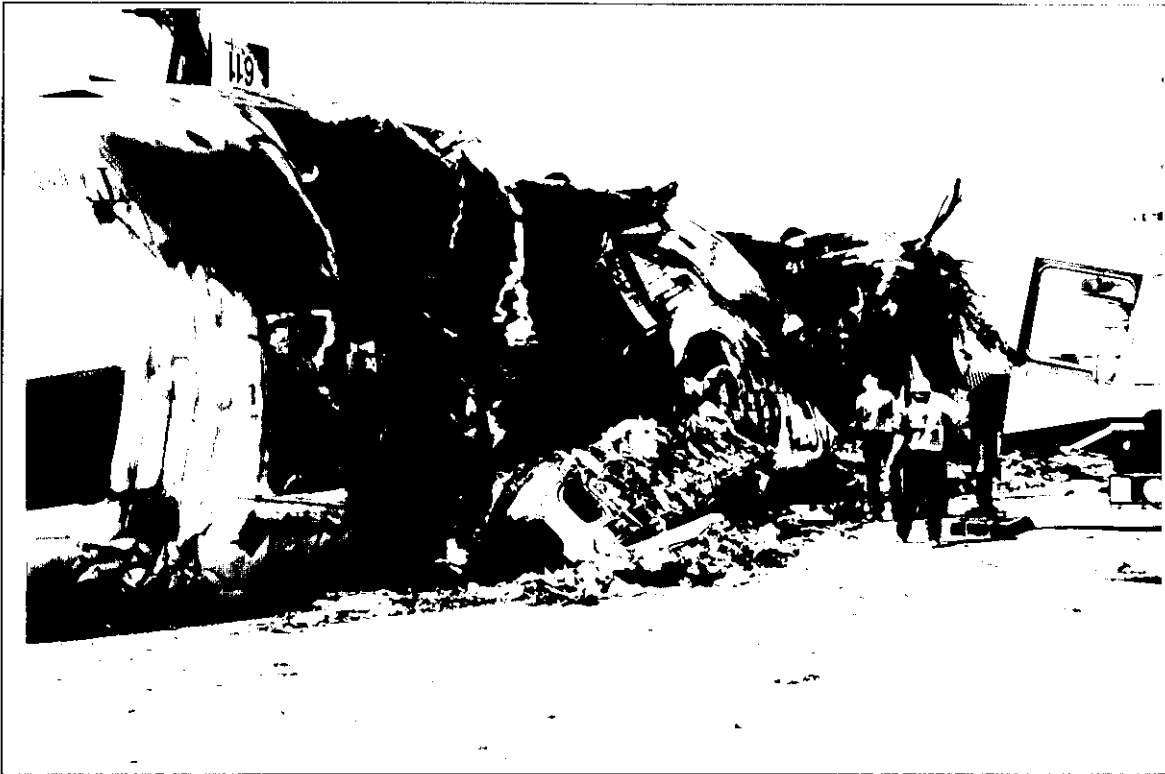


Figure 12-4. Interior view of Stations, 1L and 2L.



DCA-97-MA055, N611FE
July 31, 1997
Newark, NJ

Figure 12-5. Side view of aft section of aircraft, adjacent to right tail section.



Figure 12-6. View of Stations, 8 and 9.



DCA-97-MA055, N611FE
July 31, 1997
Newark, NJ