



NATIONAL TRANSPORTATION SAFETY BOARD - **Public Hearing**

Conrail Derailment in Paulsboro, NJ with Vinyl Chloride Release

GROUP	5
EXHIBIT	
B	

Agency / Organization

CONRAIL

Title

**Conrail Photographs of Bridge and
Locking Mechanisms**

P0173/5

P0177





P0173 / 6

P0178





P0155 / 1



P0155








CONRAIL / Paulsboro, NJ Swing Bridge
Existing steel cable pull winches
(bridge span opens by slewing to left)



PAULSBORO BRIDGE CLOSED



PAULSBORO
OPERATION
DAILY ON SIGNAL
TO NOV. 30
ICE REQUIRED
TO MAR. 1
TENDER CALL
231-2393



PAULSBORO
HOURS OF OPERATION
BRIDGE WILL OPEN DAILY ON SIGNAL
MAR. 1 TO NOV. 30
4 HR. NOTICE REQUIRED
DEC. 1 TO MAR. 1
FOR BRIDGETENDER CALL
856-231-2383

NO
WAKE







WATER TOWER
TOWER OF AMERICA
WATER TOWER, 1000 S.W. 10th Ave.
MIAMI, FL 33135
FOR MORE INFORMATION
CALL 305-375-1234

GET THE DO



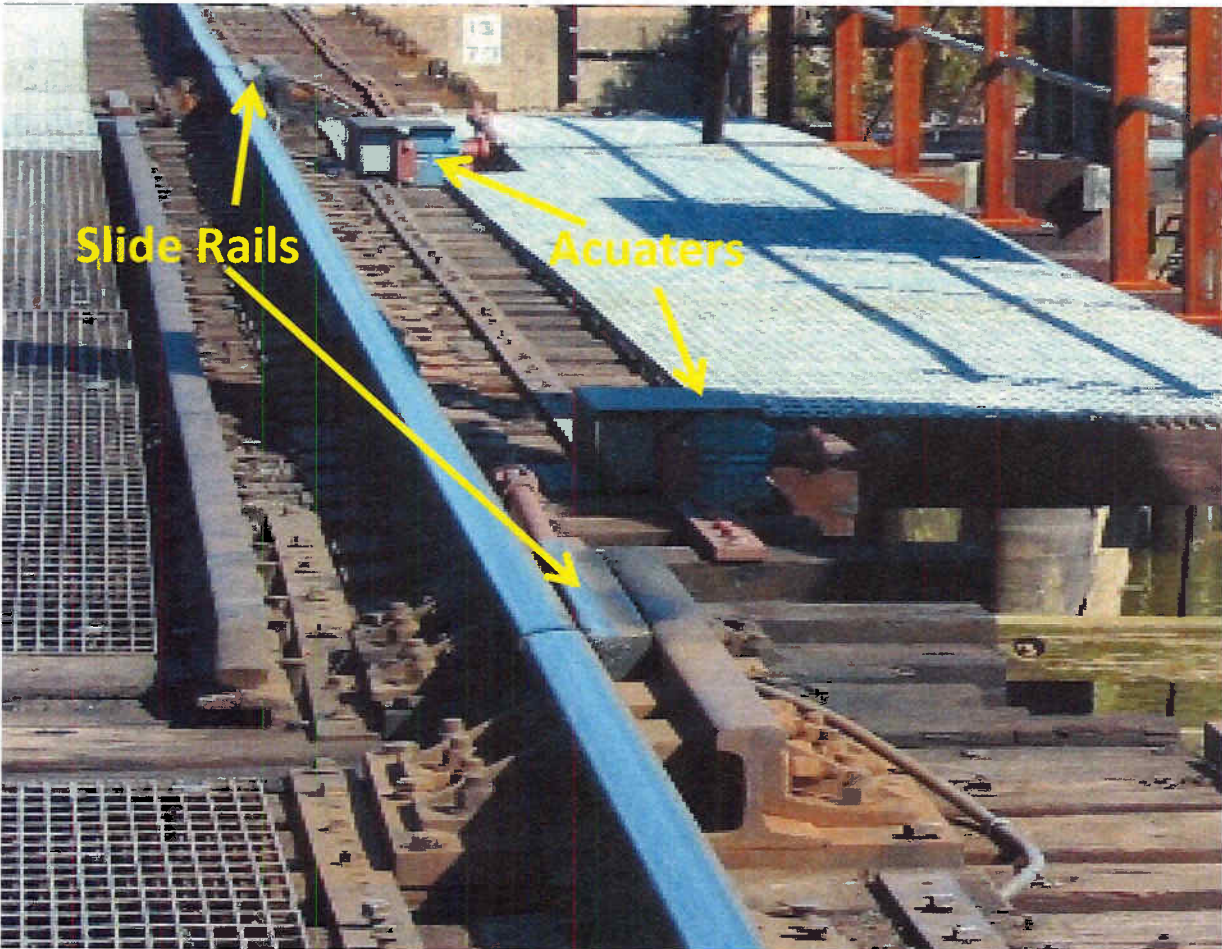
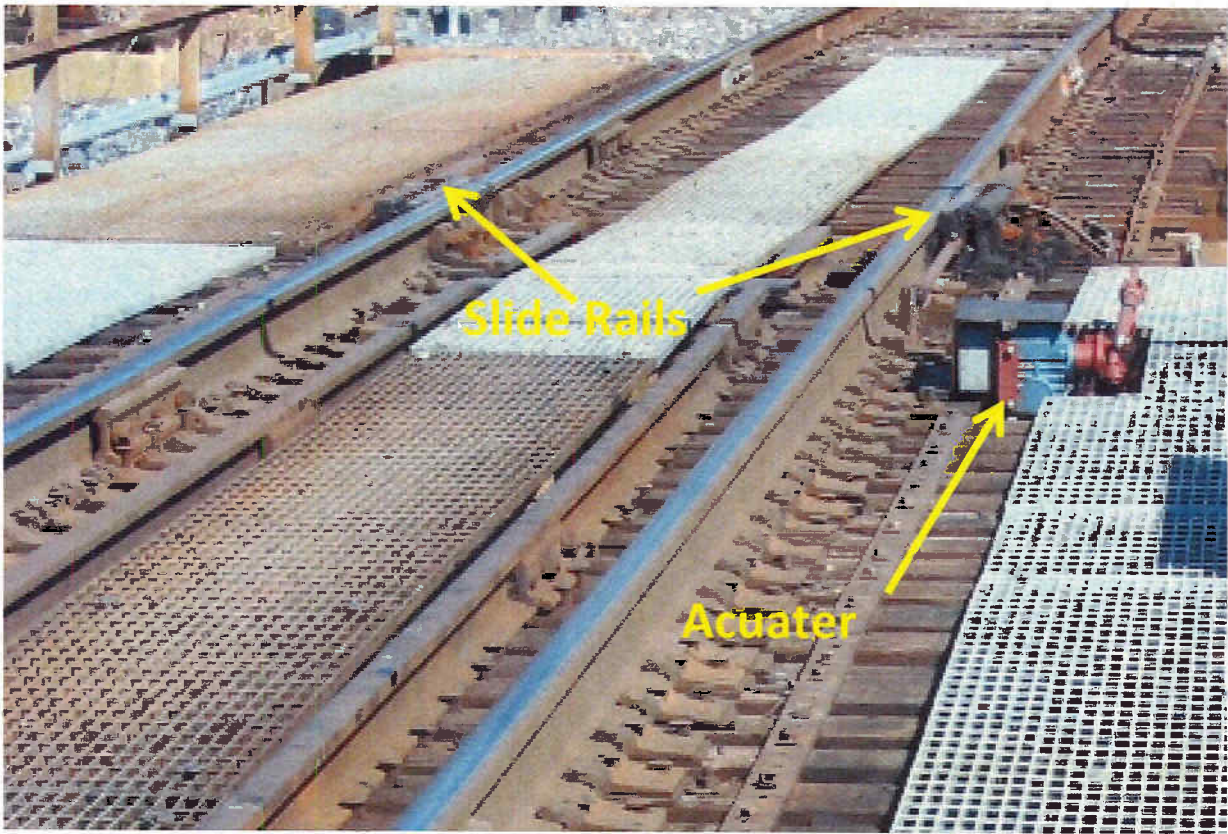


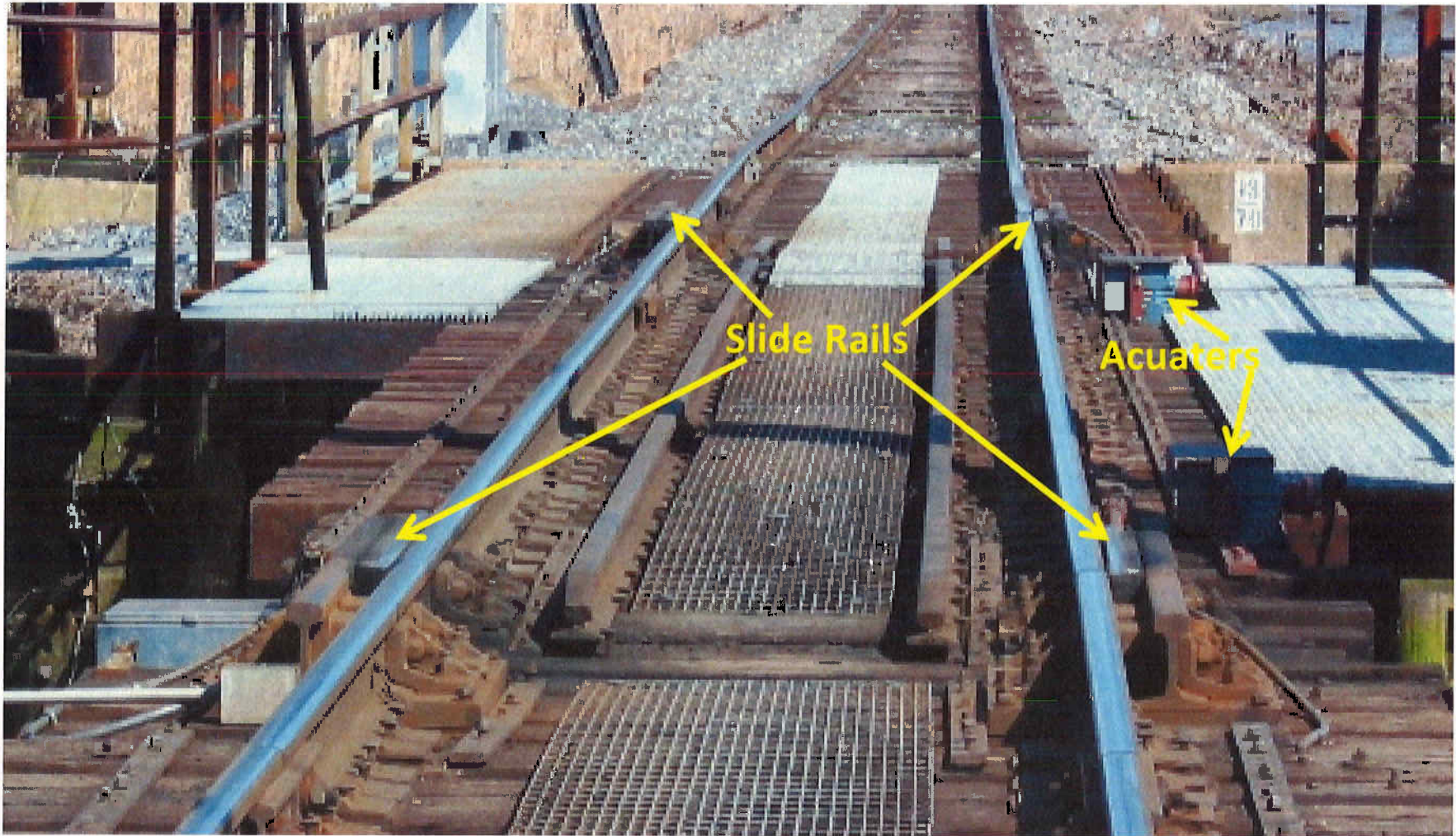






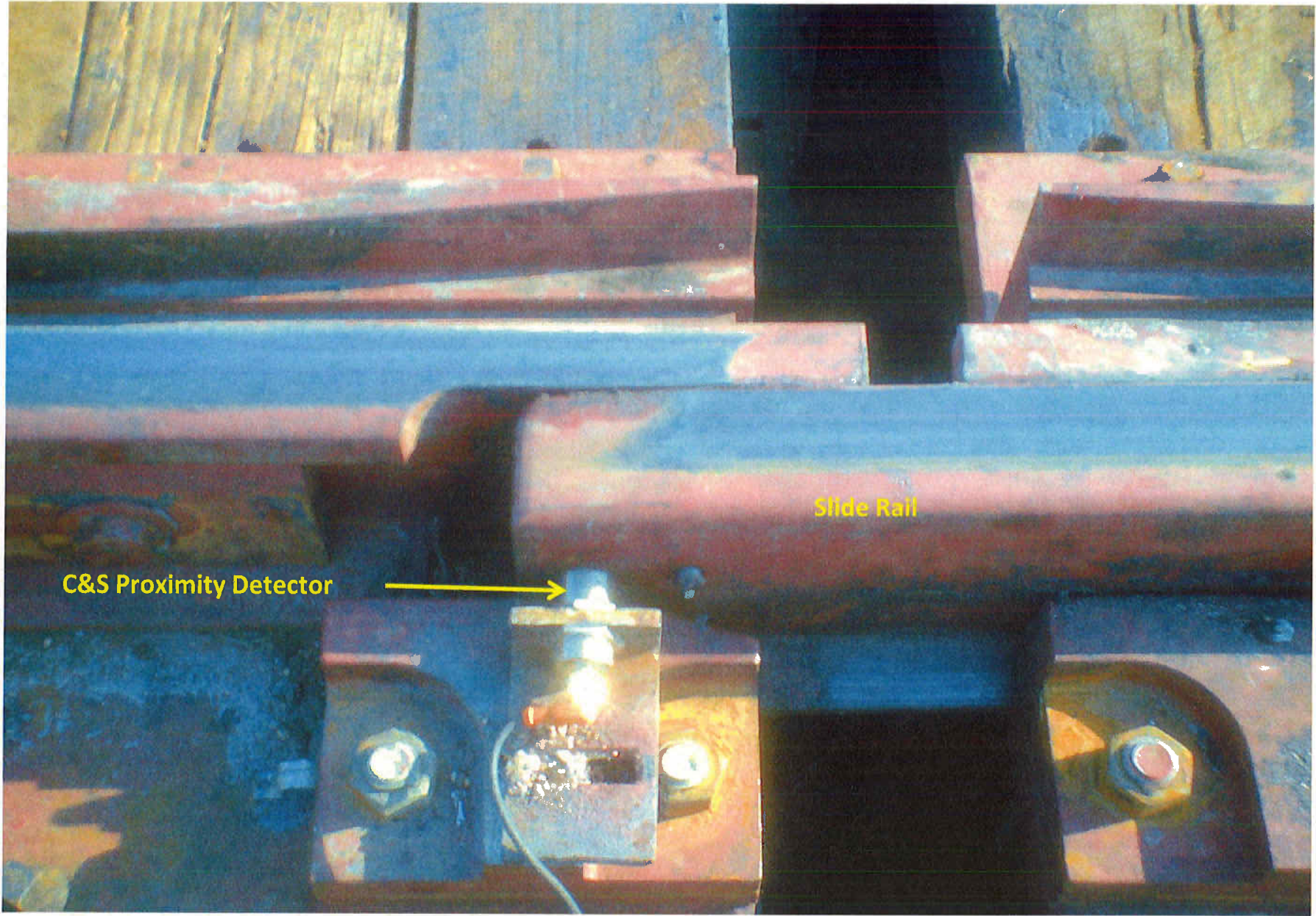
CHANNEL CLOSED
WHEN FLASHING
RED





Slide Rails

Acuaters



C&S Proximity Detector

Slide Rail