



NATIONAL TRANSPORTATION SAFETY BOARD - **Public Hearing**

Conrail Derailment in Paulsboro, NJ with Vinyl Chloride Release

GROUP	5
EXHIBIT	
AK	

Agency / Organization

CONRAIL

Title

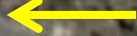
**CONRAIL Presentation -
Mantua Creek Moveable Bridge Operation**

Paulsboro Movable Bridge Open Position

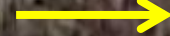


West toward Philadelphia

South



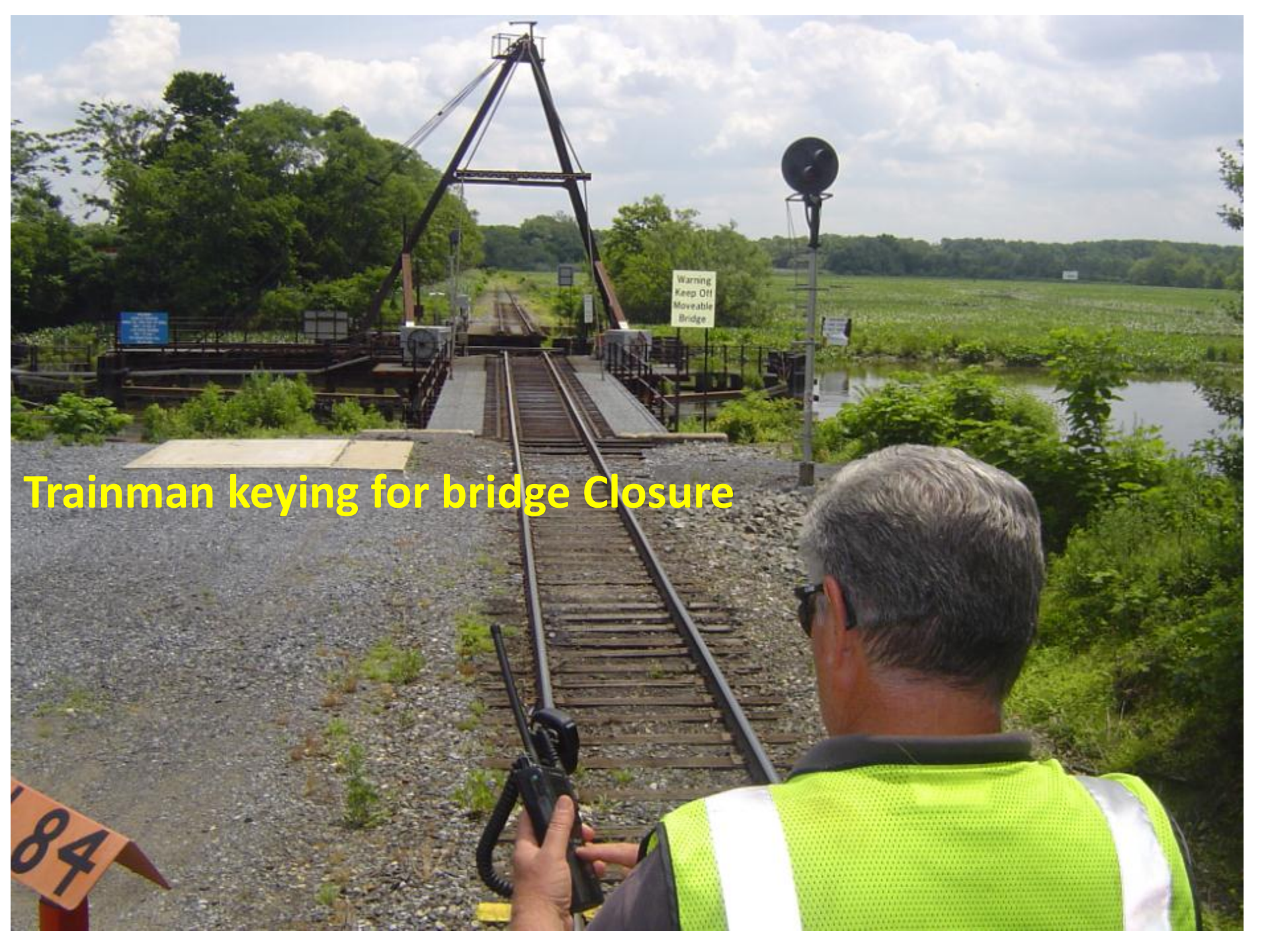
North toward Camden



East



Trainman keying for bridge Closure



Paulsboro Bridge in the Open Position





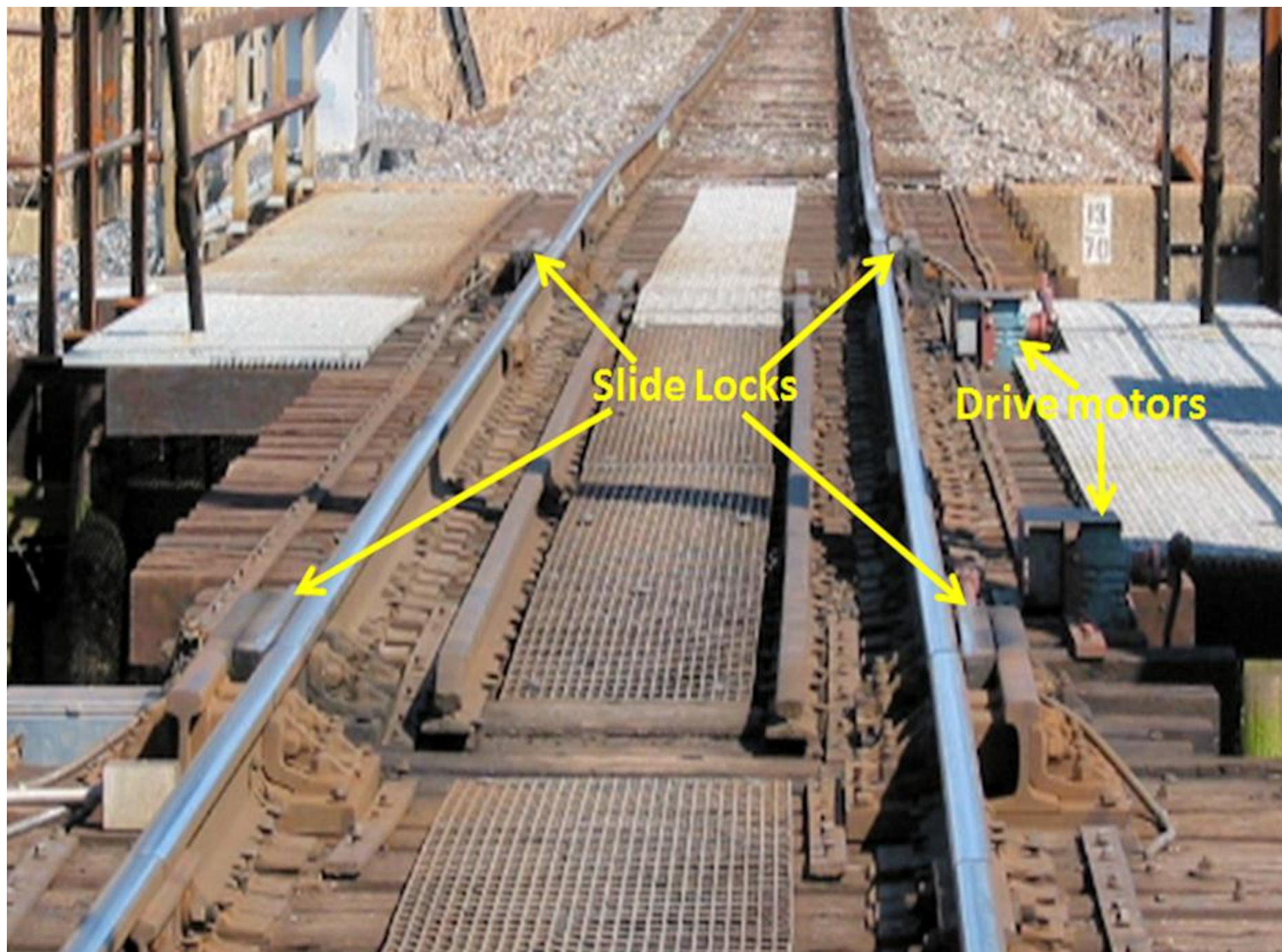
Bridge Almost Closed





ULSBORO
OF OPERATION
PEN DAILY ON SIGNAL
1 TO NOV. 30
TICE REQUIRED
1 TO MAR. 1
GETENDER CALL
231-2393

Bridge Closed

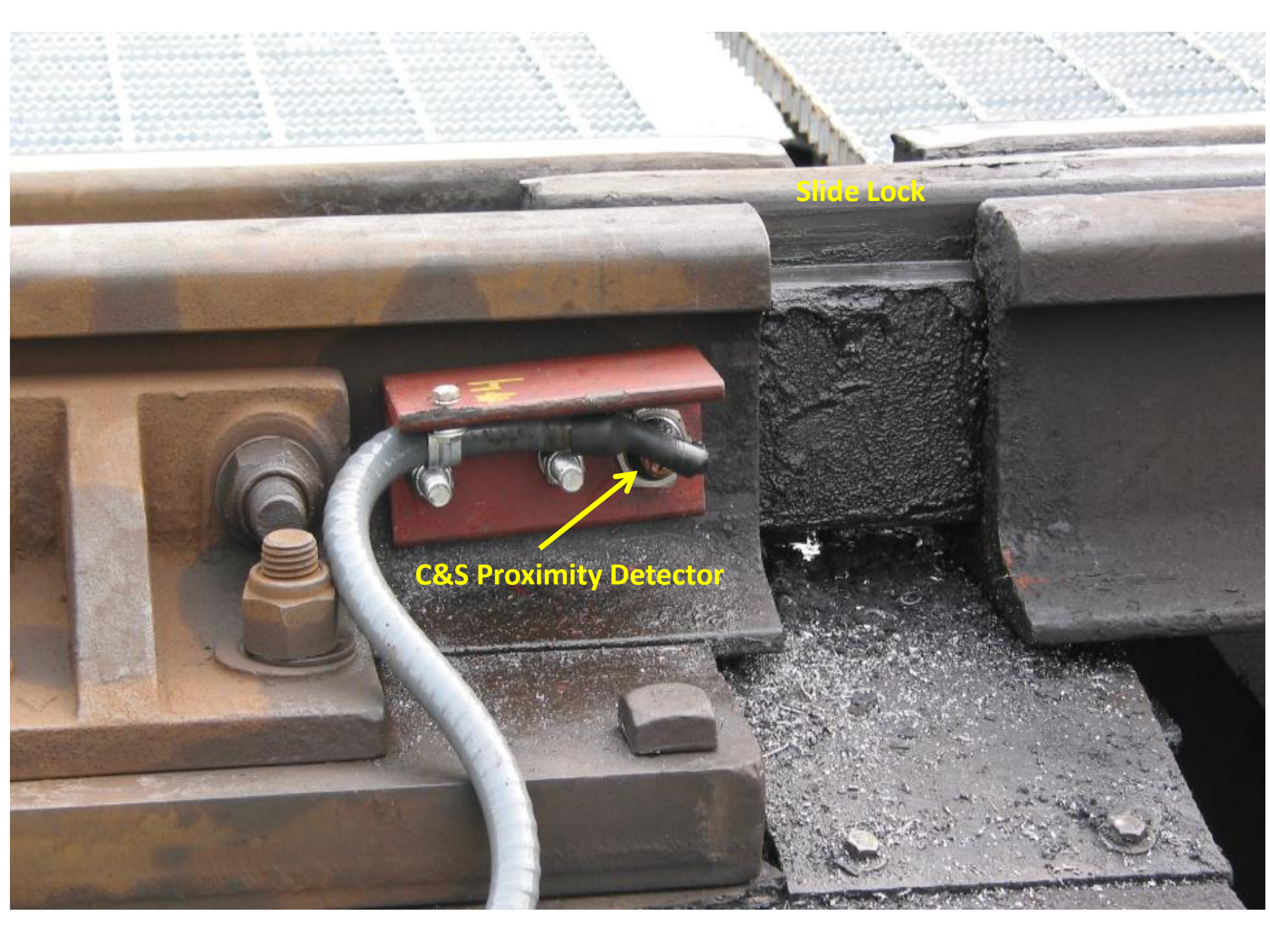


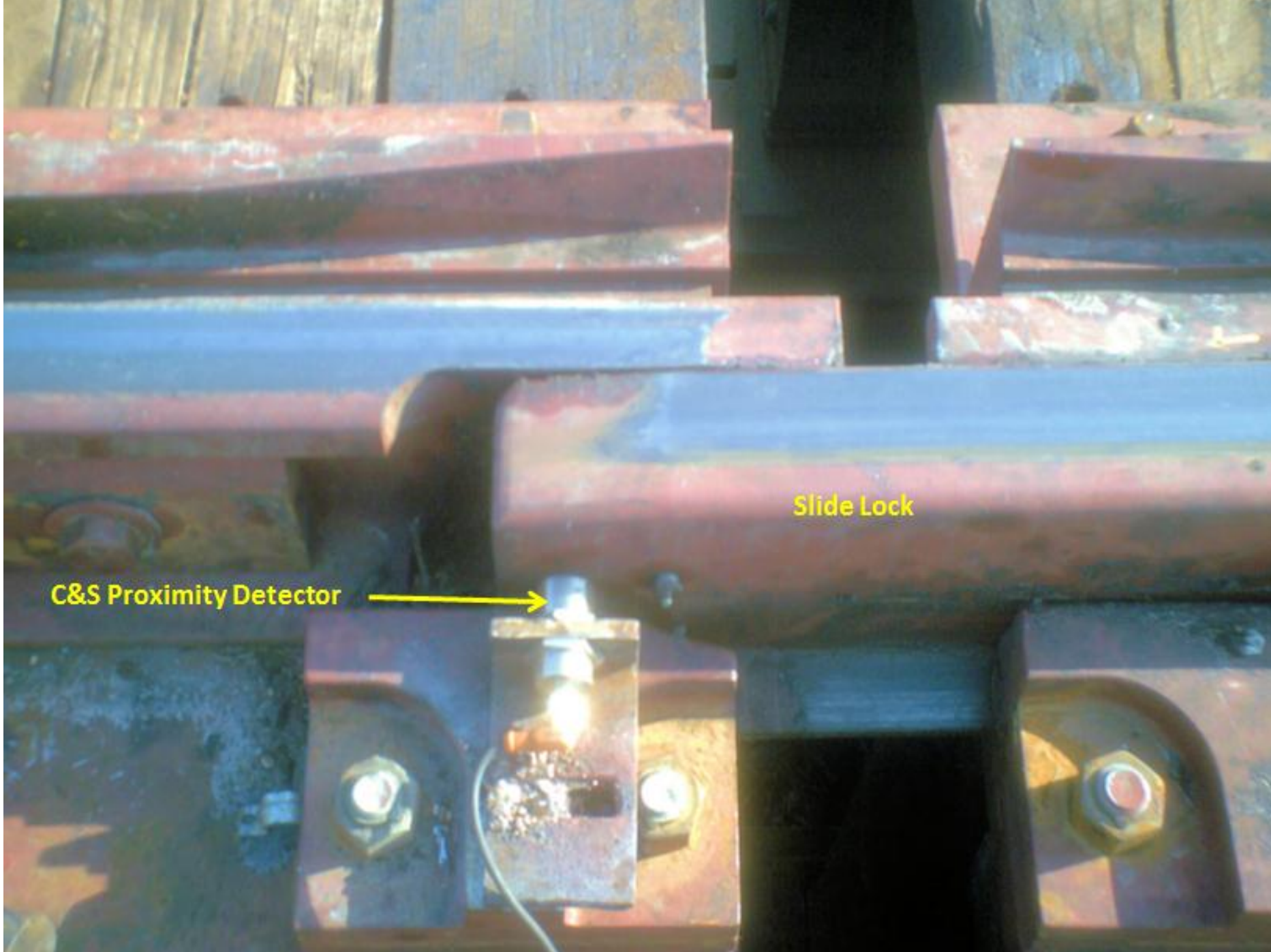
Slide Locks

Drive motors

Slide Lock

C&S Proximity Detector





Slide Lock

C&S Proximity Detector

