



NATIONAL TRANSPORTATION SAFETY BOARD - **Public Hearing**

Conrail Derailment in Paulsboro, NJ with Vinyl Chloride Release

GROUP	5
EXHIBIT	
AC	

Agency / Organization

US Coast Guard

Title

Captain Moore Presentation Slides

East Jefferson Street Bridge Train Derailment Paulsboro, NJ

Type-2 HAZMAT Incident

***Railroad Derailment into
Navigable Waterway**

November 30-December 17, 2012

**Federal On-Scene Coordinator
CAPT Kathy Moore, USCG**



Incident Overview

- 7 AM on Friday 30 Nov
- Train tracks bisect Paulsboro, a 6,200 resident boro, between PBF Paulsboro Refinery and NuStar
- Kids walk to school
- President Obama in Philly at 11 AM
- Firefighters, HAZMAT, Refinery workers first on scene
- 22 initially taken to local hospitals



Rail Car Product Overview

4 Vinyl Chloride Cars
1 is breached

1 Ethanol Car

1 Lumber Car

1 Plastic Pellets Car

Sheen is hydraulic oil



United States Coast Guard Sector Delaware Bay



Unified Command



US Coast Guard
Coast Guard Sector Delaware Bay
Federal On-Scene Coordinator



**Consolidated Rail Corporation
(CONRAIL)**
Responsible Party



**NJ Department of
Environmental Protection (DEP)**
State On-Scene Coordinator



Paulsboro Fire Department



**NJ Office of Emergency
Management (OEM)**

United States Coast Guard Sector Delaware Bay



Phased Response

Phase 1: Breached
Railcar

Phase 2: Site
Preparation

Phase 3: Railcar
Removal

Phase 4: ReRail &
Track Repair



Response Operations Phase I: Breached Car

- Penetrated mid body with bolster of gray tankcar
- ~4,000 gallons of VC liquid remains: vaporizing
- 18 X 36 in. ragged hole is only access
- Tank car end is in the water



Public Safety Concerns

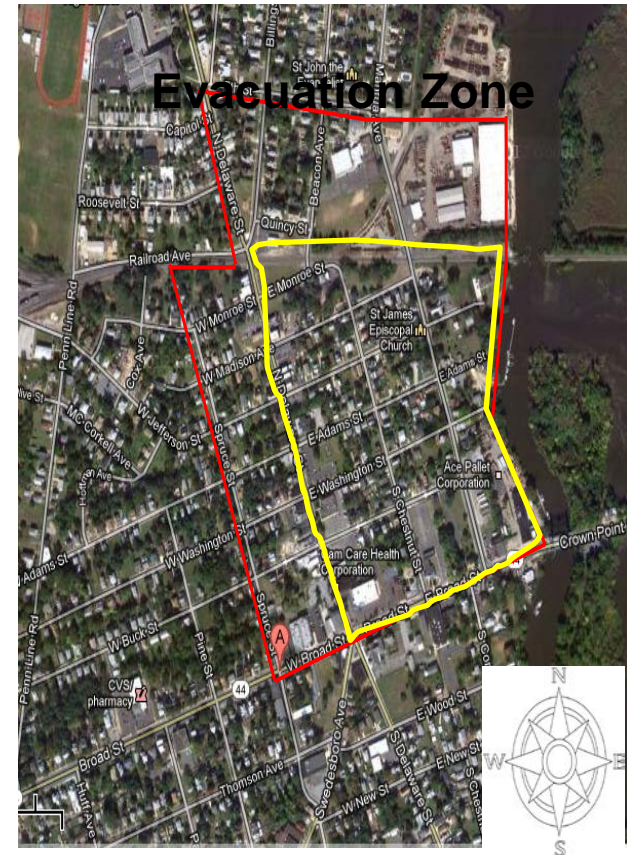
2 Stage Evacuation:

11/30: 12 blocks adjacent to site
48 homes, 3 businesses
Schools closed

12/4: Evacuation expanded
260 homes; 640 residents
9 businesses

Security

- Site Security
- Evacuation Zone Security



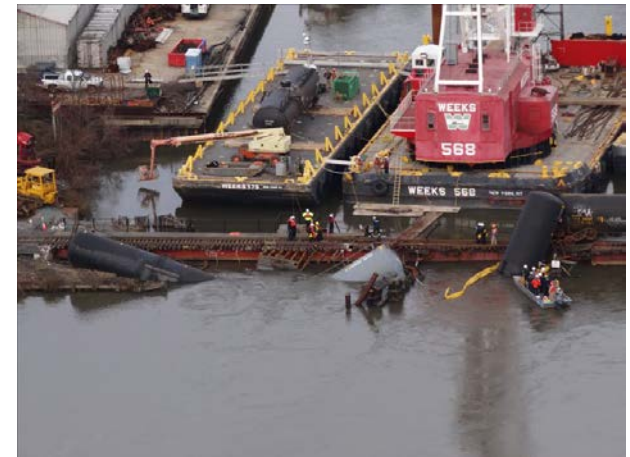
Response Operations Phase II: Site Preparations

- Operation: Home Safely
- Remove bridge dolphins & fenders
- Remove A-Frame
- Remove lumber & pellet cars



Response Operations Phase III: Railcar Removal

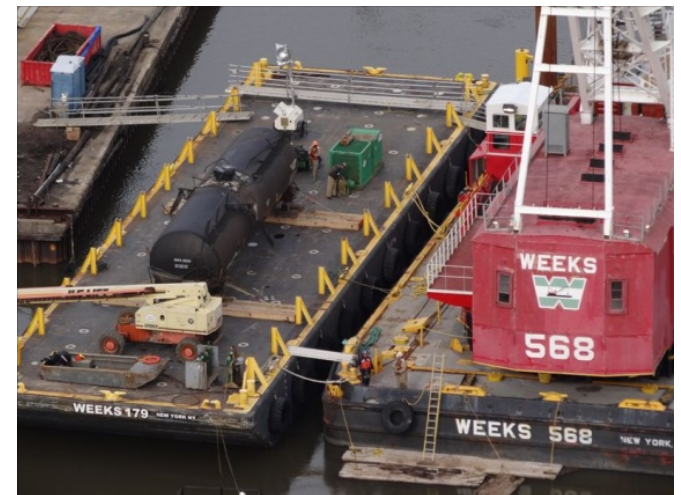
- Underwater Rigging
- Delicate Crane Operations
- Railcars lifted w/product inside



United States Coast Guard Sector Delaware Bay

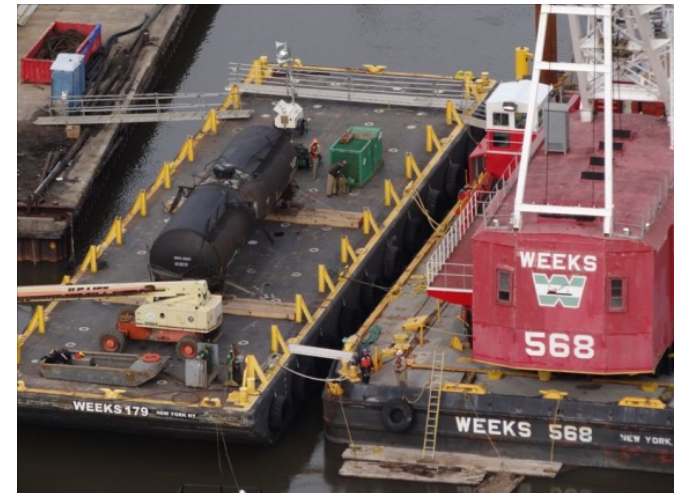


Response Operations Phase III

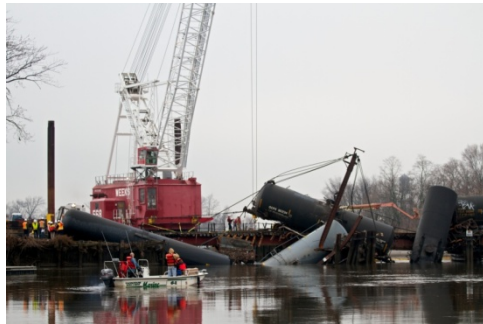


Response Operations Phase IV: ReRail Cars & Track Repair

- Crane lifts rerail cars in daylight
- Track repair at night



United States Coast Guard Sector Delaware Bay



Questions?

