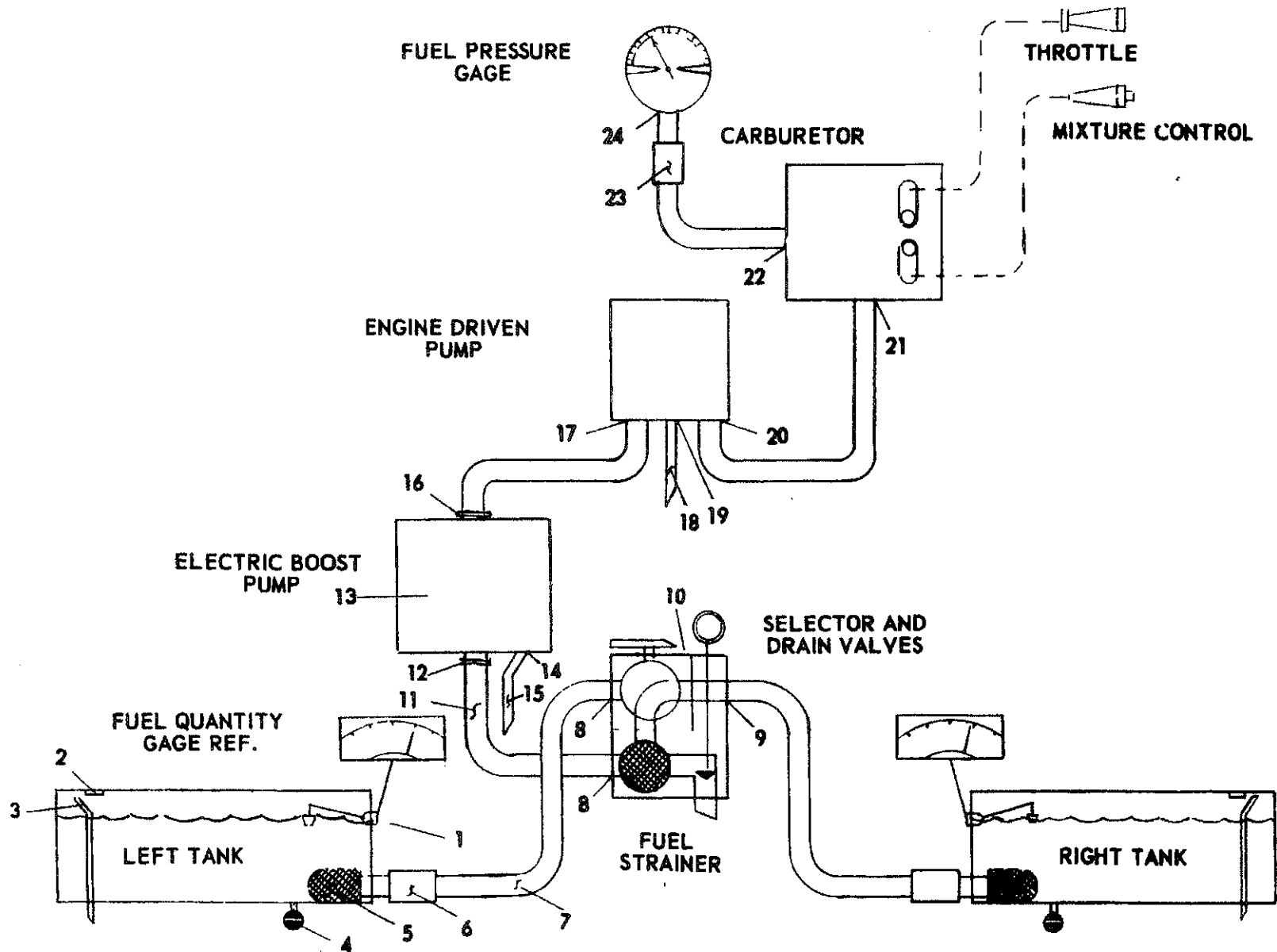


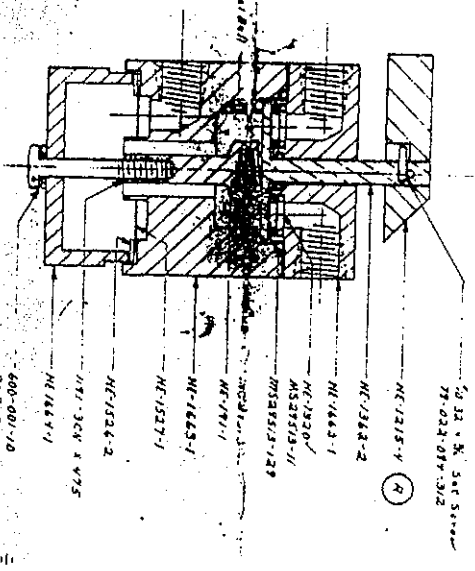
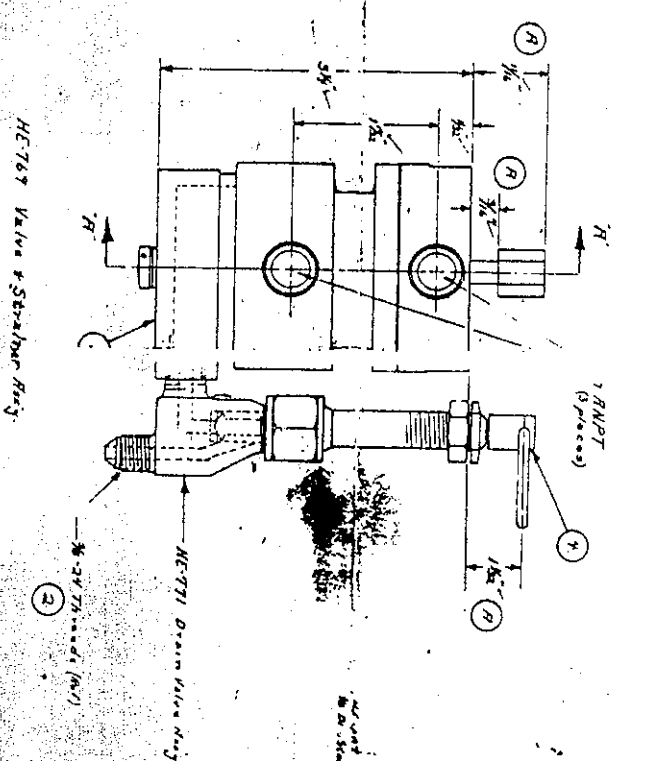
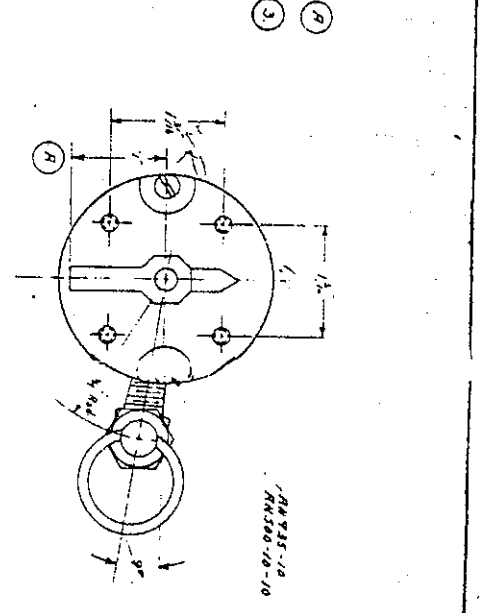
FIG. 51 - FUEL SYSTEM SCHEMATIC, M-20C & D (2623C & On; 201D & On)



No.	Name	Material	Finish
1	HE-1687-1 Body	Aluminum 6061	Anodize
1	HE-1687-2 Steamers Body	Aluminum 6061	Anodize
1	HE-1687-3 Seal Ring	Aluminum 6061	Anodize
1	HE-1687-4 Nozzle Assy	Aluminum 6061	Anodize
1	HE-1687-5 Head	Aluminum 6061	Anodize
1	HE-1687-6 Seal	Aluminum 6061	Anodize
1	HE-1687-7 Seal	Aluminum 6061	Anodize
1	HE-1687-8 Drain Valve Assy	Aluminum 6061	Anodize
1	HE-1687-9 Seal	Aluminum 6061	Anodize
1	HE-1687-10 Seal	Aluminum 6061	Anodize
1	HE-1687-11 Seal	Aluminum 6061	Anodize
1	HE-1687-12 Seal	Aluminum 6061	Anodize
1	HE-1687-13 Seal	Aluminum 6061	Anodize
1	HE-1687-14 Seal	Aluminum 6061	Anodize
1	HE-1687-15 Seal	Aluminum 6061	Anodize
1	HE-1687-16 Seal	Aluminum 6061	Anodize
1	HE-1687-17 Seal	Aluminum 6061	Anodize
1	HE-1687-18 Seal	Aluminum 6061	Anodize
1	HE-1687-19 Seal	Aluminum 6061	Anodize
1	HE-1687-20 Seal	Aluminum 6061	Anodize
1	HE-1687-21 Seal	Aluminum 6061	Anodize
1	HE-1687-22 Seal	Aluminum 6061	Anodize
1	HE-1687-23 Seal	Aluminum 6061	Anodize
1	HE-1687-24 Seal	Aluminum 6061	Anodize
1	HE-1687-25 Seal	Aluminum 6061	Anodize

**Test Procedure:**

1. With valve in closed position and pump off, apply 50 psig air pressure to the Body ports.
2. Visual leakage check.
3. Repeat same test and HE-1687 Drain Valve Assy. Body ports for air pressure in the Steamer Body and for air pressure in the Drain Valve Body in same order.



1. The Drain Valve Ring assembly is standard on the shaft. For removal pull ring assembly up and over shaft.
  2. Steamer body maintenance is 150 pressure.
  3. 3/4" hole in Drain Valve opening. For ring base plain diameter.
  4. In the opening on pump. Torque the bolt to 25 ft. lbs.
- Modes:

REV	DESCRIPTION	DATE
1		
2		
3		
4		
5		
6		
7		
8		
9		
10		

DESIGNED BY: H.A.E.	DATE: 4-17-68
DRAWN BY: HIRCRAFT, CO.	
CHECKED BY: HIRCRAFT, CO.	
APPROVED BY: HIRCRAFT, CO.	
DATE: 4-17-68	
VALVE STEAMER BODY	
VALVE STEAMER BODY	
VALVE STEAMER BODY	

PART NAME: VALVE & STEAMER RING	PART NO: HE-769
REV: R1	