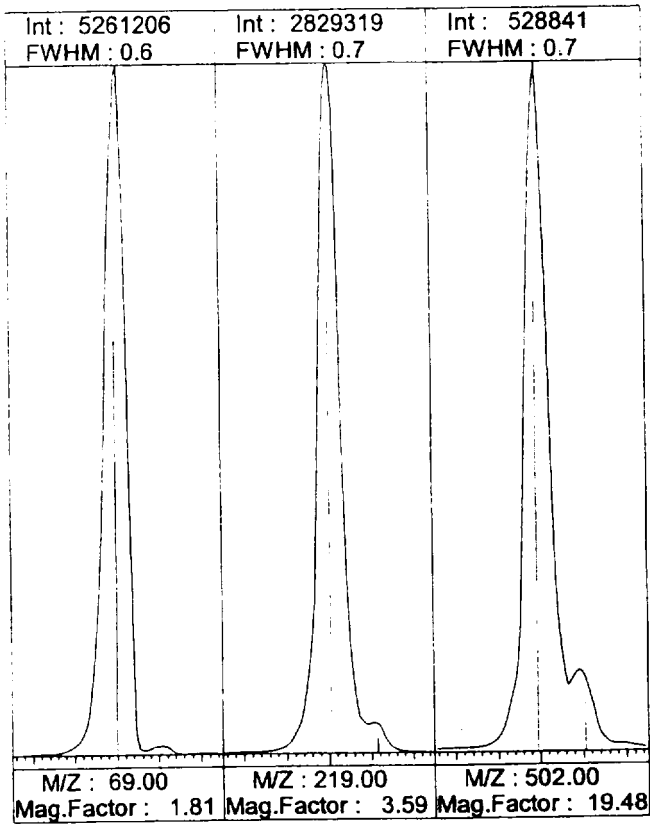


ATTACHMENT 4

GC-MS TUNING PROFILE
AMERICAN UNIVERSITY

*** Tuning Report *** File = EI.TUN 00/01/21 11:07:03



Ionization Method EI

Ext. Lens -1.7 V
Focus Lens1 -49.5 V
Focus Lens2 -6.0 V
Ent. Lens -29.5 V

RF gain 5175
RF offset 4830

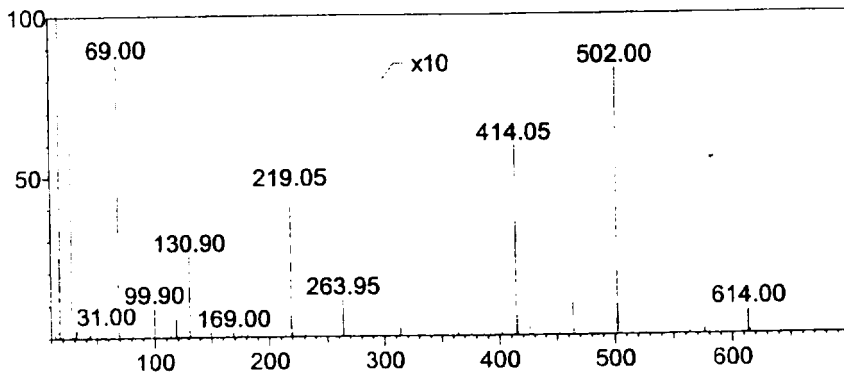
Prerod -8.0 V
Mainrod -8.0 V

Deflector 0.0 V
Det.Gain 0.85 kV

I/F Temp. 226 °C
Filament # 1

PG Vacuum 2.2 Pa
Column Diameter 0.25 mm
Column Length 30.0 m
Column Temp. 100 °C
Column Pressure 53.0 kPa

*** Spectrum ***
Scan Range : 10 - 700
Base Peak : 18.05 (6139555)



*** Mass Pattern Adjustment ***

