



## Frederick Municipal Airport

### Quiet Departure Procedure Runway 23 and Runway 30

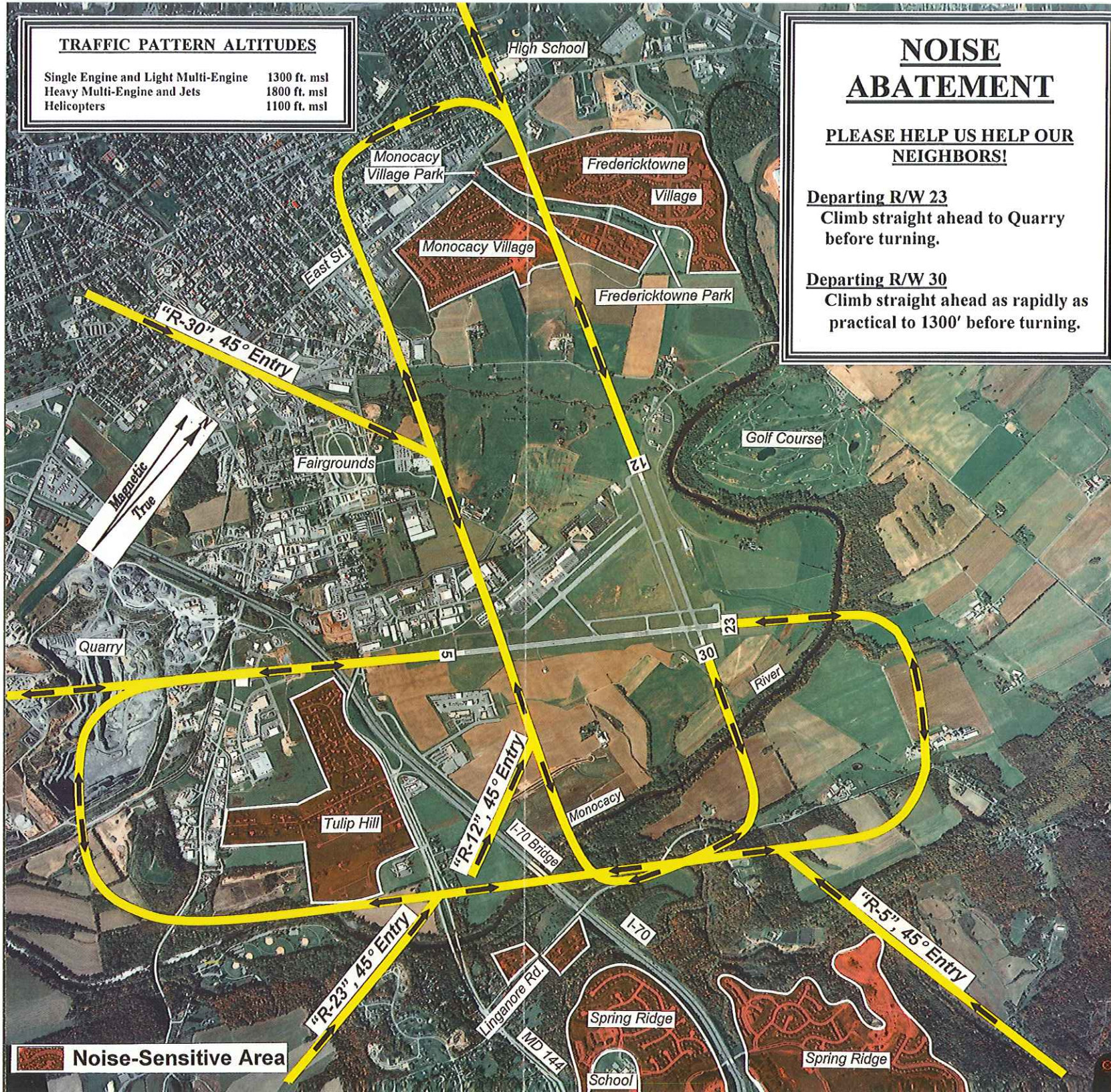
#### Mission Statement:

"Our Airport is a community facility surrounded by Residential development. In consideration of our neighbors, we, as pilots, are obligated to fly safely with minimal noise impact to the community on the ground. Practicing the quiet departure procedures illustrated herein will reduce disturbances to our neighbors and create a more friendly flying atmosphere at the Airport while maintaining a safe flying environment for everyone."

#### Important Note to Pilots:

You are to avoid overflight below pattern altitudes of all identified noise-sensitive areas to the maximum extent possible. We urge your cooperation and thank you for helping us be a "good neighbor"!

Failure to routinely comply with the procedures contained herein may result in action by the City of Frederick



## DEPARTURE INSTRUCTIONS

- Runway 5:** Right traffic pattern  
Avoid overflight of residential areas.
- Runway 23:** Left traffic pattern  
Climb straight ahead to quarry before turning.
- Runway 12:** Right traffic pattern  
Avoid overflight of residential areas.
- Runway 30:** Left traffic pattern  
Climb straight ahead as rapidly as practical to 1300 feet MSL before turning. Avoid overflight of residential areas west of airport. If practical, turn left prior to residential areas, otherwise proceed over park (tree area) between Monacacy Village and Fredericktowne Village, then make left crosswind over East Street.

## ARRIVAL INSTRUCTIONS

- Runway 5:** Right traffic pattern  
Turn base to final over quarry in order to avoid overflight of Tulip Hill residential area.
- Runway 23:** Left traffic pattern  
Avoid low altitude overflight of residential areas.
- Runway 12:** Right traffic pattern  
Avoid low altitude overflight of residential areas west of airport. If practical, avoid major power setting changes on final approach.
- Runway 30:** Left traffic pattern  
If practical, remain north of I-70 to avoid low altitude overflight of residences east of the airport.

## GENERAL INSTRUCTIONS

- BE PREPARED – USE CONCISE ANNOUNCEMENT PROCEDURES!
- Piston aircraft maintain 1300 ft. MSL as long as possible
- When practicing engine-out procedures, notify UNICOM CTAF 122.725.

For further information about our airport or about our noise abatement procedures, contact:

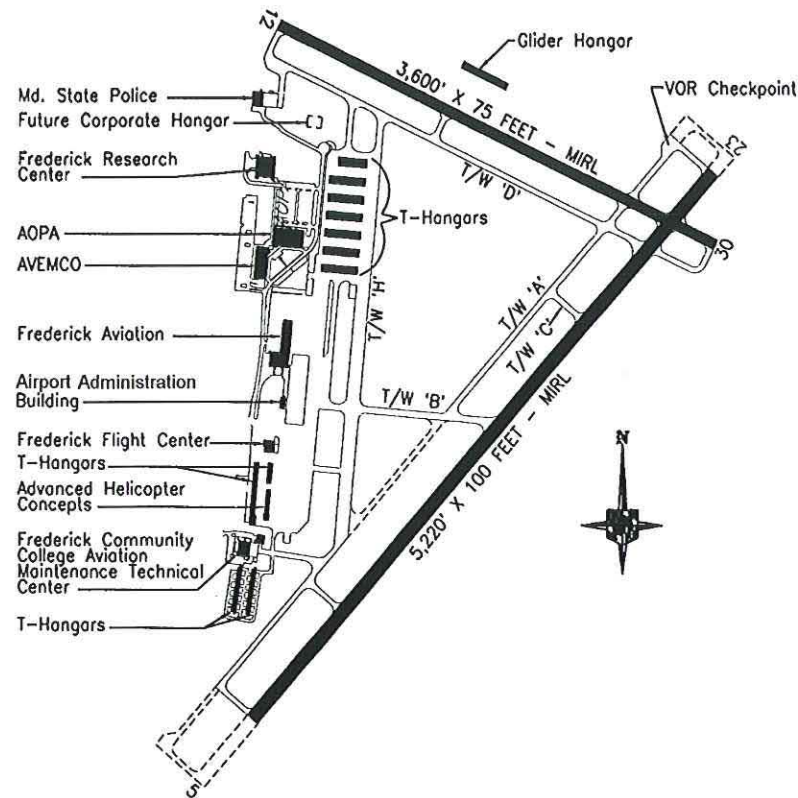
*Airport Manager's Office*

Frederick, MD 21701

( ) x

# Frederick Municipal Airport

## FACILITIES LAYOUT



## AIRPORT INFORMATION

<b>Elevation</b>	304' msl.
<b>Location</b>	N 39° 25.05' W 77° 22.46'
<b>UNICOM / CTAF</b>	122.725
<b>RWY 5-23</b>	5,220' x 100'
<b>RWY 12-30</b>	3,600' x 75'
<b>ILS</b>	Runway 23
<b>AWOS</b>	Phone - (301) 694-1457, Freq. - 124.875
<b>Clearance Delivery</b>	126.9
<b>BWI Approach</b>	126.75
<b>Fuel / OPS Request</b>	130.275

# Frederick Municipal Airport

## LOCAL PHONE NUMBERS

Fire/Police//Rescue  
Airport Manager

911

### FIXED BASE OPERATOR / SPECIAL AIR SERVICE OPERATOR

Advanced Helicopter Concepts – SASO  
Frederick Aviation, Inc. – FBO  
Avionics Shop  
Customer Service & Fuel Requests  
Maintenance Shop  
Parts Department

Frederick Flight Center  
Majestic Air Service – SASO

### POLICE SERVICES

Frederick City Police  
Frederick County Sheriff  
Maryland State Police (Barracks)

MSP-Helicopter Medivac Unit  
Fire Department - United Co. No. 3

### OTHER AIRPORT BUSINESSES

Airways Inn  
AOPA

AVEMCO  
Frederick Community College  
School of Aviation Technology

RC&A

### RENTAL CARS

Budget  
Enterprise  
Frederick Rent-A-Honda  
Hertz

### Taxi Services

Bowie Cab Service  
City Cab Service