

WAAS CH 56320 W14A	APP CRS 139°	Rwy Idg TDZE Apt Elev	6400 49 53
--	------------------------	-----------------------------	---------------------------------------

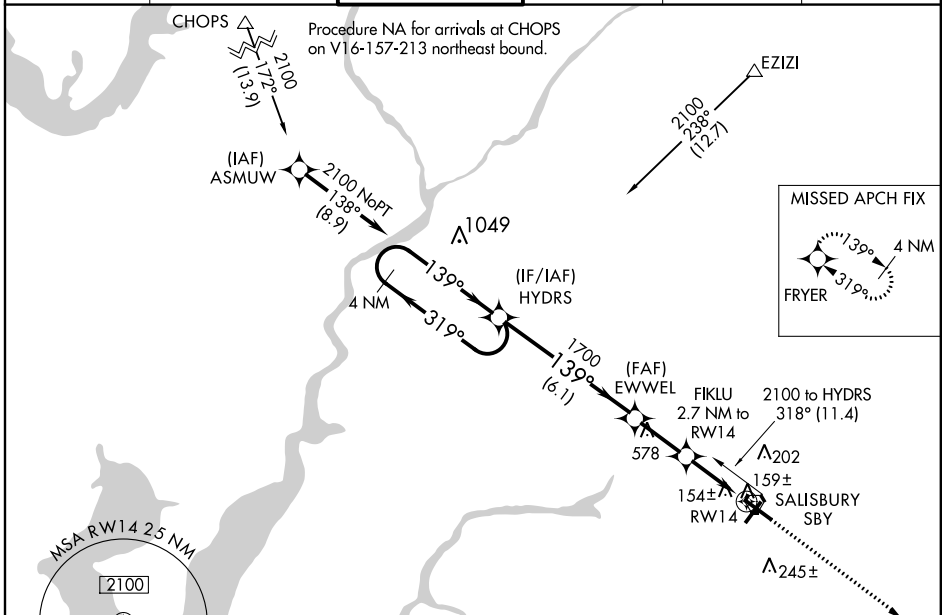
RNAV (GPS) RWY 14

SALISBURY-OCEAN CITY WICOMICO RGNL (SBY)

⚠ Baro-VNAV NA when using Georgetown altimeter setting. For uncompensated Baro-VNAV systems, LNAV/VNAV NA below -15°C (5°F) or above 48°C (118°F). DME/DME RNP-0.3 NA. Visibility reduction by helicopters NA. When local altimeter setting not received use Georgetown altimeter setting, increase all DA 52 feet and all MDA 60 feet; increase LPV all Cats and LNAV Cats C/D visibility ¼ mile.

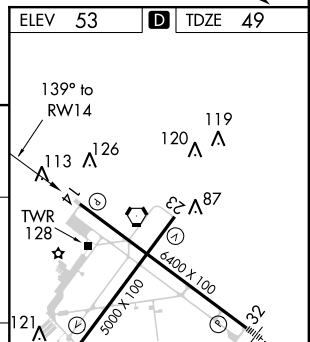
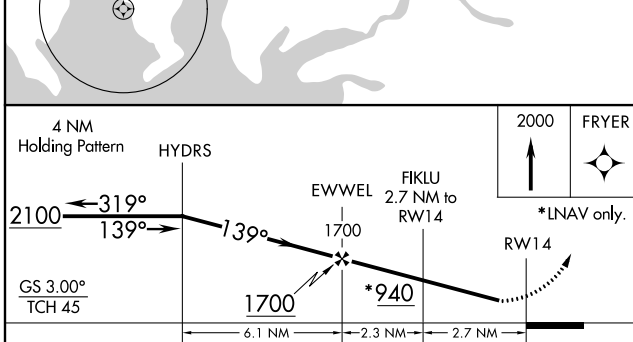
MISSED APPROACH:
Climb to 2000 direct
FRYER and hold.

ASOS 118.325	PATUXENT APP CON * 127.95 314.0	SALISBURY TOWER * 119.425 (CTAF) 0	GND CON 123.775	CLNL DEL * 123.775	UNICOM 122.95
------------------------	---	---	---------------------------	------------------------------	-------------------------



NE-3, 19 SEP 2013 to 17 OCT 2013

NE-3, 19 SEP 2013 to 17 OCT 2013



CATEGORY	A	B	C	D
LPV DA		355-1	306 (400-1)	
LNAV/VNAV DA		453-1½	404 (400-1½)	
LNAV MDA	420-1	371 (400-1)		420-1¼ 371 (400-1¼)
CIRCLING	480-1 427 (500-1)	520-1 467 (500-1)	520-1½ 467 (500-1½)	620-2 567 (600-2)

ELEV 53	D TDZE 49
---------	------------------

REIL Rwy 5, 14 and 23 **0**
MIRL Rwy 5-23 **0**
HIRL Rwy 14-32 **0**

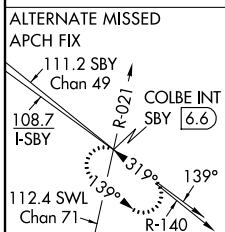
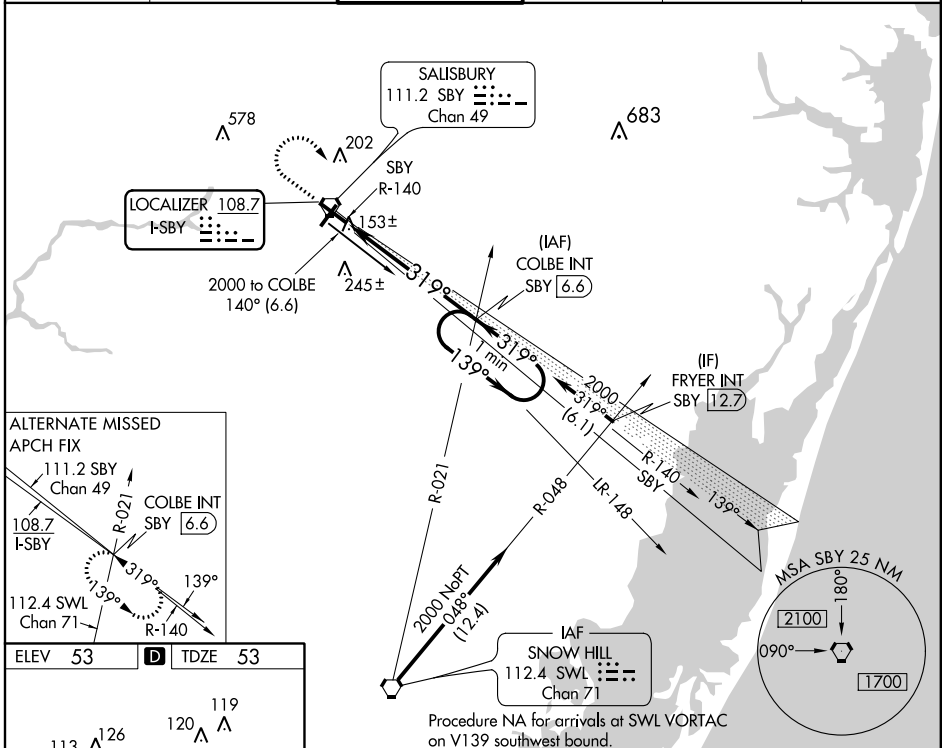
LOC I-SBY 108.7	APP CRS 319°	Rwy Idg TDZE Apt Elev	6400 53 53
---------------------------	------------------------	-----------------------------	---------------------------------------

ILS or LOC RWY 32
SALISBURY-OCEAN CITY WICOMICO RGNL (SBY)

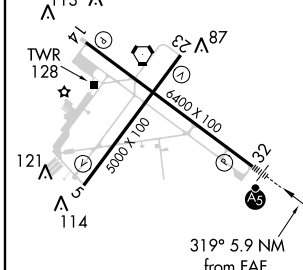
⚠ When local altimeter setting not received, use Georgetown altimeter setting and increase DA 52 feet and all MDA 60 feet, and increase S-LOC 32 Cat C visibility ¼ mile.

MALSR MISSED APPROACH: Climb to 700 then climbing right turn to 2000 on heading 170° and on SBY VORTAC R-140 to COLBE INT/SBY VORTAC 6.6 DME and hold.

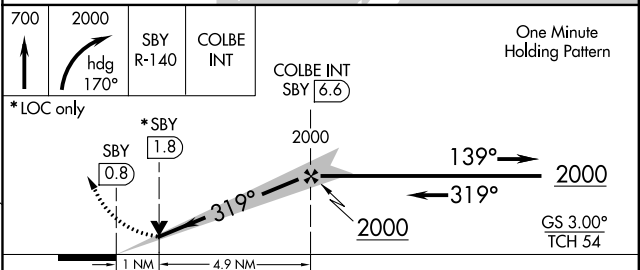
ASOS 118.325	PATUXENT APP CON ★ 127.95 314.0	SALISBURY TOWER ★ 119.425 (CTAF)	GND CON 123.775	CLNL DEL ★ 123.775	UNICOM 122.95
------------------------	---	--	---------------------------	------------------------------	-------------------------



ELEV 53	D	TDZE 53
---------	----------	---------



REIL Rwys 5, 14 and 23					
MIRL Rwy 5-23					
HIRL Rwy 14-32					
FAF to MAP 5.9 NM					
Knots	60	90	120	150	180
Min:Sec	5:54	3:56	2:57	2:22	1:58



CATEGORY	A	B	C	D
S-ILS 32	253-½ 200 (200-½)			
S-LOC 32	420-½	367 (400-½)	420-¾ 367 (400-¾)	
CIRCLING	480-1 427 (500-1)	520-1 467 (500-1)	520-1½ 467 (500-1½)	620-2 567 (600-2)

NE-3, 19 SEP 2013 to 17 OCT 2013

NE-3, 19 SEP 2013 to 17 OCT 2013

RNAV (GPS) RWY 22

GEORGETOWN / SUSSEX COUNTY (GED)

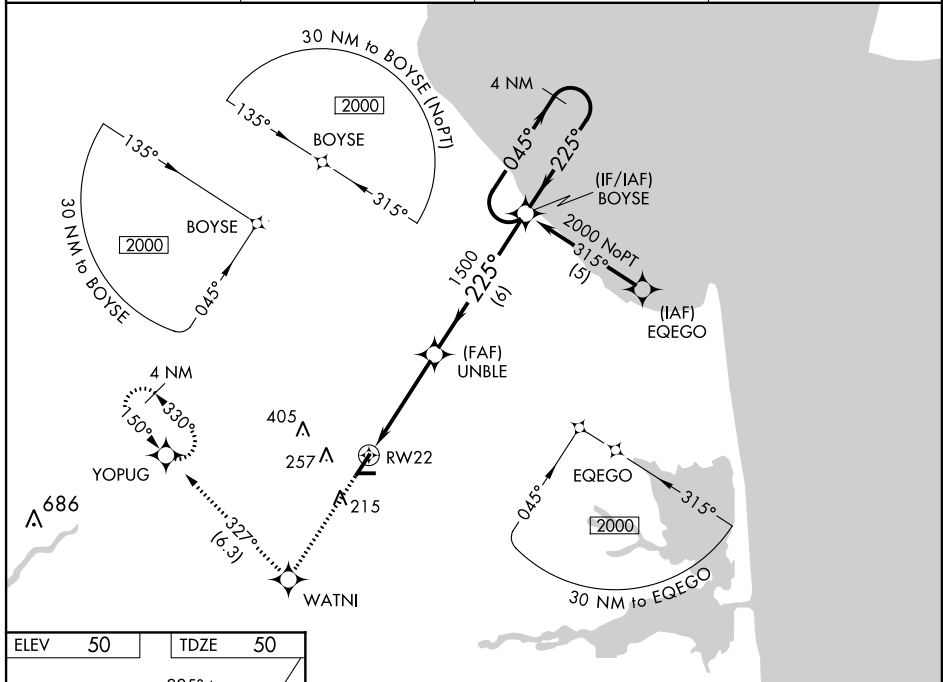
WAAS CH 60921 W22A	APP CRS 225°	Rwy Idg 5000 TDZE 50 Apt Elev 50
--	------------------------	---

▼ DME/DME RNP-0.3 NA. Baro-VNAV NA below -15°C (5°F). If local altimeter setting not received, use Salisbury-Ocean City Wicomico Rgnl altimeter setting and increase all DAs/MDAs 60 feet. Baro-VNAV NA when using Salisbury-Ocean City Wicomico Rgnl altimeter setting.

▲

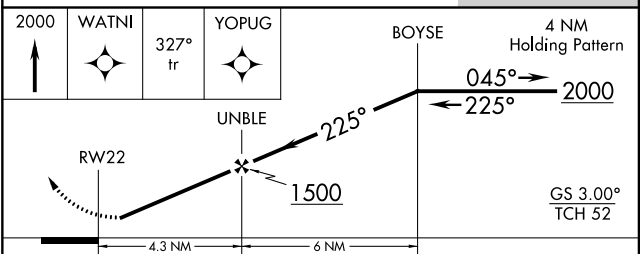
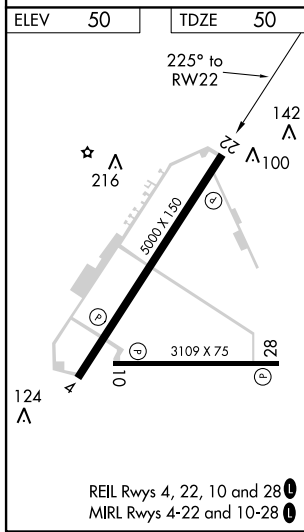
MISSED APPROACH: Climb to 2000 direct WATNI and via 327° track to YOPUG and hold.

ASOS 118.375	DOVER APP CON 132.425 257.875	CLNC DEL 125.55	UNICOM 123.0 (CTAF) ①
------------------------	---	---------------------------	--



NE-3, 19 SEP 2013 to 17 OCT 2013

NE-3, 19 SEP 2013 to 17 OCT 2013



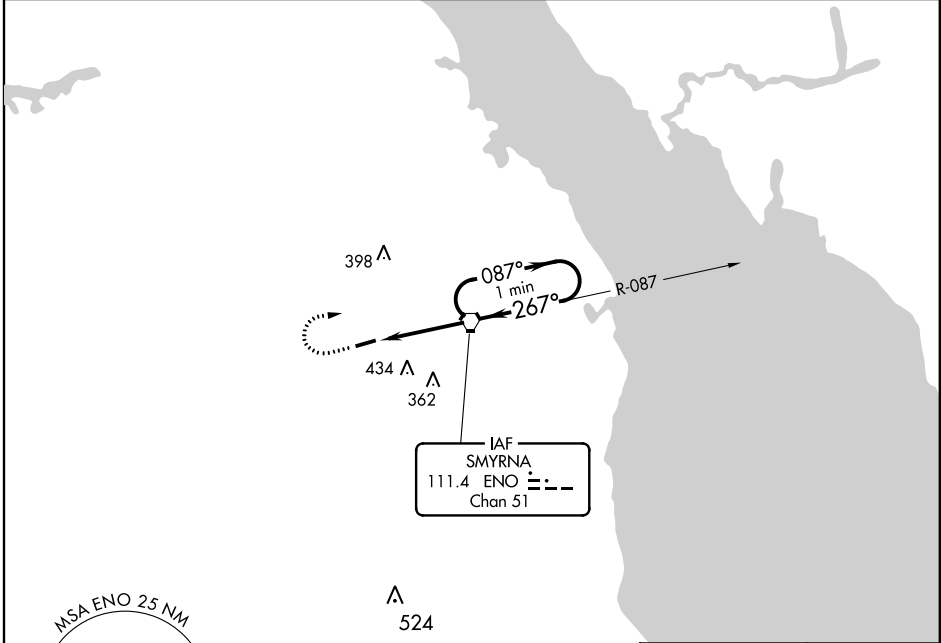
CATEGORY	A	B	C	D
LPV DA	360-1 310 (400-1)			
LNAV/VNAV DA	400-1¼ 350 (400-1¼)			
LNAV MDA	480-1 430 (500-1)	480-1¼ 430 (500-1¼)	480-1½ 430 (500-1½)	
CIRCLING	560-1¼ 510 (600-1¼)	600-1½ 550 (600-1½)	600-2 550 (600-2)	

VORTAC ENO 111.4 Chan 51	APP CRS 267°	Rwy Idg 3232 THRE 43 Apt Elev 55
--	------------------------	---

VOR RWY 27
DOVER/ DELAWARE AIRPARK (33N)

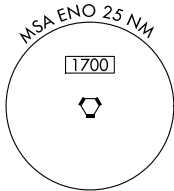
▼ Use Dover AFB altimeter setting. Visibility reduction by helicopters NA. Procedure NA at night.
▲ NA MISSED APPROACH: Climb to 1000 then climbing right turn to 1500 direct ENO VORTAC and hold.

DOVER APP CON 132.425 257.875	CLNC DEL 125.55	UNICOM 123.0 (CTAF) ①
---	---------------------------	--

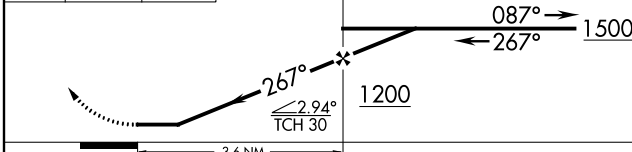


NE-3, 19 SEP 2013 to 17 OCT 2013

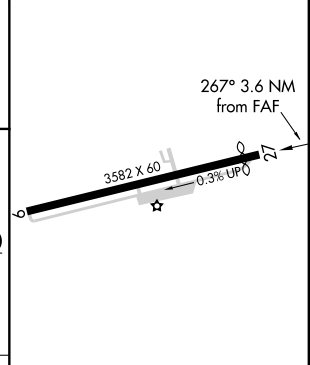
NE-3, 19 SEP 2013 to 17 OCT 2013



1000 ↑	1500 ↷	ENO ②
-----------	-----------	----------



ELEV 55	D	THRE 43
---------	----------	---------



CATEGORY	A	B	C	D
S-27	520-1	477 (500-1)	520-1 3/8 477 (500-1 3/8)	NA
CIRCLING	580-1	525 (600-1)	820-2 1/4 765 (800-2 1/4)	NA

MIRL Rwy 9-27 ①					
FAF to MAP 3.6 NM					
Knots	60	90	120	150	180
Min:Sec	3:36	2:24	1:48	1:26	1:12