

Quick Reference Handbook Gulfstream G150

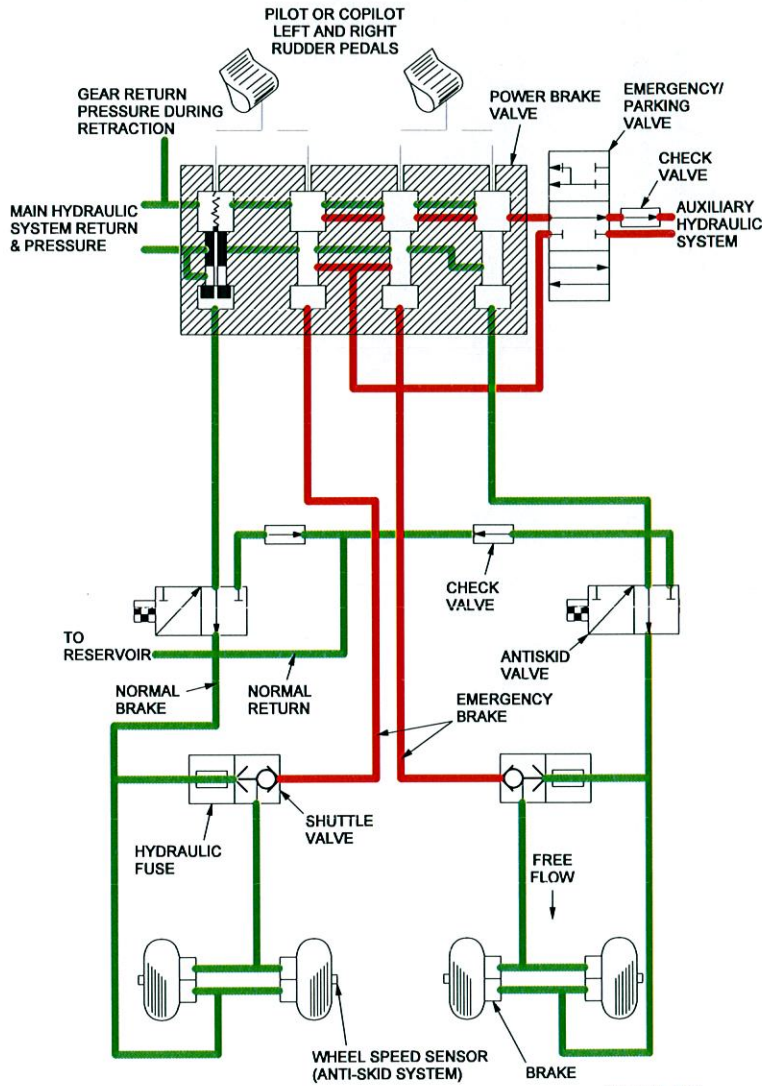
Brakes / Anti-Skid Index

Brakes / Anti-Skid System Diagram.....EB-2
Brake Fire During Taxi..... EB-3
Anti-Skid System.....EB-3
Emergency Brake Operation.....EB-4

Gulfstream G150 Quick Reference Handbook

Brakes / Anti-Skid System Diagram

AFM Section VII



46750H00

Quick Reference Handbook **Gulfstream G150**

Brake Fire During Taxi

AFM Section II

1. Control Tower ADVISE
 2. Aircraft IMMEDIATE FULL STOP
NOTE: Use nosewheel steering and serviceable brake.
 3. Engines SHUT DOWN
 4. BATT POWER Switch OFF
 5. Passengers EVACUATE
(See **Passenger Evacuation**, page EI-3.)
- WARNING:** DO NOT USE EXTINGUISHER DIRECTLY ON HOT WHEEL AS SUDDEN CHILLING MAY CAUSE IT TO SHATTER. STAND IN FRONT OR BEHIND WHEEL ONLY AS CLOSE AS NECESSARY.
6. Fire EXTINGUISH

END

Anti-Skid System

AFM Section III



Steady illumination of **ANTI-SKID OFF** annunciator (or both **HYD PUMP LOW** (L/R) messages) indicates failure of the anti-skid system.

ANTI-SKID OFF annunciator illuminates before landing:

1. ANTI-SKID Pushbutton CHECK ON

If ANTI-SKID annunciator remains illuminated:

2. ANTI-SKID Pushbutton DEPRESS (OFF)
3. Landing Distance CHECK
(See pages V-286 thru V-315 in the **Performance** Section of the AFM.)
4. Wheel Brakes APPLY CAUTIOUSLY
(Consider runway distance and condition.)

If ANTI-SKID OFF annunciator illuminates during landing roll for more than one second:

1. Wheel Brakes RELEASE

Continued on next page →

Gulfstream G150 Quick Reference Handbook

Anti-Skid System, ctd...

AFM Section III

If ANTI-SKID OFF annunciator goes out:

2. Wheel Brakes.....APPLY (AS REQUIRED)

If ANTI-SKID OFF annunciator remains illuminated:

3. ANTI-SKID Pushbutton.....DEPRESS (OFF)

CAUTION: WHEN ONE OF THE ANTI-SKID OFF ANNUNCIATORS ILLUMINATES, ANTI-SKID MUST BE TURNED OFF TO PREVENT POSSIBLE ASYMMETRIC BRAKING.

4. Wheel Brakes.....APPLY CAUTIOUSLY
(Consider runway distance and condition.)

If brakes do not respond:

5. EMERG BRAKE Lever.....EMERG
6. Wheel Brakes.....APPLY CAUTIOUSLY

END

Emergency Brake Operation

AFM Section III

Failure of main hydraulic system or normal brake system requires emergency brake operation by placing EMERG BRAKE lever in EMERG position and using the brake pedals.

NOTE: To calculate landing distance, increase distances in **Unfactored Landing Distance From 50 Feet** tables, pages V-286 thru V-315 in the **Performance** section of the AFM by 100%, a factor that includes allowances for reduced braking efficiency and for anti-skid not being available.

On final approach to landing:

1. Brake Lever.....EMERG
2. Wheel Brakes.....APPLY CAUTIOUSLY
(Consider runway distance and condition.)

CAUTION: ANTI-SKID SYSTEM IS NOT AVAILABLE WHEN MAIN HYDRAULIC SYSTEM FAILS. IN THIS CONDITION, ANTI-SKID OFF ANNUNCIATOR WILL NOT ILLUMINATE.

END