



NATIONAL TRANSPORTATION SAFETY BOARD
Investigative Hearing

Washington Metropolitan Area Transit Authority Metrorail train 302 that encountered heavy smoke in the tunnel between the L'Enfant Plaza Station and the Potomac River Bridge on January 12, 2015

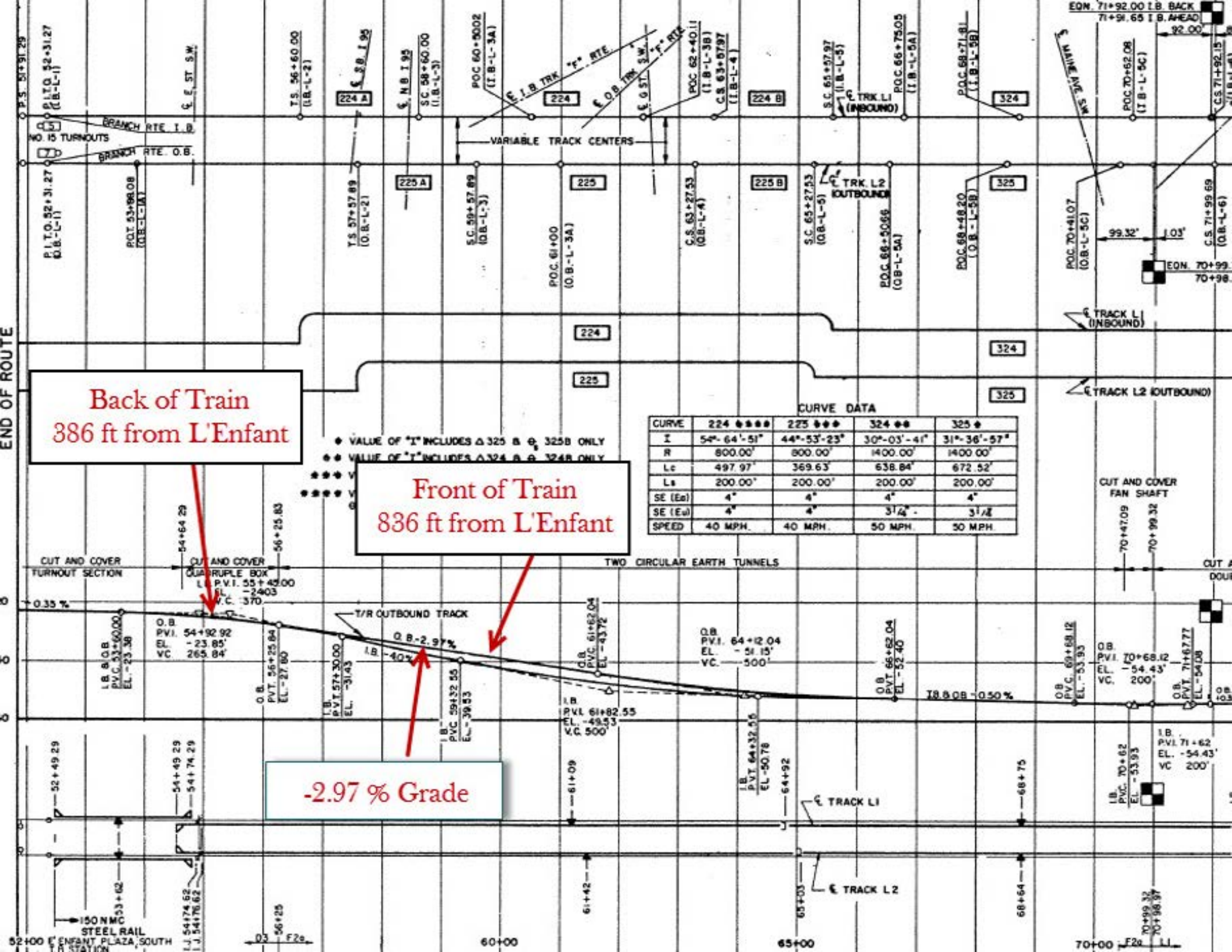
GROUP	H
EXHIBIT	
40	

Agency / Organization

Washington Metropolitan Area Transit Authority

Title

L Line Section Diagram



Back of Train
386 ft from L'Enfant

Front of Train
836 ft from L'Enfant

-2.97% Grade

CURVE DATA

CURVE	224	225	324	325
I	54°-64'-51"	44°-53'-23"	30°-03'-41"	31°-36'-57"
R	800.00'	800.00'	1400.00'	1400.00'
Lc	497.97'	369.63'	638.84'	672.52'
La	200.00'	200.00'	200.00'	200.00'
SE (Ea)	4°	4°	4°	4°
SE (Ea)	4°	4°	3 1/4°	3 1/4°
SPEED	40 MPH.	40 MPH.	50 MPH.	50 MPH.

- ◆ VALUE OF "I" INCLUDES Δ 325 B & 325B ONLY
- ◆◆ VALUE OF "I" INCLUDES Δ 324 B & 324B ONLY
- ◆◆◆ V
- ◆◆◆ V
- ◆◆◆ V
- ◆◆◆ V