

Docket No. SA-534

Exhibit No. 2-CL

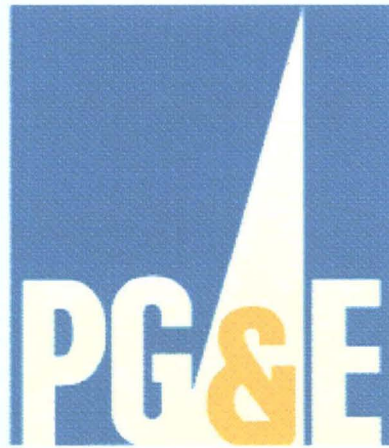
NATIONAL TRANSPORTATION SAFETY BOARD

Washington, D.C.

EXCERPTS FROM PG&E CAMERA
INSPECTION OF LINE 132, SEGMENT 180

(47 Pages)

Pacific Gas & Electric Company



Internal Pipeline Video Assessments

L-132 MP 38.49 to 40.05

San Bruno, CA

9/29/10 – 10/8/10

Table of Contents

Assessment Overview

DVD Legend / Maps of the Assessment Area

Assessment Data

1. Assessment #1
2. Assessment #2
3. Assessment #3
4. Assessment #4
5. Assessment #5
6. Assessment #6
7. Assessment #7
8. Assessment #8
9. Assessment #9
10. DVD Log and DVD's 1 - 23

L-132 Internal Camera Inspection MLV 38.49 at San Andreas Station to MLV 40.05 at Healy Station

Overview

PG&E conducted an internal camera assessment of its transmission line L-132 between mainline valves (MLV's) 38.49 at San Andreas Station to the south to 40.05 at Healy Station to the north. PG&E contracted with Inuktun Services Ltd (ISL) USA to supply and perform the camera inspections. Inuktun Services Ltd was founded in 1989 to design and manufacture Remotely Operated Vehicles (ROVs) and modular robotic systems for use in confined spaces and hazardous environments. Since then, the company has built a reputation as the expert in remote controlled robotic transport and delivery of visual inspection equipment and instrumentation tooling. The ROV camera selected for use on the project is the Versatrax 300 VLR™, which has 6500 feet of tether enabling the inspection of more than a mile of pipe in a single run. The VT300 includes 3 onboard video cameras, multiple sensor options, and is operable in pipe as small as 12in / 300mm internal diameter. The camera is operated remotely by the ROV pilot and contact is maintained with the unit by a hard wired tether. The VT300 on board motors must power the ROV and pull the tether through the pipeline. The length of tether, angles in the pipeline and elevation change all impact the amount of drag created by the tether and the ability of the machine to pull the cable. When angle changes occur in opposite directions this can result in the tether binding between angles, which can stop the progress of the ROV.

Inspection Procedure

On 9/27/10 and 9/28/10 clearances were conducted on L-132 to cutoff and isolate the shut-in section of the pipeline between southern and northern MLV's, 38.49 & 40.05. Until this time, the MLV's were closed, body bleed valves open, and the weld caps installed at the ends of the pipeline at the rupture hole. In order to safely conduct assessment work on and in the pipeline, 10-foot sections of pipe were removed from each MLV site close to the MLV's and on the shut-in side, and weld caps installed facing the MLV's. In addition, a district regulator tap was isolated from this section of pipeline. These actions resulted in elimination of potential sources of natural gas to the pipeline segments to be assessed. With the 6500-foot inspection capability of the ROV, the original plan was to travel the ROV from San Andreas Station towards

L-132 Internal Camera Inspection

MLV 38.49 at San Andreas Station to MLV 40.05 at Healy Station

Glenview/Earl and then travel from Healy Station to Glenview/Earl, viewing all segments of pipeline between MLV's. The Glenview/Earl site still had weld caps installed on each end. With the understanding that the ROV might have difficulty traversing multiple angles in the pipeline, contingencies were developed to enable shorter sections of pipeline to be assessed. The original contingency plan if the entire pipeline could not be viewed was to mobilize to the Glenview/Earl site, cutoff the weld caps, and insert the ROV south and north. The length of piping is approximately 4,000 feet north and south of Glenview/Earl to the MLV's. The contingency plan for Glenview/Earl enabled a further reduction in the length of pipeline segments for the ROV to traverse.

Assessment 1 - On 9/29/10, the crew mobilized to San Andreas Station for the first ROV run to the north towards the Glenview/Earl site. Due to four back-to-back 90-degree elbows, plus a few other slight angle points, the camera ceased forward progress at a tether-out length of 2854-feet. The camera results can be found on DVD disks 1 – 6.

Assessment 2 – On 9/30/10, the crew mobilized to Healy Station for the second ROV run to the south towards the Glenview/Earl site. Due to steep grade and slick pipeline liquid coating, the ROV ceased forward progress at a tether-out length of 110-feet. As a result of the difficulties encountered a location was identified at the top of the grade to excavate and remove a section of piping to provide another entry point for the ROV at Catalpa Way. Immediate steps were taken to initiate permitting and notifications for this additional location. The camera results can be found on DVD disks 7 – 8.

Assessment 3 – On 10/4/10, the crew mobilized to Glenview/Earl site for the third ROV run to the south towards San Andreas Station. In order to prepare for this run and one additional run to the north, both steel caps were removed from the pipeline at Glenview/Earl to allow for entry of the camera into the ends of the pipe at this location. Due mostly to numerous angle points and somewhat due to a moderate grade, the ROV ceased forward progress at a tether-

L-132 Internal Camera Inspection

MLV 38.49 at San Andreas Station to MLV 40.05 at Healy Station

out length of 1441-feet. The end points for Assessment 1 and Assessment 3 resulted in approximately 139' of piping for this section that was not reviewed as shown on the diagram for Line 132 Assessment 3 – SHT 1 of 2. The camera results can be found on DVD disks 9 – 12.

Assessment 4 – On 10/5/10, the crew mobilized again at the Glenview/Earl site for the fourth ROV run to the north towards Healy Station. Due mostly to numerous angle points and somewhat due to a moderate grade, the ROV ceased forward progress at a tether-out length of 997-feet. Although this distance was less than anticipated, the ROV entered into 24-inch OD pipe installed in 1994. The camera results can be found on DVD disks 13 – 14.

Assessment 5 – On 10/5/10, in the afternoon, the crew relocated to the Catalpa site (basketball court) for the 5th ROV run south towards Glenview/Earl. Forward progress was intentionally stopped at a tether-out length of 487-feet. Although this distance was less than anticipated, the ROV entered into the same 24-inch OD pipe installed in 1994 that the ROV entered in Assessment 4. The end points for Assessment 4 and Assessment 5 resulted in approximately 594 feet of piping that was not reviewed, as shown on the diagram for Line 132, Assessment 4. The camera results can be found on DVD disks 15 – 16.

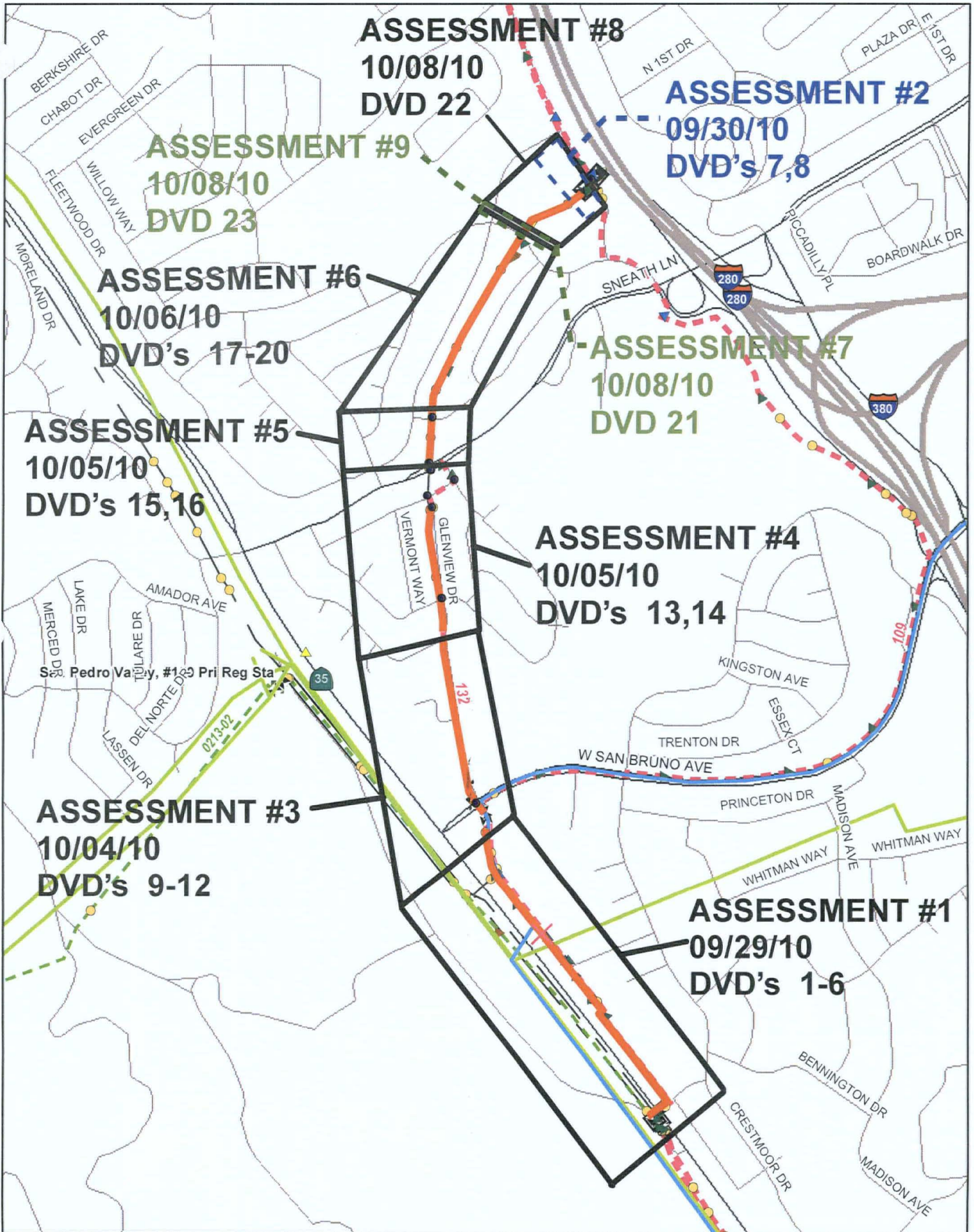
Assessment 6 – On 10/6/10, the crew re-assembled at the Catalpa site for the 6th ROV run to the north towards Healy Station. Due to steep downward grade with multiple angles as well as pipeline liquids encountered across Rollingwood Dr, forward progress ceased at a tether-out length of 1599-feet. As a result of the difficulties encountered a location was identified between Catalpa and Healy near Rollingwood Drive, to perform additional assessment. Arrangements were immediately made for excavation and removal of piping to enable insertion of the ROV to complete this section of line. The camera results can be found on DVD disks 17 – 20.

**L-132 Internal Camera Inspection
MLV 38.49 at San Andreas Station to MLV 40.05 at Healy Station**

Assessment 7 – On 10/8/10, the crew mobilized to the Rollingwood Dr site for the 7th ROV run to the south towards Catalpa. Forward progress was intentionally stopped after a tether-out length of 72-ft, overlapping the previous pipe viewed from Catalpa, north. The camera results can be found on DVD disk 21.

Assessment 8 – On 10/8/10, the ROV direction was switched at the Rollingwood Dr site for the 8th ROV run to the north towards Healy Station. The ROV arrived at Healy Station with a tether-out length of 554-feet. The camera results can be found on DVD disk 22.

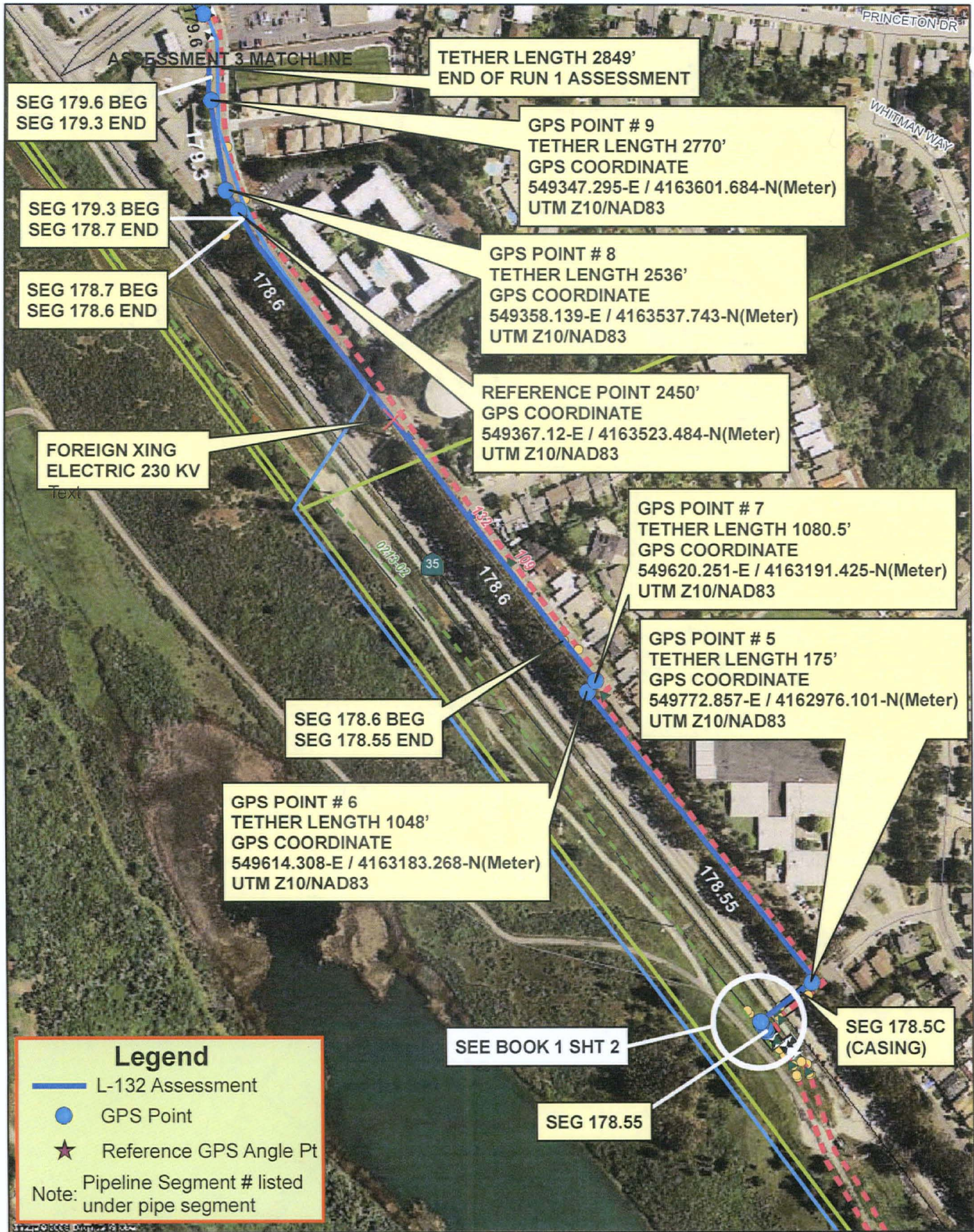
Assessment 9 – On 10/8/10, the ROV was transported from Healy Station back to Rollingwood Dr and inserted back into the pipeline to view the same Assessment 7 pipe after the pipeline was vacuumed of the pipeline liquids encountered. The camera results can be found on DVD disk 23.

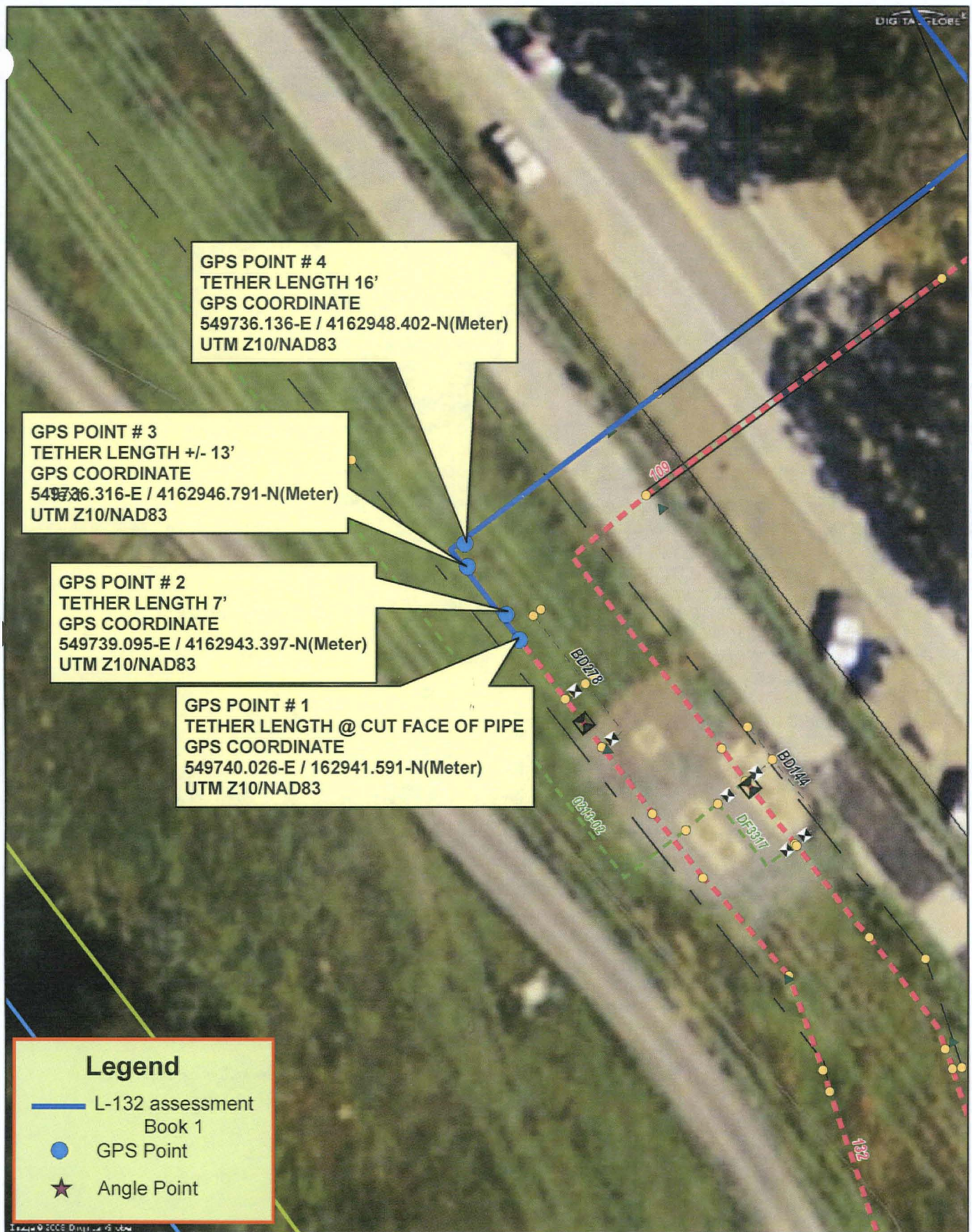


L-132 ASSESSMENT
09/29/10 - 10/08/10
DVD LEGEND

10/13/2010
05:45 PM

1 inch equals 1,000 feet (approx.)





GPS POINT # 4
 TETHER LENGTH 16'
 GPS COORDINATE
 549736.136-E / 4162948.402-N(Meter)
 UTM Z10/NAD83

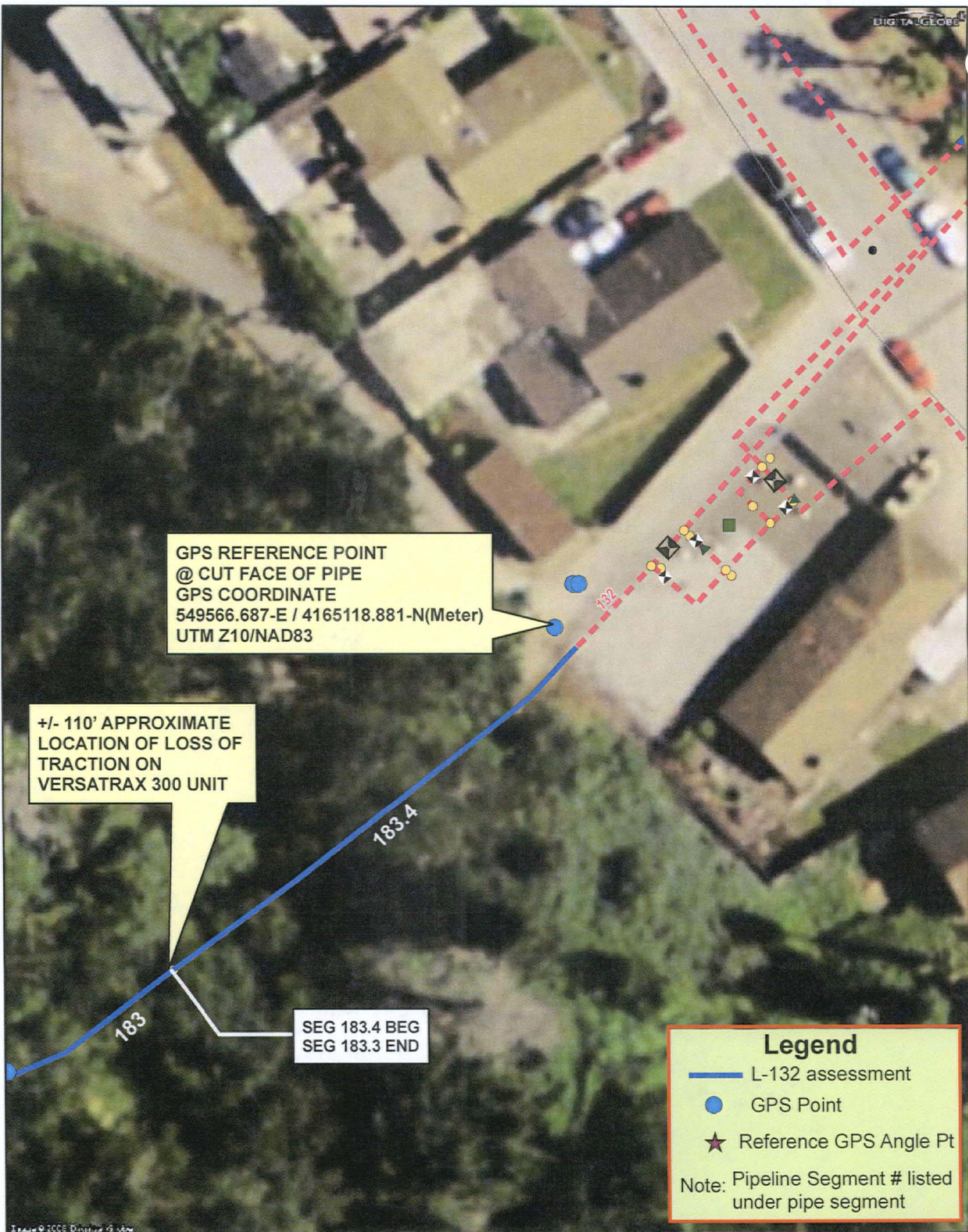
GPS POINT # 3
 TETHER LENGTH +/- 13'
 GPS COORDINATE
 549736.316-E / 4162946.791-N(Meter)
 UTM Z10/NAD83

GPS POINT # 2
 TETHER LENGTH 7'
 GPS COORDINATE
 549739.095-E / 4162943.397-N(Meter)
 UTM Z10/NAD83

GPS POINT # 1
 TETHER LENGTH @ CUT FACE OF PIPE
 GPS COORDINATE
 549740.026-E / 162941.591-N(Meter)
 UTM Z10/NAD83

Legend

- L-132 assessment Book 1
- GPS Point
- ★ Angle Point



GPS REFERENCE POINT
 @ CUT FACE OF PIPE
 GPS COORDINATE
 549566.687-E / 4165118.881-N(Meter)
 UTM Z10/NAD83

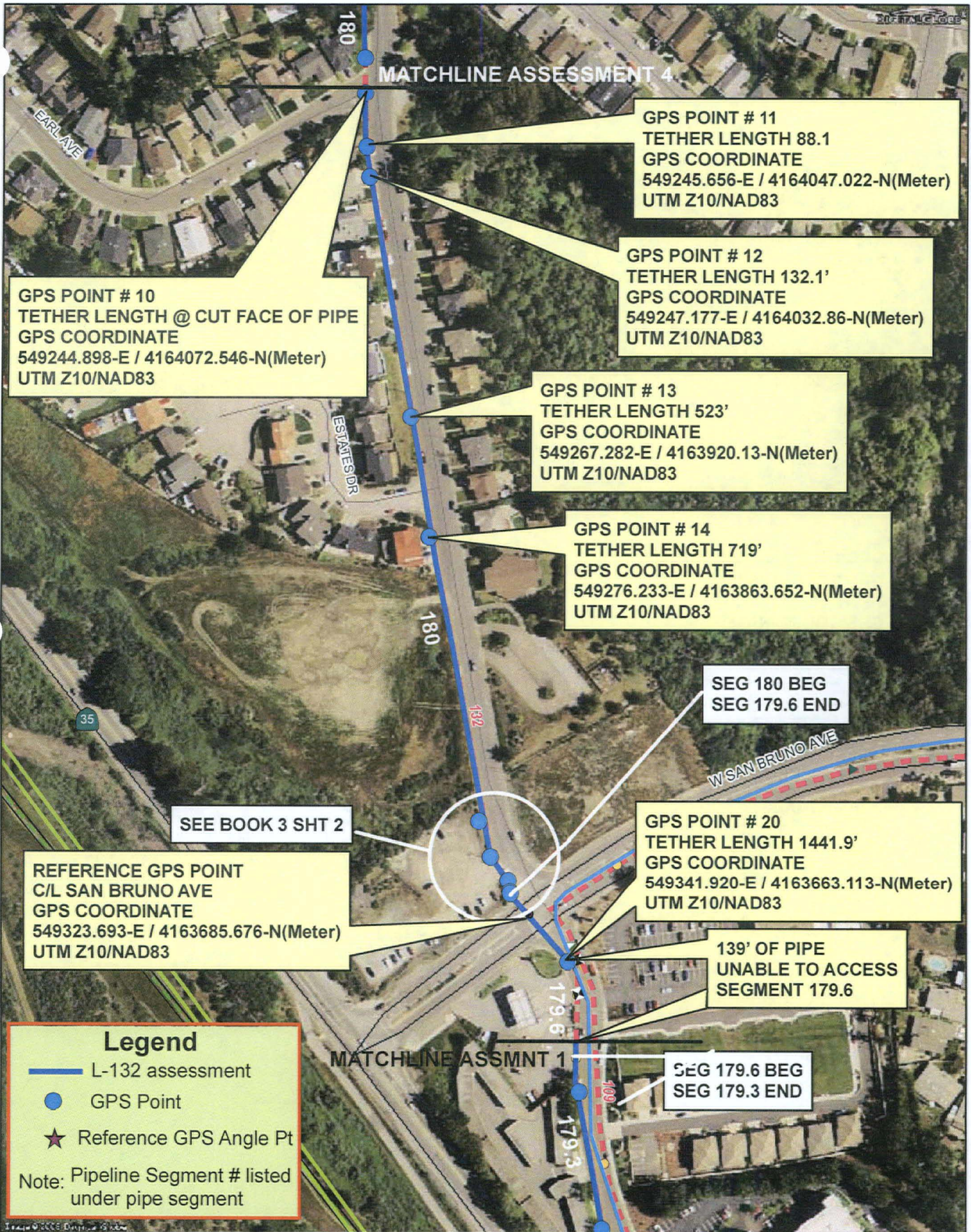
+/- 110' APPROXIMATE
 LOCATION OF LOSS OF
 TRACTION ON
 VERSATRAX 300 UNIT

SEG 183.4 BEG
 SEG 183.3 END

Legend

- L-132 assessment
- GPS Point
- ★ Reference GPS Angle Pt

Note: Pipeline Segment # listed under pipe segment



LINE 132 ASSESSMENT 3 - SHT 1 OF 2

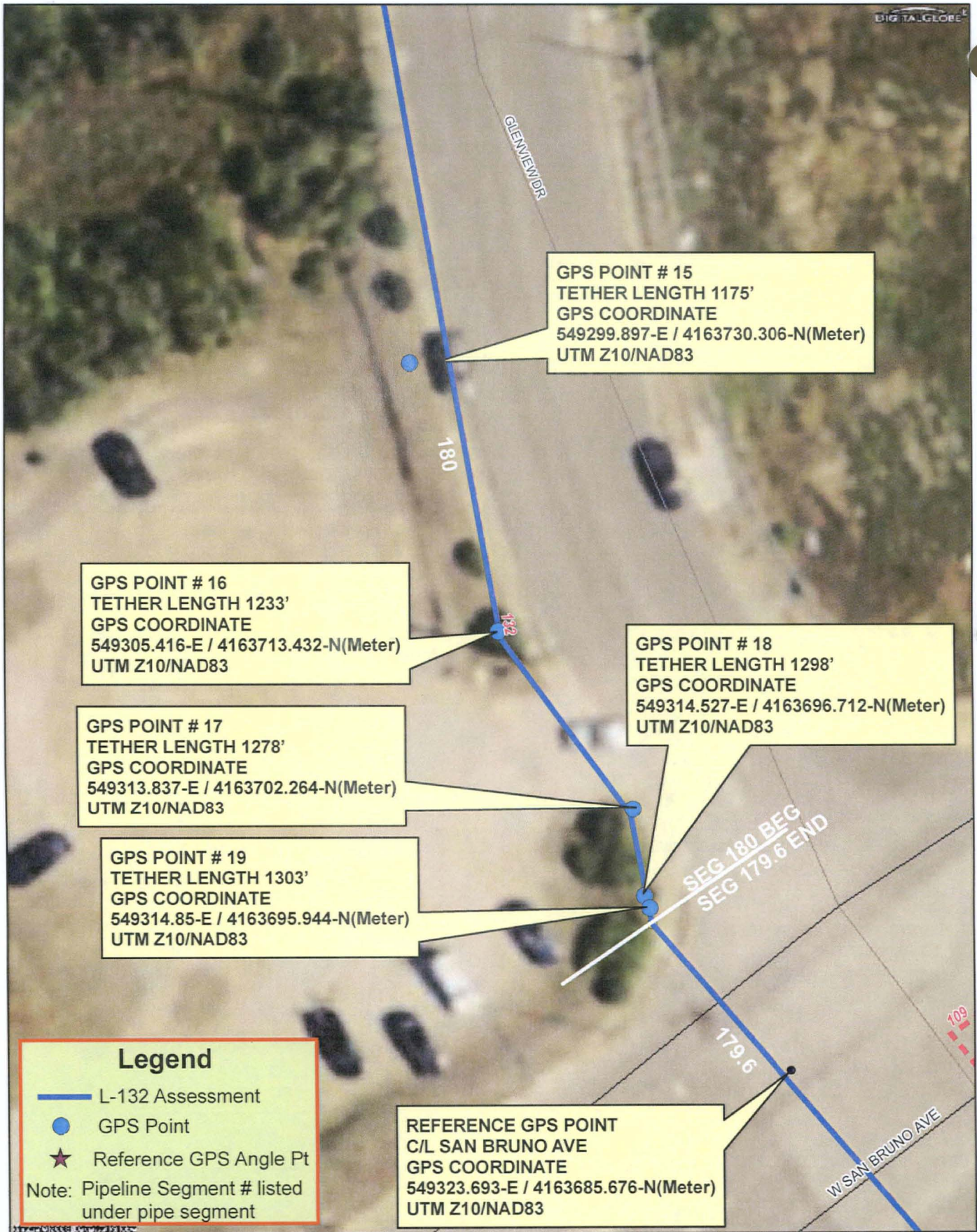
10/04/2010

GLENVIEW & EARL SOUTH INSPECTION

IUSA DVD'S 9-12

10/13/2010
05:59 PM

1 inch equals 200 feet (approx.)



GPS POINT # 15
 TETHER LENGTH 1175'
 GPS COORDINATE
 549299.897-E / 4163730.306-N(Meter)
 UTM Z10/NAD83

GPS POINT # 16
 TETHER LENGTH 1233'
 GPS COORDINATE
 549305.416-E / 4163713.432-N(Meter)
 UTM Z10/NAD83

GPS POINT # 18
 TETHER LENGTH 1298'
 GPS COORDINATE
 549314.527-E / 4163696.712-N(Meter)
 UTM Z10/NAD83

GPS POINT # 17
 TETHER LENGTH 1278'
 GPS COORDINATE
 549313.837-E / 4163702.264-N(Meter)
 UTM Z10/NAD83

GPS POINT # 19
 TETHER LENGTH 1303'
 GPS COORDINATE
 549314.85-E / 4163695.944-N(Meter)
 UTM Z10/NAD83

REFERENCE GPS POINT
 C/L SAN BRUNO AVE
 GPS COORDINATE
 549323.693-E / 4163685.676-N(Meter)
 UTM Z10/NAD83

Legend

- L-132 Assessment
- GPS Point
- ★ Reference GPS Angle Pt

Note: Pipeline Segment # listed under pipe segment



Legend

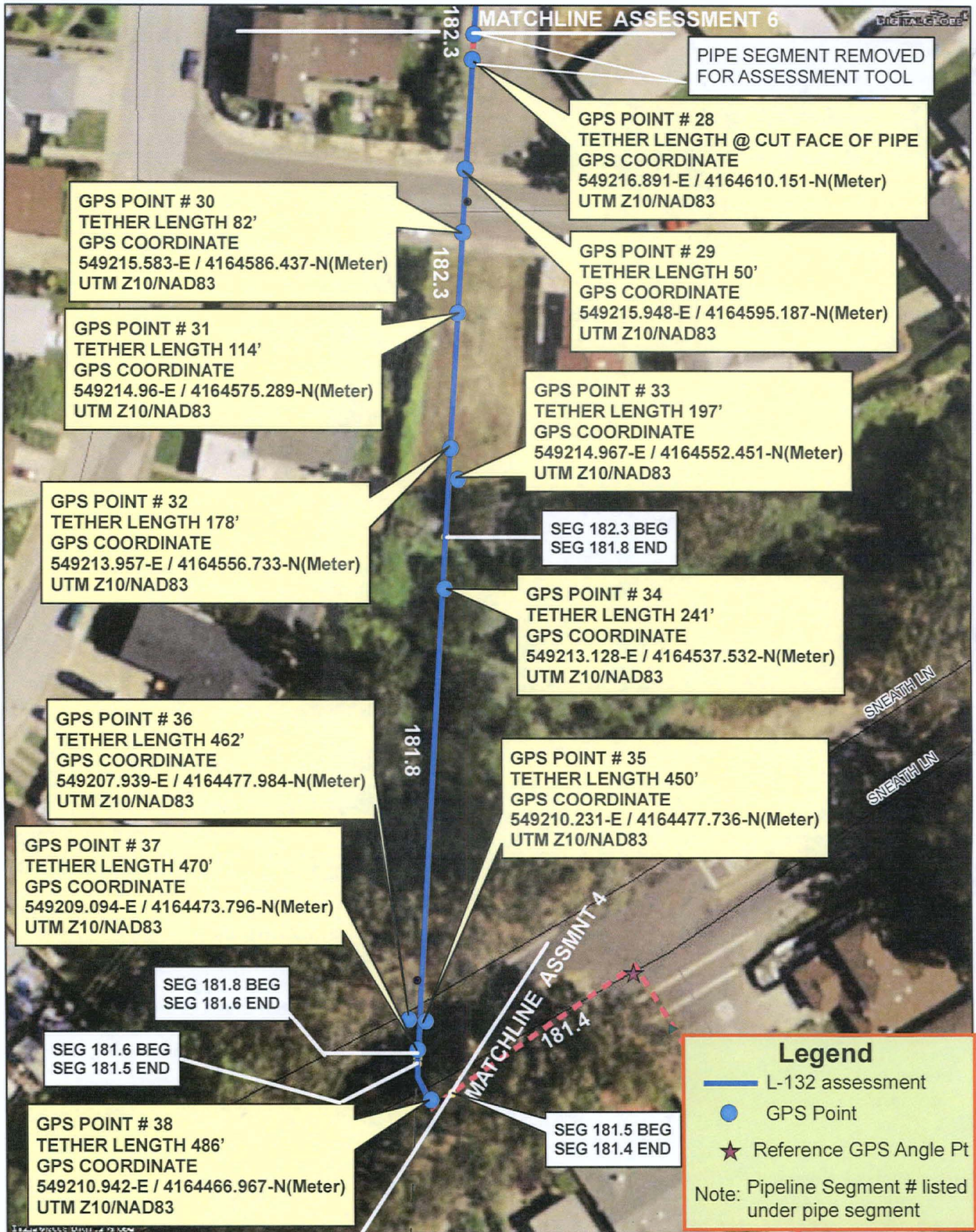
- L-132 assessment
- GPS Point
- ★ Reference GPS Angle Pt

Note: Pipeline Segment # listed under pipe segment

LINE 132 ASSESSMENT 4
10/05/2010
GLENVIEW & EARL NORTH INSPECTION
IUSA DVD'S 13&14

10/13/2010 06:08 PM

1 inch equals 150 feet (approx.)



LINE 132 ASSESSMENT 5

10/05/2010

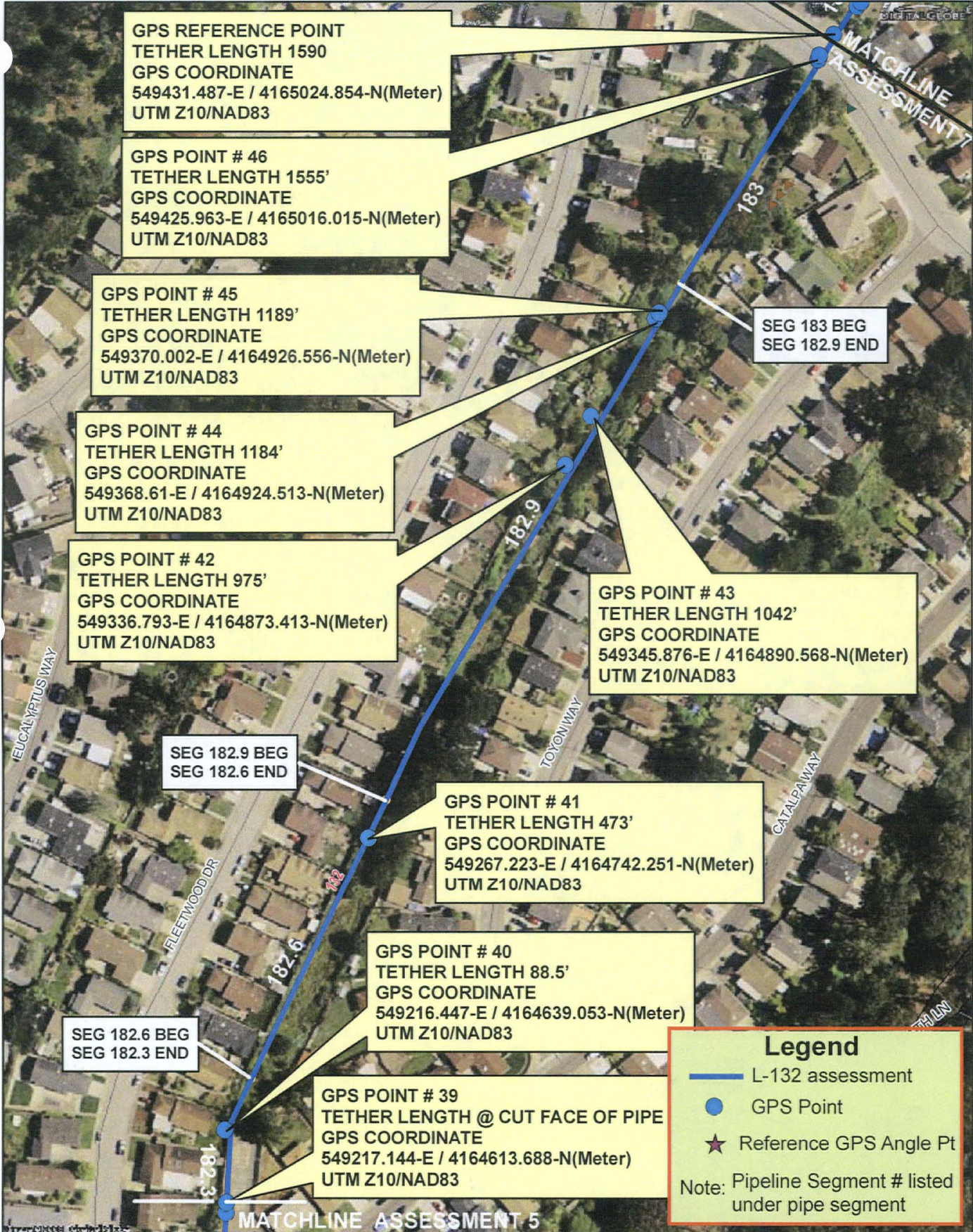
BASKETBALL SOUTH INSPECTION (CATALPA WAY)

IUSA DVD'S 15 & 16

10/13/2010
06:12 PM



1 inch equals 58.333333 feet (approx.)



GPS REFERENCE POINT
 TETHER LENGTH 1590
 GPS COORDINATE
 549431.487-E / 4165024.854-N(Meter)
 UTM Z10/NAD83

GPS POINT # 46
 TETHER LENGTH 1555'
 GPS COORDINATE
 549425.963-E / 4165016.015-N(Meter)
 UTM Z10/NAD83

GPS POINT # 45
 TETHER LENGTH 1189'
 GPS COORDINATE
 549370.002-E / 4164926.556-N(Meter)
 UTM Z10/NAD83

GPS POINT # 44
 TETHER LENGTH 1184'
 GPS COORDINATE
 549368.61-E / 4164924.513-N(Meter)
 UTM Z10/NAD83

GPS POINT # 42
 TETHER LENGTH 975'
 GPS COORDINATE
 549336.793-E / 4164873.413-N(Meter)
 UTM Z10/NAD83

GPS POINT # 43
 TETHER LENGTH 1042'
 GPS COORDINATE
 549345.876-E / 4164890.568-N(Meter)
 UTM Z10/NAD83

GPS POINT # 41
 TETHER LENGTH 473'
 GPS COORDINATE
 549267.223-E / 4164742.251-N(Meter)
 UTM Z10/NAD83

GPS POINT # 40
 TETHER LENGTH 88.5'
 GPS COORDINATE
 549216.447-E / 4164639.053-N(Meter)
 UTM Z10/NAD83

GPS POINT # 39
 TETHER LENGTH @ CUT FACE OF PIPE
 GPS COORDINATE
 549217.144-E / 4164613.688-N(Meter)
 UTM Z10/NAD83

SEG 183 BEG
 SEG 182.9 END

SEG 182.9 BEG
 SEG 182.6 END

SEG 182.6 BEG
 SEG 182.3 END

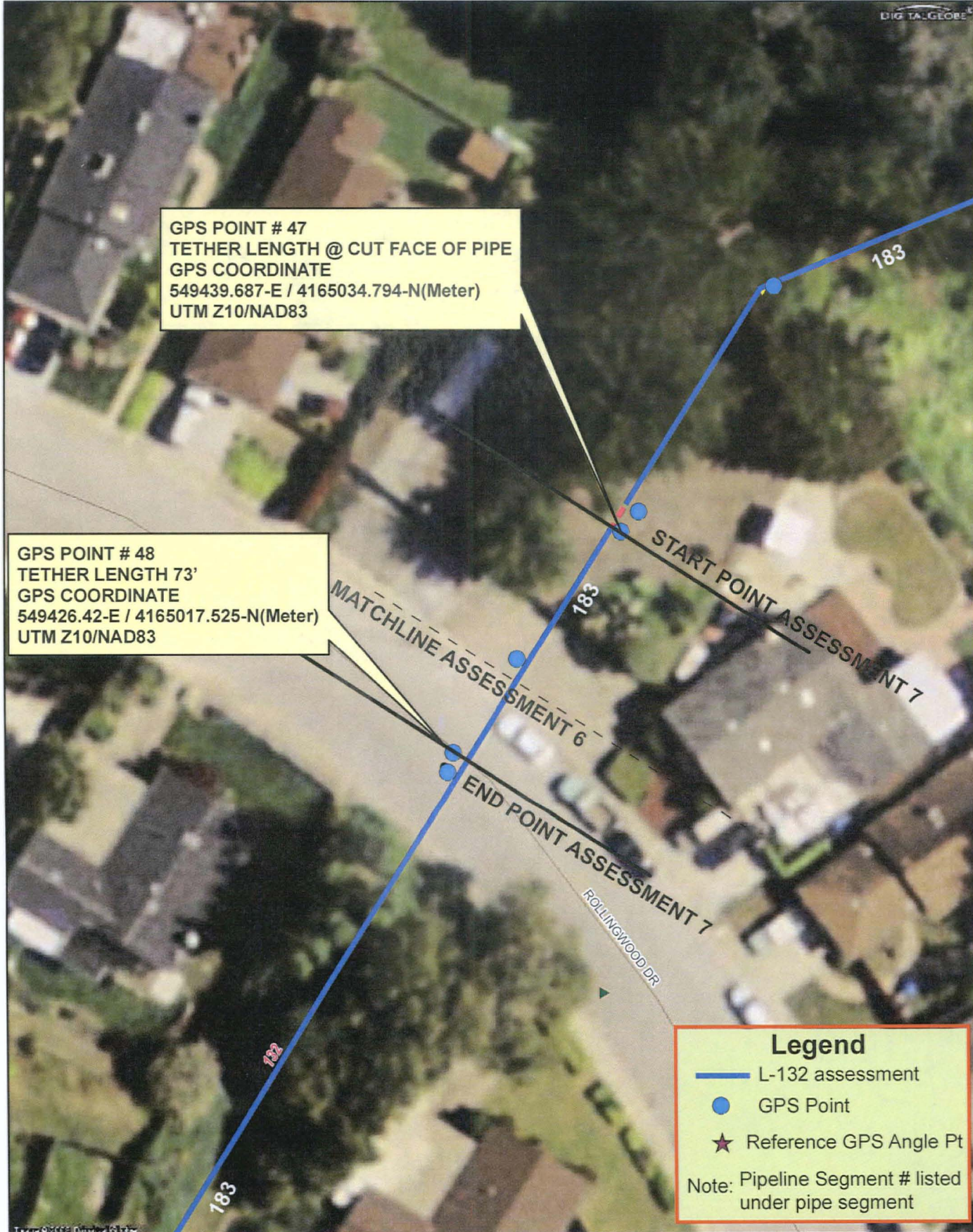
Legend

- L-132 assessment
- GPS Point
- ★ Reference GPS Angle Pt

Note: Pipeline Segment # listed under pipe segment

GPS POINT # 47
TETHER LENGTH @ CUT FACE OF PIPE
GPS COORDINATE
549439.687-E / 4165034.794-N(Meter)
UTM Z10/NAD83

GPS POINT # 48
TETHER LENGTH 73'
GPS COORDINATE
549426.42-E / 4165017.525-N(Meter)
UTM Z10/NAD83



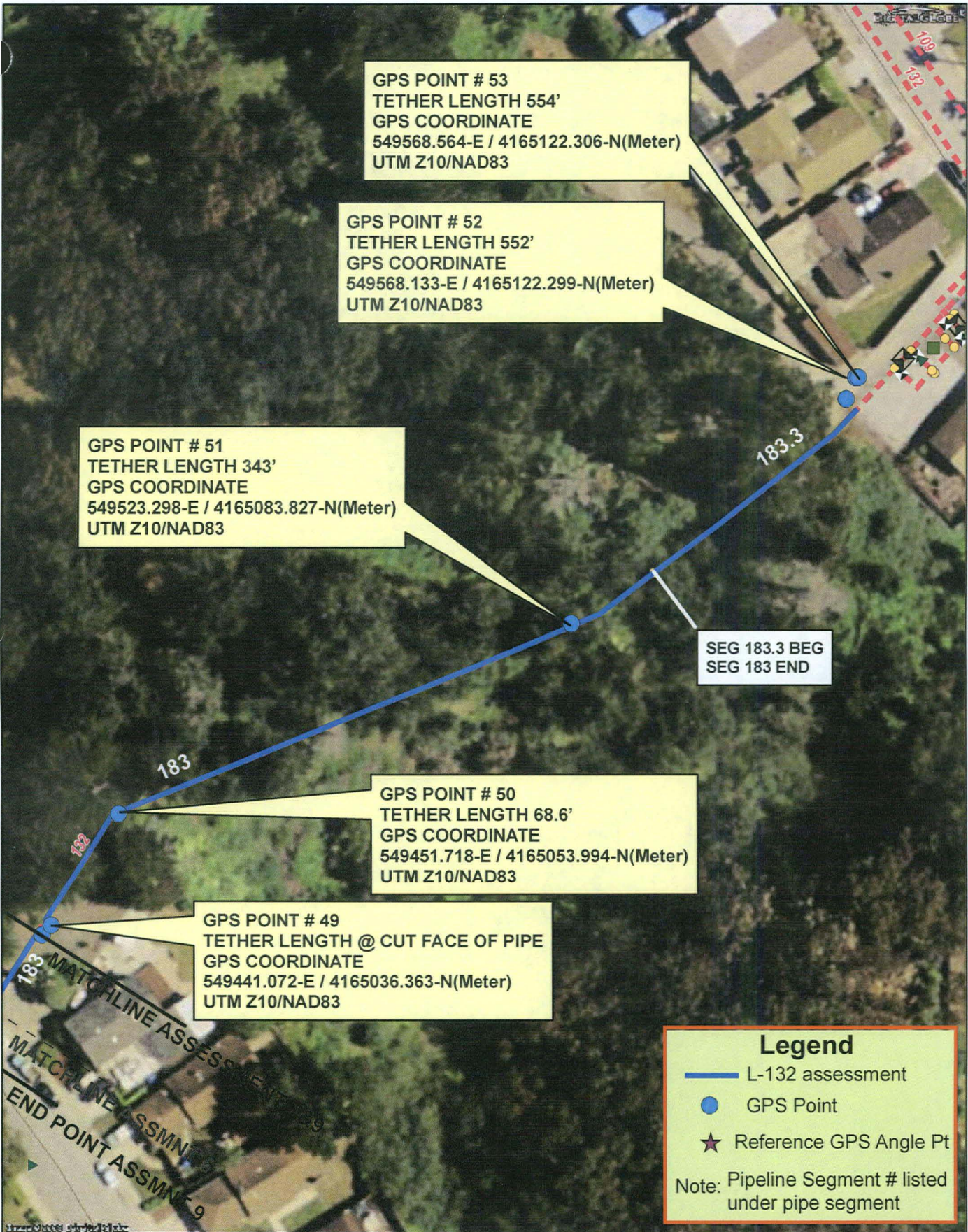
Legend

- L-132 assessment
- GPS Point
- ★ Reference GPS Angle Pt

Note: Pipeline Segment # listed under pipe segment

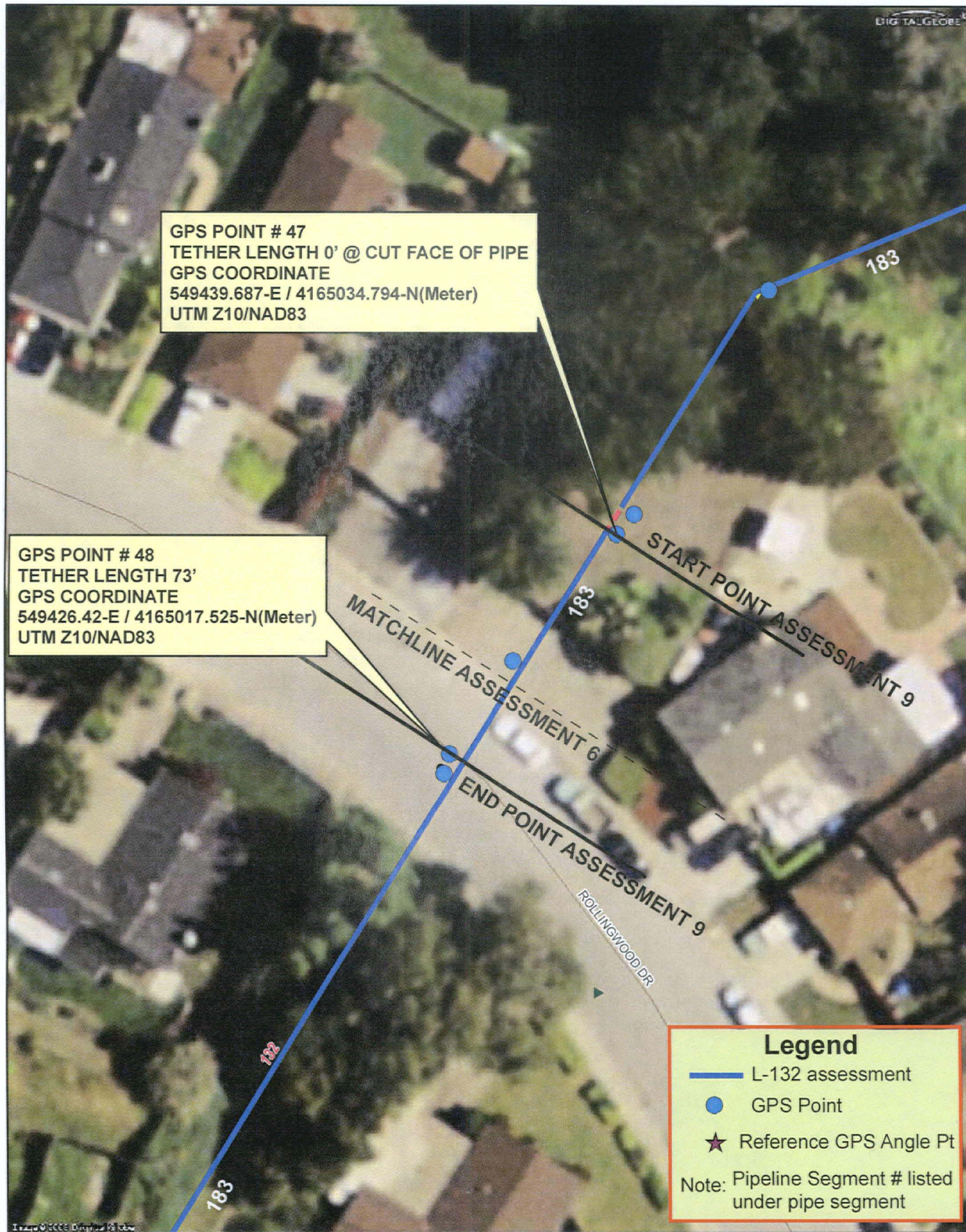
LINE 132 ASSESSMENT 7
10/08/2010

10/13/2010 06:19 PM
N
W E S



GPS POINT # 47
TETHER LENGTH 0' @ CUT FACE OF PIPE
GPS COORDINATE
549439.687-E / 4165034.794-N(Meter)
UTM Z10/NAD83

GPS POINT # 48
TETHER LENGTH 73'
GPS COORDINATE
549426.42-E / 4165017.525-N(Meter)
UTM Z10/NAD83



Legend

- L-132 assessment
- GPS Point
- ★ Reference GPS Angle Pt

Note: Pipeline Segment # listed under pipe segment

LINE - 132 REMOTE VIDEO INSPECTION

CAMERA ENTRY: San Andreas Station drive to Earl ave.

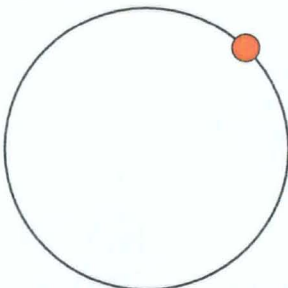
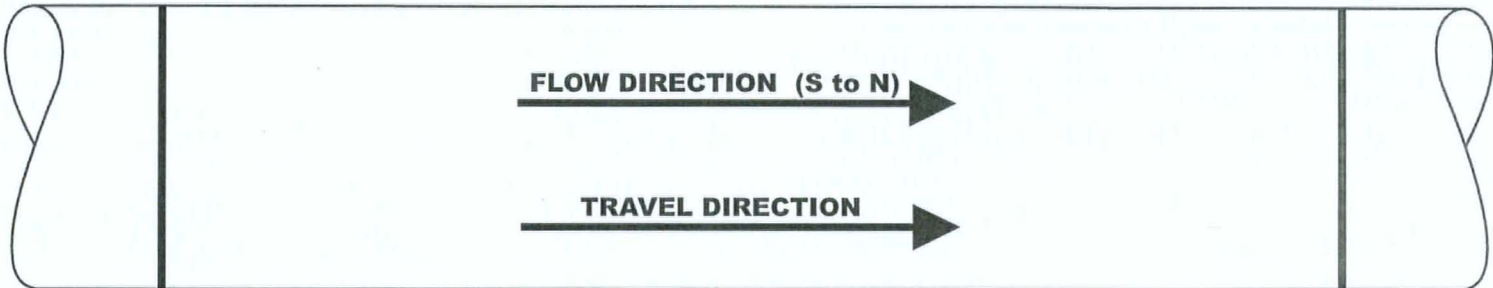
DATE: 09/29/2010

PIPE SEGMENT: 074

GW # 078 Footage: 2543'

GW # 079 Footage: 2549'

LS POSITION



LONG SEAM TYPE: DSAW SSAW ERW SMLS FLASH LAP UNK

COMMENTS: (Spool with stencil - 40.1)

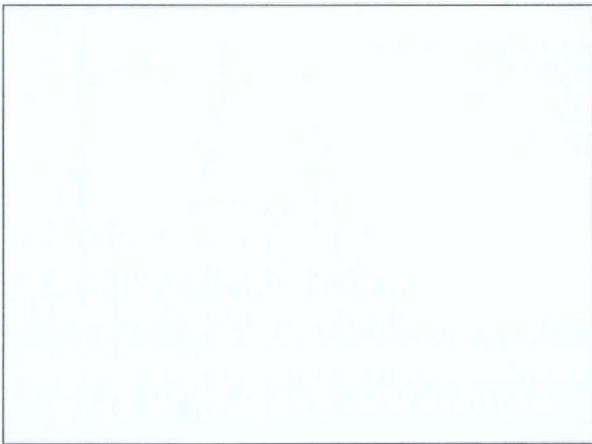
GPS: .



GPS:



GPS:



Stencil spool

*** Information listed in this document is PRIVILEGED & CONFIDENTIAL**

LINE - 132 REMOTE VIDEO INSPECTION

CAMERA ENTRY: Healy Station drive to Earl ave.

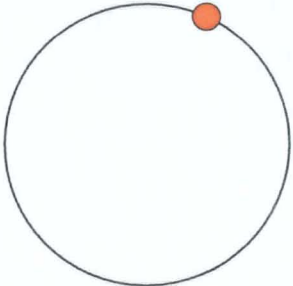
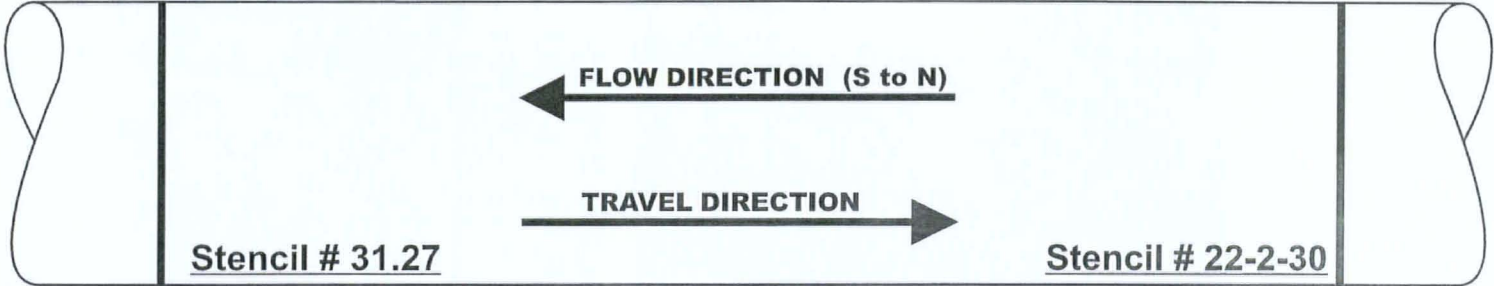
DATE: 09/30/2010

PIPE SEGMENT: 004

GW # 004 Footage: 48'

GW # 005 Footage: 71'

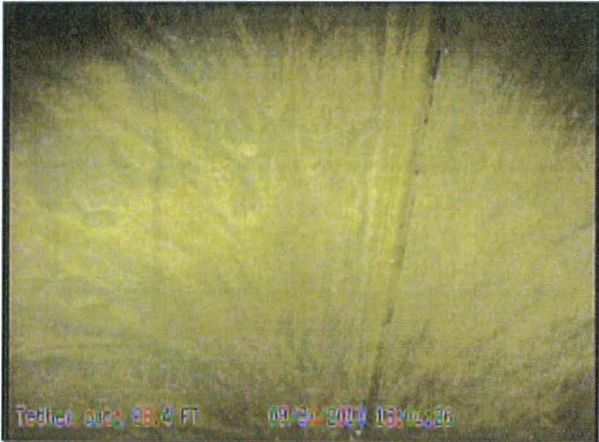
LS POSITION



LONG SEAM TYPE: DSAW SSAW ERW SMLS FLASH LAP UNK

COMMENTS: Black spots on edge of LS @ 68' (linear).

GPS:



GPS:



GPS:



Black line adjacent to the LS.

*** Information listed in this document is PRIVILEGED & CONFIDENTIAL**

LINE - 132 REMOTE VIDEO INSPECTION

CAMERA ENTRY: Earl ave. drive to San Andreas Station

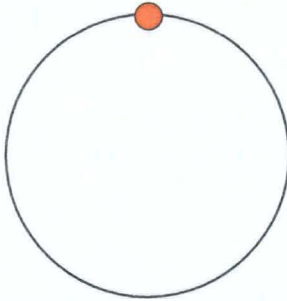
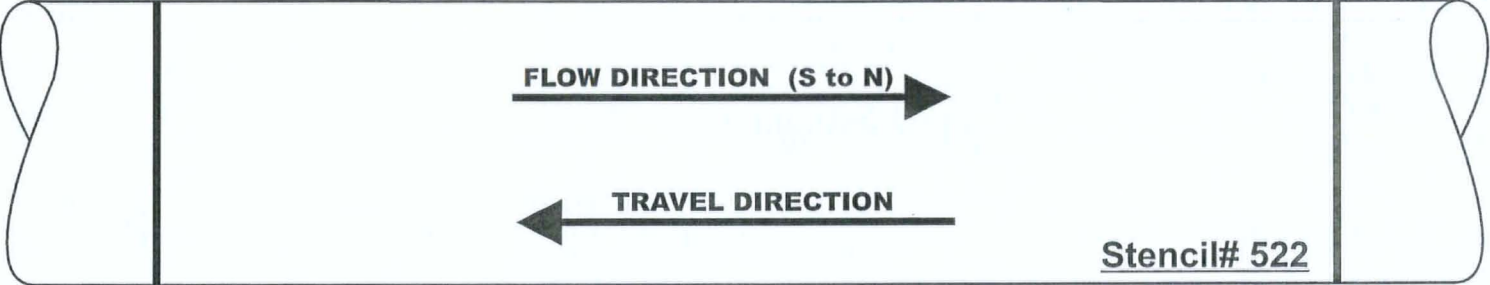
DATE: 10/04/2010

PIPE SEGMENT: 020

GW # 020 Footage: 455'

GW # 021 Footage: 489'

LS POSITION



LONG SEAM TYPE: DSAW SSAW ERW SMLS FLASH LAP UNK

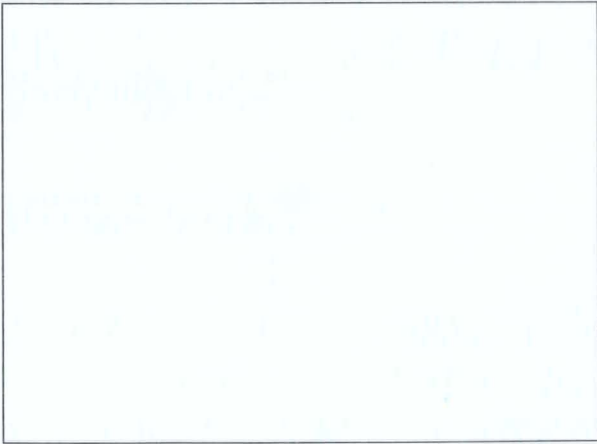
COMMENTS: Parallel lines @ both sides of LS intermittent, GW# 21 back welded and ground.

GPS:



View of lines adjacent to LS

GPS:



GPS:



*** Information listed in this document is PRIVILEGED & CONFIDENTIAL**

LINE - 132 REMOTE VIDEO INSPECTION

CAMERA ENTRY: Earl ave. drive to San Andreas Station

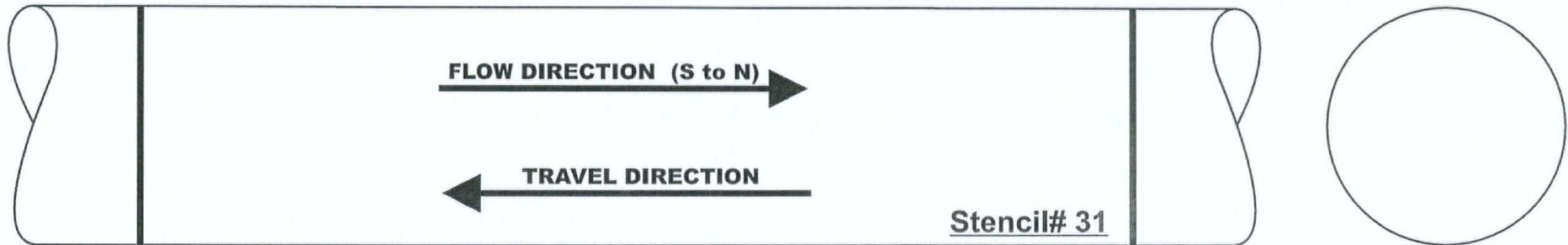
DATE: 10/04/2010

PIPE SEGMENT: 028

GW # 028 Footage: 718'

GW # 029 Footage: 719'

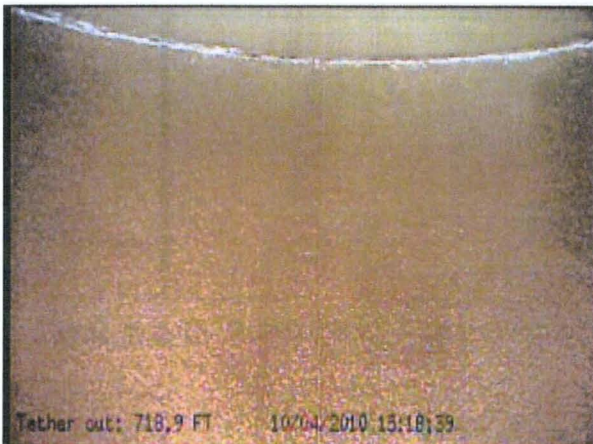
LS POSITION



LONG SEAM TYPE: DSAW SSAW ERW SMLS FLASH LAP UNK

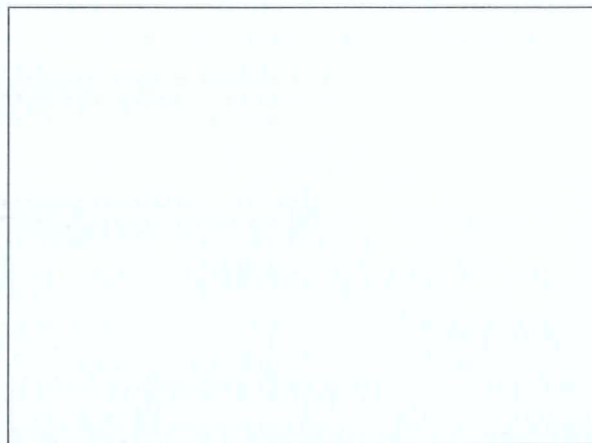
COMMENTS: Short spool between GW# 28 & 29, possible LS @ 06:00 position.

GPS:



View of possible LS @ 06:00

GPS:



GPS:



*** Information listed in this document is PRIVILEGED & CONFIDENTIAL**

LINE - 132 REMOTE VIDEO INSPECTION

CAMERA ENTRY: Earl ave. drive to San Andreas Station

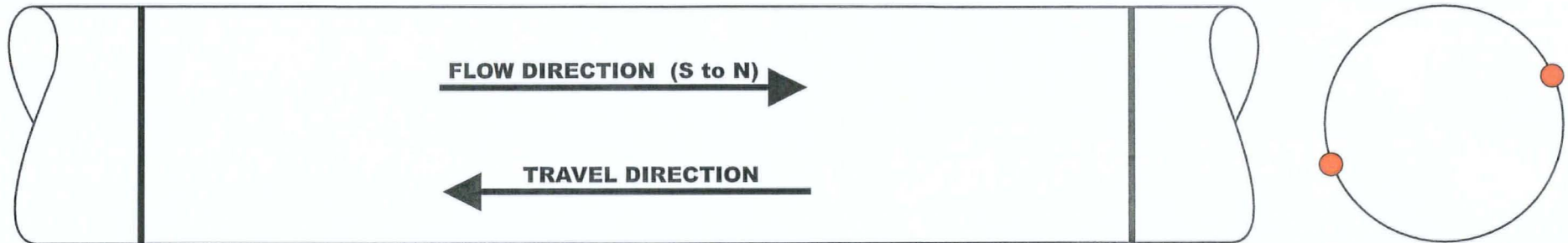
DATE: 10/04/2010

PIPE SEGMENT: 055

GW # 055 Footage: 1302'

GW # 056 Footage: 1303'

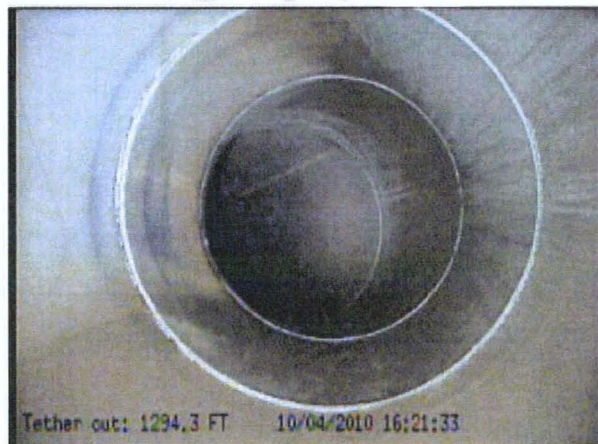
LS POSITION



LONG SEAM TYPE: DSAW SSAW ERW SMLS FLASH LAP UNK

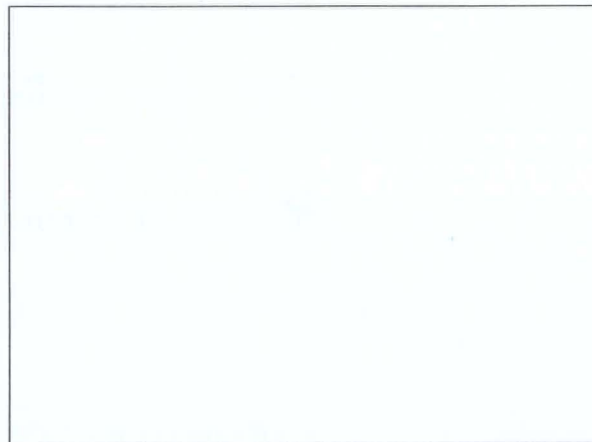
COMMENTS: Angle point Left, Double DSAW LS in spool.

GPS: #19, @ Angle point.

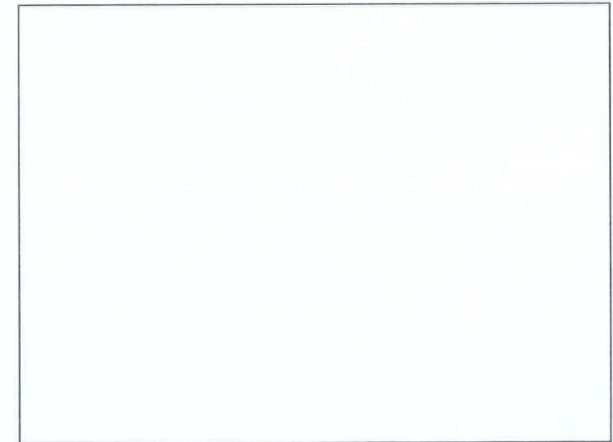


View of double DSAW spool

GPS:



GPS:



*** Information listed in this document is PRIVILEGED & CONFIDENTIAL**

LINE - 132 REMOTE VIDEO INSPECTION

CAMERA ENTRY: Earl ave. drive to Healy Station

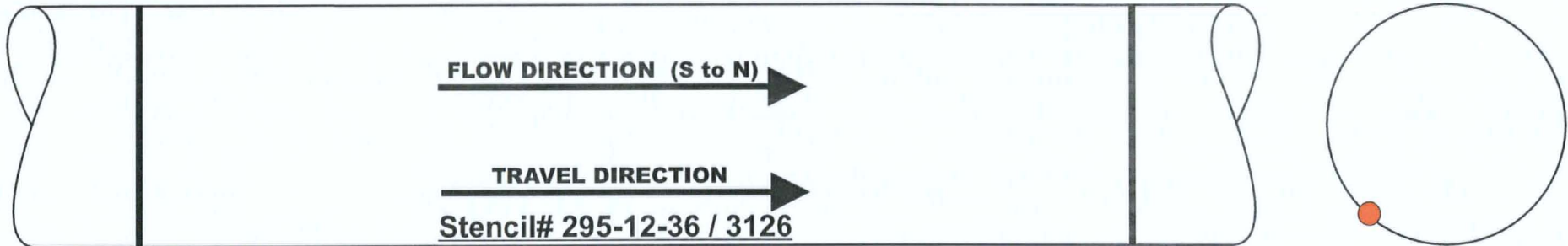
DATE: 10/05/2010

PIPE SEGMENT: 022

GW # 021 Footage: 420'

GW # 022 Footage: 423'

LS POSITION



LONG SEAM TYPE: DSAW SSAW ERW SMLS FLASH LAP UNK

COMMENTS: Save-a-valve @ 421' (Pup @ end of elbow) / Sleeve @ GW-22

GPS:



GPS:



GPS:



Save-a-valve @ 421' (Pup @ end of elbow)

*** Information listed in this document is PRIVILEGED & CONFIDENTIAL**

LINE - 132 REMOTE VIDEO INSPECTION

CAMERA ENTRY: Earl ave. drive to Healy Station

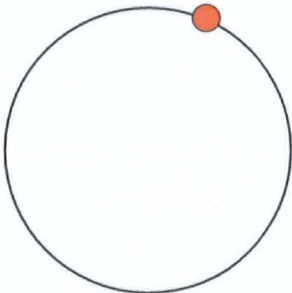
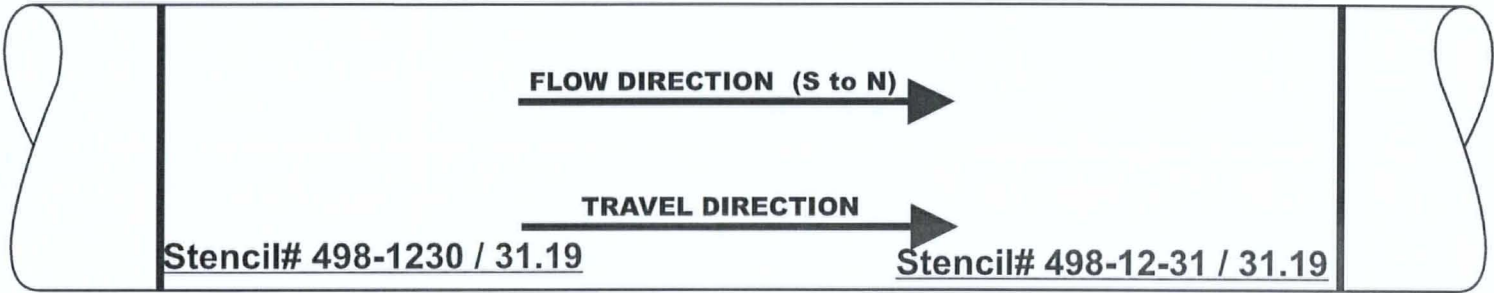
DATE: 10/05/2010

PIPE SEGMENT: 025

GW # 024 Footage: 474'

GW # 025 Footage: 505'

LS POSITION



LONG SEAM TYPE: DSAW SSAW ERW SMLS FLASH LAP UNK

COMMENTS:

GPS:

GPS:

GPS:

*** Information listed in this document is PRIVILEGED & CONFIDENTIAL**

LINE - 132 REMOTE VIDEO INSPECTION

CAMERA ENTRY: Catalpa Way drive to Earl ave.

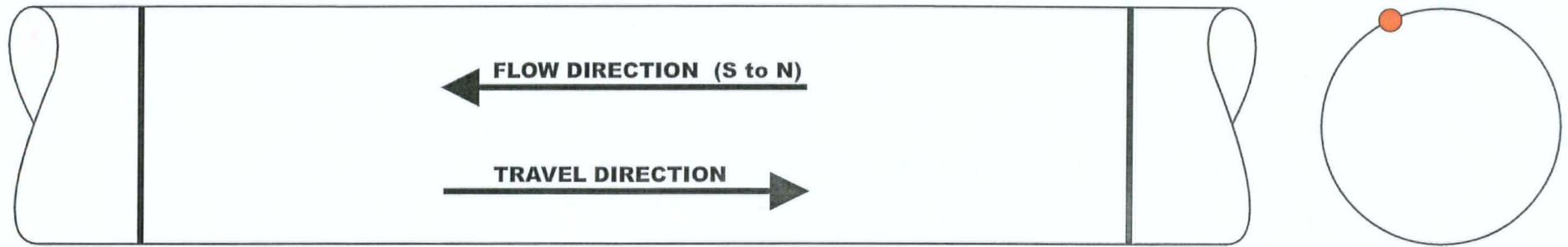
DATE: 10/05/2010

PIPE SEGMENT: 003

GW # 002 Footage: 50'

GW # 003 Footage: 82'

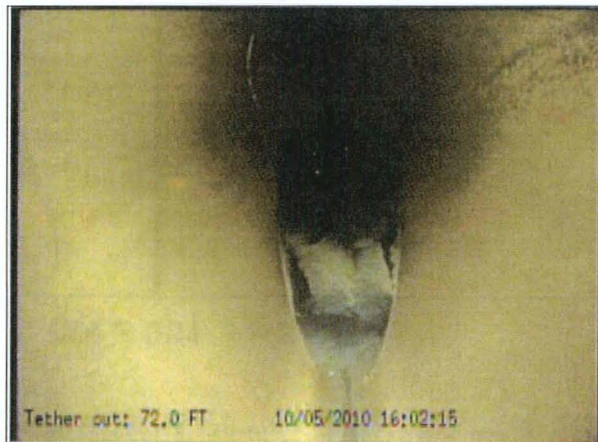
LS POSITION



LONG SEAM TYPE: DSAW SSAW ERW SMLS FLASH LAP UNK

COMMENTS: Liquid Pool @ 75' to 82', angle point @ GW# 3

GPS: 30, Angle point @ GW# 3



GPS:



GPS:



View of liquids @ 75'

*** Information listed in this document is PRIVILEGED & CONFIDENTIAL**

LINE - 132 REMOTE VIDEO INSPECTION

CAMERA ENTRY: Catalpa Way drive to Earl ave.

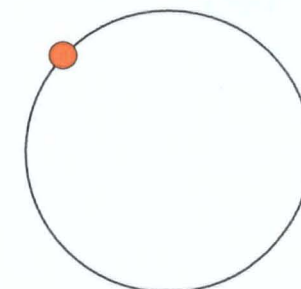
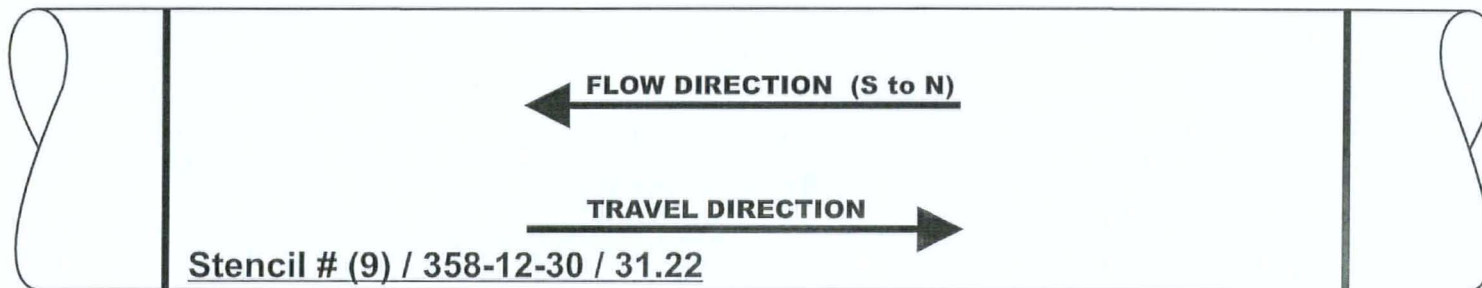
DATE: 10/05/2010

PIPE SEGMENT: 009

GW # 008 Footage: 197'

GW # 009 Footage: 228'

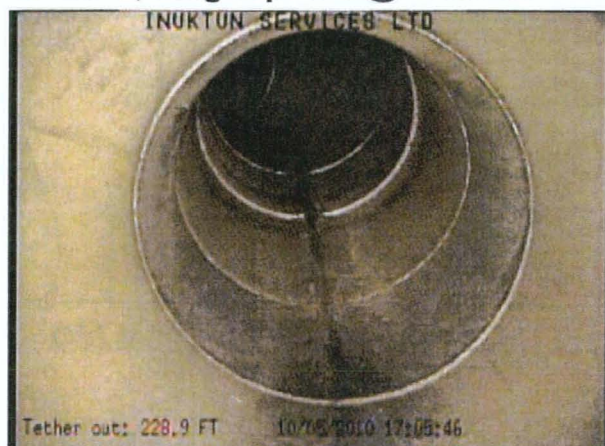
LS POSITION



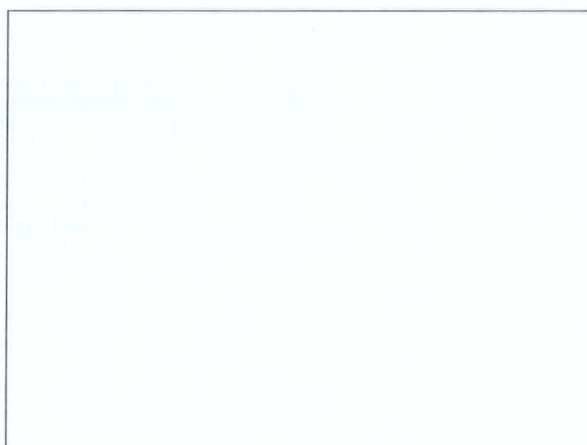
LONG SEAM TYPE: DSAW SSAW ERW SMLS FLASH LAP UNK

COMMENTS: Angle point down @ 197' , GW# 8.

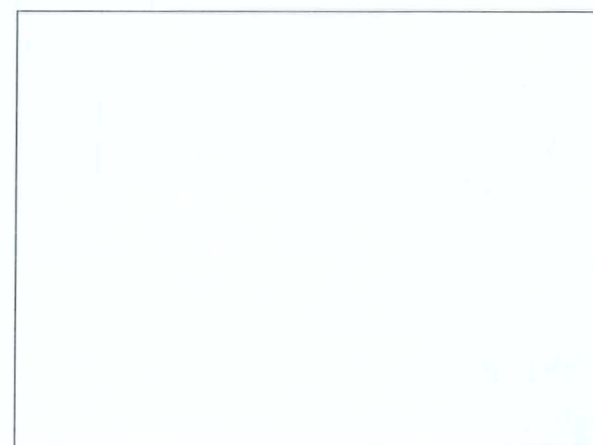
GPS:33, Angle point @ GW# 8.



GPS:



GPS:



View of spool assembly @ 228'

*** Information listed in this document is PRIVILEGED & CONFIDENTIAL**

LINE - 132 REMOTE VIDEO INSPECTION

CAMERA ENTRY: Catalpa Way drive to Earl ave.

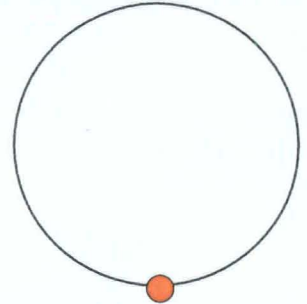
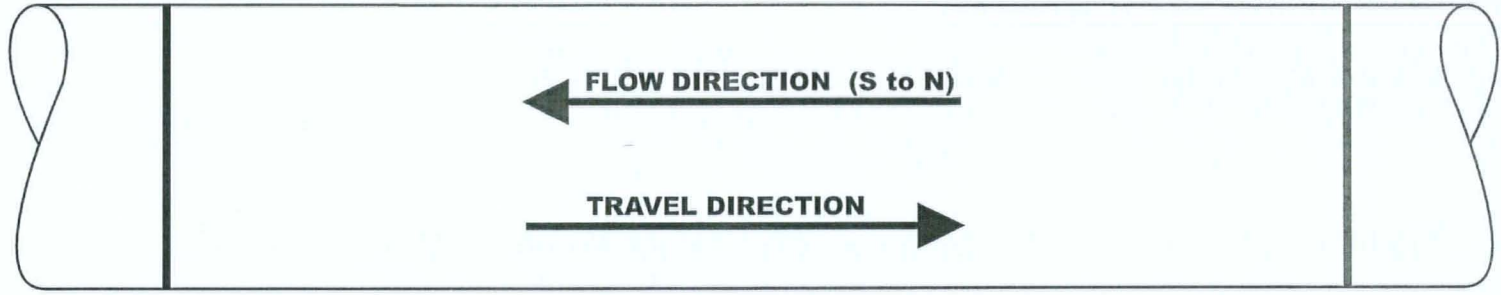
DATE: 10/05/2010

PIPE SEGMENT: 014

GW # 013 Footage: 242.5'

GW # 014 Footage: 245.5'

LS POSITION



LONG SEAM TYPE: DSAW SSAW ERW SMLS FLASH LAP UNK

COMMENTS: Short spool

GPS:

GPS:

GPS:

*** Information listed in this document is PRIVILEGED & CONFIDENTIAL**

LINE - 132 REMOTE VIDEO INSPECTION

CAMERA ENTRY: Catalpa Way drive to Earl ave.

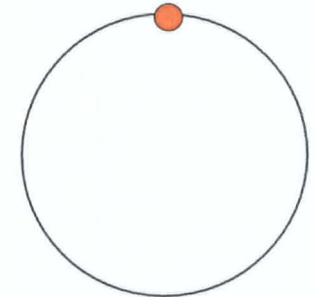
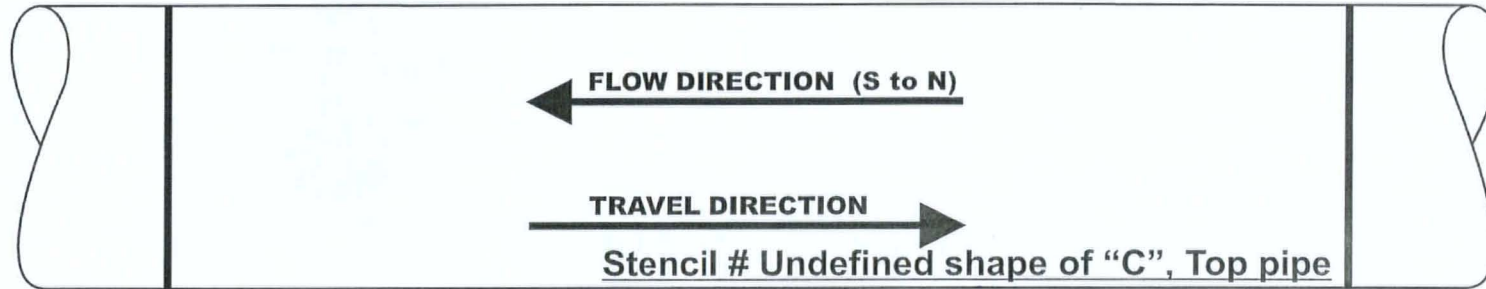
DATE: 10/05/2010

PIPE SEGMENT: 023

GW # 022 Footage: 407'

GW # 023 Footage: 433'

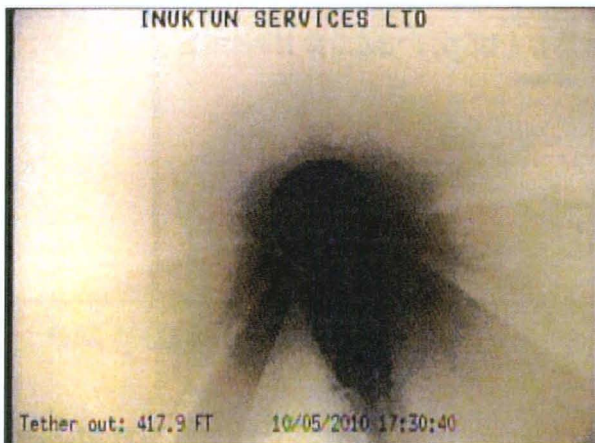
LS POSITION



LONG SEAM TYPE: DSAW SSAW ERW SMLS FLASH LAP UNK

COMMENTS: Sag with liquid @ 433', GW# 23

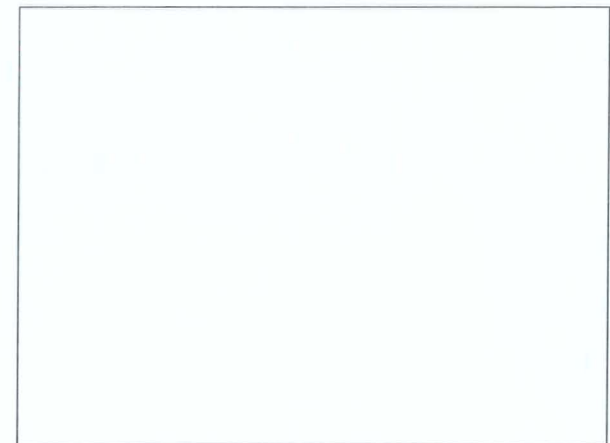
GPS:



GPS:



GPS:



View of low spot with fluid.

*** Information listed in this document is PRIVILEGED & CONFIDENTIAL**

LINE - 132 REMOTE VIDEO INSPECTION

CAMERA ENTRY: Catalpa Way drive to Earl ave.

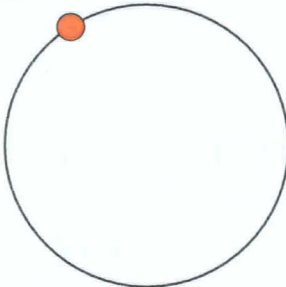
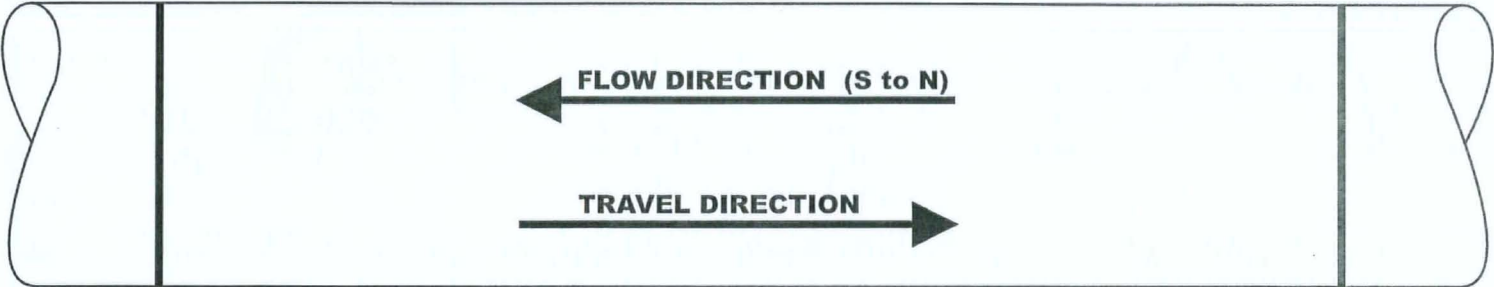
DATE: 10/05/2010

PIPE SEGMENT: 026

GW # 025 Footage: 466'

GW # 026 Footage: 468'

LS POSITION



LONG SEAM TYPE: DSAW SSAW ERW SMLS FLASH LAP UNK

COMMENTS: Short spool

GPS:

GPS:

GPS:

*** Information listed in this document is PRIVILEGED & CONFIDENTIAL**

LINE - 132 REMOTE VIDEO INSPECTION

CAMERA ENTRY: Catalpa Way drive to Earl ave.

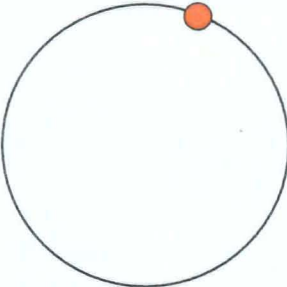
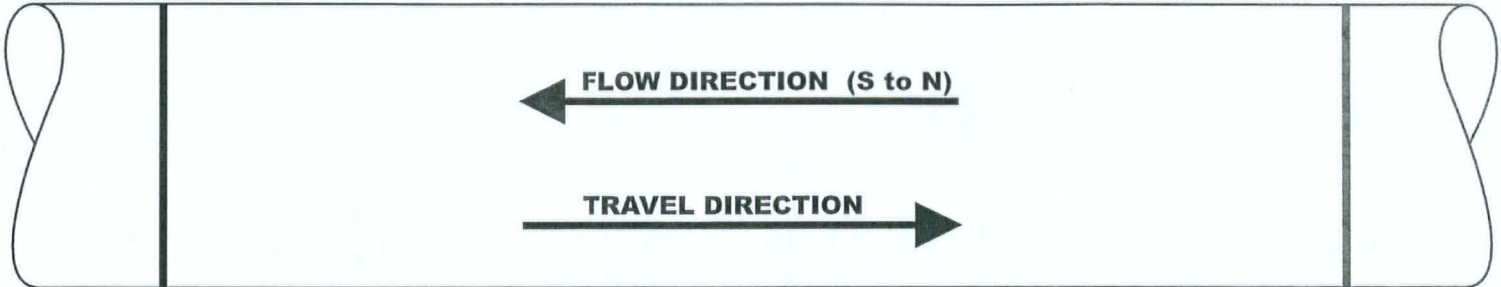
DATE: 10/05/2010

PIPE SEGMENT: 028

GW # 027 Footage: 471'

GW # 028 Footage: 473.5'

LS POSITION



LONG SEAM TYPE: DSAW SSAW ERW SMLS FLASH LAP UNK

COMMENTS: Short spool, 24"

GPS:

GPS:

GPS:

*** Information listed in this document is PRIVILEGED & CONFIDENTIAL**

LINE - 132 REMOTE VIDEO INSPECTION

CAMERA ENTRY: Catalpa Way drive to Earl ave.

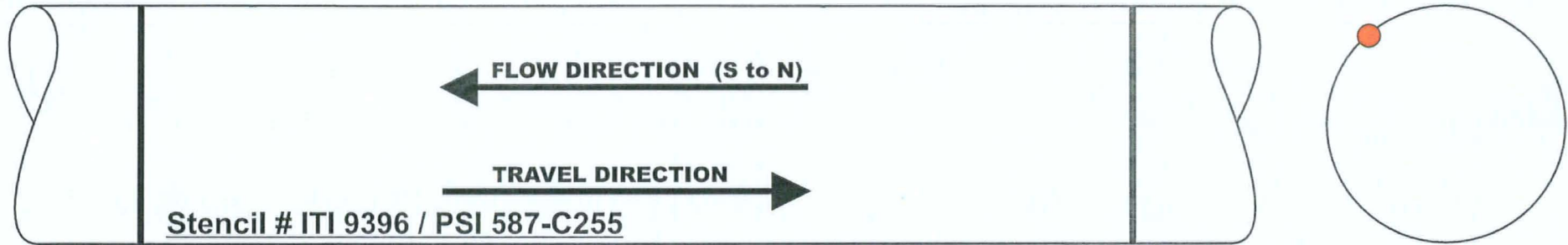
DATE: 10/05/2010

PIPE SEGMENT: 030

GW # 029 Footage: 480'

GW # 030 Footage: 483'

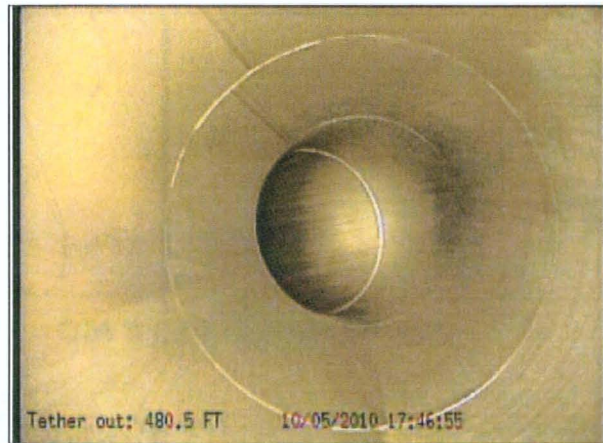
LS POSITION



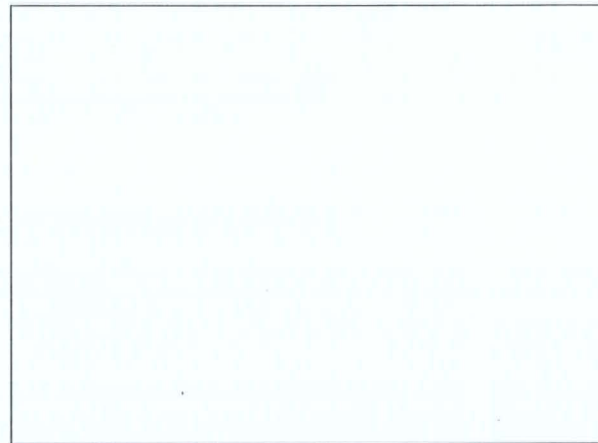
LONG SEAM TYPE: DSAW SSAW ERW SMLS FLASH LAP UNK

COMMENTS: Small spool.

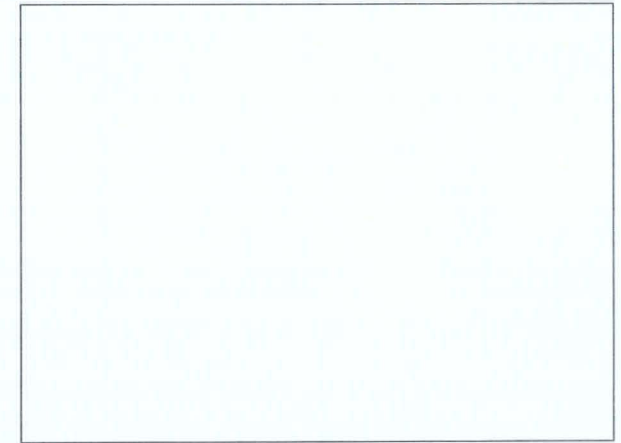
GPS:



GPS:



GPS:



View of small spool @ 480'.

*** Information listed in this document is PRIVILEGED & CONFIDENTIAL**

LINE - 132 REMOTE VIDEO INSPECTION

CAMERA ENTRY: Catalpa way drive to Healy Station

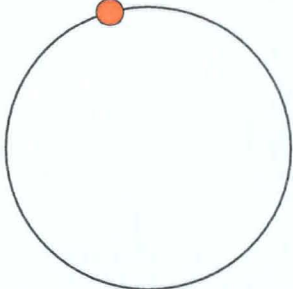
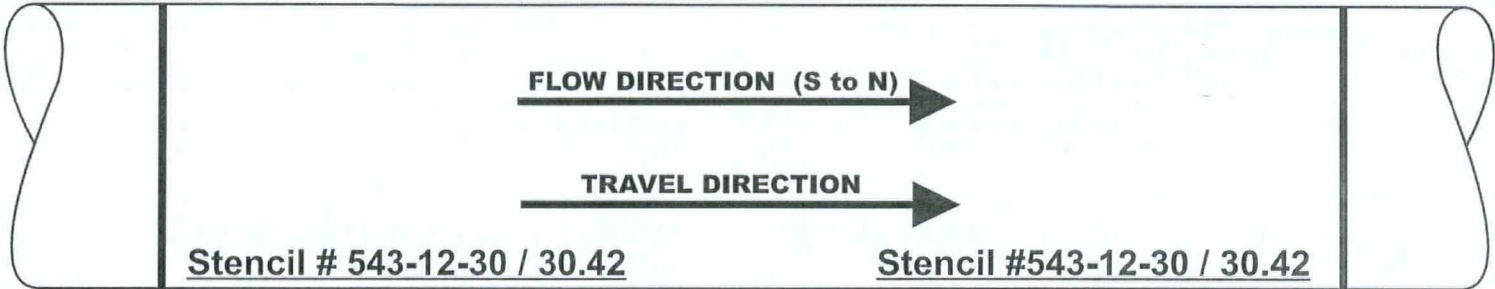
DATE: 10/06/2010

PIPE SEGMENT: 002

GW # 001 Footage: 25.5'

GW # 002 Footage: 57'

LS POSITION



LONG SEAM TYPE: DSAW SSAW ERW SMLS FLASH LAP UNK

COMMENTS: Standing liquid in Pipe @ GW-2

GPS:

GPS:

GPS:

*** Information listed in this document is PRIVILEGED & CONFIDENTIAL**

LINE - 132 REMOTE VIDEO INSPECTION

CAMERA ENTRY: Catalpa way drive to Healy Station

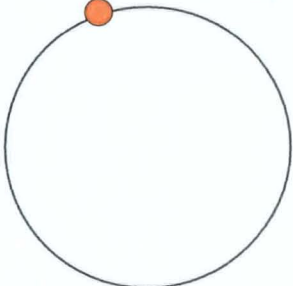
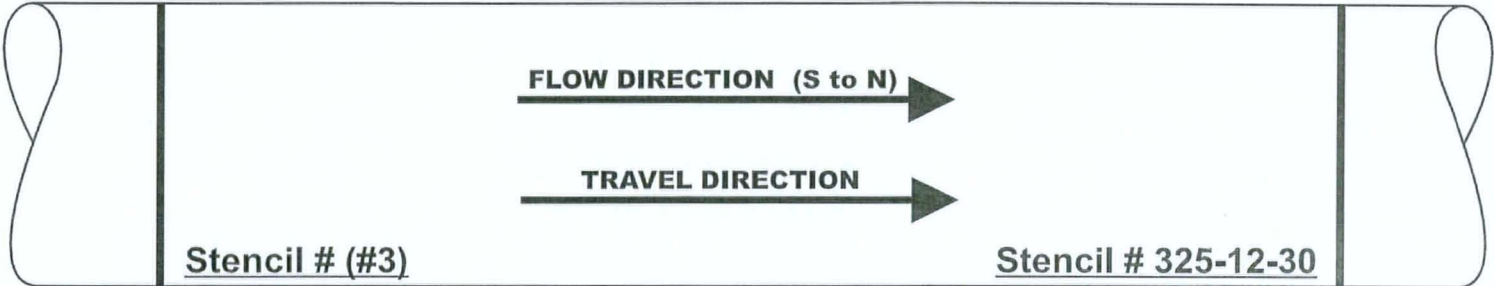
DATE: 10/06/2010

PIPE SEGMENT: 003

GW # 002 Footage: 57'

GW # 003 Footage: 88'

LS POSITION



LONG SEAM TYPE: DSAW SSAW ERW SMLS FLASH LAP UNK

COMMENTS: Liquid in Pipe - Entire Length of Spool Piece

GPS:

GPS:

GPS:

*** Information listed in this document is PRIVILEGED & CONFIDENTIAL**

LINE - 132 REMOTE VIDEO INSPECTION

CAMERA ENTRY: Catalpa way drive to Healy Station

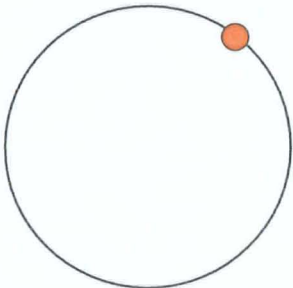
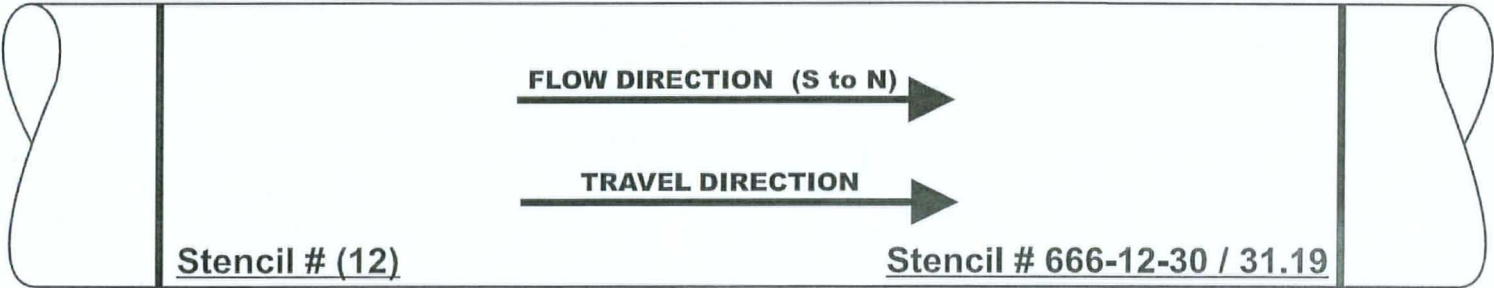
DATE: 10/06/2010

PIPE SEGMENT: 011

GW # 010 Footage: 215.5'

GW # 011 Footage: 247'

LS POSITION



LONG SEAM TYPE: DSAW SSAW ERW SMLS FLASH LAP UNK

COMMENTS: Liquid @ GW-11

GPS:

GPS:

GPS:

*** Information listed in this document is PRIVILEGED & CONFIDENTIAL**

LINE - 132 REMOTE VIDEO INSPECTION

CAMERA ENTRY: Catalpa way drive to Healy Station

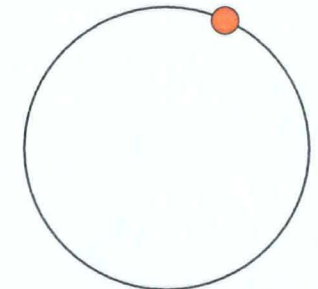
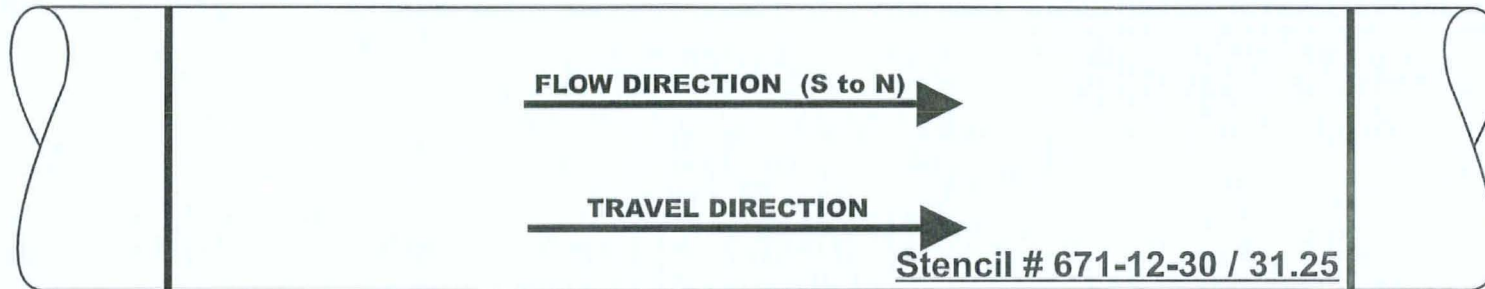
DATE: 10/06/2010

PIPE SEGMENT: 022

GW # 021 Footage: 503'

GW # 022 Footage: 535'

LS POSITION



LONG SEAM TYPE: DSAW SSAW ERW SMLS FLASH LAP UNK

COMMENTS: Liquid in Pipe @ 535', GW# 22, Start 7 degree Down hill (camera reflects)

GPS:

GPS:

GPS:

*** Information listed in this document is PRIVILEGED & CONFIDENTIAL**

LINE - 132 REMOTE VIDEO INSPECTION

CAMERA ENTRY: Catalpa way drive to Healy Station

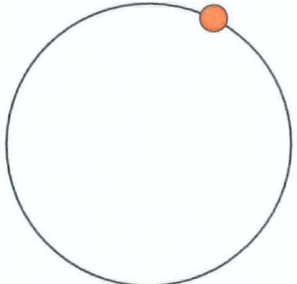
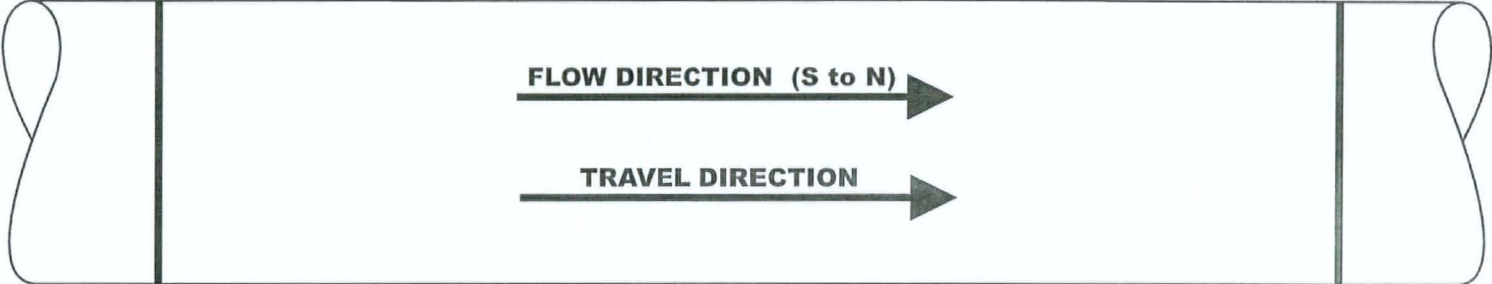
DATE: 10/06/2010

PIPE SEGMENT: 039

GW # 038 Footage: 975'

GW # 039 Footage: 779'

LS POSITION



LONG SEAM TYPE: DSAW SSAW ERW SMLS FLASH LAP UNK

COMMENTS: Short spool, 4' long

GPS: 42, @ Short spool

GPS:

GPS:

*** Information listed in this document is PRIVILEGED & CONFIDENTIAL**

LINE - 132 REMOTE VIDEO INSPECTION

CAMERA ENTRY: Catalpa way drive to Healy Station

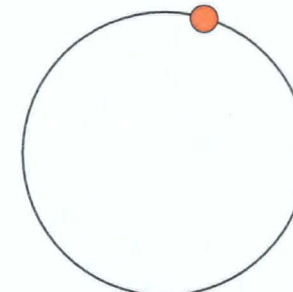
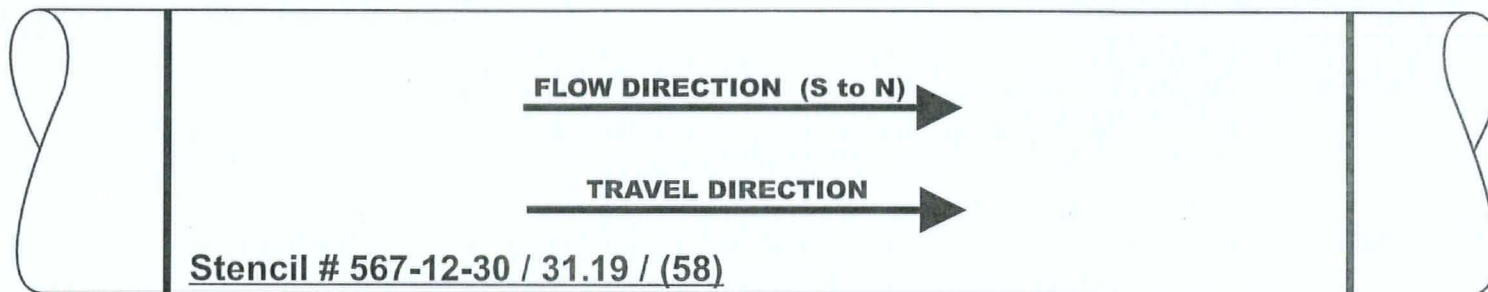
DATE: 10/06/2010

PIPE SEGMENT: 044

GW # 043 Footage: 1079'

GW # 044 Footage: 1109'

LS POSITION



LONG SEAM TYPE: DSAW SSAW ERW SMLS FLASH LAP UNK

COMMENTS: LS is not ground down @ GW# 43

GPS:

GPS:

GPS:

*** Information listed in this document is PRIVILEGED & CONFIDENTIAL**

LINE - 132 REMOTE VIDEO INSPECTION

CAMERA ENTRY: Catalpa way drive to Healy Station

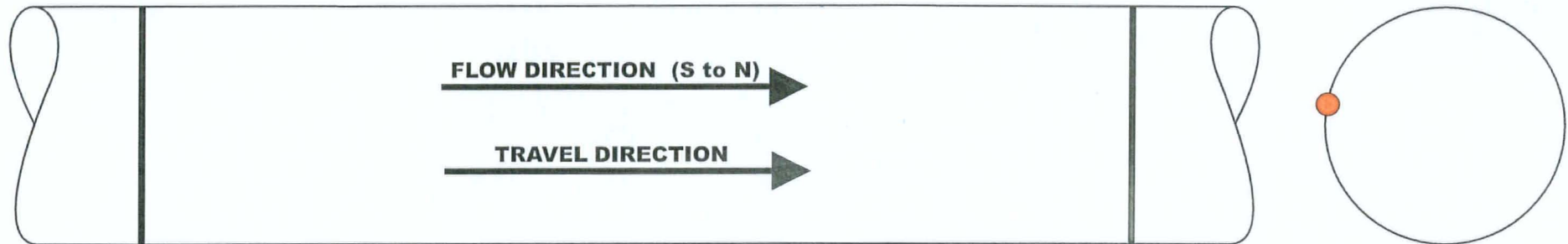
DATE: 10/06/2010

PIPE SEGMENT: 045

GW # 044 Footage: 1109'

GW # 045 Footage: 1112'

LS POSITION



LONG SEAM TYPE: DSAW SSAW ERW SMLS FLASH LAP UNK

COMMENTS: Short spool

GPS:

GPS:

GPS:

*** Information listed in this document is PRIVILEGED & CONFIDENTIAL**

LINE - 132 REMOTE VIDEO INSPECTION

CAMERA ENTRY: Catalpa way drive to Healy Station

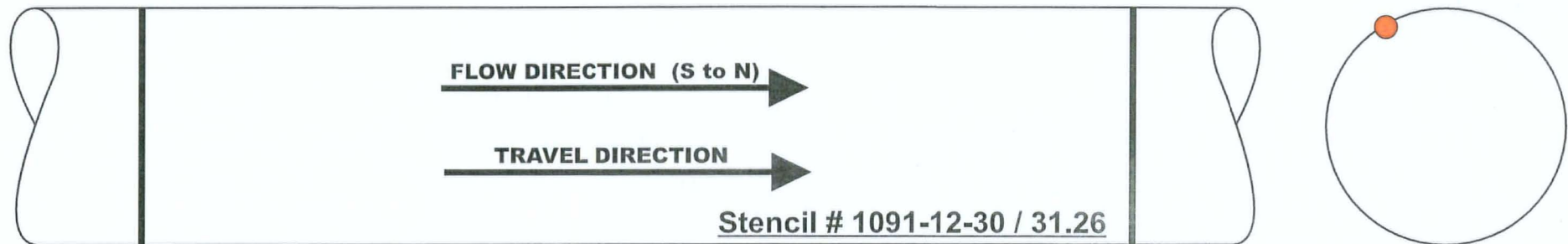
DATE: 10/06/2010

PIPE SEGMENT: 051

GW # 050 Footage: 1184'

GW # 051 Footage: 1200'

LS POSITION



LONG SEAM TYPE: DSAW SSAW ERW SMLS FLASH LAP UNK

COMMENTS: Tie-In Sleeve @GW# 50, Split seam in sleeve, Entering GIS segment 183, Dent @ 1189 - 10:00 position.

GPS: 44, @ GW# 50 - Sleeve



View of Sleeve

GPS: 45, @ 1189' - Dent



View of Dent

GPS:



*** Information listed in this document is PRIVILEGED & CONFIDENTIAL**

LINE - 132 REMOTE VIDEO INSPECTION

CAMERA ENTRY: Catalpa way drive to Healy Station

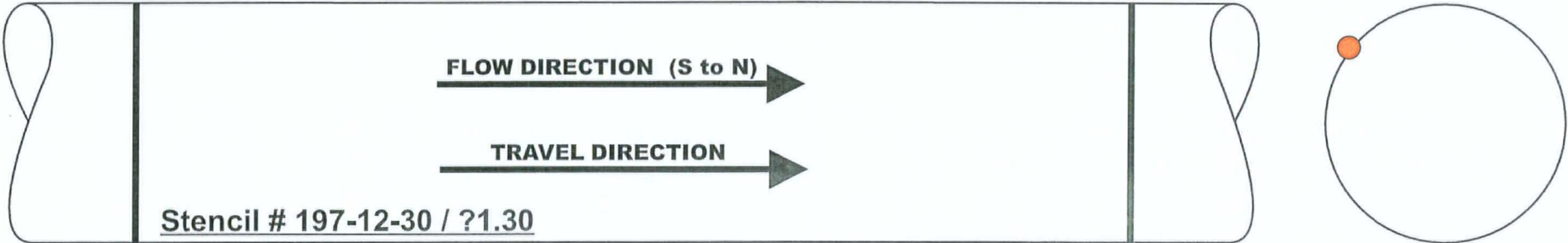
DATE: 10/06/2010

PIPE SEGMENT: 063

GW # 062 Footage: 1555'

GW # 063 Footage: 1589'

LS POSITION



LONG SEAM TYPE: DSAW SSAW ERW SMLS FLASH LAP UNK

COMMENTS: Liquid in pipe full length - 1582' liquid level increased

GPS: #46 @ GW# 62 - Rollingwood

GPS:

GPS:

*** Information listed in this document is PRIVILEGED & CONFIDENTIAL**

LINE - 132 REMOTE VIDEO INSPECTION

CAMERA ENTRY: Rollingwood dr. drive to Healy Station

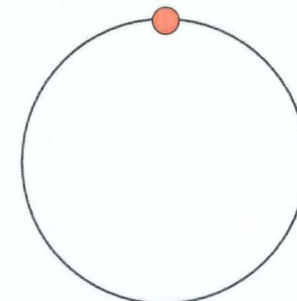
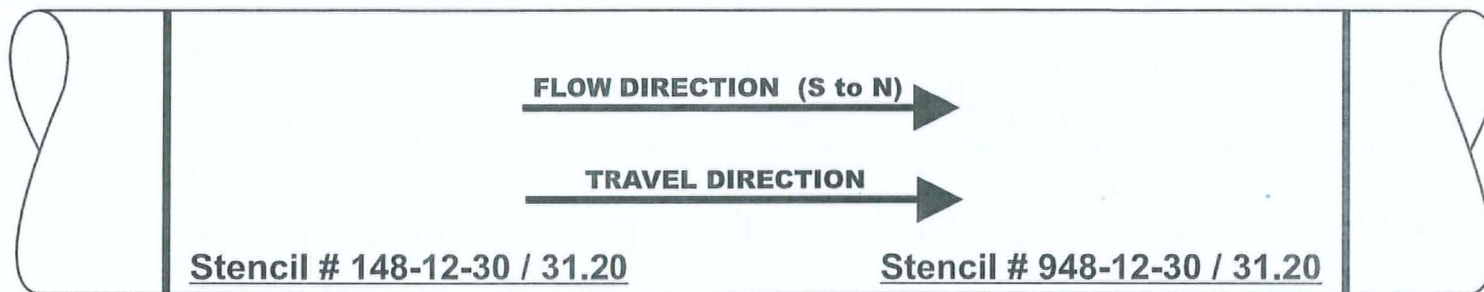
DATE: 10/08/2010

PIPE SEGMENT: 010

GW # 009 Footage: 216'

GW # 010 Footage: 247'

LS POSITION



LONG SEAM TYPE: DSAW SSAW ERW SMLS FLASH LAP UNK

COMMENTS: GW# 9 @ 216; Not back welded.

GPS:

GPS:

GPS:

*** Information listed in this document is PRIVILEGED & CONFIDENTIAL**

LINE - 132 REMOTE VIDEO INSPECTION

CAMERA ENTRY: Rollingwood dr. drive to Healy Station

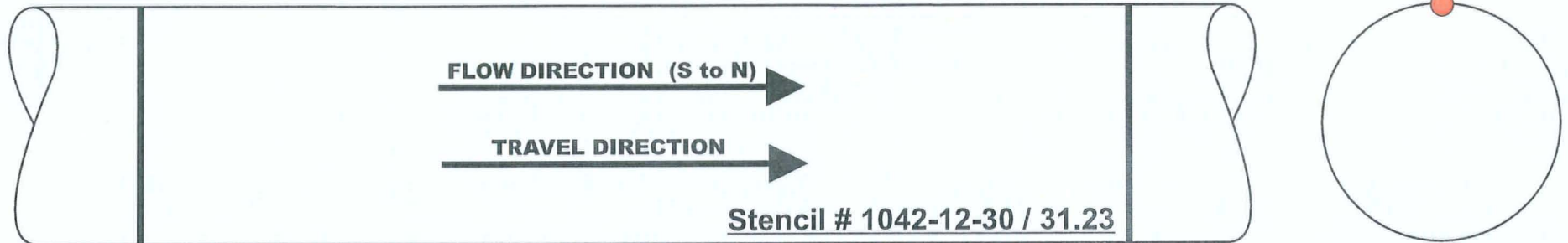
DATE: 10/08/2010

PIPE SEGMENT: 018

GW # 017 Footage: 439'

GW # 018 Footage: 443'

LS POSITION



LONG SEAM TYPE: DSAW SSAW ERW SMLS FLASH LAP UNK

COMMENTS: Approx. 4' long pipe, DSAW, Not ground @ GW# 17 439'

GPS:

GPS:

GPS:

*** Information listed in this document is PRIVILEGED & CONFIDENTIAL**

LINE - 132 REMOTE VIDEO INSPECTION

CAMERA ENTRY: Rollingwood dr. drive to Healy Station

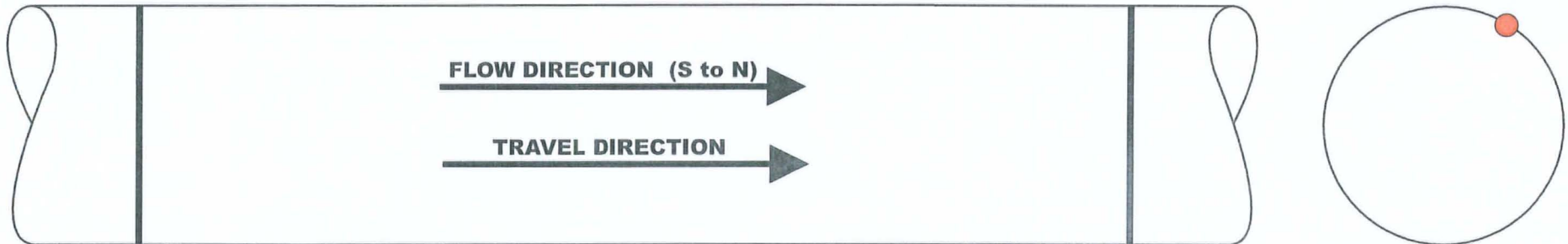
DATE: 10/08/2010

PIPE SEGMENT: 021

GW # 020 Footage: 511'

GW # 021 Footage: 540'

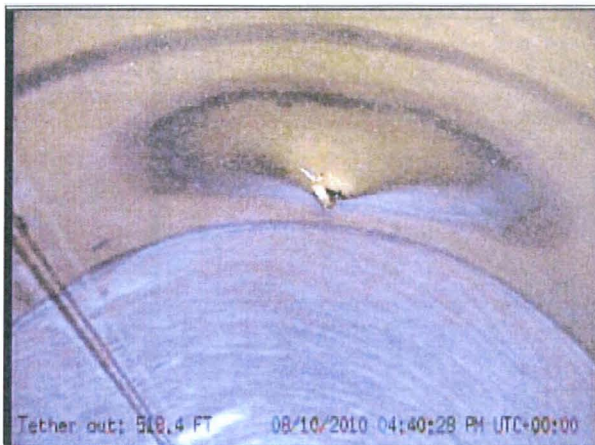
LS POSITION



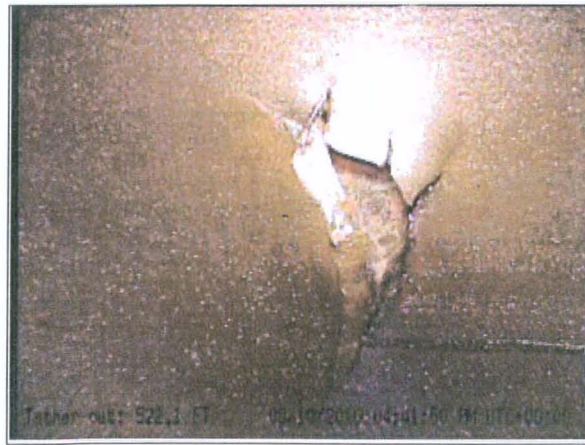
LONG SEAM TYPE: DSAW SSAW ERW SMLS FLASH LAP UNK

COMMENTS: Puncture with patch & sleeve @ 521.5', Possible weld bead ID emanating from indent.

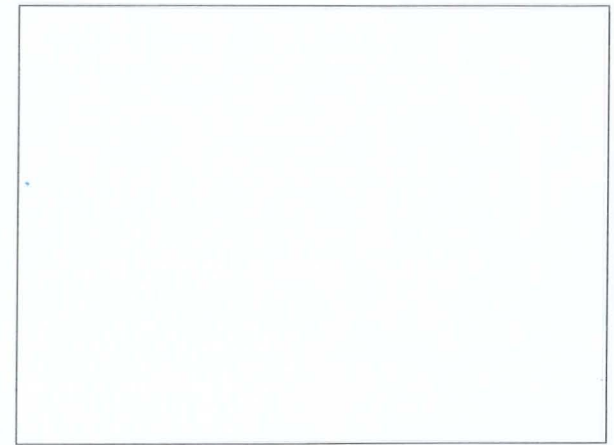
GPS:



GPS:



GPS:



View of puncture with patch & sleeve @ 521.5'

*** Information listed in this document is PRIVILEGED & CONFIDENTIAL**