

**Docket No. SA-534**

**Exhibit No. 2-AQ**

**NATIONAL TRANSPORTATION SAFETY BOARD**

**Washington, D.C.**

1956 DRAWINGS RELOCATION L132  
(NTSB\_001-002-S1 AND NTSB\_010-005)

(4 Pages)

**PACIFIC GAS AND ELECTRIC COMPANY  
San Bruno Gas Transmission Line Incident  
Data Response**

PG&E Data Request No.:	NTSB_001-001		
PG&E File Name:	San Bruno GT Line Incident_DR_NTSB_001-001		
Request Date:	September 10, 2010	Requester DR No.:	001
Date Sent:	September 10, 2010	Requesting Party:	NTSB
PG&E Witness:		Requester:	Carl Gunther

**QUESTION 2**

What is the pipe specification including mill specifications and counting information?

**ANSWER 2-SUPPLEMENT**

Enclosed is a June 6, 1956 drawing "installation of gas main to supply Crestmoor Park No 7 San Bruno" (1 page).

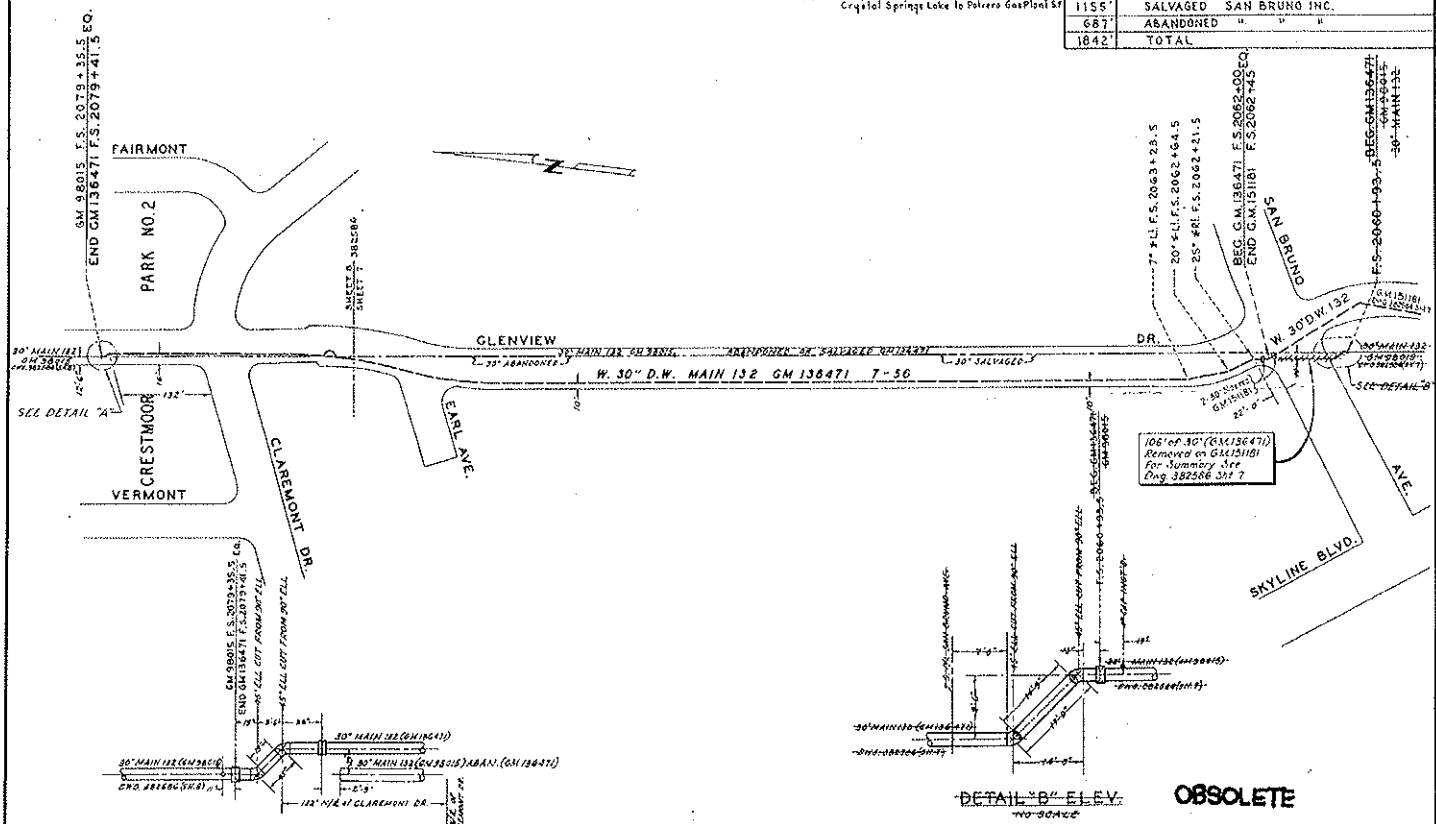
August 7, 1959 drawing "Relocated 30" main 132 in. Glenview Dr. San Bruno Inc. GM 136471" (1 page).

STARTED-----8-14-58  
 OPERATION---7-31-56  
 COMPLETED--9-4-56

REFERENCE DRAWINGS

3826 06 Shls. 14 6----24' 30" Gas Transmission Main 132  
 Crystal Springs Lake to Palero Gas Plant St

SUMMARY GM 136471 MAIN 132	
MAIN INSTALLED SAN FRANCISCO DIVISION	
LOCATION	
1848'	SAN BRUNO INC.
MAIN REMOVED SAN FRANCISCO DIVISION	
LOCATION	
1155'	SALVAGED SAN BRUNO INC.
687'	ABANDONED " " "
1842'	TOTAL



DETAIL "A" PLAN VIEW  
NO SCALE

DETAIL "B" ELEV.  
NO SCALE

**OBSOLETE**

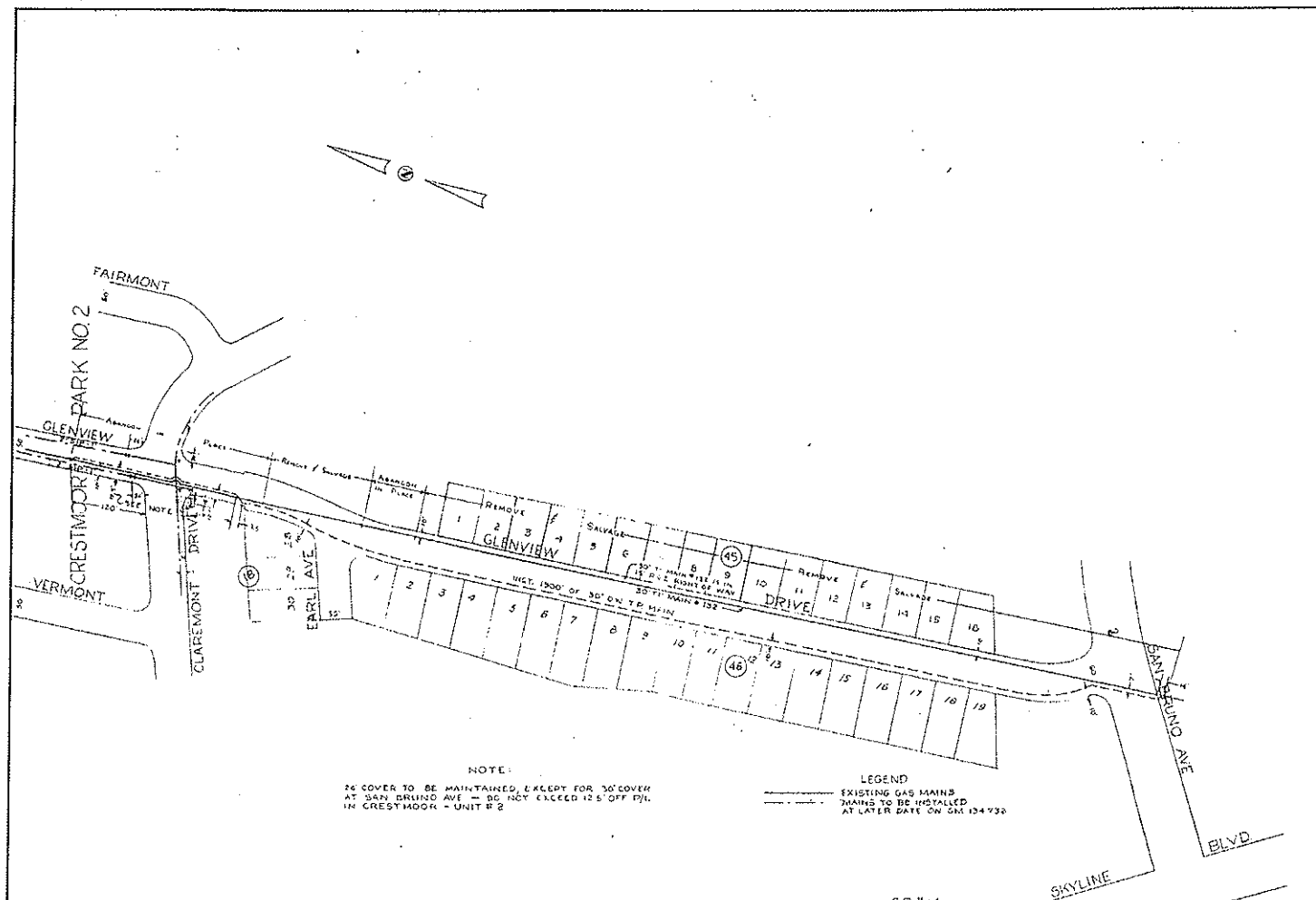
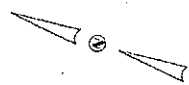
T. S. R. S. W. M. D. B. & M.

TABLE OF CHANGES			
NO.	DATE	DESCRIPTION	APPRD.
1	4-23-56	ASRD Work Done on GM 136471	
2	4-11-58	OBSOLETE	CAD

APPROVED BY	GM. 136471
	DRAWING LIST
	BY Dept. of Gas Opns
	DR. S. S. 12.12.58
	DR. J. W.
	DATE 6-7-59
	SCALE
	3/16"

RELOCATED 30" MAIN 132 IN  
 GLENVIEW DR. SAN BRUNO INC.  
 GM 136471  
 DEPARTMENT OF GAS OPERATIONS  
 PACIFIC GAS AND ELECTRIC COMPANY  
 SAN FRANCISCO, CALIFORNIA

SAN BRUNO INC. SAN MATEO COUNTY	
FILE OF MATERIAL	
EXTERIOR	
NOTIFIED BY	
282764	SHEET
2	CHANGE



NOTE:  
 26 COVER TO BE MAINTAINED, EXCEPT FOR 30' COVER  
 AT SAN BRUNO AVE - DO NOT EXCEED 12.5' OFF DIA.  
 IN CRESTMOOR - UNIT # 2

LEGEND  
 - - - - - EXISTING GAS MAINS  
 \_\_\_\_\_ MAINS TO BE INSTALLED  
 AT LATER DATE ON GAS 124 932

SB # 14

NO.	DATE	DESCRIPTION	APPR.
TABLE OF CHANGES			

APPROVED BY	GM
BY	DEPT. H.
DATE	6. 26. 56
SCALE	1" = 100'

INSTALLATION OF GAS MAIN TO  
 SUPPLY CRESTMOOR PARK NO. 7  
 SAN BRUNO

PACIFIC GAS AND ELECTRIC COMPANY  
 GAS DEPT. SAN FRANCISCO, CALIFORNIA 5F DIV.

BILL OF MATERIAL	
REVISIONS	APPROVED BY
SHEET NO.	SHEETS
TECHNICAL NUMBER	CHANGE
LE 12073	

(T.3 S.R.5 W.M.D.B.&M.)

CRESTMOR PARK NO. 1

R A N C H O

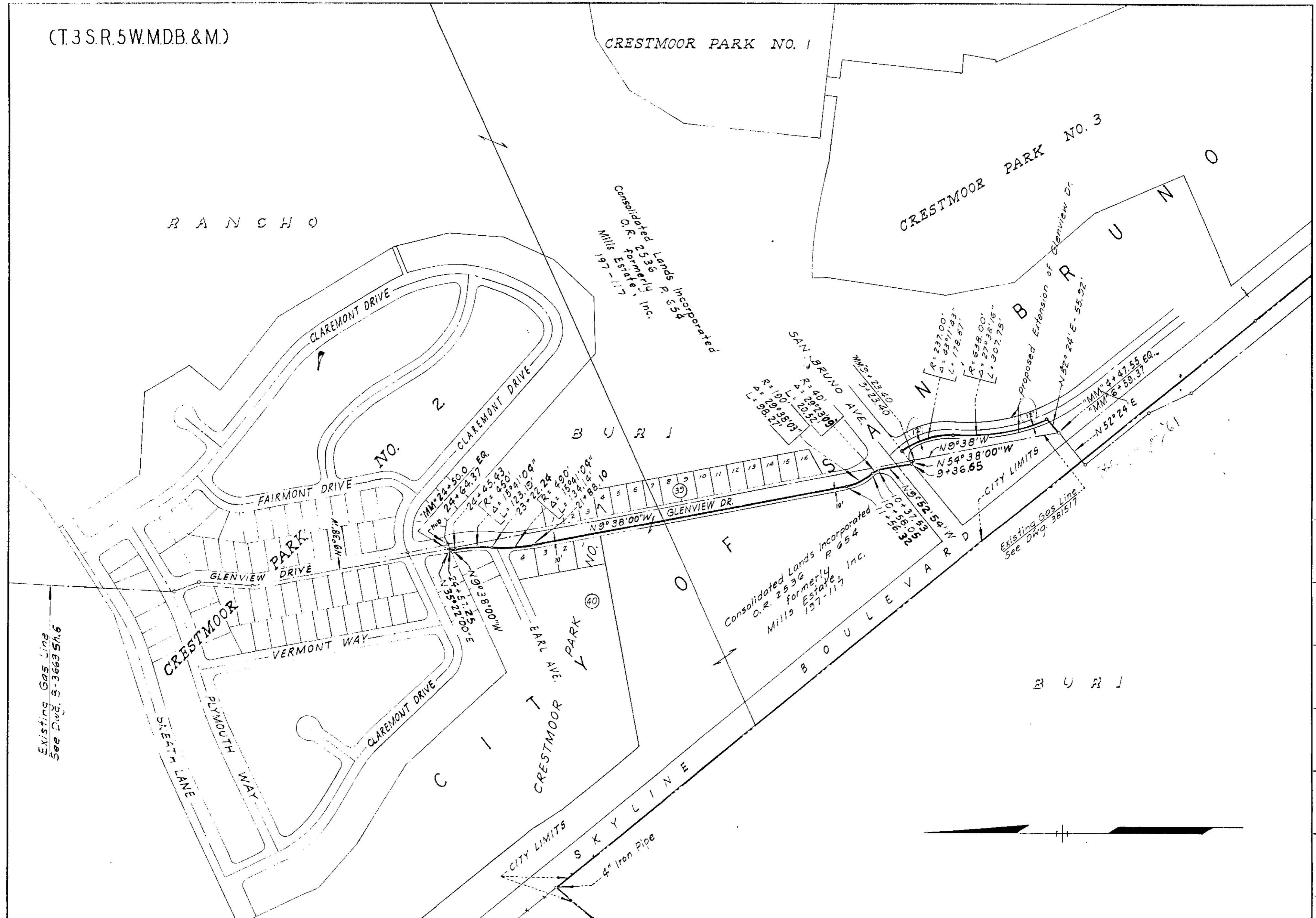
CRESTMOR PARK NO. 3

Consolidated Lands Incorporated  
O.R. 2536  
Formerly  
Mills Estate, Inc.  
197-117

Consolidated Lands Incorporated  
O.R. 2536  
Formerly  
Mills Estate, Inc.  
197-117

Existing Gas Line  
See DWG. 38157

Existing Gas Line  
See DWG. S-3669 Sh. 6



SAN MATEO COUNTY

NO.	DATE	DESCRIPTION	APPRD.
2	7-17-61	Added Reroute from San Bruno Ave to MM 3-533	R.L.A.
1	9-27-56	City Limits added	H.S.M.

APPROVED BY  
 AUTHORIZATION  
 GM 136471  
 BY McAllister  
 DR. A.M.P. TR. L.O.  
 CH. A.H.P.  
 G.K.  
 DATE 9-20-56  
 SCALES  
 1" = 200'

REROUTE OF PORTION OF  
 MOUNTAIN VIEW—POTRERO GAS LINE  
 THROUGH CRESTMOR PARK NO.7, SAN BRUNO  
 LINE 132  
 PACIFIC GAS AND ELECTRIC COMPANY  
 SAN FRANCISCO, CALIFORNIA

PROFILE NUMBER	
SUPERSEDES SUPERSEDED BY	
SHEET NO. / SHEETS	
DRAWING NUMBER CHANGE	B-4529 2