

Docket No. SA-534

Exhibit No. 2-AP

NATIONAL TRANSPORTATION SAFETY BOARD

Washington, D.C.

NTSB_008-004& 004S1
GM 151181 AND 1961 1132 RELOCATION PROJECT
DOCUMENTATION EXCERPTS

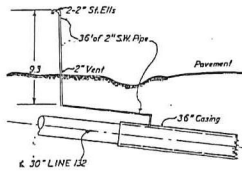
(8 Pages)

132-382586-7

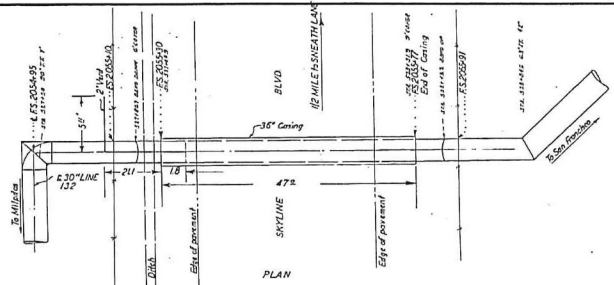
MATCHING LINE

SHEET No. 8

F.S. 2074+99
 2" PIPE-SUPPORT
 (GEE-DWG-382750) L.S.
 F.S. 2075+81 END-SPAN-101 87'-2.4'
 F.S. 2074+60 BEGIN-SPAN-101 87'-2.4'
 F.S. 2074+25 VERT-ANGLE



ELEVATION



PLAN

DETAIL OF HIGHWAY CROSSING SOUTH OF SHEATH LANE
 No Scale

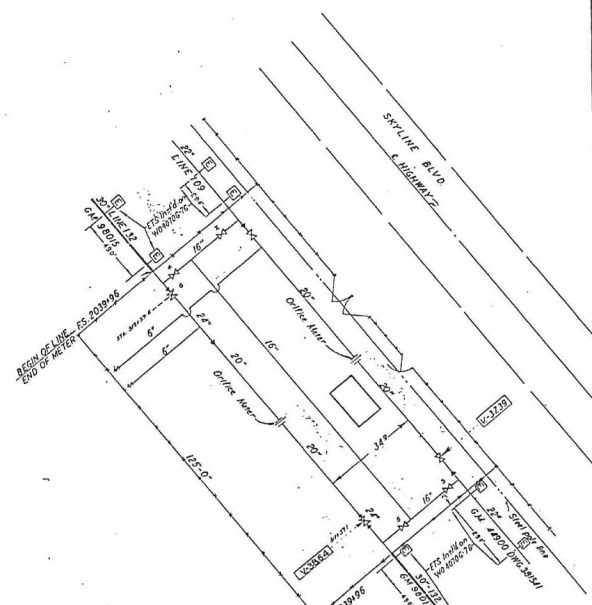
SUMMARY OF G.M. 1518181 LINE 132
 LINE INSTALLED SAN FRANCISCO DIVISION
 61'-30" San Bruno Inc.
 LINE REMOVED SAN FRANCISCO DIVISION
 106'-30" (S.M. 156477) San Bruno Inc.
 166'-30" (G.M. 98015)
 * 570'-30" Total Line Removed San Bruno Inc.
 Started: 7-31-61 In Open: 8-22-61 Completed: 9-30-61
 * Of Total Footage, 496' Salvaged

SAN BRUNO INC.
 BEG. G.M. 138477 S. 2082+00 EQ.
 END G.M. 1518181 F.S. 2086+43

SAN BRUNO INC.
 BEG. G.M. 1518181
 END G.M. 98015

RANCHO BURI BURI

SAN ANDREAS RESERVOIR



SAN ANDREAS METER STATION
 FOR DETAIL SEE DWG-382479
 No Scale

SAN FRANCISCO DIV. (T4SR5W MDB & M)

24" & 30" GAS TRANSMISSION LINE-132
 CRYSTAL SPRINGS LAKE TO
 POTRERO GAS PLANT S.F.
 G.M. 98015

PACIFIC GAS AND ELECTRIC CO.
 SAN FRANCISCO, CALIFORNIA

NO.	DATE	DESCRIPTION	BY	APP'D.
1	1-15-61	Issue W4470 G.T.C. (1)	CCS	
2	1-15-61	Note G.M. 485247-75 AS	CCS	
3	1-15-61	Added San. G.M. 159250	CCS	
4	1-15-61	Added W.G. 4972-A		
5	1-15-61	Added Work Done on G.M. 1518181		
6	1-15-61	Added 2nd and 3rd Lines		
7	1-15-61	Added Work Done on G.M. 138477		
8	1-15-61	CITY LIMITS		
9	1-15-61	REVISIONS		

TABLE OF CHANGES
 USE ONLY PRINTS SHOWING LATEST CHANGES

APPROVED BY: [Signature]
 SUPERVISOR: [Signature]
 DATE: 9-23-49
 SCALE: 1"=300'

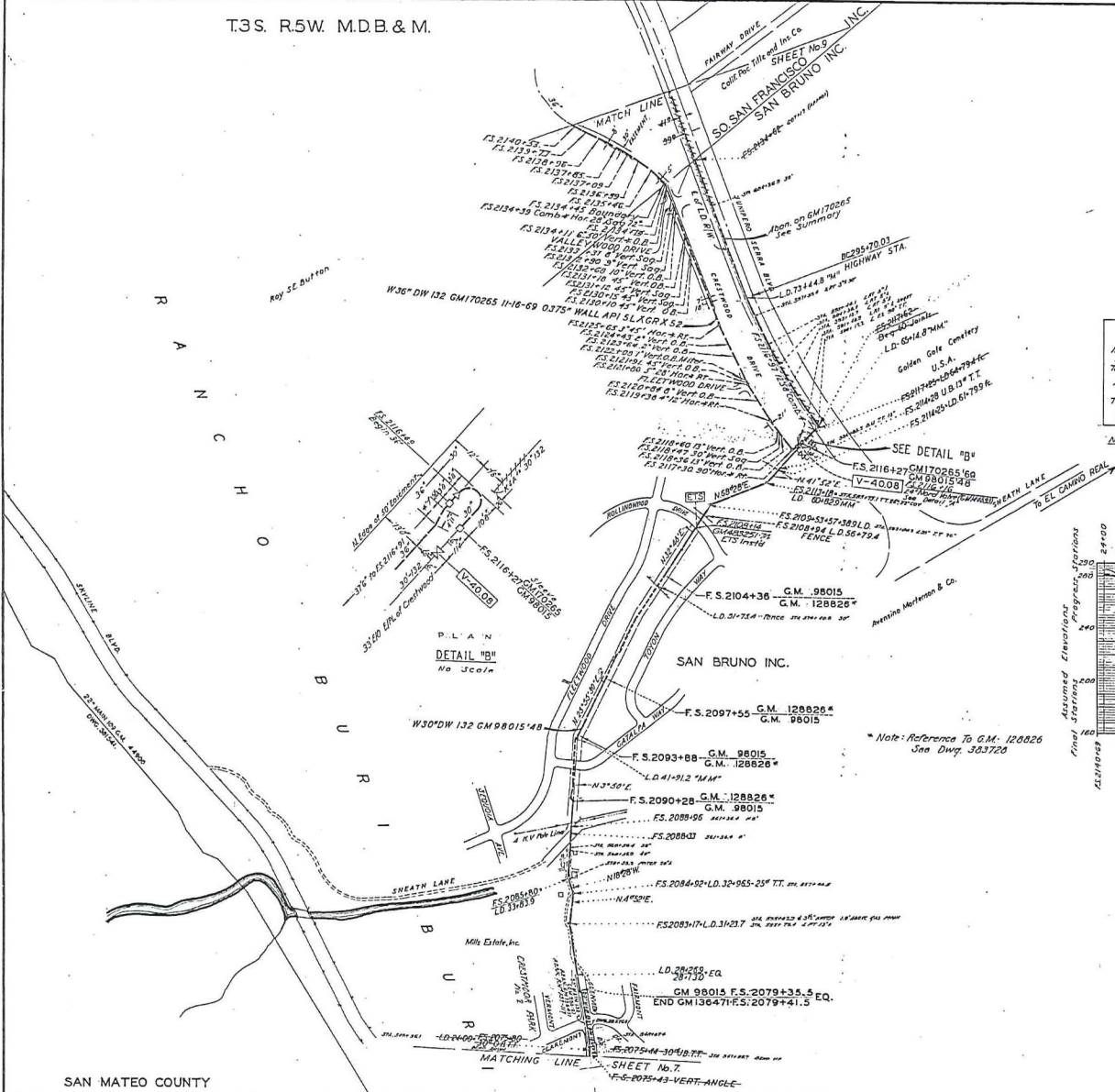
ALL OF MATERIAL DRAWING NUMBER CHANGE
 382586 9

SAN MATEO COUNTY

MATCHING LINE

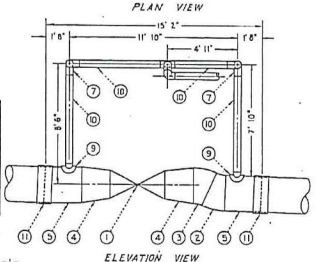
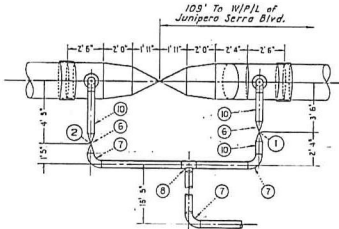
SHEET No. 6

T.3S. R.5W. M.D.B.&M.



BILL OF MATERIAL - GM144893

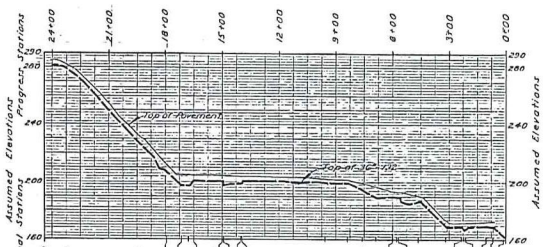
Item	Quan.	Description
1	1	24" Valve, Nord. Fig. 4249 1/2 with elevated worm gearing.
2	1	30" Elbow, weld, 25" 35" (cut from 70" Elbow).
3	1	30" Elbow, weld, 28" 15" (cut from 70" Elbow).
4	2	30" x 24" Reducer.
5	5	30" Pipe, bare.
6	2	5" Valve, Nord. Fig. 4249 1/2 with elevated worm gearing.
7	5	6" Elbow, 90° (1 Salvaged and Reused).
8	1	6" x 6" Tee.
9	2	8" x 30" Bonney Weld-Off Let.
10	43	6" DIW Pipe, pat. line.
11	2	30" x 12" Sleeve.



SUMMARY GM170265
 Inst 25' of 30" 132 of 36" Total: 1816' San Bruno Inc.
 6' of 30" 60252 of 36" Total: 1824' So. San Francisco Inc.
 Total 36" = 3616"
 Above 1035' of 30" 132 (GM 38015-48) San Bruno Inc.
 221' of 30" 132 (GM 38015-48) So. San Francisco Inc.
 Total 3045'
 Started 6-3-68 Operation 11-16-69 Completed 12-31-69

Note: Final Stations are based on Horizontal distances furnished by General Construction Dept.

DETAIL "A" F.S. 2116 + 16
 GM 144893
 SCALE: 1" = 1'

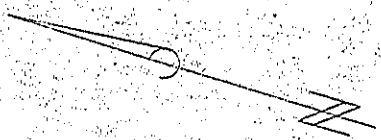


PROFILE OF GM170265
 36"-132
 Scale: Horiz. 1" = 300'
 Vert. 1" = 40'

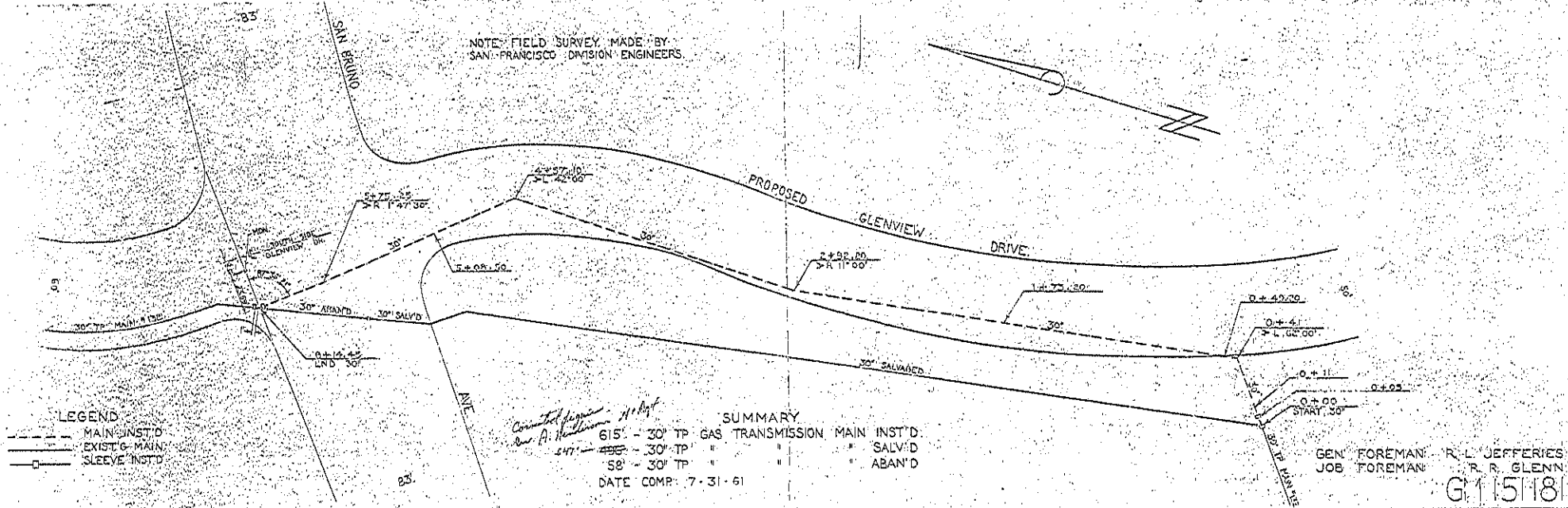
TABLE OF CHANGES

NO.	DATE	DESCRIPTION	APPROVED
1	10/20/68	Work on D.M. 124500, added	
2	11/15/68	Added work done on GM 134831	
3	12/15/68	Added work done on GM 134831	
4	1/15/69	Added work done on GM 134831	
5	2/15/69	Added work done on GM 134831	
6	3/15/69	Added work done on GM 134831	
7	4/15/69	Added work done on GM 134831	
8	5/15/69	Added work done on GM 134831	
9	6/15/69	Added work done on GM 134831	
10	7/15/69	Added work done on GM 134831	
11	8/15/69	Added work done on GM 134831	
12	9/15/69	Added work done on GM 134831	
13	10/15/69	Added work done on GM 134831	
14	11/15/69	Added work done on GM 134831	
15	12/15/69	Added work done on GM 134831	
16	1/15/70	Added work done on GM 134831	
17	2/15/70	Added work done on GM 134831	
18	3/15/70	Added work done on GM 134831	
19	4/15/70	Added work done on GM 134831	
20	5/15/70	Added work done on GM 134831	
21	6/15/70	Added work done on GM 134831	
22	7/15/70	Added work done on GM 134831	
23	8/15/70	Added work done on GM 134831	
24	9/15/70	Added work done on GM 134831	
25	10/15/70	Added work done on GM 134831	
26	11/15/70	Added work done on GM 134831	
27	12/15/70	Added work done on GM 134831	
28	1/15/71	Added work done on GM 134831	
29	2/15/71	Added work done on GM 134831	
30	3/15/71	Added work done on GM 134831	
31	4/15/71	Added work done on GM 134831	
32	5/15/71	Added work done on GM 134831	
33	6/15/71	Added work done on GM 134831	
34	7/15/71	Added work done on GM 134831	
35	8/15/71	Added work done on GM 134831	
36	9/15/71	Added work done on GM 134831	
37	10/15/71	Added work done on GM 134831	
38	11/15/71	Added work done on GM 134831	
39	12/15/71	Added work done on GM 134831	
40	1/15/72	Added work done on GM 134831	
41	2/15/72	Added work done on GM 134831	
42	3/15/72	Added work done on GM 134831	
43	4/15/72	Added work done on GM 134831	
44	5/15/72	Added work done on GM 134831	
45	6/15/72	Added work done on GM 134831	
46	7/15/72	Added work done on GM 134831	
47	8/15/72	Added work done on GM 134831	
48	9/15/72	Added work done on GM 134831	
49	10/15/72	Added work done on GM 134831	
50	11/15/72	Added work done on GM 134831	
51	12/15/72	Added work done on GM 134831	
52	1/15/73	Added work done on GM 134831	
53	2/15/73	Added work done on GM 134831	
54	3/15/73	Added work done on GM 134831	
55	4/15/73	Added work done on GM 134831	
56	5/15/73	Added work done on GM 134831	
57	6/15/73	Added work done on GM 134831	
58	7/15/73	Added work done on GM 134831	
59	8/15/73	Added work done on GM 134831	
60	9/15/73	Added work done on GM 134831	
61	10/15/73	Added work done on GM 134831	
62	11/15/73	Added work done on GM 134831	
63	12/15/73	Added work done on GM 134831	
64	1/15/74	Added work done on GM 134831	
65	2/15/74	Added work done on GM 134831	
66	3/15/74	Added work done on GM 134831	
67	4/15/74	Added work done on GM 134831	
68	5/15/74	Added work done on GM 134831	
69	6/15/74	Added work done on GM 134831	
70	7/15/74	Added work done on GM 134831	
71	8/15/74	Added work done on GM 134831	
72	9/15/74	Added work done on GM 134831	
73	10/15/74	Added work done on GM 134831	
74	11/15/74	Added work done on GM 134831	
75	12/15/74	Added work done on GM 134831	
76	1/15/75	Added work done on GM 134831	
77	2/15/75	Added work done on GM 134831	
78	3/15/75	Added work done on GM 134831	
79	4/15/75	Added work done on GM 134831	
80	5/15/75	Added work done on GM 134831	
81	6/15/75	Added work done on GM 134831	
82	7/15/75	Added work done on GM 134831	
83	8/15/75	Added work done on GM 134831	
84	9/15/75	Added work done on GM 134831	
85	10/15/75	Added work done on GM 134831	
86	11/15/75	Added work done on GM 134831	
87	12/15/75	Added work done on GM 134831	
88	1/15/76	Added work done on GM 134831	
89	2/15/76	Added work done on GM 134831	
90	3/15/76	Added work done on GM 134831	
91	4/15/76	Added work done on GM 134831	
92	5/15/76	Added work done on GM 134831	
93	6/15/76	Added work done on GM 134831	
94	7/15/76	Added work done on GM 134831	
95	8/15/76	Added work done on GM 134831	
96	9/15/76	Added work done on GM 134831	
97	10/15/76	Added work done on GM 134831	
98	11/15/76	Added work done on GM 134831	
99	12/15/76	Added work done on GM 134831	
100	1/15/77	Added work done on GM 134831	
101	2/15/77	Added work done on GM 134831	
102	3/15/77	Added work done on GM 134831	
103	4/15/77	Added work done on GM 134831	
104	5/15/77	Added work done on GM 134831	
105	6/15/77	Added work done on GM 134831	
106	7/15/77	Added work done on GM 134831	
107	8/15/77	Added work done on GM 134831	
108	9/15/77	Added work done on GM 134831	
109	10/15/77	Added work done on GM 134831	
110	11/15/77	Added work done on GM 134831	
111	12/15/77	Added work done on GM 134831	
112	1/15/78	Added work done on GM 134831	
113	2/15/78	Added work done on GM 134831	
114	3/15/78	Added work done on GM 134831	
115	4/15/78	Added work done on GM 134831	
116	5/15/78	Added work done on GM 134831	
117	6/15/78	Added work done on GM 134831	
118	7/15/78	Added work done on GM 134831	
119	8/15/78	Added work done on GM 134831	
120	9/15/78	Added work done on GM 134831	
121	10/15/78	Added work done on GM 134831	
122	11/15/78	Added work done on GM 134831	
123	12/15/78	Added work done on GM 134831	
124	1/15/79	Added work done on GM 134831	
125	2/15/79	Added work done on GM 134831	
126	3/15/79	Added work done on GM 134831	
127	4/15/79	Added work done on GM 134831	
128	5/15/79	Added work done on GM 134831	
129	6/15/79	Added work done on GM 134831	
130	7/15/79	Added work done on GM 134831	
131	8/15/79	Added work done on GM 134831	
132	9/15/79	Added work done on GM 134831	
133	10/15/79	Added work done on GM 134831	
134	11/15/79	Added work done on GM 134831	
135	12/15/79	Added work done on GM 134831	
136	1/15/80	Added work done on GM 134831	
137	2/15/80	Added work done on GM 134831	
138	3/15/80	Added work done on GM 134831	
139	4/15/80	Added work done on GM 134831	
140	5/15/80	Added work done on GM 134831	
141	6/15/80	Added work done on GM 134831	
142	7/15/80	Added work done on GM 134831	
143	8/15/80	Added work done on GM 134831	
144	9/15/80	Added work done on GM 134831	
145	10/15/80	Added work done on GM 134831	
146	11/15/80	Added work done on GM 134831	
147	12/15/80	Added work done on GM 134831	
148	1/15/81	Added work done on GM 134831	
149	2/15/81	Added work done on GM 134831	
150	3/15/81	Added work done on GM 134831	
151	4/15/81	Added work done on GM 134831	
152	5/15/81	Added work done on GM 134831	
153	6/15/81	Added work done on GM 134831	
154	7/15/81	Added work done on GM 134831	
155	8/15/81	Added work done on GM 134831	
156	9/15/81	Added work done on GM 134831	
157	10/15/81	Added work done on GM 134831	
158	11/15/81	Added work done on GM 134831	
159	12/15/81	Added work done on GM 134831	
160	1/15/82	Added work done on GM 134831	
161	2/15/82	Added work done on GM 134831	
162	3/15/82	Added work done on GM 134831	
163	4/15/82	Added work done on GM 134831	
164	5/15/82	Added work done on GM 134831	
165	6/15/82	Added work done on GM 134831	
166	7/15/82	Added work done on GM 134831	
167	8/15/82	Added work done on GM 134831	
168	9/15/82	Added work done on GM 134831	
169	10/15/82	Added work done on GM 134831	
170	11/15/82	Added work done on GM 134831	
171	12/15/82	Added work done on GM 134831	
172	1/15/83	Added work done on GM 134831	
173	2/15/83	Added work done on GM 134831	
174	3/15/83	Added work done on GM 134831	
175	4/15/83	Added work done on GM 134831	
176	5/15/83	Added work done on GM 134831	
177	6/15/83	Added work done on GM 134831	
178	7/15/83	Added work done on GM 134831	
179	8/15/83	Added work done on GM 134831	
180	9/15/83	Added work done on GM 134831	
181	10/15/83	Added work done on GM 134831	
182	11/15/83	Added work done on GM 134831	
183	12/15/83	Added work done on GM 134831	
184	1/15/84	Added work done on GM 134831	
185	2/15/84	Added work done on GM 134831	
186	3/15/84	Added work done on GM 134831	
187	4/15/84	Added work done on GM 134831	
188	5/15/84	Added work done on GM 134831	
189	6/15/84	Added work done on GM 134831	
190	7/15/84	Added work done on GM 134831	
191	8/15/84	Added work done on GM 134831	
192	9/15/84	Added work done on GM 134831	
193	10/15/84	Added work done on GM 134831	
194	11/15/84	Added work done on GM 134831	
195	12/15/84	Added work done on GM 134831	
196	1/15/85	Added work done on GM 134831	
197	2/15/85	Added work done on GM 134831	
198	3/15/85	Added work done on GM 134831	
199	4/15/85	Added work done on GM 134831	
200	5/15/85	Added work done on GM 134831	
201	6/15/85	Added work done on GM 134831	
202	7/15/85	Added work done on GM 134831	
203	8/15/85	Added work done on GM 134831	
204	9/15/85	Added work done on GM 134831	
205	10/15/85	Added work done on GM 134831	
206	11/15/85	Added work done on GM 134831	
207	12/15/85	Added work done on GM 134831	
208	1/15/86	Added work done on GM 134831	

NOTE: FIELD SURVEY MADE BY
SAN FRANCISCO DIVISION ENGINEERS.



PROPOSED
GLENVIEW DRIVE



LEGEND

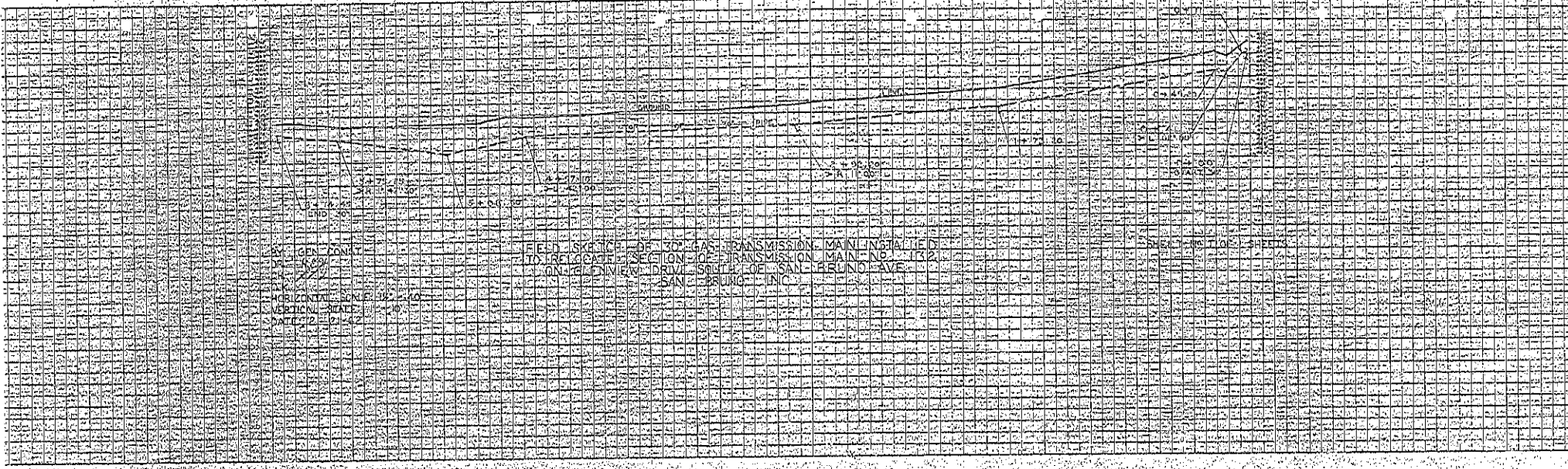
- MAIN INST'D
- - - - EXIST'G MAIN
- SLEEVE INST'D

*Contract signed
by A. Henderson 4/1/61*

SUMMARY

- 615' - 30" TP GAS TRANSMISSION MAIN INST'D
 - 455' - 30" TP " " SALV'D
 - 58' - 30" TP " " ABAN'D
- DATE COMP: 7-31-61

GEN FOREMAN: R. L. JEFFERIES
JOB FOREMAN: R. R. GLENN
G1151181



FIELD SKETCH OF 30" GAS TRANSMISSION MAIN INSTALLED
TO RELOCATE SECTION OF TRANSMISSION MAIN IN
SECTION OF GLENVIEW DRIVE SOUTH OF SAN PABLO AVE
SAN FRANCISCO, CALIF.

PACIFIC GAS AND ELECTRIC COMPANY
ESTIMATE FOR APPROPRIATION
WORK ORDER

DATE 6/20/61 GAS DEPARTMENT DIVISION San Francisco
 NAMES OF APPLICANTS Consolidated Lands Inc., P.G. & E. LOCAL EST. NO. C-12784

	SCHED.	LIGHT'G. (CSTHRAS.)	REFRIGS.	RANGES		W. HTR. 30 GAL.	HEAT'G. KW - MBTU	DOM. WTR. SYSTEMS	STER'LRS. DRIERS	AGR. HYD. KW	POWER LOAD (HP)		EAR	LINE EXTENSION DATA						
				5KW & OVER							FIRST 5	OVER 5		TOT. LYH. EXT. FT.	CO. ALLOW. FT.	EXCESS LINE FT.	ADVANCE REQD. \$	AT \$ PER FT.	EST. 1 YR. REV. \$	
DOM.																				
OTHER SERVICES		(KW)																		

TITLE AND LOCATION Relocate Section of Gas Transmission Main #122 Gas Transmission R/W East of Skyline Blvd. South of San Bruno Ave.
 NECESSITY FOR PROPOSED WORK AND DESCRIPTION THEREOF:

PLEASE SEE ATTACHED SHEET.

RECOMMENDATION	ACCOUNT NUMBER	ESTIMATE OF COST—ITEMS (FOR INVOLVED ESTIMATES GIVE SUMMARY HERE—DETAIL ON EXTRA SHEETS)	UNIT COST	AMOUNT (DOLLARS ONLY)	TOTAL (DOLLARS ONLY)
<u>See attached.</u>		<u>Consolidated Lands to pay</u>			
1121		Secure new Right of Way			400.
1124		Install 670' = 30" Transmission Main	28.50		19000.
1124-R		Remove from capital 600' = 30" Trans. Main			1750.

D. & C. NOS.
 AUTHORIZED
 JUL 26 1961
 Vice Pres. & Gen'l. Mgr.

BUDGET ITEM NO. 1-65

PLANT TO BE REMOVED OR ABANDONED.
 Remove 450' of 30" Trans. Main
 (CA 98015 - 1949)
 450' Salvage Value \$4704.
 30" Junk Value 30.

Abandon in place 120' = 30" Trans. Main
 (CA 136471 - 1957)

CHECK LIST	REQ'D.	SEC'D.	TOTAL (EXCL. MAINT. AND OPER.)	\$
J. P. INTENTION			OVERHEAD CONSTRUCTION COSTS	6% \$ 1269.
CITY OR CO. PERMIT	X		APPROPRIATION (EXCL. MAINT. & OPER.)	\$ 22419.
TREE TRIMMING			MAINTENANCE AND OPERATION	\$ 0.
HIWAY PERMIT			AMOUNT AUTHORIZED	\$ 22419.
RIGHT OF WAY	X		REVOLVING STOCK EQUIPMENT (NET) AND SERVICES INSTALLED	\$ 0.
TEL. PAR'L. PERMIT			DEDUCT SALVAGE AND/OR OTHER CREDITS	\$ 18757.
R. R. X-ING PERMIT			NET AMOUNT	\$ 3662.
OTHER PERMITS			TOWN OR TERRITORY AND COUNTY	
MACHINE TRENCH—FT.	670		San Bruno	P - 2J
PAVEMENT—SQ. FT.	300			

GENERAL OFFICE	DIVISION OR ORIGINATING OFFICE	W. O. NO.
	L. W. BRILLHART	
RECOMMENDED	RECOMMENDED E. E. STRAND	AUTHORIZED S. L. SIBLEY
APPROVED	APPROVED	GENERAL MANAGER 151181

In accordance with the terms stated herein

INTERLINES MOTOR EXPRESS

DUP. INVOICE SHOW THIS
NUMBER ON YOUR REMITTANCE

DOOR TO DOOR
UNLESS OTHERWISE
SPECIFIED

OAKLAND 20, CALIF.
1239 5TH STREET

2320 SECOND STREET
SACRAMENTO 18, CALIF.

REDDING, CALIF.
P. O. BOX 616

B 691948

SHIPPER ADDRESS SHIPPER'S NO.

BAY CITIES EQUIPMENT OAKLAND

NOTED
AUG 31 1961
J. A. Marino

CONSIGNEE ADDRESS DATE BILLED

P. G. E. 3100 GENEVA AVE. S. F.

8 24 61 ZY

38897

INTERCHANGE POINT ROUTING C.C. REF.

PIECES	ARTICLES & MARKS	WEIGHT	RATE	FREIGHT	ADVANCES	PREPAID	COLLECT
1 1 2	CTN CUTTING EDGE TTL	109 110	M SC	295 58			353
BILL P. G. E. EMERYVILLE <i>1913</i> <i>GM 151181-1132/1124</i> <i>PD99126</i>				TRANSPORT CLEARINGS PLEASE MAIL CHECK TO P.O. BOX 3609 RINCON ANNEX SAN FRANCISCO 19, CALIFORNIA INTERLINES MOTOR EXPRESS 1-11			

THE ACCEPTANCE OF THIS SHIPMENT CONSTITUTES AN OBLIGATION TO PAY COLLECT CHARGES IF BILLED.	I.M.E. DRIVER NAME DATE	REC'D IN GOOD ORDER SIGNED NAME DATE COMPANY
---	--------------------------------	---

2

PACIFIC GAS AND ELECTRIC COMPANY

GENERAL CONSTRUCTION DEPARTMENT MATERIAL PROCUREMENT ORDER

No. 70290

INDICATE ON EACH PURCHASE ORDER

PREFIX _____

GENERAL CONSTRUCTION DEPARTMENT

DATE 7-28-61

195

ORDER NUMBER

SKYLINE BLVD

STREET

C. O. FOREMAN OR SUBSTORE

STORES

GENERAL

CONSTRUCTION

DEPARTMENT

QTY	QTY WANTED	ARTICLES DESCRIBE ARTICLE PLAINLY AND FULLY, GIVE CATALOG AND PAGE NUMBER OR DRAWING NUMBER WHEN NECESSARY	UNIT	MATERIAL NUMBER	QUANTITY SHIPPED	FOR PURCHASING AND ACCOUNTING USE ONLY		PLANT LOCATION OR ITEM NO.	ACCOUNT NUMBER	PURCHASED OR BACK ORDERED ON ORDER NO.
						PRICE	AMOUNT			
		STEEL STRAP, GALVANIZED, 30MIL, 3/4" WIDE, 6" LONG	7"	02-1632	678			132	1124	
<p><i>678</i></p> <p><i>@ 11.75</i></p> <p><i>7966.75</i></p> <p><i>OF ACP</i></p> <p><i>637.32</i></p>										

MATERIAL CHARGED TO HOLDING & M.

3-67689

J. V. No. *137046*

NOTE: WHEN ORDER MATERIAL IS TO BE USED

JOB ORDER		
PREFIX	NUMBER	SURVIA
<i>74</i>	<i>151281</i>	<i>17</i>

TOTAL

DIVISION 71

DATE SHIPPED

8-1-61

195

SHIPPING CLERK

W. N.

PLACED ON SUBSTORE NUMBER

1

No. 70290

BUYER'S CHECKER'S SIGNATURE

HEAD OFFICE APPROVAL

INSTALLATION PERIOD PREFIX AND RETIREMENT CODE COLUMNS ARE FOR UNIT COST ACCOUNT SALVAGE ONLY. CIRCULAR LETTERS 838 AND 839 INCLUDED IN AUDITING DEPARTMENT INSTRUCTIONS FOR THEIR USE ARE

61-0050-10M-DKS-6-50

PACIFIC GAS AND ELECTRIC COMPANY
CREDIT REQUISITION

PLANT ACCOUNTING DEPT.

DATE 9-26-61

THE ARTICLES LISTED BELOW HAVE BEEN RETURNED TO THE WAREHOUSE OR ABANDONED IN PLACE AND REPRESENT ONE OF THE FOLLOWING AS INDICATED:

2 SALVAGED 3 MISCELLANEOUS OVERDRAWN 5 DIVISION JOB NOS. 6 GM'S FOREMAN Jeffrey Yesofa CREDIT CHECK NO.

CHK.	MATERIAL NUMBER	ARTICLES	UNIT	QUANTITY	PRICE	AMOUNT	PLANT LOCATION OR ITEM NO.	ACCOUNT NUMBER	UNIT COST PER	ACC'T INSTALLATION PERIOD	RET. CODE
		47" 20" STEEL DW IN SCRAP SECTION UNDER 2' SCRAP OR DAMAGED BEAT	B. 5610				9229124			1957	
		ORIGINAL IDENTITY OF ITEMS RETURNED TO WAREHOUSE IN FORM DIFFERENT FROM ORIGINAL CHARGE AND COMPOSITE UNITS.				TOTAL					
		Ref DR 21-8655299				X					
						X					
						X					

DESCRIBE JOB FROM WHICH MATERIAL WAS RETURNED

REFERENCE 7M-135471 ET. Dryum David & San Diego Ave

JOB ORDER Relocate Trans Line San Diego

PREFIX 7M NUMBER 151181 SUFFIX 1

7-73 DIVISION NUMBER

SUBSTANTIAL NUMBER 62

No. 4189944

SIGNATURE _____ DESCRIBE FULLY JOB FROM WHICH MATERIAL WAS RETURNED