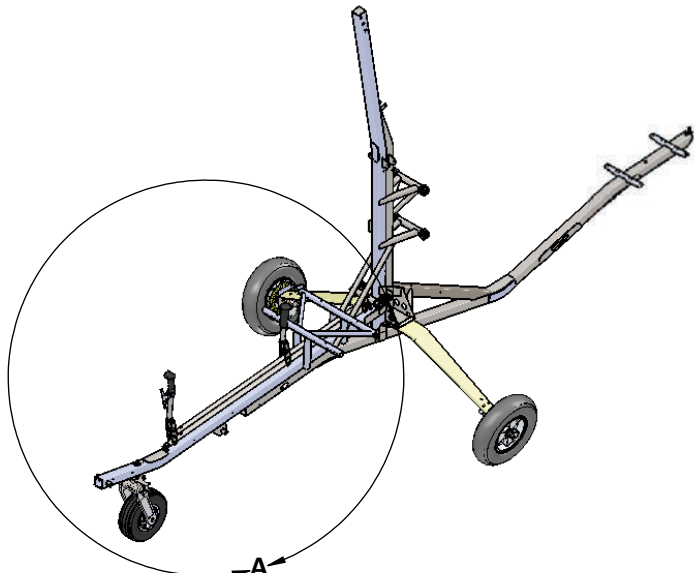


REV.	DESCRIPTION	BY	DATE	APPROVED
A	INITIAL RELEASE		2/14/18	

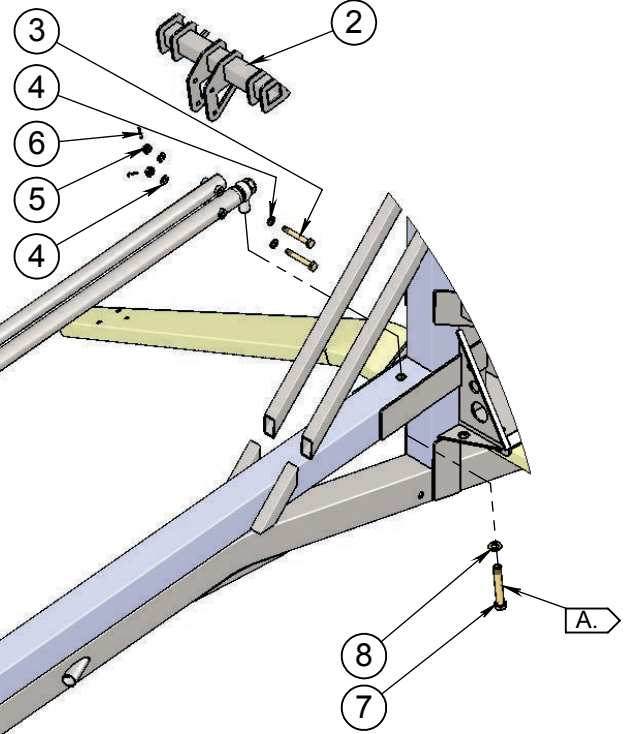


AREA SHOWN IN DETAIL VIEW

SCISSOR TUBE ASSEMBLY

ADJUST NUMBER OF WASHERS TO GET BEST FIT.

ROD END MUST **NOT** SIT ON GUSSET



SCISSOR TUBE ASSEMBLY & BELLCRANK INSTALL

NOTES:

- A. CLEAN THREADS AND APPLY THREADLOCK.
- B. SOME COMPONENTS NOT SHOWN FOR CLARITY.

ITEM	PART NUMBER	PART NAME	QTY
1	645578	SCISSOR TUBE ASSEMBLY	1
2	812198	MAIN BELLCRANK	1
3	771417	AN4-17 BOLT	2
4	775417	AN960-416L FLAT WASHER	4
5	911004	AN310-4 CASTLE NUT	2
6	912102	AN380-2-2 COTTER PIN	2
7	771624	AN6-24A BOLT	2
8	775616	AN960-616 FLAT WASHER	2

DIMENSIONS IN INCHES	
THIRD ANGLE PROJECTION	
THIS DOCUMENT CONTAINS PROPRIETARY INFORMATION AND IS FURNISHED IN CONFIDENCE UNDER THE EXPRESS UNDERSTANDING THAT NEITHER IT NOR ANY REPRODUCTION MAY BE USED FOR ANY PURPOSE WITHOUT PER [REDACTED] ROM	

TOLERANCE UNLESS NOTED DIFFERENTLY		
INCH	.XXX .XX .X	+/- 0.003 +/- 0.01 +/- 0.1
MM	(.XXX) (.XX) (.X)	(+/- 0.10) (+/- 0.20) (+/- 1.0)
ANGLES	+/- 0.5°	

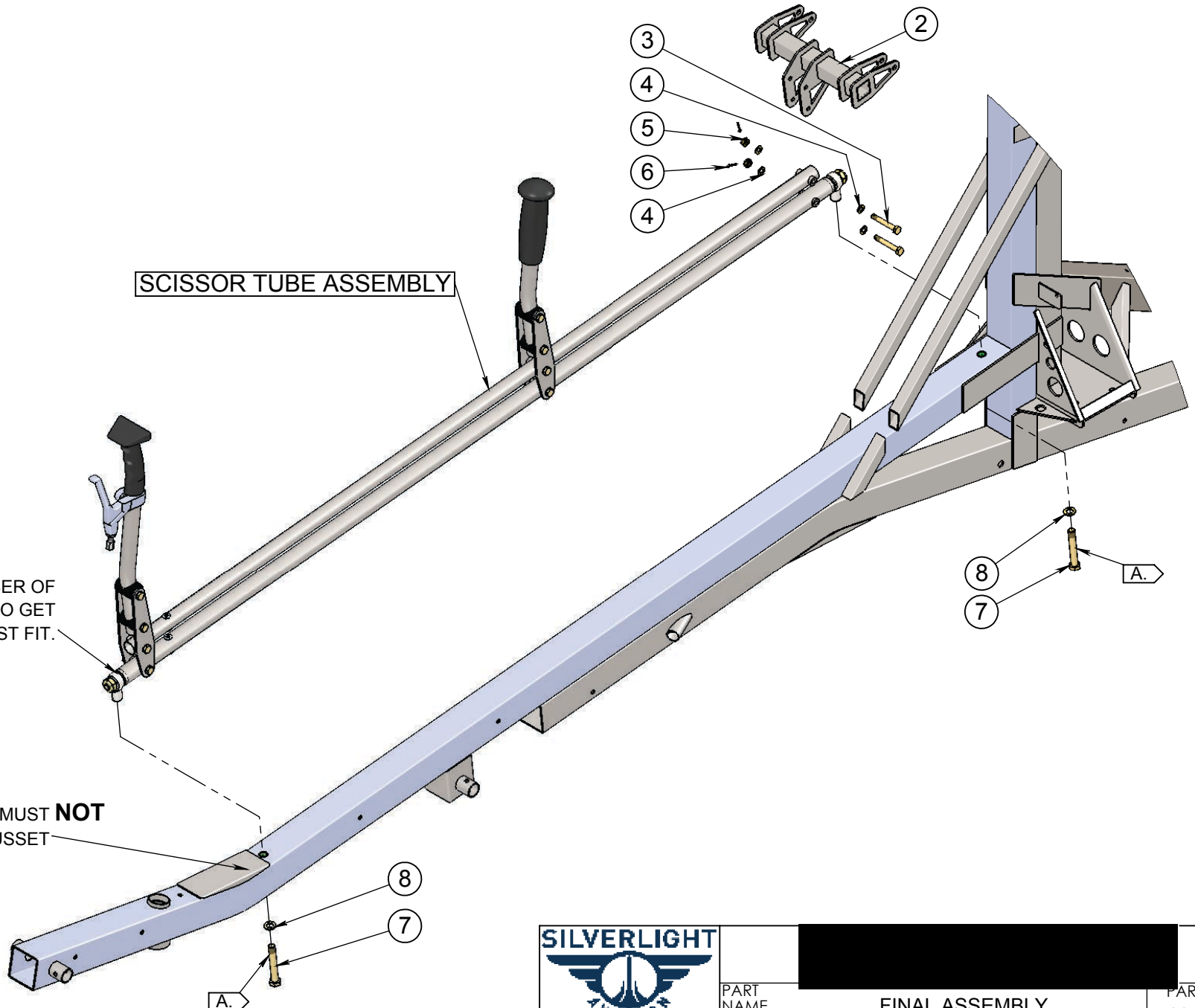
APPROVALS		
NAME	DATE	
DRAWN EP	2/14/2018	
PROD. KM	2/14/2018	
ENGINEER AF	2/14/2018	



PART NO. 681511	PART NAME FINAL ASSEMBLY
PROJECT NAME AR-1	CAD FILE 681511 FINAL ASSEMBLY
NUMBER 1	MATERIAL
REQ'D 1	FINISH
CAD MODEL BY [REDACTED]	NEXT ASM. NAME

NEXT ASM. NUMBER		681511-305
SIZE A	SCALE 1:10	SHEET 1 of 3

REV A
681511-305
SIZE A
SCALE 1:10
SHEET 1 of 3



SCISSOR TUBE ASSEMBLY

ADJUST NUMBER OF WASHERS TO GET BEST FIT.

ROD END MUST **NOT** SIT ON GUSSET

NOTE:
SOME COMPONENTS NOT SHOWN FOR CLARITY.



PART NAME		[REDACTED]			PART NO.	
		FINAL ASSEMBLY			681511	
PROJECT NAME	SCALE	SHEET	SIZE	CAD FILE	DRW NO.	REV
AR-1	1:8	2 OF 3	A	681511 Final Assembly	681511-305	A

ITEM	PART NUMBER	PART NAME	QTY
1	645578	SCISSOR TUBE ASSEMBLY	1
2	812198	MAIN BELLCRANK	1
3	771417	AN4-17 BOLT	2
4	775417	AN960-416L FLAT WASHER	4
5	911004	AN310-4 CASTLE NUT	2
6	912102	AN380-2-2 COTTER PIN	2
7	771624	AN6-24A BOLT	2
8	775616	AN960-616 FLAT WASHER	2

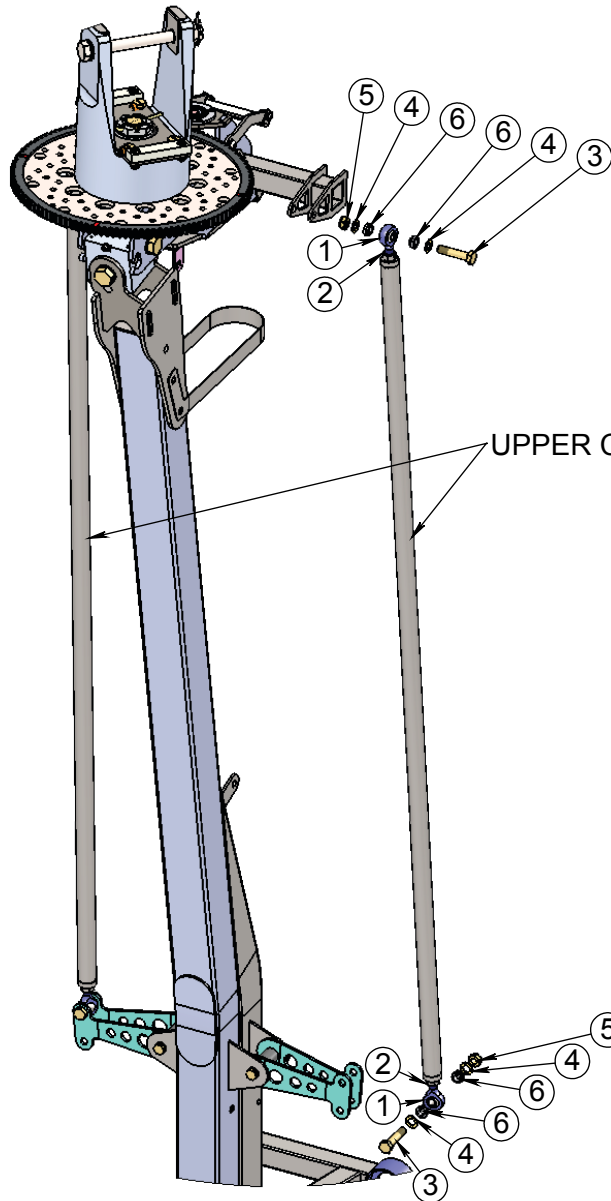
NOTES:

- A. > CLEAN THREADS AND APPLY THREADLOCK.
- B. SOME COMPONENTS NOT SHOWN FOR CLARITY.



PROJECT NAME		SCALE	SHEET	SIZE	CAD FILE	DRW NO.	REV
AR-1		1:6	3 OF 3	A	681511 Final Assembly	681511-305	A
PART NAME						PART NO.	
FINAL ASSEMBLY						681511	

REV.	DESCRIPTION	BY	DATE	APPROVED
A	INITIAL RELEASE		9/10/2018	



NOTES:

- A. SOME COMPONENTS NOT SHOWN FOR CLARITY.
- B. ONLY ONE CONTROL ROD IS SHOWN EXPLODED, THE OTHER ROD IS INSTALLED THE SAME.
- C. ROD MOUNTING HARDWARE IS INCLUDED AS PART OF CONTROL ROD ASSEMBLY.

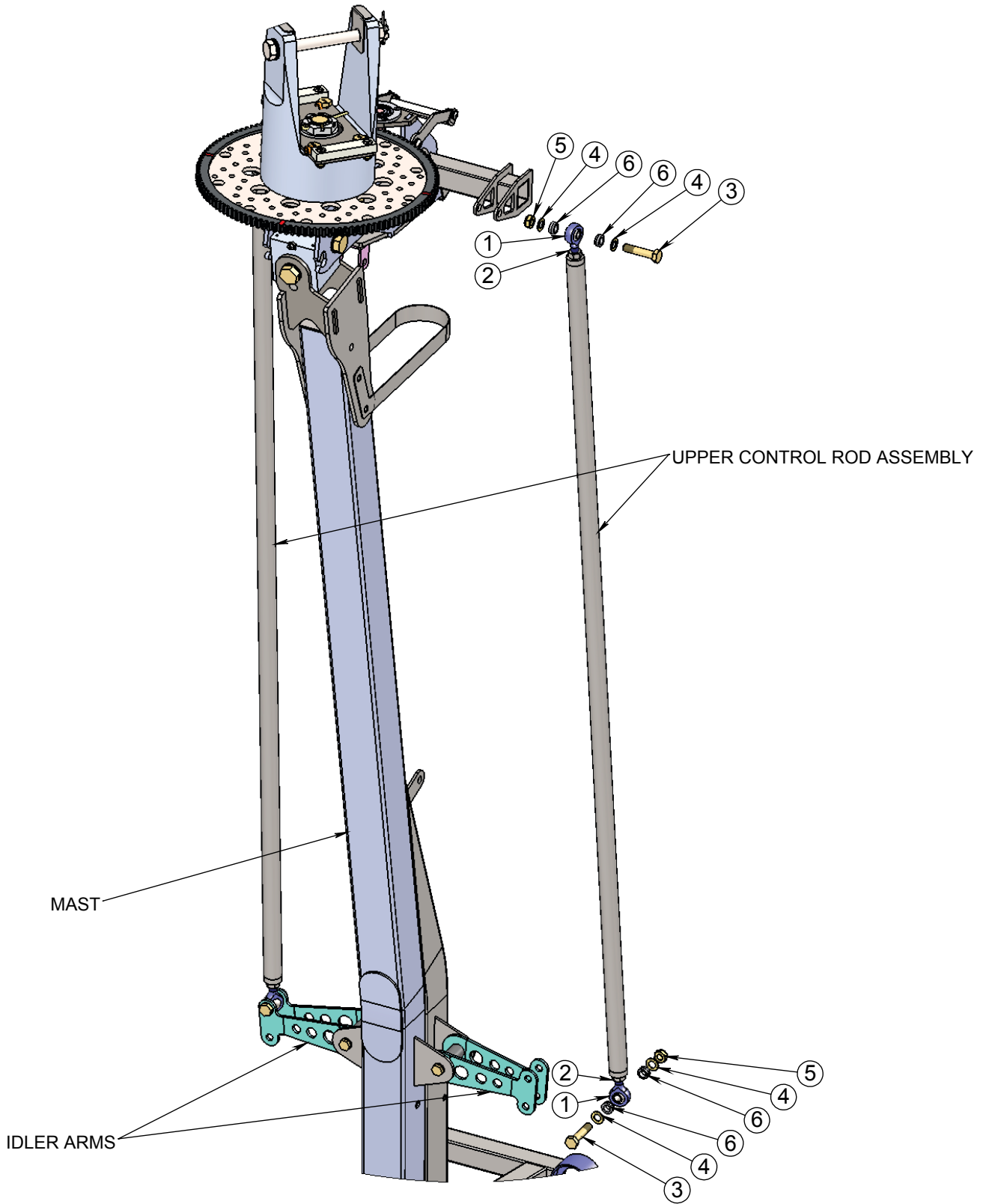
ITEM	P/N	PART NAME	VENDOR P/N	QTY
1	9948754	5/16 X 5/16-24 ROD END BEARING RIGHT HAND MALE		2
2	918524	5/16-24 HEX NUT (SS)	91845A115	4
3	771513	AN5-13A BOLT		4
4	775517	AN960-516L FLAT WASHER		8
5	910524	AN364-524A NYLOC LOCKNUT		4
6	751533	CONTROL ROD SPACER		8
7	994875	5/16 X 5/16-24 ROD END BEARING LEFT HAND MALE		2

UPPER CONTROL ROD INSTALLATION

DIMENSIONS IN INCHES		TOLERANCE UNLESS NOTED DIFFERENTLY		APPROVALS	
THIRD ANGLE PROJECTION					
<p>THIS DOCUMENT CONTAINS PROPRIETARY INFORMATION AND IS FURNISHED IN CONFIDENCE UNDER THE EXPRESS UNDERSTANDING THAT NEITHER IT NOR ANY REPRODUCTION MAY BE USED, FOR ANY PURPOSE WITHOUT PERMISSION IN WRITING FROM [REDACTED]</p>					
INCH	.XXX .XX .X	+/- 0.003 +/- 0.01 +/- 0.1	DRAWN	EP	9/10/2018
MM	(.XXX) (.XX) (.X)	(+/- 0.10) (+/- 0.20) (+/- 1.0)	CHKD	AF	9/10/2018
ANGLES		+/- 0.5°	ENG	AF	9/10/2018
			PROD	LN	9/10/2018



PART NO. 681511	PART NAME FINAL ASEMBLY		[REDACTED]	
PROJECT NAME AR-1	CAD FILE 681511 FINAL ASSEMBLY		[REDACTED]	
NUMBER REQ'D 1	MATERIAL	FINISH	NEXT ASM. NUMBER	DWG NO. 681511-309
CAD MODEL BY [REDACTED]	NEXT ASM. NAME		REV. A	SHEET 1 of 3
			SIZE A	SCALE 1:8



PART NAME

FINAL ASEMBLY


PART NO.
681511

PROJECT NAME	SCALE	SHEET	SIZE	CAD FILE	DRW NO.	REV
AR-1	1:6	2 OF 3	A	681511 Final Assembly	681511-309	A

ITEM	P/N	PART NAME	VENDOR P/N	QTY
1	9948754	5/16 X 5/16-24 ROD END BEARING RIGHT HAND MALE		2
2	918524	5/16-24 HEX NUT (SS)	91845A115	4
3	751533	CONTROL ROD SPACER		8
4	994875	5/16 X 5/16-24 ROD END BEARING LEFT HAND MALE		2
5	771513	AN5-13A BOLT		4
6	775517	AN960-516L FLAT WASHER		8
7	910524	AN364-524A NYLOC LOCKNUT		4

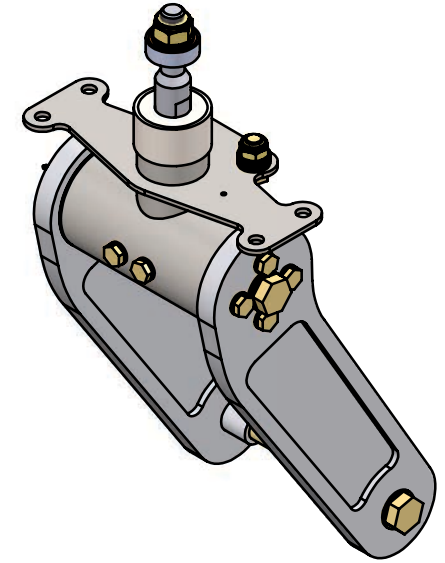
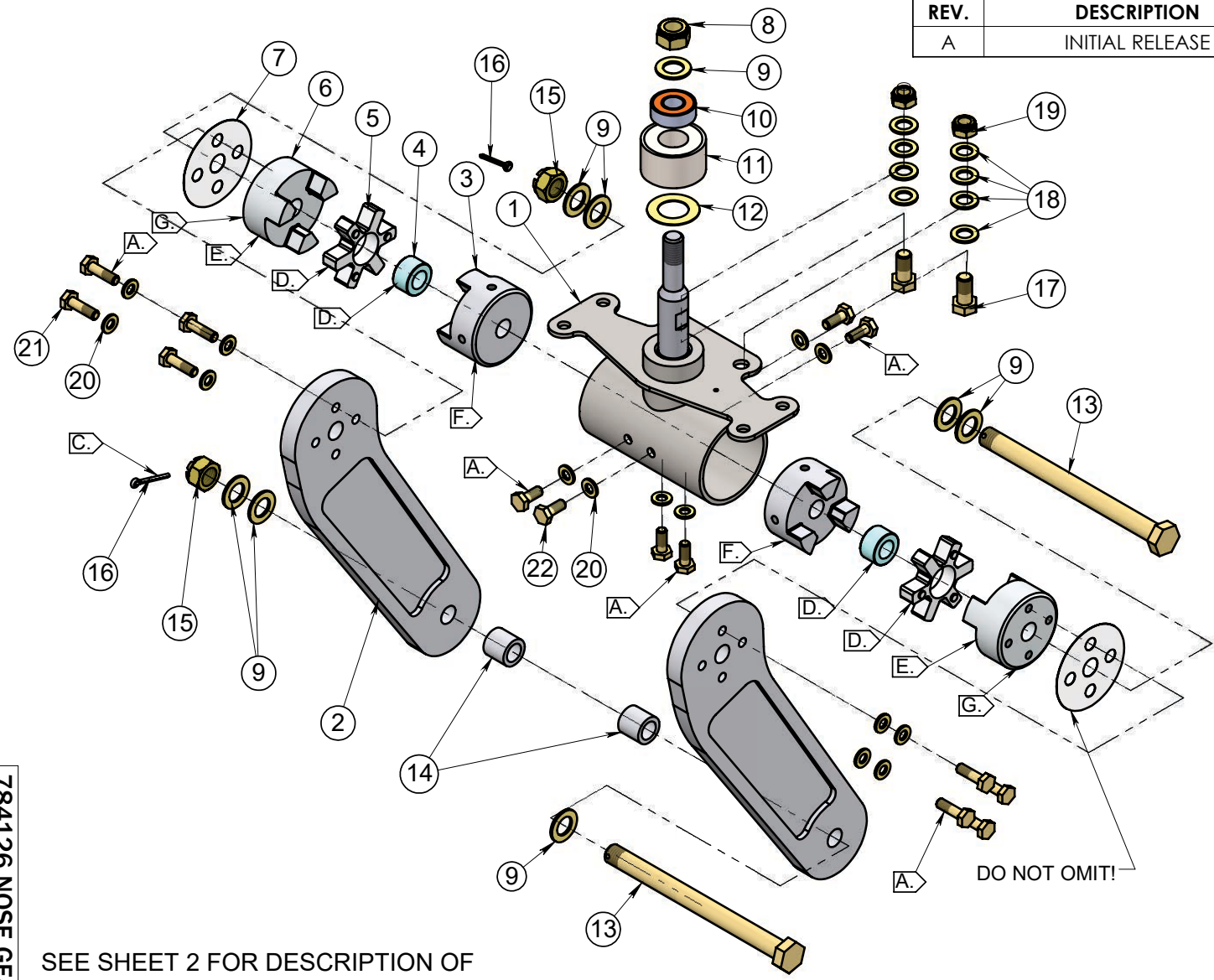
NOTES:

- A. SOME COMPONENTS NOT SHOWN FOR CLARITY.
- B. ONLY ONE CONTROL ROD IS SHOWN EXPLODED, THE OTHER ROD IS INSTALLED THE SAME.
- C. ROD MOUNTING HARDWARE IS INCLUDED AS PART OF CONTROL ROD ASSEMBLY.

						
PART NAME		FINAL ASEMBLY			PART NO. 681511	
PROJECT NAME	SCALE	SHEET	SIZE	CAD FILE	DRW NO.	REV
AR-1	1:4	3 OF 3	A	681511 Final Assembly	681511-309	A

784126 NOSE GEAR FORK ASSEMBLY

REV.	DESCRIPTION	BY	DATE	APPROVED
A	INITIAL RELEASE			



- NOTES:**
- A. CLEAN AND APPLY THREADLOCK.
 - B. INSTALL NUT HAND TIGHT ONLY.
 - C. BEND COTTER PIN ONLY ENOUGH TO HOLD IN PLACE.
 - D. APPLY WHITE LITHIUM GREASE TO ALL PART FACES BEFORE ASSEMBLY.
 - E. APPLY WHITE LITHIUM GREASE TO OUTER FACE ONLY.
 - F. INSTALL ITEM #3 ,FIXED COG, WITH STANDOFF AT 12 O'CLOCK POSITION.
 - G. INSTALL ITEM #6, FLOATING COG, WITH INDEX STANDOFF AT 6 O'CLOCK POSITION

SEE SHEET 2 FOR DESCRIPTION OF DAMPER COGS.

DIMENSIONS IN INCHES THIRD ANGLE PROJECTION	TOLERANCE UNLESS NOTED DIFFERENTLY INCH .XXX .XX .X MM (.XXX) (.XX) (.X) ANGLES +/- 0.5°	APPROVALS				PART NO. 784126	PART NAME NOSE GEAR FORK ASSEMBLY				
		NAME	DATE			PROJECT NAME AR-1	CAD FILE 784126 NOSE GEAR FORK ASSEM				
		DRAWN EP	2/8/2018			NUMBER REQ'D 1	MATERIAL	FINISH	NEXT ASM. NUMBER	DWG NO 784126-21	REV A
		CHKD A.F.	7/31/2017			CAD MODEL BY	NEXT ASM. NAME	FINAL ASSEMBLY	SIZE A	SCALE 1:4	SHEET 1 of 4

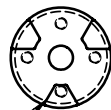
784126 NOSE GEAR FORK ASSEMBLY

ITEM	PART NUMBER	PART NAME	QTY
1	693498	CROSS TUBE WELDMENT	1
2	792222	NOSE GEAR SIDEPLATE	2
3	133517	FIXED DAMPER COG	2
4	434422	NOSE GEAR SPIDER INSERT	2
5	624214	NOSE GEAR DAMPER SPIDER	2
6	623314	NOSE GEAR FLOATING COG	2
7	050378	NOSE GEAR INSULATOR	2
8	908820	AN365-820A NYLOC LOCKNUT	1
9	775816	AN960-816 FLAT WASHER	8
10	561296	1 1/8 X 1/2 X 3/8 BEARING	1
11	695434	1 5/8 X 3/4 X 7/16 BEARING	1
12	775217	AN960-1216L FLAT WASHER	1
13	771847	AN8-60 BOLT	2
14	693692	NOSE WHEEL SPACER	2
15	911008	AN310-8 CASTLE NUT	2
16	912304	AN380-3-4 COTTER PIN	2
17	771606	AN6-06A BOLT	2
18	775616	AN960-616 FLAT WASHER	8
19	908624	AN365-624A NYLOC LOCKNUT	2
20	775416	AN960-416 FLAT WASHER	14
21	771407	AN4-07A BOLT	8
22	771405	AN4-05A BOLT	6

623314 NOSE GEAR FLOATING COG



STANDOFFS



INDEX STANDOFF LOCATED AT SAME LOCATION AS HOLE ON OPPOSITE FACE



PART NAME



NOSE GEAR FORK ASSEMBLY

PART NO.
784126

PROJECT NAME

AR-1

SCALE

1:4

SHEET

2 OF 4

SIZE

A

CAD FILE

784126 Nose Gear fork
assem

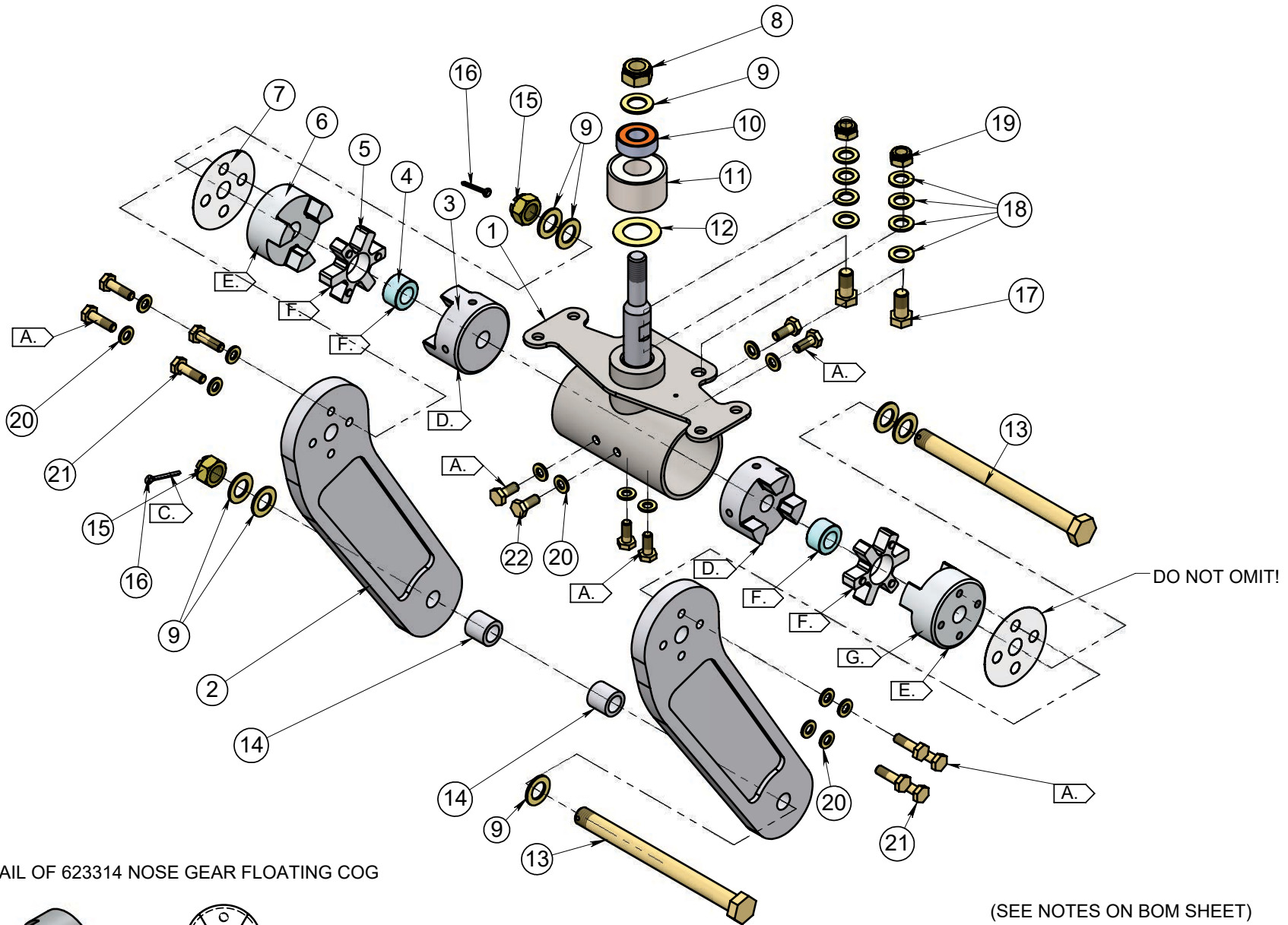
DRW NO.

784126-21

REV

A

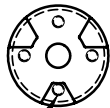
784126 NOSE GEAR FORK ASSEMBLY



DETAIL OF 623314 NOSE GEAR FLOATING COG



STANDOFFS



INDEX STANDOFF LOCATED AT SAME LOCATION AS HOLE ON OPPOSITE FACE

(SEE NOTES ON BOM SHEET)



PART NAME		NOSE GEAR FORK ASSEMBLY		PART NO.		784126	
PROJECT NAME	AR-1	SCALE	1:4	SHEET	3 OF 4	SIZE	A
CAD FILE	784126 Nose Gear fork assem	DRW NO.	784126-21	REV	A		

ITEM NO.	PART NUMBER	PART NAME	QTY
1	693498	CROSS TUBE WELDMENT	1
2	792222	NOSE GEAR SIDEPLATE	2
3	133517	FIXED DAMPER COG	2
4	434422	NOSE GEAR SPIDER INSERT	2
5	624214	NOSE GEAR DAMPER SPIDER	2
6	623314	NOSE GEAR FLOATING COG	2
7	050378	NOSE GEAR INSULATOR	2
8	908820	AN365-820A NYLOC LOCKNUT	1
9	775816	AN960-816 FLAT WASHER	8
10	561296	1 1/8 X 1/2 X 3/8 BEARING	1
11	695434	1 5/8 X 3/4 X 7/16 BEARING	1
12	775217	AN960-1216L FLAT WASHER	1
13	771847	AN8-60 BOLT	2
14	693692	NOSE WHEEL SPACER	2
15	911008	AN310-8 CASTLE NUT	2
16	912304	AN380-3-4 COTTER PIN	2
17	771606	AN6-06A BOLT	2
18	775616	AN960-616 FLAT WASHER	8
19	908624	AN365-624A NYLOC LOCKNUT	2
20	775416	AN960-416 FLAT WASHER	14
21	771407	AN4-07A BOLT	8
22	771405	AN4-05A BOLT	6

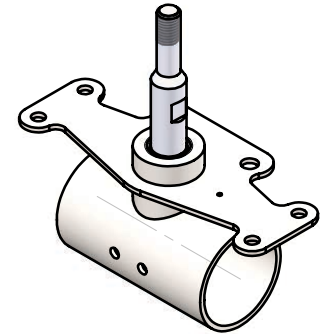
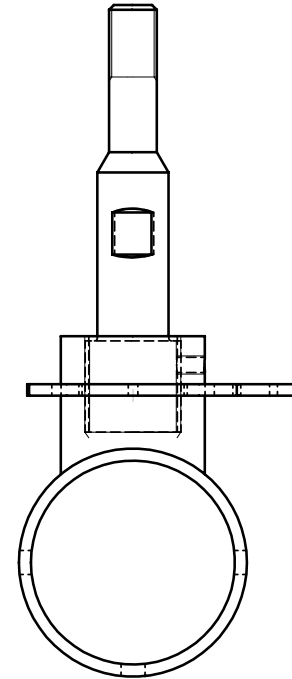
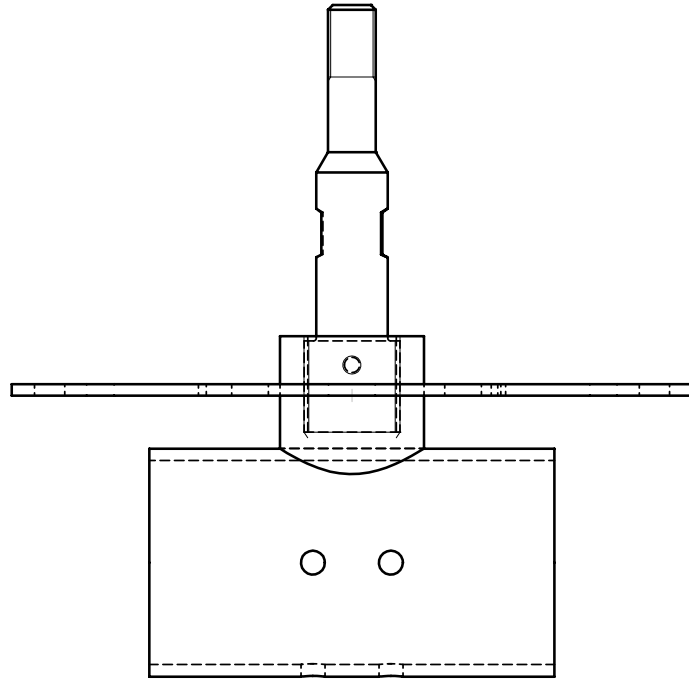
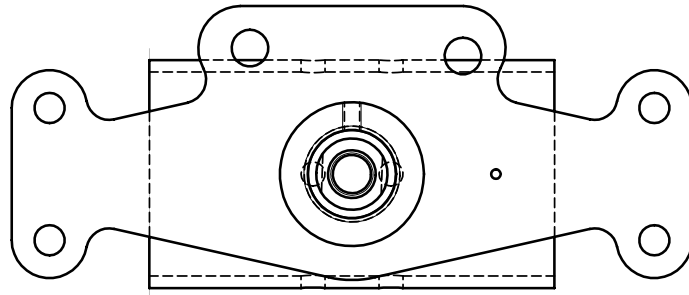
NOTES:

- A. > CLEAN AND APPLY THREADLOCK.
- B. > INSTALL NUT HAND TIGHT ONLY.
- C. > BEND COTTER PIN ONLY ENOUGH TO HOLD IN PLACE.
- D. > INSTALL ITEM #3, FIXED COG, WITH STANDOFF AT 12 O'CLOCK POSITION.
- E. > INSTALL ITEM #6, FLOATING COG, WITH INDEX STANDOFF AT 6 O'CLOCK POSITION
- F. > APPLY WHITE LITHIUM GREASE TO ALL PART FACES BEFORE ASSEMBLY.
- G. > APPLY WHITE LITHIUM GREASE TO OUTER FACE ONLY.



PART NAME		NOSE GEAR FORK ASSEMBLY		PART NO.		784126	
PROJECT NAME	AR-1	SCALE	2:1	SHEET	4 OF 4	SIZE	A
CAD FILE		784126 Nose Gear fork assem		DRW NO.	784126-21	REV	A

REV.	DESCRIPTION	BY	DATE	APPROVED
A	INITIAL RELEASE			



693498 CROSS TUBE WELDMENT

DIMENSIONS IN INCHES		TOLERANCE UNLESS NOTED DIFFERENTLY		APPROVALS			PART NO. 693498	PART NAME CROSS TUBE WELDMENT					
THIRD ANGLE PROJECTION 		INCH .XXX .XX .X	+/- 0.003 +/- 0.01 +/- 0.1	DRAWN	NAME		DATE	PROJECT NAME AR-1	CAD FILE 693498 NOSE GEAR CROSS TUBE WLDMT				
THIS DOCUMENT CONTAINS PROPRIETARY INFORMATION AND IS FURNISHED IN CONFIDENCE UNDER THE EXPRESS UNDERSTANDING THAT NEITHER IT NOR ANY REPRODUCTION MAY BE USED, FOR ANY PURPOSE WITHOUT PERMISSION IN WRITING FROM [REDACTED]		MM (.XXX) (.XX) (.X)	(+/- 0.10) (+/- 0.20) (+/- 1.0)	CHKD				NUMBER REQ'D 1	MATERIAL	FINISH 32 Ra	NEXT ASM. NUMBER 74126	DWG NO	REV
		ANGLES +/- 0.5°		ENG				CAD MODEL BY [REDACTED]	NEXT ASM. NAME NOSEGEAR FORK ASSEMBLY			SIZE A	SCALE 1:2

693498		CROSS TUBE WELDMENT	
MATERIAL	FINISH	REV	PROJECT
	32 Ra		AR-1
NEXT ASSEM NO.	NEXT ASSEM NAME	NO. REQ'D	
74126	NOSEGEAR FORK ASSEMBLY	1	
VENDOR		VENDOR P/N	