

MAIN GEAR STRUT INSTALLATION - FIGURE 03

| ITEM | PART NUMBER | NOMENCLATURE 1 2 3 4 5 6 7 | EFFECTIVITY | | UNITS PER ASSY |
|-------|--------------|--|-------------|------|----------------|
| | | | FROM | TO | |
| | | MAIN GEAR STRUT INSTALLATION REFER TO NOTE 3 | 0001 | 0377 | |
| - 1 | 5094102-7 | · STRUT ASSY MAIN LANDING GEAR LH | | | 1 |
| - 1A | 5094102-8 | · STRUT ASSY MAIN LANDING GEAR RH | | | 1 |
| - 1B | 5041000-209 | ·· CYLINDER AND TRUNNION ASSY LH | | | 1 |
| - 1C | 5041000-210 | ·· CYLINDER AND TRUNNION ASSY RH | | | 1 |
| | 1D | ··· STRUT ASSY UPR LH FSO5041000-205 | | | 1 |
| - 1E | 5041000-205 | ··· STRUT ASSY UPR LH | | | 1 |
| - 1F | 5041000-202 | ··· STRUT ASSY UPR RH FSO5041000-206 | | | 1 |
| - 1G | 5041000-206 | ··· STRUT ASSY UPR RH | | | 1 |
| | 2 | ··· BOLT FSO NAS464P6LA53 | 0001 | 0161 | 1 |
| - 2A | NAS464P6LA53 | ··· BOLT REFER TO NOTE 3 | 0162 | 0377 | 1 |
| | 3 | ··· WASHER FSOAN960PD616L | 0001 | 0161 | 2 |
| - 3A | AN960PD616L | ··· WASHER REFER TO NOTE 3 | 0162 | 0377 | 2 |
| | 4 | ··· NUT FSO MS21042-6 | 0001 | 0161 | 1 |
| - 4A | MS21042-6 | ··· NUT REFER TO NOTE 3 | 0162 | 0377 | 1 |
| | 5 | ··· ORFICE & TUBE ASSY UPR STRUT | | | 1 |
| | 6 | ···· ORIFICE | | | 1 |
| | 7 | ··· O-RING REFER TO NOTE 2 | | | 1 |
| | 8 | ·· VALVE ASSY FSO MS28889-2 | | | 1 |
| - 8A | MS28889-2 | ·· VALVE ASSY | | | 1 |
| - 8B | MS28775-015 | ··· O-RING | | | 1 |
| - 8C | MS20813-1 | ··· CAP | | | 1 |
| | 9 | ·· O-RING USED WITH 0543036-1 | | | 1 |
| | 10 | ·· PISTON AND AXLE ASSY LH | | | 1 |
| - 10A | 5041000-76 | ·· PISTON AND AXLE ASSY RH | | | 1 |
| | 11 | ··· BOLT | | | 1 |
| - 11A | AN960-416L | ··· WASHER | | | 1 |
| - 11B | MS21042L4 | ··· NUT | | | 1 |
| | 12 | ·· RING EXTERNAL LOCK | | | 1 |
| | 13 | ·· BEARING INNER WEU 5041108-2 | | | 1 |
| - 13A | 5041108-2 | ·· BEARING INNER | | | 1 |
| | 14 | ·· SPACER EXTEND STOP | | | 1 |



- item not illustrated

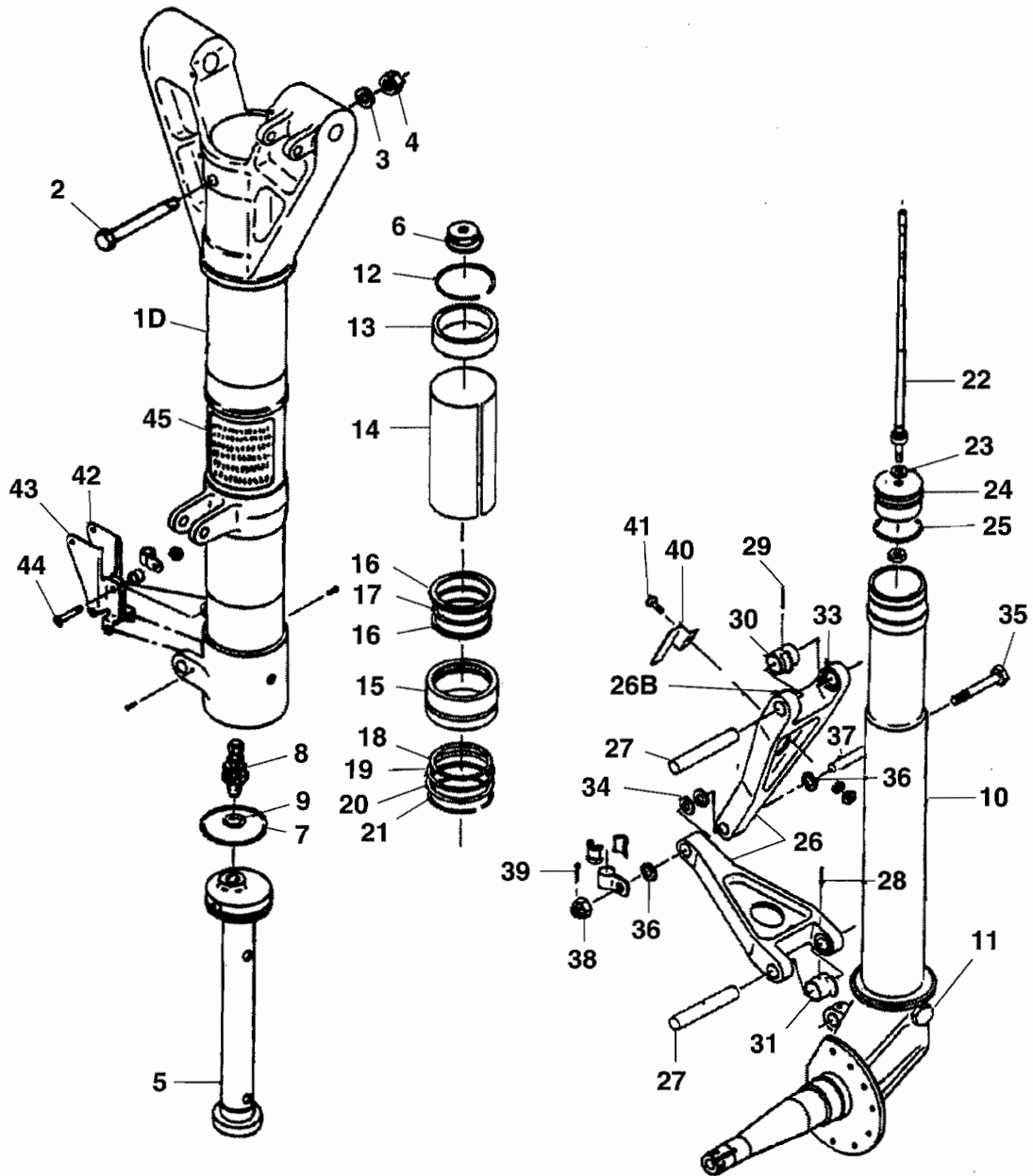
| ITEM | PART NUMBER | NOMENCLATURE 1 2 3 4 5 6 7 | EFFECTIVITY | | UNITS PER ASSY |
|-------|-------------|---|-------------|-----------|----------------|
| | | | FROM | TO | |
| 15 | 5041106-2 | · · RING PACK SUPPORT FSO 0841212-1 | | | 1 |
| - 15A | 5041106-3 | · · RING PACK SUPPORT FSO 0841212-1 | | | 1 |
| - 15B | 0841212-1 | · · RING PACK SUPPORT | | | 1 |
| 16 | MS28774-330 | · · RING BACK UP FSO A1261TYPE B | 0001 | 0092 | 2 |
| 17 | MS28775-330 | · · O-RING FSO A1261TYPE B | 0001 | 0092 | 1 |
| - 17A | A1261TYPE B | · · POLY PACKSEAL TYPE B WEU A2749TYPE B, REFER TO NOTE 3 | V83259 | 0092 0377 | 1 |
| - 17B | A2749TYPE B | · · POLY PACKSEAL TYPE B, REFER TO NOTE 3 | V83259 | 0092 0377 | 1 |
| 18 | MS28775-229 | · · O-RING REFER TO NOTE 2 | | | 1 |
| 19 | MS28775-22 | · · SCRAPER REFER TO NOTE 2 | | | 1 |
| 20 | 5041111-1 | · · RING LOCK | | | 1 |
| 21 | CM2690-14 | · · RING INTERNAL LOCK | | | 1 |
| - 21A | 5241001-1 | · · PIN ASSY METERING | | | 1 |
| 22 | 5241001-2 | · · SHANK ASSY METERING PIN | | | 1 |
| 23 | MS28775-010 | · · · O-RING | | | 1 |
| - 23A | AN960-416L | · · · WASHER | | | 1 |
| - 23B | MS2044N4 | · · · NUT | | | 1 |
| 24 | 5041015-1 | · · · SUPPORT SEAL | | | 1 |
| 25 | MS28775-222 | · · O-RING REFER TO NOTE 2 | | | 1 |
| - 25A | 5241001-1 | · · PIN ASSY METERING PIN | | | 1 |
| 26 | 5041114-7 | · · LINK ASSY LH TORQUE | | | 2 |
| - 26A | 5041114-8 | · · LINK ASSY RH TORQUE | | | 2 |
| 26B | MS15002-1 | · · · FITTING LUBE | | | 3 |
| 27 | 5041120-1 | · · SHAFT | | | 2 |
| 28 | NAS561P5-10 | · · PIN SLOTTED SPRING | | | 2 |
| - 29 | | · · DELETED-NOT USED | | | R |
| 30 | 5041121-1 | · · SPACER ASSY | | | 1 |
| 31 | 5041121-2 | · · SPACER ASSY | | | 1 |
| - 31A | 5041025-1 | · · SHIM | | | AR |
| - 32 | | · · DELETED-NOT USED | | | R |
| - 33 | | · · DELETED-NOT USED | | | R |
| 34 | AN960-716L | · · WASHER | | | AR |
| - 34A | AN960-716 | · · WASHER | | | AR |
| 35 | AN175-20 | · · BOLT | | | 1 |
| 36 | 5045018-2 | · · WASHER | | | 2 |
| 37 | 5041013-3 | · · BUSHING | | | 1 |
| 38 | AN310-5 | · · NUT | | | 1 |
| - 38A | MS24665-153 | · · PIN COTTER | | | 1 |

- item not illustrated

| ITEM | PART NUMBER | NOMENCLATURE 1 2 3 4 5 6 7 | EFFECTIVITY | | UNITS PER ASSY |
|--|--------------|--|-------------|------|----------------|
| | | | FROM | TO | |
| 40 | 5041007-1 | · · STRIKER PLATE SWITCH LH ONLY | | | 1 |
| 41 | MS27039-1-08 | · · SCREW | | | 1 |
| - 41A | AN960-10L | · · WASHER | | | 1 |
| - 41B | MS21044N3 | · · NUT | | | 1 |
| 42 | 5041006-2 | · · BRACKET HALF SWITCHFSO 5114425-2 | 0001 | 0096 | 1 |
| - 42A | 5114425-2 | · · BRACKET HALF SWITCH, REFER TO NOTE 3 | 0097 | 0377 | 1 |
| 43 | 5041006-1 | · · BRACKET HALF SWITCH FSO 5114425-3 | 0001 | 0096 | 1 |
| - 43A | 5114425-3 | · · BRACKET HALF SWITCH, REFER TO NOTE 3 | 0097 | 0377 | 1 |
| 44 | AN515-8R18 | · · SCREW | | | 2 |
| - 44A | MS21044N08 | · · NUT | | | 2 |
| 45 | 5243000-1 | · · PLACARD LH GEAR FILLING FSO 5243000-6 | 0001 | 0092 | 1 |
| - 45A | 5243000-4 | · · PLACARD RH GEAR FILLING FSO 5243000-6 | 0001 | 0092 | 1 |
| - 45B | 5243000-6 | · · PLACARD LH & RH GEAR FILLING, REFER TO NOTE 1 AND NOTE 3 | 0093 | 0377 | 2 |
| - 45C | 5243000-213 | · SEAL KIT OVERHAUL MAIN GEAR | | | 1 |
| NOTE 1: DENOTES PLACARDS FURNISHED IN 5090350-3 EXTERIOR PLACARDS KIT | | | | | |
| NOTE 2: PARTS INCLUDED IN 5041000-213 MAIN GEAR OVERHAUL SEAL KIT | | | | | |
| NOTE 3: AND ALSO USABLE ON CODE 0393 THRU 0398 | | | | | |

- item not illustrated

A56705

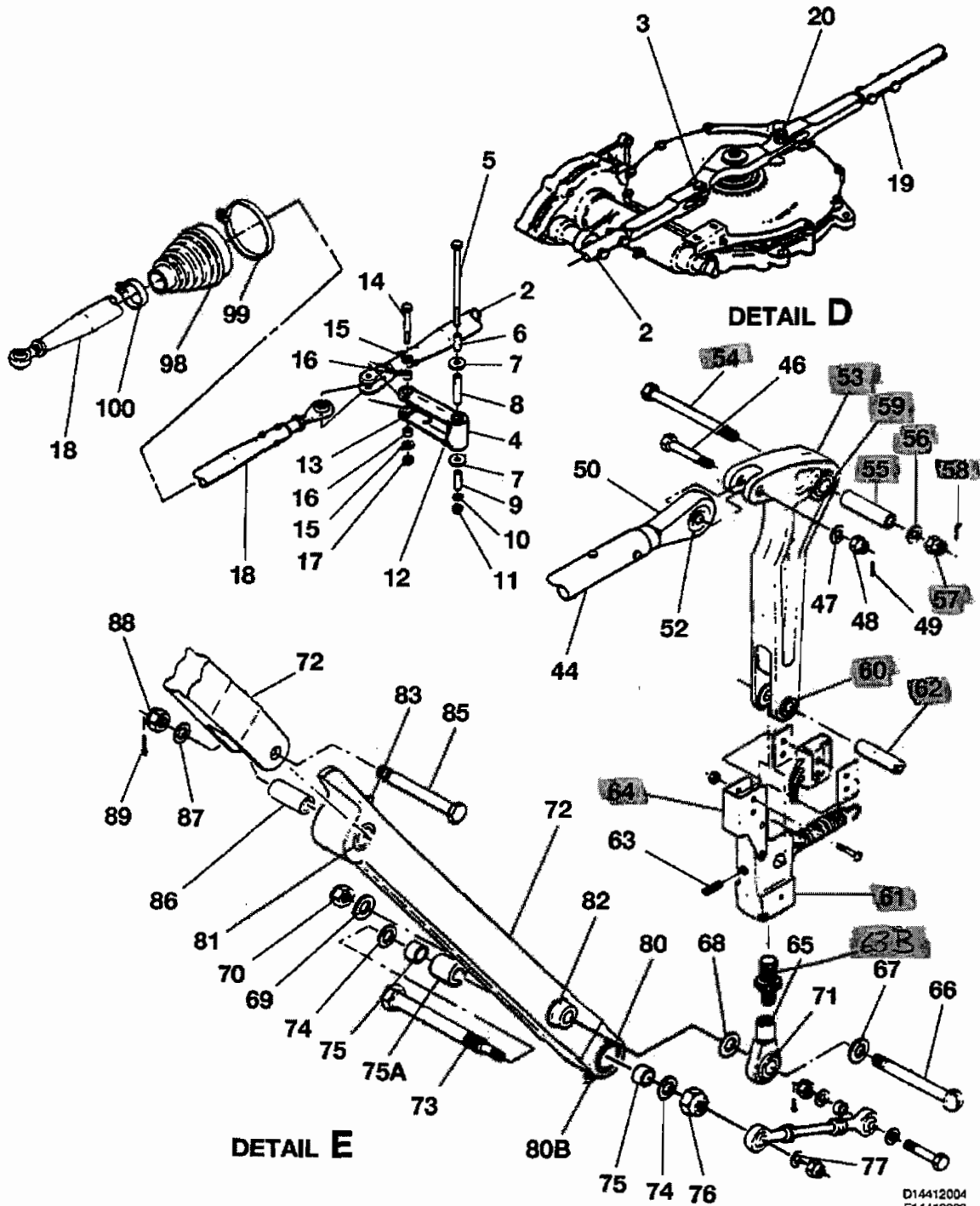


Sheet 1 of 1

14412003
10413008

CESSNA AIRCRAFT COMPANY
MODEL 414
 ILLUSTRATED PARTS CATALOG

AS6714



D14412004
 E14413003

MAIN GEAR RETRACTION LINKAGE INSTALLATION
 FIGURE 01 (SHEET 2)

CESSNA AIRCRAFT COMPANY
MODEL 414
ILLUSTRATED PARTS CATALOG

| FIG ITEM | PART NUMBER | NOMENCLATURE | EFFECT | | UNITS |
|-------------|--------------|--|--------|-------|-------------|
| | | | FROM | TO | PER ASSY |
| 01 | | MAIN GEAR RETRACTION LINKAGE INSTALLATION | 0001 | A0001 | RF |
| 1 | | DOOR RETRACTION LINKAGE INSTL REFER TO 32-30-00 FIGURE 04 | | | RF |
| 2 | 5045009-10 | TUBE ASSY RH INBD | | | 1 |
| | | ATTACHING PARTS | | | |
| 3 | NAS464P5A11 | BOLT | | | 1 |
| - 3A | AN960-516L | WASHER | | | 1 |
| - 3B | MS21042L5 | NUT | | | 1 |
| 4 | 5045003-4 | BELLCRANK ASSY IDLER | | | 1 |
| | | ATTACHING PARTS | | | |
| 5 | NAS1304-68 | BOLT | | | 1 |
| 6 | NAS43DD4-57 | SPACER | | | 1 |
| 7 | AN970-4 | WASHER | | | 2 |
| 8 | 0843400-129 | SPACER | | | 1 |
| 9 | NAS43DD4-73 | SPACER | | | 1 |
| 10 | AN960-416L | WASHER | | | 1 |
| 11 | MS21042L4 | NUT | | | 1 |
| 12 | S1004-14A | BEARING | | | 2 |
| 13 | S1004-51A | BEARING | | | 2 |
| 14 | NAS464P5A28 | BOLT | | | 1 |
| 15 | 5045018-2 | WASHER | | | 2 |
| 16 | NAS72-S-005 | SPACER | | | 2 |
| 17 | MS21042L5 | NUT | | | 1 |
| 18 | 5045009-16 | TUBE ASSY RH INTERMEDIATE | | | 1 |
| 19 | 5045009-15 | TUBE ASSY LH INBOARD | | | 1 |
| | | ATTACHING PARTS | | | |
| 20 | NAS464P5A11 | BOLT LH TUBE | | | 1 |
| - 20A | AN960-516L | WASHER LH TUBE | | | 1 |
| - 20B | MS21042L5 | NUT LH TUBE | | | 1 |
| 21 | NAS464P5A15 | BOLT | | | 1 |
| 22 | AN960-516L | WASHER | | | 1 |
| 23 | MS21044N5 | NUT | | | 1 |
| 24 | MR5 | BEARING ROD END LH TUBE | V77896 | | 1 |
| - 24A | MR5 | BEARING ROD END RH TUBE | V77896 | | 2 |
| 25 | AN316-8R | NUT CHECK LH TUBE | | | 1 |
| - 25A | AN316-8R | NUT CHECK RH TUBE | | | 1 |
| 26 | 5045213-3 | TUBE ASSY OUTBOARD | | | 2 |
| | | ATTACHING PARTS | | | |
| 27 | NAS464P5A15 | BOLT | | | 1 |
| 28 | AN960-516L | WASHER | | | 1 |
| 29 | MS21044N5 | NUT | | | 1 |
| 30 | NAS464P5A14 | BOLT | | | 1 |
| 31 | AN960-516 | WASHER | | | 1 |
| 32 | MS21042L5 | NUT | | | 1 |
| 33 | ST5A | ROD END | V77896 | | 2 |
| 34 | AN316-7R | NUT CHECK | | | 2 |
| 35 | 5045010-13 | TORQUE TUBE ASSY LH FSO 5045010-25 | 0001 | 0098 | 1 |
| - 35A | 5045010-19 | TORQUE TUBE ASSY LH FSO 5045010-25 | 0099 | A0001 | 1 |
| - 35B | 5045010-24 | TORQUE TUBE ASSY RH FSO 5045010-32 | A0001 | & ON | NP R |
| - 35C | 5045010-32 | TORQUE TUBE ASSY RH RH | A0001 | & ON | 1 R |
| - 35D | 5045010-14 | TORQUE TUBE ASSY RH FSO 5045010-24 | 0001 | 0098 | 1 R |
| - 35E | 5045010-18 | TORQUE TUBE ASSY RH FSO 5045010-24 | 0099 | A0001 | 1 R |
| - 35F | 5045010-25 | TORQUE TUBE ASSY LH FSO 5045010-33 | A0001 | & ON | NP R |
| - 35G | 5045010-33 | TORQUE TUBE ASSY LH LH | A0001 | & ON | 1 R |
| | | ATTACHING PARTS | | | |
| 36 | NAS146-40 | BOLT | | | 1 |
| 37 | MS20002-6C | WASHER | | | 1 |
| - 37A | AN960-616 | WASHER | | | 1 |
| 38 | AN960-516L | WASHER | | | 1 |
| 39 | MS20365-624C | NUT | | | 1 |
| 40 | NAS464P5LA10 | BOLT | | | 1 |
| - 40A | AN960-516 | WASHER | | | 2 |
| - 40B | MS20365-624C | NUT | | | 1 |
| 41 | NAS77A5-7 | BUSHING | | | 2 |
| 42 | 5243518-3 | BOLT FORK, REFER TO NOTE 1 | 0001 | 0098 | 1 |
| - 42A | 5141052-1 | BOLT FORK USED WITH 5045010-18 & 5045010-19, REFER TO NOTE 1 | 0099 | A0001 | 1 |
| 43 | AN316-8R | NUT CHECK | 0001 | 0098 | 1 |
| - 43A | AN316-10R | NUT CHECK USED WITH 5141052-1 | 0099 | A0001 | 1 |

- ITEM NOT ILLUSTRATED

© Cessna Aircraft Company

Figure 01

Page 3

32-30-00

May 1/2008

CESSNA AIRCRAFT COMPANY
MODEL 414
ILLUSTRATED PARTS CATALOG

| FIG ITEM | PART NUMBER | NOMENCLATURE | EFFECT | | UNITS PER ASSY |
|-------------|--------------|---|--------|-------|----------------------|
| | | | FROM | TO | |
| 01 | | | | | |
| 44 | 0840125-15 | TUBE ASSY AFT | | | 2 |
| | | ATTACHING PARTS | | | |
| 45 | AN25-16 | BOLT CLEVIS | 0001 | 0098 | 1 |
| - 45A | AN25-18 | BOLT CLEVIS | 0099 | A0001 | 1 |
| 46 | NAS464P5-14 | BOLT | | | 1 |
| 47 | AN960-516 | WASHER | | | 2 |
| 48 | AN320-5 | NUT | | | 2 |
| 49 | MS24665-134 | PIN COTTER | | | 2 |
| | | --- | | | |
| 50 | REM5S2 | ROD END INSD | V99528 | | 1 |
| 51 | AN316-7R | NUT CHECK INBD | | | 1 |
| 52 | LHCA5 | BEARING OUTBD | | | 1 |
| 53 | 5041001-1 | BELLCRANK ASSY LH | 0001 | 0450 | 1 |
| - 53A | 5041001-5 | BELLCRANK ASSY LH | 0451 | A0001 | 1 |
| - 53B | 5041001-2 | BELLCRANK ASSY RH | 0001 | 0450 | 1 |
| - 53C | 5041001-6 | BELLCRANK ASSY RH | 0451 | A0001 | 1 |
| | | ATTACHING PARTS | | | |
| 54 | NAS464P4-26 | BOLT | | | 1 |
| 55 | S433-4P32 | SPACER | | | 1 |
| 56 | AN960-416 | WASHER | | | 1 |
| 57 | AN320-4 | NUT | | | 1 |
| 58 | MS24665-132 | PIN COTTER | | | 1 |
| | | --- | | | |
| 59 | NAS77-6-401 | BUSHING | | | 2 |
| 60 | S1004-318 | BUSHING | | | 2 |
| 61 | 0841110-1 | LINK ASSY SIDE BRACE LOCK FSO 0841110-2 | 0001 | 0092 | 2 |
| - 61A | 0841110-2 | LINK ASSY SIDE BRACE LOCK WEU 0841110-3 | 0093 | 0904 | 2 |
| - 61B | 0841110-3 | LINK ASSY SIDE BRACE LOCK | 0905 | A0001 | 2 |
| | | ATTACHING PARTS | | | |
| 62 | 5041018-1 | PIN DOWN LOCK | | | 1 |
| 63 | MS35265-46 | SET SCREW | | | 1 |
| | | --- | | | |
| - 63A | 0841113-1 | SCREW ADJUSTING FSO 0841113-2 | 0001 | 0092 | 1 |
| - 63B | 0841113-2 | SCREW ADJUSTING | 0093 | A0001 | 1 |
| - 63C | 0841112-1 | LINK FSO 0841112-2 | 0001 | 0904 | 1 |
| - 63D | 0841112-2 | LINK | 0905 | A0001 | 1 |
| 64 | 0841235-3 | BRACKET SWITCH | | | 1 |
| 65 | 0841111-1 | END FITTING ASSY FSO 0841111-3 | 0001 | 0602 | 2 |
| - 65A | 0841111-3 | END FITTING ASSY | 0603 | A0001 | 2 |
| | | ATTACHING PARTS | | | |
| 66 | AN25-38A | BOLT | | | 1 |
| 67 | 0841004-5 | WASHER | | | 1 |
| 68 | AN960PDS16L | WASHER | | | 1 |
| 69 | AN960-516L | WASHER | | | 1 |
| 70 | MS21042L5 | NUT | | | 1 |
| | | --- | | | |
| 71 | KWB5G | BEARING | | | 1 |
| 72 | 5041000-47 | BRACE ASSY LH SIDE, REFER TO NOTE 2 AND NOTE 3 | 0001 | 0377 | 1 |
| - 72A | 5141001-9 | BRACE ASSY LH SIDE, REFER TO NOTE 2 AND NOTE 4 | 0378 | 0392 | 1 |
| - 72B | 5141001-33 | BRACE ASSY LH SIDE, REFER TO NOTE 2 | 0451 | A0001 | 1 |
| - 72C | 5041000-46 | BRACE ASSY RH SIDE WEU 5141001-10, REFER TO NOTE 2 AND NOTE 3 | 0001 | 0377 | 1 |
| - 72D | 5141001-10 | BRACE ASSY RH SIDE, REFER TO NOTE 2 AND NOTE 4 | 0378 | 0392 | 1 |
| - 72E | 5141001-34 | BRACE ASSY RH SIDE, REFER TO NOTE 2 | 0451 | A0001 | 1 |
| | | ATTACHING PARTS | | | |
| 73 | 5041011-1 | BOLT | | | 1 |
| 74 | AN960-716L | WASHER | | | 2 |
| 75 | 5041004-1 | SPACER UPLOCK | | | 2 |
| 75A | 5041003-2 | SPACER | | | 1 |
| 76 | MS20365-720C | NUT | | | 1 |
| 77 | AN960-10L | WASHER | | | AR |
| - 78 | | DELETED-NOT USED | | | R |
| 79 | NAS464P7-29 | BOLT | 0251 | A0001 | 1 |
| - 79A | NAS464P7-26 | BOLT | 0001 | 0250 | 1 |
| - 79B | 0841202-1 | SPACER | | | 1 |
| - 79C | AN960-1016 | WASHER | | | AR |
| - 79D | AN960-1016L | WASHER | | | AR |
| - 79E | AN960-716L | WASHER | | | 1 |
| - 79F | AN320-7 | NUT | | | 1 |
| - 79G | MS24665-285 | PIN COTTER | | | 1 |
| | | --- | | | |

- ITEM NOT ILLUSTRATED

© Cessna Aircraft Company

Figure 01
Page 4
May 1/2008

32-30-00