

Beechcraft

BONANZA

ILLUSTRATED PARTS CATALOG

33 }
A33 } (CD-1 THRU CD-387)

B33 (CD-388 THRU CD-813)

C33 (CD-814 THRU CD-1118)

E33 (CD-1119 THRU CD-1234)

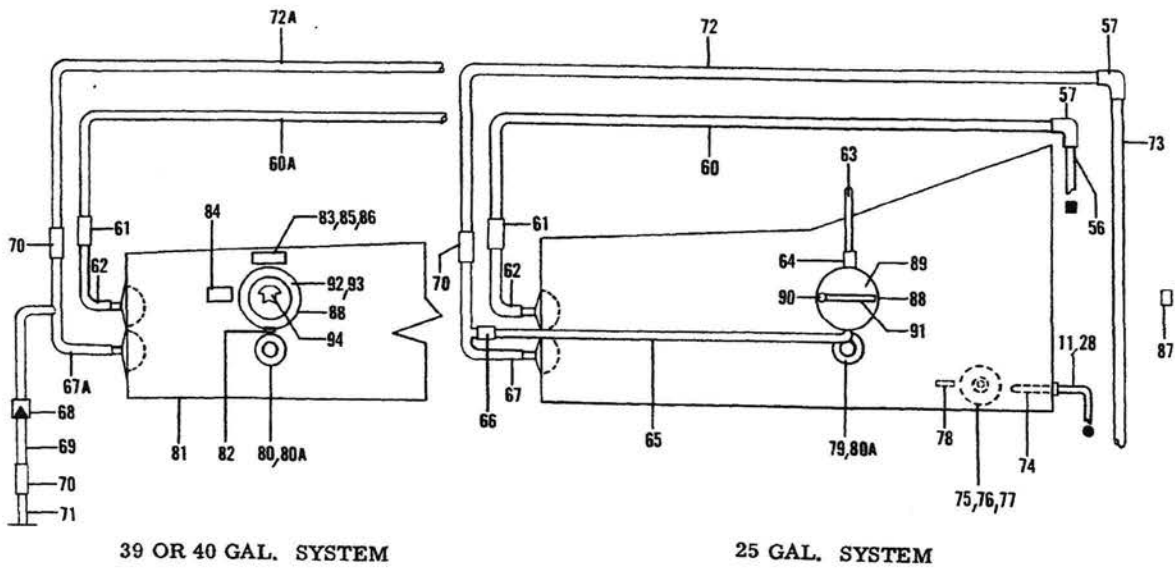
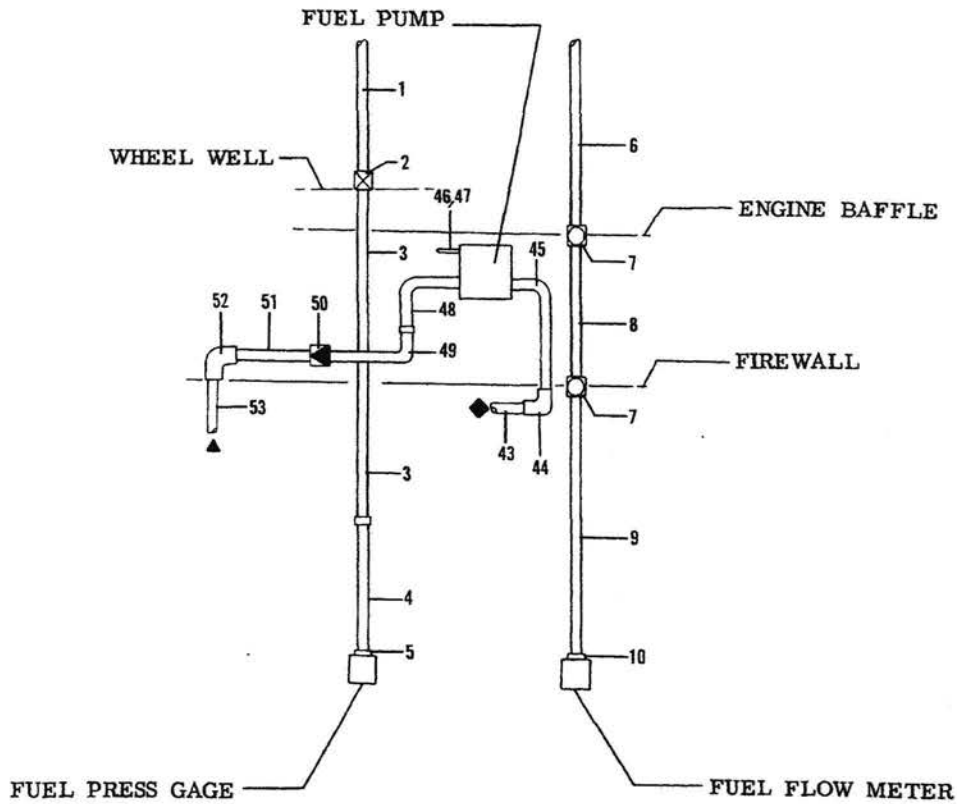
C33A (CE-1 THRU CE-179)

E33A (CE-180 THRU CE-289)

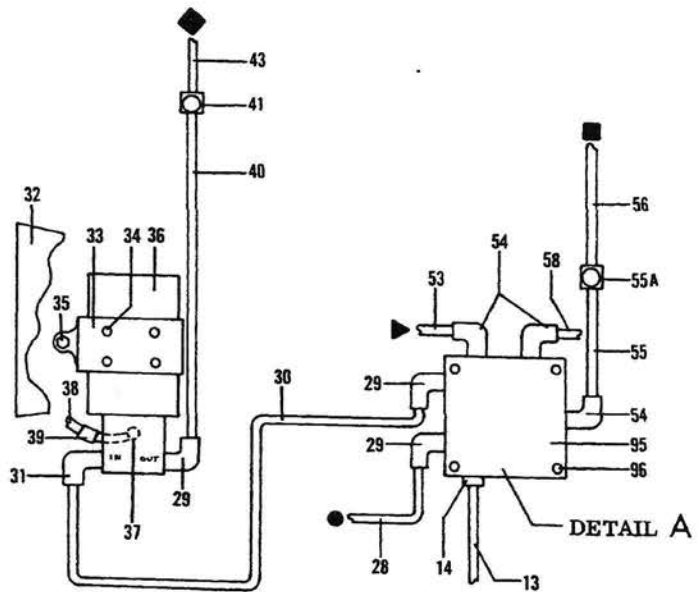
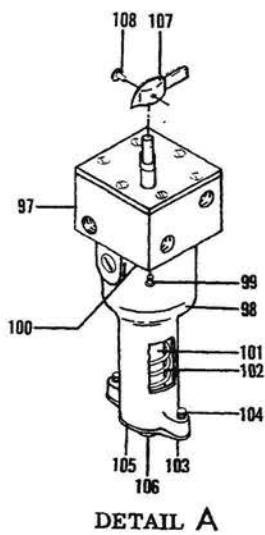
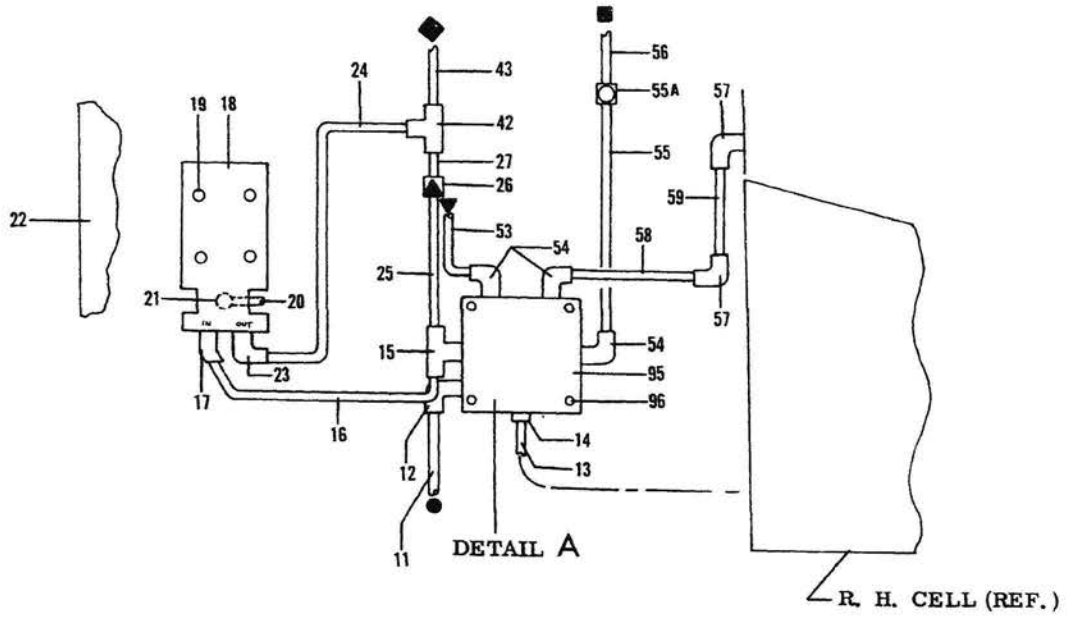
BEECHCRAFT
BONANZA 33 THRU E33
ILLUSTRATED PARTS CATALOG

FIGURE 52A
FUEL SYSTEM
CD-388 AND AFTER

BEECHCRAFT
 BONANZA 33 THRU E33
 ILLUSTRATED PARTS CATALOG



BEECHCRAFT
 BONANZA 33 THRU E33
 ILLUSTRATED PARTS CATALOG



02/24/84

FIGURE 52A. FUEL SYSTEM
 /SHEET 2 OF 2 SHEETS/

B E E C H C R A F T
B O N A N Z A 3 3 T H R U E 3 3
I L L U S T R A T E D P A R T S C A T A L O G

FIG. & ITEM NO.	PART NO.	DESCRIPTION	1 2 3 4 5 6 7							UNITS PER ASSY	USABLE ON CODE
			1	2	3	4	5	6	7		
52A	33-92000-21	SYSTEM INSTL,STD 25 GALLON CELLS.								NP	1
	35-921155	SYSTEM INSTL,OPT 39 GAL CELLS								NP	2
	35-921155-107	SYSTEM INSTL,OPT 40 GAL CELLS								NP	3
- 1	AN6270-2-13 1/2	. HOSE ASSY,FUEL PRESSURE TO WHEEL WELL								1	2
- 2	AN837-2D	. ELBOW								1	2
	AN960-516	. WASHER.								2	2
	AN924-2D	. NUT								1	2
- 3	35-921154-59	. TUBE ASSY,FUEL PRESSURE IN WHEEL WELL								1	2
	AN833-2D	. ELBOW								1	2
	AN960-516	. WASHER.								2	2
	AN924-2D	. NUT								1	2
- 4	35-921155-83	. TUBE ASSY,FUEL PRESSURE TO GAGE								1	12
	AN6270-3-17 1/2	. HOSE ASSY,FUEL PRESSURE GAGE TO FIREWALL.								1	13
- 5	AN816-3D	. NIPPLE,FUEL PRESSURE GAGE & REAR BAFFLE								2	13
	22-627	. RESTRICTOR.								1	12
	AN832-3	. UNION,FIREWALL.								1	13
	AN924-3	. NUT								1	13
	AN960-616	. WASHER.								1	13
- 6	MS28741-3-0130	. HOSE ASSY,FIREWALL TO REAR ENGINE BAFFLE.								1	13
	AN6270-2-13 1/2	. HOSE ASSY,DISTRIBUTOR VALVE TO BAFFLE								1	12
- 7	MS28741-4-0160	. HOSE ASSY,DISTRIBUTOR VALVE TO BAFFLE								1	13
	AN832-2D	. UNION								2	12
	AN832-4D	. UNION								2	13
	AN960-516	. WASHER.								4	12
	AN960-716	. WASHER.								4	13
	AN924-2D	. NUT								2	12
	AN924-4D	. NUT								2	13
- 8	AN6270-2-16	. HOSE ASSY,FUEL PRESSURE BAFFLE TO FIRE WALL								1	12
	MS28741-4-0120	. HOSE ASSY,FUEL PRESSURE BAFFLE TO FIRE WALL								1	13
- 9	35-921155-121	. TUBE ASSY,FUEL PRESSURE TO FLOW METER								1	12
	AN6270-4-18	. HOSE ASSY,FUEL PRESSURE TO FLOW METER								1	13
- 10	AN816-4D	. UNION								1	3
- 11	35-921155-73	. TUBE ASSY,LH CELL TO SELECTOR VALVE								1	4
- 12	AN833-6D	. ELBOW								1	4
- 13	35-921152-71	. TUBE ASSY,RH FUEL CELL TO SELECTOR VALVE.								1	1
- 14	AN815-6D	. UNION								1	1
	MS29512-06	. GASKET /SUPERSEDES MS29512-61/.								1	1
	AN936B416	. TEE								4	4
	MS29512-06	. GASKET /SUPERSEDES MS29512-6/.								1	4
	AN924-6D	. NUT								1	4
- 16	35-921155-65	. TUBE ASSY,STRAINER TO PUMP INLET.								1	4
- 17	AN837-6D	. ELBOW								1	4
	MS29512-06	. GASKET /SUPERSEDES MS29512-6/.								1	4
	AN924-6D	. NUT								1	4
- 18	35-921154-608	. PUMP,BOOST.								1	4
		/ATTACHING PARTS/									
- 19	AN74-5	. BOLT.								4	
	AN960-416	. WASHER.								4	
- 20	35-921154-49	. TUBE ASSY,PUMP DRAIN.								1	4
- 21	AN823-4	. ELBOW								1	4
- 22	35-921154-3	. BRACKET ASSY,BOOST PUMP AND SELECTOR VALVE.								1	4
- 23	AN833-6D	. ELBOW								1	4
- 24	35-921154-19	. TUBE ASSY,PUMP TO TEE								1	4
- 25	35-921155-67	. TUBE ASSY,STRAINER TO CHECK VALVE								1	4
- 26	367-00	. VALVE,CHECK								1	4
- 27	35-921154-27	. TUBE ASSY,CHECK VALVE TO TEE.								1	4
- 28	35-921155-105	. TUBE ASSY LH FUEL CELL TO SELECTOR VALVE.								1	5
- 29	AN833-6D	. ELBOW								3	5
	MS29512-06	. GASKET /SUPERSEDES MS29512-6/.								3	5
	AN924-6D	. NUT								3	5
- 30	35-921155-91	. TUBE ASSY,STRAINER TO PUMP INLET.								1	5
- 31	6C5XD	. ELBOW								1	5
	MS29512-06	. GASKET /SUPERSEDES MS29512-6/.								1	5
- 32	35-921155-3	. BRACKET ASSY,BOOST PUMP & SELECTOR VALVE.								1	5

B E E C H C R A F T
B O N A N Z A 3 3 T H R U E 3 3
I L L U S T R A T E D P A R T S C A T A L O G

FIG. & ITEM NO.	PART NO.	DESCRIPTION	UNITS PER ASSY							USABLE ON CODE
			1	2	3	4	5	6	7	
52A - 33	35-921255	• CLAMP ASSY, BOOST PUMP /ATTACHING PARTS/							1	5
- 34	AN4-4A/M/ AN936B416	• BOLT. • WASHER.							4 4	
	AN960-10	• WASHER.							1	5
	MS20365-1032	• NUT							1	5
- 36	35-921154-612	• PUMP ASSY, BOOST /INCLUDES FITTINGS/							1	5
- 37	2140-53	• ELBOW, PUMP DRAIN.							1	5
- 38	35-921155-95	• TUBE, PUMP DRAIN							1	5
- 39	106200H4-12	• HOSE.							1	5
- 40	35-921155-93	• TUBE ASSY, PUMP OUTLET							1	5
- 41	AN832-6D	• UNION							1	5
- 42	AN824-6D	• TEE							1	4
- 43	35-921154-43	• TUBE ASSY, FUEL TO FIRE WALL							1	1
- 44	AN833-6	• ELBOW							1	1
	AN960-916	• WASHER.							1	1
	AN924-9	• NUT							1	1
- 45	35-921154-606	• HOSE ASSY, FIREWALL TO PUMP /INCLUDES LAGGING/							1	1
- 46	AN816-2B	• NIPPLE.							1	1
- 47	35-921154-103	• TUBE ASSY, PUMP DRAIN.							1	1
- 48	MS28741-4-0102	• HOSE ASSY, RETURN FROM PUMP.							1	1
- 49	33-920000-11	• TUBE ASSY, RETURN TO CHECK VALVE							1	1
- 50	366-00	• VALVE, CHECK /SUPERSEDES 1111-595272/.							1	1
- 51	33-920000-13	• TUBE ASSY, CHECK VALVE TO FIREWALL RETURN.							1	1
- 52	AN833-4	• ELBOW							1	1
	AN960-716	• WASHER.							1	1
	AN924-4	• NUT							1	1
- 53	35-921155-63	• TUBE ASSY, FIREWALL TO SELECTOR VALVE.							1	1
- 54	AN833-4D	• ELBOW							3	1
	MS29512-4	• GASKET.							3	1
	AN924-4D	• NUT							3	1
- 55	35-921155-75	• TUBE ASSY, RETURN FROM SELECTOR VALVE LH							1	1
- 55A	AN815-4D	• UNION							1	1
- 56	35-921154-23	• TUBE ASSY, RETURN TO FUSELAGE SKIN LH.							1	1
- 57	AN821-4D	• ELBOW							5	1
- 58	35-921155-69	• TUBE ASSY, RETURN FROM SELECTOR VALVE RH							1	1
- 59	35-921154-41	• TUBE ASSY, RETURN TO FUSELAGE SKIN RH.							1	1
- 60	35-921154-71	• TUBE ASSY, RETURN TO TANK LH /25 GAL. CELLS/							1	1
	35-921155-49	• TUBE ASSY, RETURN TO TANK LH /39 OR 40 GAL. CELLS/							1	1
	35-921154-73	• TUBE ASSY, RETURN TO TANK RH /25 GAL. CELLS/							1	1
	35-921155-53	• TUBE ASSY, RETURN TO TANK RH /39 OR 40 GAL. CELLS/							1	1
- 61	106200H4-15	• HOSE.							2	1
- 62	35-921154-95	• ELBOW, RETURN TO TANK.							2	1
- 63	35-921105	• TUBE, SCUPPER DRAIN /25 GAL. CELLS ONLY/							2	1
- 64	106200H4-9	• HOSE /25 GAL. CELLS ONLY/							2	1
- 65	33-920000-1	• TUBE, FILLER VENT LH /25 GAL. CELLS/							1	1
	33-920000-2	• TUBE, FILLER VENT RH /25 GAL. CELLS/							1	1
- 66	1060432K022	• HOSE /25 GAL. CELLS/.							2	1
- 67	35-924059	• WELD ASSY, LH VENT /25 GAL. CELLS/							1	1
- 67A	35-921155-99	• WELD ASSY, LH VENT /39 OR 40 GAL. CELLS/							1	1
	35-924060	• WELD ASSY, RH VENT /25 GAL. CELLS/							1	1
	35-921155-100	• WELD ASSY, RH VENT /39 OR 40 GAL. CELLS/							1	1
- 68	366-00	• VALVE, CHECK /39 OR 40 GAL. CELLS/ /SUPERSEDES 1111-595272/							2	1
- 69	35-921155-101	• TUBE, VALVE TO FLANGE /39 OR 40 GAL. CELLS/.							2	1
- 70	106200H4-15	• HOSE.							4	1
- 71	50-920077	• FLANGE, VENT /39 OR 40 GAL. CELLS/							2	1
- 72	35-921154-69	• TUBE ASSY, LH WELD ASSY TO FUSELAGE SKIN VENT. /25 GAL. CELLS/							1	1
	35-921155-51	• TUBE ASSY, LH WELD ASSY TO FUSELAGE SKIN VENT. /39 OR 40 GAL. CELLS/							1	1
	35-921154-75	• TUBE ASSY, RH WELD ASSY TO FUSELAGE SKIN VENT. /25 GAL. CELLS/							1	1

B E E C H C R A F T
B O N A N Z A 3 3 T H R U E 3 3
I L L U S T R A T E D P A R T S C A T A L O G

FIG. & ITEM NO.	PART NO.	DESCRIPTION	UNITS							USABLE ON CODE
			1	2	3	4	5	6	7	
52A	35-921155-55	. TUBE ASSY,RH WELD ASSY TO FUSELAGE SKIN VENT. /39 OR 40 GAL. CELLS/							1	1
- 73	35-921154-53	. TUBE ASSY,LH OVERBOARD VENT							1	10
	35-921155-127	. TUBE ASSY,LH OVERBOARD VENT							1	11
	AN737RM26	. CLAMP							2	11
	414-920022-5	. SCOOP							1	11
	35-921154-54	. TUBE ASSY,RH OVERBOARD VENT							1	10
	35-921155-128	. TUBE ASSY,RH OVERBOARD VENT							1	11
	106200H6-27	. HOSE							1	11
	414-920022-3	. SCOOP							1	11
- 74	45-921541	. STRAINER,FUEL							2	1
- 75	CCA3400	. VALVE,DRAIN /ATTACHING PARTS/							2	1
- 76	35-921532	. WASHER							1	
- 77	35-921533	. CLAMP							1	
- 78	35-921548	. PLACARD,SUMP DRAIN.							2	1
- 79	35-380023	. TRANSMITTER,INBD FUEL LEVEL							2	6
	95-380012-5	. TRANSMITTER,INBD FUEL LEVEL							2	7
- 80	95-369010-3	. TRANSMITTER,OUTBD LH FUEL LEVEL							1	6
	95-369010-4	. TRANSMITTER,OUTBD RH FUEL LEVEL							1	6
	95-380012-7	. TRANSMITTER,OUTBOARD FUEL LEVEL /ATTACHING PARTS/							2	7
	AN520-10-8	. SCREW							2	
	AN520-10-6	. SCREW							8	
- 80A	FCA25750	. GASKET,TRANSMITTER /SUPERSEDES 35-921503/							2	1
- 81	35-921242-5	. CELL ASSY,LH /39 OR 40 US GAL./ /SUPERSEDES 35-921242-7/							1	1
	35-921242-6	. CELL ASSY,RH /39 OR 40 US GAL./ /SUPERSEDES 35-921242-8/							1	1
- 82	95-921018-1	. PLACARD,WHITE FUEL /39 US GAL./							2	9
	95-921018-3	. PLACARD,BLACK FUEL /39 US GAL./							2	9
- 83	33-921011-1	. PLACARD,WHITE FUEL /USE 80/87 OCTANE FUEL/.							2	9
	33-921011-3	. PLACARD,BLACK FUEL /USE 80/87 OCTANE FUEL/.							2	9
- 84	95-921016-1	. PLACARD,WHITE /FUEL FILLER NOZZLE CAUTION/.							2	9
	95-921016-3	. PLACARD,BLACK /FUEL FILLER NOZZLE CAUTION/.							2	9
- 85	33-921012-1	. PLACARD,WHITE /39 US GAL,USE 80/87 OCTANE FUEL FILLER NOZZLE CAUTION/							2	8
	33-921012-3	. PLACARD,BLACK /39 US GAL.,USE 80/87 OCTANE, FUEL FILLER NOZZLE CAUTION/							2	8
- 86	33-921012-5	. PLACARD,WHITE /40 US GAL.,USE 80/87 OCTANE, FUEL FILLER NOZZLE CAUTION/							2	3
	33-921012-7	. PLACARD,BLACK /40 US GAL.,USE 80/87 OCTANE, FUEL FILLER NOZZLE CAUTION/							2	3
- 87	95-921014-1	. PLACARD,WHITE FUEL STRAINER ACCESS DOOR							1	1
	95-921014-3	. PLACARD,BLACK FUEL STRAINER ACCESS DOOR							1	1
- 88	FCB25722	. GASKET,FILLER HOLE OR COVER PLATE /SUPERSEDES 35-921502/							2	1
- 89	50-921509-9	. PLATE,FILLER HOLE COVER /ATTACHING PARTS/							2	1
- 90	AN74-3/M/ AN936A416	. BOLT WASHER							24 24	
- 91	50-921509-37	. CLIP ASSY,DOOR SUPPORT.							2	1
- 92	35-921249	. ADAPTER ASSY,FUEL FILLER. /SUPERSEDES 37826/ /ATTACHING PARTS/							2	1
- 93	AN509-10R9	. SCREW							24	
- 94	96-380035	. CAP ASSY,FUEL FILLER. /SUPERSEDES 37810-1/							2	1

B E E C H C R A F T
B O N A N Z A 3 3 T H R U E 3 3
I L L U S T R A T E D P A R T S C A T A L O G

FIG. & ITEM NO.	PART NO.	DESCRIPTION							UNITS PER ASSY	USABLE ON CODE
		1	2	3	4	5	6	7		
52A - 95	35-921155-603	1	1
		VALVE ASSY, FUEL SELECTOR /WITH PIPE FITTINGS/ /ATTACHING PARTS/								
- 96	AN74-3/M/ AN9368416	2	
		BOLT.								
		2	
		WASHER.								
		-----*								
- 97	HE833	1	1
		VALVE, SELECTOR.								
- 98	45-920036-1	1	1
		HOUSING, STRAINER.								
		/ATTACHING PARTS/								
- 99	AN500A10-8 AN935-10	4	
		SCREW								
		4	
		WASHER.								
		-----*								
-100	50-920030-4	1	1
		GASKET, STRAINER HOUSING								
-101	50-920040-10	1	1
		STRAINER.								
-102	1115042T0324-3	1	1
		SPRING, FUEL STRAINER.								
-103	50-920057	1	1
		PLATE, STRAINER BOTTOM								
		/ATTACHING PARTS/								
-104	AN500A10-12 AN960-10L	2	
		SCREW								
		2	
		WASHER.								
		-----*								
-105	35-921181	1	1
		GASKET, STRAINER BOTTOM.								
-106	CCA4850	1	1
		VALVE, DRAIN								
-107	35-924255-1	1	1
		HANDLE ASSY, SELECTOR VALVE.								
		/ATTACHING PARTS/								
-108	A905	1	
		PIN								
	AN380-1-1	1	
		PIN, COTTER.								
		-----*								

NOTE THE FUEL LEVEL TRANSMITTERS, FUEL CAPS. AND CAP ADAPTERS, AND FUEL CELLS LISTED ARE FOR THE 39 AND 40 GALLON FUEL CELLS ONLY. SEE FIG. 52 FOR CORRESPONDING PARTS TO BE USED WITH THE 25 GALLON FUEL CELLS.

C O D E S O F E F F E C T I V I T Y

- | | |
|----------------------|------------------------|
| 1 CD-388 AND AFTER | 2 CD-388 THRU CD-813 |
| 3 CD-814 AND AFTER | 4 CD-388 THRU CD-639 |
| 5 CD-640 AND AFTER | 6 CD-388 THRU CD-625 |
| 7 CD-626 AND AFTER | 8 CD-388 THRU CD-513 |
| 9 CD-514 THRU CD-814 | 10 CD-388 THRU CD-887 |
| 11 CD-888 AND AFTER | 12 CD-814 THRU CD-1118 |
| 13 CD-1119 AND AFTER | |