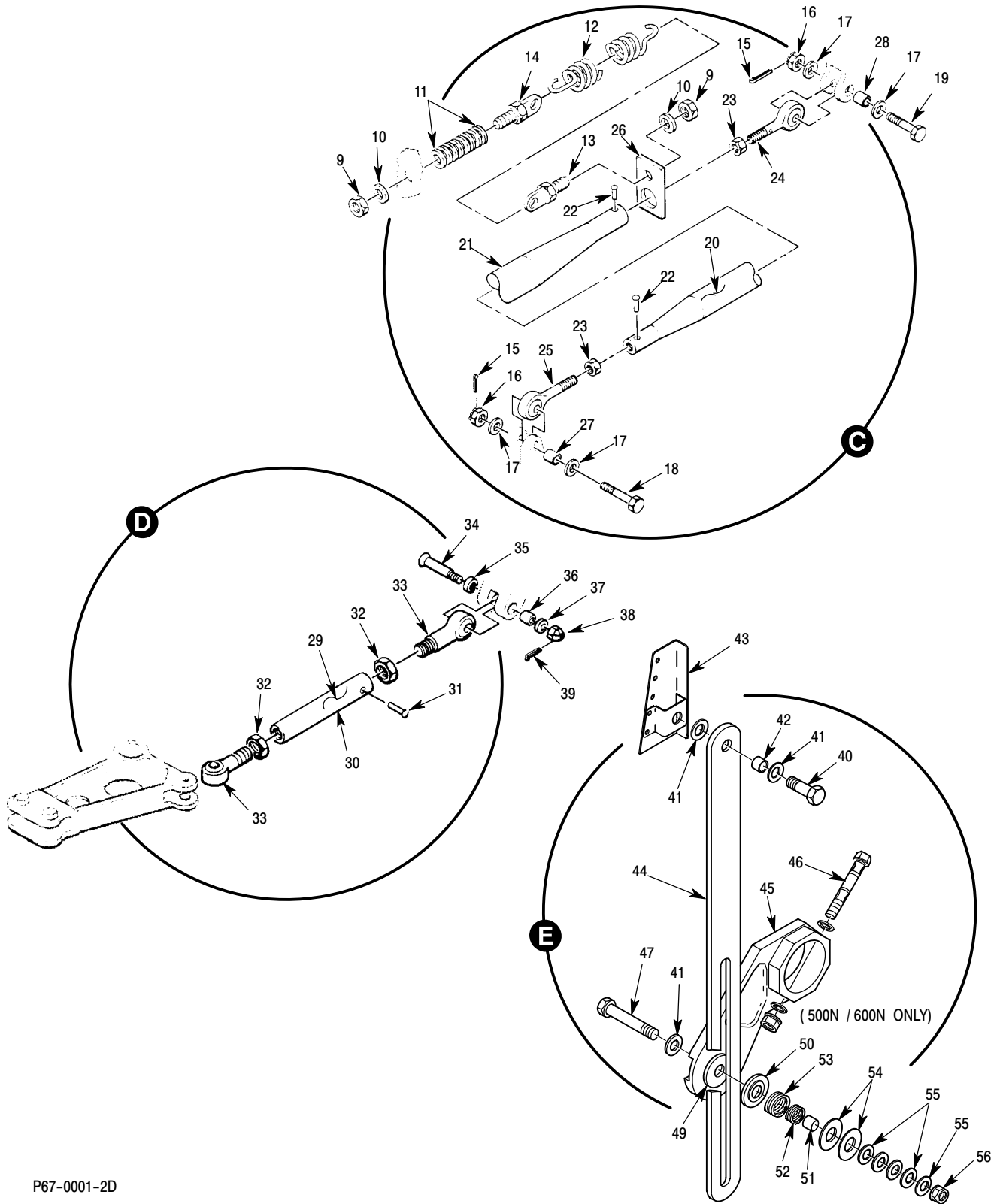


P67-0001-1C

Figure 1. Flight Controls Installation - General - (Sheet 1 of 2)



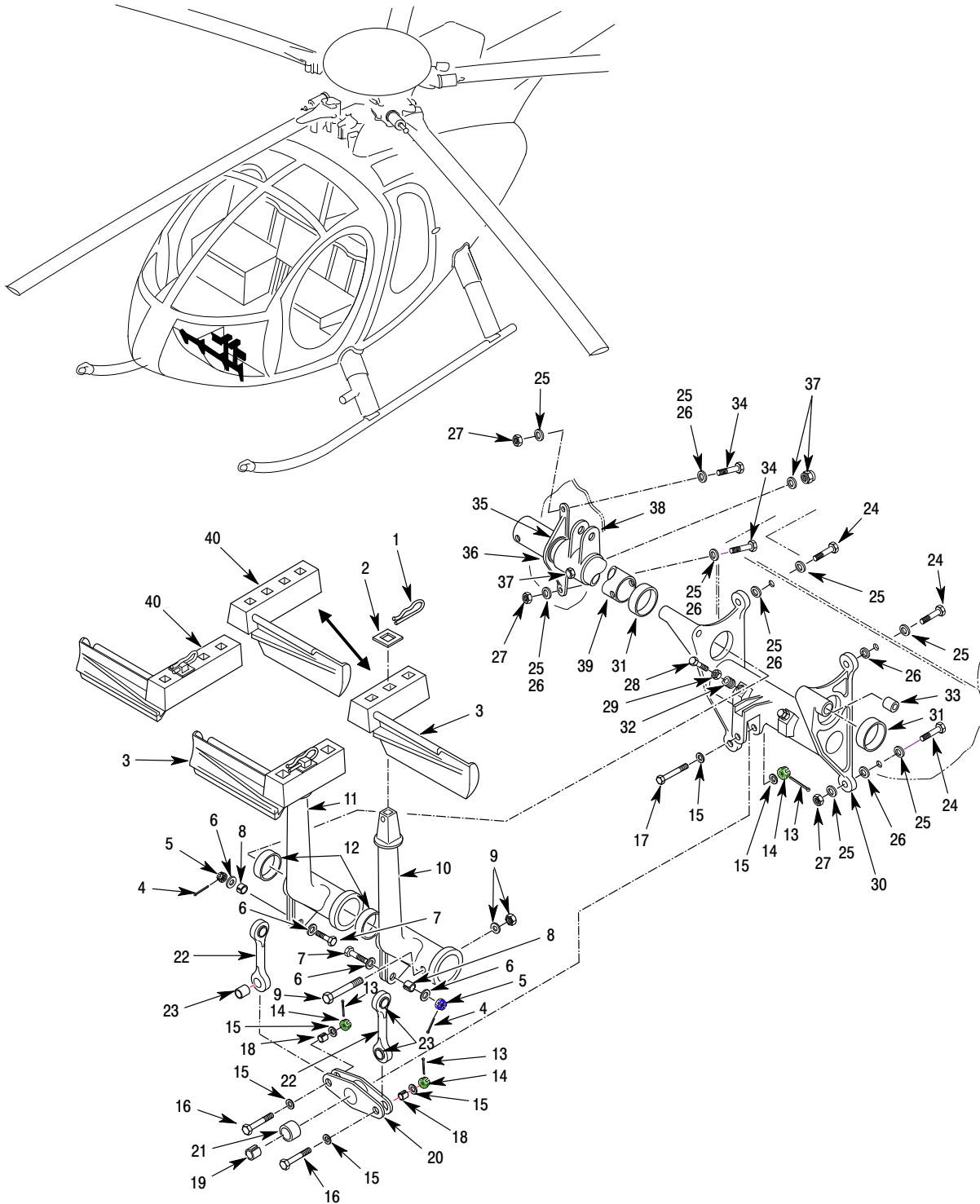
P67-0001-2D

Figure 1. Flight Controls Installation - General - (Sheet 2 of 2)

MD Helicopters Inc.  
ILLUSTRATED PARTS CATALOG

CSP-IPC-4

I L L	Fig. No.	Item No.	Part Number	Description	Qty. per Assy.	Used on Code	Model / Serial No. From - To
	1	43	500N2502-5	•• Bracket Assy .....	REF		N 6XX
	1	44	500N7012-3	•• Link .....	1		N 6XX
	1	45	500N7011-7	•• Friction Arm .....	1		N 6XX
	1	46	369A7504	•• Bushing Assembly (Preferred Part) .....	1		N 6XX
	1	46	369A7504-11	•• Bushing Assembly (Alternate) .....	1		N 6XX
	1	47	NAS1304-23	•• Bolt .....	1		N
	1	47	NAS6604-23	•• Bolt .....	1		6XX
	1	48	HS306-327H	•• Surface Washer .....	A/R		N 6XX
				Installed Between Arm And Disc For Alignment With Upper Mount Bracket			
	1	49	500N7013-1	•• Friction Disc .....	1		N 00001-000053
				Replaced By 500N7013-3			
	1	49	500N7013-3	•• Friction Disc .....	1		N 000054-SUBS 6XX
	1	50	369A7115	•• Friction Disc Retainer .....	1		N 000001-000053
	1	50	500N7013-5	•• Friction Disc Retainer .....	1		N 000054-SUBS 6XX
	1	51	NAS43DD4-20	•• Spacer .....	1		N 6XX
	1	52	369A7329	•• Spring (Small Coil) .....	1		N 6XX
	1	53	369A7117	•• Spring (Large Coil) .....	1		N 6XX
	1	54	AN970-5	•• Washer .....	2		N 6XX
	1	55	AN960KD416	•• Washer .....	A/R		N
	1	55	NAS1149D0463K	•• Washer .....	A/R		6XX
	1	56	MS21042-4	•• Nut .....	1		N 6XX



P67-2002A

Figure 2. Tail Rotor Control Foot Pedal Installation (Single - LH Command)

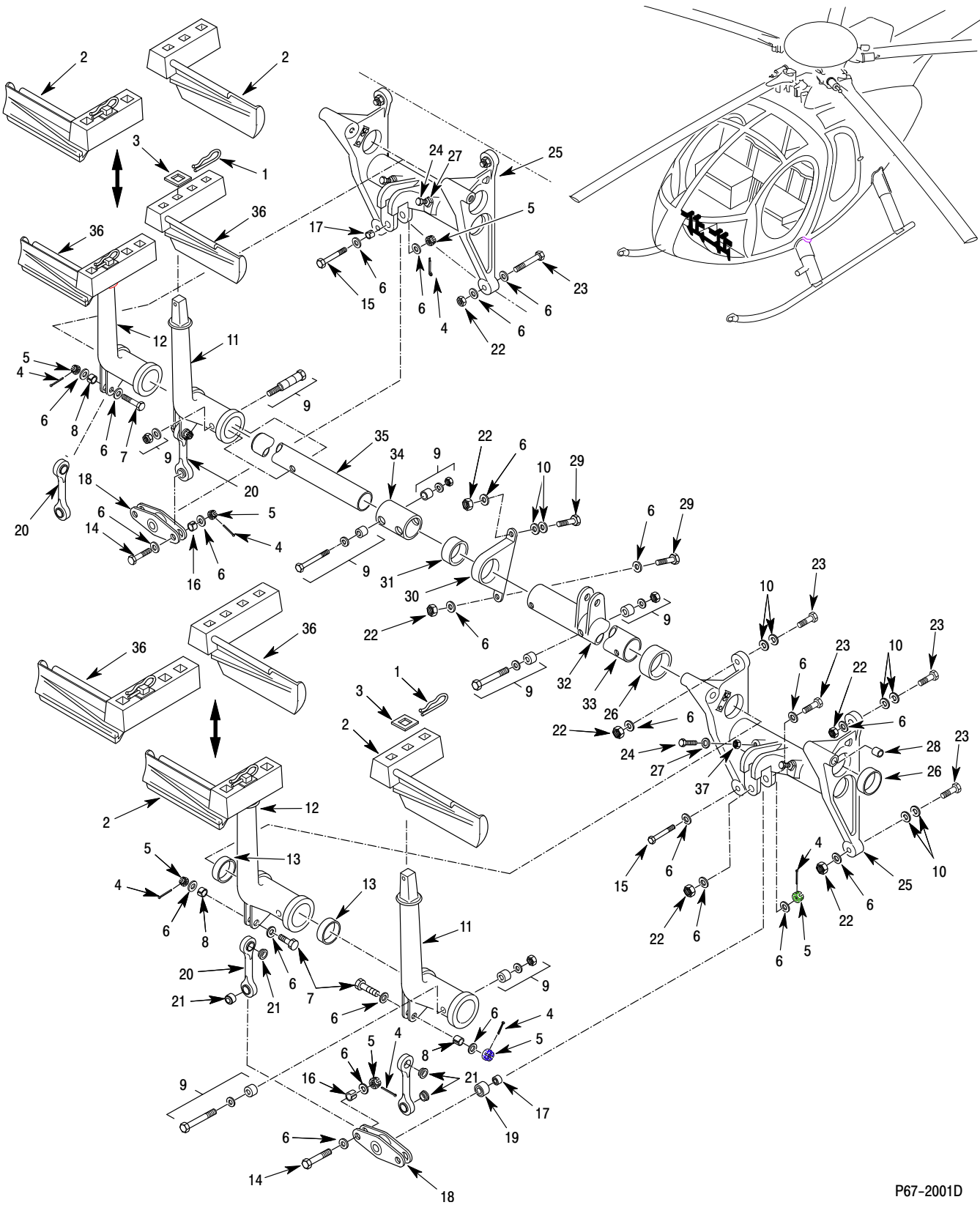


Figure 1. Tail Rotor Control Foot Pedal Installation (Dual) – All Models

MD Helicopters Inc.  
ILLUSTRATED PARTS CATALOG

CSP-IPC-4

I L L	Fig. No.	Item No.	Part Number	Description	Qty. per Assy.	Used on Code	Model / Serial No. From - To
	1		Deleted	Deleted	REF	A	
	1		369D297500-501	Pedal Instl, Foot, Tail Rotor (Dual) RH Command ..... Not Procurable Replaced By 369D297500-503 Ref 67-00-00 For NHA	REF	B	D 000001-SUBS E 000001-000214 FF 000001-000054
	1		369D297500-503	Pedal Instl, Foot, Tail Rotor (Dual) RH Command ..... Not Procurable Ref 67-00-00 For NHA	REF	C	D 000001-SUBS E 000215-SUBS FF 000055-SUBS KIT 000002-SUBS
	1		369A7500-501	Pedal Instl, Tail Rotor Control Foot (Single) See Fig 2 For BKDN Intrch With 369A7500-503 Ref 67-00-00 For NHA	REF	D	D 000001-001461 E 000001-000214
	1		369A7500-503	Pedal Instl, Tail Rotor Control Foot (Single) Replaced By 369A7500-507 See Fig 2 For BKDN	REF	E	D 001462-SUBS E 000001-000214 FF 000001-000054
	1		Deleted	Deleted	REF	F	
	1		369A7500-507	Pedal Instl, Tail Rotor Control Foot (Single) See Figure 2 ..... Not Procurable Ref 67-00-00 For NHA	REF	G	E 000215-SUBS FF 000055-SUBS N 000001-SUBS 6XX-000002-SUBS
	1	1	AN415-2	• Pin .....	4	A-C	
	1	1	AN415-2	• Pin .....	2	D,E, G	
	1	2	Deleted	Deleted	1	F	
	1	2	Deleted	Deleted	1	F	
	1	2	369A7502-4	• Pedal, LH (Magnesium) ..... Replaced By 369A7502-6	2	A-C, F	D
	1	2	369A7502-4	• Pedal, LH (Magnesium) ..... Replaced By 369A7502-6	1	D,E, G	
	1	2	369A7502-3	• Pedal, RH (Magnesium) ..... Replaced By 369A7502-5	2	A-C, F	D
	1	2	369A7502-3	• Pedal, RH (Magnesium) ..... Replaced By 369A7502-5	1	D,E, G	
	1	2	369A7502-6	• Pedal, LH (Magnesium) ..... Intrch With 369A7502-4 Replaced By 369D27502-4 (Use With Extended Canopy)	2	A,B,F	D 000001-SUBS E 000001-000214 FF 000001-000054
	1	2	369A7502-6	• Pedal, LH (Magnesium) ..... Intrch With 369A7502-4 Replaced By 369D27502-4 (Use With Extended Canopy)	1	D,E	
	1	2	369A7502-5	• Pedal, RH (Magnesium) ..... Intrch With 369A7502-3 Replaced By 369D27502-3 (Use With Extended Canopy)	2	A,B,F	D 000001-SUBS E 000001-000214 FF 000001-000054
	1	2	369A7502-5	• Pedal, RH (Magnesium) ..... Intrch With 369A7502-3 Replaced By 369D27502-3 (Use With Extended Canopy)	1	D,E	
	1	3	369D297500-7	• Washer .....	AR	A-C	
	1	3	369D297500-5	• Washer .....	AR	A-C	
	1	3	369D297500-3	• Washer .....	AR	A-C	

MD Helicopters Inc.  
ILLUSTRATED PARTS CATALOG

I L	Fig. No.	Item No.	Part Number	Description	Qty. per Assy.	Used on Code	Model / Serial No. From - To
	1	4	MS24665-153	• Pin, Cotter .....	10	A-C, F	
	1	4	MS24665-153	• Pin, Cotter .....	5	D,E, G	
	1	5	MS17826-4	• Nut, Self-Locking, Castellated, Hexagon .	10	A-C, F	
	1	5	MS17826-4	• Nut, Self-Locking, Castellated, Hexagon .	5	D,E, G	
	1	6	AN960PD416L	• Washer .....	AR		
	1	7	NAS6204C14D	• Bolt, Hex Head, Close Tolerance, Alloy Steel .....	2	D-G	
	1	7	NAS1104-14D	• Bolt .....	4	A-C	
	1	8	MHS626-4-360	• Bushing .....	4	A-C, F	
	1	8	MHS626-4-360	• Bushing .....	2	A-C, F	
	1	9	369A7504-11	• Bushing Assy (Expansion Bolt) ..... May Be Used As Altn For 369A7504 (369A7504 Is Preferred Part)	2	D,E, G	
	1	9	369A7504-11	• Bushing Assy (Expansion Bolt) ..... May Be Used As Altn For 369A7504 (369A7504 Is Preferred Part)	5	A-C	
	1	9	Deleted	Deleted	3	F	
	1	9	369A7504	• Bushing Assy (Expansion Bolt) ..... (Preferred Part) (Intrch With 369A7504-11)	2	D	
	1	9	369A7504	• Bushing Assy (Expansion Bolt) ..... (Preferred Part) (Intrch With 369A7504-11)	1	E-G	
	1	10	AN960KD416L	• Washer .....	AR		
	1	10	AN960KD416	• Washer .....	AR		
	1	11	Deleted	Deleted	2	F	
	1	11	369A7501-BSC	• Pedal Arm Assy, LH (Magnesium) ..... Intrch With 369A7501-12	2	A-C	D
	1	11	369A7501-BSC	• Pedal Arm Assy, LH (Magnesium) ..... Intrch With 369A7501-12	1	D	
	1	11	369A7501-7	• Pedal Arm Assy, Left (Magnesium) ..... Intrch With 369A7501-12	2	B,C,F	
	1	11	369A7501-7	• Pedal Arm Assy, Left (Magnesium) ..... Intrch With 369A7501-12	1	E,G	
	1	11	369A7501-12	• Pedal Arm Assy, Left (Magnesium) ..... Intrch With 369A7501-7 Replaced By 369A7501-14	2	B,F	
	1	11	369A7501-12	• Pedal Arm Assy, Left (Magnesium) ..... Intrch With 369A7501-7 Replaced By 369A7501-14	1	E,G	
	1	11	369A7501-14	• Pedal Arm Assy, Left (Magnesium) ..... Altn 369D297501-2	2	A-C, F	D SPARES E 000485-SUBS FF 000092-SUBS N 000050-SUBS 6XX 000002-SUBS
	1	11	369A7501-14	• Pedal Arm Assy, Left (Magnesium) ..... Altn 369D297501-2	1	G	
	1	12	Deleted	Deleted	2	F	

MD Helicopters Inc.  
ILLUSTRATED PARTS CATALOG

CSP-IPC-4

I L	Fig. No.	Item No.	Part Number	Description	Qty. per Assy.	Used on Code	Model / Serial No. From - To
	1	12	369A7509-BSC	• Pedal Arm Assy, Right, (Magnesium) . . . . Intrch With 369A7509-7	2	A-C, F	D
	1	12	369A7509-BSC	• Pedal Arm Assy, Right, (Magnesium) . . . . Intrch With 369A7509-7	1	DEG	D
	1	12	369A7509-7	• Pedal Arm Assy, Right, (Magnesium) . . . . Intrch With 369A7509-BSC Replaced By 369A7509-9	2	AB	
	1	12	369A7509-7	• Pedal Arm Assy, Right, (Magnesium) . . . . Intrch With 369A7509-BSC Replaced By 369A7509-9	1	DEG	
	1	12	369A7509-9	• Pedal Arm Assy, Right (Magnesium) . . . . . Altn 369D297501-3	2	A-CF	D SPARES E 000485-SUBS FF 000092-SUBS N 000050-SUBS 6XX 000002-SUBS
	1	12	369A7509-9	• Pedal Arm Assy, Right (Magnesium) . . . . . Altn 369D297501-3	1	G	
	1	13	369A7004	• • Bushing . . . . .	4		
	1	14	NAS6204C15D	• Bolt, Hex Head, Close Tolerance, Alloy Steel . . . . .	2	D-G	
	1	15	Deleted	Deleted	2	F	
	1	15	NAS6204C22D	• Bolt, Hex Head, Close Tolerance, Alloy Steel . . . . .	1	DEG	
	1	16	MHS626-4-340	• Bushing . . . . .	4	A-C	
	1	16	MHS626-4-340	• Bushing . . . . .	2	D-G	
	1	17	MHS626-4-280	• Bushing . . . . .	2	A-C	
	1	17	MHS626-4-280	• Bushing . . . . .	1	D-G	
	1	18	Deleted	Deleted	2	F	
	1	18	369A7507	• Bellcrank Assy, Pedal Buss (Magnesium)	2	A-CF	
	1	18	369A7507	• Bellcrank Assy, Pedal Buss (Magnesium)	1	DEG	
	1	18	369A7507-7	• Bellcrank Assy . . . . . Intrch With 369A7507	1	DEG	E 000001-SUBS FF 000001-SUBS
	1	18	369A7507-7	• Bellcrank Assy . . . . . Intrch With 369A7507	2	F	E 000001-SUBS FF 000001-SUBS
	1	19	369A7951-23	• • Bearing . . . . .	1		
	1	20	369A7506	• Link Assy, Pedal . . . . .	4	A-CF	
	1	20	369A7506	• Link Assy, Pedal . . . . .	2	DEG	
	1	21	369A7951-7	• • Bearing . . . . .	2		
	1	22	MS21042L4	• Nut, Self-Locking, Reduced Hex, Ring Base . . . . .	10	A-C	
	1	22	MS21042-4	• Nut, Self-Locking, Reduced Hex, Ring Base . . . . .	10	D-G	
	1	23	NAS1304-11	• Bolt . . . . .	8		
	1	24	NAS428-4-10	• Bolt . . . . .	4	A-C	
	1	24	NAS428-4-10	• Bolt . . . . .	2	D-G	
	1	25	Deleted	Deleted	1	F	
	1	25	Deleted	Deleted	1	F	
	1	25	369A7505-8	• Bracket Assy, Pedal Support, LH (Magnesium) . . . . .	1		
	1	25	369A7505-7	• Bracket Assy, Pedal Support, RH (Magnesium) . . . . .	1		



MD Helicopters Inc.  
ILLUSTRATED PARTS CATALOG

I L L	Fig. No.	Item No.	Part Number	Description	Qty. per Assy.	Used on Code	Model / Serial No. From - To
	1	26	369A7951-17	•• Bearing .....	2		
	1	27	NAS1394C-4L	•• Insert .....	2		
	1	28	HS6102509-190-1937	•• Bushing .....	2		
	1	28	369A7505-13	•• Bushing .....	2		
				Intrch With HS6102509190-1937			
	1	29	NAS6204-9	• Bolt .....	2		
	1	29	NAS1304-9	• Bolt .....	2		
	1	30	Deleted	Deleted	1	F	
	1	30	369A7512	• Bracket Assy (Magnesium) .....	1		
	1	31	369A7951-17	•• Bearing .....	2		
	1	32	Deleted	Deleted	1	F	
	1	32	369A7511	• Fitting (Magnesium) .....	1		
	1	33	Deleted	Deleted	1	F	
	1	33	369H7531-3	• Tube, Torque .....	1	D,E, G	
				Replaced By 369H7531-9			
	1	33	369H7531-9	• Tube, Torque .....	1	A-E G	D E FF
				Intrch With 369H7531-13, (369H7531-13 Is Preferred Part)			
	1	33	369H7531-13	• Tube, Torque .....	1	A-E G	N
				(Preferred Part) Intrch With 369H7531-9 (Additional Hole For Friction Bracket)			
	1	34	369H7531-7	• Sleeve .....	1	A-C	D E FF
				369D27500-BSC/-501/-503 Instl.			
	1	35	369H7531-11	• Tube, Torque .....	1	A-C	D E FF
				Component Of 369D27500-BSC/-501/-503 Instl.			
	1	36	369D27502-3	• Pedal, RH Extended (Magnesium) .....	2	C,G	E 000215-000509 FF 000055-000095 N 000001-000054
				Replaced By 369D27502-5			
	1	36	369D27502-4	• Pedal, LH Extended (Magnesium) .....	2	C,G	E 000215-000509 FF 000055-000095 N 000001-000054
				Replaced By 369D27502-6			
	1	36	369D27502-5	• Pedal, RH Extended (Magnesium) .....	2	A-C	E 000510-SUBS FF 000096-SUBS N 000055-SUBS 6XX 000002-SUBS
	1	36	369D27502-5	• Pedal, RH Extended (Magnesium) .....	1	E-G	
	1	36	369D27502-6	• Pedal, LH Extended (Magnesium) .....	2	A-C	E 000510-SUBS FF 000096-SUBS N 000055-SUBS 6XX 000002-SUBS
	1	36	369D27502-6	• Pedal, LH Extended (Magnesium) .....	1	E-G	
	1	37	MS35650-3254	• Nut .....	2	D,E, G	