

GENERAL NOTES:

- C&NW RY MERGED INTO UPRR BY ICC FINANCE DOCKET #32133 EFFECTIVE - APRIL 6, 1995

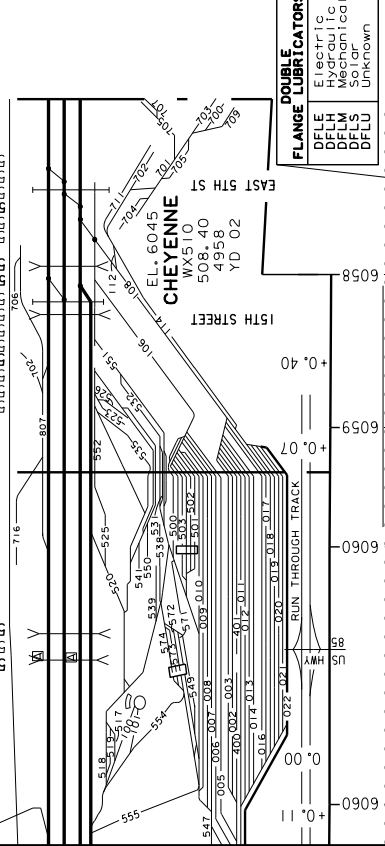
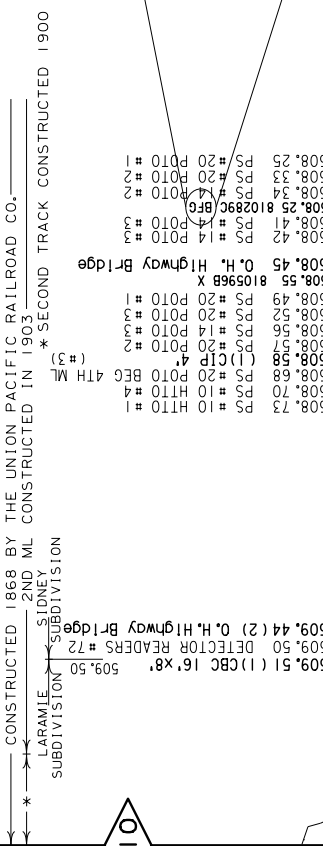
①	=	ADDITIONAL NOTES
ADDITIONAL NOTES		
①		ABANDONED ESTHERVILLE TO TERRILL (DOC #24621) 14.23 MILES EFFECTIVE MARCH 1, 1968 (FORMER MINNEAPOLIS & ST. LOUIS RR)
②		ABANDONED LUVERNE TO HUMBOLDT (SUB 80F) MP 187.8 TO MP 201.5 EFFECTIVE JUNE 28, 1979

STATIONS ON ESTHERVILLE SUBDIVISION			
MP	STATION NAME	CIRC-7	PAGE
48.50	EMMETSBURG	DW022	08
71.10	ESTHERVILLE	DR058	02
00.00	GOLDFIELD	DW071	17
58.60	GRAETTINGER	DW013	06
8.70	HARDY	DW063	16
27.40	OTTOSEN	DW044	12
78.00	SUPERIOR	DR065	01
32.90	WEST BEND	DW038	11

- HISTORICAL DATA INTERESTING FACTS**
- ABSOLUTE SIG.
 - AET DETECTOR
 - HOT WHEEL / SLIDING
 - WHEEL DOWN
 - CRACKED WHEEL INDICATOR
 - DRAG-EQPT. DET.
 - HOT BOX DET.
 - HIGH, WIDE SHIFTED LOAD DET.
 - HIGH WATER DET.
 - IMPACT DETECTOR
 - INT. SIG. & NO.
 - TEMP-WIND GAGE
 - POWER SW.
 - SPRING SW.
 - DEPOT SYMBOL
 - HISTORICAL MARKER
 - YARD LIMIT
- DOT CROSSING**
- STANDARD STRUCTURE**
- BRIDGE OVER 400'
- TUNNEL**
- TUNNEL OVER 400'
- SNOW SHED**

- TOPOGRAPHY**
- ELEV. TOP OF RAIL
- AT STATION M. P.
- CONTROL POINTS & STATION NAMES
- GICP STATION NAMES
- MILE POST LOCATION
- LOT# (CLEAR) OF SIDING
- MAX. GRADE PERCENT (SUB GRADE)**
- SLIDE WARNING**
- EL. ABOVE SEA LEVEL
- FIBER OPTICS**
- C. T. C.
- A. B. S.
- FREIGHT** [35]
- PASSENGER-FREIGHT** [40-35]
- DEGREE OF CURVE** 30 1 20'
- AUTH. SUPER ELEV.** 3-3/4"

- RIGHT RAIL**
- LEFT RAIL**
- JOINTED RAIL**
- CONTINUOUS WELDED RAIL**
- TYPE (SHA=SECOND HAND)
- CONSTRUCTION DATE [Year]
- WOOD TIES**
- STEEL TIES**
- CONCRETE TIES**



STATION	ELEVATION	TYPE	DATE
509.50	600.00	SH 133	1985
509.55	600.00	SH 133	1985
509.60	600.00	SH 133	1985
509.65	600.00	SH 133	1985
509.70	600.00	SH 133	1985
509.75	600.00	SH 133	1985
509.80	600.00	SH 133	1985
509.85	600.00	SH 133	1985
509.90	600.00	SH 133	1985
509.95	600.00	SH 133	1985

TUNNEL TYPE & DESCRIPTION

CLTU	Concrete Lined Tunnel
CSNH	Concrete Snow Shed
NRTU	Natural Rock Tunnel
STLU	Shotcrete Lined Tunnel
TCTU	Timber Concrete Tunnel
TSTU	Timber Sets Tunnel

GRADE XING DATA

B	Bells
BF	Bells, Flashers
BF	Bells, Flashers
BFG	Bells, Flashers, Gates
CBG	Gates, Bells, Flashers, Gates
S	Stop Sign
T	Traffic Signs
W	Wings
X	Xbucks
XS	Xbucks/Stop Signs

BRIDGE SPAN TYPE & DESCRIPTION

BM	Steel Beam Span
BMC	Steel Beam Span Continuous
CBAB	Concrete Arch Bridge
CEB	Concrete Encased Beam
GTC	Concrete Through Girder
DAG	Deck Plate Girder Movable
DTP	Deck Truss Pinned
DTR	Deck Truss Riveted
PCB	Pre-stressed Concrete Box
PCS	Pre-stressed Concrete Slab
PCT	Pre-stressed Concrete Tee
PTP	Pony Truss Pinned
PTR	Pony Truss Riveted
PRCT	Reinforced Concrete Tee
RCT	Reinforced Concrete Tee
RG	Rail Girder
SAB	Stone Arch Bridge
TPC	Through Plate Girder
TTP	Through Truss Pinned
TTM	Through Truss Movable
TTR	Through Truss Riveted Movable
WAG	Wagon Bridge

CULVERT TYPE & DESCRIPTION

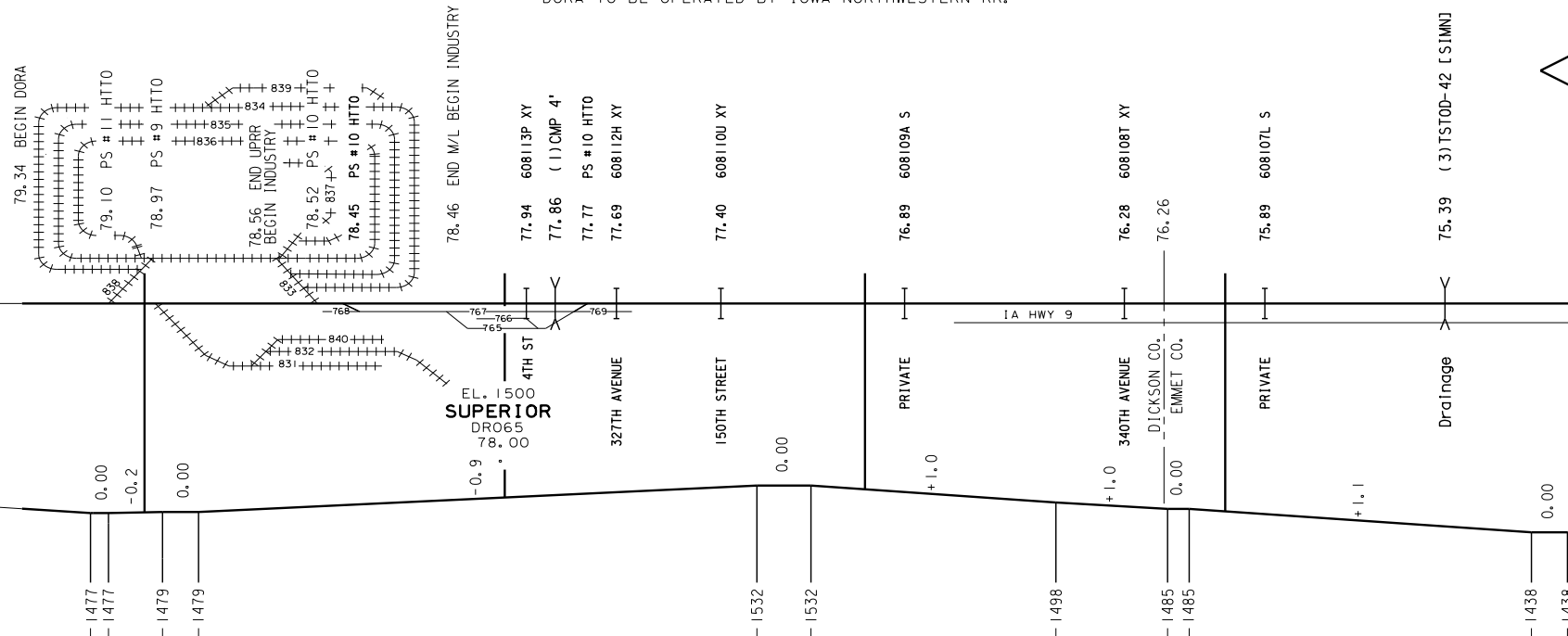
BAC	Brick Arch Culvert
CAC	Concrete Arch Culvert
CCP	Cast Iron Pipe
CMP	Corrugated Metal Pipe
CMPA	CMP Arch
CCP	Concrete Pipe
GIP	Galvanized Iron Pipe
MAC	Masonry Arch Culvert
SAC	Stone Arch Culvert
SBC	Stone Box Culvert
SPCA	Structural Plate Pipe
SSP	Smooth Steel Pipe
VCP	Wetted Clay Pipe
WSP	Wood Stave Pipe

CULVERTS IDENTIFIED IN THE CONDENSED INVENTORY ARE LISTED BY TYPE, IN DIAMETER AND LENGTH, AND (B) MULTIPLE CULVERTS TOTALING 4 FT. IN OVERALL CAN (i.e. 2x24" CMP's WOULD BE INCLUDED).

MULTI-SEGMENT (TYPE) CULVERTS ARE DESIGNATED BY "COMB" (Combination).

CONSTRUCTED BY ROCK ISLAND LINES-1882 ACQUIRED BY C&NW RY-JUNE 1983
 C&NW RY MERGED INTO UPRR BY ICC FINANCE DOCKET #32133 EFFECTIVE-APRIL 6, 1995

* SOLD TO DICKENSON-OSCEOLA RY ASSOC.
 FROM MP 79.34 TP, L 116.55 EFF 4-3-2001
 DORA TO BE OPERATED BY IOWA NORTHWESTERN RR.

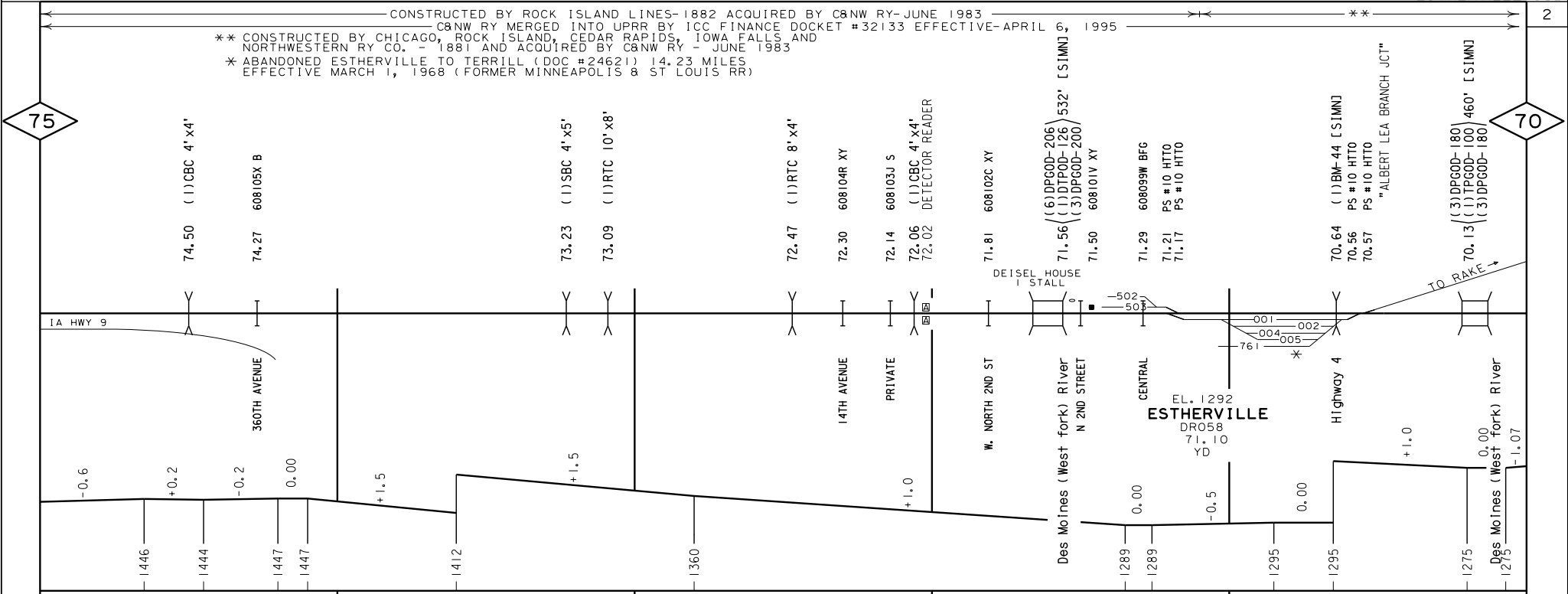


RAIL	SPEED	CURVE	SIMN	TIES	SURF/LINE
10	10	2 1/2"	SH 112 1900	1991	1988
20	20	2 1/2"	SH 112 1987	1985	1987
20	20	2 1/2"	SH 112 1987	1987	1987
20	20	2 1/2"	SH 112 1987	1987	1987

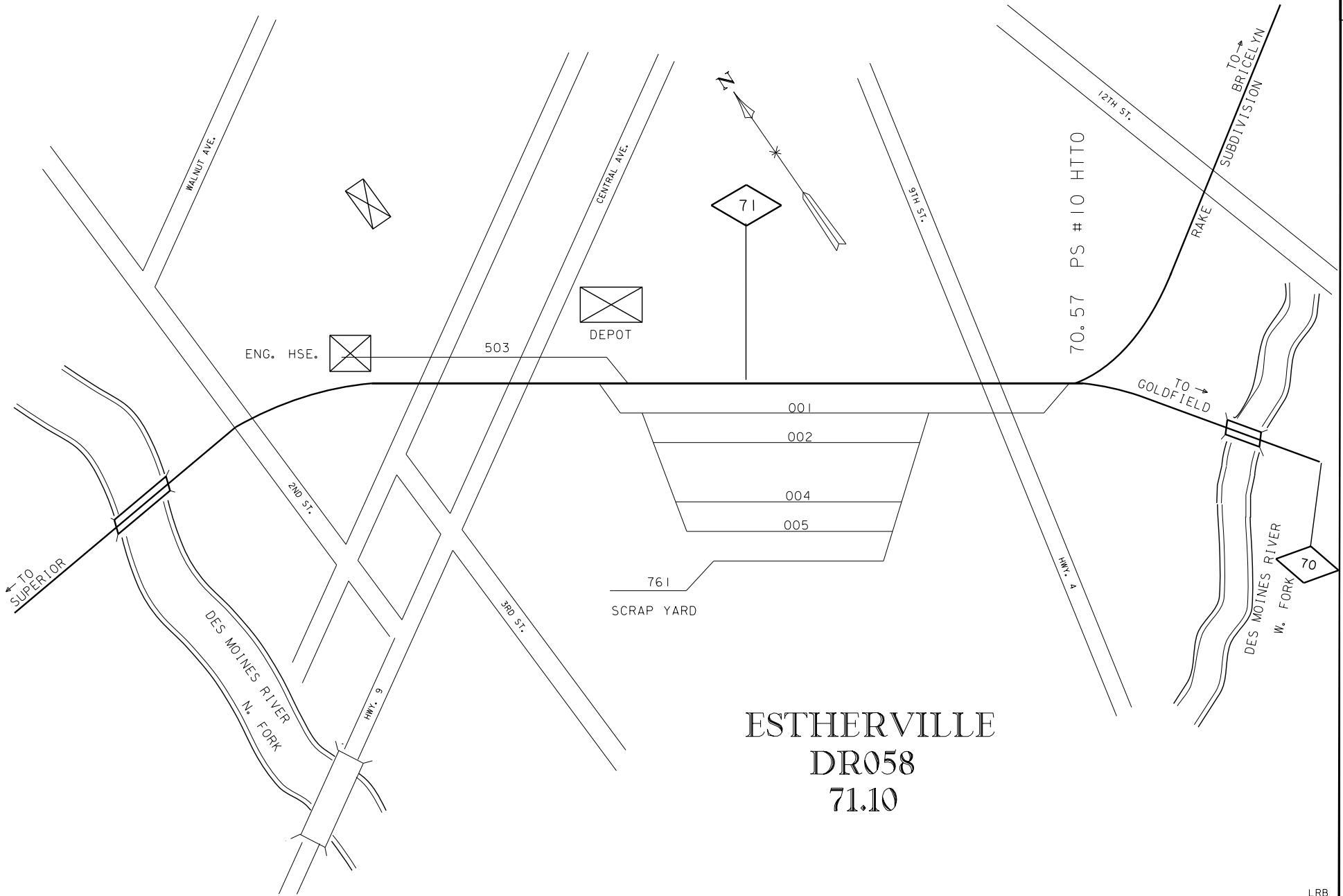
CONSTRUCTED BY ROCK ISLAND LINES-1882 ACQUIRED BY C&NW RY-JUNE 1983
 C&NW RY MERGED INTO UPRR BY ICC FINANCE DOCKET #32133 EFFECTIVE-APRIL 6, 1995
 ** CONSTRUCTED BY CHICAGO, ROCK ISLAND, CEDAR RAPIDS, IOWA FALLS, AND NORTHWESTERN RY CO. - 1881 AND ACQUIRED BY C&NW RY - JUNE 1983
 * ABANDONED ESTHERVILLE TO TERRILL (DOC #24621) 14.23 MILES EFFECTIVE MARCH 1, 1968 (FORMER MINNEAPOLIS & ST LOUIS RR)

75

70



SPEED	20		30	
CURVE	1° 0' 00" 5° 45' 00" 2-1 1/2"	3° 0' 00" 21° 0' 00" 8"	3° 0' 00" 30° 31' 00" 4-3 3/4"	2° 0' 00" 28° 0' 00" 0"
RAIL	2° 30' 00" 10° 8' 00" 4-3 3/4"	7° 3' 67" 128° 22' 63" 4-1 7/4" 6FLM	2° 0' 00" 26° 53' 00" 1-1 1/2"	5° 0' 00" 54° 0' 00" 2-3 3/4"
SIMN	90	90	1987	SH 112 SH 90 SH 112
TIES	1987	1987	1970	1987 1970 1987
SURF/LINE	1987	1988	1987	1988 1987



ESTHERVILLE
 DR058
 71.10

CONSTRUCTED BY CHICAGO, ROCK ISLAND, CEDAR RAPIDS, IOWA FALLS, AND NORTHWESTERN RY CO. - 1881 AND ACQUIRED BY C&NW RY - JUNE 1983
 C&NW RY MERGED INTO UPRR BY ICC FINANCE DOCKET #32133 EFFECTIVE-APRIL 6, 1995

4

70

65

TO
RAKE
69.83 875974A S
69.80 875975G S

69.46 922507S S
69.34 875976N S
69.16 DETECTOR READER
69.11 875977V S

68.99 875978C S

68.66 875979J XY
68.49 (1)CBC 8'x3'

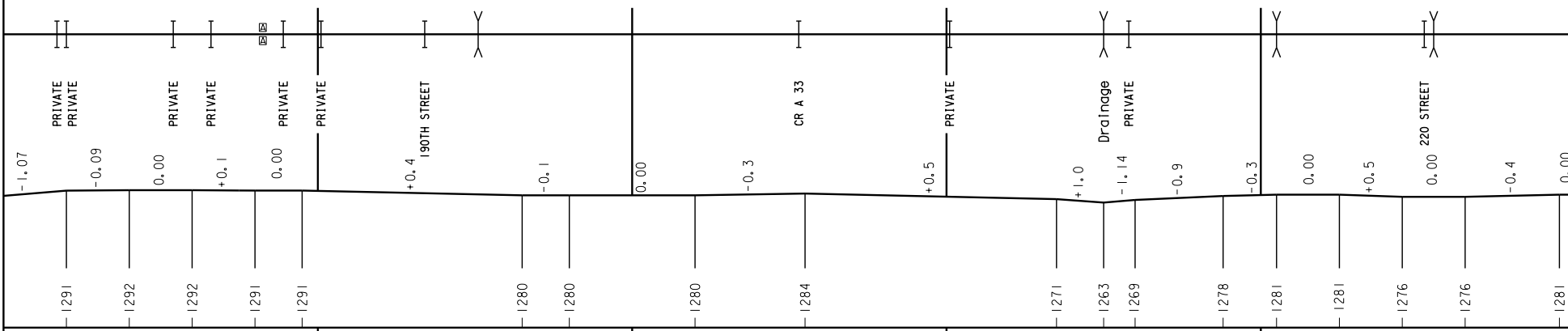
67.47 875980D XY

66.99 875981K S

66.50 (1)DPG00-60 [SIMN]
66.42 875982S S

65.95 (1)SAC 6'x8'

65.48 875983Y XY
65.45 (1)CMP 4'

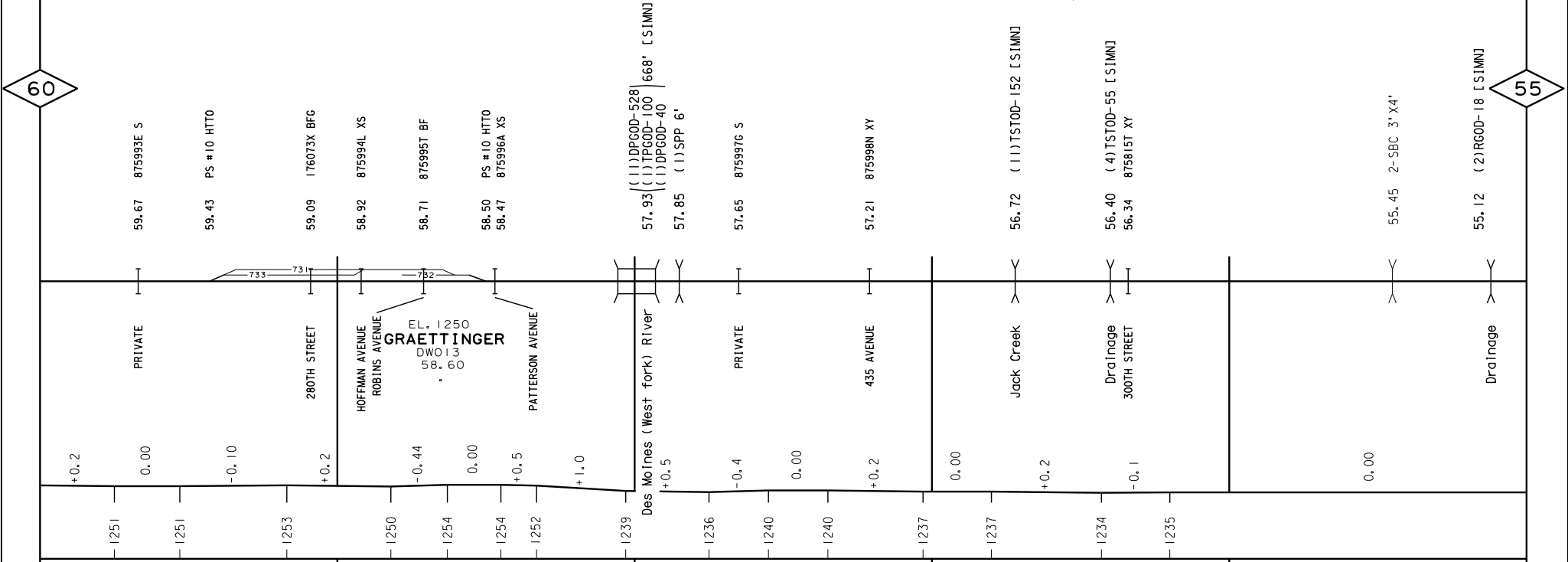


SPEED		30		
CURVE	2° 0' 00" 28° 0' 00" 3-1/4"	2° 40' 00" 28° 0' 00" 2-1/4"	2° 0' 00" 35° 4' 00" 2-1/4"	16° 0' 00" 15° 0' 00" 3-1/2"
RAIL				
SIMN	SH 112	1987	90	
TIES		1987		
SURF/LTNE	1987	1988	1987	1988

CONSTRUCTED BY CHICAGO, ROCK ISLAND, CEDAR RAPIDS, IOWA FALLS AND NORTHWESTERN RY CO. - 1881 AND ACQUIRED BY C&NW RY - JUNE 1983
 C&NW RY MERGED INTO UPRR BY ICC FINANCE DOCKET #32133 EFFECTIVE-APRIL 6, 1995

60

55



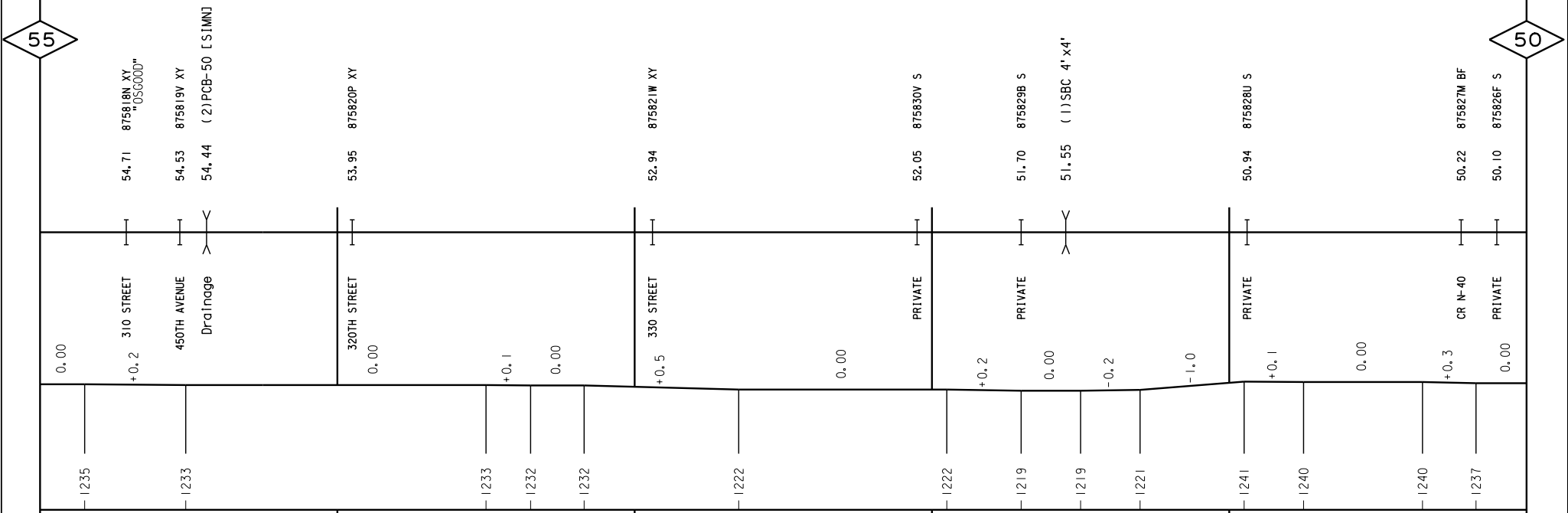
SPEED			30		
CURVE	1° 0' 00" 7° 0' 00" 3-1/2"	4° 0' 00" 37° 22' 00" 3-17/2"	3° 0' 00" 18° 48' 00" 4"	2° 0' 00" 10° 8' 00" 3-17/4"	
RAIL					
SIMN	90 90	SH 112	1987	90	1987
TIES		1987	1970	1987	1987
SURF/LTNE			1987		1988 1987

← CONSTRUCTED BY CHICAGO, ROCK ISLAND, CEDAR RAPIDS, IOWA FALLS AND NORTHWESTERN RY CO. - 1881 AND ACQUIRED BY C&NW RY - JUNE 1983 →
 ← C&NW RY MERGED INTO UPRR BY ICC FINANCE DOCKET #32133 EFFECTIVE-APRIL 6, 1995 →

7

55

50

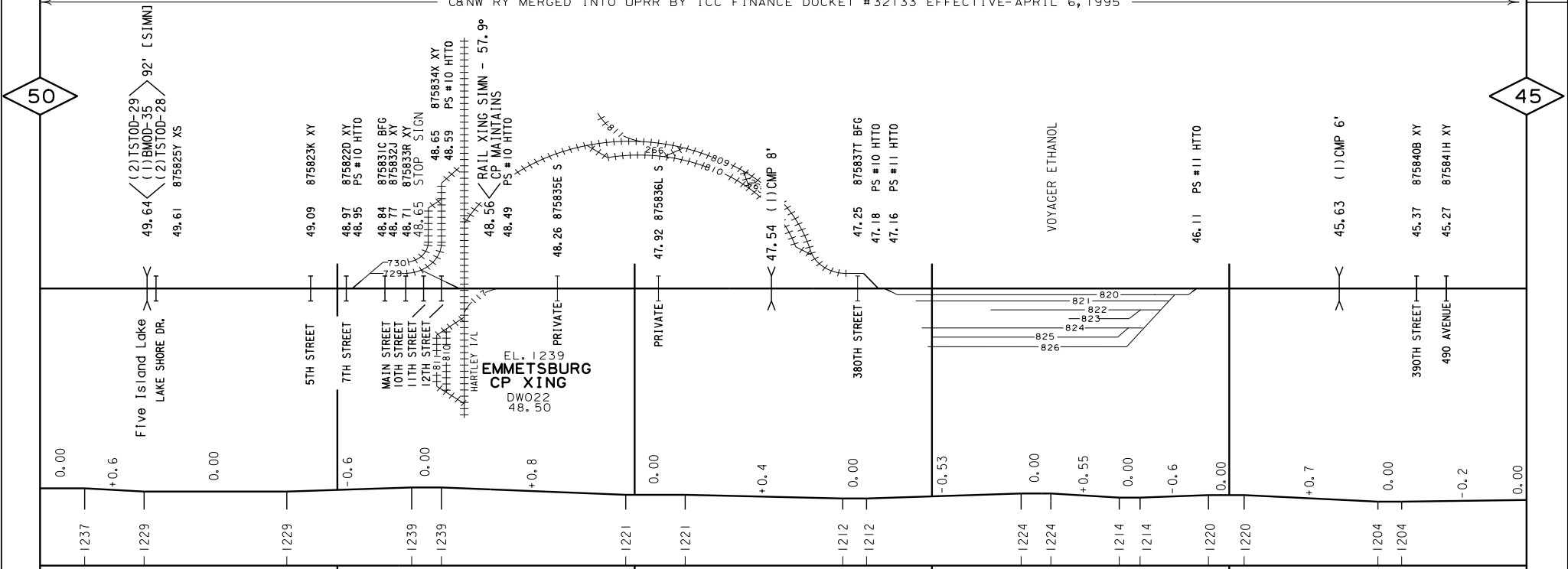


SPEED			30					
CURVE							$1^{\circ}0'00''$ $12^{\circ}25'00''$ $1-374''$	
RAIL								
SIMN							SH 90 1985 SH 90 1985	
TIES							1987	
SURF/LTNE							1987	

CONSTRUCTED BY CHICAGO, ROCK ISLAND, CEDAR RAPIDS, IOWA FALLS AND NORTHWESTERN RY CO. - 1881 AND ACQUIRED BY C&NW RY - JUNE 1983
 C&NW RY MERGED INTO UPRR BY ICC FINANCE DOCKET # 32133 EFFECTIVE-APRIL 6, 1995

50

45



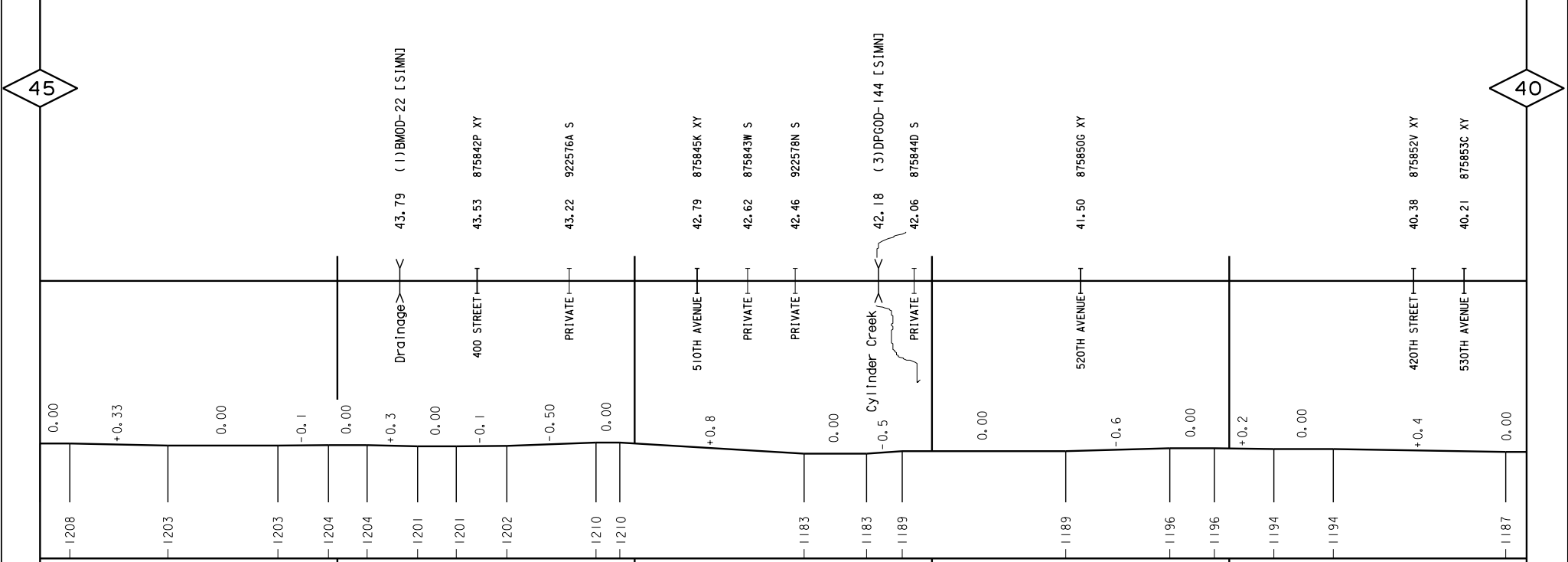
SPEED	30	20	30	
CURVE	4° 0.00' / 42° 10.00' / 3-3/4"	3° 26.99' / 18° 27.85' / 2-1/2"	1° 21.00' / 7° 47.61' / 0-3/4"	6° 0.00' / 1° 26.00' / 1-1/4"
RAIL				0° 20.00' / 4° 18.00' / 2-1/2"
SIMN	SH 90 / 1985	SH 115	SH 112 / 1985	SH 90 / 1984
TIES	1987 2006	1987	2003	2003
SURF/LINE	1987		2003	

CONSTRUCTED BY CHICAGO, ROCK ISLAND, CEDAR RAPIDS, IOWA FALLS AND NORTHWESTERN RY CO. - 1881 AND ACQUIRED BY C&NW RY - JUNE 1983
 C&NW RY MERGED INTO UPRR BY ICC FINANCE DOCKET # 32133 EFFECTIVE-APRIL 6, 1995

9

45

40



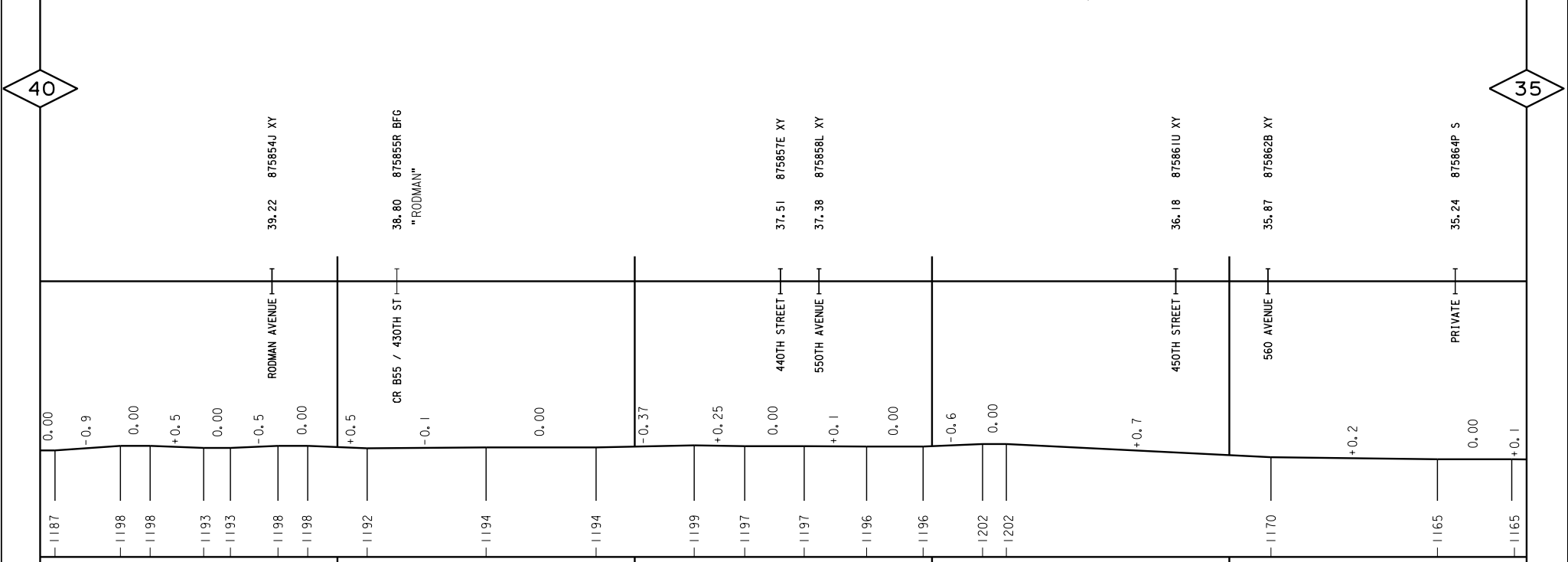
Category	Value
SPEED	30
CURVE	1° 00.00' 3 3/4" 30.00' 3-1/2"
RAIL	
S1MN	SH 90 1984 SH 90 1984
TIES	2003
SURF/LINE	2003

CONSTRUCTED BY CHICAGO, ROCK ISLAND, CEDAR RAPIDS, IOWA FALLS AND NORTHWESTERN RY CO. - 1881 AND ACQUIRED BY C&NW RY - JUNE 1983
 C&NW RAILWAY MERGED INTO UPRR BY ICC FINANCE DOCKET #32133 EFFECTIVE APRIL 6, 1995

10

40

35

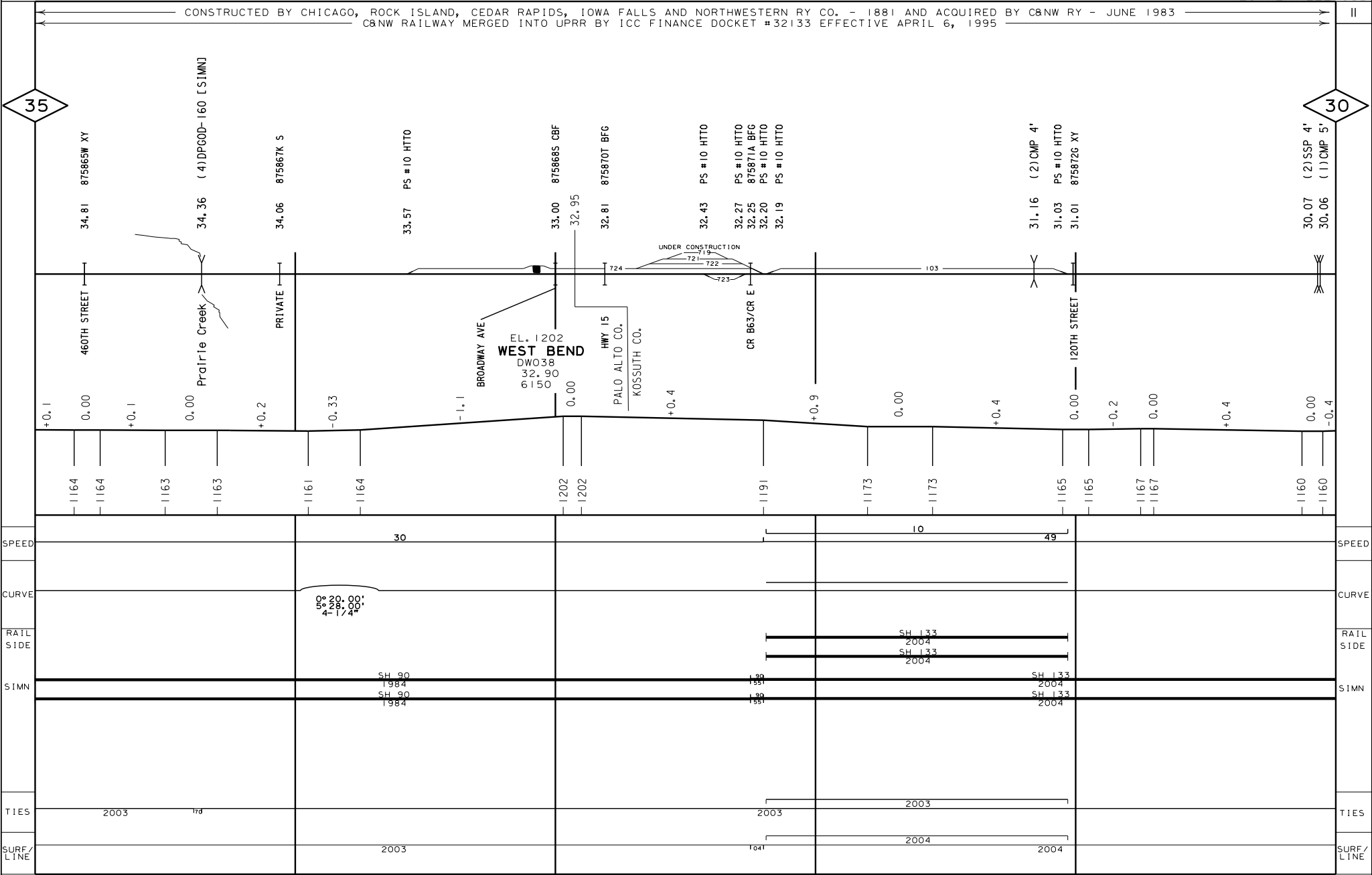


SPEED	CURVE	RAIL	SIMN	TIES	SURF/LINE
30	0° 39.42' 1° 20.78' 4-1/2"		SH 90 1984 SH 90 1984	2003	2003
	0° 30.00' 3° 01.00' 4-1/2"			2003	2003

CONSTRUCTED BY CHICAGO, ROCK ISLAND, CEDAR RAPIDS, IOWA FALLS AND NORTHWESTERN RY CO. - 1881 AND ACQUIRED BY C&NW RY - JUNE 1983
 C&NW RAILWAY MERGED INTO UPRR BY ICC FINANCE DOCKET #32133 EFFECTIVE APRIL 6, 1995

35

30



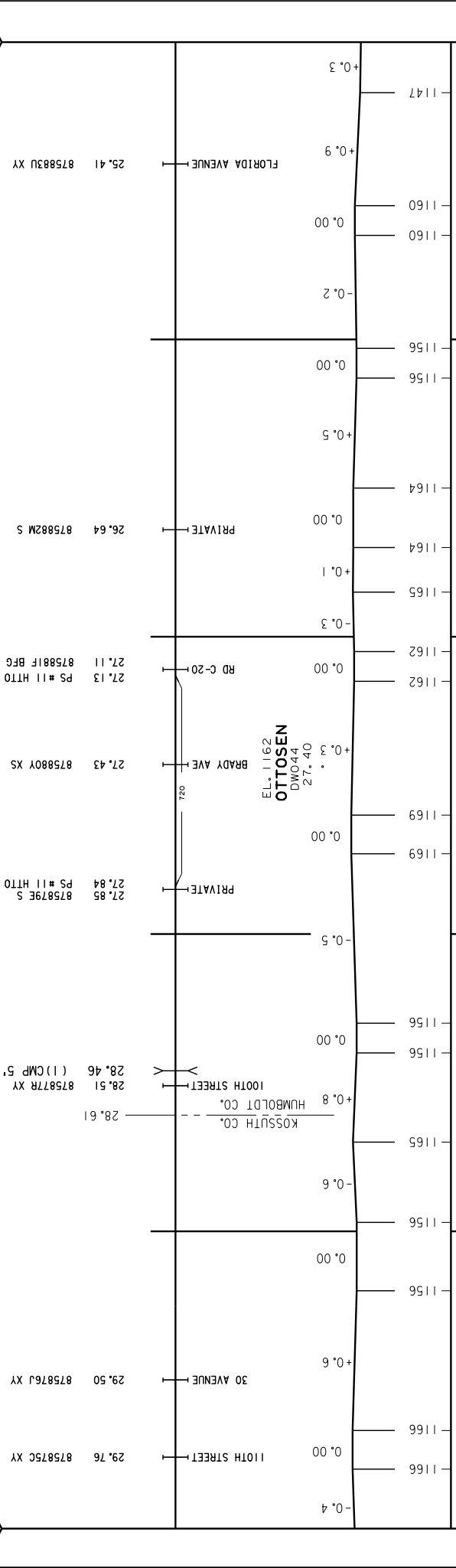
SPEED		30		10	49	
CURVE		50° 20' 00"	4-28' 00"	174'		
RAIL SIDE				SH 133 2004	SH 133 2004	
SIMN		SH 90 1984	SH 90 1984	SH 133 2004	SH 133 2004	
TIES		2003	174	2003	2003	
SURF/LTNE		2003		1841	2004	2004

ESTHERVILLE SUB

CONSTRUCTED BY CHICAGO, ROCK ISLAND, CEDAR RAPIDS, IOWA FALLS AND NORTHWESTERN RY CO. - 1881 AND ACQUIRED BY C&NW RY - JUNE 1983
 C&NW RAILWAY MERGED INTO UPRR BY ICC FINANCE DOCKET #32133 EFFECTIVE APRIL 6, 1995

25

30

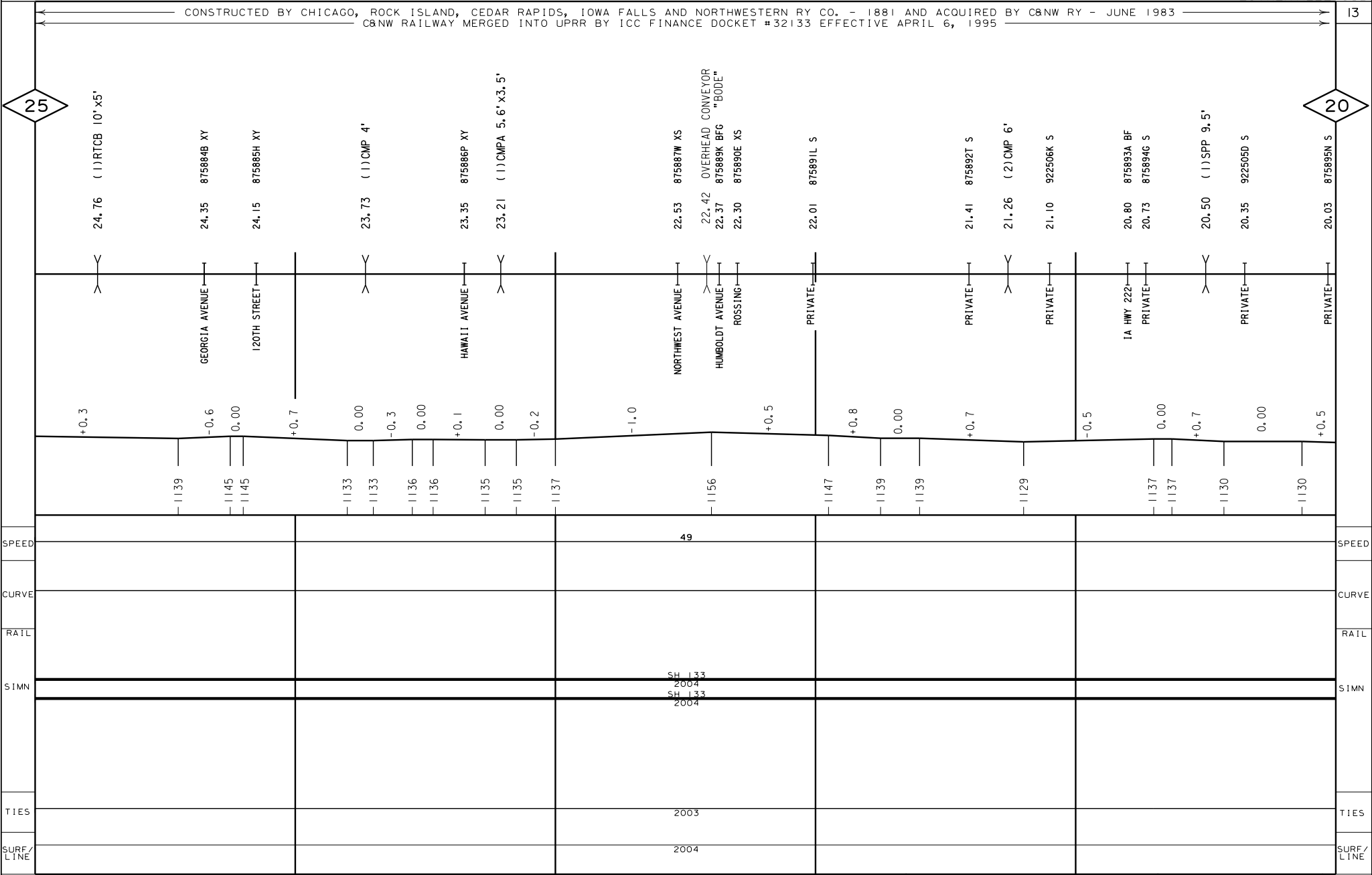


SPEED	CURVE	RATL	S1MN	TIES	SURF/LINE
49	36° 00' 00" 56° 00' 00" 2° 17' 20"		SH 1133 SH 1033 SH 1033 2003	2003	2004

CONSTRUCTED BY CHICAGO, ROCK ISLAND, CEDAR RAPIDS, IOWA FALLS AND NORTHWESTERN RY CO. - 1881 AND ACQUIRED BY C&NW RY - JUNE 1983
 C&NW RAILWAY MERGED INTO UPRR BY ICC FINANCE DOCKET #32133 EFFECTIVE APRIL 6, 1995

25

20



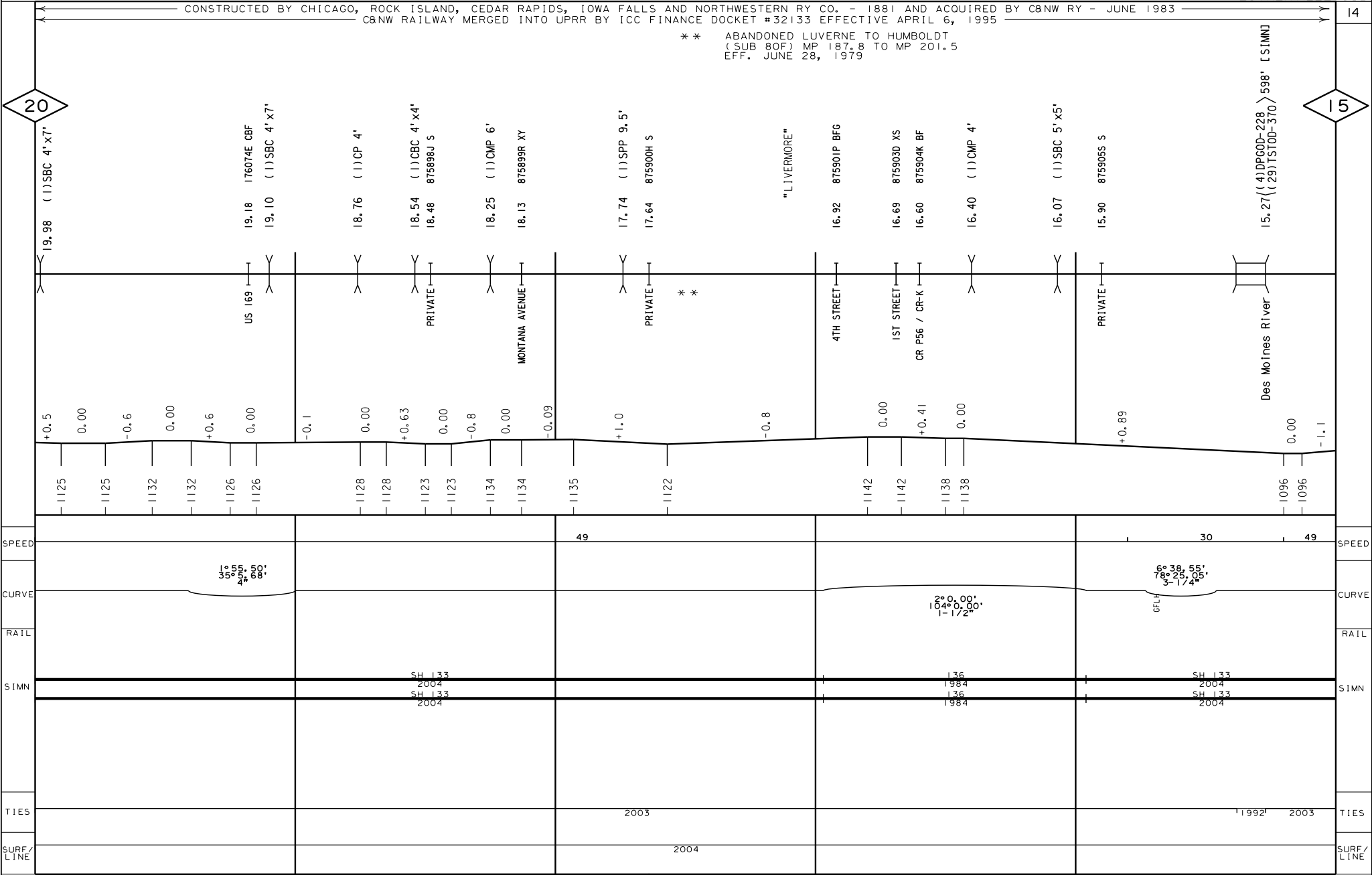
SPEED	49	SPEED
CURVE		CURVE
RAIL		RAIL
SIMN	SH 133 2004 SH 133 2004	SIMN
TIES	2003	TIES
SURF/LTNE	2004	SURF/LTNE

CONSTRUCTED BY CHICAGO, ROCK ISLAND, CEDAR RAPIDS, IOWA FALLS AND NORTHWESTERN RY CO. - 1881 AND ACQUIRED BY C&NW RY - JUNE 1983
 C&NW RAILWAY MERGED INTO UPRR BY ICC FINANCE DOCKET #32133 EFFECTIVE APRIL 6, 1995

** ABANDONED LUVERNE TO HUMBOLDT
 (SUB 80F) MP 187.8 TO MP 201.5
 EFF. JUNE 28, 1979

20

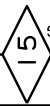
15



ESTHERVILLE SUB

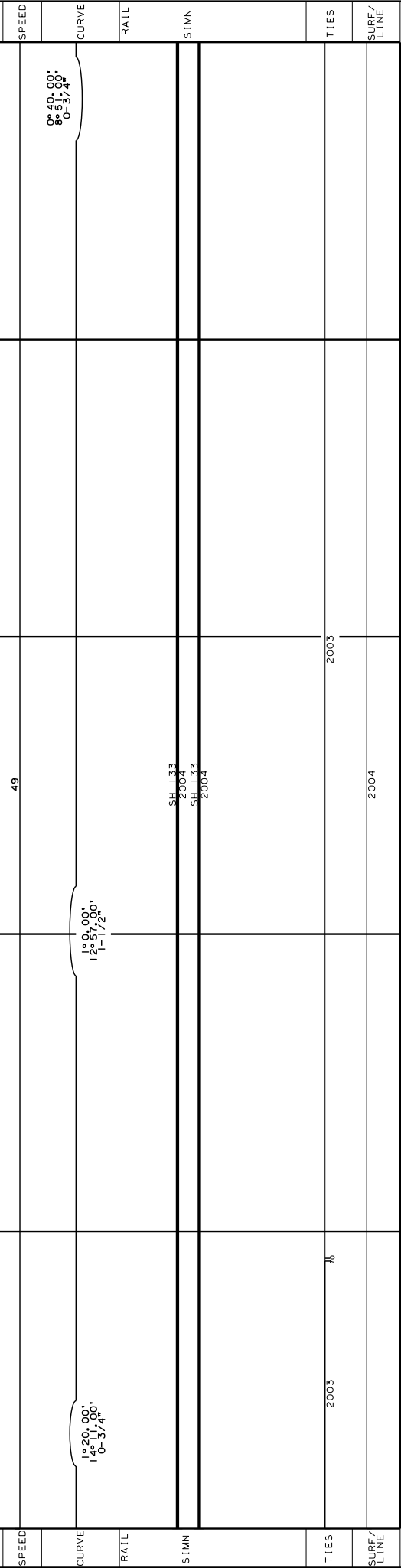
CONSTRUCTED BY CHICAGO, ROCK ISLAND, CEDAR RAPIDS, IOWA FALLS AND NORTHWESTERN RY CO. - 1881 AND ACQUIRED BY C&NW RY - JUNE, 1983
 C&NW RAILWAY MERGED INTO UPRR BY ICC FINANCE DOCKET #32133 EFFECTIVE APRIL 6, 1995

15



(2) TSTD-27
 (1) BMD-22
 (2) TSTD-28
 78' [S1MN]

STATION	DESCRIPTION	ELEVATION	ADJUSTMENT	DATE
14.94	PINE AVENUE	875906Y	CBFG	
14.44	PENN AVENUE	875908M	XY	
14.28	140TH STREET	875909U	XY	
14.09	Drainage			
13.42	PRIVATE	875911V	S	
12.19	150TH STREET	875912C	XY	
11.89	QUEEN AVENUE	875913J	XY	
11.59	PRIVATE	875914R	S	
11.21	155TH STREET	875915X	XY	
10.97	STATES AVENUE	875916E	XY	
10.34	160TH/CR-C28	875917L	XY	



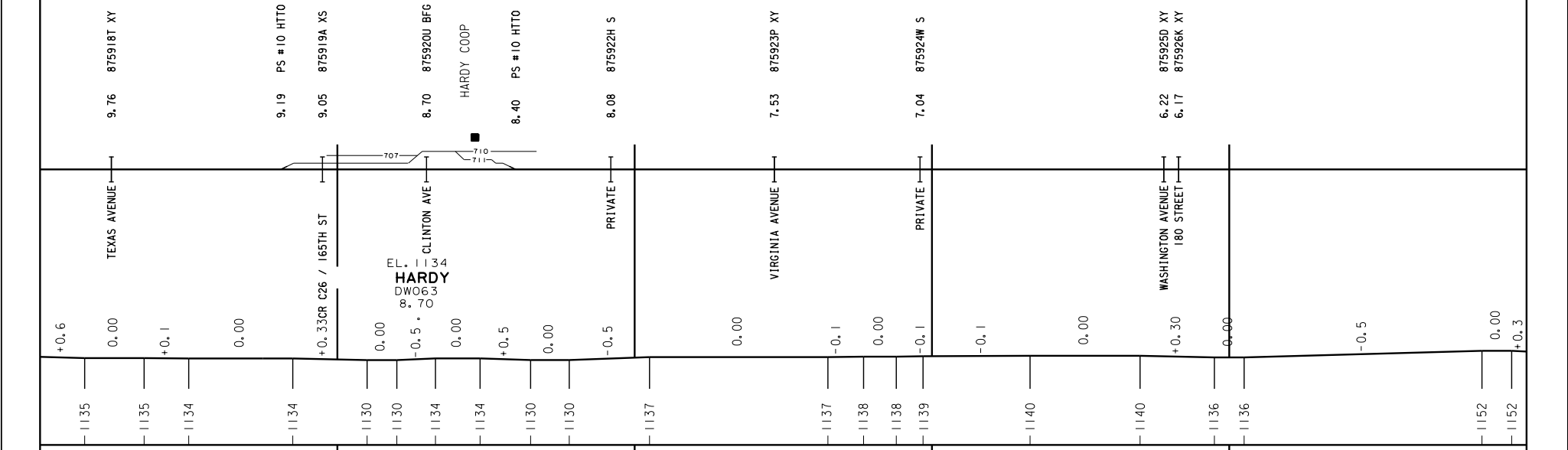
TIES	SURF/LINE
2003	
2004	
2003	

CONSTRUCTED BY CHICAGO, ROCK ISLAND, CEDAR RAPIDS, IOWA FALLS AND NORTHWESTERN RY CO. - 1881 AND ACQUIRED BY C&NW RY - JUNE 1983
 C&NW RAILWAY MERGED INTO UPRR BY ICC FINANCE DOCKET #32133 EFFECTIVE APRIL 6, 1995

16

10

5



SPEED 49

CURVE 0° 40.00' / 8° 0.00' / 0-3/4"

RAIL 2° 0.00' / 21° 39.00' / 3-3/4"

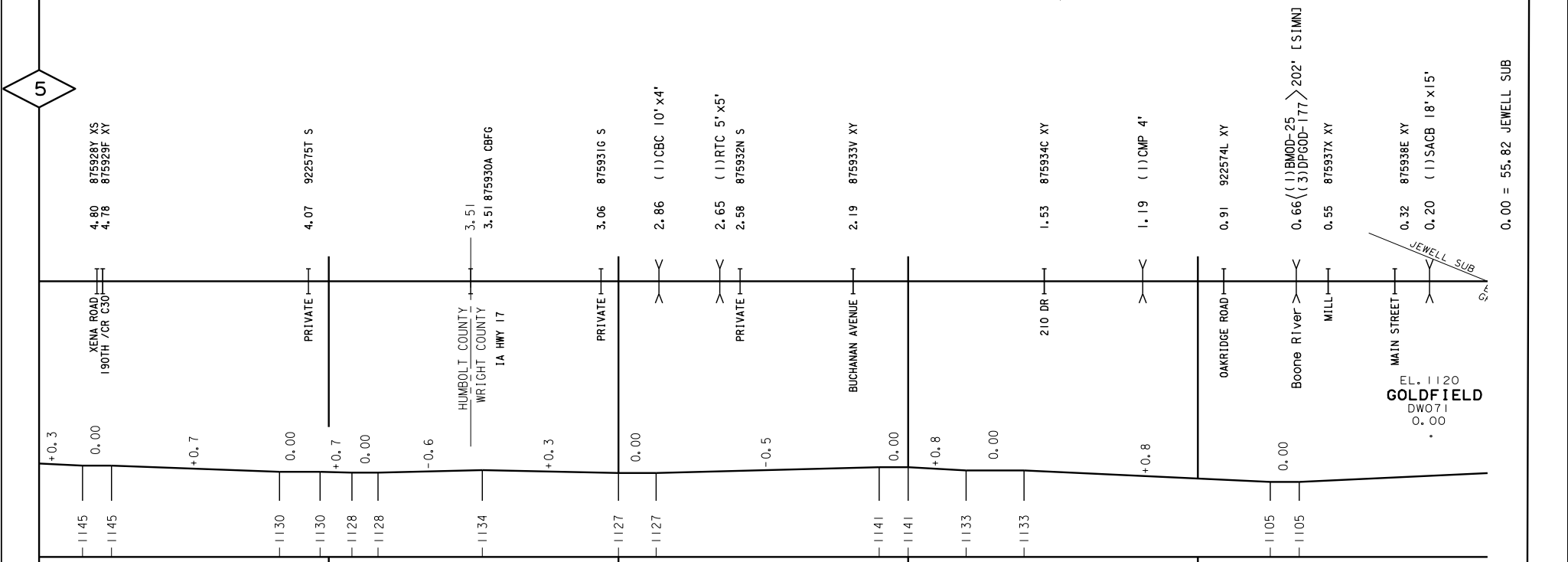
SIMN SH 115 1986

TIES 2003

SURF/LINE 2004

CONSTRUCTED BY CHICAGO, ROCK ISLAND, CEDAR RAPIDS, IOWA FALLS AND NORTHWESTERN RY CO. - 1881 AND ACQUIRED BY C&N W RY - JUNE 1983
 C&N W RAILWAY MERGED INTO UPRR BY ICC FINANCE DOCKET #32133 EFFECTIVE APRIL 6, 1995

5



SPEED		49		10
CURVE			$2^{\circ} 20' 00''$ $45^{\circ} 39' 00''$ $0-3/4'$	$2^{\circ} 00' 00''$ $14^{\circ} 36' 00''$
RAIL			$3^{\circ} 00' 00''$ $18^{\circ} 14' 00''$	$12^{\circ} 00' 00''$ $79^{\circ} 42' 58''$ CULVERT
SIMN		SH 115 1986	115 1985	136 2011
TIES			2003	1997 2003
SURF/LTNE			2003	

0.00 = 55.82 JEWELL SUB

EL. 1120
GOLD FIELD
 DW071
 0.00

240

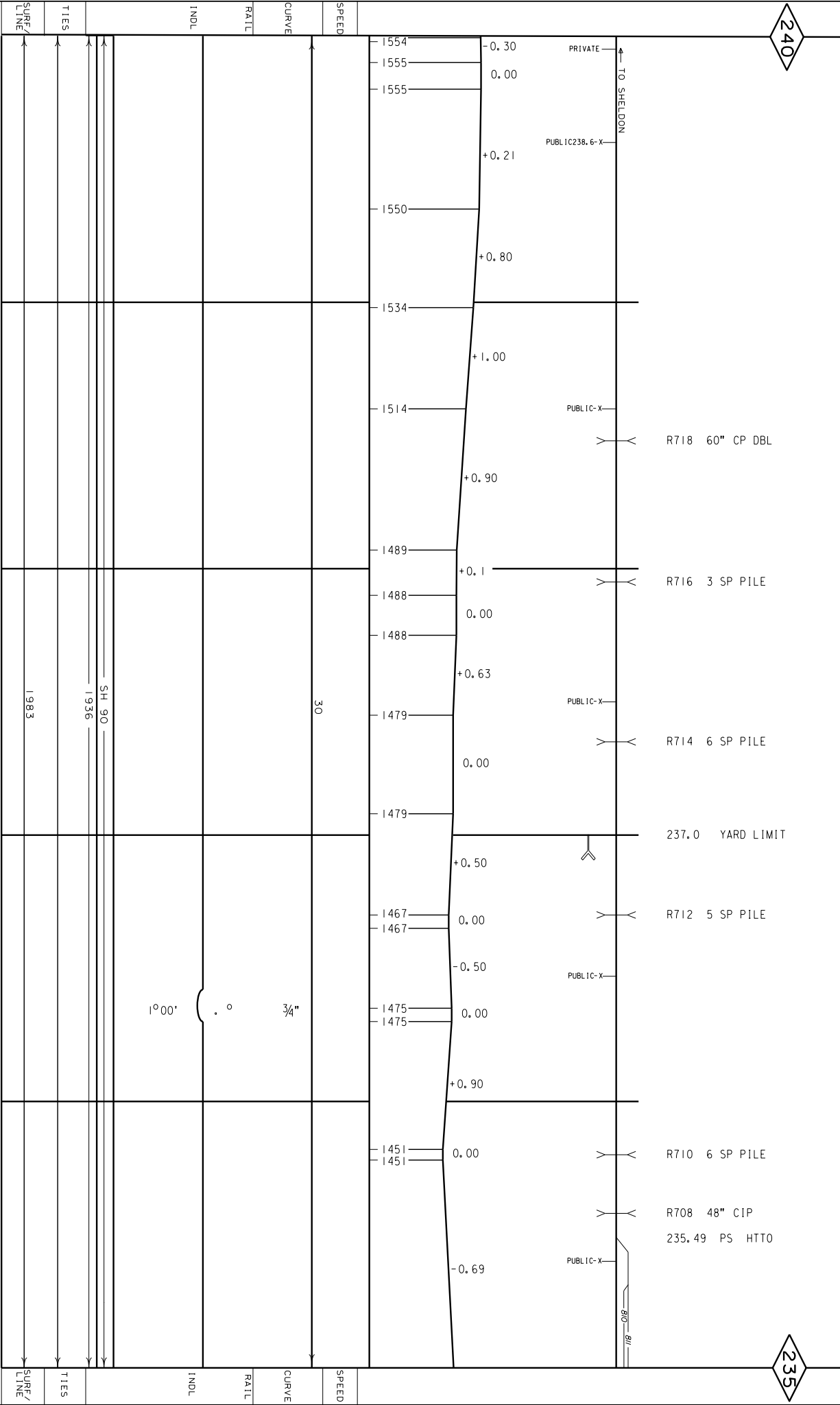
235

CONSTRUCTED BY MILWAUKEE ROAD - DATE UNKNOWN
SOLD TO CP RAIL-1985
CP RAIL SOLD TO IMRL-1997

UP HAS TRACK RIGHTS PER AGREE 11-19-1974

HARTLEY IND LD - ESTHERVILLE SUB

18



INDL

CURVE

RATL

SPEED

TIES

SURF/LINE

1983

SH 90

1936

30

1°00'

3/4"

TO SHELDON

PRIVATE

PUBLIC 238.6-X

PUBLIC-X

R718 60" CP DBL

R716 3 SP PILE

R714 6 SP PILE

237.0 YARD LIMIT

R712 5 SP PILE

PUBLIC-X

R710 6 SP PILE

R708 48" CIP

235.49 PS HTTO

90-111

CONSTRUCTED BY MILWAUKEE ROAD - DATE UNKNOWN

SOLD TO CP RAIL-1985

CP RAIL SOLD TO IMRL-1997

UP HAS TRACK RIGHTS PER AGREE 11-19-1974

HARTLEY IND LD - ESTHERVILLE SUB

18

240

235

Last Updated: 09/02/2014

p:\lowd\pages\estherville sub\Pages\ESTHERVILLE SUB\09\ESTHERVILLE SUB-09-Pages.dgn

CONSTRUCTED BY MILWAUKEE ROAD - DATE UNKNOWN
 UP HAS TRACKAGE RIGHTS PER AGREEMENT NOVEMBER 19, 1974
 SOLD TO CP RAIL-1985
 CP RAIL SOLD TO IMRL -1997

235

230

234.51 PS# HTTO

233.0 YARD LIMIT
 R704 DBL 14' X8' MAS CUL

R475 36" CIP, 48" CIP

R475 2 SP PILE

R702 8 SP PILE

R700 9 SP PILE

CTH 'X'-'X'
 EL. 1461
HARTLEY
 DZ041
 234.3

SECOND ST-X
 FIRST ST-X

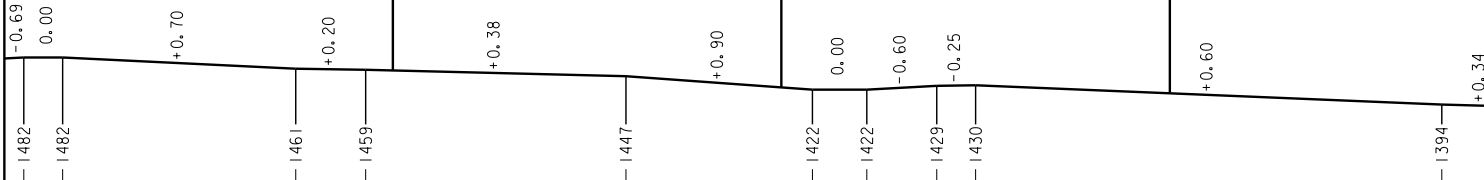
WILBER ST

PUBLIC-X

PUBLIC-X

PUBLIC-X

PUBLIC-X



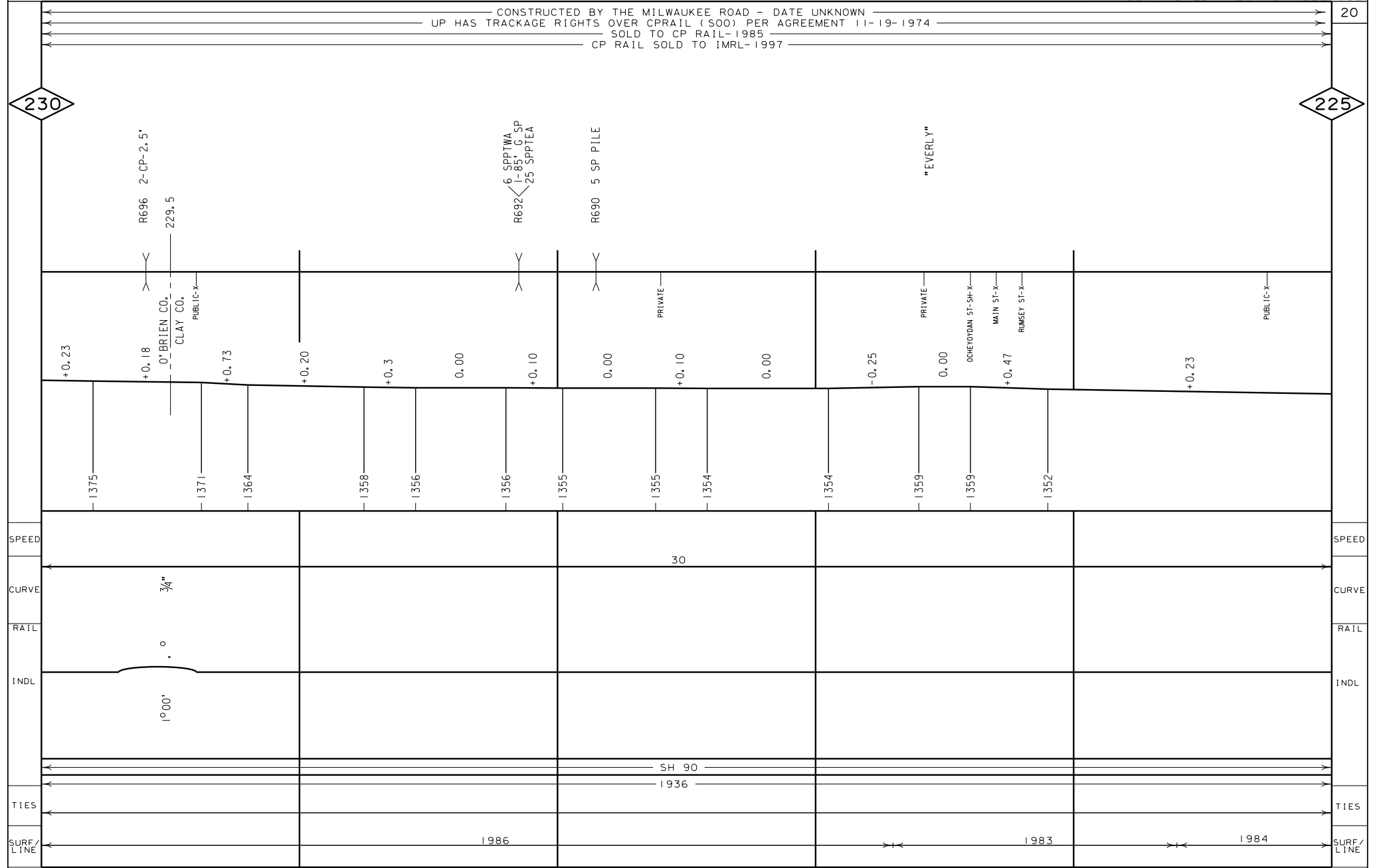
SPEED						
CURVE			30			
RAIL					3/4"	
INDL					1° 00'	
TIES			SH 90 1936			
SURF/LTNE		1983			1986	

CONSTRUCTED BY THE MILWAUKEE ROAD - DATE UNKNOWN
 UP HAS TRACKAGE RIGHTS OVER CPRAIL (SOO) PER AGREEMENT 11-19-1974
 SOLD TO CP RAIL-1985
 CP RAIL SOLD TO IMRL-1997

20

230

225



CONSTRUCTED BY THE MILWAUKEE ROAD - DATE UNKNOWN
 UP HAS TRACKAGE RIGHTS OVER CPRAIL (500) PER AGREEMENT 11-19-1974
 SOLD TO CP RAIL-1985
 CP RAIL SOLD TO IMRL-1997

21

225

220

	+0.23	0.00	+0.08	0.00	+0.23	0.00	-0.16	0.00	+0.10	0.00	+0.2
	1338	1338	1335	1335	1331	1331	1334	1334	1331	1331	1331
SPEED						30					
CURVE						1/2"					
RAIL						0					
INDL						0°30'					
TIES						SH 90					
						1936					
SURF/LTNE						1984					1983

T678 6 DP P I L B D

R676 12 SP P I L E

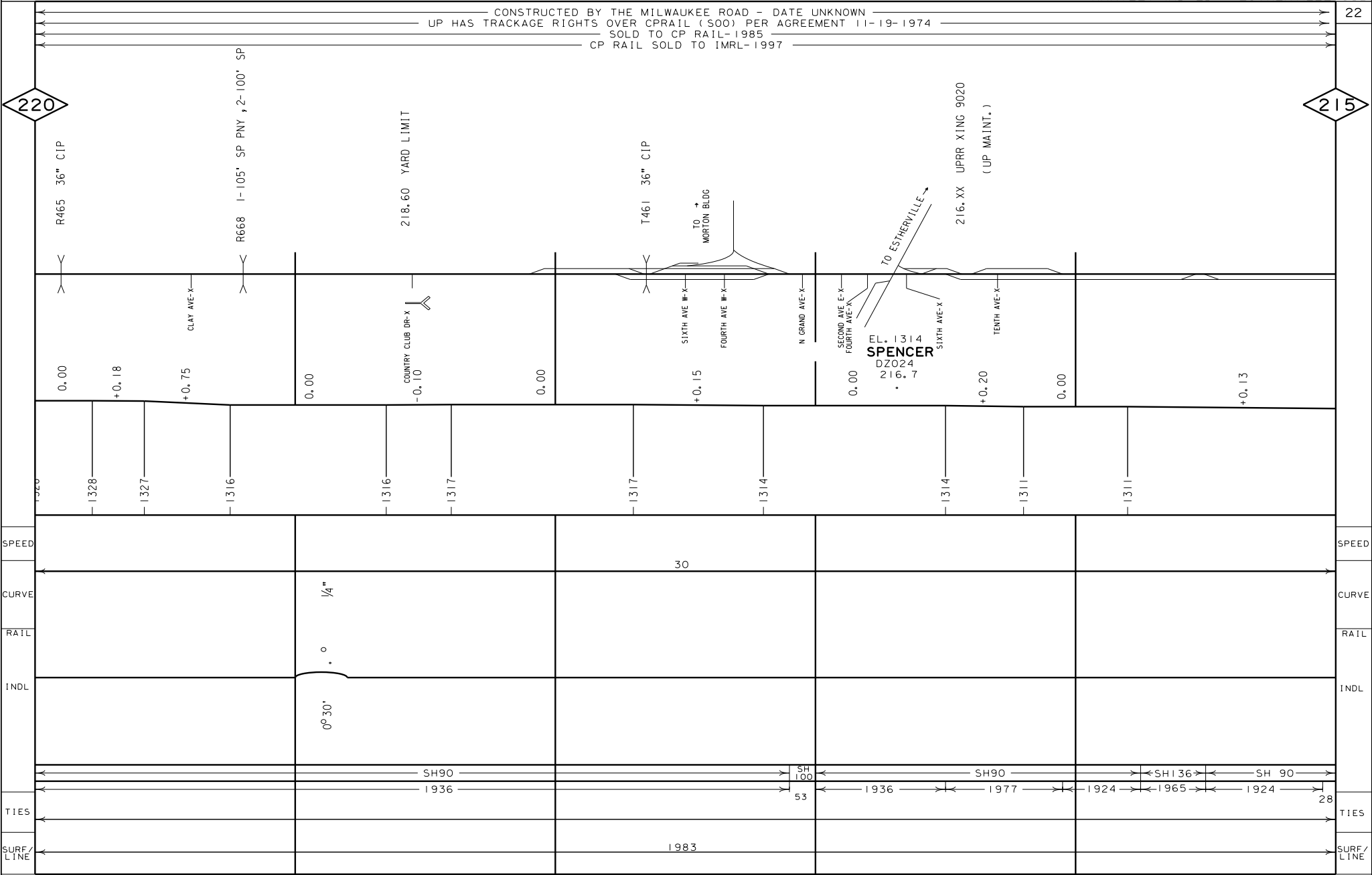
R672 36" C I P

PUBLIC-C-X

PRIVATE

PUBLIC-C-X

PUBLIC-C-X



CONSTRUCTED BY THE MILWAUKEE ROAD - DATE UNKNOWN
 UP HAS TRACKAGE RIGHTS OVER CPRAIL (SOO) PER AGREEMENT 11-19-1974
 SOLD TO CP RAIL-1985
 CP RAIL SOLD TO IMRL-1997

220

215

SPEED			30											
CURVE			1/4"											
RAIL			0											
INDL			0° 30'											
TIES		SH90	1936	SH100	53	1936	SH90	1977	1924	SH136	1965	SH 90	1924	
SURF/LINE					1983									

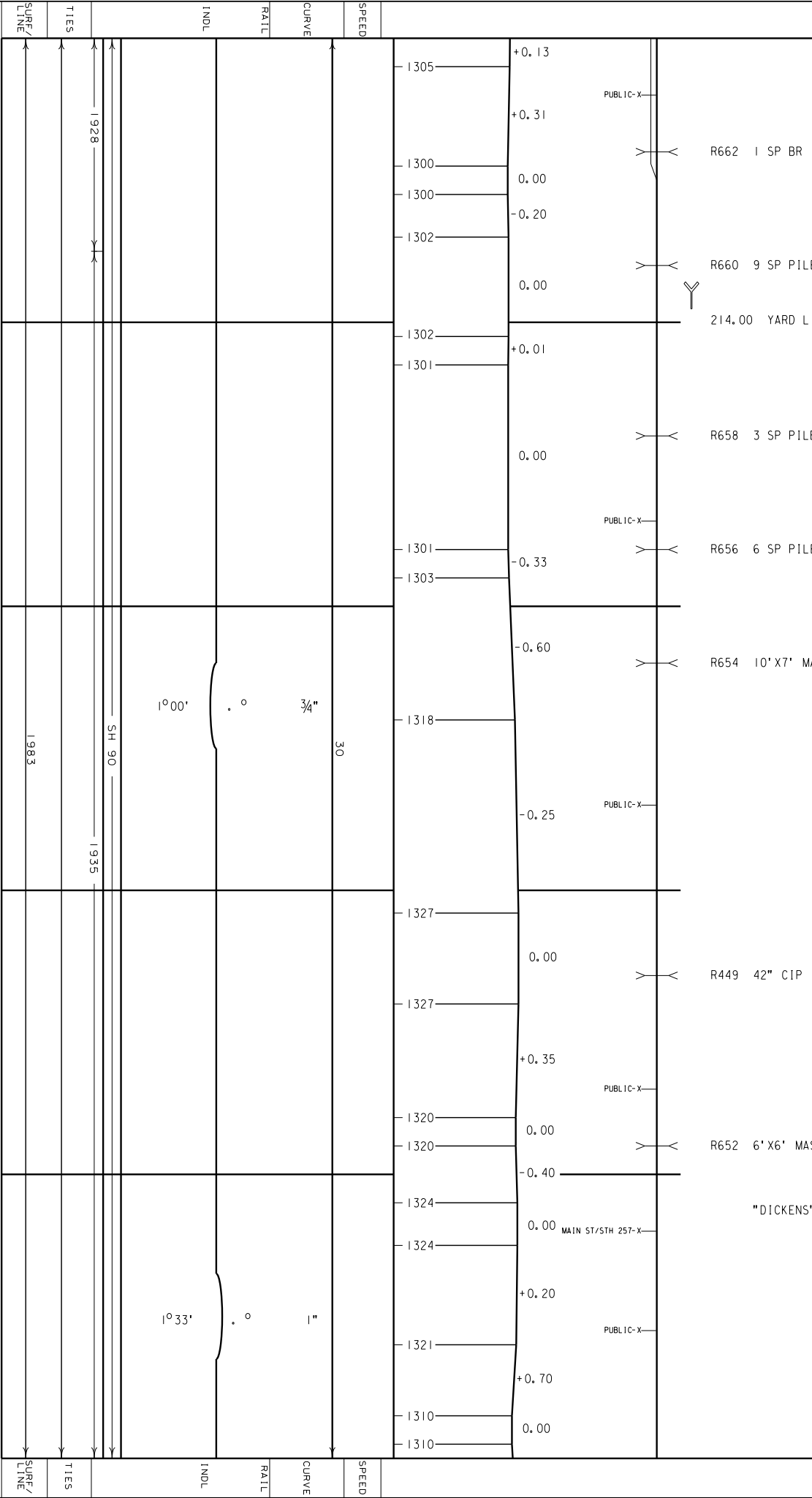
HARTLEY IND LD - ESTHERVILLE SUB

23

UP HAS TRACKAGE RIGHTS OVER CPRAIL (SOO) PER AGREEMENT 11-19-1974
 CP RAIL SOLD TO IMRL-1985
 CP RAIL SOLD TO IMRL-1997

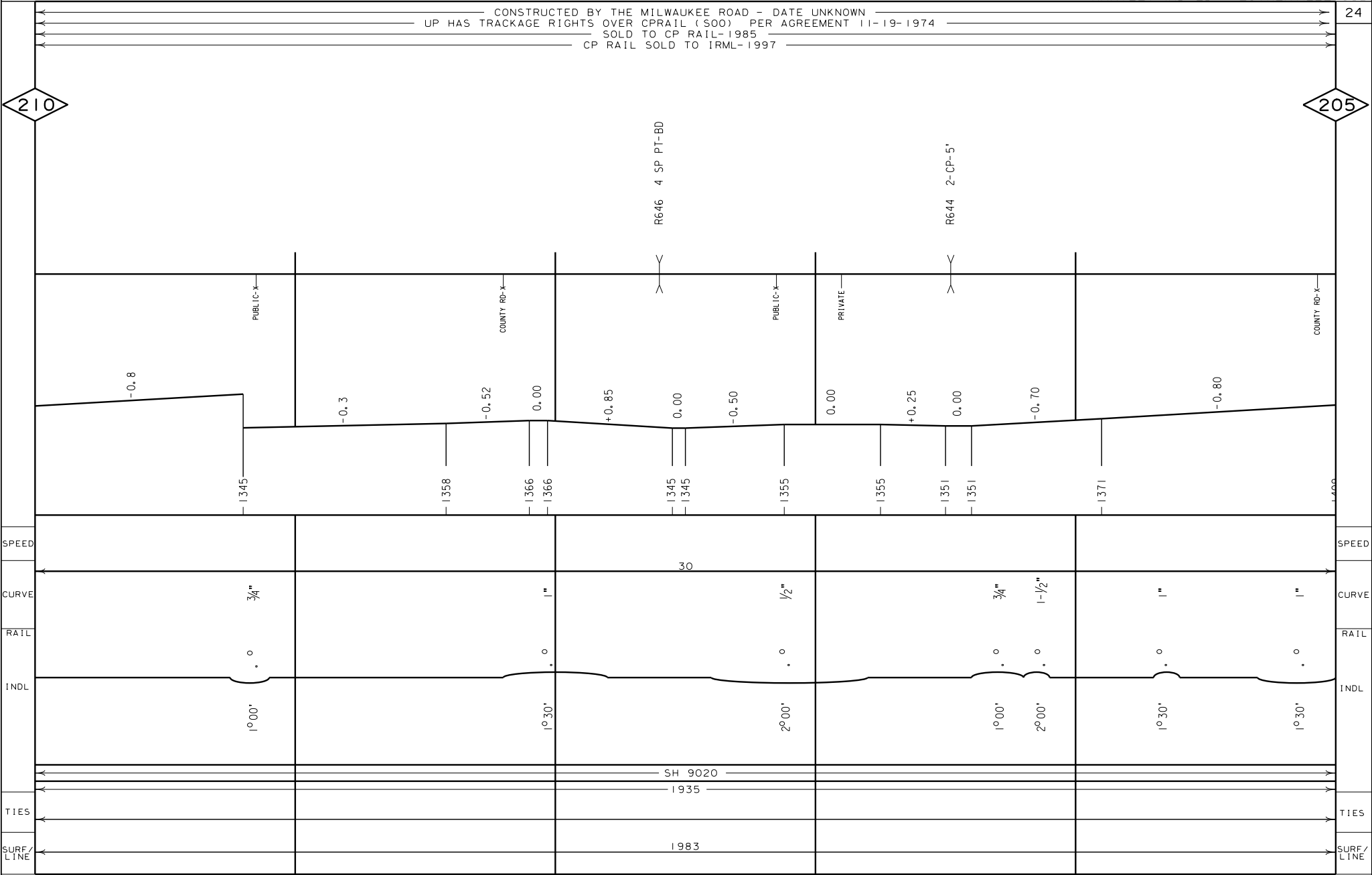
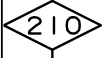
215

210



Last Updated: 09/02/2014
 p:\11lowd\pages\estherville sub\Pages\ESTHERVILLE SUB\09\ESTHERVILLE SUB-09-Pages.dgn

CONSTRUCTED BY THE MILWAUKEE ROAD - DATE UNKNOWN
 UP HAS TRACKAGE RIGHTS OVER CPRAIL (SOO) PER AGREEMENT 11-19-1974
 SOLD TO CP RAIL-1985
 CP RAIL SOLD TO IRML-1997

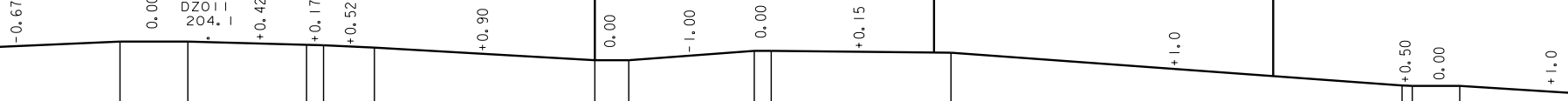
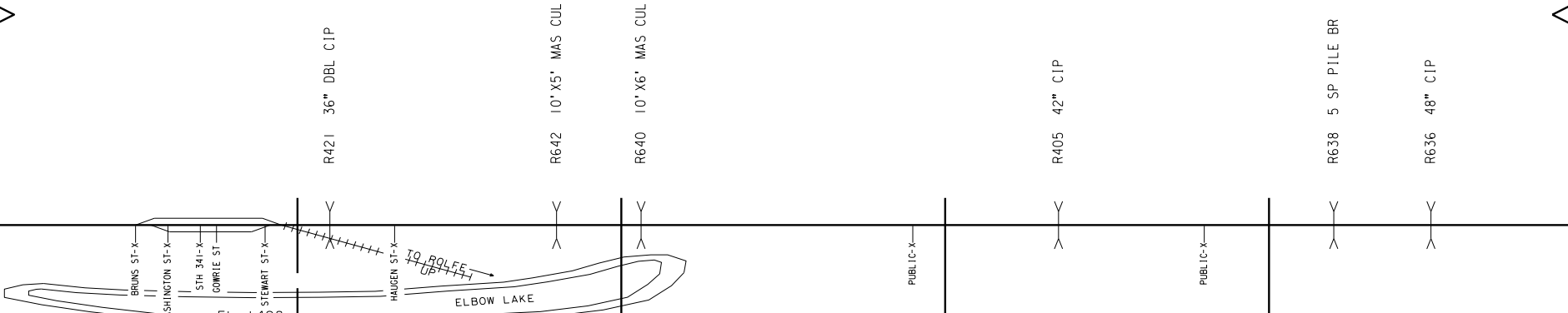


CONSTRUCTED BY THE MILWAUKEE ROAD - DATE UNKNOWN
UP HAS TRACKAGE RIGHTS OVER CPRAIL (S00) PER AGREEMENT 11-19-1974
SOLD TO CP RAIL-1985
CP RAIL SOLD TO IRML-1997

25

205

200



SPEED

CURVE

RAIL

INDL

TIES

SURF/LTNE

SH 9020
1935

SH 90
1929

SH9020
1944

1983

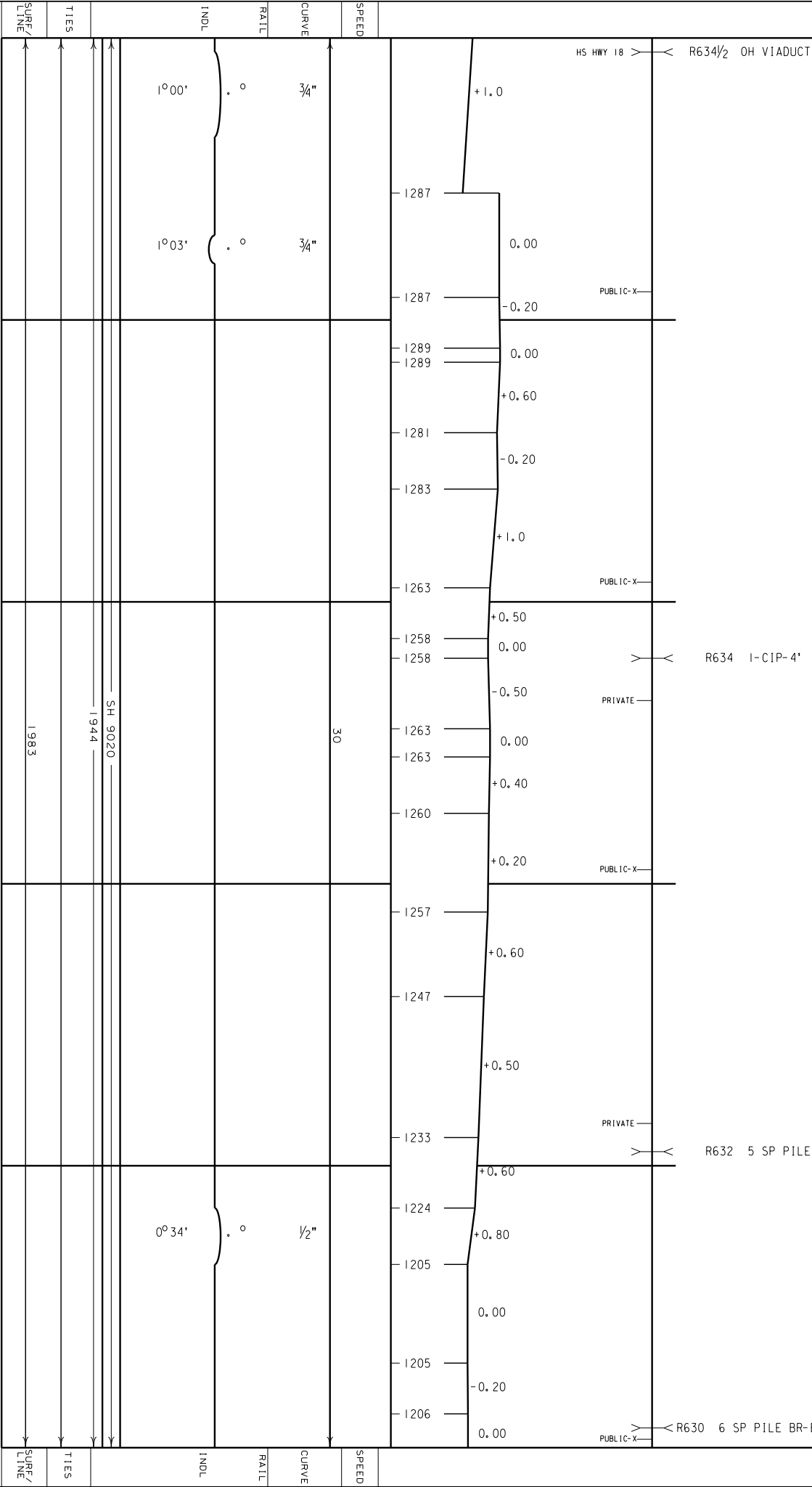
HARTLEY IND LD - ESTHERVILLE SUB

26

UP HAS TRACKAGE RIGHTS OVER CPRAIL (500) PER AGREEMENT 11-19-1974
 CP RAIL SOLD TO IRML-1985
 CP RAIL SOLD TO IRML-1997

200

195

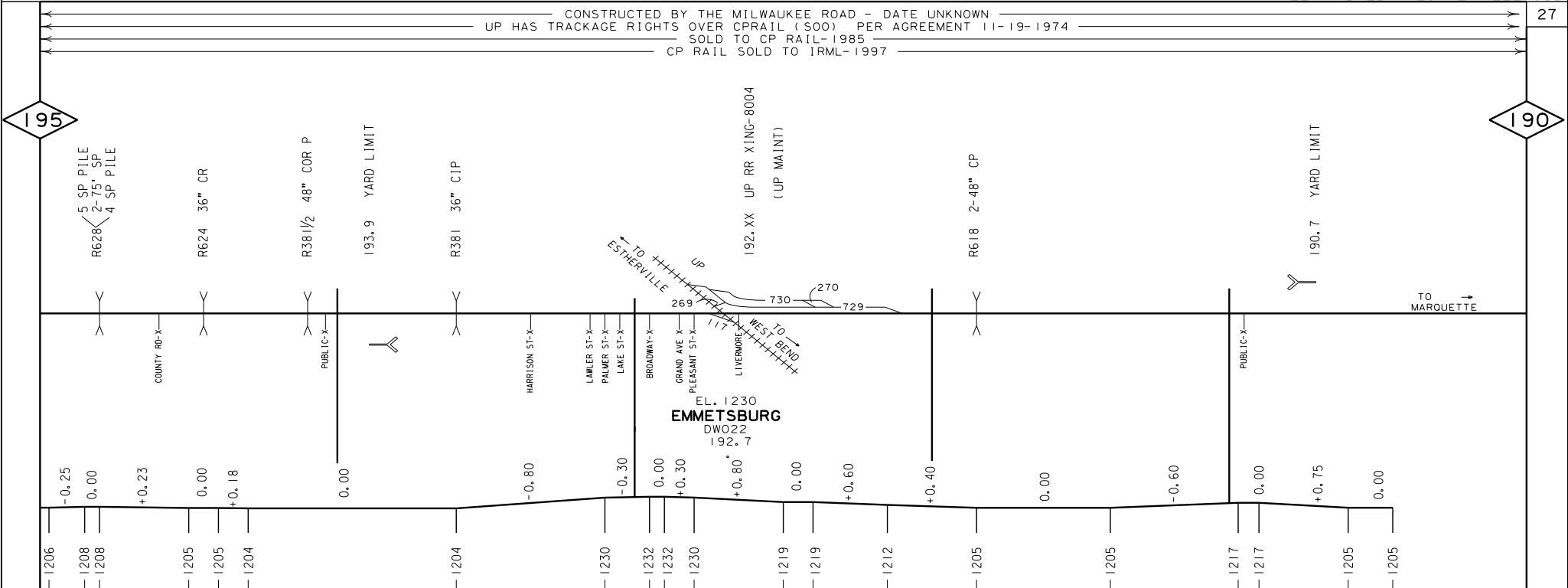


INDL	RATL	CURVE	SPEED	SURF/LINE	TIES
1°00'	3/4"	30		1983	
1°03'	3/4"				
0°34'	1/2"				

CONSTRUCTED BY THE MILWAUKEE ROAD - DATE UNKNOWN
 UP HAS TRACKAGE RIGHTS OVER CPRAIL (SOO) PER AGREEMENT 11-19-1974
 SOLD TO CP RAIL-1985
 CP RAIL SOLD TO IRML-1997

195

190



SPEED		30			
CURVE			1/4"		
RAIL			0		
INDL			0°30'		
TIES	SH9020 44 ← 1945 →		SH 9020 1949		
SURF/LINE			1983		