

NATIONAL TRANSPORTATION SAFETY BOARD
OFFICE OF AVIATION SAFETY
Western Pacific Region
Federal Way, Washington
 November 1, 2016
 ERRATA#2 TO NTSB FACTUAL NARRATIVE FIGURES
 NTSB ID No.: WPR15MA243AB

A. ACCIDENT

Location: San Diego, California

Date: August 16, 2015

Time: 1103 Pacific Daylight Time

Aircraft A: Cessna 172M, N1285U

Aircraft B: North American Rockwell NA265-60SC Sabreliner, N422RM

B. NTSB Factual Narrative Figure

REPLACE:

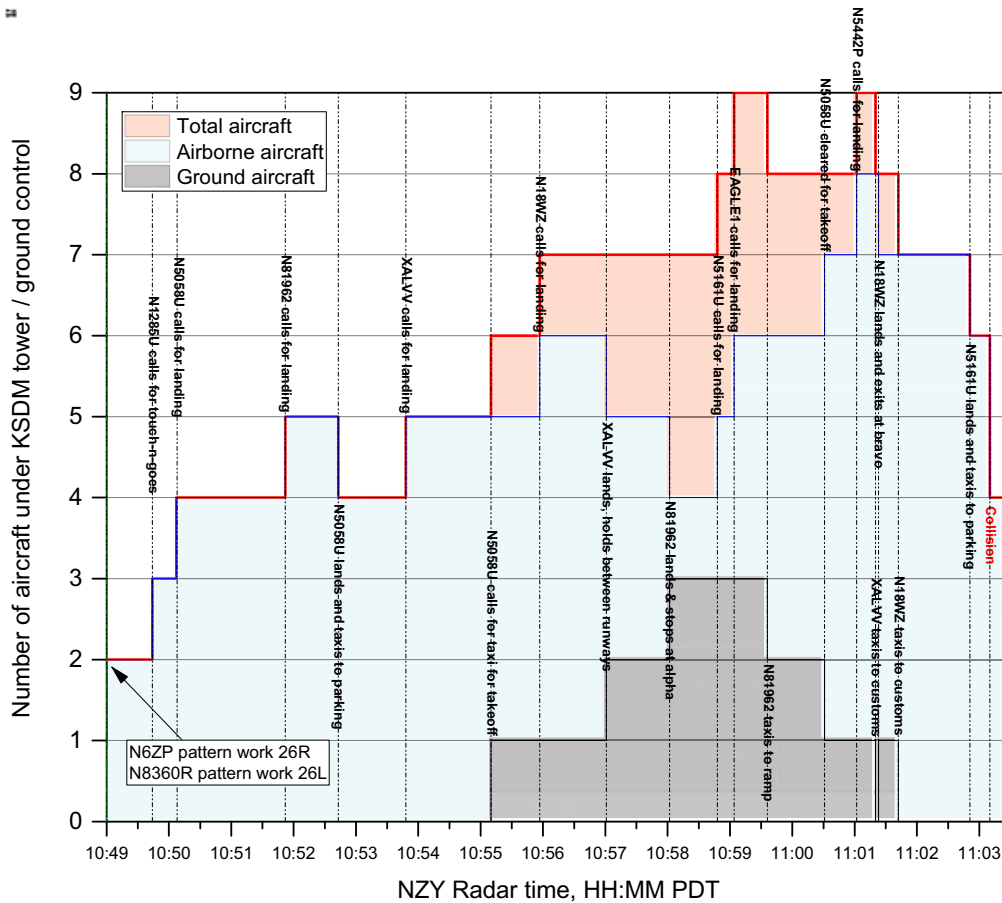


Figure 4. Total aircraft under SDM ATCT control from 1049 until the time of the collision.

WITH:

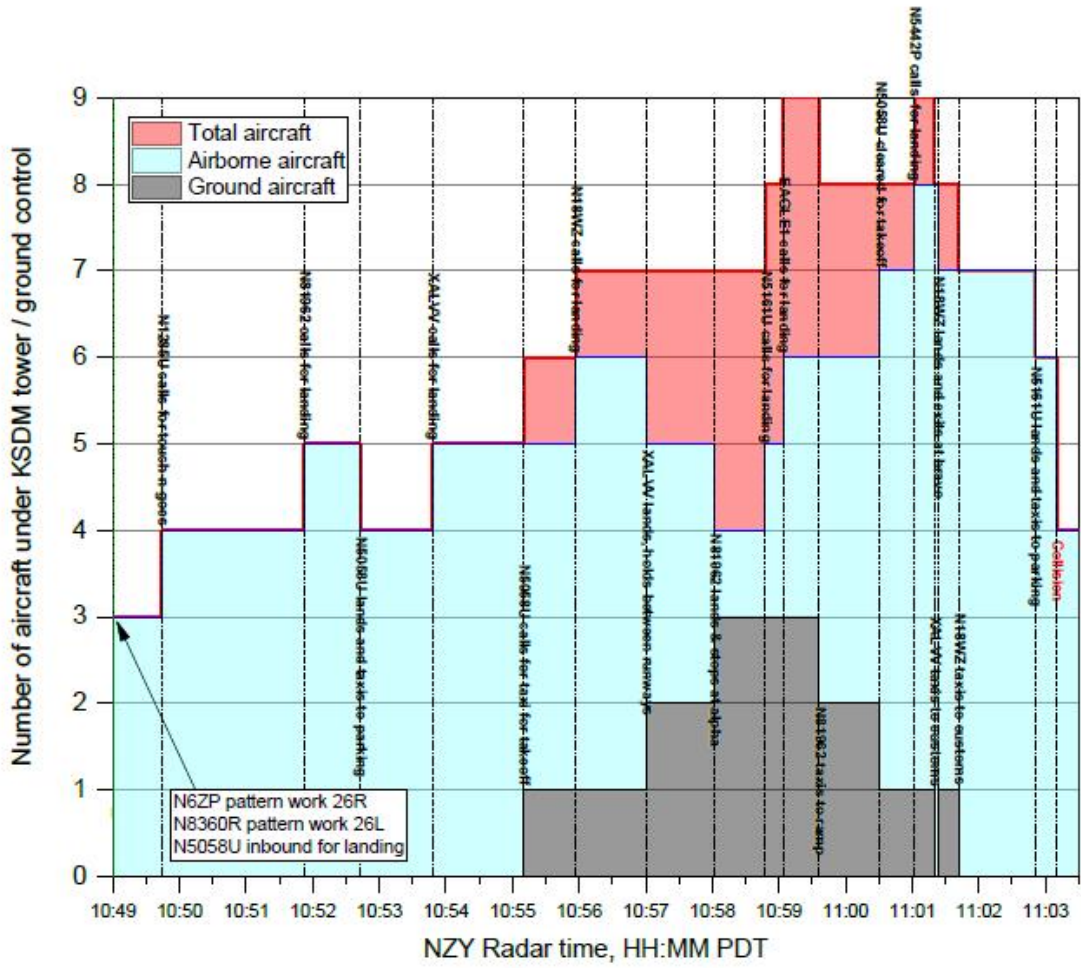


Figure 4. Total aircraft under SDM ATCT control from 1049 until the time of the collision.