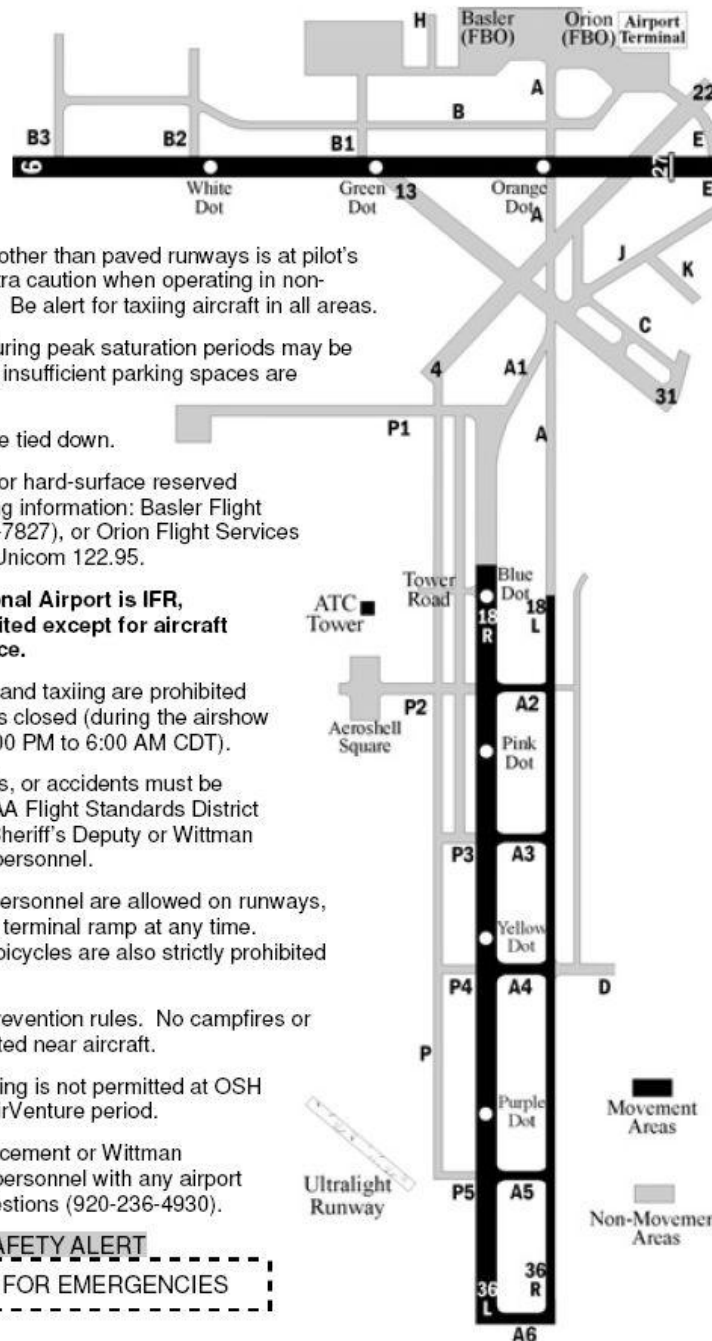


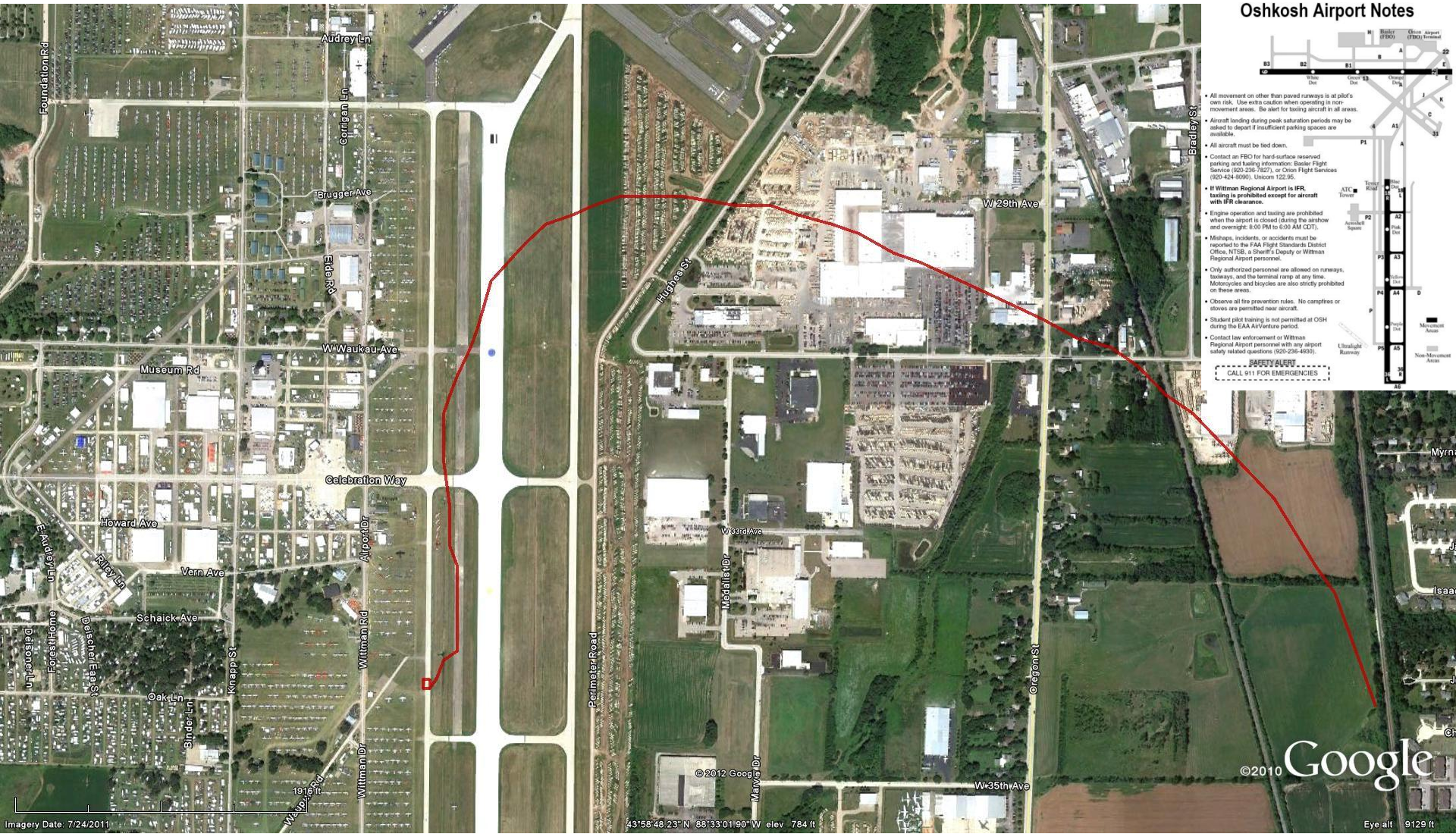
Oshkosh Airport Notes



- All movement on other than paved runways is at pilot's own risk. Use extra caution when operating in non-movement areas. Be alert for taxiing aircraft in all areas.
- Aircraft landing during peak saturation periods may be asked to depart if insufficient parking spaces are available.
- All aircraft must be tied down.
- Contact an FBO for hard-surface reserved parking and fueling information: Basler Flight Service (920-236-7827), or Orion Flight Services (920-424-8090). Unicom 122.95.
- **If Wittman Regional Airport is IFR, taxiing is prohibited except for aircraft with IFR clearance.**
- Engine operation and taxiing are prohibited when the airport is closed (during the airshow and overnight: 8:00 PM to 6:00 AM CDT).
- Mishaps, incidents, or accidents must be reported to the FAA Flight Standards District Office, NTSB, a Sheriff's Deputy or Wittman Regional Airport personnel.
- Only authorized personnel are allowed on runways, taxiways, and the terminal ramp at any time. Motorcycles and bicycles are also strictly prohibited on these areas.
- Observe all fire prevention rules. No campfires or stoves are permitted near aircraft.
- Student pilot training is not permitted at OSH during the EAA AirVenture period.
- Contact law enforcement or Wittman Regional Airport personnel with any airport safety related questions (920-236-4930).

SAFETY ALERT

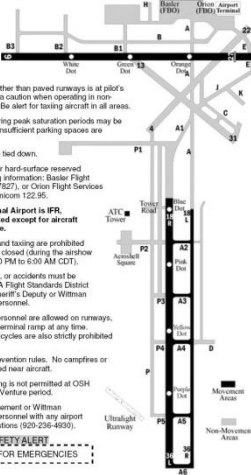
CALL 911 FOR EMERGENCIES



Oshkosh Airport Notes

- All movement on other than paved runways is at pilot's own risk. Use extra caution when operating in non-movement areas. Be alert for taxing aircraft in all areas.
- Aircraft landing during peak saturation periods may be asked to depart if insufficient parking spaces are available.
- All aircraft must be tied down.
- Contact an FBO for hard-surface reserved parking and taxiing information: Basler Flight Service (920-236-7677), or Cross Flight Services (920-424-8090), Unicom 122.95.
- **If Writman Regional Airport is IFR, taxiing is prohibited except for aircraft with IFR clearance.**
- Engine operation and taxiing are prohibited when the airport is closed (during the asterisk and overnight: 8:00 PM to 6:00 AM CDT).
- Mishaps, incidents, or accidents must be reported to the FAA Flight Standards District Office, NTSB, a Sheriff's Deputy or Writman Regional Airport personnel.
- Only authorized personnel are allowed on runways, taxiways, and the terminal ramp at any time. Motorcycles and bicycles are also strictly prohibited on these areas.
- Observe all fire prevention rules. No campfires or stoves are permitted near aircraft.
- Student pilot training is not permitted at OSH during the EAA AirVenture period.
- Contact law enforcement or Writman Regional Airport personnel with any airport safety related questions (920-236-4938).

SAFETY ALERT
CALL 911 FOR EMERGENCIES

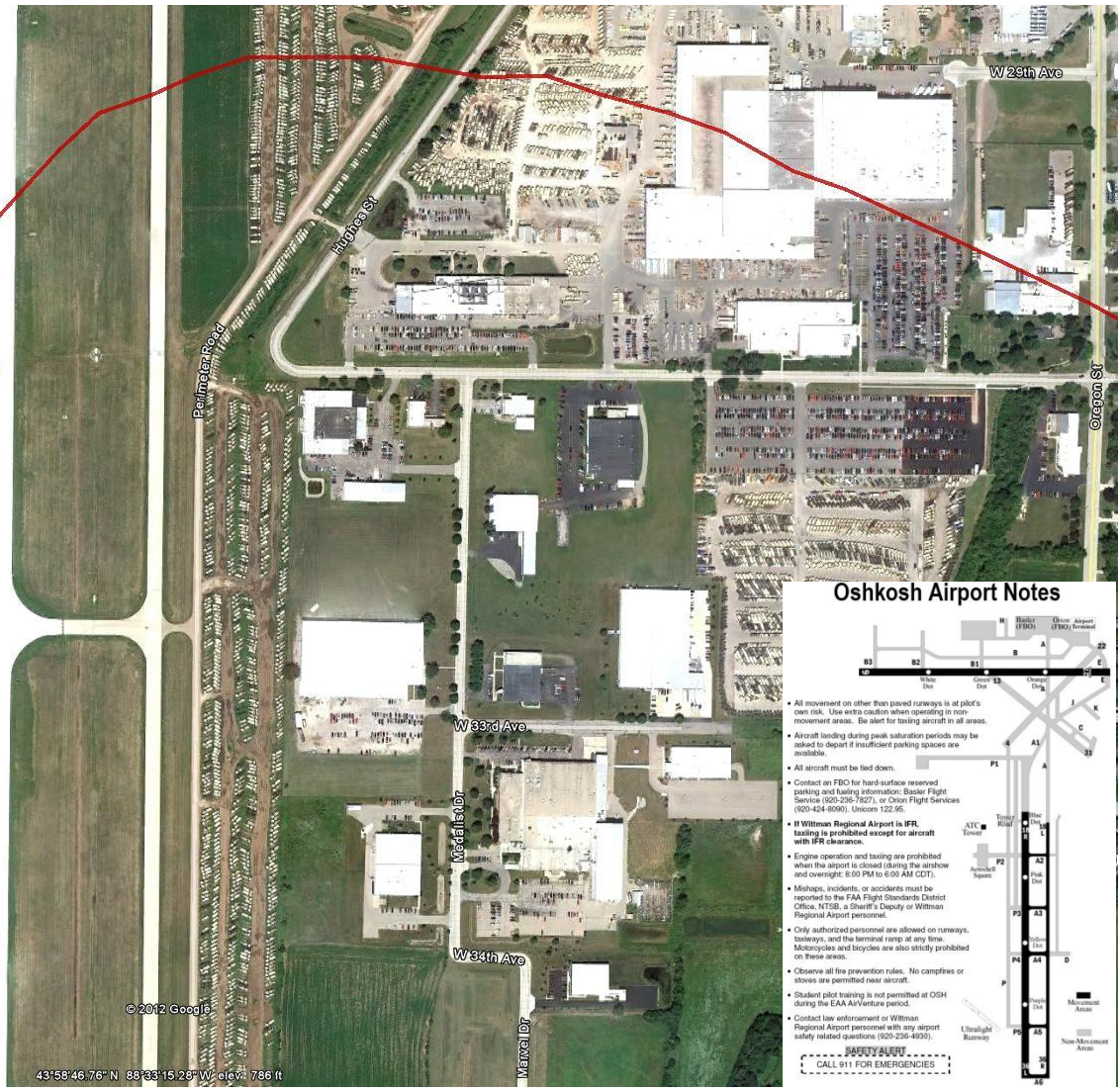
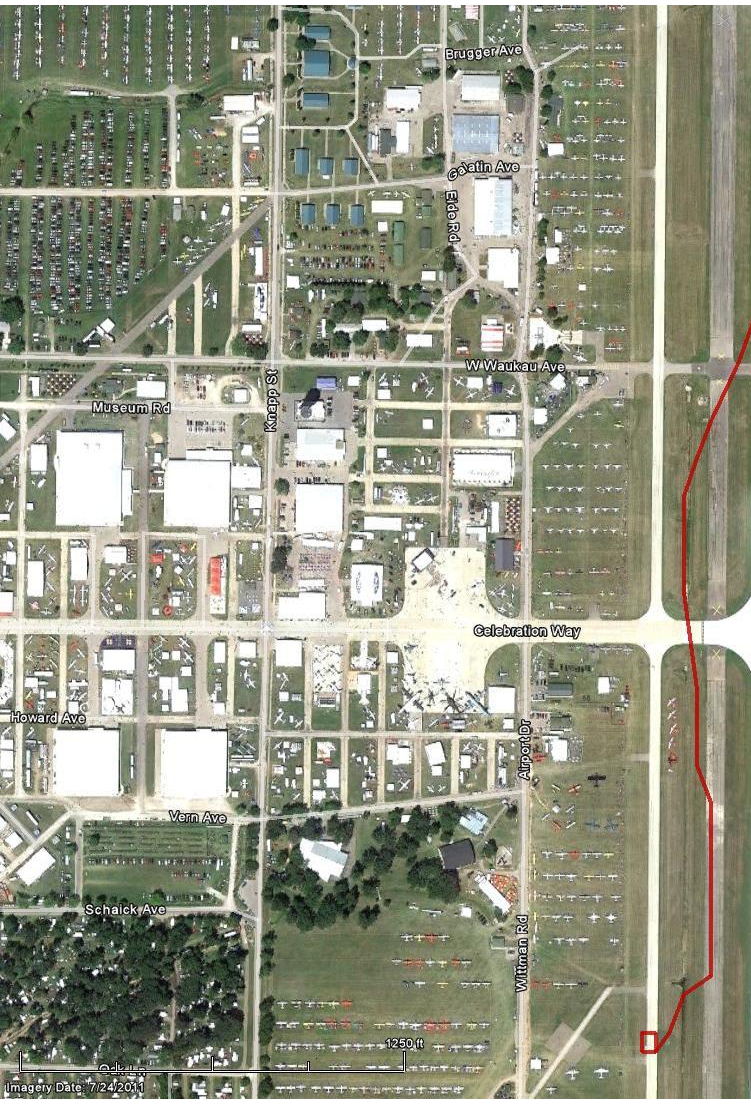


©2012 Google

©2010 Google

43°58'48.23" N 88°33'01.90" W elev. 784 ft

Eye alt 9129 ft



Oshkosh Airport Notes



- All movement on other than paved runways is at pilot's own risk. Use extra caution when operating in non-movement areas. Be alert for taxiing aircraft in all areas.
- Aircraft landing during peak saturation periods may be asked to depart if insufficient parking spaces are available.
- All aircraft must be tied down.
- Contact an FBO for hard-surface reserved parking and taxiing information: Basler Flight Services (920-236-7627), or Orion Flight Services (920-424-8090), Unicom 122.95.
- If Wittman Regional Airport is IFR, taxiing is prohibited except for aircraft with IFR clearance.
- Engine operation and taxiing are prohibited when the airport is closed during the amber and overnight: 8:00 PM to 6:00 AM CDT.
- Mishaps, incidents, or accidents must be reported to the FAA Flight Standards District Office, NTSB, a Sheriff's Deputy or Wittman Regional Airport personnel.
- Only authorized personnel are allowed on runways, taxiways, and the terminal ramp at any time. Motorcycles and bicycles are also strictly prohibited on these areas.
- Observe all fire prevention rules. No campfires or stoves are permitted near aircraft.
- Student pilot training is not permitted at OSH during the EAA AVventure period.
- Contact law enforcement or Wittman Regional Airport personnel with any airport safety related questions (920-236-4900).

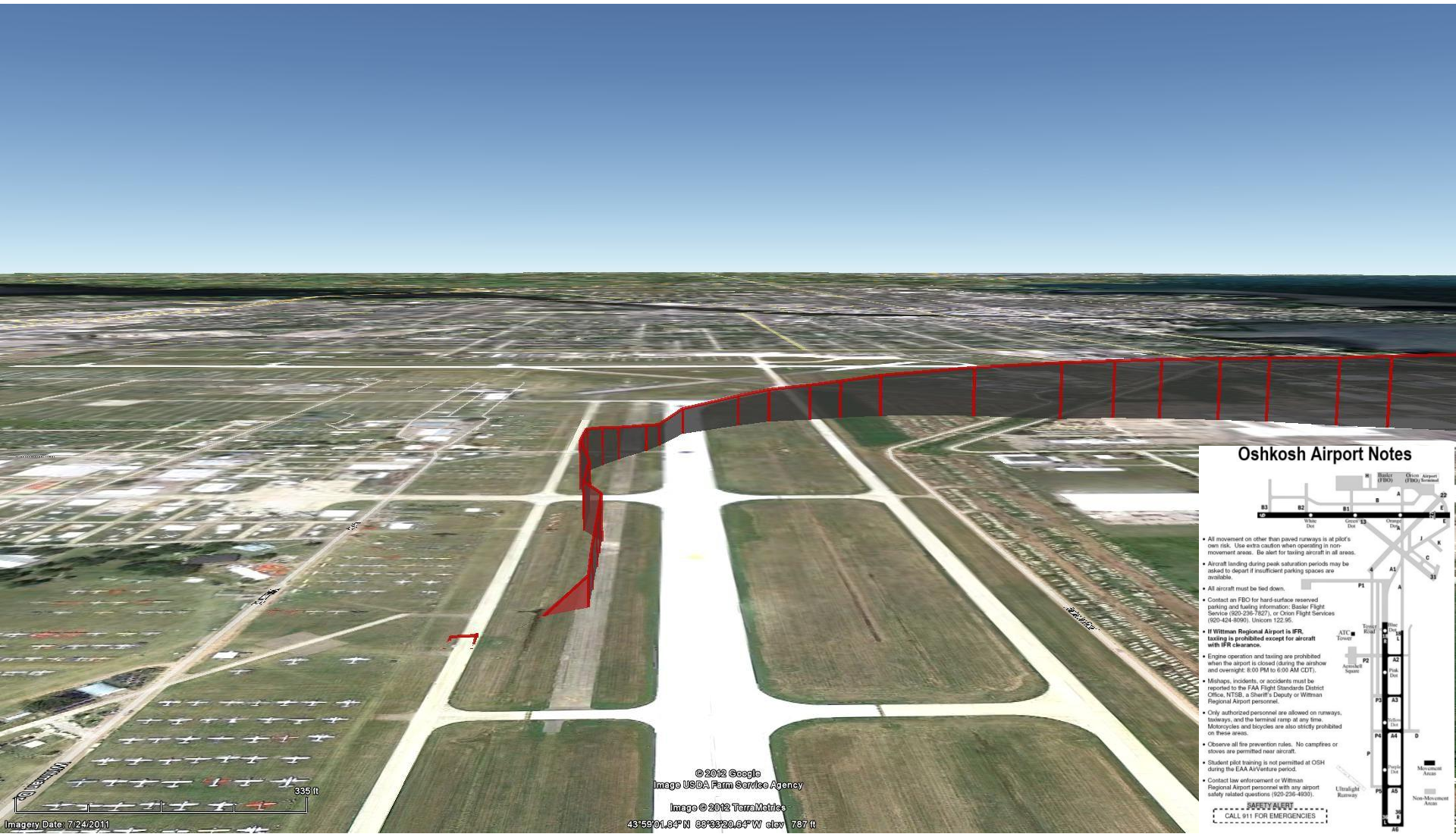
SAFETY ALERT
CALL 911 FOR EMERGENCIES

© 2012 Google

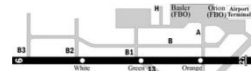
43°58'46.76" N 83°33'15.28" W Elev: 786 ft

Imagery Date: 7/24/2011

1250 ft



Oshkosh Airport Notes



- All movement on other than paved runways is at pilot's own risk. Use extra caution when operating in non-movement areas. Be alert for taxiing aircraft in all areas.
- Aircraft landing during peak saturation periods may be asked to depart if insufficient parking spaces are available.
- All aircraft must be tied down.
- Contact an FBO for hard-surface reserved parking and taxiing information: Basler Flight Services (920-236-7527), or Orion Flight Services (920-424-8090), Unicom 122.95.
- If Wittman Regional Airport is IFR, taxiing is prohibited except for aircraft with IFR clearance.
- Engine operation and taxiing are prohibited when the airport is closed during the anshour and overnight: 8:00 PM to 8:00 AM CDT.
- Mishaps, incidents, or accidents must be reported to the FAA Flight Standards District Office, NTSB, a Sheriff's Deputy or Wittman Regional Airport personnel.
- Only authorized personnel are allowed on runways, taxiways, and the terminal ramp at any time. Motorcycles and bicycles are also strictly prohibited on these areas.
- Observe all fire prevention rules. No campfires or stoves are permitted near aircraft.
- Student pilot training is not permitted at OSH during the EAA AirVenture period.
- Contact law enforcement or Wittman Regional Airport personnel with any airport safety related questions (920-236-4920).

SAFETY ALERT
CALL 911 FOR EMERGENCIES

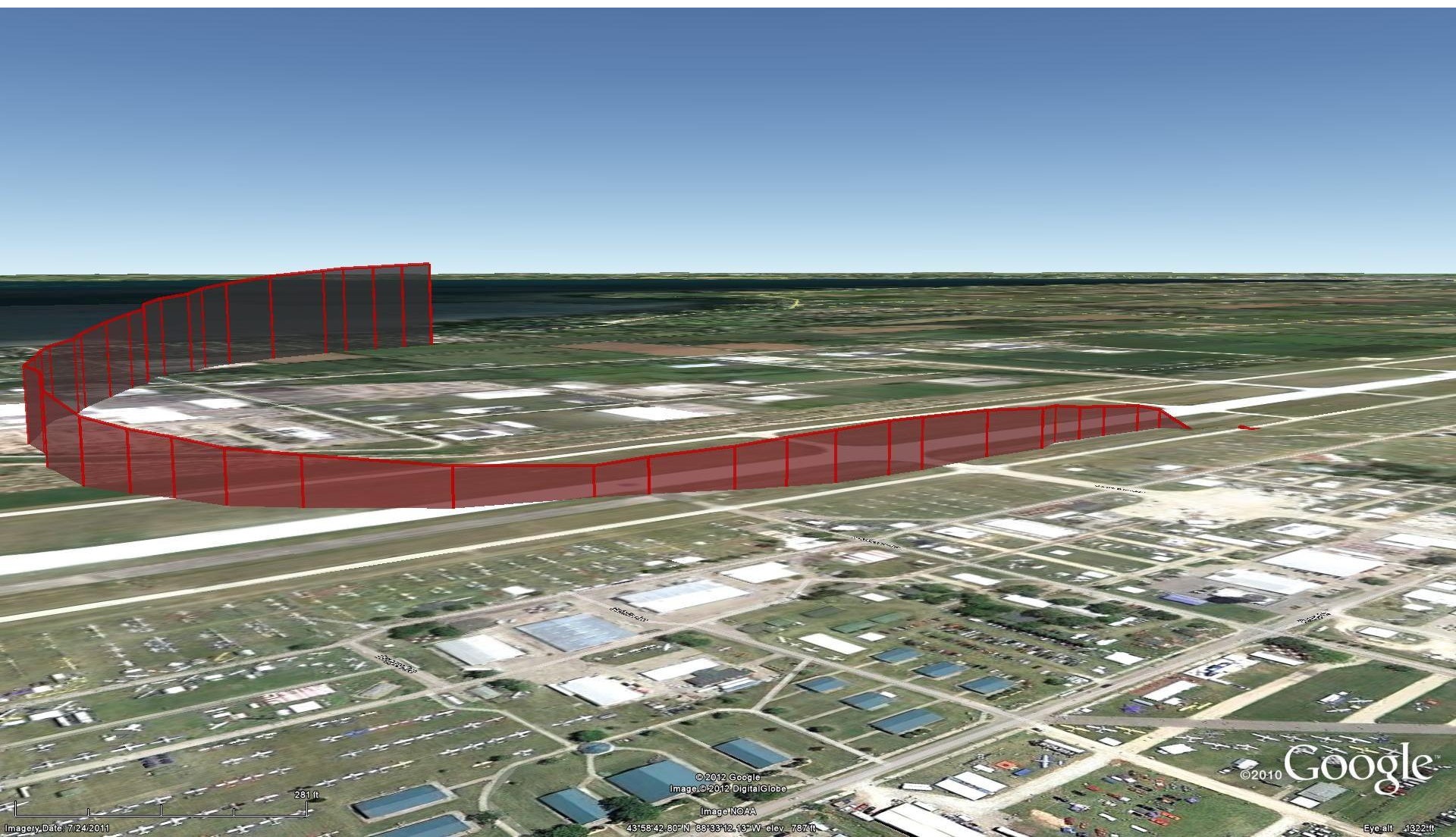
© 2012 Google
Image USDA Farm Service Agency

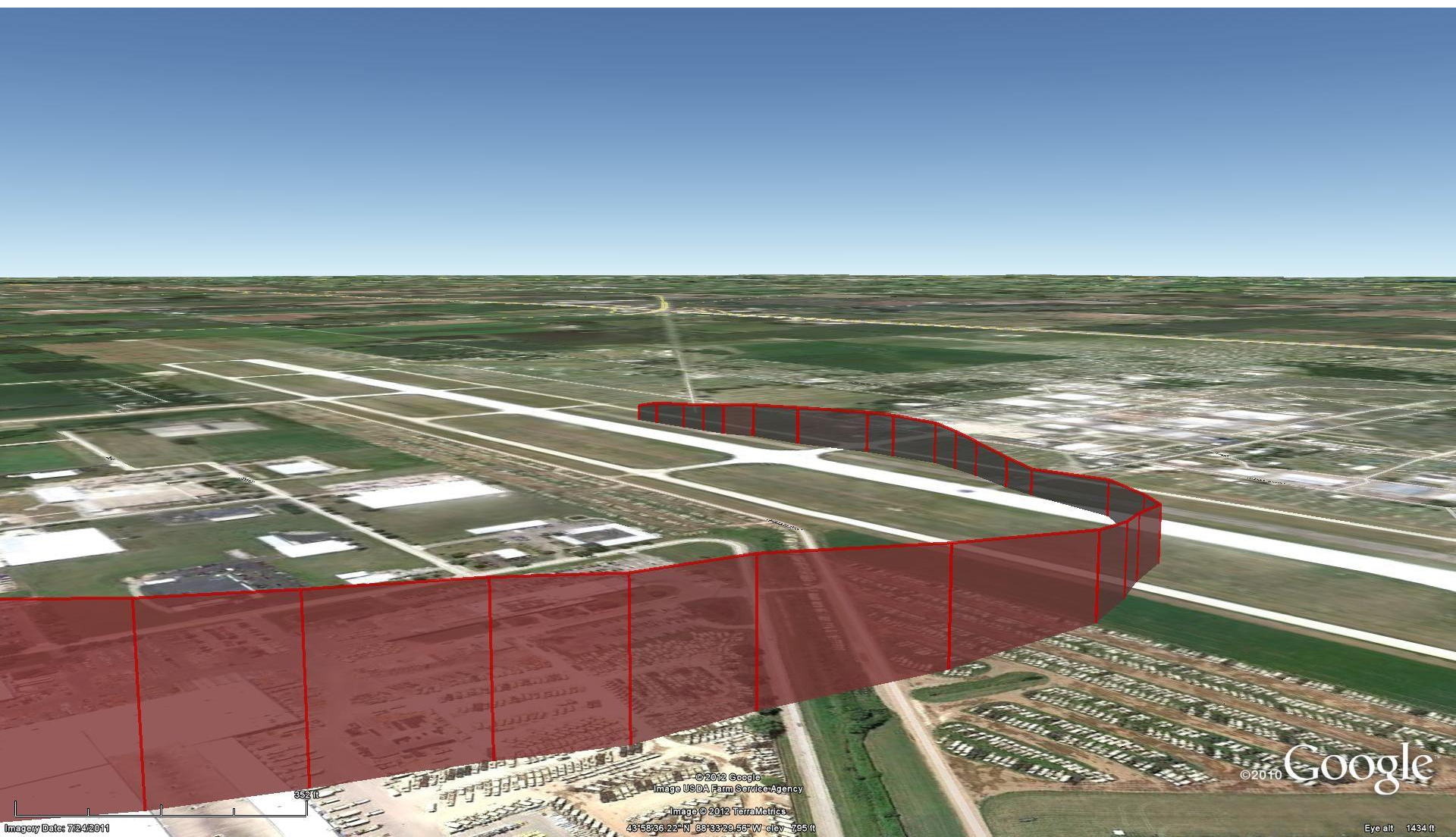
Image © 2012 TerraMetrics

43°59'01.84" N 88°33'20.64" W elev 787 ft

Imagery Date: 7/24/2011

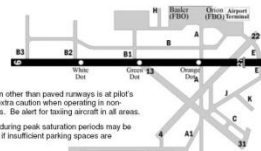
335 ft







Oshkosh Airport Notes



- All movement on other than paved runways is at pilot's own risk. Use extra caution when operating in non-movement areas. Be alert for taxiing aircraft in all areas.
- Aircraft landing during peak saturation periods may be asked to depart if insufficient parking spaces are available.
- All aircraft must be tied down.
- Contact an FBO for hard surface reserved parking and taxiing information: Basler Flight Service (800-236-7527), or Orion Flight Services (608-644-8966), Unicom 122.95.
- If Witman Regional Airport is IFR, taxiing is prohibited except for aircraft with IFR clearance.
- Engine operation and taxiing are prohibited when the airport is closed (during the airshow and overnight: 6:00 PM to 6:00 AM CST).
- Mishaps, incidents, or accidents must be reported to the FAA Flight Standards District Office, NTSB, a Sheriff's Deputy or Witman Regional Airport personnel.
- Only authorized personnel are allowed on runways, taxiways, and the terminal ramp at any time. Motorcycles and bicycles are also strictly prohibited on these areas.
- Observe all the prevention rules. No campfires or stoves are permitted near aircraft.
- Student pilot training is not permitted at OSH during the EAA AirVenture period.
- Contact law enforcement or Witman Regional Airport personnel with any airport safety related questions (920-236-4000).

SAFETY ALERT
CALL 911 FOR EMERGENCIES

© 2012 Google
Image USA Farm Service Agency

Image © 2012 TerraMetrics
43°58'33.84" N 88°33'23.58" W elev 792 ft

288 ft

Imagery Date: 7/24/2011



Oshkosh Airport Notes



- All movement on other than paved runways is at pilot's own risk. Use extra caution when operating in non-movement areas. Be alert for taxiing aircraft in all areas.
- Aircraft landing during peak saturation periods may be asked to depart if insufficient parking spaces are available.
- All aircraft must be tied down.
- Contact an FBO for hard surface reserved parking and taxiing information: Basler Flight Service (800-236-7827), or Orion Flight Services (608-64-8960), Unicom 122.95.
- **If Wittman Regional Airport is IFR, taxiing is prohibited except for aircraft with IFR clearance.**
- Engine operation and taxiing are prohibited when the airport is closed (during the airshow and overnight: 6:00 PM to 6:00 AM CST).
- Mishaps, incidents, or accidents must be reported to the FAA Flight Standards District Office, NTSB, a Sheriff's Deputy or Wittman Regional Airport personnel.
- Only authorized personnel are allowed on runways, taxiways, and the terminal ramp at any time. Motorcycles and bicycles are also strictly prohibited on these areas.
- Observe all the prevention rules, no campfires or stoves are permitted near aircraft.
- Student pilot training is not permitted at OSH during the EAA AirVenture period.
- Contact law enforcement or Wittman Regional Airport personnel with any airport safety related questions (900-236-6000).

SAFETY ALERT
CALL 911 FOR EMERGENCIES

© 2012 Google
Image USDA Farm Service Agency

Image © 2012 TerraMetrics
43°58'33.81" N 88°33'17.76" W elev 791 ft

223 ft

Imagery Date: 7/24/2011