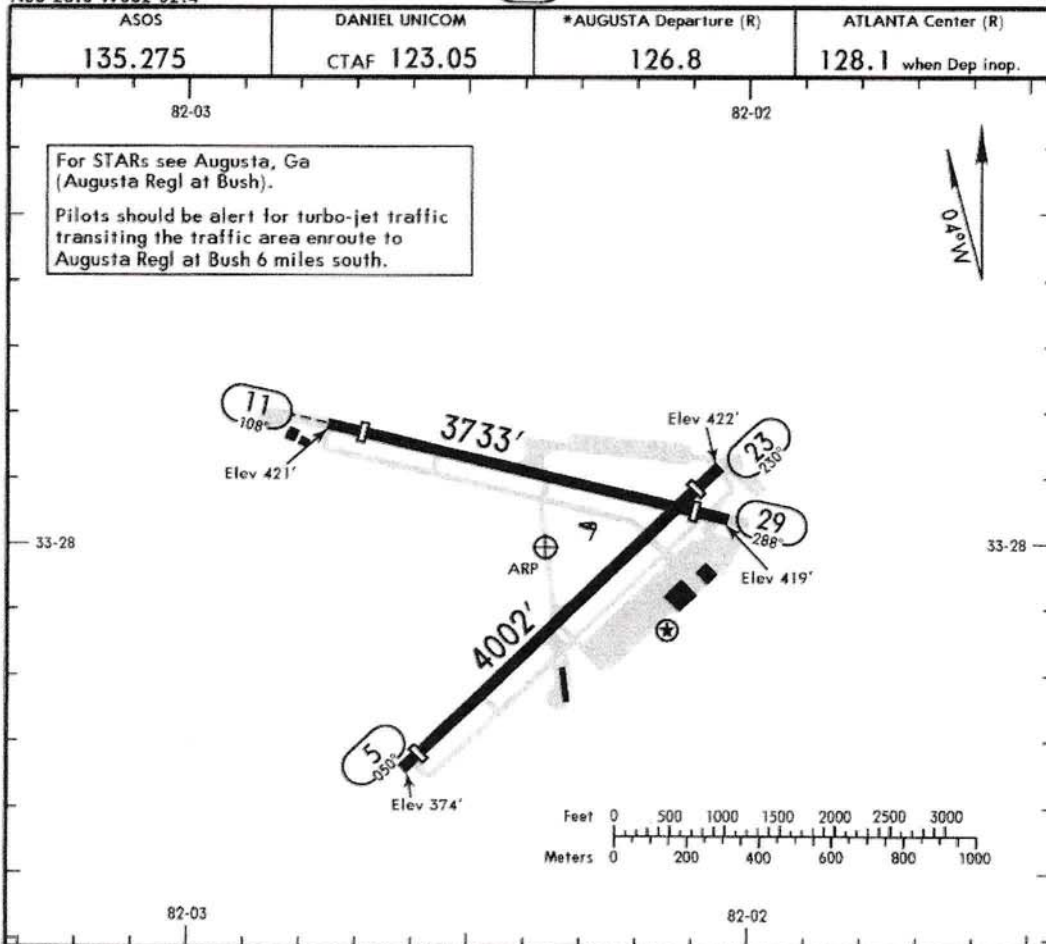


KDNL/DNL
 Apt Elev 422'
 N33 28.0 W082 02.4

JEPPESSEN
 15 NOV 19 (20-9)

AUGUSTA, GA
 DANIEL



RWY			USABLE LENGTHS			
			LANDING BEYOND		TAKE-OFF	WIDTH
			Threshold	Glide Slope		
5	① MIRL	① PAPI-L (angle 3.00°)	grooved	3800'		
23	① MIRL	① PAPI-L (angle 3.30°)	grooved	3704'		100'
11	① MIRL	① REIL	① ② PAPI-L (angle 3.50°)	3407'		100'
29	① MIRL	① REIL		3419'		

① Activate on 123.05.
 ② PAPI unusable beyond 3° left of Rwy centerline, PAPI is baffled.

TAKE-OFF & OBSTACLE DEPARTURE PROCEDURE				FOR FILING AS ALTERNATE Authorized Only When Local Weather Available		
Rwys 5, 11, 29		Rwy 23		VOR DME-B NDB Rwy 11	RNAV (GPS) Y Rwy 11	RNAV (GPS) Y Rwy 5
Adequate Vis Ref	STD	With Min climb of 250'/NM to 800'				
		Adequate Vis Ref	STD			
1 & 2 Eng	1/4	1	1	800-2	800-2	1100-4
3 & 4 Eng	1/4	1/2	1/2		1000-3	

OBSTACLE DP: Rwy 23, climb heading 215° to 1300' before turning right. Rwy 29, climb heading 288° to 1000' before turning left.

CHANGES: Rwy 5/23 surface.

© JEPPESSEN, 1998, 2019. ALL RIGHTS RESERVED.