

**WATER NOTES**

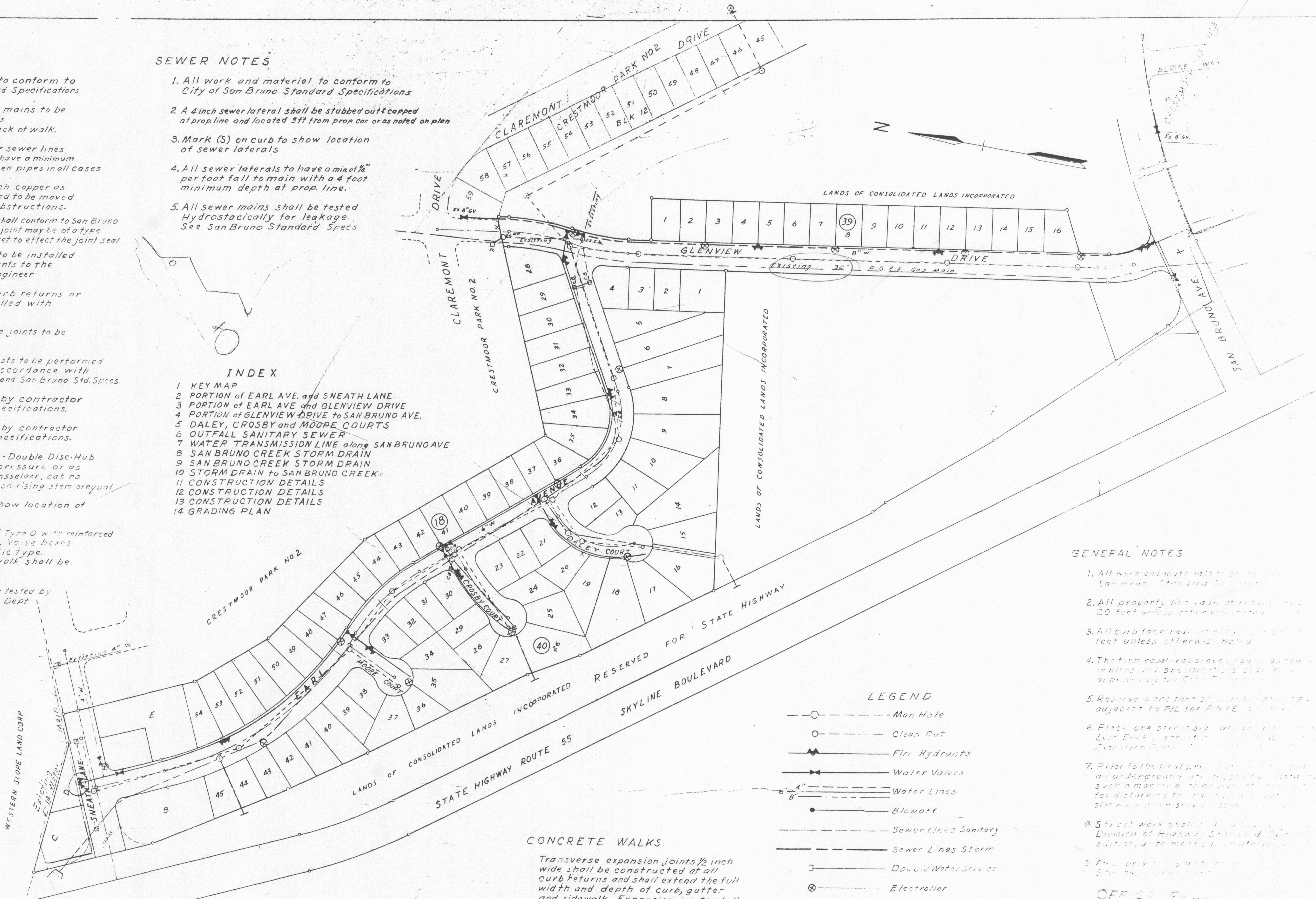
1. All work and materials to conform to City of San Bruno Standard Specifications
2. Minimum cover over all mains to be 2'-6" or as shown on Plans. Locate mains one foot back of walk.
3. Water mains to pass over sewer lines whenever possible and to have a minimum of 4 inch clearance between pipes in all cases
4. Service lines to be one inch copper as shown and specified, and to be moved as necessary to clear obstructions.
5. All mains to be cast iron and shall conform to San Bruno Specs in all respects except joint may be of a type which employs a single gasket to effect the joint seal
6. Concrete thrust blocks to be installed at all fittings and hydrants to the approval of the City Engineer
7. All hydrants to be at curb returns or lot lines and to be installed with 6 inch valves as shown.
8. Deflection angle of pipe joints to be less than 5 degrees.
9. Pressure and leakage tests to be performed by the contractor in accordance with A.W.W.A. requirements and San Bruno Std. Specs.
10. Backfilling to be done by contractor in accordance with specifications.
11. Chlorinating to be done by contractor in accordance with specifications.
12. Valves shall be A.W.W.A. Double Disc-Hub End-17.5 p.s.i. working pressure or as noted. Valves to be Rensselaer, cat no H-130 with O-ring Seal & non-rising stem or equal
13. Mark (W) on curb to show location of water service.
14. Valve boxes to be "Form" Type O with reinforced cover and End or app. equal. Valve boxes in street shall be traffic type. Valve boxes at back of walk shall be nontraffic type.
15. All completed lines to be tested by San Mateo County Health Dept before final acceptance.

**SEWER NOTES**

1. All work and material to conform to City of San Bruno Standard Specifications
2. A 4 inch sewer lateral shall be stubbed out & capped at prop line and located 3ft from prop cor or as noted on plan
3. Mark (S) on curb to show location of sewer laterals
4. All sewer laterals to have a min of 1/4" per foot fall to main with a 4 foot minimum depth at prop line.
5. All sewer mains shall be tested Hydrostatically for leakage. See San Bruno Standard Specs.

**INDEX**

- 1 KEY MAP
- 2 PORTION of EARL AVE. and SNEATH LANE
- 3 PORTION of EARL AVE. and GLENVIEW DRIVE
- 4 PORTION of GLENVIEW DRIVE to SAN BRUNO AVE.
- 5 DALEY, CROSBY and MOORE COURTS
- 6 OUTFALL SANITARY SEWER
- 7 WATER TRANSMISSION LINE along SAN BRUNO AVE
- 8 SAN BRUNO CREEK STORM DRAIN
- 9 SAN BRUNO CREEK STORM DRAIN
- 10 STORM DRAIN to SAN BRUNO CREEK
- 11 CONSTRUCTION DETAILS
- 12 CONSTRUCTION DETAILS
- 13 CONSTRUCTION DETAILS
- 14 GRADING PLAN



**CONCRETE WALKS**

Transverse expansion joints 1/2 inch wide shall be constructed at all curb returns and shall extend the full width and depth of curb, gutter and sidewalk. Expansion joints shall be placed in such a manner that in no case shall the distance between expansion joints be greater than 45 feet. Weakened plane joints shall be constructed to a min depth of one (1) inch by scoring with a tool which will leave the corners rounded and insure free movement of the concrete at the joint. Weakened plane joints shall be constructed at intervals not to exceed 12 feet. The weakened plane joints as described in the City of San Bruno Standard Specifications will not be used.

**LEGEND**

- --- Man Hole
- --- Clean Out
- ◆ --- Fire Hydrants
- ◆ --- Water Valves
- Water Lines
- --- Blowoff
- Sewer Lines Sanitary
- Sewer Lines Storm
- Double Water Services
- ⊗ --- Electric

**GENERAL NOTES**

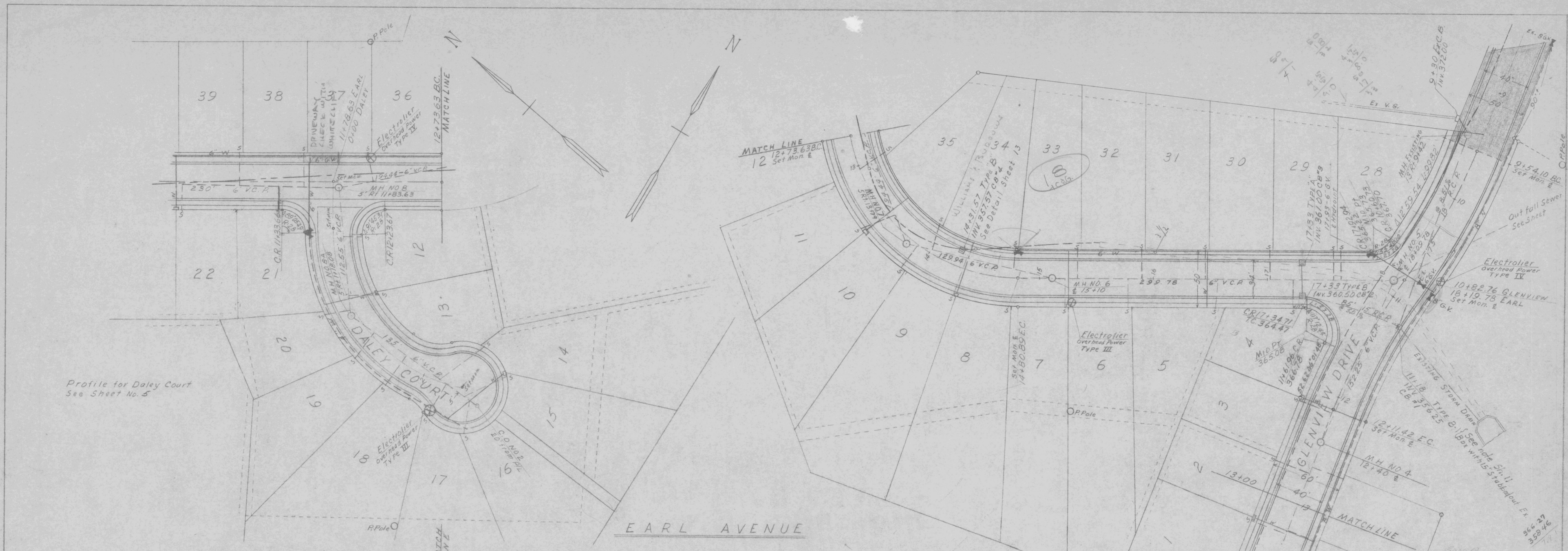
1. All work and materials to conform to San Bruno Standard Specifications
2. All property lines shall be shown and 20 feet unless otherwise noted
3. All curb face radii shall be 10 feet unless otherwise noted
4. The turn equal radii shown shall be in place and specifications shall be in accordance with the City of San Bruno Standard Specifications
5. Reserve a one foot strip of sidewalk adjacent to P.U.L. for P.S.E. or other
6. Place one street sign at each corner of lot E-25, street name to be as shown. Extension shall be as shown.
7. Prior to the final paving of the street all underground utilities shall be located and such a marking to avoid the possibility of disturbing the same shall be made. A sign shall be placed at each corner of the lot.
8. Street work shall be done in accordance with Division of Highway Construction Specifications to be used in the City of San Bruno.
9. All work shall be done in accordance with the City of San Bruno Standard Specifications.

**KEYMAP of IMPROVEMENTS**  
for  
**CRESTMOR PARK NO 2**

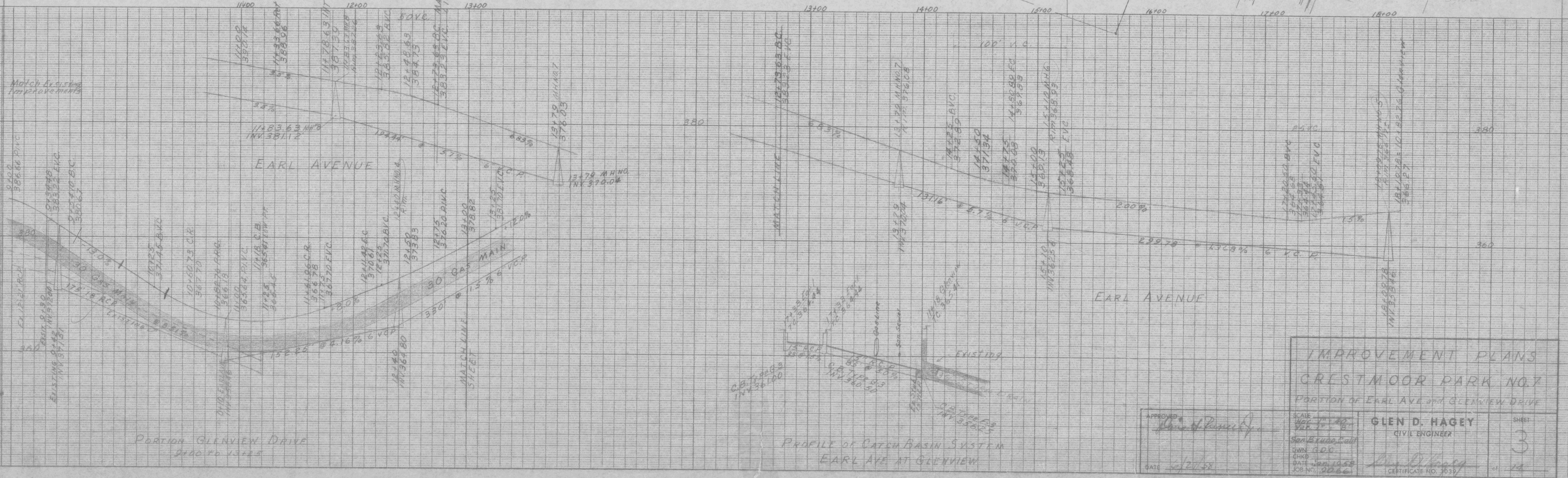
APPROVED: *[Signature]*  
DATE: 6-2-53

SCALE: \_\_\_\_\_  
DWN: \_\_\_\_\_  
CHKD: \_\_\_\_\_  
DATE: \_\_\_\_\_

**GLEN D. HAGEY**  
CIVIL ENGINEER



Profile for Daley Court  
See Sheet No. 5



PORTION GLENVIEW DRIVE  
9400 TO 13125

PROFILE OF CATCH BASIN SYSTEM  
EARL AVE AT GLENVIEW

IMPROVEMENT PLANS  
CRESTMOR PARK NO. 7  
PORTION OF EARL AVE. AND GLENVIEW DRIVE

APPROVED <i>[Signature]</i>	SCALE HORIZ. 1" = 40' VERT. 1" = 4'	GLEN D. HAGEY CIVIL ENGINEER	SHEET 3
DATE 6/27/58	SIGNED JOHN J. HAYES CIVIL ENGINEER CERTIFICATE NO. 10337		OF 14