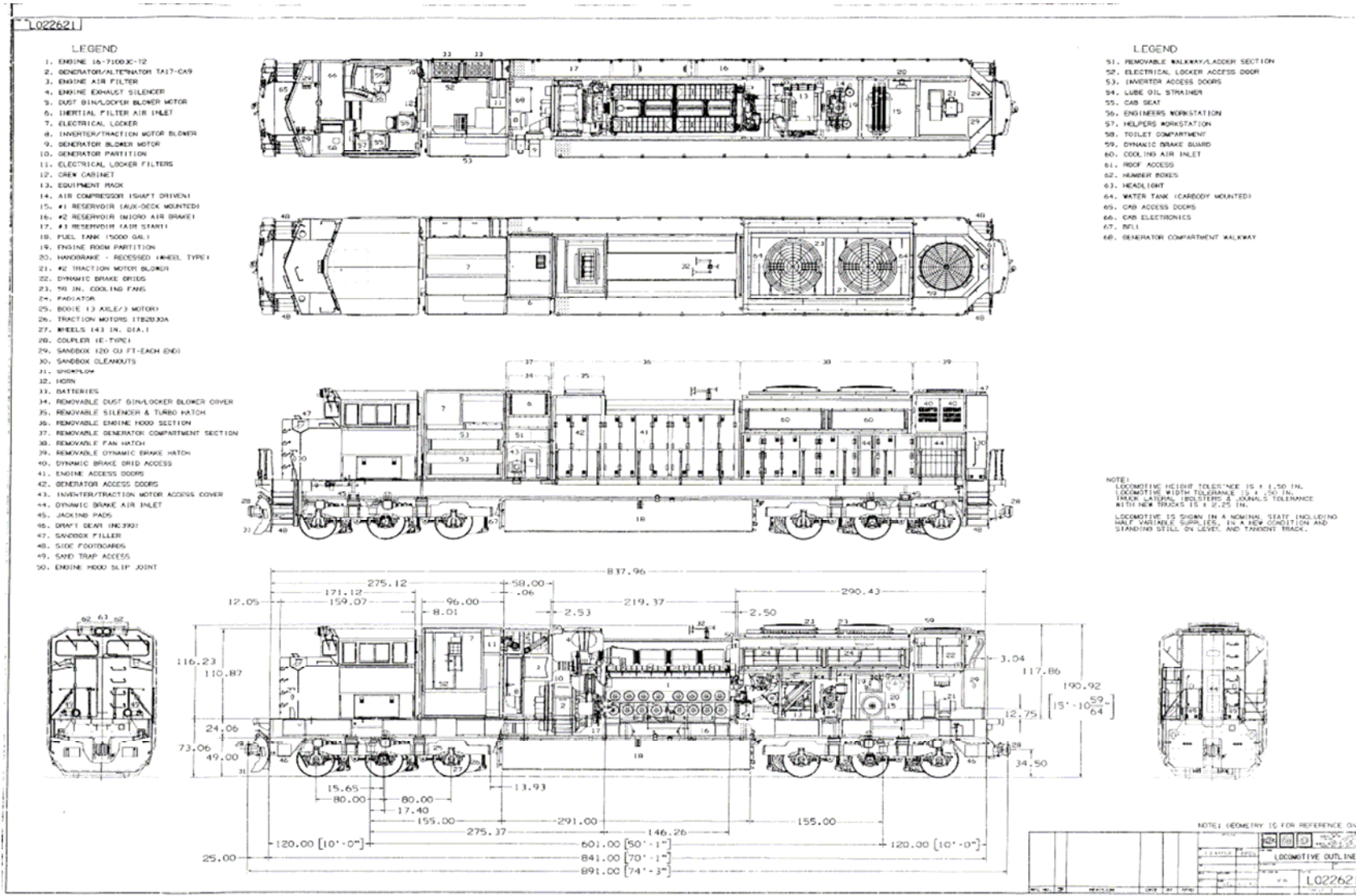


Exhibit 5.

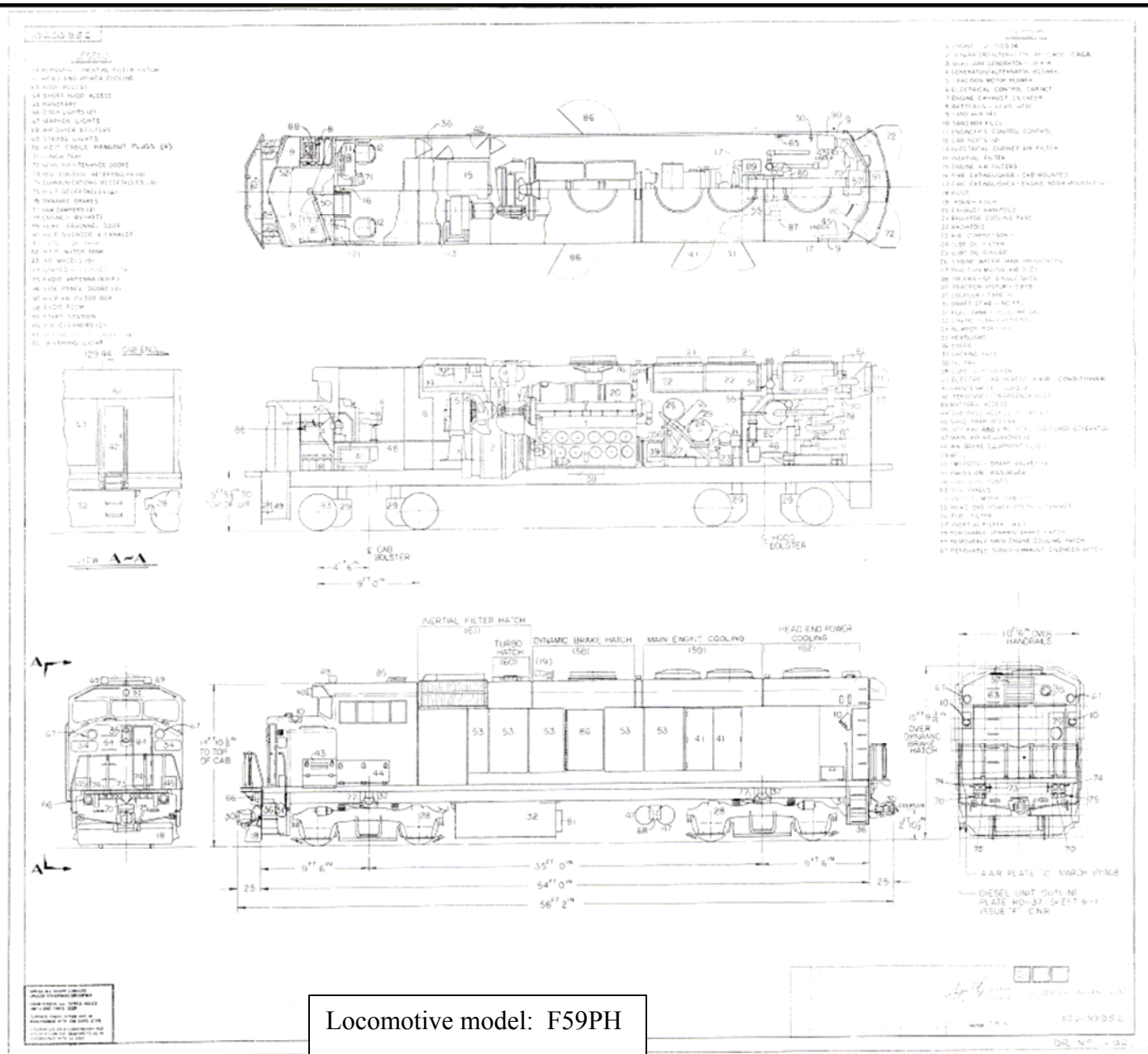
Basic Illustrations (‘Outline Drawings’) of the Two Individual Locomotive Model Types Involved in the Accident¹⁴⁰

- SD70ACe
- F59PH

¹⁴⁰ source – documentation courtesy of the locomotive manufacturer (Electro-Motive Diesel, Inc.)



Locomotive model: SD70Ac



Locomotive model: F59PH

-- End of Exhibit --