

Exhibit 10.

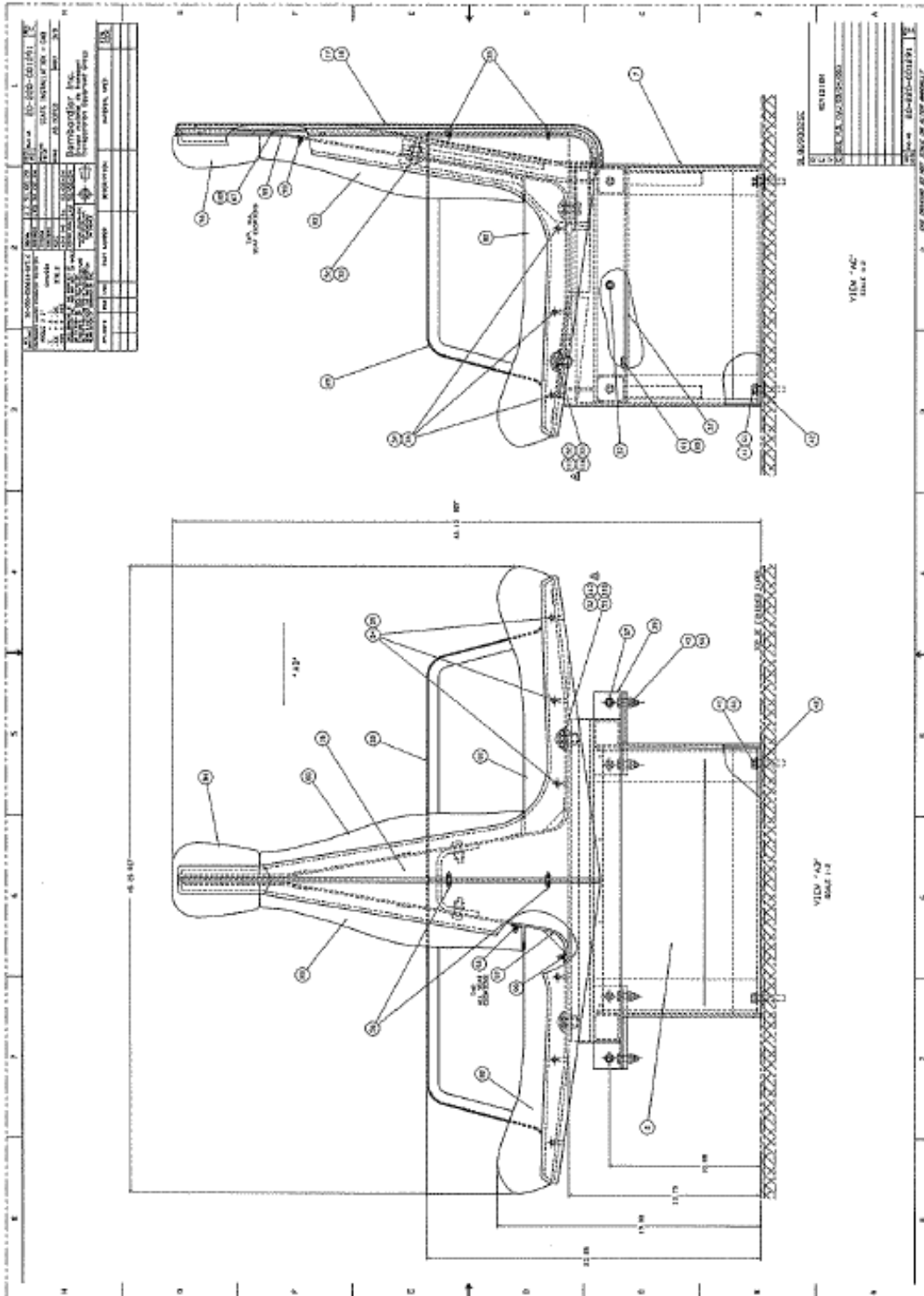
Illustrations of the ‘Paired Seating Sets’, ‘Work-Station Tables’, and ‘Seat Numbering Arrangement’ for the BiLevel Passenger Coach (Contract 200 and Contract 214 Delivery Series)

Contents (commencing on the following page)¹⁴⁴:

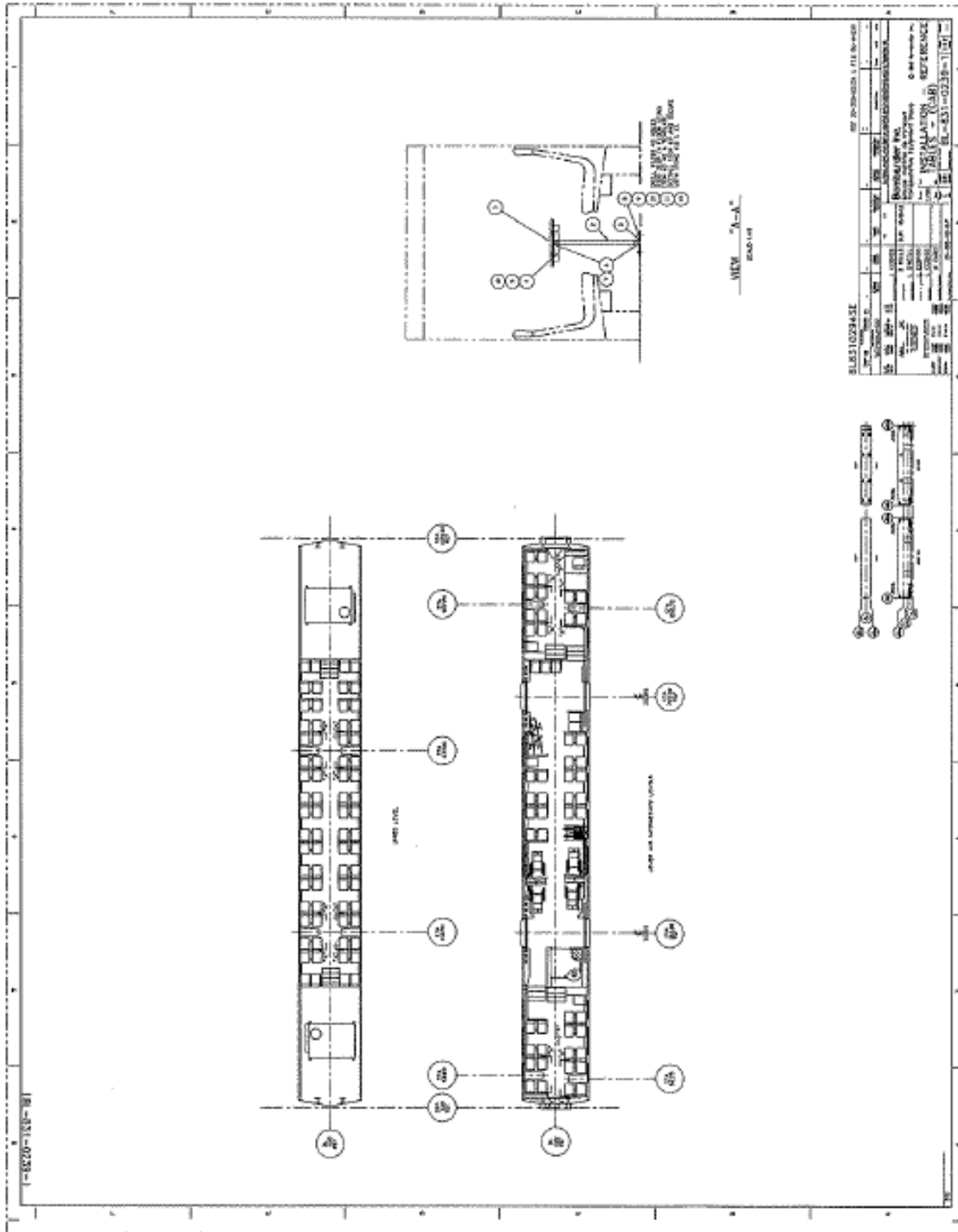
- for the Contract 200 (‘1st Generation’) BiLevel Coach, engineering drawings for ‘paired seating sets’, ‘work-station tables’, and illustration of ‘seat numbering arrangement’.
- for the Contract 214 (‘3rd Generation’) BiLevel Coach, engineering drawings for ‘paired seating sets’, ‘work-station tables’, and illustrations of ‘seat numbering arrangement’.

¹⁴⁴ ref. email dated Feb. 04, 2009; information from Bombardier technical representative, on behalf of Bombardier Party representative, and as noted.

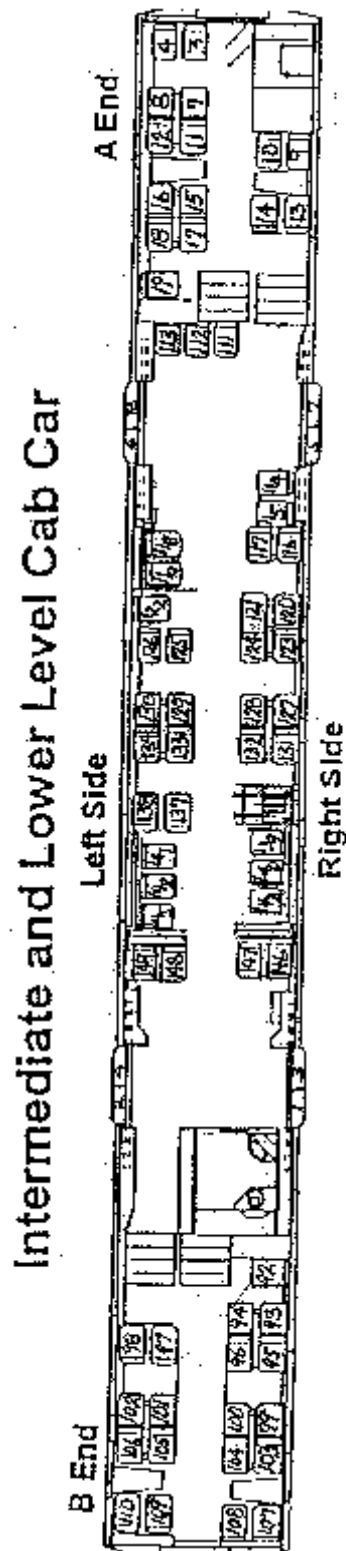
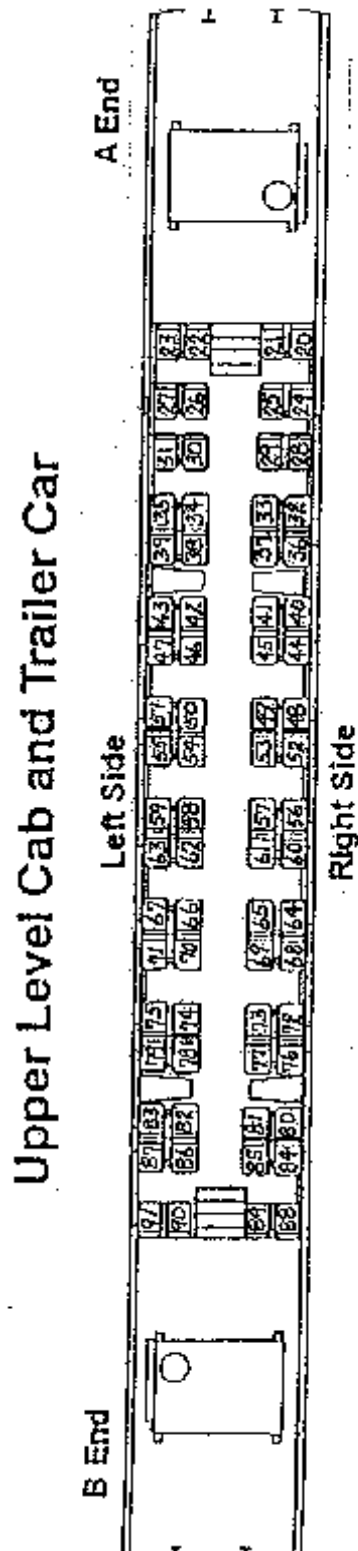
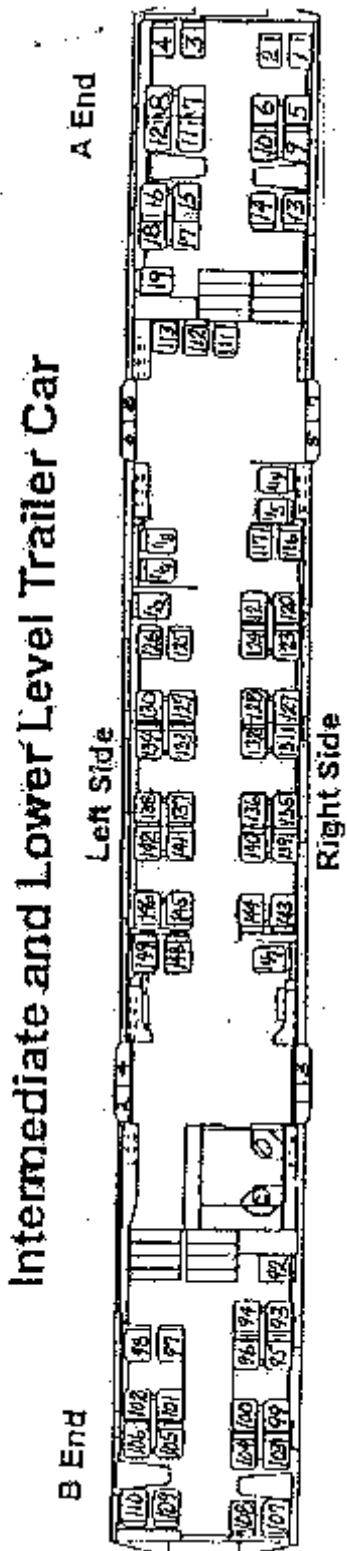
Seats from Bombardier BiLevel Passenger Rail Cars Contract 200



Workstation Table from Bombardier BiLevel Passenger Rail Cars Contract 200

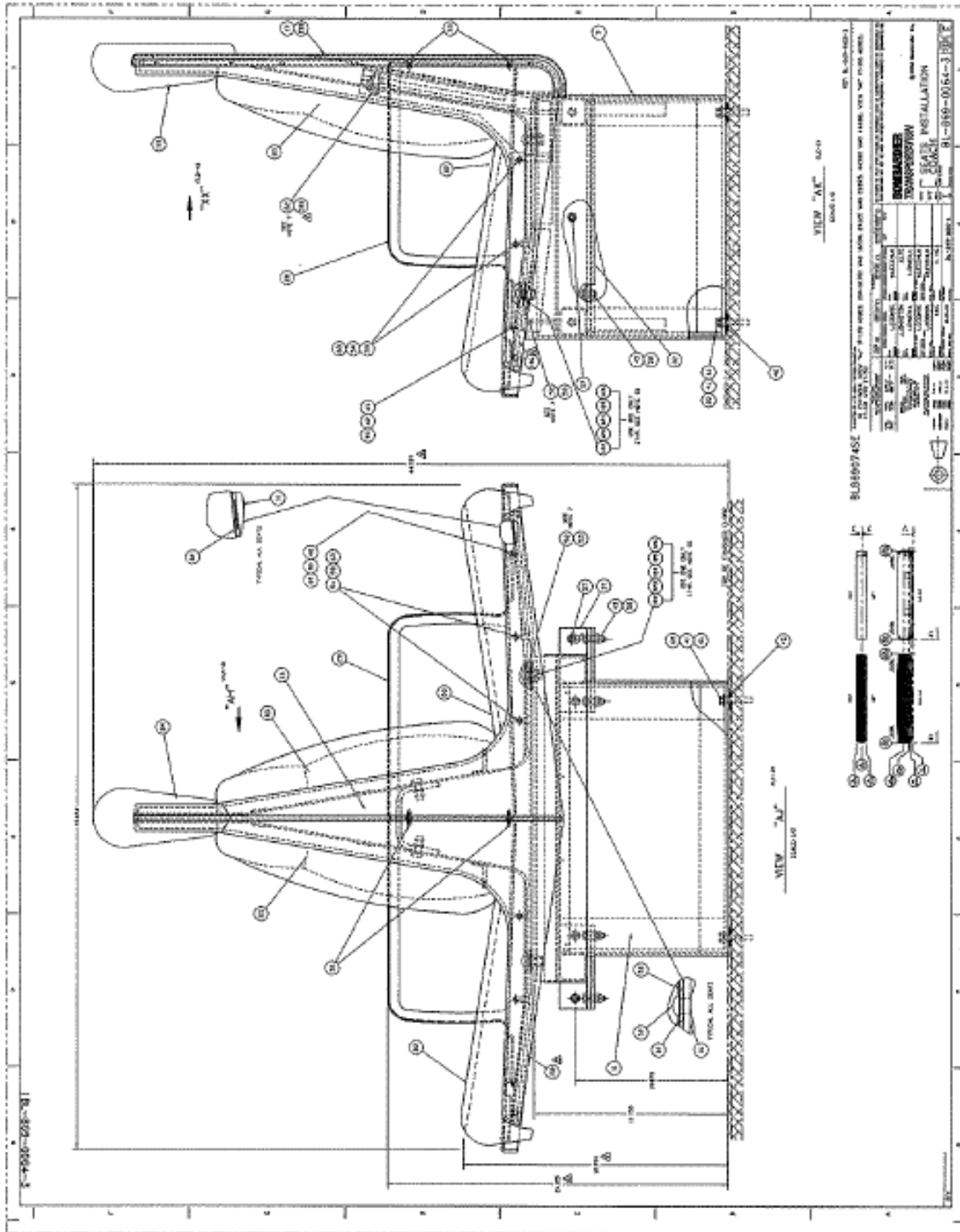


Seat numbering arrangement for the Contract 200 BiLevel Coach ¹⁴⁵



¹⁴⁵ source – Bombardier; data as supplied to the NTSB Placentia, CA, Accident Investigation

Seats from Bombardier BiLevel Passenger Rail Cars Contract 214



Workstation Table from Bombardier BiLevel Passenger Rail Cars Contract 214

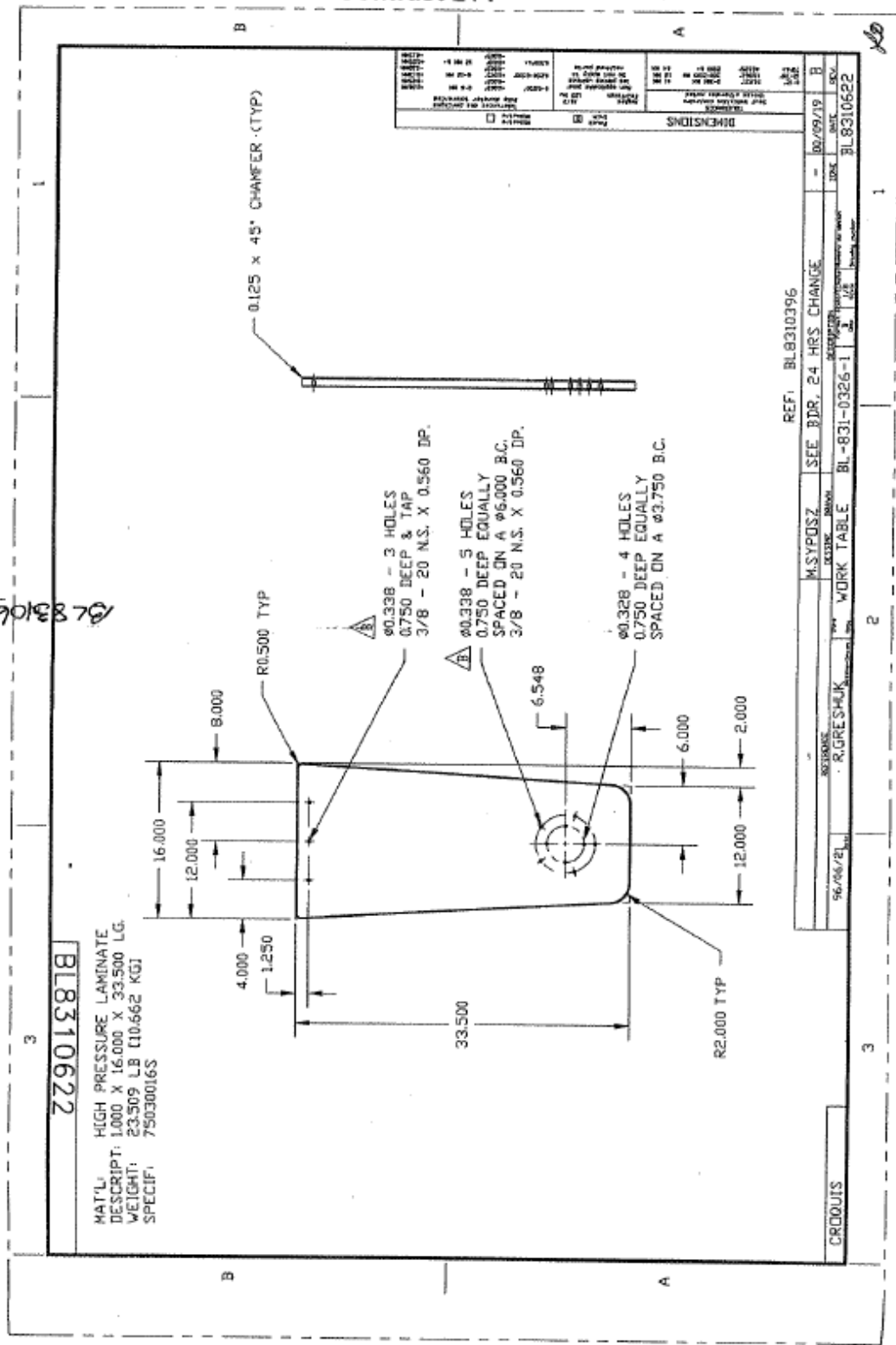
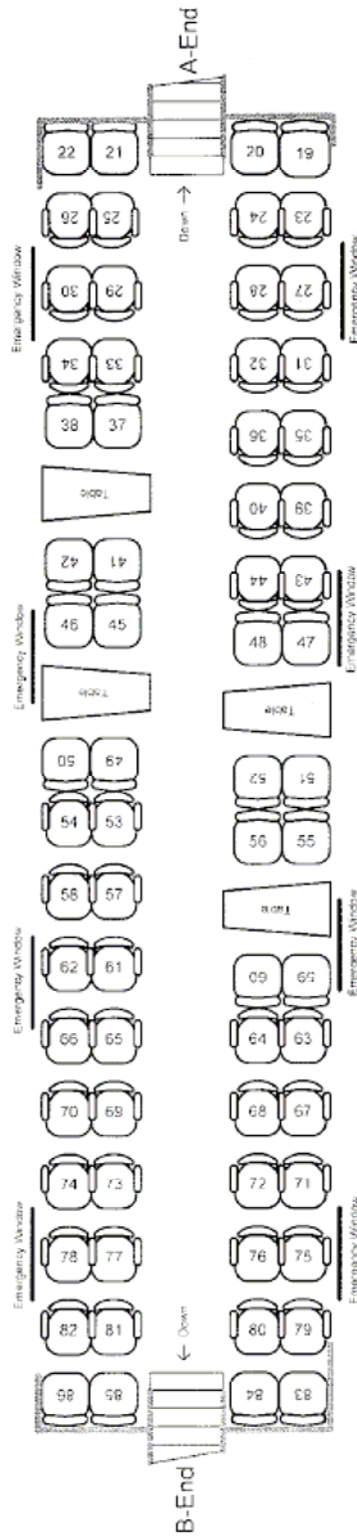


Exhibit III-C: 3rd GEN COACH CARS - UPPER LEVEL

Cars #183 - 210

68 Seats w/Fixed Armrests

LEFT SIDE



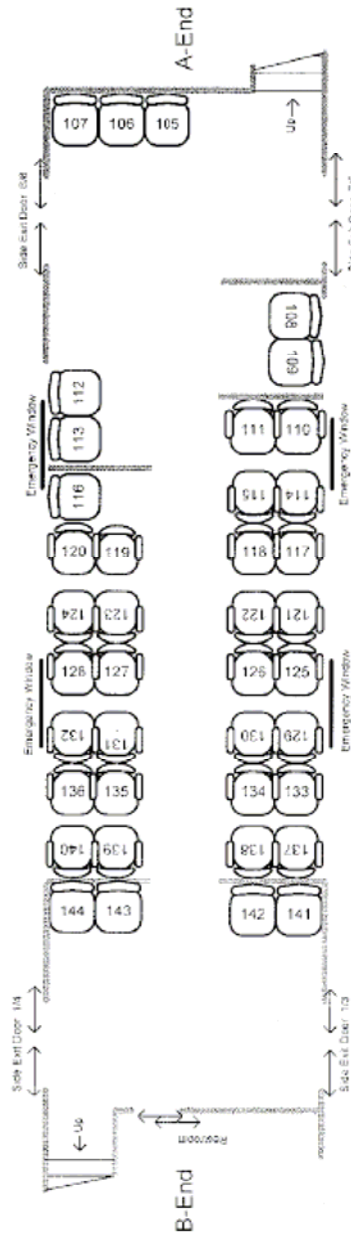
RIGHT SIDE

Note: Seat numbers to be oriented facing front of seats as illustrated

Exhibit III-A: 3rd GEN COACH CARS - LOWER LEVEL

Cars #183 - 210
40 Seats w/Fixed Armrests

LEFT SIDE



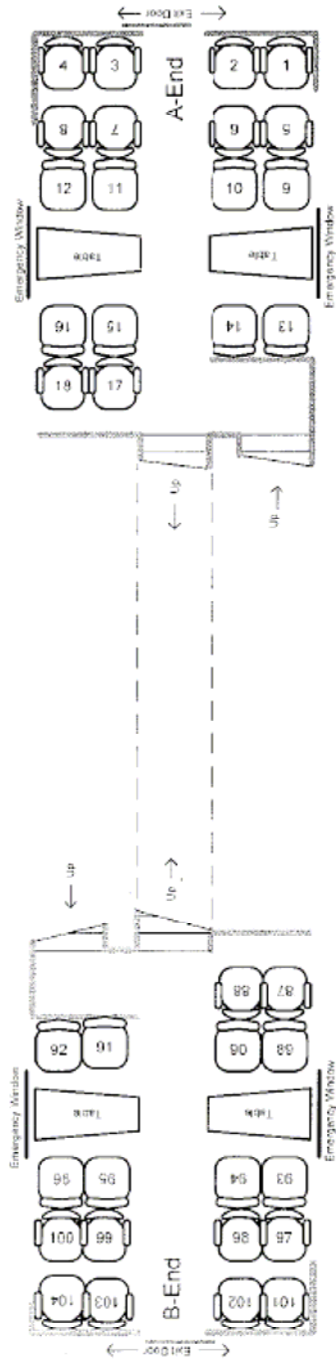
RIGHT SIDE

Note: Seat numbers to be oriented facing front of seats as illustrated

Exhibit III-B: 3rd GEN COACH CARS - MID-LEVEL

Cars #183 - 210
36 Seats w/Fixed Armrests

LEFT SIDE



RIGHT SIDE

Note: Seat numbers to be oriented facing front of seats as illustrated

-- End of Exhibit --