

# NATIONAL TRANSPORTATION SAFETY BOARD

Vehicle Recorder Division  
Washington, D.C. 20594

November 14, 2017

## Cockpit Display

**Specialist's Factual Report**  
**By Bill Tuccio, Ph.D.**

### 1. EVENT SUMMARY

Location: Methuen, Massachusetts  
Date: February 28, 2017  
Aircraft: Sonex  
Registration: N315AL  
Operator: Private  
NTSB Number: ERA17FA117

### 2. GROUP

A group was not convened.

### 3. DETAILS OF INVESTIGATION

The National Transportation Safety Board (NTSB) Vehicle Recorder Division received an instrument panel contained the following electronic device:

|                            |                                          |
|----------------------------|------------------------------------------|
| Device Manufacturer/Model: | <b>Infiniteq Xtreme-EFIS<sup>1</sup></b> |
| Serial Number:             | <b>Unknown</b>                           |

#### 3.1. Device Description

The Xtreme-EFIS is capable of displaying primary flight display information, navigation information, and, optionally, engine information. If enabled, the device is capable of recording 5 to 20 hours of data, depending on parameters selected for recording. All data is recorded 1 time per second to a removable, front-loaded SD card. The recorded data file, called "enigma.rec," is a fixed size of 10,000 bytes. When the allocated file space is filled, the oldest data is overwritten by the newest data.

---

<sup>1</sup> Other versions of this product were also made by MGL Avionics. EFIS is an acronym for Electronic Flight Instrument System.

### 3.2. Device Condition

The instrument panel was damaged by impact and heat damage. The Xtreme-EFIS was removed from the instrument panel, as shown in figure 1. The front-loaded SD card was not accessible due to heat damage, so the unit was disassembled, as shown in figure 2. The SD card was recovered, though the non-terminal side was fused to part of the Xtreme-EFIS assembly, as shown in figure 3.

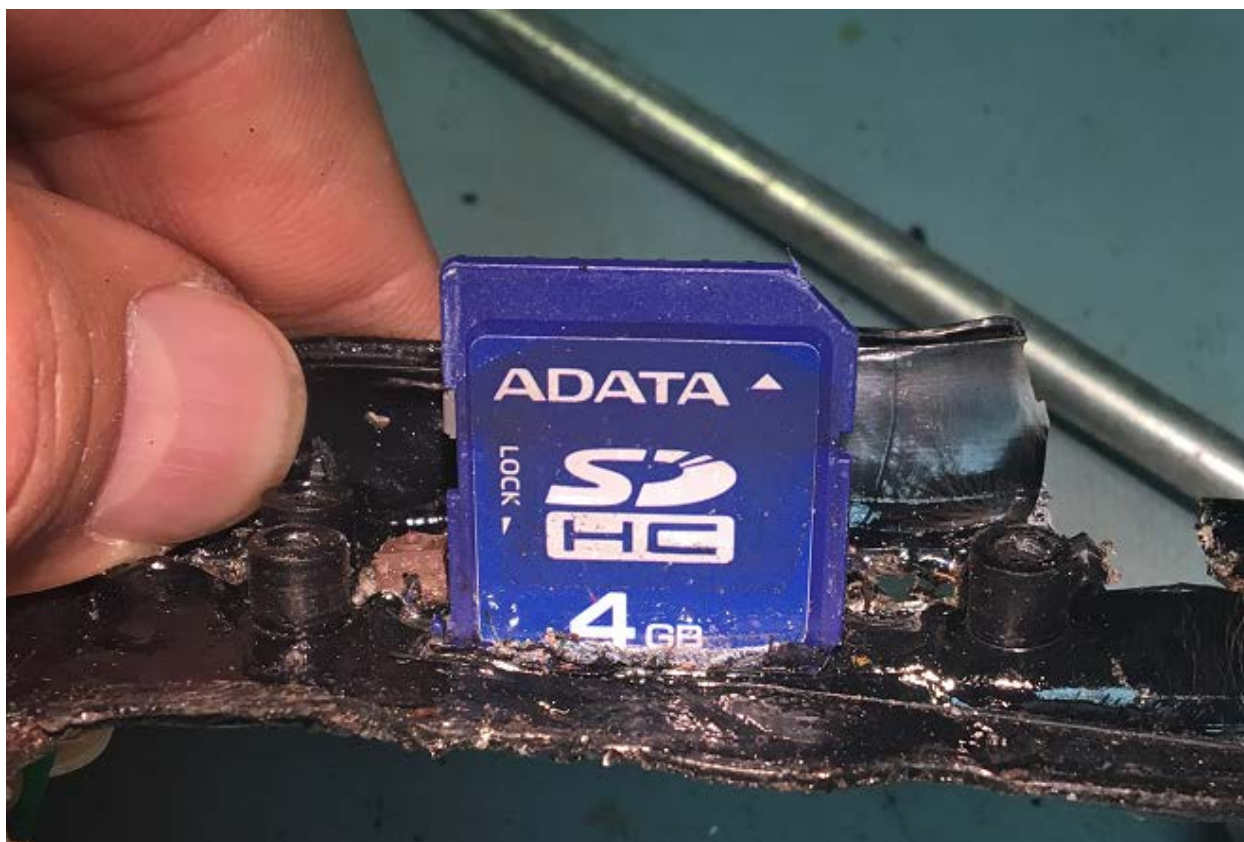
**Figure 1. Xtreme-EFIS, after removal from instrument panel.**



Figure 2. Disassembly to remove SD card.



Figure 3. SD Card removed from unit.



### 3.3. Data Description

The SD card was successfully read and the enigma.rec file was converted using the manufacturer's software. Only one file from February 5, 2016, was recovered and this file was consistent with a ground-only operation. No data pertinent to the investigation was recovered.