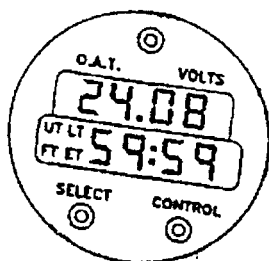


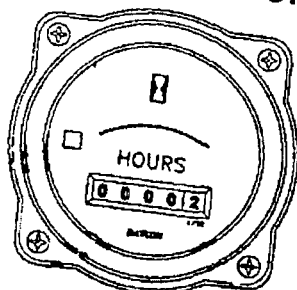
MISCELLANEOUS INSTRUMENTS

CLOCK/OAT/VOLTMETER



The Clock/Oat/Voltmeter is a multifunction indicator mounted in the upper left area of the instrument panel. A button located on the center top of the instrument changes the top display between OAT and Volts. The instrument defaults to the voltmeter reading. The lower half of the instrument displays Elapsed time, Local time, or Greenwich Mean Time.

ENGINE HOURMETER



The engine hourmeter is mounted in the nose compartment on the aft bulkhead. For the hourmeter to record time, the hourmeter circuit breaker must be in, the engine N_2 must be greater than 55% and the aircraft must be off the landing gear.

CAUTION AND WARNING SYSTEM

The caution and warning system includes the caution light panel, engine rpm sensor and warning horn, low rotor rpm sensor and warning horn, FADEC warning horn, associated components and interconnecting wiring.

CAUTION LIGHT PANEL

The caution light panel is a multisegmented panel energized by the 28 Vdc bus and protected by the 5 amp CAUTION LIGHTS circuit breaker. Each segmented indicator light is in series with its respective caution system.

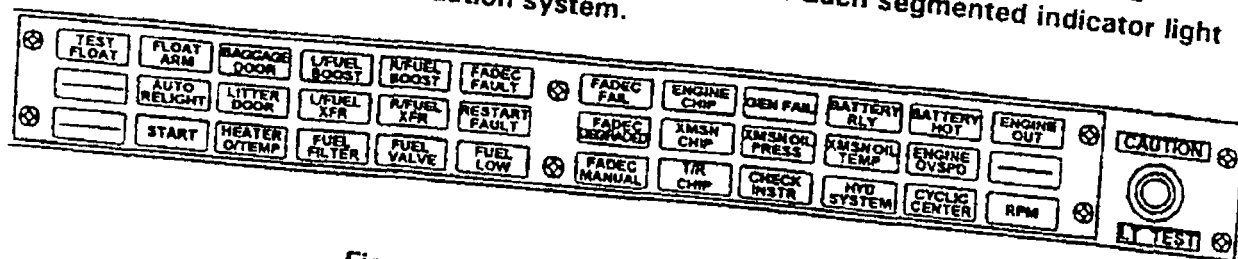


Figure 2-3. Caution Panel Segments

Warning/Caution	1	2	3	
Float Test	ns	ns	ns	ns= Not Stretched
Engine Fire	ns	ns	ns	s= Stretched
Engine Anti-Ice	b	ns	ns	b= Broken
Float Arm	ns	ns	ns	
Auto Relight	ns	ns	ns	
Start	ns	ns	ns	
Baggage Door	ns	ns	ns	
Litter Door	ns	ns	ns	
Heater Over Temp	ns	ns	ns	
L/Fuel Boost	ns	ns	ns	
L/Fuel XFR	ns	ns	ns	
Fuel Filter	ns	ns	ns	
R/Fuel Boost	ns	ns	ns	
R /Fuel XFR	ns	ns	ns	
Fuel Valve	ns	ns	ns	
FADEC Fault	ns	ns	ns	
Restart Fault	ns	ns	ns	
Fuel Low	ns	ns	ns	
FADEC Fail	ns	ns	ns	
FADEC Degraded	ns	ns	ns	
FADEC Manual	ns	ns	ns	
Engine Chip	ns	ns	ns	
XMSM Chip	ns	ns	ns	
T/R Chip	ns	ns	ns	
Gen Fail	s	s	s	
XMSN Oil Press	ns	ns	ns	
Check Instr	ns	ns	ns	
Battery Relay	ns	ns	ns	
XMSN Oil Temp	ns	ns	ns	
Hydraulic System	ns	ns	ns	
Battery Hot	ns	ns	ns	
Engine Ovspd	ns	ns	ns	
Cyclic Centering	ns	ns	ns	
Engine Out	ns	ns	ns	
Pedal Stop	ns	ns	ns	
RPM	ns	ns	ns	