

P.G. & E.

CONSTRUCTION ACCOUNTING DEPARTMENT

MAY 1989

JOB NO. 54701843

ANALYSIS JOB COST REPORT

DIV. 2 - SAN FRANCISCO

DEPARTMENT WATER

DESCRIPTION TRANSMISSION MAIN GENERAL

ASSIGNED TO

FUNCTION INVALID

BILLING NONE

ANALYST

RELATED JOB NO. NONE

D & C NUMBER NONE

DATE CLOSED

ADC INDICATOR OFF

RULE NO. NONE

START DATE 11/07/88

MLX NUMBER NONE

LIC. PROJECT NO. NONE

OPER. DATE 11/25/88

BASIC BUS FUNC 03

PIN GD 02 21 PHASE P

COMP. DATE 11/25/88

COORDINATOR RC 02 693

PROGRAM - 3

-AUTHORIZED DIRECT BY YEAR-  
YEAR

AUTHORIZED  
15,365

YEAR 88

ACTUAL  
12,243.99

AUTHORIZED

ACTUAL

AUTHORIZED

YEAR

ACTUAL

AUTHORIZED YEAR

ACTUAL

AUTHORIZED YEARS REMAINING

ACTUAL  
2,523.50

JOB COMPARISONS

	ESTIMATED	ACTUAL	DIFFERENCE	PCT. VARIANCE	
CAPITAL	.00	2,911.23	2,911.23-0	.0	OVERRUN
REMOVAL	.00	.00	.00 0	.0	
MEMO M & O	15,365.00	11,856.26	3,508.74 0	22.8	UNDERRUN
AUTHORIZED DIRECT	15,365.00 *	14,767.49 *	597.51 *	3.8 *	UNDERRUN
INDIRECTS & OVERHEADS	6,830.00	6,112.64			
GROSS FIN.	22,195.00 **	20,880.13 **	1,314.87 **	5.9 **	UNDERRUN
O.C.I.		.00			
SALVAGE	.00	.00	.00		
CREDITS NOT INCLUDED					
IN AMOUNT AUTHORIZED		.00			
MANDAYS	62	100	38-	61.2-	OVERRUN

LABOR CHARGES DURING FOLLOWING MONTH -88- 0 N D-89- 3 4

R228JA CONTROL SEQUENCE NO. 40,488 SHEET NO. 1 SOURCE DOC. NO. 0234G91721

JOB NO. 54701843

P.G. & E.

CONSTRUCTION ACCOUNTING DEPARTMENT

MAY 1989

JOB NO. 54701843

ANALYSIS JOB COST REPORT

DIV. 2 - SAN FRANCISCO

CAPITAL  
ADC INDICATOR OFF

ACCOUNT 1124 - MAINS  
LOCATION 101-MAIN 0101

SUB-ACCT 24-24 IN MAIN INST COMPLETE

COST ELEMENT	DESCRIPTION	YEAR	AMOUNT	QUANTITY CHARGED	QUANTITY INSTALLED	QUANTITY DIFFERENCE	DETAIL ACTIVITY YEAR & MONTH
066	MAJOR CONTRACT-OTHER		210.00	0		-88-	D
226	ADMV & GENERAL EXPENSE		24.75	0		-88-	D
227	GENERAL ENGRNG EXPENSE		3.64	0		-88-	D
698	MISCL & UNCLASS MATERIAL		154.00	0		-88-	D
SUB-TOTAL-DIRECT			364.00 *				
SUB-TOTAL-DIRECT-INDIR-OVHDS			392.39 *				
196 PLANT ADDITIONS-COMP GEN 000970000			392.39-				
BALANCE			.00 *				
AUTHORIZED DIRECT			.00 *		ESTIMATED MANHOURS		0 *

P.G. & E.

CONSTRUCTION ACCOUNTING DEPARTMENT

MAY 1989

JOB NO. 54701843

ANALYSIS JOB COST REPORT

DIV. 2 - SAN FRANCISCO

CAPITAL  
ADC INDICATOR OFF

ACCOUNT 1124 - MAINS  
LOCATION 132-MAIN 0132

SUB-ACCT 30-30 IN MAIN INST COMPLETE

COST ELEMENT	DESCRIPTION	YEAR	AMOUNT	QUANTITY CHARGED	QUANTITY INSTALLED	QUANTITY DIFFERENCE	DETAIL ACTIVITY YEAR & MONTH
006	PHYSICAL ST TIME		385.08	20		-88-	N
052	CONST EQUIP USE-GEN CONS		260.00	20		-88-	N
091	G.C. PER DIEM ALLOWANCE		20.16	20		-88-	N
220	TOOL EXPENSE-GEN CONST		7.16	0		-88-	N
222	GEN. CONST. SUPERVISION		35.81	0		-88-	N
223	G.C. FIELD SUPERVISION		31.04	0		-88-	N
226	ADMV & GENERAL EXPENSE		72.64	0		-88-	N
227	GENERAL ENGRNG EXPENSE		10.38	0		-88-	N
229	NON-PRODUCTIVE TIME-GC		92.42	0		-88-	N
231	P/R ADDT-PEN/SFP-GC		135.37	0		-88-	N
452	P/R ADDT-TAXES GC		53.81	0		-88-	N
495	MEAL EXPENSES		16.92	3		-88-	N
617	GENERAL HARDWARE		9.88	0		-89-	1
SUB-TOTAL-DIRECT			432.04			✕	
SUB-TOTAL-DIRECT-INDIR-OVHDS			1,130.67			✕	
196 PLANT ADDITIONS-COMP GEN 000970000			1,130.67-				
BALANCE			.00			✕	
AUTHORIZED DIRECT			.00	ESTIMATED MANHOURS		0	✕

P.G. & E.

CONSTRUCTION ACCOUNTING DEPARTMENT

MAY 1989

JOB NO. 54701843

ANALYSIS JOB COST REPORT

DIV. 2 - SAN FRANCISCO

CAPITAL  
ADC INDICATOR OFF

ACCOUNT 1224 - MAINS

COST ELEMENT	DESCRIPTION	YEAR	AMOUNT	QUANTITY CHARGED	QUANTITY INSTALLED	QUANTITY DIFFERENCE	DETAIL ACTIVITY YEAR & MONTH
006	PHYSICAL ST TIME		1,273.45	72		-88-	N
007	PHYSICAL OVERTIME		654.13	23		-88-	N
050	CONST EQUIP USE-REGIONS		453.00	54		-88-	N
216	TOOL EXPENSE-REGIONAL		110.39	0		-88-	N
218	SUP & ENG-TRSF TO CONST		927.25	0		-88-	N
219	REGIONAL A & G EXPENSES		242.85	0		-88-	N
226	ADMV & GENERAL EXPENSE		342.20	0		-88-	N
227	GENERAL ENGRNG EXPENSE		48.89	0		-88-	N
228	NON-PRODUCTIVE TIME-REGN		280.16	0		-88-	N
230	P/R ADDT-PEN/SFP-REGN-GO		625.90	0		-88-	N
451	P/R ADDT-TAXES REGN-GO		248.81	0		-88-	N
469	MEAL ALLOWANCE		56.00	5		-88-	N
490	MEALS&LODGING-OTHERS		16.55	3		-88-	N
SUB-TOTAL-DIRECT			2,000.13 *				
SUB-TOTAL-DIRECT-INDIR-OVHDS			5,279.58 *				
196 PLANT ADDITIONS-COMP GEN 000970000			5,279.58-				
BALANCE			.00 *				
AUTHORIZED DIRECT			.00 *		ESTIMATED MANHOURS		0 *

P.G. & E.

CONSTRUCTION ACCOUNTING DEPARTMENT

MAY 1989

JOB NO. 54701843

ANALYSIS JOB COST REPORT

DIV. 2 - SAN FRANCISCO

CAPITAL  
ADC INDICATOR OFF

ACCOUNT 1224 - MAINS

SUB-ACCT 30-30 IN MAIN INST COMPLETE

COST ELEMENT	DESCRIPTION	YEAR	AMOUNT	QUANTITY CHARGED	QUANTITY INSTALLED	QUANTITY DIFFERENCE	DETAIL ACTIVITY YEAR & MONTH
462	MISCL MEETING EXPENSES		115.06	0		-88- D	
	SUB-TOTAL-DIRECT		115.06 *				
	SUB-TOTAL-DIRECT-INDIR-OVHDS		115.06 *				
196	PLANT ADDITIONS-COMP GEN 000970000		115.06-				
	BALANCE		.00 *				
	AUTHORIZED DIRECT		.00 *		ESTIMATED MANHOURS		0 *

P.G. & E.

CONSTRUCTION ACCOUNTING DEPARTMENT

MAY 1989

JOB NO. 54701843

ANALYSIS JOB COST REPORT

DIV. 22 - GENERAL OFFICE

CAPITAL  
ADC INDICATOR OFF

ACCOUNT 1224 - MAINS

COST ELEMENT	DESCRIPTION	YEAR	AMOUNT	QUANTITY CHARGED	QUANTITY INSTALLED	QUANTITY DIFFERENCE	DETAIL ACTIVITY YEAR & MONTH
617	GENERAL HARDWARE		.00	0		-88- D-89- 1	
	SUB-TOTAL-DIRECT		.00 ✕				
	BALANCE		.00 ✕				
	AUTHORIZED DIRECT		.00 ✕		ESTIMATED MANHOURS		0 ✕

P.G. & E.

CONSTRUCTION ACCOUNTING DEPARTMENT

MAY 1989

JOB NO. 54701843

ANALYSIS JOB COST REPORT

DIV. 22 - GENERAL OFFICE

CAPITAL  
ADC INDICATOR OFF

ACCOUNT 1224 - MAINS

SUB-ACCT 30-30 IN MAIN INST COMPLETE

COST ELEMENT	DESCRIPTION	YEAR	AMOUNT	QUANTITY CHARGED	QUANTITY INSTALLED	QUANTITY DIFFERENCE	DETAIL ACTIVITY YEAR & MONTH
	462 MISCL MEETING EXPENSES		.00	0		-88- N D	
	SUB-TOTAL-DIRECT		.00 ✕				
	BALANCE		.00 ✕				
	AUTHORIZED DIRECT		.00 ✕		ESTIMATED MANHOURS		0 ✕

P.G. & E.

CONSTRUCTION ACCOUNTING DEPARTMENT

MAY 1989

JOB NO. 54701843

ANALYSIS JOB COST REPORT

DIV. 2 - SAN FRANCISCO

MEMO M&O

ACCOUNT 1502 - MAINTENANCE OF MAINS

SUB-ACCT 11-REPAIR LEAKS

COST ELEMENT	DESCRIPTION	YEAR	AMOUNT	QUANTITY CHARGED	QUANTITY INSTALLED	QUANTITY DIFFERENCE	DETAIL ACTIVITY YEAR & MONTH
233	STORES EXPENSE-ASSESSED		28.49	0		-88- N D	
398	GAS MINOR MTL - ALLOC		5.61	0		-88- N D	
SUB-TOTAL-DIRECT			.00 *				
BALANCE			34.10 *				
AUTHORIZED DIRECT			8,490.00 *		ESTIMATED MANHOURS		176 *



JOB NO. 54701843

ANALYSIS JOB COST REPORT

DIV. 2 - SAN FRANCISCO

MEMO M&O

ACCOUNT 1502 - MAINTENANCE OF MAINS

ACTIVITY 3664 REPAIR LINES-GAS

SUB-ACCT 11-REPAIR LEAKS  
SUBACTIV 2040 REPAIR TRANS LINES

COST ELEMENT	DESCRIPTION	YEAR	AMOUNT	QUANTITY CHARGED	QUANTITY INSTALLED	QUANTITY DIFFERENCE	DETAIL ACTIVITY YEAR & MONTH
870250	FTG FLANGED	SP	134.19	1		-88- N D	
875699	MISC MATERIAL		150.68	0		-88- N	
393	X-RAY INSPECTION		1,559.50	0		-89- 1	
617	GENERAL HARDWARE		8.04	0		-88- D	
646	AUTOMOTIVE EQUIP & PARTS		97.77	0		-88- N	
SUB-TOTAL-DIRECT			1,950.18 *				
BALANCE			1,950.18 *				
AUTHORIZED DIRECT			.00 *	ESTIMATED MANHOURS			0 *

P.G. & E.

CONSTRUCTION ACCOUNTING DEPARTMENT

MAY 1989

JOB NO. 54701843

ANALYSIS JOB COST REPORT

DIV. 2 - SAN FRANCISCO

MEMO M&O

ACCOUNT 1502 - MAINTENANCE OF MAINS  
LOCATION 132-MAIN 0132

COST ELEMENT	DESCRIPTION	YEAR	AMOUNT	QUANTITY CHARGED	QUANTITY INSTALLED	QUANTITY DIFFERENCE	DETAIL ACTIVITY YEAR & MONTH
220	TOOL EXPENSE-GEN CONST		.86	0		-88- N	
222	GEN. CONST. SUPERVISION		4.32	0		-88- N	
223	G.C. FIELD SUPERVISION		3.74	0		-88- N	
229	NON-PRODUCTIVE TIME-GC		9.60	0		-88- N	
SUB-TOTAL-DIRECT			.00 *				
BALANCE			18.52 *				
AUTHORIZED DIRECT			.00 *		ESTIMATED MANHOURS		0 *

P.G. & E.

CONSTRUCTION ACCOUNTING DEPARTMENT

MAY 1989

JOB NO. 54701843

ANALYSIS JOB COST REPORT

DIV. 2 - SAN FRANCISCO

MEMO M&O

ACCOUNT 1502 - MAINTENANCE OF MAINS  
LOCATION 132-MAIN 0132  
ACTIVITY 3664 REPAIR LINES-GAS

COST ELEMENT	DESCRIPTION	YEAR	AMOUNT	QUANTITY CHARGED	QUANTITY INSTALLED	QUANTITY DIFFERENCE	DETAIL ACTIVITY YEAR & MONTH
006	PHYSICAL ST TIME		40.00	0		-88-	N
007	PHYSICAL OVERTIME		8.00	0		-88-	N
052	CONST EQUIP USE-GEN CONS		2.00	0		-88-	N
091	G.C. PER DIEM ALLOWANCE		7.00	0		-88-	N
SUB-TOTAL-DIRECT			55.00 ✕				
BALANCE			57.00 ✕				
AUTHORIZED DIRECT			.00 ✕		ESTIMATED MANHOURS		0 ✕

P.G. & E.

CONSTRUCTION ACCOUNTING DEPARTMENT

MAY 1989

JOB NO. 54701843

ANALYSIS JOB COST REPORT

DIV. 2 - SAN FRANCISCO

MEMO M&O

ACCOUNT 1502 - MAINTENANCE OF MAINS  
LOCATION 132-MAIN 0132

SUB-ACCT 11-REPAIR LEAKS

COST ELEMENT	DESCRIPTION	YEAR	AMOUNT	QUANTITY CHARGED	QUANTITY INSTALLED	QUANTITY DIFFERENCE	DETAIL ACTIVITY YEAR & MONTH
216	TOOL EXPENSE-REGIONAL		34.65	0		-88- 0	
219	REGIONAL A & G EXPENSES		54.44	0		-88- 0	
220	TOOL EXPENSE-GEN CONST		8.56	0		-88- N	
222	GEN. CONST. SUPERVISION		42.78	0		-88- N	
223	G.C. FIELD SUPERVISION		37.07	0		-88- N	
228	NON-PRODUCTIVE TIME-REGN		82.49	0		-88- 0	
229	NON-PRODUCTIVE TIME-GC		110.38	0		-88- N	
233	STORES EXPENSE-ASSESSED		475.89	0		-88- N D	
398	GAS MINOR MTL - ALLOC		87.30	0		-88- N D	
SUB-TOTAL-DIRECT			.00	✕			
BALANCE			933.56	✕			
AUTHORIZED DIRECT			.00	✕	ESTIMATED MANHOURS		0 ✕

P.G. & E.

CONSTRUCTION ACCOUNTING DEPARTMENT

MAY 1989

JOB NO. 54701843

ANALYSIS JOB COST REPORT

DIV. 2 - SAN FRANCISCO

MEMO M&O

ACCOUNT 1502 - MAINTENANCE OF MAINS  
LOCATION 132-MAIN 0132  
ACTIVITY 3664 REPAIR LINES-GAS

SUB-ACCT 11-REPAIR LEAKS  
SUBACTIV 2040 REPAIR TRANS LINES

COST ELEMENT	DESCRIPTION	YEAR	AMOUNT	QUANTITY CHARGED	QUANTITY INSTALLED	QUANTITY DIFFERENCE	DETAIL ACTIVITY YEAR & MONTH
010501	PIPE STEEL 30" OD FT		4,224.62	40		-88-	N
490059	NITROGEN PURE ES 32-71CF		177.84	2,964		-88-	D
875699	MISC MATERIAL		281.13	0		-88-	D
006	PHYSICAL ST TIME		569.40	32		-88-	O N
019	MGMT/PROF ST TIME		302.96	16		-88-	N
046	MILEAGE-GENERAL CONST		43.80	73		-88-	N
050	CONST EQUIP USE-REGIONS		120.00	16		-88-	O
067	FREIGHT		199.40	0		-88-	N
077	LANDSCAPING		964.00	0		-89-	1
091	G.C. PER DIEM ALLOWANCE		24.92	8		-88-	N
SUB-TOTAL-DIRECT			6,744.27 *				
BALANCE			6,908.07 *				
AUTHORIZED DIRECT			.00 *	ESTIMATED MANHOURS			0 *

P.G. & E.

CONSTRUCTION ACCOUNTING DEPARTMENT

MAY 1989

JOB NO. 54701843

ANALYSIS JOB COST REPORT

DIV. 22 - GENERAL OFFICE

MEMO M&O

ACCOUNT 1502 - MAINTENANCE OF MAINS

ACTIVITY 3654 MAINT OF LINES OTHER-GAS

SUB-ACCT 6-REPAIR PIPE COATING  
SUBACTIV 2040 MAINTAIN TRANS MAINS

COST ELEMENT	DESCRIPTION	YEAR	AMOUNT	QUANTITY CHARGED	QUANTITY INSTALLED	QUANTITY DIFFERENCE	DETAIL ACTIVITY YEAR & MONTH
011485	PIPE STEEL 30" OD	FT	723.61	12		-88- N	
	SUB-TOTAL-DIRECT		723.61 *				
	BALANCE		723.61 *				
	AUTHORIZED DIRECT		.00 *		ESTIMATED MANHOURS		0 *

P.G. & E.

CONSTRUCTION ACCOUNTING DEPARTMENT

MAY 1989

JOB NO. 54701843

ANALYSIS JOB COST REPORT

DIV. 2 - SAN FRANCISCO

MEMO M&O

ACCOUNT 1602 - MAINS LEAK CLAMPS  
LOCATION 132-MAIN 0132

COST ELEMENT	DESCRIPTION	YEAR	AMOUNT	QUANTITY CHARGED	QUANTITY INSTALLED	QUANTITY DIFFERENCE	DETAIL ACTIVITY YEAR & MONTH
220	TOOL EXPENSE-GEN CONST		2.62	0		-88- N	
222	GEN. CONST. SUPERVISION		13.08	0		-88- N	
223	G.C. FIELD SUPERVISION		11.33	0		-88- N	
229	NON-PRODUCTIVE TIME-GC		29.28	0		-88- N	
SUB-TOTAL-DIRECT			.00 *				
BALANCE			56.31 *				
AUTHORIZED DIRECT			.00 *		ESTIMATED MANHOURS		0 *

P.G. & E.

CONSTRUCTION ACCOUNTING DEPARTMENT

MAY 1989

JOB NO. 54701843

ANALYSIS JOB COST REPORT

DIV. 2 - SAN FRANCISCO

MEMO M&O

ACCOUNT 1602 - MAINS LEAK CLAMPS  
LOCATION 132-MAIN 0132  
ACTIVITY 3664 REPAIR LINES-GAS

COST ELEMENT	DESCRIPTION	YEAR	AMOUNT	QUANTITY CHARGED	QUANTITY INSTALLED	QUANTITY DIFFERENCE	DETAIL ACTIVITY YEAR & MONTH
006	PHYSICAL ST TIME		122.00	5		-88-	N
007	PHYSICAL OVERTIME		23.00	0		-88-	N
052	CONST EQUIP USE-GEN CONS		6.00	2		-88-	N
091	G.C. PER DIEM ALLOWANCE		21.00	4		-88-	N
SUB-TOTAL-DIRECT			166.00 *				
BALANCE			172.00 *				
AUTHORIZED DIRECT			.00 *		ESTIMATED MANHOURS		0 *



P.G. & E.

CONSTRUCTION ACCOUNTING DEPARTMENT

MAY 1989

JOB NO. 54701843

ANALYSIS JOB COST REPORT

DIV. 2 - SAN FRANCISCO

MEMO M&O

ACCOUNT 1603 - MAINS OTHER  
LOCATION 132-MAIN 0132

COST ELEMENT	DESCRIPTION	YEAR	AMOUNT	QUANTITY CHARGED	QUANTITY INSTALLED	QUANTITY DIFFERENCE	DETAIL ACTIVITY YEAR & MONTH
220	TOOL EXPENSE-GEN CONST		8.74	0		-88-	N
222	GEN. CONST. SUPERVISION		43.70	0		-88-	N
223	G.C. FIELD SUPERVISION		37.87	0		-88-	N
229	NON-PRODUCTIVE TIME-GC		97.07	0		-88-	N
SUB-TOTAL-DIRECT			.00			*	
BALANCE			187.38			*	
AUTHORIZED DIRECT			.00	ESTIMATED MANHOURS		0 *	

JOB NO. 54701843

ANALYSIS JOB COST REPORT

DIV. 2 - SAN FRANCISCO

MEMO M&O

ACCOUNT 1603 - MAINS OTHER  
 LOCATION 132-MAIN 0132  
 ACTIVITY 3664 REPAIR LINES-GAS

COST ELEMENT	DESCRIPTION	YEAR	AMOUNT	QUANTITY CHARGED	QUANTITY INSTALLED	QUANTITY DIFFERENCE	DETAIL ACTIVITY YEAR & MONTH
006	PHYSICAL ST TIME		404.47	25		-88-	N
007	PHYSICAL OVERTIME		81.04	5		-88-	N
052	CONST EQUIP USE-GEN CONS		17.00	6		-88-	N
091	G.C. PER DIEM ALLOWANCE		64.04	20		-88-	N
SUB-TOTAL-DIRECT			549.55 *				
BALANCE			566.55 *				
AUTHORIZED DIRECT			.00 *		ESTIMATED MANHOURS		0 *

P.G. & E.

CONSTRUCTION ACCOUNTING DEPARTMENT

MAY 1989

JOB NO. 54701843

ANALYSIS JOB COST REPORT

DIV. 2 - SAN FRANCISCO

MEMO M&O

ACCOUNT 1607 - SERVICES  
LOCATION 132-MAIN 0132

COST ELEMENT	DESCRIPTION	YEAR	AMOUNT	QUANTITY CHARGED	QUANTITY INSTALLED	QUANTITY DIFFERENCE	DETAIL ACTIVITY YEAR & MONTH
220	TOOL EXPENSE-GEN CONST		5.24	0		-88-	N
222	GEN. CONST. SUPERVISION		26.19	0		-88-	N
223	G.C. FIELD SUPERVISION		22.70	0		-88-	N
229	NON-PRODUCTIVE TIME-GC		58.08	0		-88-	N
SUB-TOTAL-DIRECT			.00	✕			
BALANCE			112.21	✕			
AUTHORIZED DIRECT			.00	✕	ESTIMATED MANHOURS		0 ✕

P.G. & E.

CONSTRUCTION ACCOUNTING DEPARTMENT

MAY 1989

JOB NO. 54701843

ANALYSIS JOB COST REPORT

DIV. 2 - SAN FRANCISCO

MEMO M&O

ACCOUNT 1607 - SERVICES  
LOCATION 132-MAIN 0132  
ACTIVITY 3664 REPAIR LINES-GAS

COST ELEMENT	DESCRIPTION	YEAR	AMOUNT	QUANTITY CHARGED	QUANTITY INSTALLED	QUANTITY DIFFERENCE	DETAIL ACTIVITY YEAR & MONTH
006	PHYSICAL ST TIME		242.00	10		-88-	N
007	PHYSICAL OVERTIME		49.00	0		-88-	N
052	CONST EQUIP USE-GEN CONS		11.00	4		-88-	N
091	G.C. PER DIEM ALLOWANCE		39.00	8		-88-	N
SUB-TOTAL-DIRECT			330.00 *				
BALANCE			341.00 *				
AUTHORIZED DIRECT			.00 *	ESTIMATED MANHOURS			0 *

P.G. & E.

CONSTRUCTION ACCOUNTING DEPARTMENT

MAY 1989

JOB NO. 54701843

ANALYSIS JOB COST REPORT

DIV. 2 - SAN FRANCISCO

MEMO M&O

ACCOUNT 1855 - MAINS EXPENSES

COST ELEMENT	DESCRIPTION	YEAR	AMOUNT	QUANTITY	QUANTITY	QUANTITY	DETAIL ACTIVITY YEAR & MONTH
				CHARGED	INSTALLED	DIFFERENCE	
	AUTHORIZED DIRECT		6,875.00 *		ESTIMATED MANHOURS		320 *

P.G. & E.

CONSTRUCTION ACCOUNTING DEPARTMENT

MAY 1989

JOB NO. 54701843

ANALYSIS JOB COST REPORT

DIV. 2 - SAN FRANCISCO

MEMO M&O

ACCOUNT 1855 - MAINS EXPENSES  
LOCATION 132-MAIN 0132

COST ELEMENT	DESCRIPTION	YEAR	AMOUNT	QUANTITY CHARGED	QUANTITY INSTALLED	QUANTITY DIFFERENCE	DETAIL ACTIVITY YEAR & MONTH
216	TOOL EXPENSE-REGIONAL		76.26	0		-88- N	
219	REGIONAL A & G EXPENSES		167.78	0		-88- N	
228	NON-PRODUCTIVE TIME-REGN		201.60	0		-88- N	
SUB-TOTAL-DIRECT			.00 *				
BALANCE			445.64 *				
AUTHORIZED DIRECT			.00 *	ESTIMATED MANHOURS			0 *

JOB NO. 54701843

ANALYSIS JOB COST REPORT

DIV. 2 - SAN FRANCISCO

MEMO M&O

ACCOUNT 1855 - MAINS EXPENSES

LOCATION 132-MAIN 0132

ACTIVITY 3475 LINE OPERATION-OTHER-GAS

SUBACTIV 6034 TRANS MAIN EXPENSE

COST ELEMENT	DESCRIPTION	YEAR	AMOUNT	QUANTITY CHARGED	QUANTITY INSTALLED	QUANTITY DIFFERENCE	DETAIL ACTIVITY YEAR & MONTH
006	PHYSICAL ST TIME		916.38	56		-88-	N
007	PHYSICAL OVERTIME		407.27	15		-88-	N
044	MILEAGE-REGIONS		23.65	55		-88-	N
050	CONST EQUIP USE-REGIONS		95.00	19		-88-	N
469	MEAL ALLOWANCE		14.00	1		-88-	N
SUB-TOTAL-DIRECT			1,337.65 *				
BALANCE			1,456.30 *				
AUTHORIZED DIRECT			.00 *		ESTIMATED MANHOURS		0 *

JOB NO. 54701843

ANALYSIS JOB COST REPORT

DIV. 3 - GENERAL CONSTRUCTION

MEMO OTHER COSTS

ACCOUNT 8026 - GC ADMN.&GEN EXP-OFFICE  
ACTIVITY 6190 MGMT & SUPERVISION

COST ELEMENT	DESCRIPTION	YEAR	AMOUNT	QUANTITY CHARGED	QUANTITY INSTALLED	QUANTITY DIFFERENCE	DETAIL ACTIVITY YEAR & MONTH
021	MGMT/PROF OVERTIME		272.50	10		-88- D	
046	MILEAGE-GENERAL CONST		60.00	100		-88- D	
SUB-TOTAL-DIRECT			272.50 *				
BALANCE			332.50 *				
AUTHORIZED DIRECT			.00 *		ESTIMATED MANHOURS		0 *



P.G. & E.

CONSTRUCTION ACCOUNTING DEPARTMENT

MAY 1989

JOB NO. 54701843

ANALYSIS JOB COST REPORT

DIV. 22 - GENERAL OFFICE

MEMO OTHER COSTS

ACCOUNT 9202 - SALARIES-GEN OFC EMPLS

SUB-ACCT 12-ENGINEERING

COST ELEMENT	DESCRIPTION	YEAR	AMOUNT	QUANTITY CHARGED	QUANTITY INSTALLED	QUANTITY DIFFERENCE	DETAIL ACTIVITY YEAR & MONTH
222	GEN. CONST. SUPERVISION		1,126.07	0		-88-	N D-89- 3 4
223	G.C. FIELD SUPERVISION		1,036.98	0		-88-	N D-89- 3 4
229	NON-PRODUCTIVE TIME-GC		1,787.46	0		-88-	N D-89- 3 4
SUB-TOTAL-DIRECT			.00	✕			
BALANCE			3,950.51	✕			
AUTHORIZED DIRECT			.00	✕	ESTIMATED MANHOURS		0 ✕

P.G. & E.

CONSTRUCTION ACCOUNTING DEPARTMENT

MAY 1989

JOB NO. 54701843

ANALYSIS JOB COST REPORT

DIV. 22 - GENERAL OFFICE

MEMO OTHER COSTS

ACCOUNT 9202 - SALARIES-GEN OFC EMPLS

SUB-ACCT 12-ENGINEERING

ACTIVITY 3124 ENG STUDIES -ELEC OPER

COST ELEMENT	DESCRIPTION	YEAR	AMOUNT	QUANTITY CHARGED	QUANTITY INSTALLED	QUANTITY DIFFERENCE	DETAIL ACTIVITY YEAR & MONTH
006	PHYSICAL ST TIME		149.11	8		-88- N	
	SUB-TOTAL-DIRECT		149.11 *				
	BALANCE		149.11 *				
	AUTHORIZED DIRECT		.00 *		ESTIMATED MANHOURS		0 *

P.G. & E.

CONSTRUCTION ACCOUNTING DEPARTMENT

MAY 1989

JOB NO. 54701843

ANALYSIS JOB COST REPORT

DIV. 22 - GENERAL OFFICE

MEMO OTHER COSTS

ACCOUNT 9202 - SALARIES-GEN OFC EMPLS

SUB-ACCT 12-ENGINEERING

ACTIVITY 3124 ENG STUDIES -ELEC OPER

SUBACTIV 2040 FINAL

COST ELEMENT	DESCRIPTION	YEAR	AMOUNT	QUANTITY CHARGED	QUANTITY INSTALLED	QUANTITY DIFFERENCE	DETAIL ACTIVITY YEAR & MONTH
001	CLERICAL ST TIME		457.17	24		-88-	N
002	CLERICAL OVERTIME		250.02	9		-88-	N
006	PHYSICAL ST TIME		6,072.34	272		-88-	N D-89- 3 4
007	PHYSICAL OVERTIME		5,548.31	149		-88-	N D-89- 4
014	TECHNICAL ST TIME		197.55	16		-88-	N
015	TECHNICAL OVERTIME		152.11	6		-88-	N
019	MGMT/PROF ST TIME		460.18	24		-88-	N
026	MGMT/PROF ADJUSTMENT		757.41	0		-89-	4
SUB-TOTAL-DIRECT			13,895.09 *				
BALANCE			13,895.09 *				
AUTHORIZED DIRECT			.00 *	ESTIMATED MANHOURS			0 *

P.G. & E.

CONSTRUCTION ACCOUNTING DEPARTMENT

MAY 1989

JOB NO. 54701843

ANALYSIS JOB COST REPORT

DIV. 22 - GENERAL OFFICE

MEMO OTHER COSTS

ACCOUNT 9212 - EXPENSES-GEN OFC EMPLS

SUB-ACCT 12-ENGINEERING  
SUBACTIV 2040 FINAL

ACTIVITY 3124 ENG STUDIES -ELEC OPER

COST ELEMENT	DESCRIPTION	YEAR	AMOUNT	QUANTITY CHARGED	QUANTITY INSTALLED	QUANTITY DIFFERENCE	DETAIL ACTIVITY YEAR & MONTH
046	MILEAGE-GENERAL CONST		356.74	444		-88-	N D
093	PETTY CASH		31.86	0		-88-	N
SUB-TOTAL-DIRECT			31.86			*	
BALANCE			388.60			*	
AUTHORIZED DIRECT			.00	ESTIMATED MANHOURS		*	0 *

P.G. & E.

CONSTRUCTION ACCOUNTING DEPARTMENT

MAY 1989

JOB NO. 54701843

ANALYSIS JOB COST REPORT

DIV. 22 - GENERAL OFFICE

MEMO OTHER COSTS

ACCOUNT 9213 - GO SUPPLIES & EXPENSES

SUB-ACCT 12-ENGINEERING

ACTIVITY 3124 ENG STUDIES -ELEC OPER

COST ELEMENT	DESCRIPTION	YEAR	AMOUNT	QUANTITY CHARGED	QUANTITY INSTALLED	QUANTITY DIFFERENCE	DETAIL ACTIVITY YEAR & MONTH
052	CONST EQUIP USE-GEN CONS		72.00	6		-88- N	
	SUB-TOTAL-DIRECT		.00 ✕				
	BALANCE		72.00 ✕				
	AUTHORIZED DIRECT		.00 ✕		ESTIMATED MANHOURS		0 ✕

P.G. & E.

CONSTRUCTION ACCOUNTING DEPARTMENT

MAY 1989

JOB NO. 54701843

ANALYSIS JOB COST REPORT

DIV. 22 - GENERAL OFFICE

MEMO OTHER COSTS

ACCOUNT 9213 - GO SUPPLIES & EXPENSES

ACTIVITY 3124 ENG STUDIES -ELEC OPER

SUB-ACCT 12-ENGINEERING  
SUBACTIV 2040 FINAL

COST ELEMENT	DESCRIPTION	YEAR	AMOUNT	QUANTITY CHARGED	QUANTITY INSTALLED	QUANTITY DIFFERENCE	DETAIL ACTIVITY YEAR & MONTH
871591	WELDING ROD	SP	178.04	0		-89- 1	
872090	MATERIAL MISC TOOL	SP	43.66	0		-89- 1	
875699	MISC MATERIAL		3.24	0		-88- D	
052	CONST EQUIP USE-GEN CONS		479.50	126		-88- N	
067	FREIGHT		530.25	0		-89- 1	
091	G.C. PER DIEM ALLOWANCE		442.96	168		-88- N D	
469	MEAL ALLOWANCE		371.00	2		-88- N D	
612	BUILDING MATERIAL		31.42	2		-89- 1	
698	MISCL &UNCLASS MATERIAL		152.51	0		-89- 1	
SUB-TOTAL-DIRECT			1,753.08 *				
BALANCE			2,232.58 *				
AUTHORIZED DIRECT			.00 *		ESTIMATED MANHOURS		0 *

P.G. &amp; E.

## CONSTRUCTION ACCOUNTING DEPARTMENT

MAY 1989

JOB NO. 54701843

## ANALYSIS JOB COST REPORT

DIV. 2 - SAN FRANCISCO

## ACCOUNT TOTALS

CONTROL ACCOUNT	ACCOUNT NUMBER	DIRECT EXP.	TRF. TO PLANT	BAL TO BE TRF.
CAPITAL	1124	796.04	1,523.06-	727.02-
	1224	2,115.19	5,394.64-	3,279.45-
SUB-TOTAL		2,911.23 *	6,917.70-*	4,006.47-*
REMOVAL		.00	.00	.00
SUB-TOTAL		.00 *	.00 *	.00 *
MEMO M & O	1502	9,473.06	.00	9,473.06
	1602	166.00	.00	166.00
	1603	549.55	.00	549.55
	1607	330.00	.00	330.00
	1855	1,337.65	.00	1,337.65
	8026	272.50	.00	272.50
	9202	14,044.20	.00	14,044.20
	9212	31.86	.00	31.86
	9213	1,753.08	.00	1,753.08
SUB-TOTAL		27,957.90 *	.00 *	27,957.90 *
AUTHORIZED DIRECT		30,869.13	6,917.70-	23,951.43
INDIRECT & OVERHEAD		11,031.39	.00	.00
GROSS FIN.		41,900.52 *	6,917.70-*	34,982.82 *
SALVAGE		.00	.00	.00

R228JA CONTROL SEQUENCE NO. 40,518 SHEET NO. 31 SOURCE DOC. NO. 0234G91721

JOB NO. 54701843

P.G. & E.

CONSTRUCTION ACCOUNTING DEPARTMENT

MAY 1989

JOB NO. 54701843

ANALYSIS JOB COST REPORT

DIV. 2 - SAN FRANCISCO

ACCOUNT TOTALS

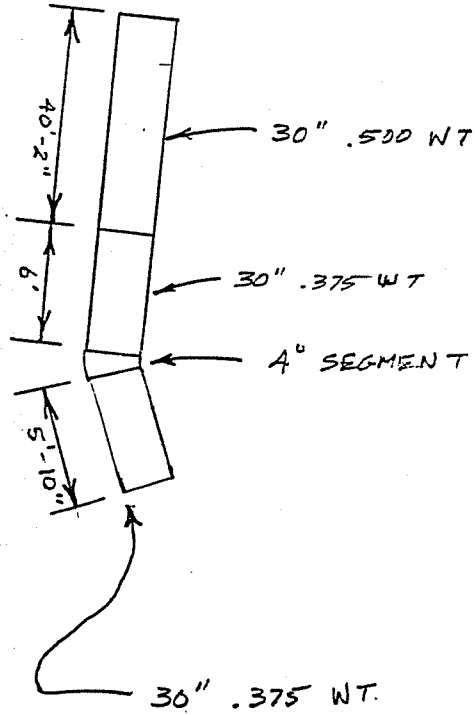
CONTROL ACCOUNT	ACCOUNT NUMBER	DIRECT EXP.	TRF. TO PLANT	BAL TO BE TRF.
CREDITS NOT INCLUDED IN AMOUNT AUTHORIZED		.00	.00	
O.C.I.		.00	.00	.00
TOTAL		41,900.52 **	6,917.70-**	34,982.82 **







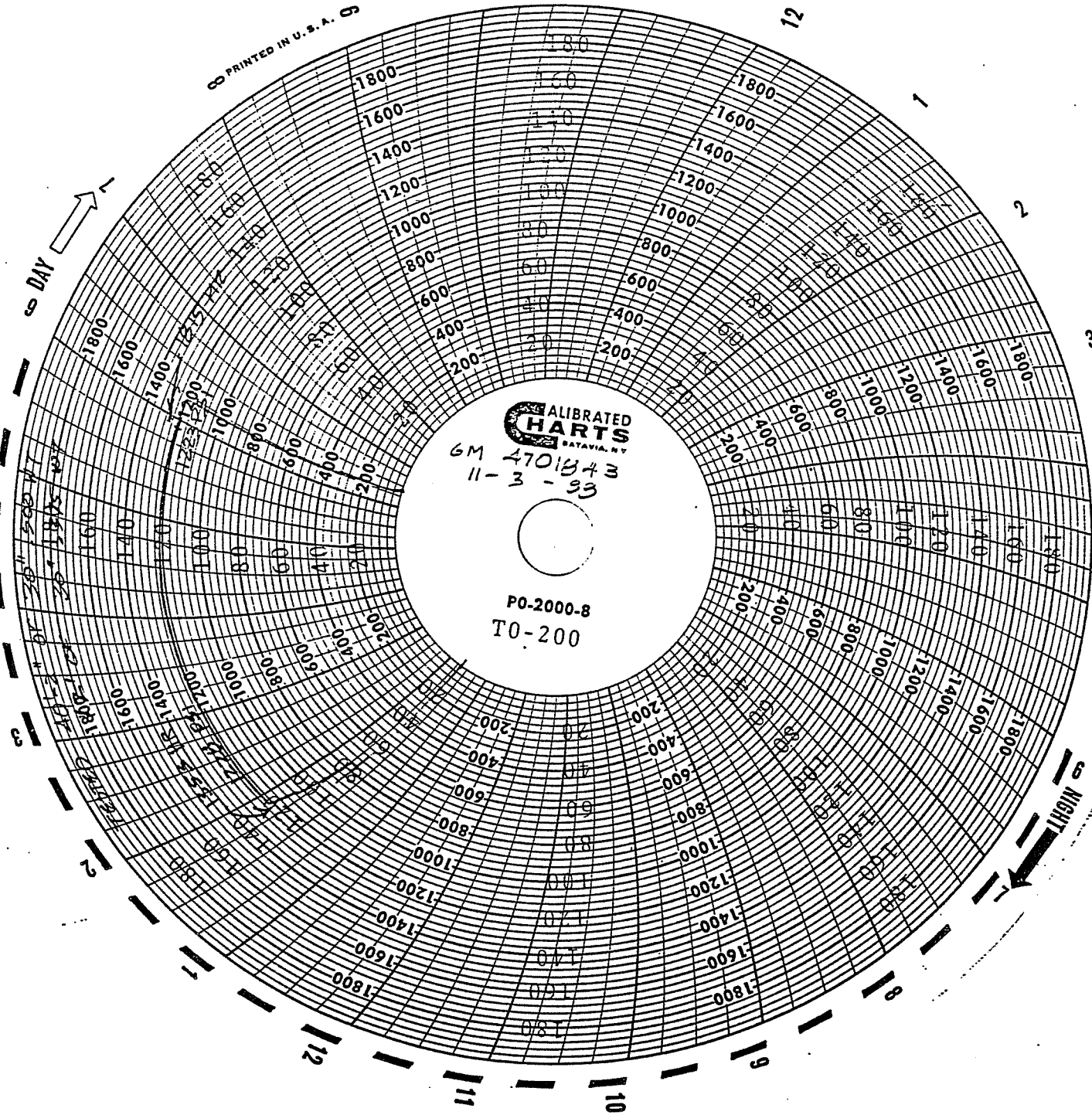
11-3-88  
MARTIN SERVICE CENTER  
LOWER YARD - BRISBANE  
SUNKER HILL EMERGENCY REF: 2  
TL - 0132  
LOWEST PRESSURE - 1223  
NO ELEV. VARIATION



PRINTED IN U.S.A. ©

DAY

NIGHT



CALIBRATED  
**HARTS**  
BATAVIA, N.Y.

6M 4701343  
11-3-93

PO-2000-8  
T0-200

STRENGTH TEST INFORMATION

1. JOB GM 4701843
2. LOCATION MARTIN SERVICE CENTER; BRISBADE
3. DATE 11-3-88 PRESSURE 1228-1223
4. TIME 1353 HR - 1815 HR DURATION 4 HR - 22 MIN.
5. LENGTH 40'-2" / 12' SIZE 30" / 30" W.T. .500 / .375
6. PIPE SPEC. X60 DSAW PTW 01-0501 SER. 9603148
7. RECORDING GAUGE MERCURY LAST CALIBRATED 10-17-88
8. RANGE 0-2000 SER. 7000
9. DEAD WGT. CHAUDLER LAST CALIBRATED 10-1-88
10. TEST FLUID WATER DATE 11-3-88
11. SUPERVISED BY N. SCHWAB DATE 11-4-88
12. APPROVED [REDACTED]

11-3-88

N. SCHWAB

BUNKER HIL 0132 EMERGENCY  
REPAIR

0-

MIN - 1170 MAX - 1235

TIME	PRESSURE	
1353 HRS 1:53 PM	1228	
1400 HRS 2:00	1228	
1415 HRS 2:15	1228	
1430	1228	
1450	1228	
1534	1228	
1559	1228	
1633	1227	SUN WENT DOWN (TEMP DROP)
1704	1225	
1732	1223	
1800	1223	
1815	1223	REWATERED









PG&E  
 JOB ESTIMATE  
 Summary and Calculation Sheet  
 For Indirects and Overheads

Sht. No. 20F3  
 Est. No. 023491721  
 Date: 10-31-88  
 Initials: RCM

% FOR DIRECT COSTS

Capital Esc. 0 months at 0%  
 M&O Esc 0 months at 0%

% FOR INDIRECT COSTS

Labor-Div/GC 0%  
 Labor-GC 0%, amount \$ 0  
 Material 0%  
 TE 44%  
 M&O-Labor 31%  
 M&O-Material 29%

% FOR OVERHEADS

G&A-Instal 0%  
 Removal 0%  
 Ad Val Tax 0%  
 0years  
 AFUDC 0%

TYPE OF COSTS		PG&E	CONTRACT				TOTAL
		LABOR	MATERIAL	EMPLOYEE	&OUTSIDE	OTHER	
<b>DIRECT COSTS</b>							
1.	Capital Installation/Purchase	CI	0	0	0	0	0
2.	Capital Removal	CRE	0	0	0	0	0
3.	Capital Travel	CT	0				0
4.	Capital Escalation	CE	0	0	0	0	0
5.	**Total Capital Direct Costs**	TCD	0	0	0	0	0
=====							
6.	M & O, Include Travel Labor	MO	8990	300	75	6000	15365
7.	M & O Escalation	MDE	0	0	0	0	0
8.	** Total M & O Direct Costs **	TMOD	8990	300	75	6000	15365
=====							
9.	Total Authorized Direct Costs	TD	8990	300	75	6000	15365
<b>INDIRECT COSTS</b>							
10.	Installation	I	0	0			0
11.	Removal	R	0	0			0
12.	Transp. & Work Eq. (Cap & M)	TE				3956	3956
13.	** Total Capital Indirects **	TCI	0	0		3956	3956
14.	** Total M & O Indirects **	TMI	2787	87			2874
=====							
15.	Total Indirects Costs	TI	2787	87		3956	6830
<b>OVERHEADS</b>							
16.	Gen. Engr. and Admin.	GEAC					0
17.	Ad Valorem Tax	Tax					0
18.	AFUDC	AFUDC					0
=====							
19.	Total Overheads	TO					0
<b>GROSS FINANCIAL COST</b>							
20.	Directs, Indirects, Overheads	TOTAL					22195

COMPOSITE %	Face Sheet	PC Total
a. Cap Indirects =	0	0
b. M&O Indirects =	18.7	2874
c. Overheads =	0	0
		22195
		0
		22195





PG&E  
 JOB ESTIMATE  
 Summary and Calculation Sheet  
 For Indirects and Overheads

Sht. No. 20F3  
 Est. No. 023491721  
 Date: 10-31-88  
 Initials: RCM

% FOR DIRECT COSTS

Capital Esc. 0 months at 0%  
 M&O Esc 0 months at 0%

% FOR INDIRECT COSTS

Labor-Div/GC 0%  
 Labor-GC 0%, amount \$ 0  
 Material 0%  
 TE 44%  
 M&O-Labor 31%  
 M&O-Material 29%

% FOR OVERHEADS

G&A-Instal 0%  
 Removal 0%  
 Ad Val Tax 0%  
 0years  
 AFUDC 0%

TYPE OF COSTS		PG&E	CONTRACT	OTHER	TOTAL
		LABOR	MATERIAL	EMPLOYEE	&OUTSIDE
<b>DIRECT COSTS</b>					
1. Capital Installation/Purchase	CI	0	0	0	0
2. Capital Removal	CRE	0	0	0	0
3. Capital Travel	CT	0			0
4. Capital Escalation	CE	0	0	0	0
5. <b>**Total Capital Direct Costs**</b>	<b>TCD</b>	<b>0</b>	<b>0</b>	<b>0</b>	<b>0</b>
6. M & O, Include Travel Labor	MO	8990	300	75	6000
7. M & O Escalation	MGE	0	0	0	0
8. <b>** Total M &amp; O Direct Costs **</b>	<b>TMOD</b>	<b>8990</b>	<b>300</b>	<b>75</b>	<b>6000</b>
=====					
9. Total Authorized Direct Costs	TD	8990	300	75	6000
<b>INDIRECT COSTS</b>					
10. Installation	I	0	0		0
11. Removal	R	0	0		0
12. Transp. & Work Eq. (Cap & M)	TE				3956
13. <b>** Total Capital Indirects **</b>	<b>TCI</b>	<b>0</b>	<b>0</b>		<b>3956</b>
14. <b>** Total M &amp; O Indirects **</b>	<b>TMI</b>	<b>2787</b>	<b>87</b>		<b>2874</b>
=====					
15. Total Indirects Costs	TI	2787	87		3956
<b>OVERHEADS</b>					
16. Gen. Engr. and Admin.	GEAC				0
17. Ad Valorem Tax	Tax				0
18. AFUDC	AFUDC				0
=====					
19. Total Overheads	TO				0
<b>GROSS FINANCIAL COST</b>					
20. Directs, Indirects, Overheads	TOTAL				22195

COMPOSITE %

a. Cap Indirects = 0  
 b. M&O Indirects = 18.7  
 c. Overheads = 0

Face Sheet  
 0  
 2874  
 0

PC Total 22195  
 Div Total 0  
 Difference 22195





PG&E  
GAS CONSTRUCTION DEPARTMENT  
JOB STATUS MEMORANDUM

Job Number                   GM 4701843  
Source Document Number   0234600000  
Date Prepared               November 8, 1988

To Division Manager of Peninsula Division, Golden Gate Region

This is to notify you of the status of the above job covering:  
30" LI32 REPAIR  
BUNKER HILL RD S.M.

Start Date                   11/02/88  
Release Date  
Completion Date

These dates are being reported by General Construction to Construction Accounting on the R200 series Job Progress Markup Reports.

J. POPE  
Manager, Gas Construction Department

By General Foreman: Sanchietti  
BRISBANE

DISTRIBUTION:      X   Division Manager  
                    X   Construction Accounting  
                    X   Manager In Charge  
                    X   Field Job File



# PARTIAL ASSIGNMENT LETTER

TO LOUIE SANCHETTI  
DIVISION GENERAL CONSTRUCTION GAS  
DEPARTMENT GAS

11-7-88  
DATE

WORK PACKAGE NUMBER		
JOB ORDER		
PREFIX	NUMBER	SUF
GM	470184	3

RESPONSIBILITY CENTER			
ORIGINATING		CHARGED	
DIV	CENTER	DIV	CENTER
02	693	02	693

SUBJECT: Assignment of a portion of:

Report to:

The following work is hereby assigned to you for completion. All charges should be made directly to this job.

WORK PACKAGE ACTIVITY	S I R CODE	FACILITY		ACTIVITY	SUB ACTIVITY	SPECIAL I.D. CODE	DESCRIPTION of WORK	REQUIRED COMPLETION DATE	ESTIMATED LABOR COST
		DIV	I.D.	ACCOUNT	SUB ACCOUNT				
		02	132	3664	2040		Repair LONGITUDINAL Weld Defect	11-7-88	

NOTED  
NOV 15 1988  
Phil De La Calzava

Status of Material. On hand? Yes  No  Other comments: S.D # 0234691721  
:PIN# GD 02-88-21 PHASE P

<u>ASSIGNED BY</u>	<u>COORDINATORS TO CONTACT</u>	<u>ASSIGNED TO</u>
<u>DONALD E JOHANSEN</u>	NAME <u>LOU SANCHETTI</u>	
<u>1970 INDUSTRIAL</u>	ADDRESS <u>BRISBANE GC GAS</u>	
<u>626-7458</u>	TEL. No. <u>575-3478</u>	
<u>598-7458</u>	CO. LOCAL <u>467-4460</u>	
	P. T. & T. <u>467-4460</u>	

Remarks: GC TO Excavate, WELD, WRAP & Backfill  
WORK Completed 11-7-88



Signed \_\_\_\_\_  
Division PENINSULA  
Department GAS CONSTRUCTION

DISTRIBUTION:  
ORIG - Assignee Division  
COPY - Plant Accounting Dept.  
COPY - Job File