



CSX Train Derailment AM SITREP 18 FEB 15

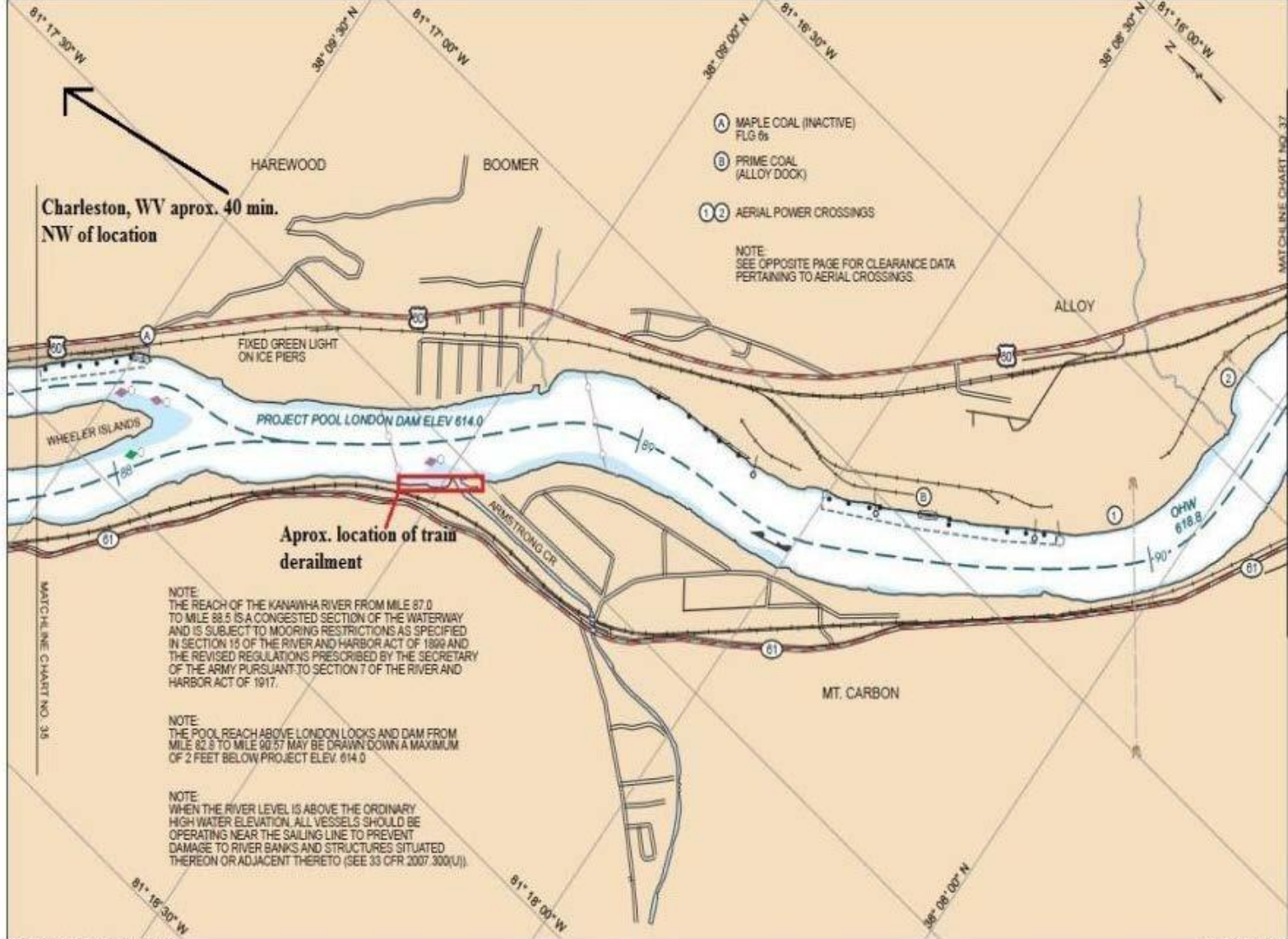


**MOUNT CARBON,
WEST VIRGINIA**

MISLE CASE # 716635

ACTIVITY # 5069804

18FEB15 AM SITREP to D8



Charleston, WV approx. 40 min. NW of location

NOTE:
THE REACH OF THE KANAWHA RIVER FROM MILE 87.0 TO MILE 88.5 IS A CONGESTED SECTION OF THE WATERWAY AND IS SUBJECT TO MOORING RESTRICTIONS AS SPECIFIED IN SECTION 15 OF THE RIVER AND HARBOR ACT OF 1899 AND THE REVISED REGULATIONS PRESCRIBED BY THE SECRETARY OF THE ARMY PURSUANT TO SECTION 7 OF THE RIVER AND HARBOR ACT OF 1917.

NOTE:
THE POOL REACH ABOVE LONDON LOCKS AND DAM FROM MILE 82.8 TO MILE 90.57 MAY BE DRAWN DOWN A MAXIMUM OF 2 FEET BELOW PROJECT ELEV. 614.0

NOTE:
WHEN THE RIVER LEVEL IS ABOVE THE ORDINARY HIGH WATER ELEVATION, ALL VESSELS SHOULD BE OPERATING NEAR THE SAILING LINE TO PREVENT DAMAGE TO RIVER BANKS AND STRUCTURES SITUATED THEREON OR ADJACENT THERETO (SEE 33 CFR 2007.300(U)).

- (A) MAPLE COAL (INACTIVE) FLG 8s
- (B) PRIME COAL (ALLOY DOCK)
- (1)(2) AERIAL POWER CROSSINGS

NOTE:
SEE OPPOSITE PAGE FOR CLEARANCE DATA PERTAINING TO AERIAL CROSSINGS.

REVISED DECEMBER 2012



CHART NO. 36



CSX Train Derailment
occurring at aprox. 1320
16FEB15

Overview from Google
Maps of train derailment
area, KAN MM 88.5



**Approximate
location of
train derailment**



Weather

Charleston, WV

Wednesday 12:00 PM

Light snow



19 °F | °C

Precipitation: 81%

Humidity: 83%

Wind: 8 mph



1 PM

4 PM

7 PM

10 PM

1 AM

4 AM

7 AM

10 AM

Wed



26° -4°

Thu



9° -16°

Fri



20° 12°

Sat



40° 38°

Sun



45° 22°

Mon



26° 11°

Tue



35° 14°

Wed



25° 9°

[More on weather.com](#)

[Feedback](#)



CURRENT SITUATION



Fire fighting efforts are continuing. Fire is 85% extinguished.

A 35' x 115' area of product is visible on the shore near the derailed cars. There is an unconfirmed amount of oil in Armstrong Creek. Two vac trucks were on scene last night and recovered approximately 3000 gallons of oil/water mix overnight. Total of 5000 gallons of oil/water mix has been recovered from land.

Two 250' sections of 18" hard boom lined w/ sorbent boom deployed last night. The plan is to reposition it today as currently it is laying on top of the ice.

Safety zone established by COTP to close waterway. No queue.

Water quality samples have been tested. No crude oil was found. Hourly testing continues at commercial water intakes.





IC OBJECTIVES

(0800 18 FEB to 0800 19 FEB)



Provide for the safety and security of responders and maximize the protection of public health and welfare

Initiate actions to stop or control the source and minimize the total volume released

Contain, treat, and recover, spilled materials from the water's surface and shore side contaminated areas

Account for and provide temporary shelter for displaced citizens

Restore basic functionality of maritime transportation system infrastructure to facilitate the rapid resumption of commerce.

Coordinate fire containment

Implement measures to isolate, contain, and stabilize the incident including the establishment and adjustment of security perimeters.



IC OBJECTIVES (cont)

(0800 18 FEB to 0800 19 FEB)



Implement procedures that ensure a coordinated effort is in place for investigation and evidence collection

Identify and protect environmentally sensitive areas, including wildlife, habitats, and historic properties

Conduct shoreline assessment

Manage a coordinated interagency response effort that reflects the composition of uc

Inform the public, stakeholders, and the media of response activities

Identify and address social, political, and economic issues

Establish an incident documentation process



State/Fed Agencies Involved

On scene

- **US Coast Guard**
- **Environmental Protection Agency (EPA)**
- **Federal Railroad Administration (FRA)**
- **West Virginia Public Health**
- **West Virginia State police**
- **West Virginia Department of Environmental Protection**

- **NTSB enroute.**



RESOURCES

- ICP LOCATED IN MONTGOMERY, WV
- STATE EOC IN CHARLESTON, WV
- MSU HUNTINGTON (8MBRS) ONSITE
- STRIKE TEAM (4MBRS) ONSITE
- PIAT (2)/D8 PA (1) ONSITE
- IMAT (4) ONSITE (SAFETY/LIAISON/FINANCE SUPPORT)
- SECTOR PERSONNEL ONSITE (4)
- D5 PA ENROUTE. ETA 18 FEB 15
- NPFC CASE OFFICER ENROUTE. ETA 18 FEB 15



PLANNED ACTIONS



Continue to assess amount of product released on land/river.

Monitor effectiveness of booming strategies

Continue hourly water monitoring of intakes

Establish thresholds for reconstituting evacuated areas

Next SITREP at 1700 18 FEB

