



National Transportation Safety Board

**Office of Aviation Safety
Washington, D.C. 20594-2000
October 4, 2017**

**ATTACHMENT 11 to the METEOROLOGY FACTUAL REPORT
CEN17FA168**

A copy of the “standard accident weather package” compiled by the ZAB CWSU and provided to the FAA at ZAB

*Submitted by: Mike Richards
NTSB, AS-30*



Center Weather Service Unit Albuquerque ARTCC



Accident Weather Package

Date: 23 May 2017
 To: Mike Richards, NTSB, Aviation Safety Investigator
 From: Neil Haley, CWSU ZAB Meteorologist and David L. Tucker, II, ZAB Meteorologist In Charge
 Subject: WX Data for 4/29/17 0448Z

METAR Data:

METAR/SPECI from KAMA, Amarillo, Amarillo International Airport (United States).	
SP 29/04/2017 06:56->	<i>SPECI KAMA 290656Z AUTO 35022G28KT 10SM VCTS BKN008 BKN022 OVC041 06/05 A2976 RMK AO2 PK WND 35028/0655 LTG DSNT ALQDS RAE54 P0000 T00560050=</i>
SA 29/04/2017 06:53->	<i>METAR KAMA 290653Z AUTO 35023G28KT 10SM VCTS -RA SCT008 BKN022 OVC041 06/05 A2976 RMK AO2 PK WND 32033/0619 LTG DSNT ALQDS RAE05B13 TSB20E51 SLP047 P0032 T00560050=</i>
SP 29/04/2017 06:50->	<i>SPECI KAMA 290650Z AUTO 34020G24KT 10SM -TSRA SCT006 BKN022 OVC041 06/05 A2979 RMK AO2 PK WND 32033/0619 LTG DSNT ALQDS RAE05B13 TSB20 P0032=</i>
SP 29/04/2017 06:42->	<i>SPECI KAMA 290642Z AUTO 34019G31KT 2SM R04/4500VP6000FT TSRA BR SCT006 BKN024 OVC070 05/05 A2976 RMK AO2 PK WND 32033/0619 LTG DSNT ALQDS RAE05B13 TSB20 P0032 T00500050=</i>
SP 29/04/2017 06:33->	<i>SPECI KAMA 290633Z AUTO 35020G31KT 1 3/4SM R04/3500VP6000FT +TSRA BR SCT006 BKN010 OVC018 06/05 A2978 RMK AO2 PK WND 32033/0619 LTG DSNT ALQDS RAE05B13 TSB20 P0007 T00560050=</i>
SP 29/04/2017 06:26->	<i>SPECI KAMA 290626Z AUTO 31025G33KT 4SM +TSRA BR BKN006 OVC012 06/06 A2980 RMK AO2 PK WND 32033/0619 LTG DSNT NE AND S AND SW RAE05B13 TSB20 P0002 T00610056=</i>
SP 29/04/2017 06:15->	<i>SPECI KAMA 290615Z AUTO 33022G31KT 10SM VCTS -RA BKN008 OVC030 07/06 A2979 RMK AO2 PK WND 33031/0615 LTG DSNT NE AND S AND SW RAE05B13 P0000 T00670061=</i>
SP 29/04/2017 06:08->	<i>SPECI KAMA 290608Z AUTO 34019KT 10SM VCTS SCT008 BKN011 OVC030</i>



Center Weather Service Unit Albuquerque ARTCC



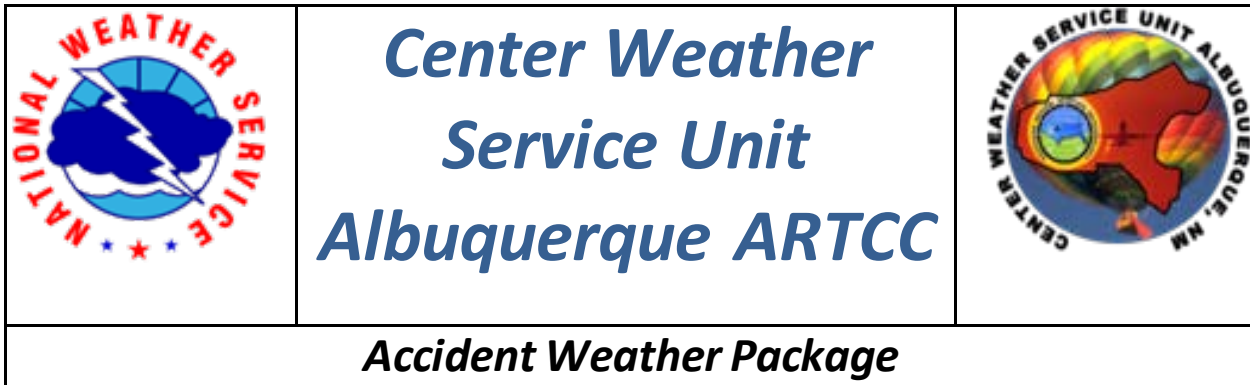
Accident Weather Package

**07/06 A2978 RMK AO2 LTG DSNT NE AND S AND SW RAE05
P0000 T00670061=**

SP	29/04/2017 06:01->	SPECI KAMA 290601Z AUTO 35019G26KT 10SM -RA FEW008 SCT017 OVC030 07/06 A2977 RMK AO2 LTG DSNT SW P0000 T00670061=
SA	29/04/2017 05:53->	METAR KAMA 290553Z AUTO 01020G27KT 10SM -RA SCT010 BKN018 OVC037 07/06 A2975 RMK AO2 PK WND 02034/0532 WSHFT 0522 LTG DSNT N AND SW RAB18 SLP047 P0005 60007 T00670061 10106 20067 402390056 58007=
SP	29/04/2017 05:51->	SPECI KAMA 290551Z AUTO 01021G27KT 9SM -RA SCT010 BKN016 OVC037 07/06 A2975 RMK AO2 PK WND 02034/0532 WSHFT 0522 LTG DSNT N AND SW RAB18 P0005=
SP	29/04/2017 05:42->	SPECI KAMA 290542Z AUTO 36016G28KT 6SM -RA BR BKN008 OVC014 07/06 A2978 RMK AO2 PK WND 02034/0532 WSHFT 0522 LTG DSNT N RAB18 P0004 T00670061=
SA	29/04/2017 04:53->	METAR KAMA 290453Z AUTO 36021G28KT 10SM BKN007 OVC012 07/07 A2978 RMK AO2 PK WND 36032/0426 LTG DSNT W RAB14E25 CIG 005V009 SLP057 P0000 T00720067=
SA	29/04/2017 03:53->	METAR KAMA 290353Z 01020G27KT 10SM BKN006 OVC037 08/07 A2977 RMK AO2 PK WND 01027/0347 LTG DSNT SW RAB00E31 CIG 004V013 SLP056 P0001 T00780072=
SP	29/04/2017 03:30->	SPECI KAMA 290330Z 01019KT 10SM -RA BKN008 BKN012 OVC018 08/07 A2978 RMK AO2 RAB00 P0001 T00780072=
SP	29/04/2017 03:10->	SPECI KAMA 290310Z 36015KT 10SM -RA BKN010 BKN016 OVC047 08/07 A2980 RMK AO2 RAB00 PRESRR P0000 T00830072=
SA	29/04/2017 02:53->	METAR KAMA 290253Z 36021KT 10SM OVC008 08/07 A2978 RMK AO2 PK WND 03029/0216 RAB39E53 CIG 007V012 SLP060 P0000 60001 T00830072 53026=

TAF Data:

**FTUS44 KAMA 290136 AAA
TAFAMA
TAF AMD
KAMA 290136Z 2902/2924 02017G25KT P6SM -SHRA SCT030 OVC050
TEMPO 2902/2904 BKN009 OVC070
FM290900 01012G31KT 4SM -RA OVC010
FM291500 35020G30KT 2SM -RA OVC005=**



AIRMETS, SIGMETs, CWAs, Convective SIGMETs:

- AIRMETS:

306

WAUS44 KPCI 290245

WA4T

-DFWT WA 290245

AIRMET TANGO FOR TURB AND LLWS VALID UNTIL 290900

**AIRMET TURB...TX LA MS AL AND CSTL WTRS
FROM 20WNW MGM TO 50SW PZD TO 40W CEW TO 130ESE LEV TO 120SSW
LCH TO 80E BRO TO 20W BRO TO 20ESE PSX TO 20WNW AEX TO 40E MCB
TO 20WNW MGM
MOD TURB BTN FL290 AND FL390. CONDS CONTG BYD 09Z ENDG 12-15Z.**

**AIRMET TURB...OK TX
FROM OSW TO 30N SJT TO 90S MRF TO ELP TO INK TO 30ESE TBE TO 50W
LBL TO OSW
MOD TURB BTN FL180 AND FL370. CONDS CONTG BYD 09Z THRU 15Z.**

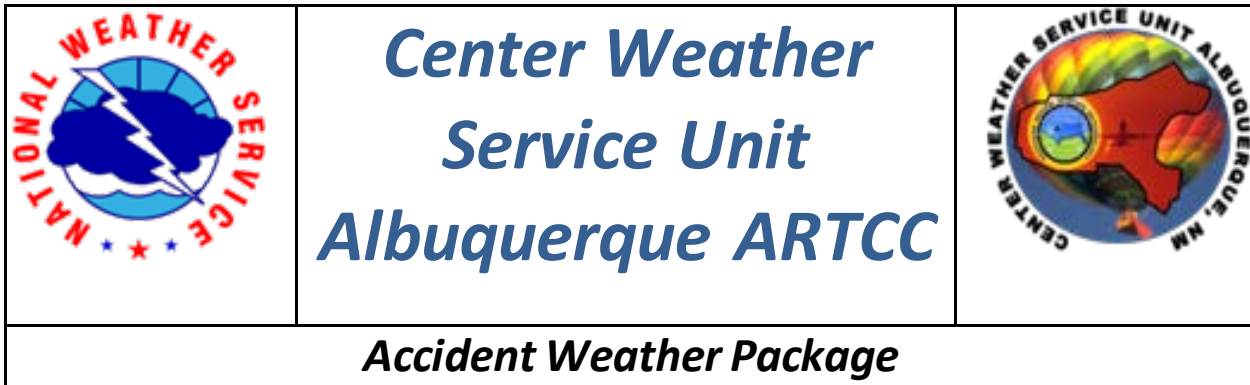
**AIRMET TURB...OK TX AR SD NE KS MN IA MO WI IL IN
FROM 50S DLH TO 60ESE EAU TO 50SSE DLL TO 20NNW TTH TO 40W FAM
TO 40SW SPS TO 50N INK TO 30ESE TBE TO 50W LBL TO GLD TO BFF TO
70SW RAP TO 20NNE PIR TO 30E ABR TO 50S DLH
MOD TURB BTN 100 AND FL180. CONDS CONTG BYD 09Z THRU 15Z.**

**LLWS POTENTIAL...OK TX AR TN LA MS AL MO IL IN KY
BOUNDED BY 20ENE CVG-HNN-HMV-40E VXV-30ESE MLU-40NE TXK-70WSW
TTT-60SW SPS-20W RZC-70ESE RZC-20ENE CVG
LLWS EXP. CONDS CONTG BYD 09Z ENDG 09-12Z.**

909

WAUS44 KPCI 290245

WA4Z



-DFWZ WA 290245

AIRMET ZULU FOR ICE AND FRZLVL VALID UNTIL 290900

AIRMET ICE...OK TX NE KS

FROM 70SW RAP TO 20NW ONL TO 30SSE ANW TO 40WSW OVR TO 20NE SLN
TO 70ENE ICT TO 30SSW ICT TO 60NE MMB TO 30NW CDS TO 40SSW TXO TO
30ESE TBE TO 50W LBL TO GLD TO BFF TO 70SW RAP
MOD ICE BTN FRZLVL AND FL220. FRZLVL SFC-110. CONDS CONTG BYD 09Z
THRU 15Z.

WAUS44 KPCI 290245

WA4S

-DFWS WA 290245

AIRMET SIERRA FOR IFR VALID UNTIL 290900

AIRMET IFR...OK TX AR NE KS IA MO WI LM MI IL IN

FROM 40SW BAE TO 40SE ORD TO 50WSW DXO TO FWA TO 30N CVG TO
50WSW PXV TO 50NNW LIT TO 30SE OKC TO 30SSW TXO TO 30ESE TBE TO
50W LBL TO GLD TO 20N BFF TO 50ESE LBF TO 40SW BAE
CIG BLW 010/VIS BLW 3SM PCPN/BR. CONDS CONTG BYD 09Z THRU 15Z.

- SIGMETs:

745

- CWAs:

None

- Convective SIGMETs:

WSUS32 KPCI 290455

SIGC

MKCC WST 290455

CONVECTIVE SIGMET 11C

VALID UNTIL 0655Z

KY IN IL MO AR OK KS

FROM 30NW CVG-30ENE IJU-30E MLC-40SSW END-40S COU-30NW CVG
AREA SEV TS MOV FROM 23045KT. TOPS ABV FL450.



**Center Weather
Service Unit
Albuquerque ARTCC**



Accident Weather Package

TORNADOES...HAIL TO 2.5 IN...WIND GUSTS TO 60KT POSS.

CONVECTIVE SIGMET 12C

VALID UNTIL 0655Z

TX OK

FROM 30W END-60W OKC-30NNE CDS

LINE TS 25 NM WIDE MOV FROM 22025KT. TOPS ABV FL450.

HAIL TO 2.5 IN...WIND GUSTS TO 60KT POSS.

CONVECTIVE SIGMET 13C

VALID UNTIL 0655Z

TX OK NM

FROM 30WSW LBL-10NNE MMB-50WSW LBB-30E DMN-70ENE TCS-30WSW LBL

AREA EMBD TS MOV FROM 22040KT. TOPS TO FL410.

-Area Forecast (FA) Product:

386

FAUS44 KKCI 290145

FA4W

-DFWC FA 290145

SYNOPSIS AND VFR CLDS/WX

SYNOPSIS VALID UNTIL 292000

CLDS/WX VALID UNTIL 291400...OTLK VALID 291400-292000

OK TX AR TN LA MS AL

SEE AIRMET SIERRA FOR IFR CONDS AND MTN OBSCN.

TS IMPLY SEV OR GTR TURB SEV ICE LLWS AND IFR CONDS.

NON MSL HGTS DENOTED BY AGL OR CIG.

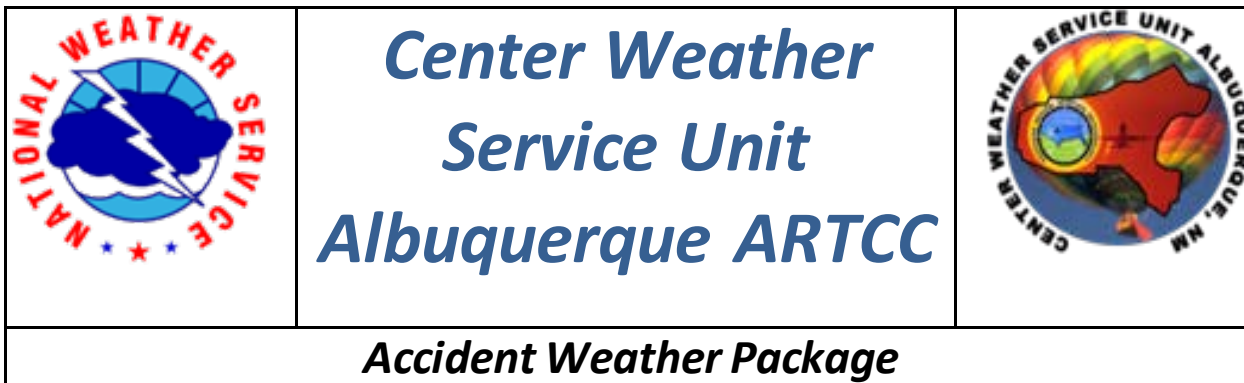
SYNOPSIS...01Z LO PRESS W TX PNHDL. WRMFNT TX PNHDL-CNTRL OK-NRN

AR-WRN KY. BY 20Z LO PRESS NERN OK. WRMFNT NERN OK-SWRN MO.

CDFNT

NERN OK-CNTRL TX-BIG BEND TX.

OK



W...

PNHDL...OVC050 TOP FL270. WDLY SCT -SHRA. 13Z OVC040. VIS 3SM
-SN. WND NW 20G30KT. OTLK...IFR CIG SN WND.
RMNDR...OVC040 LYRD FL270. VIS 3SM SCT -TSRA. TS POSS SEV. CB TOP
FL360. 09Z OVC035. WDLY SCT -SHRA. OTLK...MVFR CIG SHRA 16Z IFR
CIG RA WND.
CNTRL...OVC050 TOP 080. 07Z OVC035 LYRD FL270. VIS 5SM SCT -TSRA.
TS POSS SEV. CB TOP FL390. 12Z OVC025. WDLY SCT -SHRA/ISOL -TSRA.
OTLK...MVFR CIG SHRA TSRA 16Z IFR CIG RA.
E...OVC040 TOP 080. 04Z BKN030 TOP 100. TIL 08Z OCNL VIS 5SM SCT
-TSRA. CB TOP FL390. TS POSS SEV. 08Z OVC015 LYRD FL270. VIS 5SM
SCT -TSRA. OTLK...MVFR CIG TSRA.

NWRN TX

PNHDL...OVC060 LYRD FL270. WDLY SCT -SHRA. WND NELY G25KT. 09Z
OVC040. VIS 4SM -RA. WND NELY 20G30KT. OTLK...IFR CIG RA WND.
S PLAINS...BKN100 TOP FL250. WDLY SCT -SHRA/-TSRA. CB TOP FL390.
09Z OVC050. WND NELY G25KT. OTLK...MVFR CIG WND.

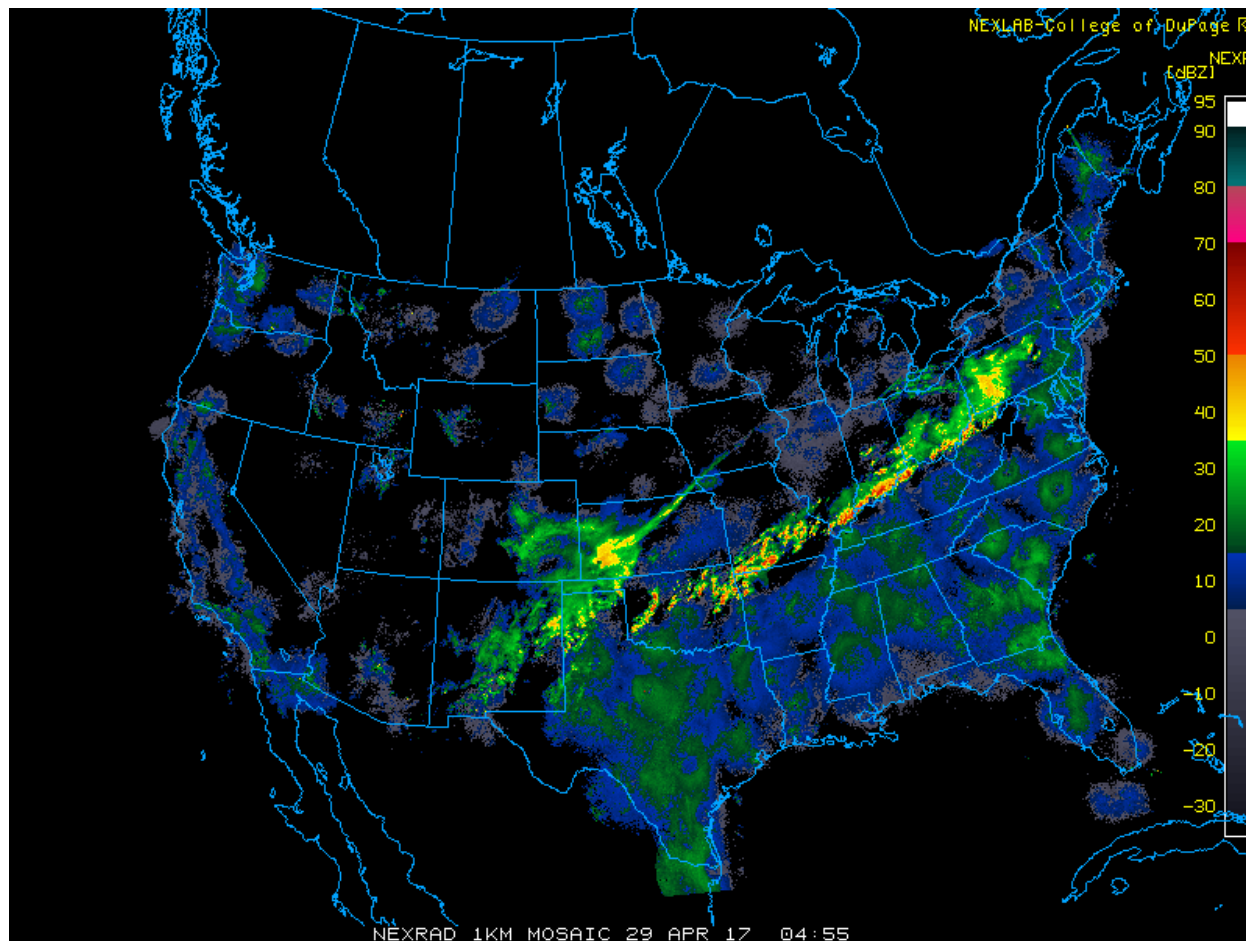
-Radar Imagery:



Center Weather Service Unit Albuquerque ARTCC



Accident Weather Package

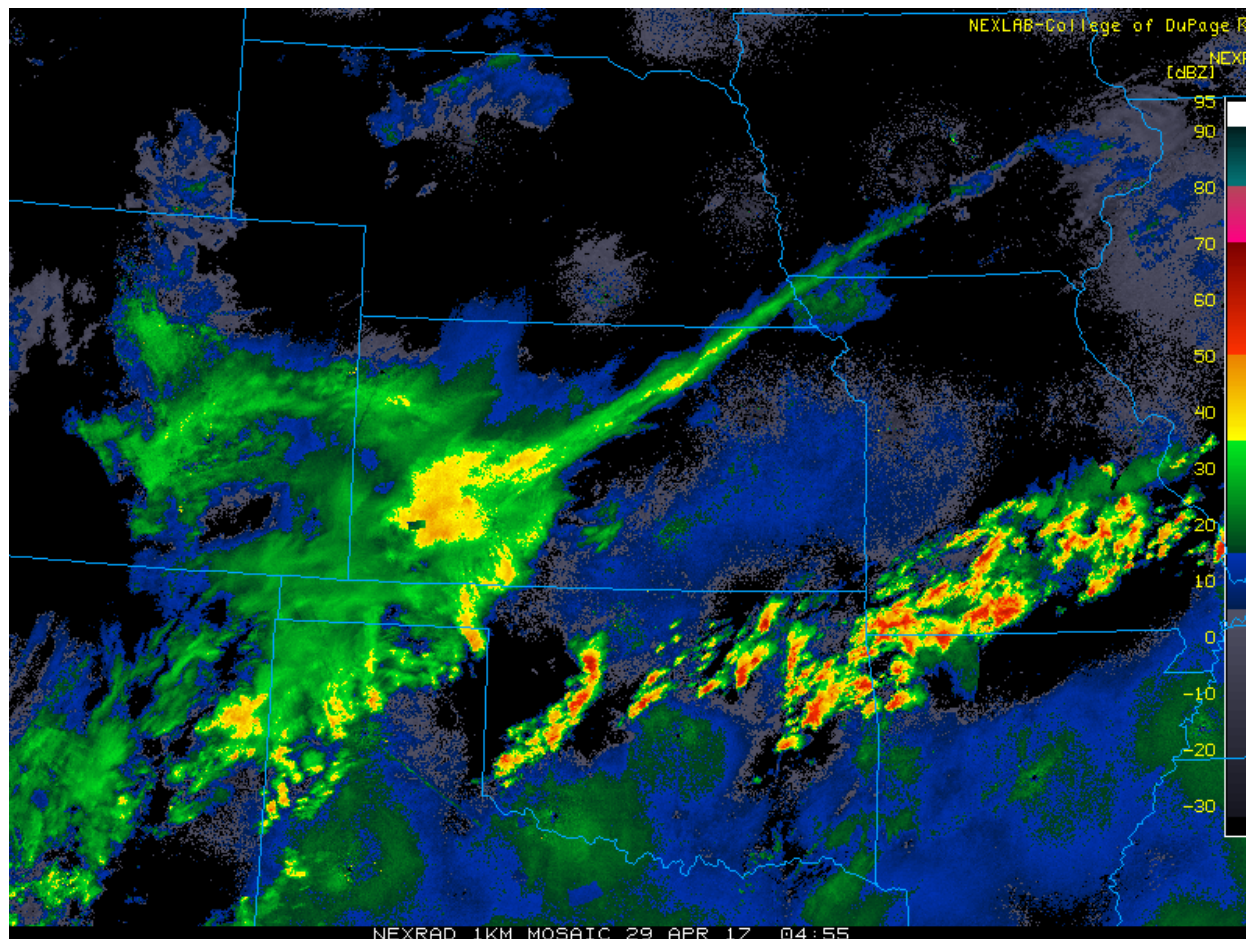




Center Weather Service Unit Albuquerque ARTCC



Accident Weather Package

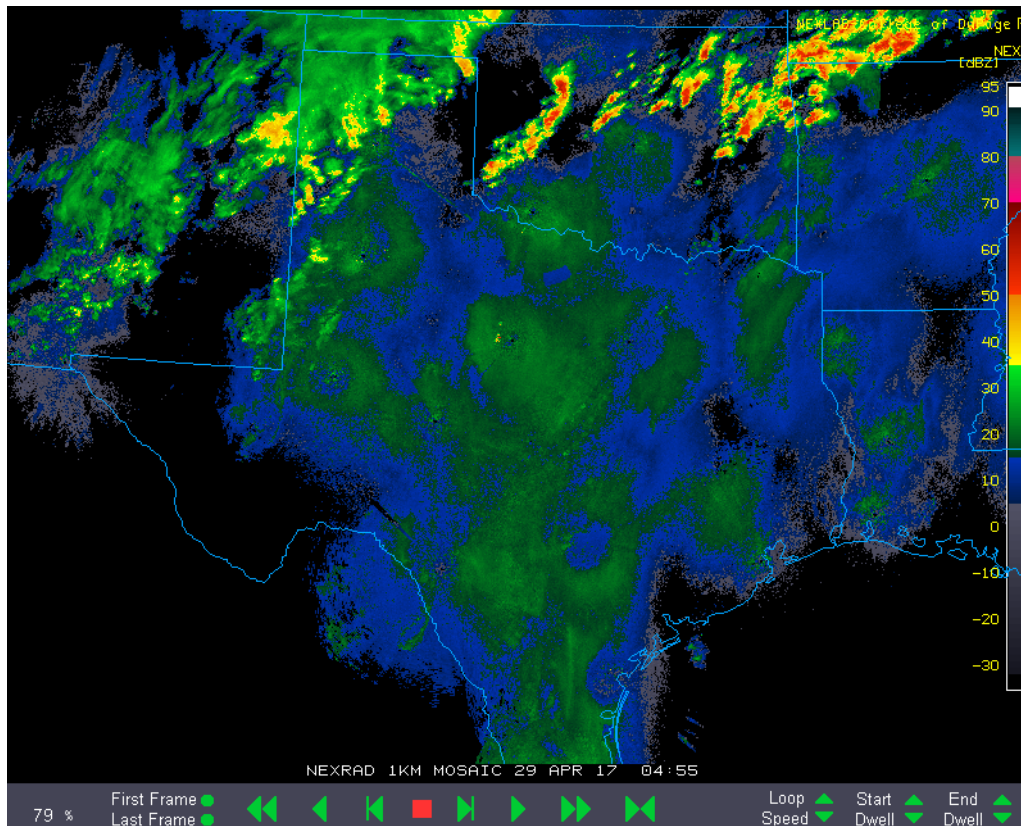




Center Weather Service Unit Albuquerque ARTCC



Accident Weather Package



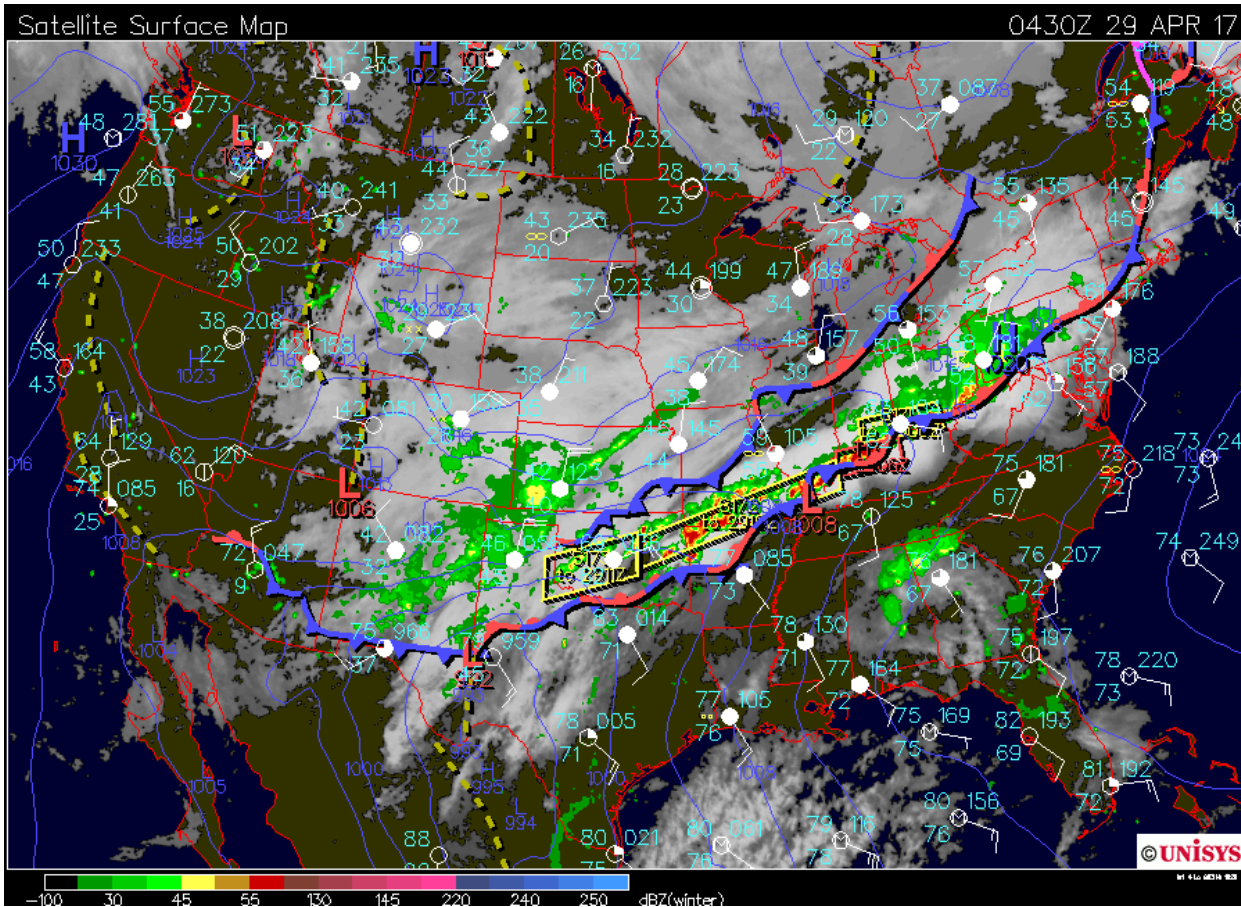
-Satellite Imagery:



Center Weather Service Unit Albuquerque ARTCC



Accident Weather Package





Center Weather Service Unit Albuquerque ARTCC

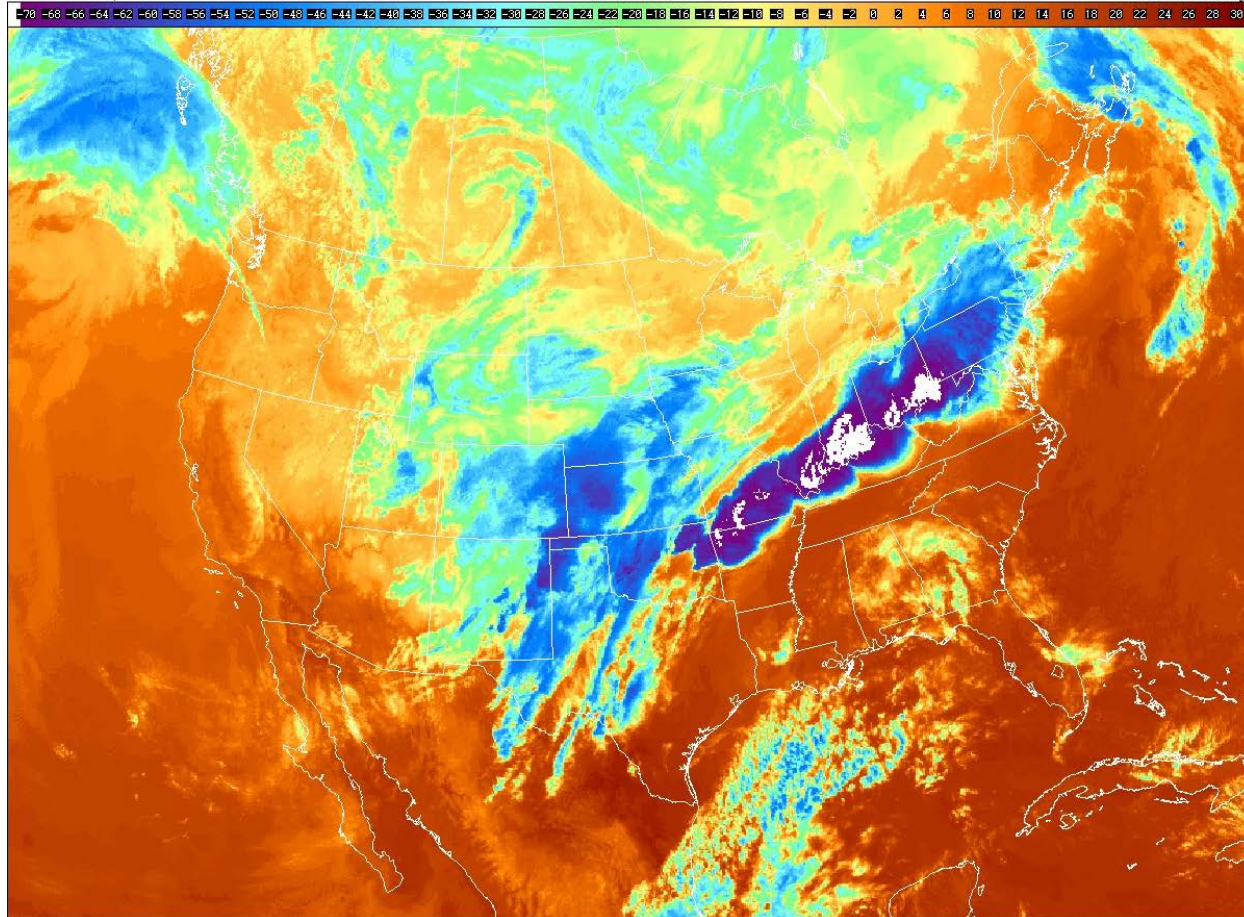


Accident Weather Package

0445 UTC Sat 29 Apr 2017

IR Satellite

www.aviationweather.gov





Center Weather Service Unit Albuquerque ARTCC

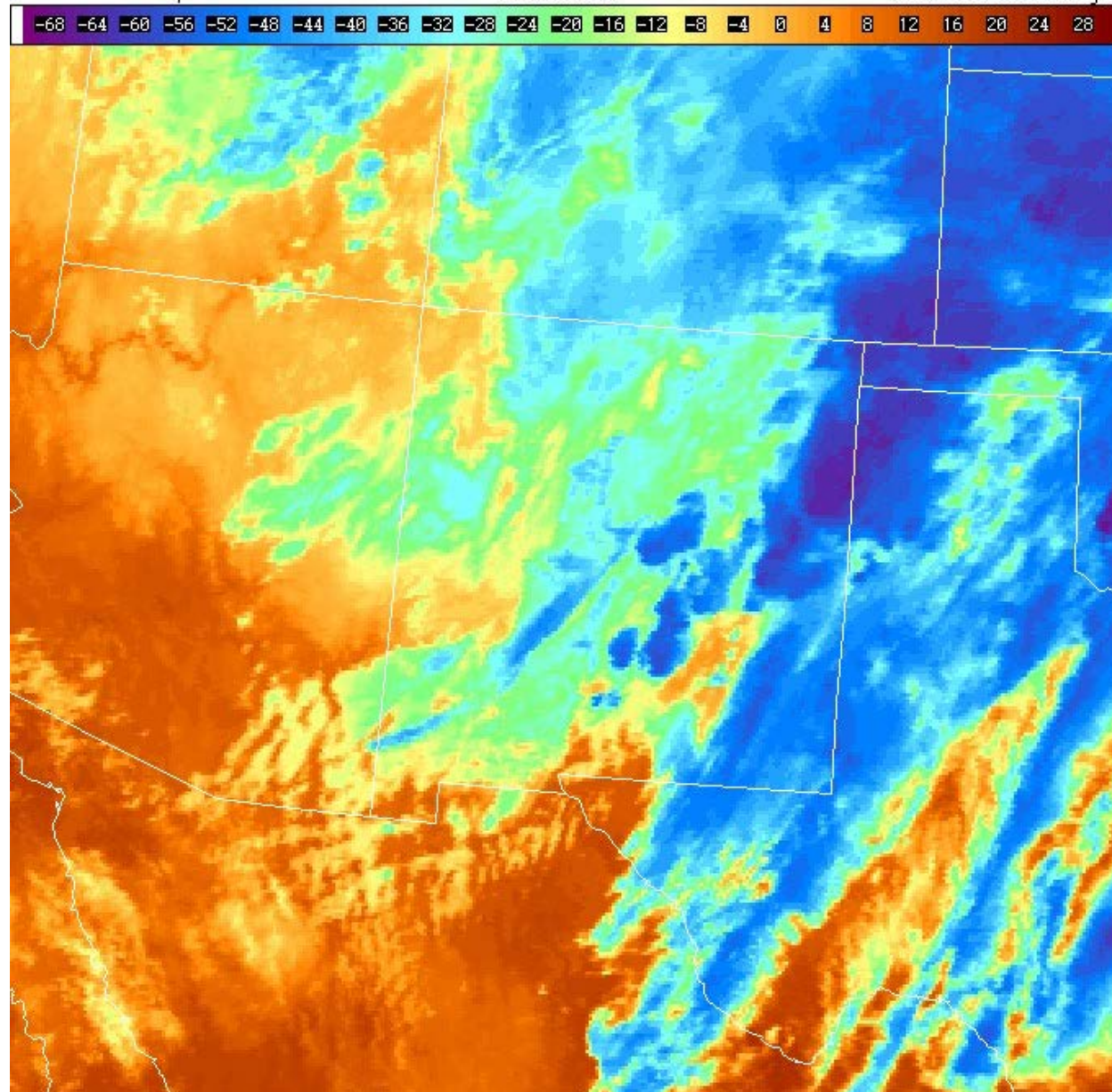


Accident Weather Package

0445 UTC Sat 29 Apr 2017

IR Satellite

www.aviationweather.gov

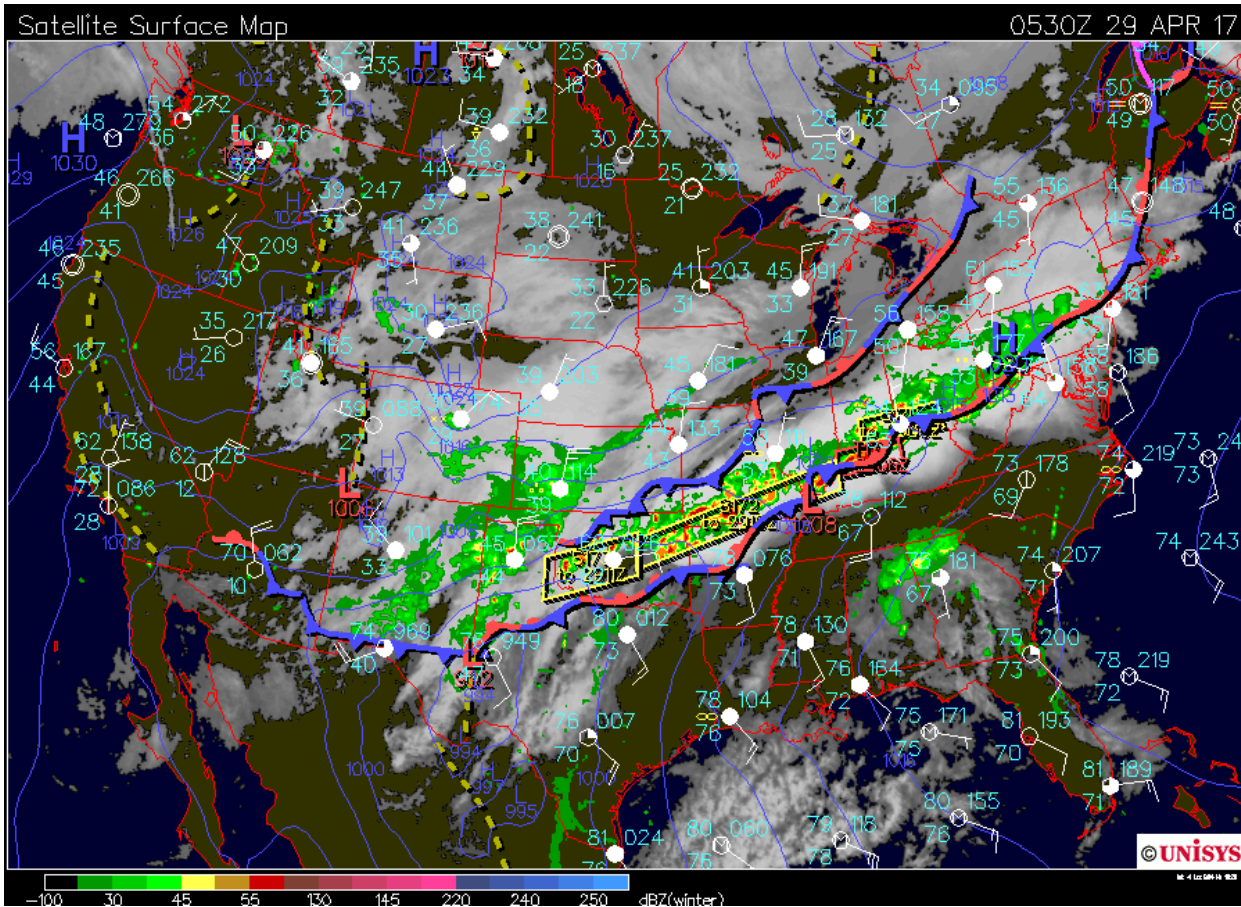




Center Weather Service Unit Albuquerque ARTCC



Accident Weather Package





Center Weather Service Unit Albuquerque ARTCC

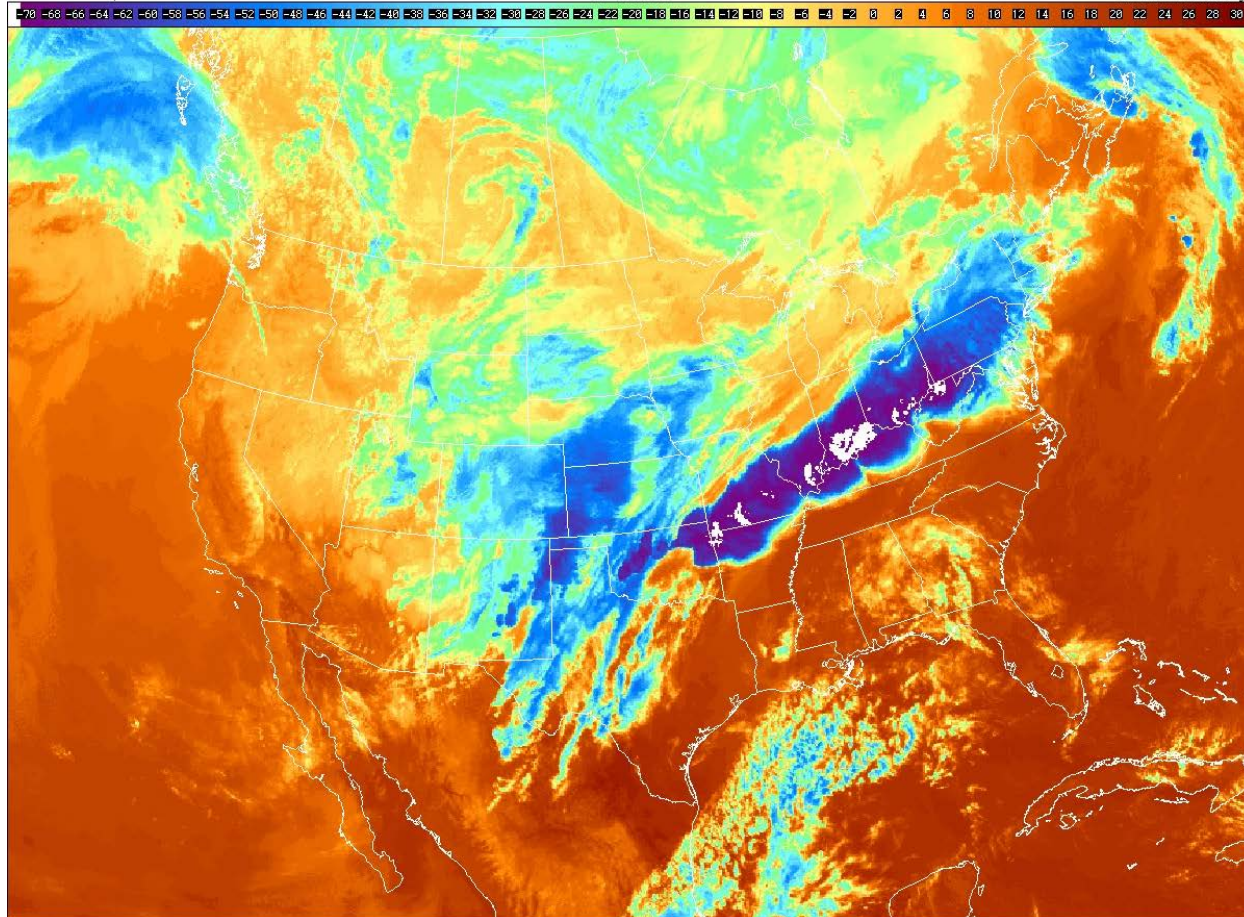


Accident Weather Package

0515 UTC Sat 29 Apr 2017

IR Satellite

www.aviationweather.gov





Center Weather Service Unit Albuquerque ARTCC



Accident Weather Package

0515 UTC Sat 29 Apr 2017

IR Satellite

www.aviationweather.gov

