

**ATTACHMENT #7**  
**SMS Scores for Unsafe Driving BASIC**

**(3 Pages)**



## Federal Motor Carrier Safety Administration A&I Online: Safety Measurement System

### H & O TRANSPORT INC

DOT#:192981

SMS Measurement

The SMS provides an assessment of a motor carrier's on-road performance and investigation results within the Behavior Analysis and Safety Improvement Categories (BASICS). Assessments cover 24 months of activity and results are updated monthly. For current Motor Carrier Safety Ratings visit [SAFER](#) and for current operating authority and insurance information visit [Licensing and Insurance \(L&I\)](#) system.

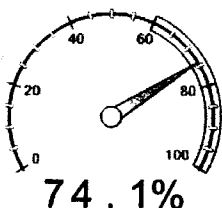
### Unsafe Driving

Operation of CMVs by drivers in a dangerous or careless manner. (FMCSR Parts 392 and 397)

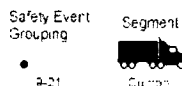
### BASIC Overall Status

Overall BASIC Status: **Good**  
(Based on a 24-month record ending May 24, 2013)

### On-road Performance Overview



MEASURE: 5.55  
PERCENTILE: 74.1%



Average Power Units: 32.0  
Vehicle Miles Traveled (VMT): 2,975,734  
VMT Year: 2011 VMT Source: Registration (MCS-150)

Average Power Units (APU) x Utilization Factor (UF): 35.1  
Total Inspections with Unsafe Driving Violations: 19  
Total Unsafe Driving Violations: 20

The Unsafe Driving measure/percentile is based on Roadside Inspection reports. Some Unsafe Driving violations are reported when a Roadside Inspection was performed following a traffic stop for the Unsafe Driving violation. These reported violations do not always result in the issuance of a citation to the driver.

### UNSAFE DRIVING

Violation	Description	# Total Violations	# OOS Violations	Violation Weight
392.2C	Failure to obey traffic control device	1	0	5
392.2FC	Following too close	2	0	5
392.2LC	Improper lane change	2	0	5
392.2PK	Unlawfully parking and/or leaving vehicle in the roadway	1	0	1
392.2S	Speeding	1	0	1
392.2-SLLS2	State/Local Laws - Speeding 6-10 miles per hour over the speed limit	7	0	4
392.2-SLLS3	State/Local Laws - Speeding 11-14 miles per hour over the speed limit	4	0	7
392.2-SLLSWZ	State/Local Laws - Speeding work/construction zone	1	0	10
392.82A1	Using a hand-held mobile telephone while operating a CMV	1	0	10

### INSPECTIONS WITH VIOLATIONS HISTORY


Report				Driver			Vehicle			Measure		
	Inspection Date	#	ST	Last	First	Lic #	Plate #	Lic ST	Type	Severity Weight (A)	Time Weight (B)	Time Severity Weight (AxB)
1	4/20/2013	LALADR003325	LA				115258	IN	Truck Tractor	1	3	3
Violation: 392.2PK Unlawfully parking and/or leaving vehicle in the roadway (Non-OOS)										1		
2	4/13/2013	IN6315000408	IN				115275	IN	Truck Tractor	4	3	12
Violation: 392.2-SLLS2 State/Local Laws - Speeding 6-10 miles per hour over the speed limit (Non-OOS)										4		
3	4/12/2013	KY0HHF001138	KY				260539	IN	Truck Tractor	4	3	12
Violation: 392.2-SLLS2 State/Local Laws - Speeding 6-10 miles per hour over the speed limit (Non-OOS)										4		
4	4/10/2013	AZ0233001431	AZ				2126005	IN	Truck Tractor	10	3	30
Violation: 392.82A1 Using a hand-held mobile telephone while operating a CMV (Non-OOS)										10		
5	3/31/2013	ALDECVO02409	AL				115271	IN	Truck Tractor	4	3	12

Report			Driver			Vehicle			Measure		
Inspection Date	#	ST	Last	First	Lic #	Plate #	Lic ST	Type	Severity Weight (A)	Time Weight (B)	Time Severity Weight (AxB)
Violation: 392.2-SLLS2 State/Local Laws - Speeding 6-10 miles per hour over the speed limit (Non-OOS)									4		
6/2/16/2013	AZ0127005060	AZ				181757	IN	Truck Tractor	5	3	15
Violation: 392.2LC Improper lane change (Non-OOS)									5		
7/1/15/2013	TNTCAN000168	TN				173421	IN	Truck Tractor	5	3	15
Violation: 392.2C Failure to obey traffic control device (Non-OOS)									5		
8/1/10/2013	GA1120002878	GA				115275	IN	Truck Tractor	7	3	21
Violation: 392.2-SLLS3 State/Local Laws - Speeding 11-14 miles per hour over the speed limit (Non-OOS)									7		
9/11/21/2012	CA634N000538	CA				1209590	IN	Truck Tractor	4	2	8
Violation: 392.2-SLLS2 State/Local Laws - Speeding 6-10 miles per hour over the speed limit (Non-OOS)									4		
10/9/26/2012	KY0H0F001002	KY				2055435	IN	Truck Tractor	4	2	8
Violation: 392.2-SLLS2 State/Local Laws - Speeding 6-10 miles per hour over the speed limit (Non-OOS)									4		
11/8/10/2012	KY0H0F000954	KY				260539	IN	Truck Tractor	4	2	8
Violation: 392.2-SLLS2 State/Local Laws - Speeding 6-10 miles per hour over the speed limit (Non-OOS)									4		
12/3/31/2012	TNTBW000122	TN				115275	IN	Truck Tractor	4	1	4
Violation: 392.2-SLLS2 State/Local Laws - Speeding 6-10 miles per hour over the speed limit (Non-OOS)									4		
13/3/30/2012	KY0CCR002347	KY				347713	IN	Truck Tractor	7	1	7
Violation: 392.2-SLLS3 State/Local Laws - Speeding 11-14 miles per hour over the speed limit (Non-OOS)									7		
14/1/10/2012	TNTBTQ000414	TN				181757	IN	Truck Tractor	12	1	12
Violation: 392.2FC Following too close (Non-OOS)									5		
Violation: 392.2-SLLS3 State/Local Laws - Speeding 11-14 miles per hour over the speed limit (Non-OOS)									7		
15/12/11/2011	AZ0000720296	AZ				115258	IN	Truck Tractor	10	1	10
Violation: 392.2-SLLSWZ State/Local Laws - Speeding work/construction zone (Non-OOS)									10		
16/11/29/2011	AZ0000610818	AZ				181757	IN	Truck Tractor	5	1	5
Violation: 392.2LC Improper lane change (Non-OOS)									5		
17/9/19/2011	GA1120001670	GA				115271	IN	Truck Tractor	7	1	7
Violation: 392.2-SLLS3 State/Local Laws - Speeding 11-14 miles per hour over the speed limit (Non-OOS)									7		
18/9/13/2011	GA0137004449	GA				115276	IN	Truck Tractor	5	1	5
Violation: 392.2FC Following too close (Non-OOS)									5		
19/6/14/2011	CA3066002127	CA				181757	IN	Truck Tractor	1	1	1
Violation: 392.2S Speeding (Non-OOS)									1		

## Investigation Results Overview



No serious violation(s) discovered

Certain violations found during an investigation can result in a  for a BASIC. The status remains for 12 months following the investigation.

## SERIOUS VIOLATIONS FROM INVESTIGATIONS

There are no Serious Violations to display

Use this page to view graphs of various aspects of your safety performance.