

LOC I-LQY 111.7	APP CRS 223°	Rwy Idg 8001
		TDZE 598
		Apt Elev 598

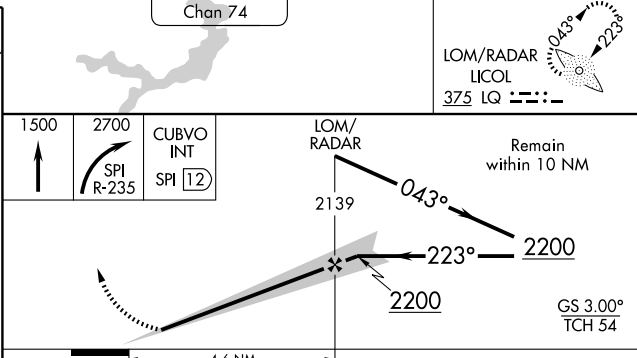
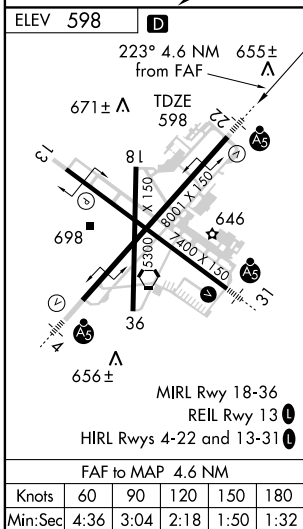
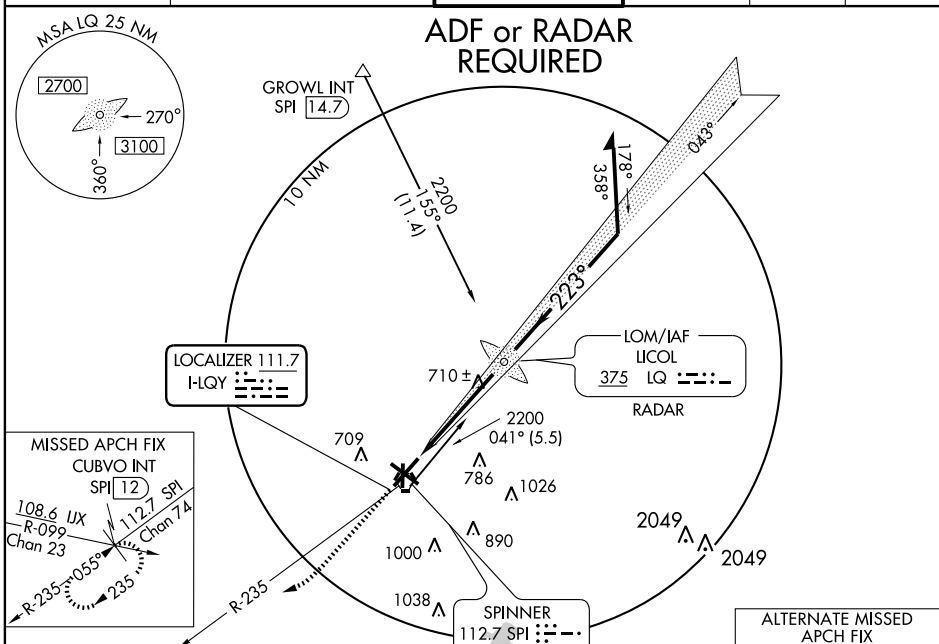
ILS or LOC RWY 22

SPRINGFIELD/ABRAHAM LINCOLN CAPITAL (SPI)

ADF or RADAR Required. When local altimeter setting not received, use Lincoln altimeter setting and increase all DA 57 feet and all MDA 60 feet, and increase S-LOC 22 Cat C visibility ¼ mile.

MALSR MISSED APPROACH: Climb to 1500 then climbing right turn to 2700 via SPI VORTAC R-235 to CUBVO Int/SPI 12 DME and hold.

ATIS 127.65 270.1	SPRINGFIELD APP CON ★ 118.6 323.0	SPRINGFIELD TOWER ★ 121.3(CTAF) 257.8	GND CON 121.9 348.6	CLNC DEL 121.7	UNICOM 122.95
-----------------------------	---	---	-------------------------------	--------------------------	-------------------------



CATEGORY	A	B	C	D
S-ILS 22	798-½ 200 (200-½)			
S-LOC 22	960-½ 362 (400-½)			960-¾ 362 (400-¾)
CIRCLING	1020-1 422 (500-1)	1060-1 462 (500-1)	1060-1½ 462 (500-1½)	1200-2 602 (700-2)

EC-3, 16 DEC 2010 to 13 JAN 2011

EC-3, 16 DEC 2010 to 13 JAN 2011

10266
AIRPORT DIAGRAM

SPRINGFIELD/ABRAHAM LINCOLN CAPITAL (SPI)
 AL-518 (FAA)
 SPRINGFIELD, ILLINOIS

ATIS
 127.65 270.1
 SPRINGFIELD TOWER ★
 121.3 257.8
 GND CON
 121.9 348.6
 CLNC DEL
 121.7



RWY 04-22
 S-100, D-200, 2S-175, 2D-350
 RWY 13-31
 S-70, D-90, 2S-114, 2D-160
 RWY 18-36
 S-60, D-70, 2S-89, 2D-130

JANUARY 2010
 ANNUAL RATE OF CHANGE
 0.1° W

ILLINOIS DEPT OF
 TRANSPORTATION

GOLF RAMP

FIELD
 ELEV
 598

600 X 150

Non-Movement
 Area
 ELEV 590

FSDO

FOXTROT RAMP

BAK-12/14

ELEV 588

BAK-12B

128.0°

TWR 698

HS 1

LAHSO

LAHSO

LAHSO

LAHSO

1000 x 150

BAK-12/14

ELEV 588

043.0°

ELEV 587

36

002.7°

5300 X 150

AIR D
 CARRIER
 RAMP

LAHSO

LAHSO

LAHSO

LAHSO

LAHSO

Non-Movement
 Area

CHARLIE RAMP

FBO

FENCE

B2

B3

B4

HANGARS

TERMINAL

FBO

MIL ANG
 RAMP

MIL ANG
 RAMP

MIL ANG
 RAMP

FIRE STATION

ILLINOIS ANG

GENERAL AVIATION
 BRAVO RAMP

31

308.0°

ELEV 583

Non-Movement
 Area

Non-Movement
 Area

Non-Movement
 Area

Non-Movement
 Area

Non-Movement
 Area

Non-Movement
 Area

Non-Movement
 Area

Non-Movement
 Area

Non-Movement
 Area

Non-Movement
 Area

Non-Movement
 Area

Non-Movement
 Area

Non-Movement
 Area

Non-Movement
 Area

CAUTION: BE ALERT TO RUNWAY CROSSING CLEARANCES.
 READBACK OF ALL RUNWAY HOLDING INSTRUCTIONS IS REQUIRED.

89° 41' W

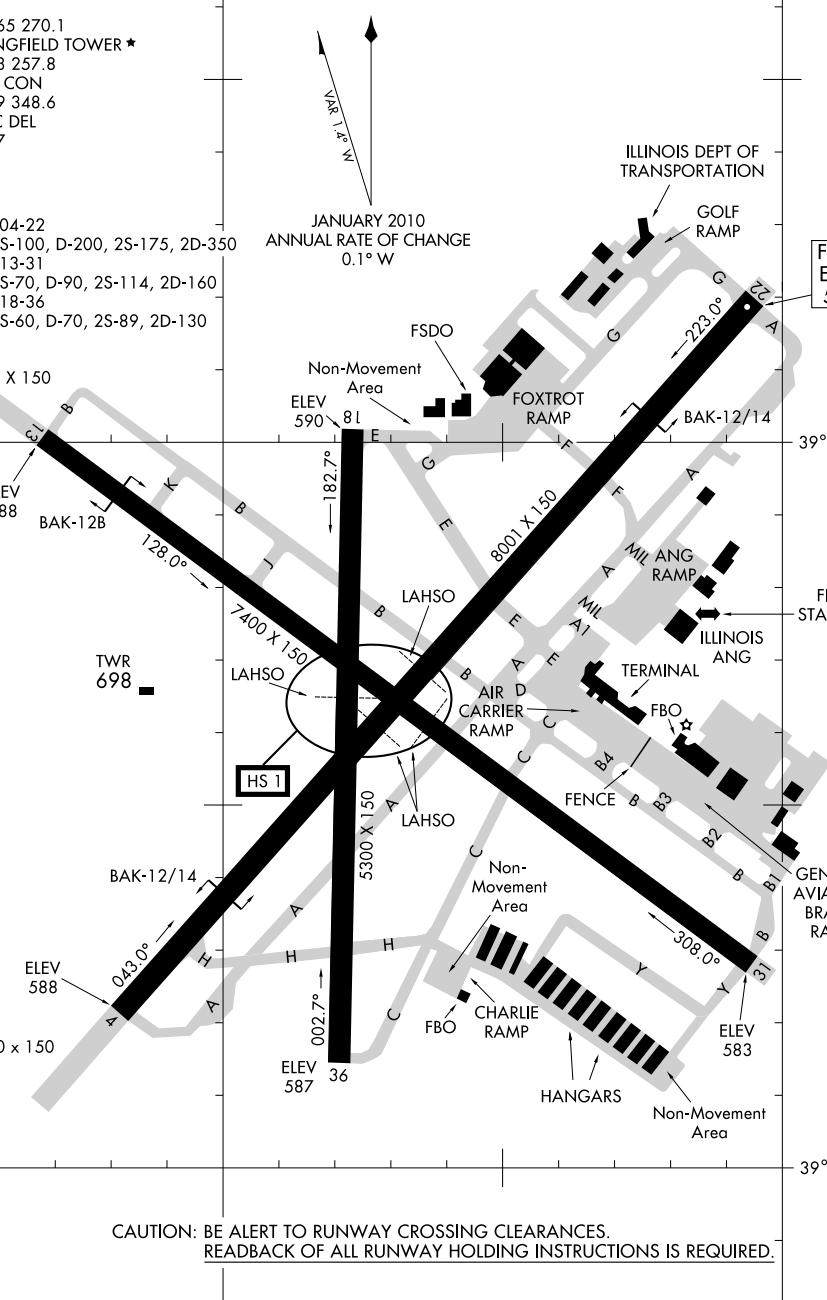
89° 40' W

AIRPORT DIAGRAM
 10266

SPRINGFIELD, ILLINOIS
 SPRINGFIELD/ABRAHAM LINCOLN CAPITAL (SPI)

EC-3, 16 DEC 2010 to 13 JAN 2011

EC-3, 16 DEC 2010 to 13 JAN 2011



SPRINGFIELD**ABRAHAM LINCOLN CAPITAL** (SPI) 3 NW UTC-6(-5DT) N39°50.65' W89°40.69'**ST LOUIS**

598 B S4 FUEL 100LL, JET A OX 1, 2 ARFF Index—See Remarks NOTAM FILE SPI

H-5D, L-27C

RWY 04-22: H8001X150 (CONC-GRVD) S-100, D-200, 2S-175, 2D-350 HIRL IAP, AD

RWY 04: MALSR. VASI(V4L)—GA 3.0° TCH 56'. Tree.

RWY 22: MALSR. VASI(V4L)—GA 3.0° TCH 54'. Tree.

RWY 13-31: H7400X150 (ASPH-GRVD) S-70, D-90, 2S-114, 2D-160 HIRL

RWY 13: REIL. PAPI(P4R) GA 3.0° TCH 50'. Trees.

RWY 31: MALSR. VASI(V4L)—GA 3.0° TCH 54'. Tree.

RWY 18-36: H5300X150 (ASPH-CONC) S-60, D-70, 2S-89, 2D-130 MIRL

RWY 18: Tree. RWY 36: Tree.

LAND AND HOLD SHORT OPERATIONS

LANDING	HOLD SHORT POINT	DIST AVBL
RWY 04	13-31	3200
RWY 22	13-31	4150
RWY 31	04-22	3350
RWY 36	13-31	3000

RUNWAY DECLARED DISTANCE INFORMATION

RWY 04:	TORA-8001	TODA-8001	ASDA-8001	LDA-8001
RWY 13:	TORA-7400	TODA-7400	ASDA-7217	LDA-7217
RWY 18:	TORA-5300	TODA-5300	ASDA-5300	LDA-5300
RWY 22:	TORA-8001	TODA-8001	ASDA-8001	LDA-8001
RWY 31:	TORA-7400	TODA-7400	ASDA-7000	LDA-7000
RWY 36:	TORA-5300	TODA-5300	ASDA-5300	LDA-5300

ARRESTING GEAR/SYSTEM

RWY 04: BAK-14 BAK-12(B) (1329')

BAK-14 BAK-12 (1329') RWY 22

RWY 13 BAK-12(B) (800')

AIRPORT REMARKS: Attended continuously. Rwy 18-36 CLOSED 0400-1200Z†. Crane 788' (199' AGL) 2.24 NM SSE. Be alert; a 10' lgtd barricade separates the air carrier and the south general aviation ramp. General aviation access to and parking on the air carrier ramp is prohibited. Acft on the golf ramp not visible from twr, entrance to Twy Y between hangars C and D not visible from twr, Twy Y marked with non standard signage. Acft taxiing to Rwy 04 via Twy C must taxi via Twy C, Twy H and Twy A for a full length Rwy 04 departure. Intersection departure Rwy 04 at Twy H has 7200' remaining. Acft in berm area adjacent Twy E and Twy G not visible from twr, acft in berm area taxi at own risk. Twy Y not available for air carrier ops with more than 30 passenger seats. During snow removal ops equipment operators will monitor CTAF when the twr is clsd. When twr clsd ACTIVATE HIRL RWY 13-31, HIRL RWY 04-22, MALSR RWY 04, RWY 22 and RWY 31, VASI RWY 31 and REIL RWY 13—CTAF. PAPI RWY 13 and VASI RWY 04, RWY 22 opr continuously. MIRL RWY 18-36 ints preset on/off per wind conditions when twr clsd. Class I ARFF Index A. AARF Index C equipment avbl upon req; call 217-788-1080. Rwy 18-36 400' concrete N end. NOTE: See Special Notices—Aerobatic Practice Areas in Illinois.

WEATHER DATA SOURCES: ASOS (217) 789-7389. LLWAS.**COMMUNICATIONS:** CTAF 121.3 ATIS 127.65 UNICOM 122.95

SPINNER RCO 122.25 (ST LOUIS RADIO)

① **SPRINGFIELD APP/DEP CON** 118.6 (1200-0400Z†)**KANSAS CITY CENTER APP/DEP CON** 127.275 (0400-1200Z†)**SPRINGFIELD TOWER** 121.3 (1200-0400Z†) 118.6 (0400-1200Z†) **GND CON** 121.9 **CLNC DEL** 121.7**AIRSPACE:** CLASS C svc 1200-0400Z† ctc **APP CON** other times CLASS E.**RADIO AIDS TO NAVIGATION:** NOTAM FILE SPI.**SPINNER (H) VORTACW** 112.7 SPI Chan 74 N39°50.38' W89°40.66' at fld. 586/1W.**HUSKK NDB (MHW/LOM)** 382 SP N39°46.39' W89°45.59' 043° 5.7 NM to fld.**CALDE NDB (LOM)** 240 CJ N39°47.68' W89°35.56' 308° 4.9 NM to fld. Unmonitored.**LICOL NDB (MHW/LOM)** 375 LQ N39°54.72' W89°36.18' 221° 5.3 NM to fld.

ILS 109.5 I-SPI Rwy 04. Class IT. LOM HUSKK NDB. ILS unmonitored when twr clsd.

ILS 111.7 I-LQY Rwy 22. Class IA. LOM LICOL NDB. ILS unmonitored when twr clsd.

ILS 110.15 I-CJF Rwy 31. Class IE. LOM CALDE NDB. ILS unmonitored when twr clsd. Glide slope unmonitored.

ASR (1200-0400Z†)

