

ILS or LOC RWY 16

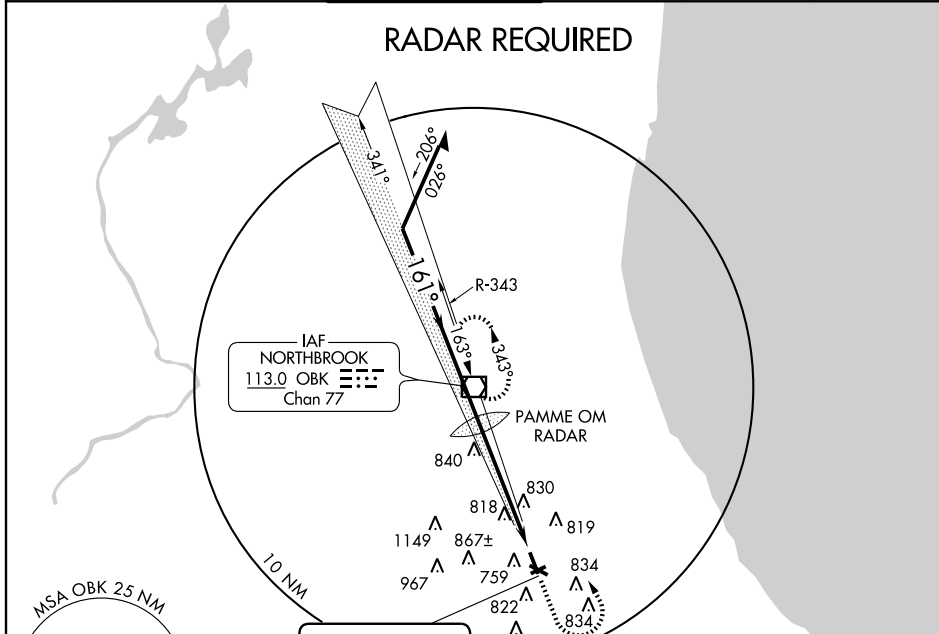
CHICAGO EXECUTIVE (PWK)

LOC I-PWK 111.9	APP CRS 161°	Rwy Idg 5000
		TDZE 643
		Apt Elev 647

⚠ If local altimeter setting not received, use Chicago-O'Hare Intl altimeter setting and increase all DAs 22 feet, and all visibilities 1/4 mile; increase all MDAs 40 feet, and S-LOC Cat C and D visibilities 1/4 mile. Visibility reduction by helicopters NA.

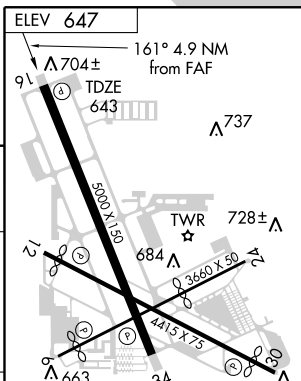
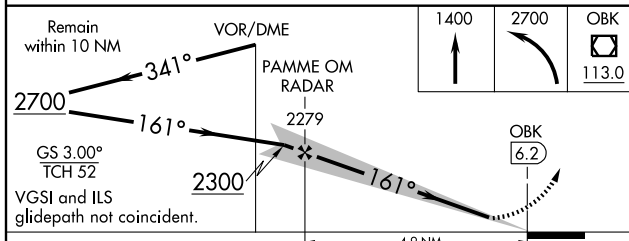
MISSED APPROACH: Climb to 1400 then climbing left turn to 2700 direct OBK VOR/DME and hold.

ATIS 124.2	CHICAGO APP CON 120.55 290.2	EXECUTIVE TOWER * 119.9 (CTAF) 0	GND CON 121.7	CLNC DEL 124.7	UNICOM 122.95
----------------------	--	--	-------------------------	--------------------------	-------------------------



EC-3, 17 NOV 2011 to 15 DEC 2011

EC-3, 17 NOV 2011 to 15 DEC 2011



CATEGORY	A	B	C	D
S-ILS 16	893-3/4 250 (300-3/4)			
S-LOC 16	1140-1	497 (500-1)	1140-1 1/2 497 (500-1 1/4)	1140-1 1/2 497 (500-1 1/2)
CIRCLING	1140-1	493 (500-1)	1140-1 1/2 493 (500-1 1/2)	1200-2 553 (600-2)

HIRL all Rwys 1

REIL Rws 16 and 34 1

Non-standard ALS Rwy 16 1

FAF to MAP 4.9 NM

Knots	60	90	120	150	180
Min:Sec	4:54	3:16	2:27	1:58	1:38