

AKRON, OHIO

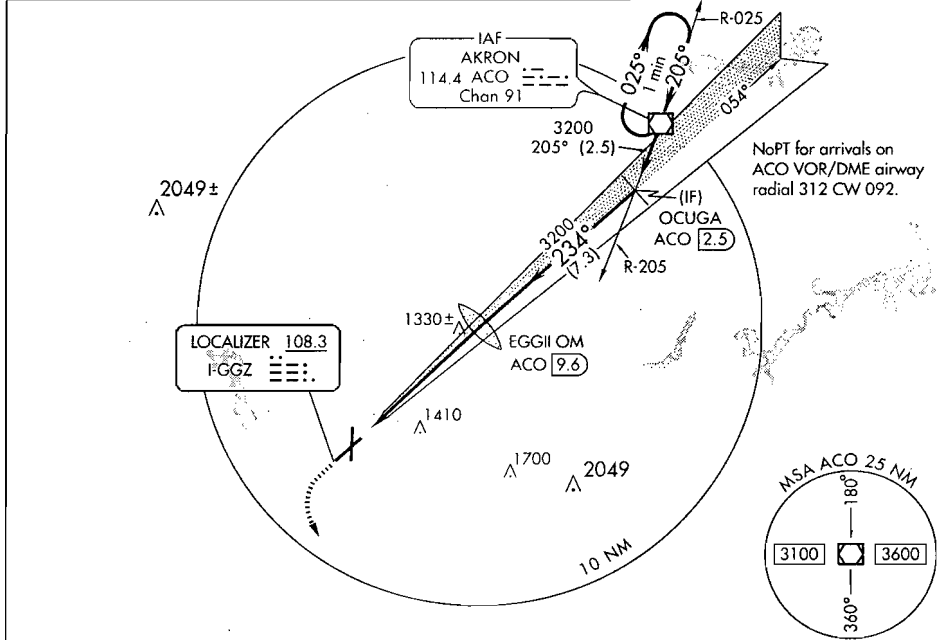
AL-638 (FAA)

LOC I-GGZ 108.3	APP CRS 234°	Rwy Idg 7597	TDZE 1228
		Apt Elev 1228	

ILS or LOC RWY 23
AKRON-CANTON RGNL (CAK)

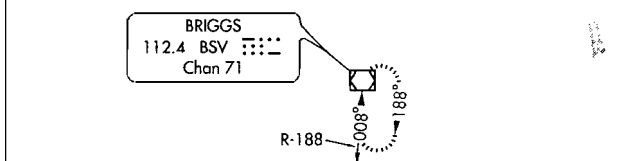
ASR	Autopilot coupled approach NA below 1574 feet.	MALSR	MISSED APPROACH: Climb to 3000 then left turn direct BSV VOR/DME and hold.
------------	--	--------------	---

ATIS 121.05	AKRON-CANTON APP CON * EAST 125.5 371.875 WEST 118.6 323.0	AKRON-CANTON TOWER 118.3 257.8	GND CON 121.7 348.6	CLNC DEL 132.05
------------------------------	---	---	--------------------------------------	----------------------------------

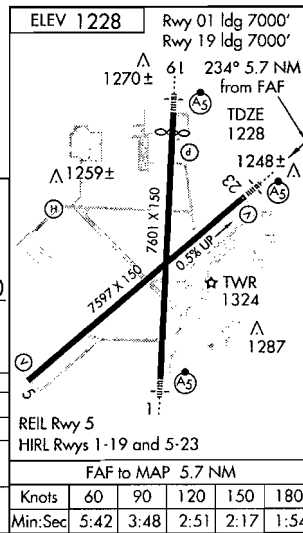


EC-2, 18 DEC 2008 to 15 JAN 2009

EC-2, 18 DEC 2008 to 15 JAN 2009



3000	BSV 112.4	EGGII OM ACO 9.6	VOR/DME	One Minute Holding Pattern
3200	3135	OCUGA ACO 2.5	234° → 205° → 025° → 3200	GS 3.00° TCH 50
	5.7 NM	7.3 NM	2.5 NM	
CATEGORY	A	B	C	D
S-ILS 23	1428/24 200 (200-½)			
S-LOC 23	1580/24 352 (400-½)		1580/40 352 (400-¾)	
CIRCLING	1760-1 532 (600-1)		1780-2 552 (600-2)	



AKRON, OHIO
Amdt 10B 08129

40°55'N · 81°27'W

AKRON-CANTON RGNL (CAK)
ILS or LOC RWY 23

FAF to MAP 5.7 NM					
Knots	60	90	120	150	180
Min:Sec	5:42	3:48	2:51	2:17	1:54